

RL9000TWM-HT

Tank, Hopper and Vessel Weighing Module

Standard Features

- Capacities: 1,000 lb-50,000 lb
- Very low profile design
- 3 mV/V output
- Self-centering
- Self-checking assembly
- Offers 100% side load, 100% uplift and 150% safe load and 300% ultimate overload protection
- Stainless steel construction
- Welded seal
- Weighs accurately with as much as a 3° on-parallel load
- Complete with 25 ft FEP cable

Optional Features

- Stainless steel top plates
- Higher capacities available upon request

Applications

- Tank, hopper, or vessel weighing
- High temperature applications

Load Cell Specifications

Full Scale Output:

3 (\pm 0.1%) mV/V

Bridge Resistance:

700 ohms

Material/Finish:

Stainless steel*

Safe Overload:

150% full scale

Rated Excitation:

5-10VDC

Operating Temperature:

0° F to 400° F

Insulation Resistance:

5,000 megohms

Seal Type:

Welded seal IP67

Cable Length:

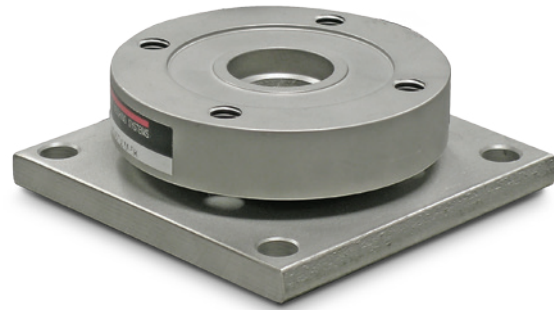
25 ft FEP jacket

Cable Color Code:

Green+ Excitation
 Black.....- Excitation
 White+ Signal
 Red- Signal

Warranty:

Two-year limited warranty



Picture is a representation of actual product

The RL9000TWM-HT is the latest addition to the popular RL9000TWM Series weigh module. The RL9000TWM-HT is a high temperature version that is designed to operate in temperatures up to 400°F.

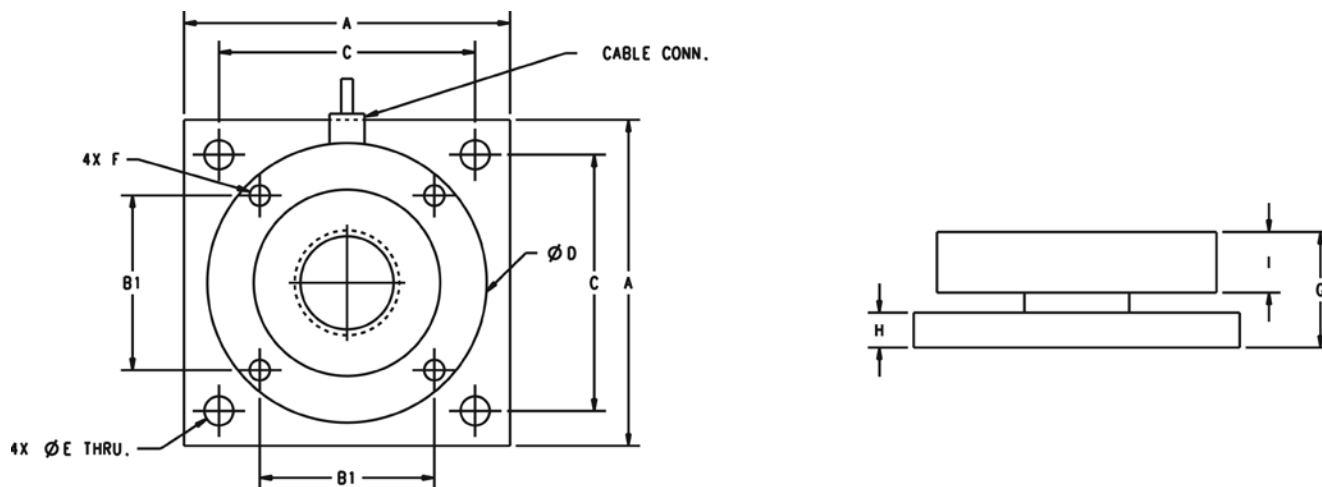
The integral 25 ft of FEP cable complements the RL9000TWM-HT weigh module.

Order Information

LOAD RATING (PER MODULE)	PART #	PRICE
Single Module		
1,000 lb	117050	Consult
2,500 lb	117051	Consult
5,000 lb	117052	Consult
10,000 lb	117140	Consult
15,000 lb	117053	Consult
20,000 lb	117054	Consult
25,000 lb	117055	Consult
35,000 lb	117056	Consult
50,000 lb	117057	Consult
Top Plates (Stainless Steel) with bolts		
1,000 lb-15,000 lb	91207	Consult
20,000 lb-50,000 lb	91210	Consult
Top Plates (Mild Steel) with bolts		
1,000 lb-15,000 lb	124758	Consult
20,000 lb-50,000 lb	125141	Consult

RL9000TWM-HT

Tank, Hopper and Vessel Weighing Module



Dimensions

RATED CAPACITY	A	B1	C	D	E	F	G	H	I	CONDUIT ADAPTER
lb/inches										
1,000 lb - 10,000 lb	4.00	2.00	3.25	3.50	0.40	3/8-16NC	1.35	0.375	0.75	—
15,000 lb	4.00	2.00	3.25	3.50	0.40	3/8-16NC	1.60	0.625	0.75	—
20,000 lb - 50,000 lb	7.00	3.75	5.50	6.00	0.63	1/2-13NC	2.48	0.750	1.30	1/2-14NPT