

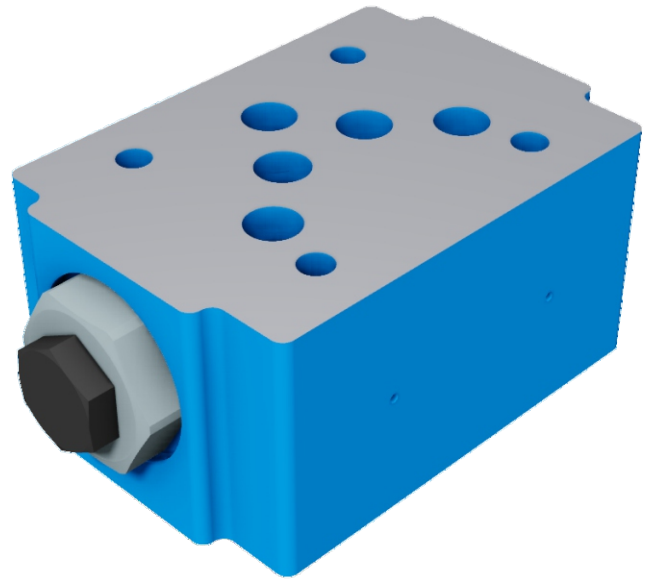


**VALVOLE DI RITEGNO**

**Z2S10**

**PILOT OPERATED CHECK VALVES**

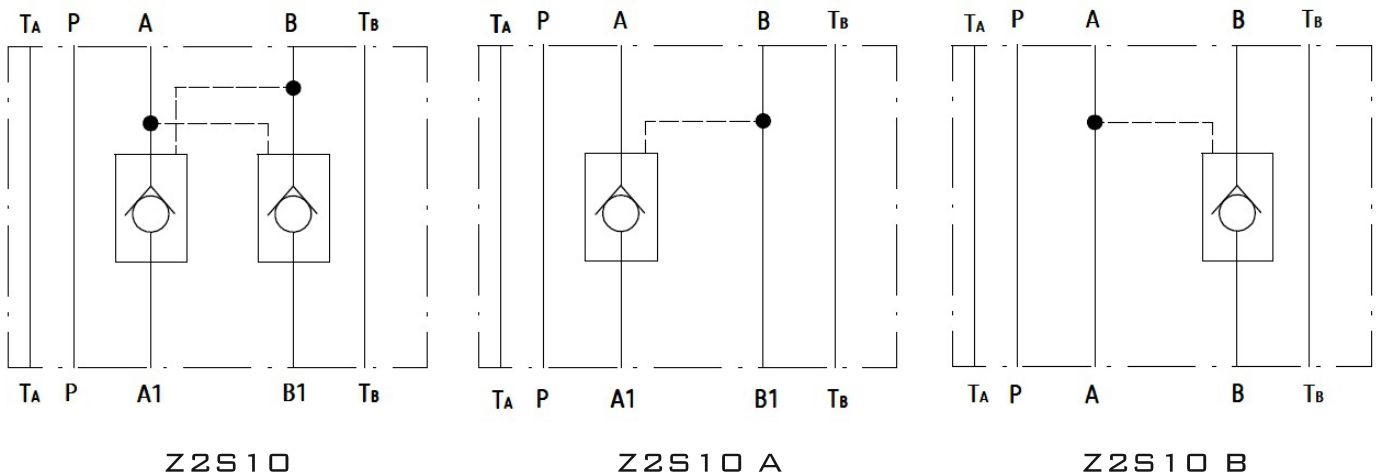
Z2S10 SERIES ARE PILOT OPERATED CHECK VALVES.  
 THIS VALVES ARE USED TO SHUT-OFF AN OIL FLOW IN ONE DIRECTION AND ALLOW FREE FLOW IN THE OPPOSITE DIRECTION.  
 THEY CAN ALSO BE OPENED IN THE DIRECTION OF CLOSURE.



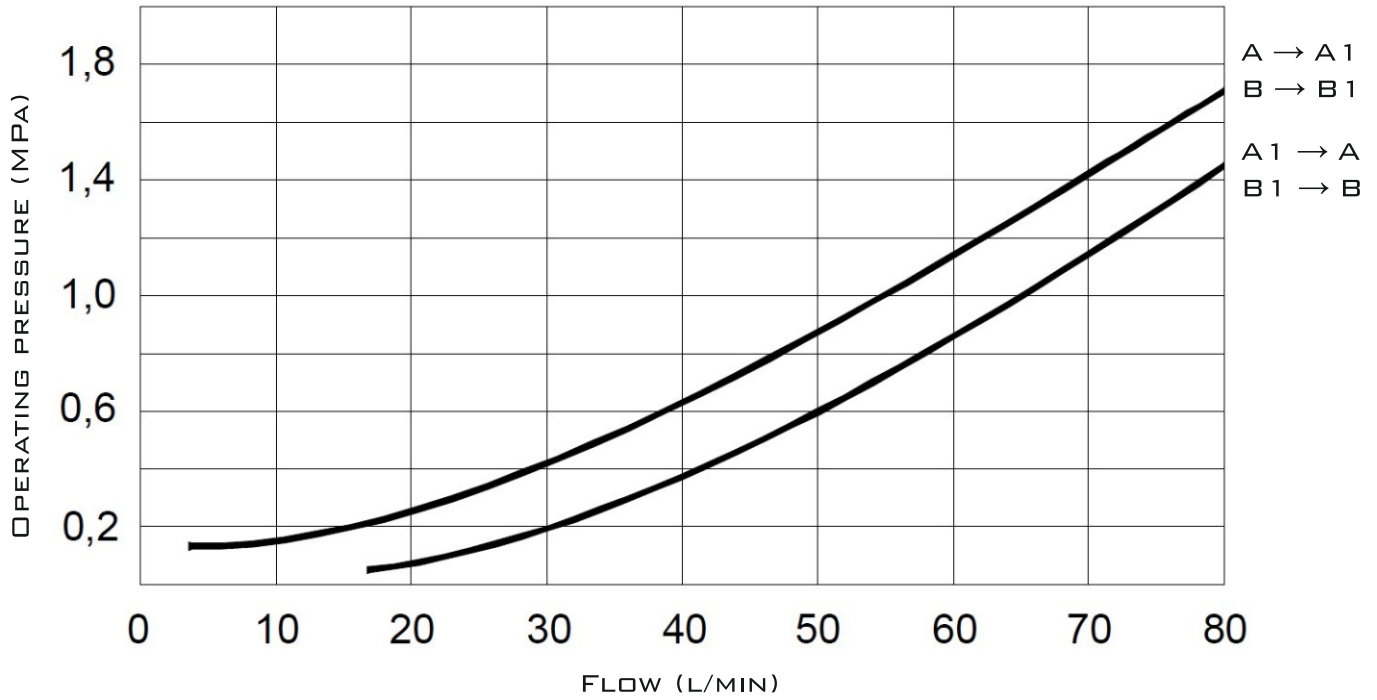
**TECHNICAL DATA**

SIZE	10
OPERATING PRESSURE (MPA)	31.5
MAX. FLOW RATE (L/MIN)	120
FLUID TEMPERATURE (°C)	-30 - 80
WEIGHT (KG)	2.2
VALVE BODY (MATERIAL)	CASTING PHOSPHATING SURFACE

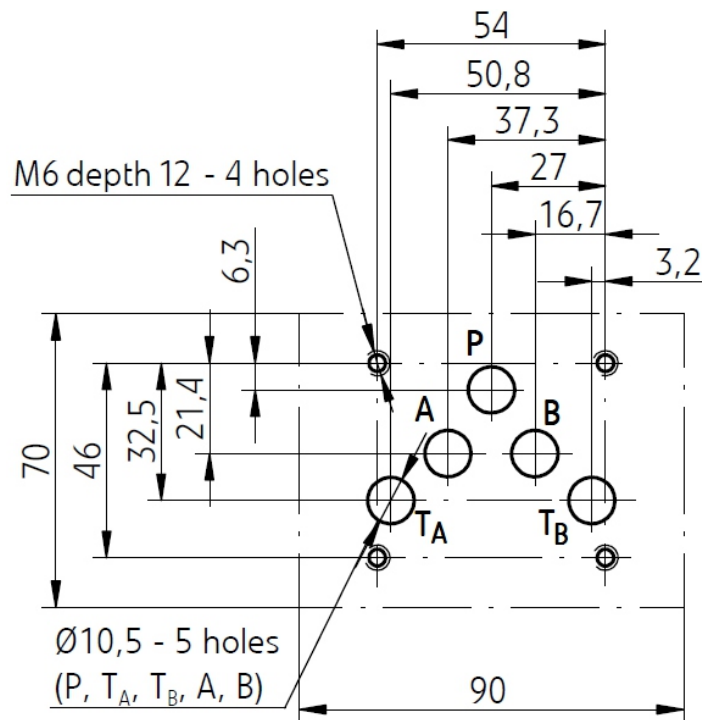
**SCHEMES**



### CHARACTERISTIC CURVES



### SUBPLATE INSTALLATION DIMENSIONS



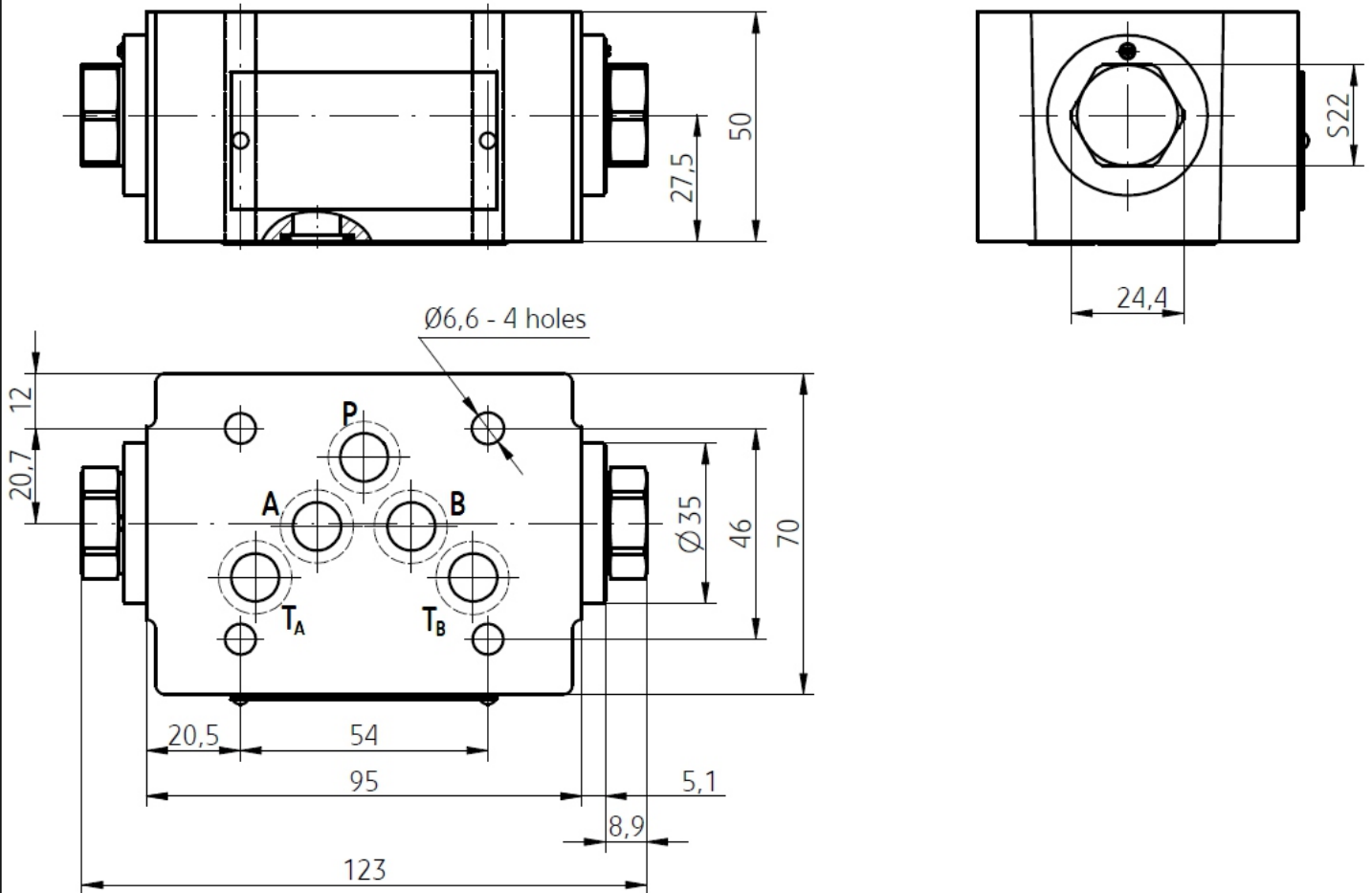


VALVOLE DI RITEGNO

Z2S10

PILOT OPERATED CHECK VALVES

**SUBPLATE INSTALLATION DIMENSIONS**



**ORDER CODE**

Z2S	10			30	
-----	----	--	--	----	--

10=10 SIZE

NO CODE=PORT A, B WITH CHECK VALVE  
 A=PORT A WITH CHECK VALVE  
 B=PORT B WITH CHECK VALVE

1=OPENING PRESSURE 0.15 MPA  
 2=OPENING PRESSURE 0.3 MPA  
 3=OPENING PRESSURE 0.6 MPA

NO CODE=MINERAL  
 SUBSTANCE HYDRAULIC OIL  
 V=PHOSPHATE EATER  
 HYDRAULIC OIL

20=20 SERIES  
 30=30 SERIES