

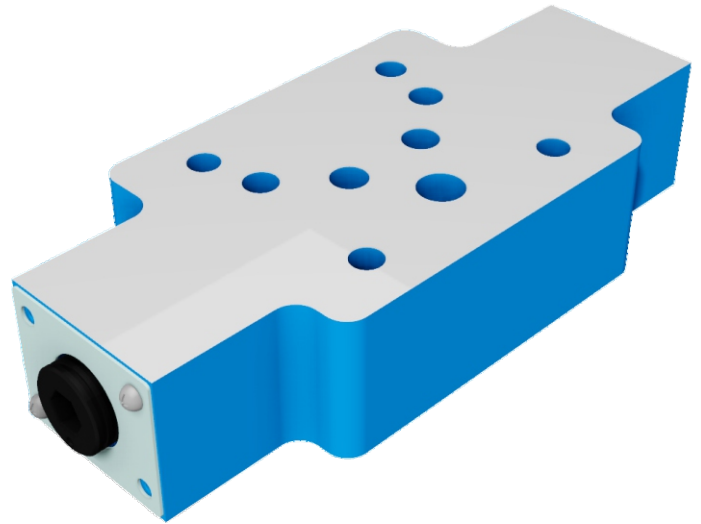


VALVOLE DI FLUSSO

Z2FS10

MODULAR THROTTLE/CHECK VALVES

Z2FS10 SERIES MODULAR THROTTLE/CHECK VALVES ARE USED TO RESTRICT FLOW IN ONE DIRECTION WHILE ALLOWING FREE-FLOW IN THE OPPOSITE DIRECTION AS CHECK VALVES.

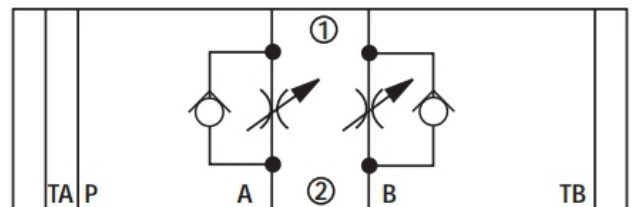
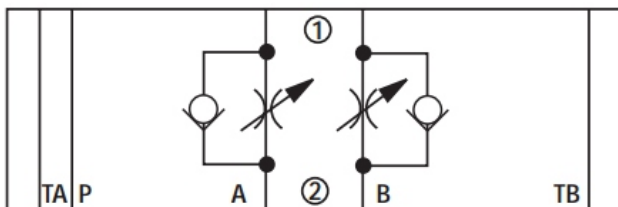


TECHNICAL DATA

SIZE	10
OPERATING PRESSURE (MPA)	31.5
MAX. FLOW RATE (L/MIN)	160
FLUID TEMPERATURE (°C)	-30 - 80
WEIGHT (KG)	2.2
VALVE BODY (MATERIAL)	CASTING PHOSPHATING SURFACE

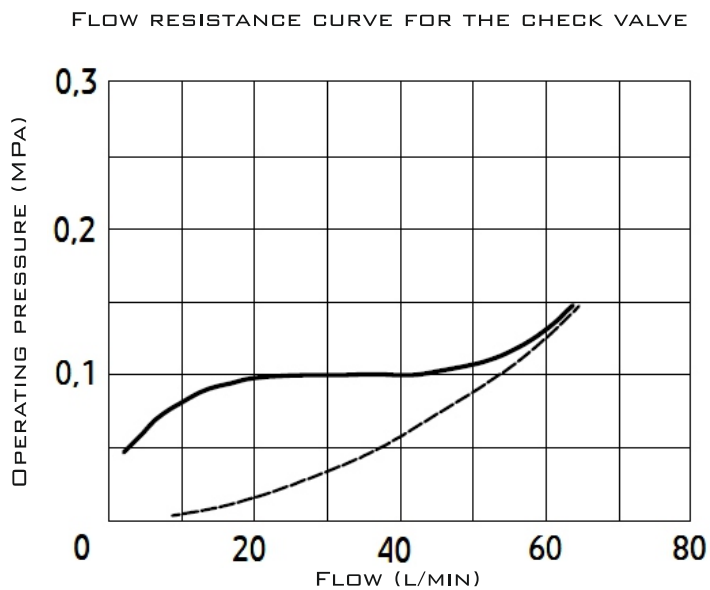
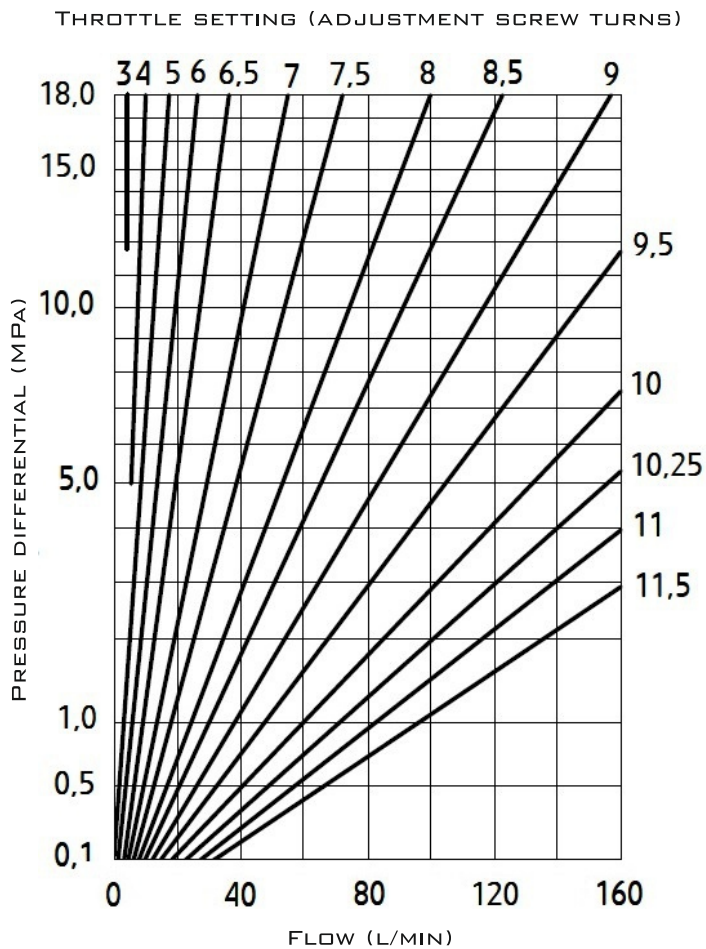
SCHEMES

1 = COMPONENT SIDE, 2 = PLATE SIDE





## CHARACTERISTIC CURVES



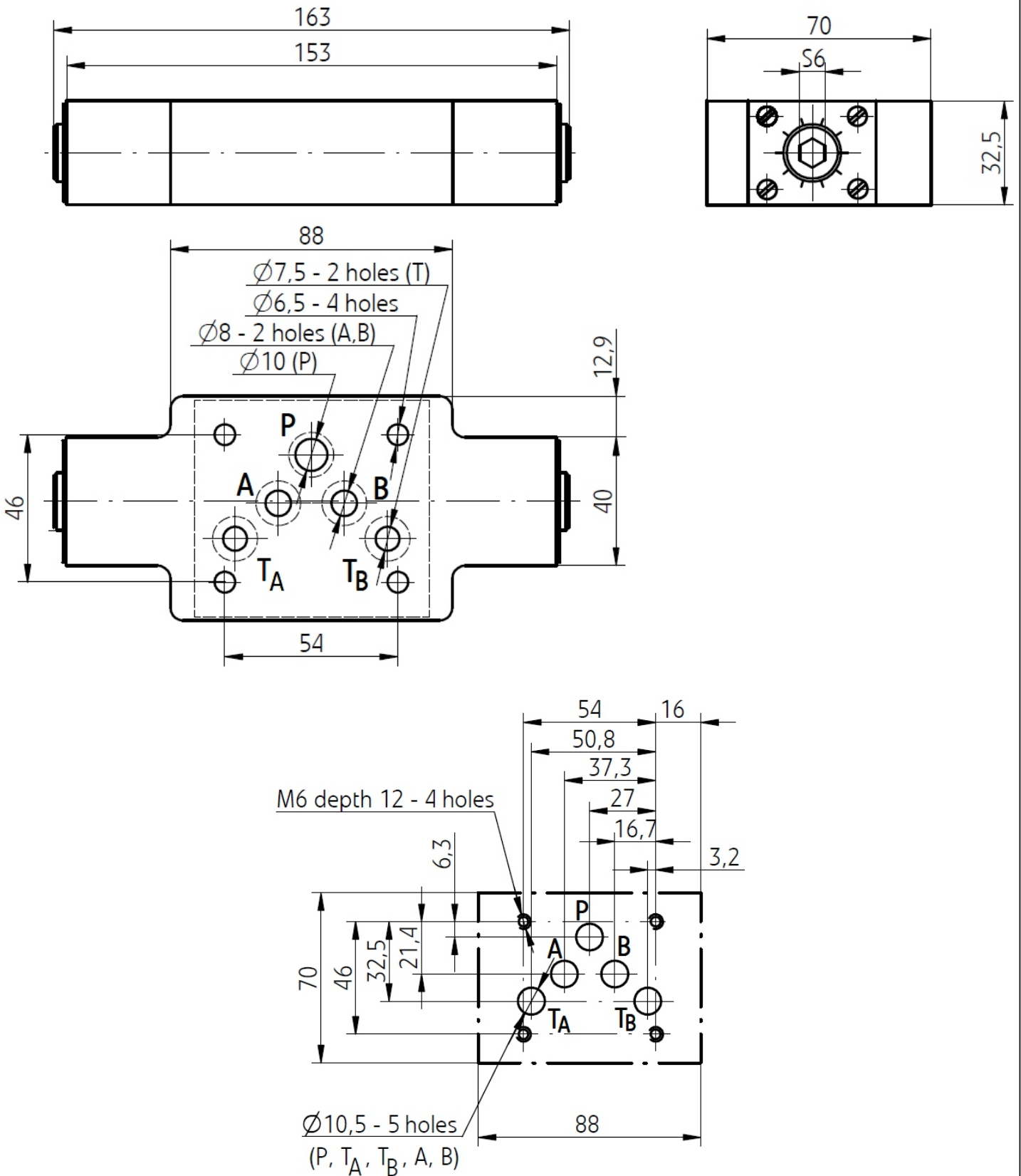


VALVOLE DI FLUSSO

Z2FS10

MODULAR THROTTLE/CHECK VALVES

SUBPLATE INSTALLATION DIMENSIONS



**Z2FS10**

VALVOLE DI FLUSSO



MODULAR THROTTLE/CHECK VALVES

**ORDER CODE**

Z2FS	10				
------	----	--	--	--	--

10=10 SIZE

NO CODE=PORT A, B WITH THROTTLE  
A=PORT A WITH THROTTLE  
B=PORT B WITH THROTTLE

2X=20-29 SERIES  
3X=30-39 SERIES

ADDITIONAL REMARKS

NO CODE=NBR SEALS  
V=FKM SEALS