



**VALVOLE DI PRESSIONE**

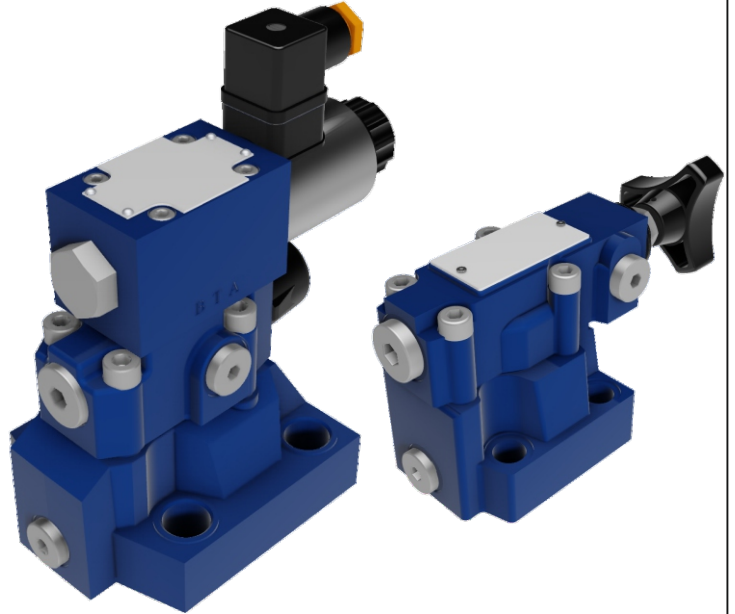
**DB**

**PILOT OPERATED PRESSURE RELIEF VALVES**

DB IS PILOT OPERATED PRESSURE RELIEF VALVE, DBW IS A PILOT OPERATED SOLENOID RELIEF VALVE AVAILABLE TO UNLOAD SYSTEM PRESSURE.

THESE VALVES ARE USED TO CONTROL THE PRESSURE OF HYDRAULIC SYSTEMS SMOOTHLY IN A WIDE RANGE.

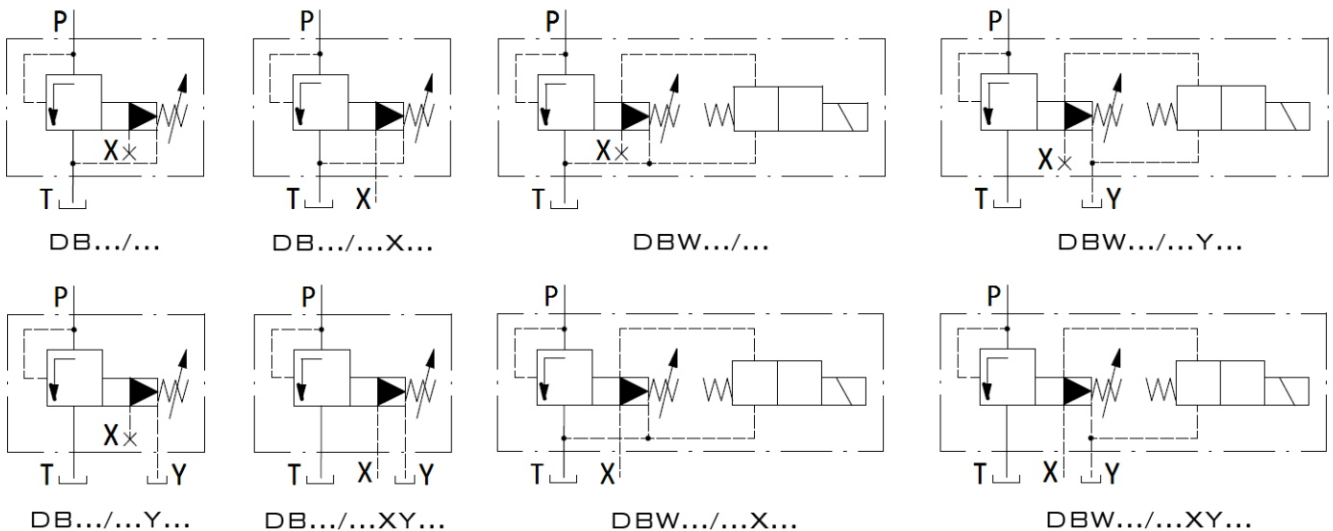
THIS TYPE IS SUITABLE FOR A HYDRAULIC SYSTEM DEMANDS HIGH FLOW RATE.



**TECHNICAL DATA**

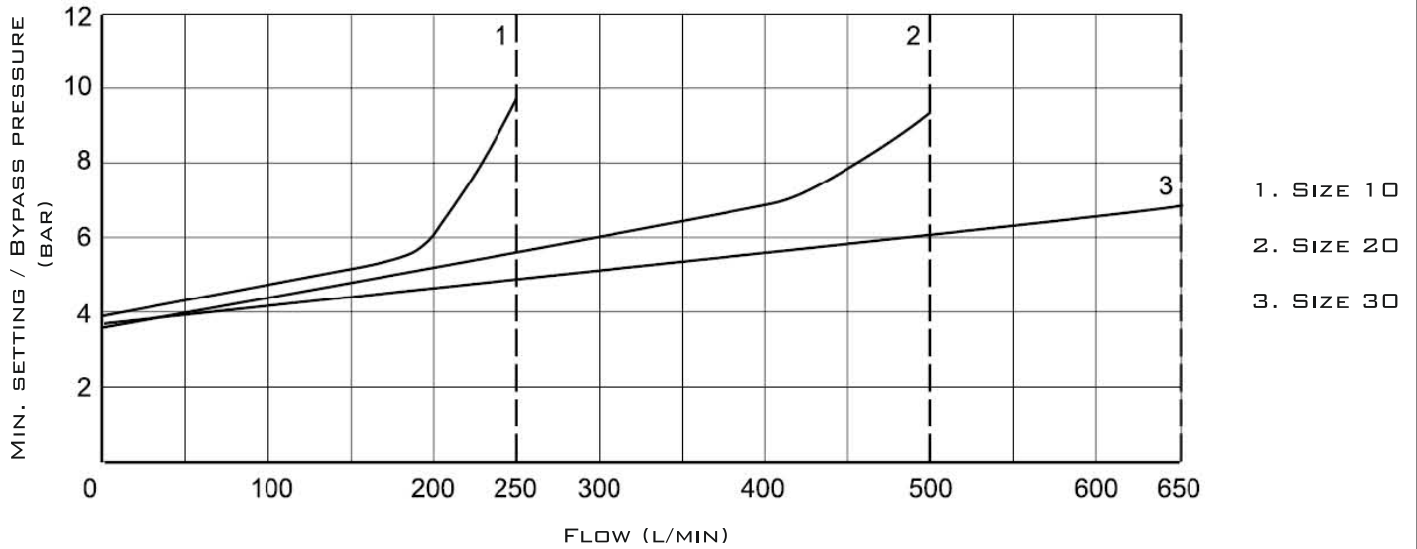
SIZE	10		20		30	
SERIES	3X	5X	3X	5X	3X	5X
OPERATING PRESSURE (MPA)	31.5	35	31.5	35	31.5	35
MAX. FLOW RATE (L/MIN)	200	250	400	500	600	650
FLUID TEMPERATURE (°C)	-20 - 70					
FILTRATION ACCURACY (µm)	25					
WEIGHT (KG)	DB	3.2	4.2	5.2	5.2	6.8
	DBW	4.7	5.5	6.8	6.8	8.5
VALVE BODY (MATERIAL)	CASTING PHOSPHATING SURFACE					

**SCHEMES**

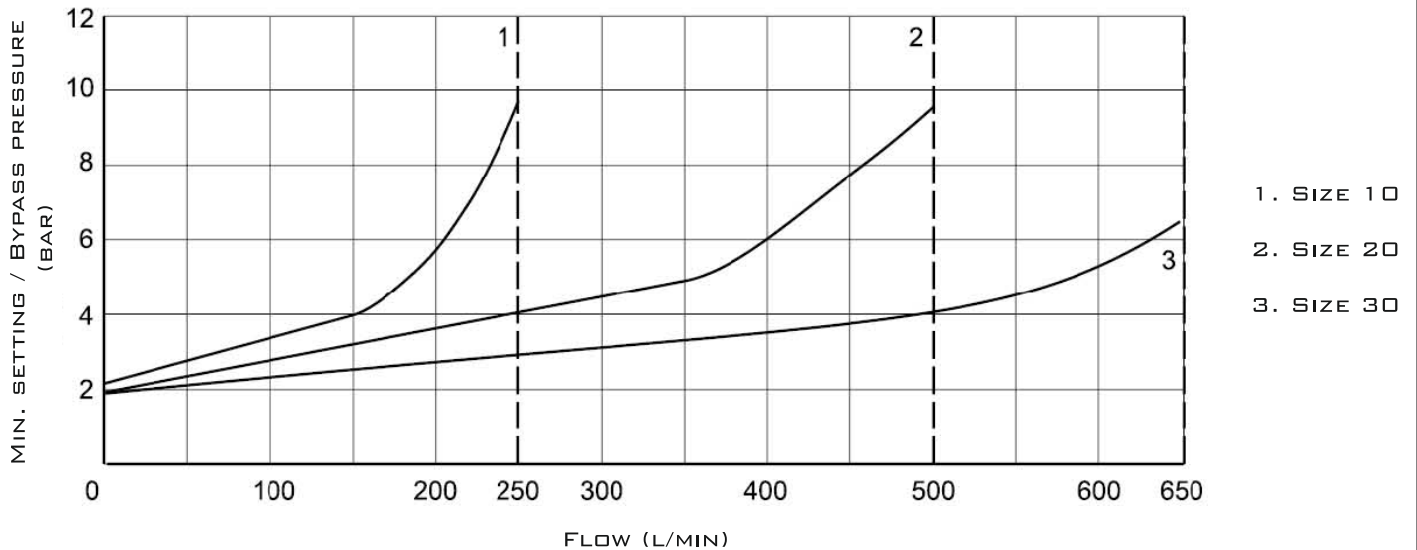


**CHARACTERISTIC CURVES**

CHARACTERISTIC OF MIN. SETTING PRESSURE BYPASS / BYPASS PRESSURE AND FLOW STANDART



CHARACTERISTIC OF MIN. SETTING PRESSURE BYPASS / BYPASS PRESSURE AND FLOW TYPE "U"



**ATTENTION!**

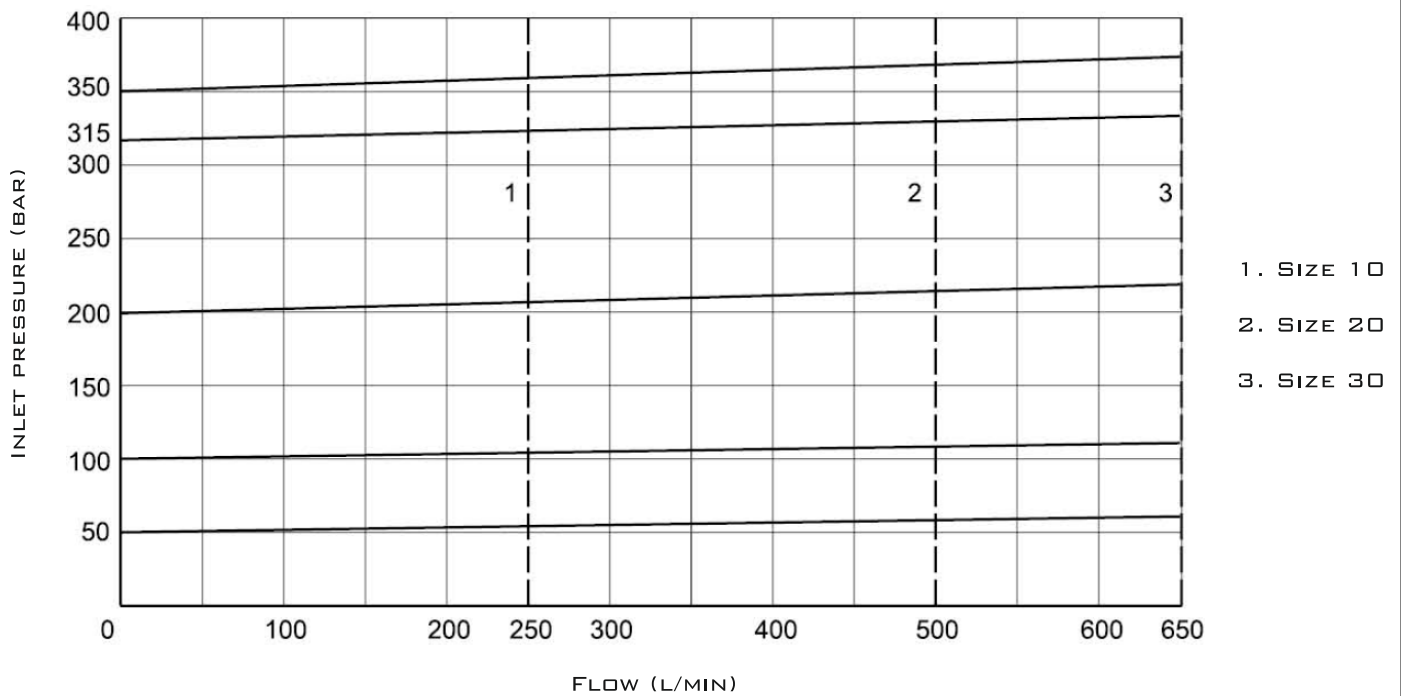
THE CURVES MEASURED WITHOUT PRESSURE WHEN CONTROL OIL BACK TO THE TANK. REFERS TO THE BACK INTO HOUSING OF THE CONTROL OIL, THE PRESSURE OF "T" PORT HAS INCREASED AGAINST THE INPUT PRESSURE. THE CURVES ARE AVAILABLE WHEN THE OUTPUT PRESSURE  $P_t=0$  WITHIN THE FLOW RANGES.

SEE ALSO:  
DBD, ZDB



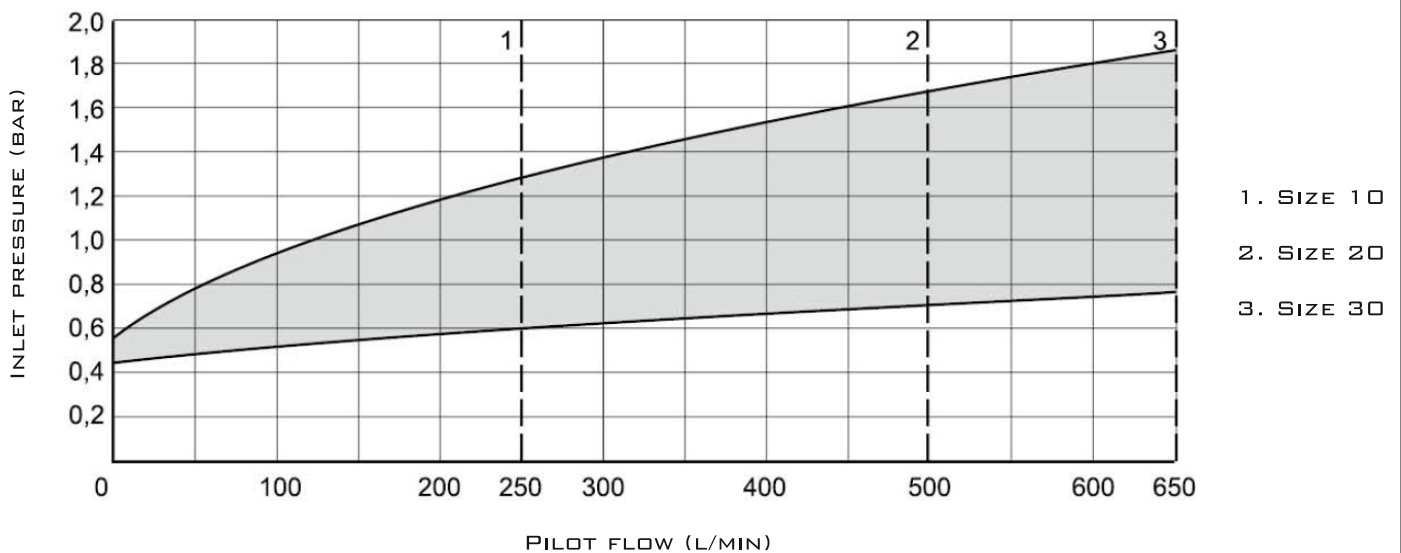
### CHARACTERISTIC CURVES

CHARACTERISTIC OF INLET PRESSURE AND FLOW



ATTENTION!  
REFERS TO THE BACK INTO HOUSING OF THE CONTROL OIL, THE PRESSURE OF "T" PORT  
HAS INCREASED AGAINST THE INPUT PRESSURE.

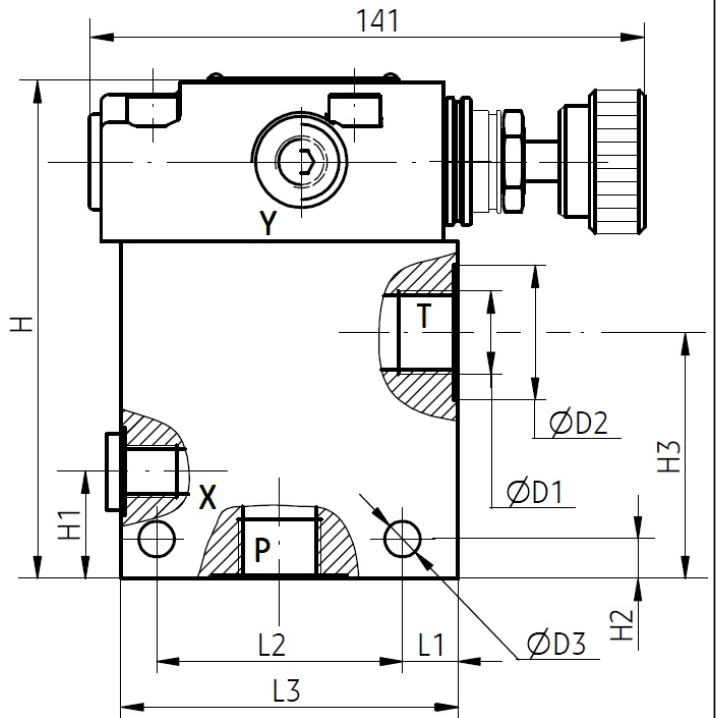
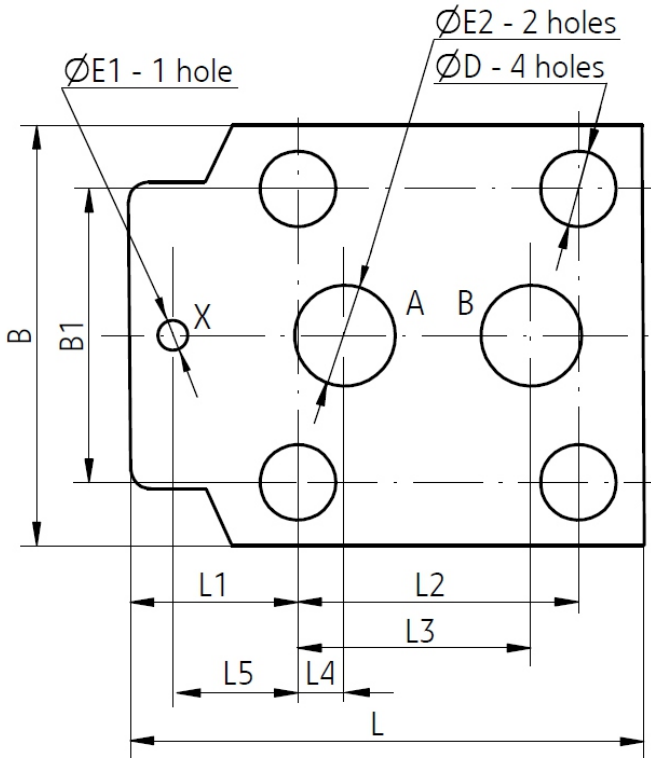
PILOT FLOW



PILOT OPERATED PRESSURE  
RELIEF VALVES

**SUBPLATE MOUNTING**

**THREAD CONNECTION**



**SUBPLATE MOUNTING**

MODEL	L	L1	L2	L3	L4	L5	B	B1	D	E1	E2
DB/DBW10	90	23.5	54	47.6	22.2	0	78	54	M12/26	$\text{Ø}6$	$\text{Ø}12$
DB/DBW20	117	34	66.7	55.6	11.1	23.8	100	69.8	M16/26	$\text{Ø}6$	$\text{Ø}25$
DB/DBW30	148	41.5	88.7	76.2	12.7	31.7	115	82.5	M18/26	$\text{Ø}7$	$\text{Ø}32$

**THREAD CONNECTION**

MODEL	D1		D2	D3	L1	L2	L3	H	H1	H2	H3
	METRIC	INCH									
DB10G	M22x1.5	G1/2"	34	9	14	62	85	125	27	10	62
DB15G	M27x2	G3/4"	42	9	14	62	85	125	27	10	62
DB20G	M33x2	G1"	47	9	14	62	85	125	27	10	57
DB25G	M42x2	G1 1/4"	56	9	18	72	100	138	40	13	66
DB30G	M48x2	G1 1/2"	61	9	18	72	100	138	40	13	66



VALVOLE DI PRESSIONE

DB

PILOT OPERATED PRESSURE RELIEF VALVES

ORDER CODE

DB							50													
----	--	--	--	--	--	--	----	--	--	--	--	--	--	--	--	--	--	--	--	--

NO CODE=  
=WITHOUT  
SOLENOID VALVE  
W=WITH  
SOLENOID VALVE

NO CODE=PILOT  
OPERATED VALVE  
C=PILOT OPERATED  
WITHOUT MAIN  
CARTRIDGE (NOT  
MARKED SIZE)  
C=PILOT OPERATED  
WITH MAIN CARTRIDGE  
(MARKED SIZE)

SUBPLATE MOUNTING  
SIZE:  
10, 20, 30  
THREADED CONNECTION  
SIZE:  
10, 15, 20, 25, 30

A=NORMAL CLOSED  
B=NORMAL OPENED

NO CODE=SUBPLATE MOUNTING  
G=THREAD CONNECTION

1=HANDLE  
2=ADJUSTING BOLT WITH  
PROTECT COVER  
3=KNOB WITH HANDLE

30=30 SERIES  
50=50 SERIES

50=MAX. PRESSURE 5 MPA  
100=MAX. PRESSURE 10 MPA  
200=MAX. PRESSURE 20 MPA  
315=MAX. PRESSURE 31.5 MPA  
350=MAX. PRESSURE 35 MPA

NO CODE=  
=NBR SEALS  
V=FKM SEALS

PILOT OPERATED  
DRAINAGE PORT  
THREAD:  
NO CODE=G1/4  
2=M14x1.5

R10=DAMPING Ø1.0 IN  
SOLENOID VALVE PORT B

Z5L=SQURE PLUG  
WITH LAMP  
Z4=SQURE PLUG

NO CODE=WITHOUT  
CONGEALED HAND EMERGENCY  
N=WITH HAND EMERGENCY

G12=DC12V  
G24=DC24V  
W220/110=220/110V AC  
W220R/W110R=  
=220/110V AC RECTIFIED

NO CODE=STANDARD TYPE  
U=MINIMUM SETTING PRESSURE IS  
LOWER TYPE

NO CODE=INTERNAL SUPPLY,  
INTERNAL DRAIN  
X=EXTERNAL SUPPLY, INTERNAL DRAIN  
Y=INTERNAL SUPPLY, EXTERNAL DRAIN  
XY=EXTERNAL SUPPLY, EXTERNAL DRAIN