



iEAST

Wireless Stereo Amplifier
AM160

Quick Start Guide
Wireless Multi-room Audio System

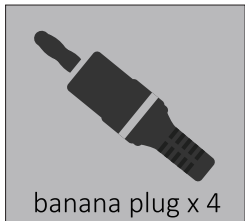
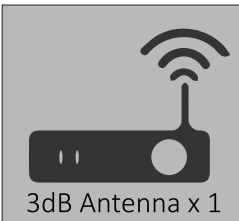
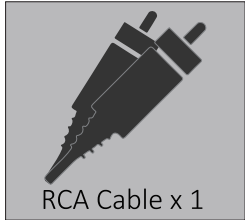
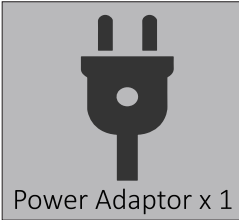
Introduction

This amplifier is designed to turn the traditional amplifiers into wireless amplifiers, which can also perform multi-room audio functionality to any pair of stereo speakers. The specialized iOS and Android applications offer you the easiest way to set up a Wireless Multi-Room Sound System. SoundStream also provides the most powerful playback option, which allows you to stream synchronized music or different music from cell phone/Spotify, Tidal, vTuner and other online music services/NAS/UPnP Network/flash driver/HDD. Featuring advanced Class D digital amplifier, this amplifier delivers 80 watts of power per channel, with low distortion and high current capability.

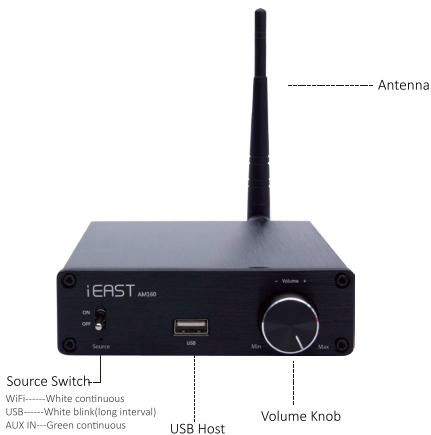
What's In The Package



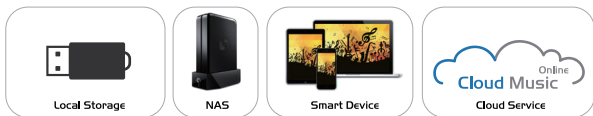
Device unit x 1



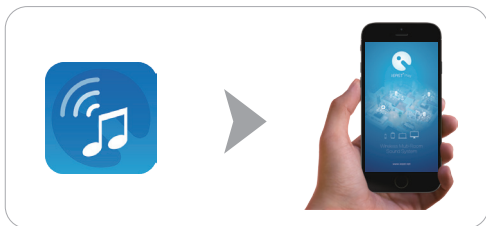
Interface



How It Works



Wi-Fi Router



Speaker

App Download

- To use your wireless amplifier, please download iEast Play App from App Store or Play Store.



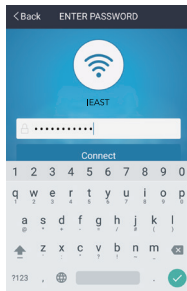
available in store:



Connection Option 1

Wireless Connection for iOS and Android devices

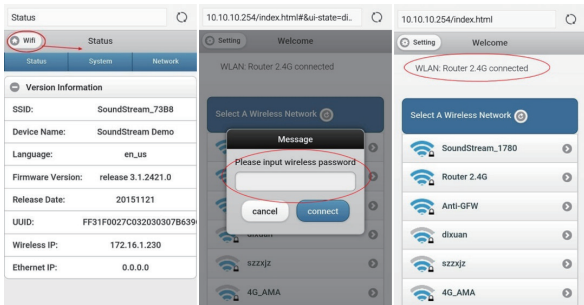
- Connect your cellphone to your home network.
- Run iEast Play App and choose Add Device.
- Type the password of your home router in iEast Play App.
- Press WPS button on amplifier to configure.



*Once connected, the device will be encrypted, the password is the same as your router's. To connect more units, no need to input password.

Connection Option 2

- Enter "Setting" -> directly connect wireless amplifier.
- After connecting with your wireless amplifier, you can stream local music from the phone to the speaker.
- To open the control platform enter <http://10.10.10.254/> into your browser.
- Choose WiFi-> your WiFi Router-> enter the password and you should connect successfully.



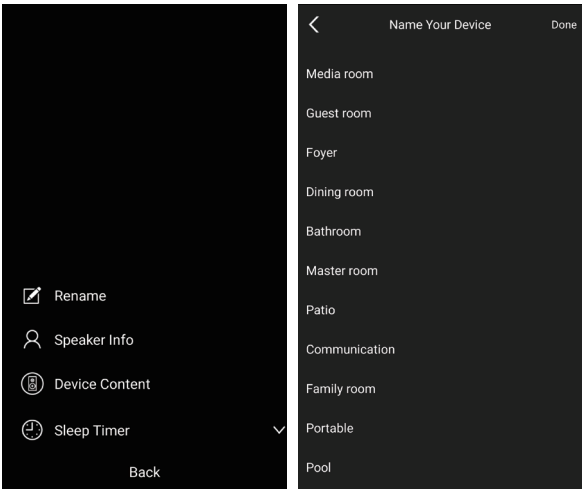
Connection Option 3

The device can be directly connected via LAN W/O. input the password. Users should follow steps to get the device encrypted:

Setting>Speaker info>Device password.

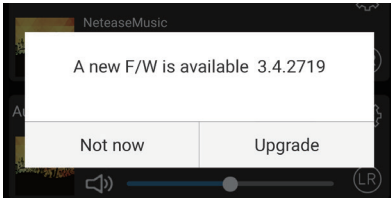
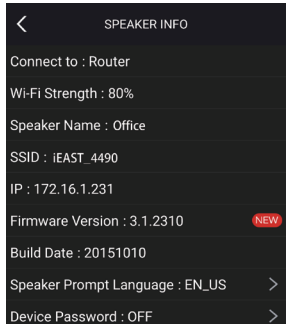
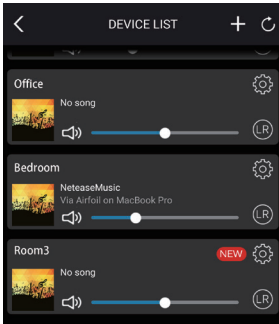
Name Your Device

- After login, you can name your device as follows



Firmware Upgrade

- OTA upgrade can be done globally as follows.



Multi-Room Streaming Control

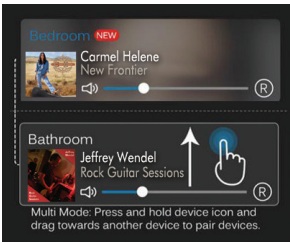
- Wireless amplifier can be set up in different groups, such as “all rooms play same song”, “two rooms play song A, three rooms play song B”, or “each room plays a different song”, etc.

- To Set up Multi-room

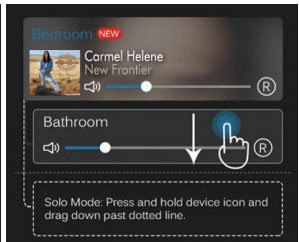
On the control panel press one device and hold, drag it above the device you would like to pair it with.

- To Remove Multi-Room:

On the control panel, press the device you want to remove and hold, then drag it to the blank space.



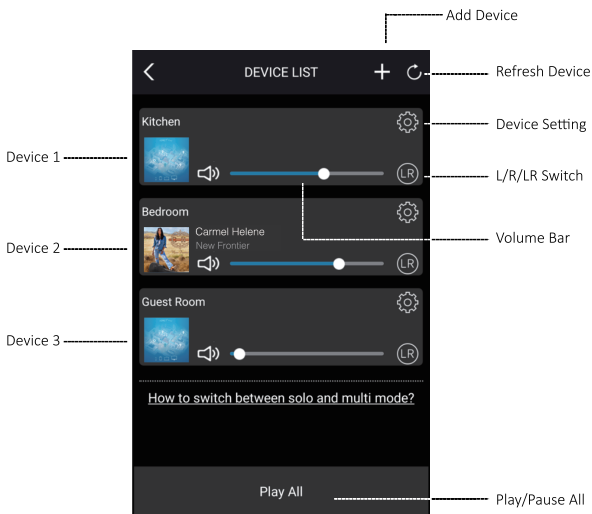
Set up Multi-room



Remove Multi-Room

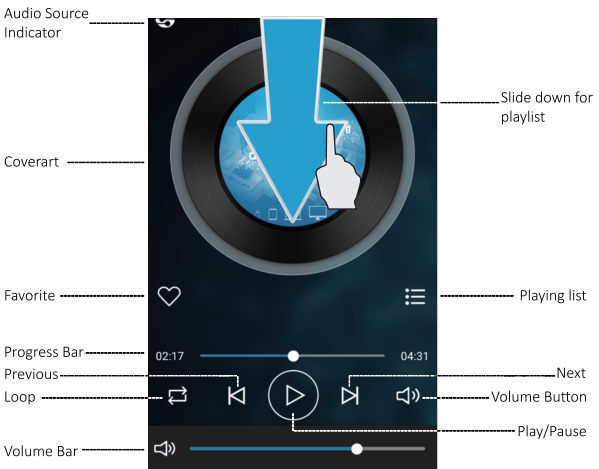
Device Control

Device control includes multi-room streaming control, multi-channel control, device setting, device rename, speaker info, password setup, language setting, timing power off, music alarm.



Playback Menu

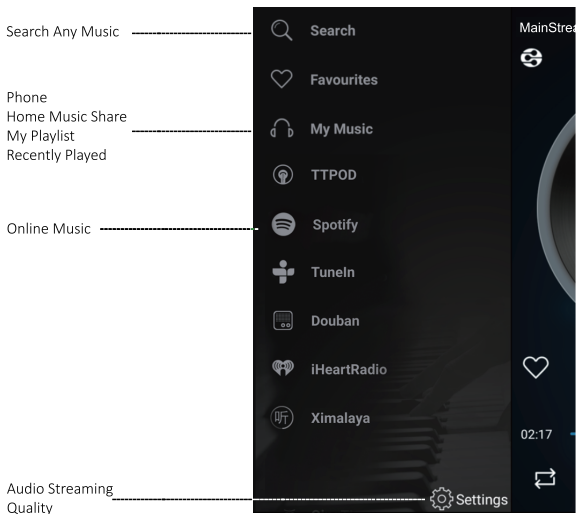
Playback offers a comprehensive control for music playback. It will change the background color and cover art according to your music style.



Audio Source

The playlist will be shown under this menu:

- My Music: Local stored music/Home Music Share
- Spotify: Spotify streaming requires a subscription with premium account, it will jump to Spotify app to stream.



- * Apple music is only available on the Apple products via airplay.
- * Online music service will change subject to updates.

Spotify

In order to use Spotify on the iEAST AM160, you need install Spotify on your connected smartphone or tablet. Go to the App Store or the Play Store and search for the Spotify App. Install the Spotify App and login into your account. If you donot have an account, you need set one up.

Note: In order to use Spotify on the iEAST AM160, you have you subscribe a premium Spotify account.

* The Spotify software is subject to third party licenses found here: www.spotify.com/connect/third-party-licenses

FAQ

1. Does it support Airplay and third-party DLNA apps?

Yes, it supports Airplay perfectly and third-party DLNA apps, such as BubbleUPNP, AllCast, iMediaShare...

2. Can you suggest some NAS brand which is well compatible with your device?

Qnap and Synology are suggested NAS device, open the DLNA option in setting

3. How many rooms does the system support to group up?

Up to eight, when in good wifi condition.

4. What is the distance your wireless audio system can cover?

Our system connects with your home router, you can stream your music anywhere WiFi signal covers.

5. Can it work without Internet?

Our device will also give WiFi hotspot itself. You can stream the music from your mobile device by connecting the device hotspot.

6. What it will happen when call coming in? Can I do other things when stream music?

Our system can run in the background, it will keep playing while you are having a call, and you can also do other things, like playing games.

7. Can it play high resolution music? Does it support 24bit/192khz sample rate?

Yes, our device can play APE, FLAC within normal bit rate range. It also supports decoding 24bit/192khz music files.

8. How many languages does the App have?

Currently, we have English, French, German, Spanish and will offer more by online update.

Our device will auto-detect your mobile device language and switch to it automatically .

Warning

This equipment has been tested and found to comply with the limits for a Class B digital device, pursuant to part 15 of the FCC Rules. These limits are designed to provide reasonable protection against harmful interference in a residential installation. This equipment generates uses and can radiate radio frequency energy and, if not installed and used in accordance with the instructions, may cause harmful interference to radio communications. However, there is no guarantee that interference will not occur in a particular installation. If this equipment does cause harmful interference to radio or television reception, which can be determined by turning the equipment off and on, the user is encouraged to try to correct the interference by one or more of the following measures:

- Reorient or relocate the receiving antenna.
- Increase the separation between the equipment and receiver.
- Connect the equipment into an outlet on a circuit different from that to which the receiver is connected.
- Consult the dealer or an experienced radio/TV technician for help.



© Copyright 2016 by iEAST. All Rights Reserved.

The information contained in this manual is believed to be accurate and reliable. iEAST assumes no responsibility for any errors contained in this manual. iEAST reserves the right to make changes in the specifications and/or design of the above mentioned product without prior notice. The diagrams contained in this manual may also not fully represent the product that you are using and they are for illustration purposes only. iEAST assumes no responsibility for any differences between the product mentioned in this manual and the product you may have.