

## Series UHE; with integrated overflow valve and bypass

1.5

### Technical selection chart:

Direction of rotation of the pumps **I** = indirect – counterclockwise  
**D** = direct – clockwise

The direction of rotation can only be changed in the factory. Therefore please assure that you state the desired direction of rotation as per dimension sheet when ordering. Standard design of the pump for two pipe installation, design for one pipe installation on enquiry!



### hp-Internal gear pumps up to 40 bar (direction of rotation **I** = direct – counter clockwise)

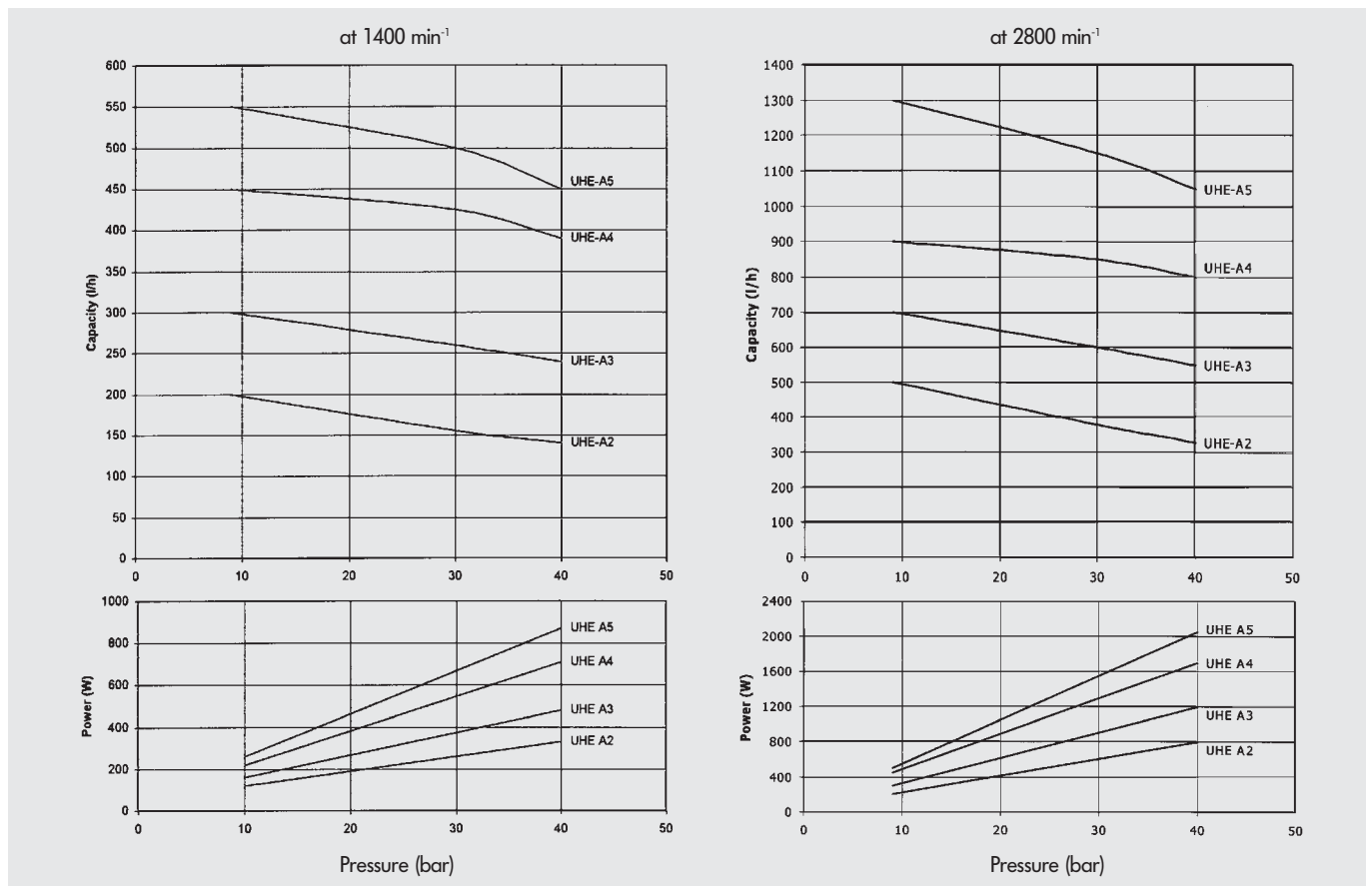
Pump series <b>UHE</b>	Viscosity: 6 mm <sup>2</sup> sec <sup>-1</sup> bei 20 °C								Gear rotor size Ø	Shaft Ø	Threaded connection for (S/A/R)	Manometer connection (M1/M2)	Max. allowed pump RPM (min <sup>-1</sup> )	Net weight (kg)
	n = 1400 min <sup>-1</sup> Discharge l/h				n = 2800 min <sup>-1</sup> Discharge l/h									
	at 9 bar	at 30 bar	at 40 bar	Article-no. <b>I</b>	at 9 bar	at 30 bar	at 40 bar	Article-no. <b>I</b>						
UHE-A2-PZ	200	155	140	0110542	500	380	330	0130542	38	12	G1/2"	G1/4"	2800	4,4
UHE-A3-P	300	260	240	0110543	700	600	550	0130543	38	12	G1/2"	G1/4"	2800	4,6
UHE-A4-M	450	425	390	0110544	900	850	800	0130544	38	12	G1/2"	G1/4"	2800	4,8
UHE-A5-GZ	550	500	450	0110545	1300	1150	1050	0130545	38	12	G1/2"	G1/4"	2800	5,0

### hp-Internal gear pumps up to 40 bar (direction of rotation **D** = direct – clockwise)

Pump series <b>UHE</b>	Viscosity: 6 mm <sup>2</sup> sec <sup>-1</sup> bei 20 °C								Gear rotor size Ø	Shaft Ø	Threaded connection for (S/A/R)	Manometer connection (M1/M2)	Heating capacity H2 in Watt at 230V, 50 Hz	Initial pump breakaway torque (Nm)
	n = 1400 min <sup>-1</sup> Discharge l/h				n = 2800 min <sup>-1</sup> Discharge l/h									
	at 9 bar	at 30 bar	at 40 bar	Article-no. <b>D</b>	at 9 bar	at 30 bar	at 40 bar	Article-no. <b>D</b>						
UHE-A2-PZ	200	155	140	0120542	500	380	330	0140542	38	12	G1/2"	G1/4"	110	1,6
UHE-A3-P	300	260	240	0120543	700	600	550	0140543	38	12	G1/2"	G1/4"	110	1,6
UHE-A4-M	450	425	390	0120544	900	850	800	0140544	38	12	G1/2"	G1/4"	110	1,6
UHE-A5-GZ	550	500	450	0120545	1300	1150	1050	0140545	38	12	G1/2"	G1/4"	110	1,6

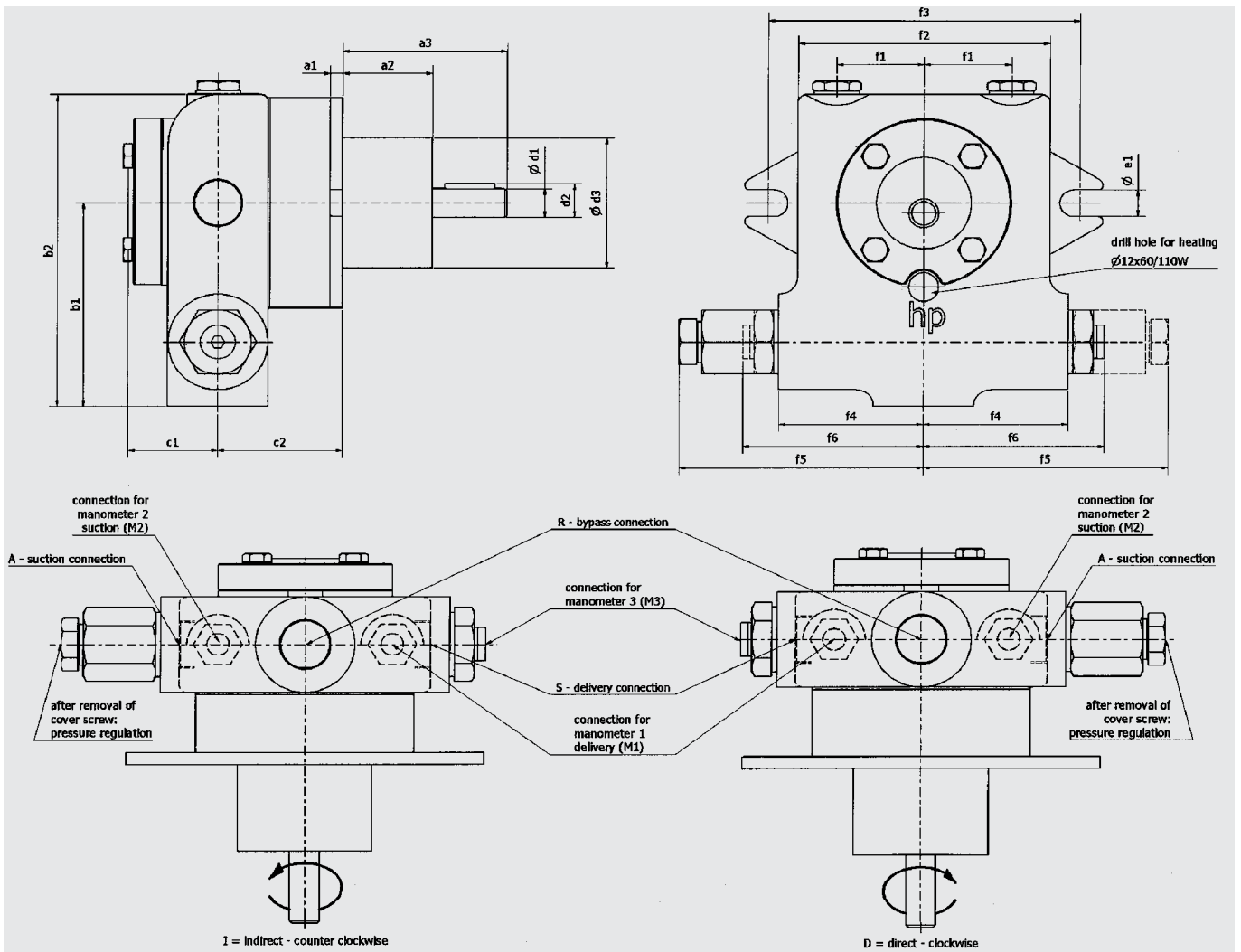
### Characteristics hp-Industrial pumps

Series UHE - AX; for fuel oil L / EL



Scaled drawings for series UHE

1.5



Pipe connections DIN ISO 228

Series	a1	a2	a3	b1	b2	c1	c2	d1	d2	d3
UHE-A2-PZ	5	36	66	85	130	36	50	12	13,5	54
UHE-A3-P	5	36	66	85	130	36	54	12	13,5	54
UHE-A4-M	5	36	66	85	130	36	58	12	13,5	54
UHE-A5-GZ	5	36	66	85	130	36	64	12	13,5	54

Series	e1	f1	f2	f3	f4	f5	f6	S; A; R	M1; M2	M3
UHE-A2-PZ	11	35	101	125	58	98	72,5	1/2"	G1/4"	1/8"
UHE-A3-P	11	35	101	125	58	98	72,5	1/2"	G1/4"	1/8"
UHE-A4-M	11	35	101	125	58	98	72,5	1/2"	G1/4"	1/8"
UHE-A5-GZ	11	35	101	125	58	98	72,5	1/2"	G1/4"	1/8"

Accessories for UHE-series

Axial face seal: see page 18 (gear rotor size Ø 38)

hp-Electric standby and companion heaters series H2, for hp-Industrial pumps

All hp-Industrial pumps series UHE-AX can be equipped with electric heating, series H2, at the factory.

