

MN1 Serisi Mini Siviçler

- Yüksek doğruluk
- Geniş uygulama alanları için ürün çeşitliliği
- Uzun ömür
- Yüksek kontak güvenilirliği
- Standart montaj delikleri

Teknik Bilgiler

Mekanik Ömür	: 500.000 açma-kapama min.
Elektriksel Ömür	: 100.000 açma-kapama min.
Çalışma Sıcaklığı	: T125
Çalışma Sıklığı	: Mekanik 60 açma-kapama/dakika Elektriksel 30 açma-kapama/dakika
Anma İşletme Gerilimi Ue	: 440 V AC
Anma İşletme Akımı Ie	: 10 A
İzolasyon Direnci	: 10 M Ω min. (500 V DC)
Kontakt Direnci	: maks. 15 m Ω
Dielektrik Mukavemeti	: (1 dakika için) 1500 V AC
Rutubet	: maks. %80
Standart	: TS EN 60947-5-1



MN1 Series Mini Switches

- High precision
- Variety of products for wide application fields
- Long life time
- High contact reliability
- Standard mounting holes

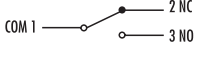
Technical Information

Mechanical Life	: 500.000 operations min.
Electrical Life	: 100.000 operations min.
Operating Temperature	: T 125
Operating Frequency	: Mechanical 60 operations/minute Electrical 30 operations/minute
Rated Operating Voltage Ue	: 440 V AC
Rated Operating Current Ie	: 10 A
Insulation Resistance	: 10 M Ω min. (500 V DC)
Contact Resistance	: max. 15 m Ω
Dielectrical Strength	: (for 1 minute) 1500 V AC
Humidity	: max. 80%
Standard	: TS EN 60947-5-1



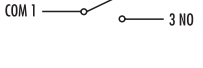
Asal Siviçler

Basic Switches

Sipariş Kodu Order Code	Kontakt Yapısı Contact Type	Kontakt Şeması Contact Scheme	Duyar Blok Tipi End Unit Type	Duyar Blok Malzemesi End Unit Material
MN1KIM1	1 Değişebilen Kontakt 1 Changeover Contact		Kol Hinge Lever	Metal Metal

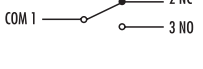


Kısa Kollu
Short Hinge Lever

Sipariş Kodu Order Code	Kontakt Yapısı Contact Type	Kontakt Şeması Contact Scheme	Duyar Blok Tipi End Unit Type	Duyar Blok Malzemesi End Unit Material
MN1KIM2	1 Değişebilen Kontakt 1 Changeover Contact		Kol Hinge Lever	Metal Metal

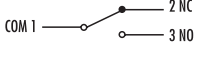


Orta Kollu
Medium Hinge Lever

Sipariş Kodu Order Code	Kontakt Yapısı Contact Type	Kontakt Şeması Contact Scheme	Duyar Blok Tipi End Unit Type	Duyar Blok Malzemesi End Unit Material
MN1KIM3	1 Değişebilen Kontakt 1 Changeover Contact		Kol Hinge Lever	Metal Metal




Uzun Kollu
Long Hinge Lever

Sipariş Kodu Order Code	Kontakt Yapısı Contact Type	Kontakt Şeması Contact Scheme	Duyar Blok Tipi End Unit Type	Duyar Blok Malzemesi End Unit Material
MN1MiM1	1 Değişebilen Kontakt 1 Changeover Contact		Kollu Makara Hinge Lever	Metal Metal



Kısa Kollu Makaralı
Short Hinge Roller Lever

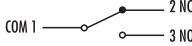
Sipariş Kodu Order Code	Kontakt Yapısı Contact Type	Kontakt Şeması Contact Scheme	Duyar Blok Tipi End Unit Type	Duyar Blok Malzemesi End Unit Material
MN1MiM1Y	1 Değişebilen Kontakt 1 Changeover Contact		Kollu Makara Hinge Lever	Metal Metal



Uzun Kollu Yaylı Makaralı
Long Hinge Roller Lever With Springs

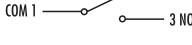


Uzun Kollu Makaralı
Long Hinge Roller Lever

Sipariş Kodu Order Code	Kontakt Yapısı Contact Type	Kontakt Şeması Contact Scheme	Duyar Blok Tipi End Unit Type	Duyar Blok Malzemesi End Unit Material
MN1MIM2	1 Değişebilen Kontakt 1 Changeover Contact		Kollu Makara Hinge Lever	Metal Metal

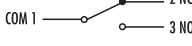


Pimli Eksene Paralel Makaralı
Panel Mount Roller Plunger

Sipariş Kodu Order Code	Kontakt Yapısı Contact Type	Kontakt Şeması Contact Scheme	Duyar Blok Tipi End Unit Type	Duyar Blok Malzemesi End Unit Material
MN1MUM3	1 Değişebilen Kontakt 1 Changeover Contact		Pimli Makara Plunger	Metal Metal

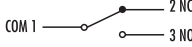


Pimli Eksene Dik Makaralı
Panel Mount Cross Roller Plunger

Sipariş Kodu Order Code	Kontakt Yapısı Contact Type	Kontakt Şeması Contact Scheme	Duyar Blok Tipi End Unit Type	Duyar Blok Malzemesi End Unit Material
MN1MUM8	1 Değişebilen Kontakt 1 Changeover Contact		Pimli Makara Plunger	Metal Metal

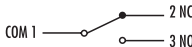


İnce Kısa Pimli
Pin Plunger

Sipariş Kodu Order Code	Kontakt Yapısı Contact Type	Kontakt Şeması Contact Scheme	Duyar Blok Tipi End Unit Type	Duyar Blok Malzemesi End Unit Material
MN1PUM1	1 Değişebilen Kontakt 1 Changeover Contact		Pim Plunger	Metal Metal

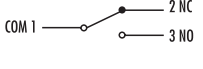


İnce Uzun Pimli
Spring Plunger

Sipariş Kodu Order Code	Kontakt Yapısı Contact Type	Kontakt Şeması Contact Scheme	Duyar Blok Tipi End Unit Type	Duyar Blok Malzemesi End Unit Material
MN1PUM3	1 Değişebilen Kontakt 1 Changeover Contact		Pim Plunger	Metal Metal

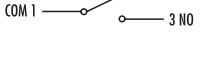
Asal Siviçler

Basic Switches

Sipariş Kodu Order Code	Kontakt Yapısı Contact Type	Kontakt Şeması Contact Scheme	Duyar Blok Tipi End Unit Type	Duyar Blok Malzemesi End Unit Material
MN1PUM7	1 Değişebilen Kontakt 1 Changeover Contact		Pim Plunger	Metal Metal




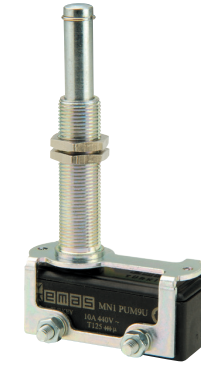
Kalın Kısa Pimli
Short Spring Plunger

Sipariş Kodu Order Code	Kontakt Yapısı Contact Type	Kontakt Şeması Contact Scheme	Duyar Blok Tipi End Unit Type	Duyar Blok Malzemesi End Unit Material
MN1PUM9	1 Değişebilen Kontakt 1 Changeover Contact		Pim Plunger	Metal Metal



Kalın Uzun Pimli
Panel Mount Plunger

Sipariş Kodu Order Code	Kontakt Yapısı Contact Type	Kontakt Şeması Contact Scheme	Duyar Blok Tipi End Unit Type	Duyar Blok Malzemesi End Unit Material
MN1PUM9U	1 Değişebilen Kontakt 1 Changeover Contact		Pim Plunger	Metal Metal



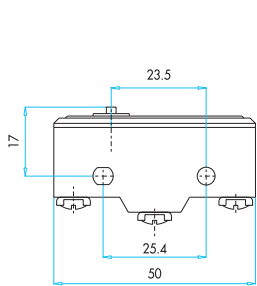
Ekstra Uzun Metal Pimli
Extra Long Metal Plunger

Sipariş Kodu Order Code	Kapak Malzemesi Cover Material	Rakor Malzemesi Connection Material
MN1YKAP	Plastik Plastic	Lastik Rubber

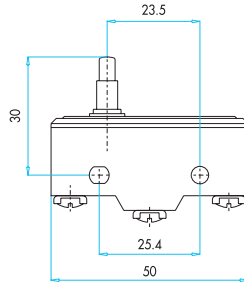


Plastik Koruma Kapağı
Plastic Protection Cover

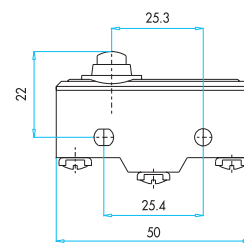
BOYUTLAR (mm) / DIMENSIONS (mm)



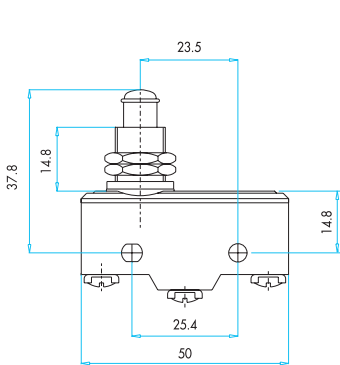
MN1PUM1



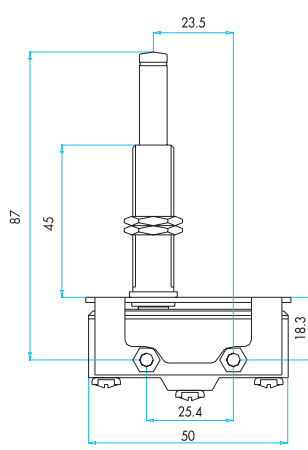
MN1PUM3



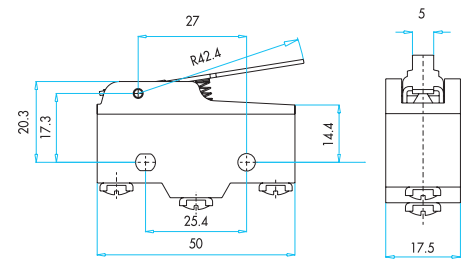
MN1PUM7



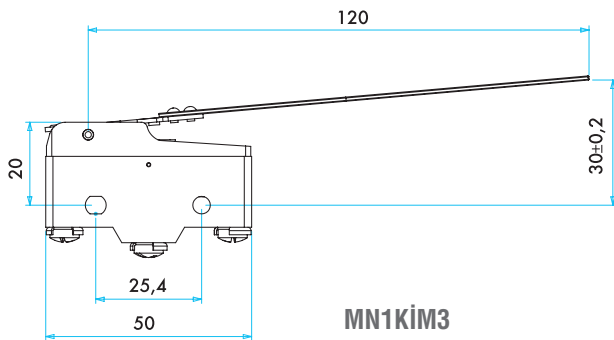
MN1PUM9



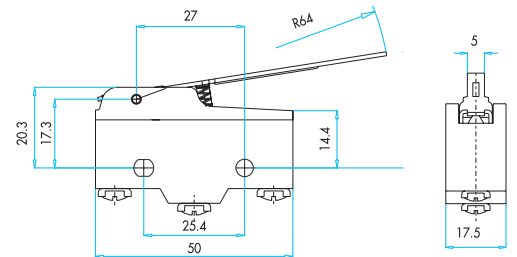
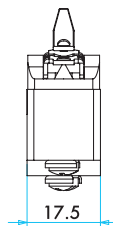
MN1PUM9U



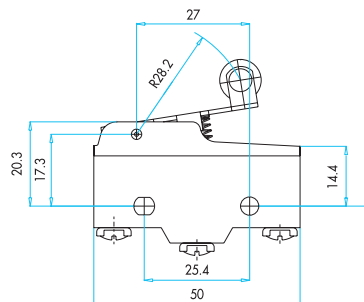
MN1KİM1



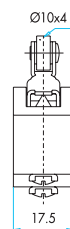
MN1KİM3



MN1KİM2



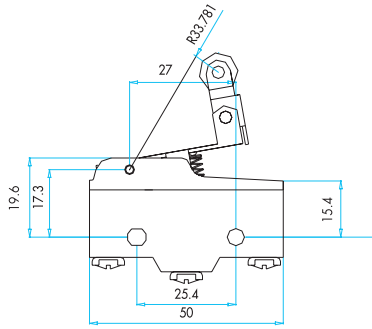
MN1MİM1



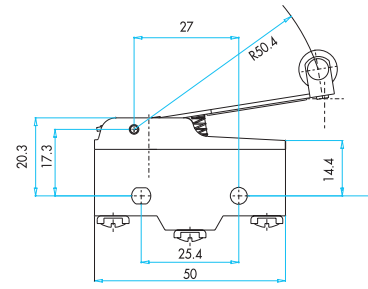
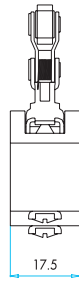
Asal Siviçler

Basic Switches

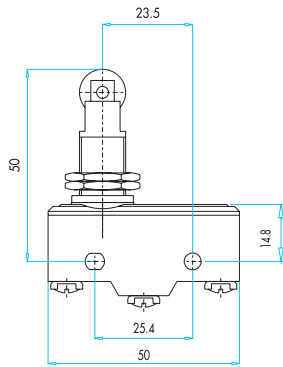
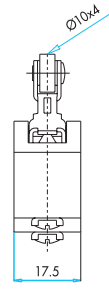
BOYUTLAR (mm) / DIMENSIONS (mm)



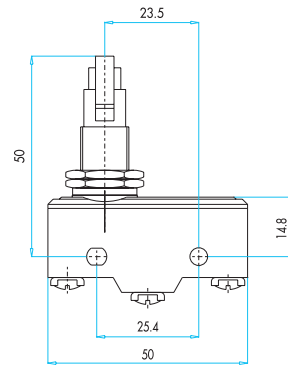
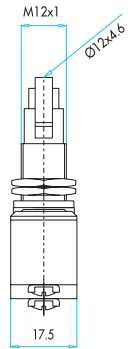
MN1MİM1



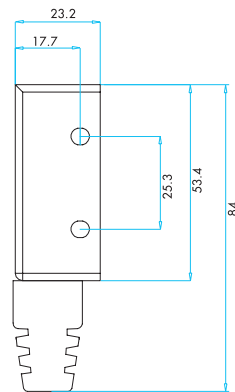
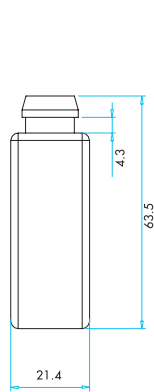
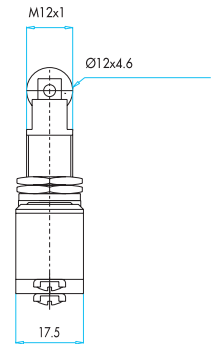
MN1MİM2



MN1MUM3



MN1MUM8



MN1YKAP



MN2 Serisi Mini Siviçler

- Yüksek doğruluk
- Geniş uygulama alanları için ürün çeşitliliği
- Uzun ömür
- Yüksek kontak güvenilirliği
- Standart montaj delikleri

Teknik Bilgiler

Mekanik Ömür	: 500.000 açma-kapama min.
Elektriksel Ömür	: 100.000 açma-kapama min.
Çalışma Sıcaklığı	: T125
Çalışma Sıklığı	: Mekanik 60 açma-kapama/dakika Elektriksel 30 açma-kapama/dakika
Anma İşletme Gerilimi Ue	: 440 V AC
Anma İşletme Akımı Ie	: 10 A
İzolasyon Direnci	: 10 MΩ min. (500 V DC)
Kontakt Direnci	: maks. 15 mΩ
Dielektrik Mukavemeti	: (1 dakika için) 1500 V AC
Rutubet	: maks. %80
Standart	: TS EN 60947-5-1



MN2 Series Mini Switches

- High precision
- Variety of products for wide application fields
- Long life time
- High contact reliability
- Standard mounting holes

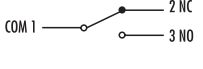
Technical Information

Mechanical Life	: 500.000 operations min.
Electrical Life	: 100.000 operations min.
Operating Temperature	: T 125
Operating Frequency	: Mechanical 60 operations/minute Electrical 30 operations/minute
Rated Operating Voltage Ue	: 440 V AC
Rated Operating Current Ie	: 10 A
Insulation Resistance	: 10 MΩ min. (500 V DC)
Contact Resistance	: max. 15 mΩ
Dielectrical Strength	: (for 1 minute) 1500 V AC
Humidity	: max. 80%
Standard	: TS EN 60947-5-1



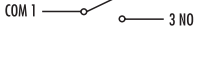
Asal Siviçler

Basic Switches

Sipariş Kodu Order Code	Kontakt Yapısı Contact Type	Kontakt Şeması Contact Scheme	Duyar Blok Tipi End Unit Type	Duyar Blok Malzemesi End Unit Material
MN2KİM1	1 Değişebilen Kontakt 1 Changeover Contact		Kol Hinge Lever	Metal Metal




Kısa Kollu
Short Hinge Lever

Sipariş Kodu Order Code	Kontakt Yapısı Contact Type	Kontakt Şeması Contact Scheme	Duyar Blok Tipi End Unit Type	Duyar Blok Malzemesi End Unit Material
MN2KİM2	1 Değişebilen Kontakt 1 Changeover Contact		Kol Hinge Lever	Metal Metal

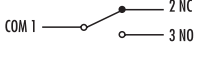


Orta Kollu
Medium Hinge Lever

Sipariş Kodu Order Code	Kontakt Yapısı Contact Type	Kontakt Şeması Contact Scheme	Duyar Blok Tipi End Unit Type	Duyar Blok Malzemesi End Unit Material
MN2KİM3	1 Değişebilen Kontakt 1 Changeover Contact		Kol Hinge Lever	Metal Metal




Uzun Kollu
Long Hinge Lever

Sipariş Kodu Order Code	Kontakt Yapısı Contact Type	Kontakt Şeması Contact Scheme	Duyar Blok Tipi End Unit Type	Duyar Blok Malzemesi End Unit Material
MN2MİM1	1 Değişebilen Kontakt 1 Changeover Contact		Kollu Makara Hinge Lever	Metal Metal



Kısa Kollu Makaralı
Short Hinge Roller Lever

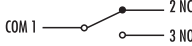
Sipariş Kodu Order Code	Kontakt Yapısı Contact Type	Kontakt Şeması Contact Scheme	Duyar Blok Tipi End Unit Type	Duyar Blok Malzemesi End Unit Material
MN2MİM1Y	1 Değişebilen Kontakt 1 Changeover Contact		Kollu Makara Hinge Lever	Metal Metal



Kısa Kollu Yaylı Makaralı
Short Hinge Roller Lever With Springs

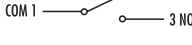


Uzun Kollu Makaralı
Long Hinge Roller Lever

Sipariş Kodu Order Code	Kontakt Yapısı Contact Type	Kontakt Şeması Contact Scheme	Duyar Blok Tipi End Unit Type	Duyar Blok Malzemesi End Unit Material
MN2MIM2	1 Değişebilen Kontakt 1 Changeover Contact		Kollu Makara Hinge Lever	Metal Metal

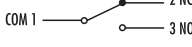


Pimli Eksene Paralel Makaralı
Panel Mount Roller Plunger

Sipariş Kodu Order Code	Kontakt Yapısı Contact Type	Kontakt Şeması Contact Scheme	Duyar Blok Tipi End Unit Type	Duyar Blok Malzemesi End Unit Material
MN2MUM3	1 Değişebilen Kontakt 1 Changeover Contact		Pimli Makara Plunger	Metal Metal

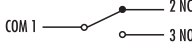


Pimli Eksene Dik Makaralı
Panel Mount Cross Roller Plunger

Sipariş Kodu Order Code	Kontakt Yapısı Contact Type	Kontakt Şeması Contact Scheme	Duyar Blok Tipi End Unit Type	Duyar Blok Malzemesi End Unit Material
MN2MUM8	1 Değişebilen Kontakt 1 Changeover Contact		Pimli Makara Plunger	Metal Metal

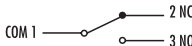


İnce Kısa Pimli
Pin Plunger

Sipariş Kodu Order Code	Kontakt Yapısı Contact Type	Kontakt Şeması Contact Scheme	Duyar Blok Tipi End Unit Type	Duyar Blok Malzemesi End Unit Material
MN2PUM1	1 Değişebilen Kontakt 1 Changeover Contact		Pim Plunger	Metal Metal




İnce Uzun Pimli
Spring Plunger

Sipariş Kodu Order Code	Kontakt Yapısı Contact Type	Kontakt Şeması Contact Scheme	Duyar Blok Tipi End Unit Type	Duyar Blok Malzemesi End Unit Material
MN2PUM3	1 Değişebilen Kontakt 1 Changeover Contact		Pim Plunger	Metal Metal


Asal Siviçler

Basic Switches

Sipariş Kodu Order Code	Kontakt Yapısı Contact Type	Kontakt Şeması Contact Scheme	Duyar Blok Tipi End Unit Type	Duyar Blok Malzemesi End Unit Material
MN2PUM7	1 Değişebilen Kontakt 1 Changeover Contact		Pim Plunger	Metal Metal

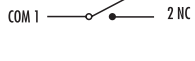



Kalın Kısa Pimli
Short Spring Plunger

Sipariş Kodu Order Code	Kontakt Yapısı Contact Type	Kontakt Şeması Contact Scheme	Duyar Blok Tipi End Unit Type	Duyar Blok Malzemesi End Unit Material
MN2PUM9	1 Değişebilen Kontakt 1 Changeover Contact		Pim Plunger	Metal Metal



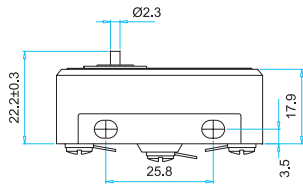
Kalın Uzun Pimli
Panel Mount Plunger

Sipariş Kodu Order Code	Kontakt Yapısı Contact Type	Kontakt Şeması Contact Scheme	Duyar Blok Tipi End Unit Type	Duyar Blok Malzemesi End Unit Material
MN2TİP11	1 Start NA 1 Start NO		Tutamak Handle	Plastik Plastic
MN2TİP12	1 Değişebilen Kontakt 1 Changeover Contact		Tutamak Handle	Plastik Plastic

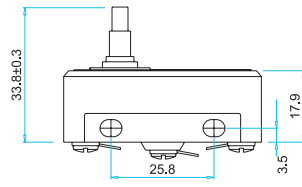


Plastik Tutamaklı
Plastic Handle

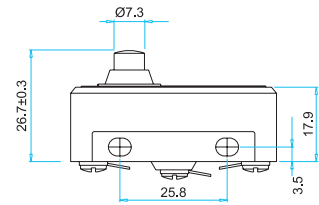
BOYUTLAR (mm) / DIMENSIONS (mm)



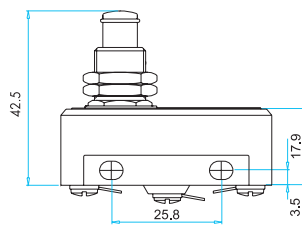
MN2PUM1



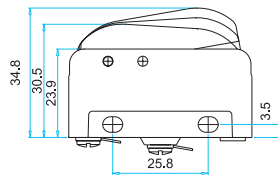
MN2PUM3



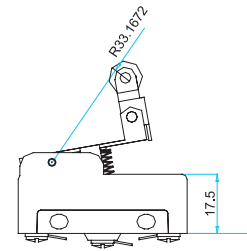
MN2PUM7



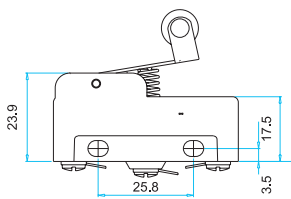
MN2PUM9



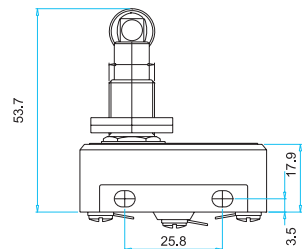
MN2TİP11/MN2TİP12



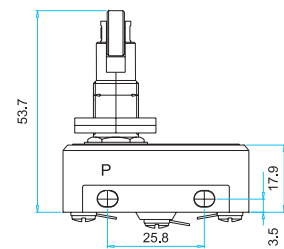
MN2MİM1Y



MN2MİM1



MN2MUM3

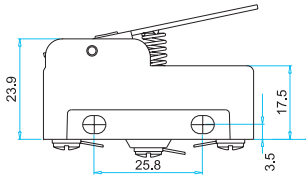


MN2MUM8

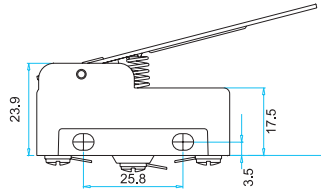
Asal Siviçler

Basic Switches

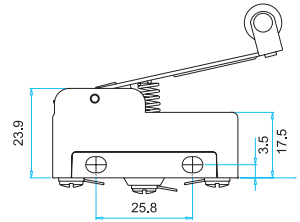
BOYUTLAR (mm) / DIMENSIONS (mm)



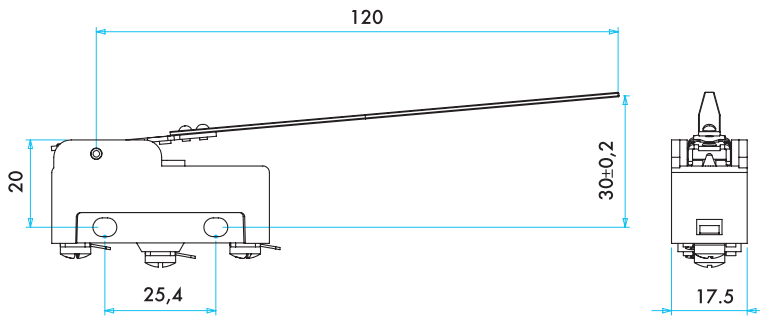
MN2KİM1



MN2KİM2



MN2MİM2



MN2KİM3

MN3 Serisi Metal Mini Siviçler

- Yüksek doğruluk
- Geniş uygulama alanları için ürün çeşitliliği
- Uzun ömür
- Yüksek kontak güvenilirliği
- Standart montaj delikleri

Teknik Bilgiler

Mekanik Ömür	: 1.000.000 açma-kapama min.
Elektriksel Ömür	: 100.000 açma-kapama min.
Çalışma Sıcaklığı	: -10/+40 °C
Çalışma Sıklığı	: Mekanik 50 açma-kapama/dakika Elektriksel 30 açma-kapama/dakika
Anma İşletme Gerilimi Ue	: 440 V AC
Anma İşletme Akımı Ie	: 10 A
İzolasyon Direnci	: 10 M Ω min. (500 V DC)
Kontakt Direnci	: maks. 15 m Ω
Dielektrik Mukavemeti	: (1 dakika için) 1500 V AC
Rutubet	: maks. %95
Frekans	: 50/60 Hz
Kirlenme Derecesi	: 3
Standart	: TS EN 60947-5-1



MN3 Series Metal Mini Switches

- High precision
- Variety of products for wide application fields
- Long life time
- High contact reliability
- Standard mounting holes

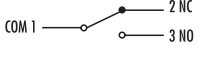
Technical Information

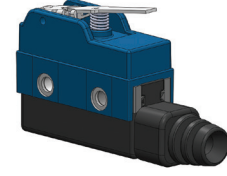
Mechanical Life	: 1.000.000 operations min.
Electrical Life	: 100.000 operations min.
Operating Temperature	: -10/+40 °C
Operating Frequency	: Mechanical 50 operations/minute Electrical 30 operations/minute
Rated Operating Voltage Ue	: 440 V AC
Rated Operating Current Ie	: 10 A
Insulation Resistance	: 10 M Ω min. (500 V DC)
Contact Resistance	: max. 15 m Ω
Dielectrical Strength	: (for 1 minute) 1500 V AC
Humidity	: max. 95%
Frequency	: 50/60 Hz
Pollution Degree	: 3
Standard	: TS EN 60947-5-1



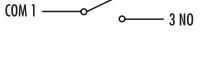
Asal Siviçler

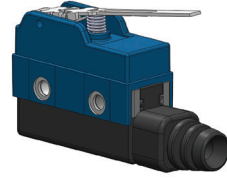
Basic Switches

Sipariş Kodu Order Code	Kontakt Yapısı Contact Type	Kontakt Şeması Contact Scheme	Duyar Blok Tipi End Unit Type	Duyar Blok Malzemesi End Unit Material
MN3KİM1	1 Değişebilen Kontakt 1 Changeover Contact		Kol Hinge Lever	Metal Metal




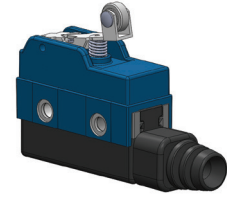
Kısa Kollu
Short Hinge Lever

Sipariş Kodu Order Code	Kontakt Yapısı Contact Type	Kontakt Şeması Contact Scheme	Duyar Blok Tipi End Unit Type	Duyar Blok Malzemesi End Unit Material
MN3KİM2	1 Değişebilen Kontakt 1 Changeover Contact		Kol Hinge Lever	Metal Metal

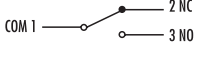


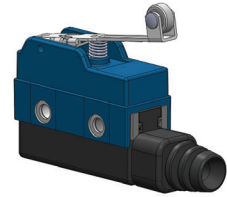
Uzun Kollu
Long Hinge Lever

Sipariş Kodu Order Code	Kontakt Yapısı Contact Type	Kontakt Şeması Contact Scheme	Duyar Blok Tipi End Unit Type	Duyar Blok Malzemesi End Unit Material
MN3MİM1	1 Değişebilen Kontakt 1 Changeover Contact		Kollu Makara Hinge Lever	Metal Metal




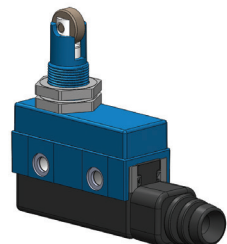
Kısa Kollu Makaralı
Short Hinge Roller Lever

Sipariş Kodu Order Code	Kontakt Yapısı Contact Type	Kontakt Şeması Contact Scheme	Duyar Blok Tipi End Unit Type	Duyar Blok Malzemesi End Unit Material
MN3MİM2	1 Değişebilen Kontakt 1 Changeover Contact		Kollu Makara Hinge Lever	Metal Metal

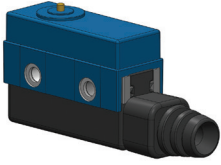


Uzun Kollu Makaralı
Long Hinge Roller Lever

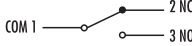
Sipariş Kodu Order Code	Kontakt Yapısı Contact Type	Kontakt Şeması Contact Scheme	Duyar Blok Tipi End Unit Type	Duyar Blok Malzemesi End Unit Material
MN3MUM3	1 Değişebilen Kontakt 1 Changeover Contact		Pimli Makara Plunger	Metal Metal

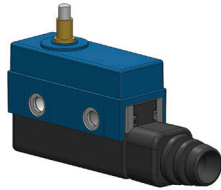


Pimli Eksene Paralel Makaralı
Panel Mount Roller Plunger

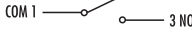


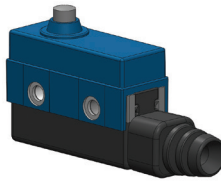
İnce Kısa Pimli
Pin Plunger

Sipariş Kodu Order Code	Kontakt Yapısı Contact Type	Kontakt Şeması Contact Scheme	Duyar Blok Tipi End Unit Type	Duyar Blok Malzemesi End Unit Material
MN3PUM1	1 Değişebilen Kontakt 1 Changeover Contact		Pim Plunger	Metal Metal

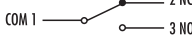


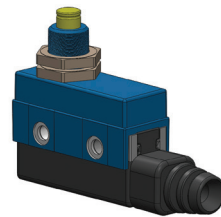
İnce Uzun Pimli
Spring Plunger

Sipariş Kodu Order Code	Kontakt Yapısı Contact Type	Kontakt Şeması Contact Scheme	Duyar Blok Tipi End Unit Type	Duyar Blok Malzemesi End Unit Material
MN3PUM3	1 Değişebilen Kontakt 1 Changeover Contact		Pim Plunger	Metal Metal

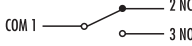


Kalın Kısa Pimli
Short Spring Plunger

Sipariş Kodu Order Code	Kontakt Yapısı Contact Type	Kontakt Şeması Contact Scheme	Duyar Blok Tipi End Unit Type	Duyar Blok Malzemesi End Unit Material
MN3PUM7	1 Değişebilen Kontakt 1 Changeover Contact		Pim Plunger	Metal Metal



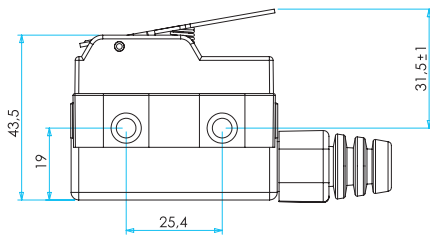
Kalın Uzun Pimli
Panel Mount Plunger

Sipariş Kodu Order Code	Kontakt Yapısı Contact Type	Kontakt Şeması Contact Scheme	Duyar Blok Tipi End Unit Type	Duyar Blok Malzemesi End Unit Material
MN3PUM9	1 Değişebilen Kontakt 1 Changeover Contact		Pim Plunger	Metal Metal

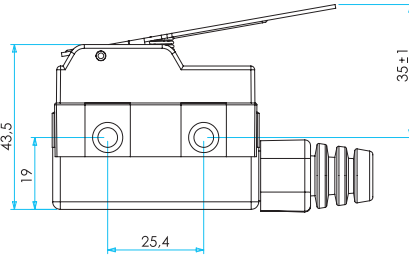
Asal Siviçler

Basic Switches

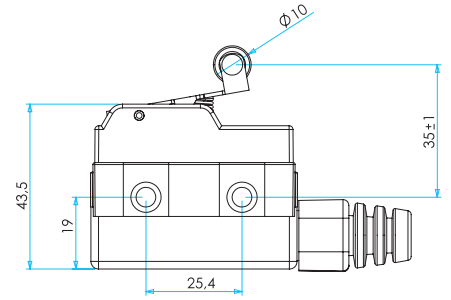
BOYUTLAR (mm) / DIMENSIONS (mm)



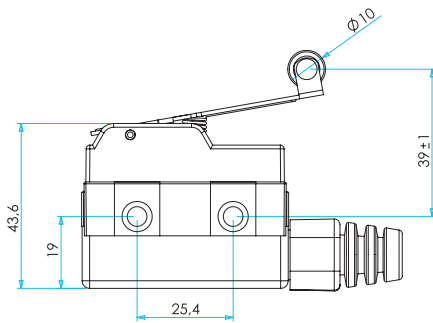
MN3KİM1



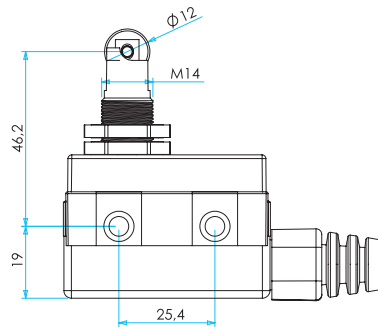
MN3KİM2



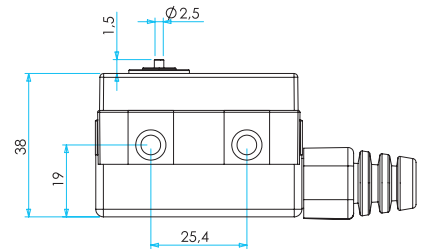
MN3MİM1



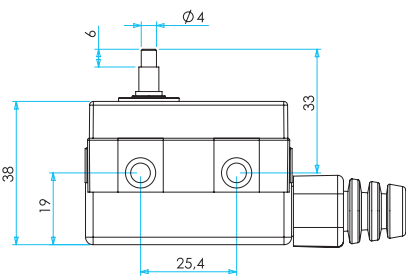
MN3MİM2



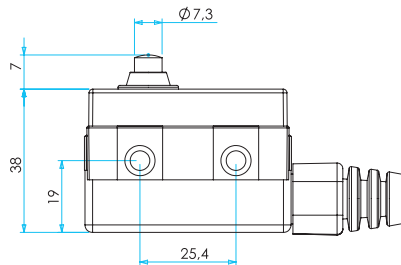
MN3MUM3



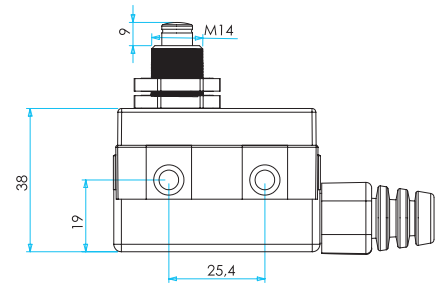
MN3PUM1



MN3PUM3



MN3PUM7



MN3PUM9