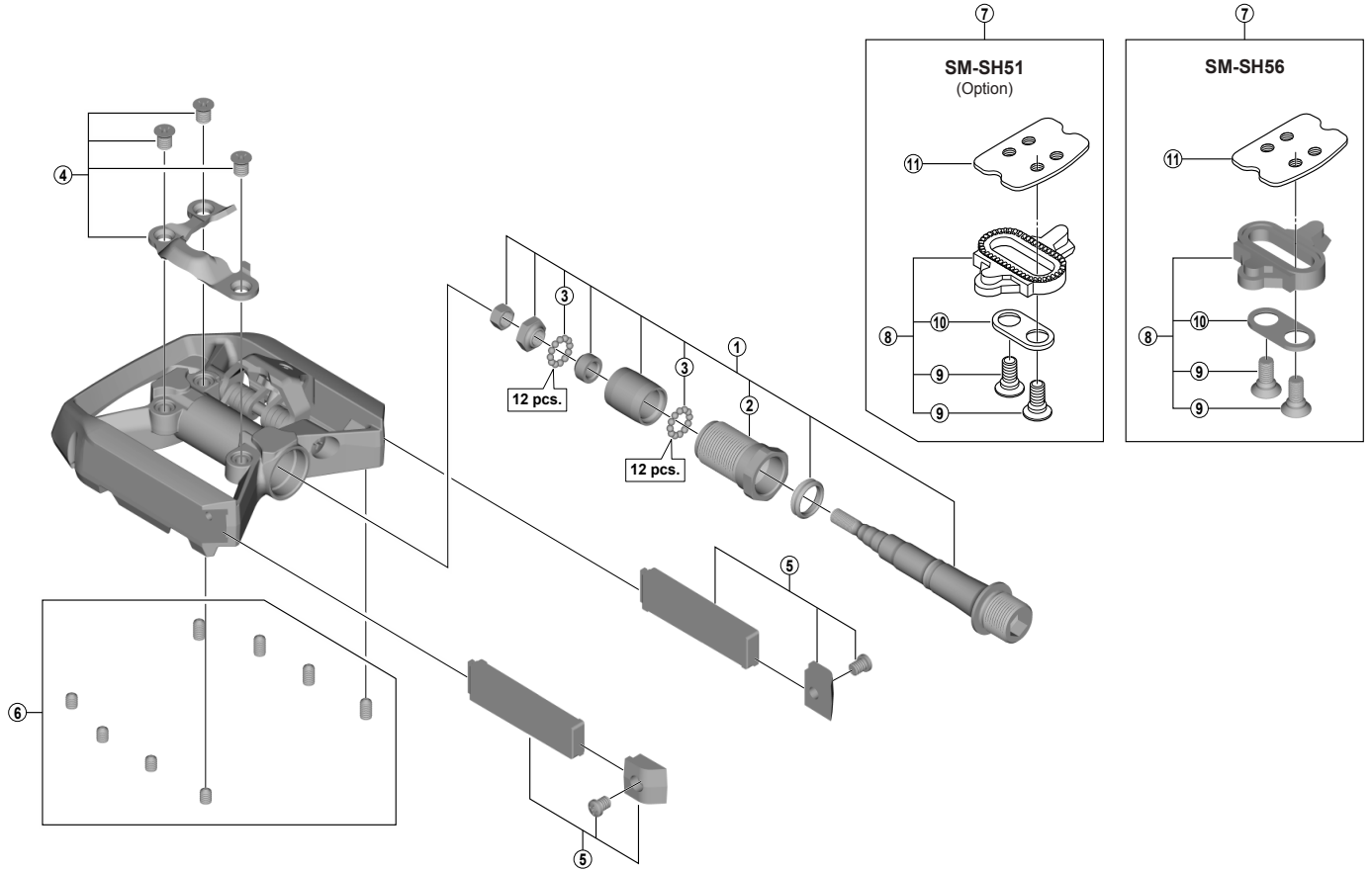


DEORE XT SPD/Flat Pedals

PD-T8000



ITEM NO.	SHIMANO CODE NO.	DESCRIPTION	INTERCHANGEABILITY	
			PD-T780	PD-M8000
1	Y46P98040	Pedal Axle Assembly (Right / B.C.9/16" x 20T.P.I.)	B	B
	Y46P98020	Pedal Axle Assembly (Left / B.C.9/16" x 20T.P.I.)	B	B
2	Y45E98030	Lock Bolt (Right)	A	A
	Y45E98040	Lock Bolt (Left)	A	A
3	Y41N98030	Steel Ball (3/32") 62 pcs.	A	A
4	Y46K98030	Body Cover (Right) & Fixing Bolts (M5)	A	A
	Y46K98040	Body Cover (Left) & Fixing Bolts (M5)	A	A
5	Y46P98030	Reflector Unit	A	
	YL8498040	Reflector Unit (AS)		
6	YL8498050	Pins (S-size / 8 pcs.)		
	YL8498060	Pins (L-size / 8 pcs.)		
7	Y42498220	SM-SH51 Cleat Set (Single Release Mode / Pair)	A	A
	Y41S98092	SM-SH56 Cleat Set (Multiple Release Mode / Pair)	A	A
8	Y42498201	SM-SH51 Cleat Set w/o Cleat Nut (Single Release Mode / Pair)	A	A
	Y41S98100	SM-SH56 Cleat Set w/o Cleat Nut (Multiple Release Mode / Pair)	A	A
9	Y41704030	Cleat Fixing Bolt (1 pc.)	A	A
10	Y42423000	Cleat Adapter (1 pc.)	A	A
11	YLOE04000	Cleat Nut (1 pc.)	A	A

A: Same parts.

B: Parts are usable, but differ in materials, appearance, finish, size, etc.

Absence of mark indicates non-interchangeability.

Specifications are subject to change without notice.

Oct.-2016-4032

© Shimano Inc. I

SHIMANO