

COBP M45 AI



MODEL KM-40 系說明書 MODEL KM-40 INSTRUCTION MANUAL

KWC KIEN WELL TOY INDUSTRIAL CO., LTD
www.kwcgun.com

台南市東區自由路2段209巷5號
NO.5, LANE 209, SEC. 2,
ZIH YOU RD., EAST DISTRICT
70157, TAINAN, TAIWAN
TEL:+886-6-269-1815
sales@kwcgun.com
www.kwcgun.com

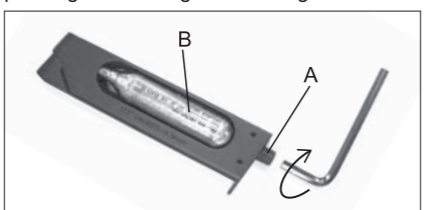
- NON-DROWBACK 4.5mm AIR GUN
- ENERGY 2.5 joules 120 m/s VELOCITY
- BB CAPACITY 21 rds. 177 Caliber(4.5 mm)
- NON-ROOH SERIES 840g FULLY METAL
- NON-ROOH SERIES 408g HALF METAL
- LENGTH 220 mm
- MAGAZINE KW 154
- FILED HOP UP SYSTEM

射擊/SHOOTING

射擊前的準備 BEFORE SHOOTING

- 按下卡榫
Press the button.
- 取出彈匣
Release the magazine.
- 使用六角板手反時針方向取出彈匣底內件。
Use hexagonal wrench to remove the magazine cap by counter clockwise.

- 逆時針轉出彈匣底內件後，置入小鋼瓶B，再以順時針方向鎖緊彈匣底內件A。當刺破鋼瓶出氣時，請快速鎖緊。
Turn the magazine cap a out counter-clockwise and place CO2 cartridge B inside the magazine. Rapidly turn the screw A clockwise when piercing the cartridge in the magazine.



- 拉下滑粒。
Pull the magazine follower down.
- 填裝BB彈
Loading BBs
為了使擊發順暢，填裝方法是讓B. B彈在彈匣中一粒接著一粒。
For smooth shooting, Load BBs one by one.

- 最多可裝21粒。
Maximum BB capacity is 21 rounds.

射擊 SHOOTING

- 將裝好BB彈的彈匣插入槍身往上推入，直到彈匣卡榫發出"卡噠"為止。Insert fully loaded magazine in the airgun until you hear the sound of "CLICK".

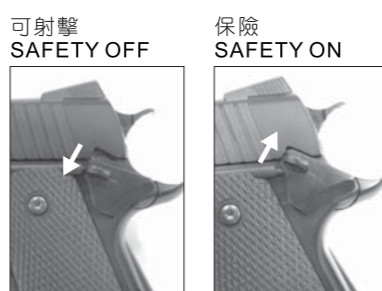


- 瞄準目標物扣引扳機，即可擊發。
Aim the target and pull the trigger.



- ※注意：在長期不使用的狀態下，請將彈匣內的氣體洩放掉。
- CAUTION: Release all the gas in the magazine when it will be unused for a long period of time.

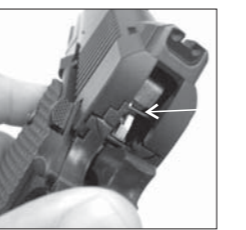
安全裝置 SAFETY



故障/BREAK DOWN

故障的原因與排除 BREAK DOWN FAQ

- 不良的B. B彈是造成卡彈的原因，請使用品質優良的KWC B. B彈。
Bad quality BB is the main reason to cause BB jam. Please use the best quality KWC BB to avoid jamming problem.
- 當卡彈時，請儘可能先取出彈匣，再以不傷槍管的軟質細棒(不可大於4.4mm直徑)，從槍口置入清除。
When BB jammed, first please release the magazine from pistol then use a soft stick (diameter no bigger than 4.4mm) to clear up the barrel.
- 空擊發易造成零件損耗，請避免此動作。
Please avoid dry firing, for it could cause parts deformed or damage.
- 當扣引扳機時，此時B. B彈即同時在上膛階段，不可扣引一半時又回復，因為如此的動作，將有可能上膛兩發B. B彈。
Pulling trigger will load BB in the barrel. Therefore, please do not pull the trigger half way and release the trigger. This action could load 2 BBs in the pistol and cause jamming.
- 使用一段時間後，請再次用中性砂油脂潤滑撞針及扳機軸心。
Please spray the lubricant into firing pin and trigger pin.



WARNING 請務必嚴格遵守 使用說明指導書 READ THIS OWNER'S MANUAL COMPLETELY.

此低動能遊戲用槍是針對喜愛射擊運動的消費者所開發。避免因使用方法不正確或改造所發生的故障或事故，請務必詳讀說明書，正確的操作享受愉快的射擊運動。

- 除了發射時外，不要將手指頭掛在扳機上。
- 選擇安全與適當標靶
- 在非使用期間，請保持保險關閉且退彈的狀態，就算在非使用狀態，也要如同其已裝彈。
- 如任何的機械產品，槍的保險也可能失效。即使在保險關閉的狀態下也請小心的操作此槍，請勿將槍口對人。
- 千萬不要對堅硬或平坦表面、水面射擊，以避免跳彈。
- 請妥善保管產品在未成年孩童無法伸手取得的場所。
- 每次使用前後都應該檢查擋彈物，假如擋彈物表面有磨損失效或是反彈時請停止使用。
- 請使用高品質BB彈，請勿使用①口徑大於4.4mm ②表面不平滑的③重複使用過的BB彈④非本說明書指定的發射物。
- 最高的使用及儲藏CO2小鋼瓶環境為50°C(122°F)以內，高溫可能會造成CO2小鋼瓶過熱甚至爆炸。
- 檢查任何掉落的槍枝，以確保未影響其功能。

This airgun is intended for recreational or training purposes. To prevent improper handling, modification or alteration causing malfunction or accident, please read the owner's manual carefully. Enjoy the pleasant shooting experience by proper operation.

- Do not put your finger on the trigger except shooting.
- Please choose safe and proper target.
- Please always keep the airgun on safe and unloaded when not using.
- Like all mechanical devices, an airgun safety can fail. Always handle the airgun safely even when the safety is "on safe". Never point the airgun at any people.
- Avoid ricochet. Never shoot at a hard or flat surface or at water.
- Keep the airgun out of reach for small children.
- Your backstop should be inspected for wear before and after each use. Discontinue use of the backstop if surface shows signs of failure or ricochet.
- Only use high quality 4.5mm steel BBs. Never use ①BB diameter larger than 4.4 mm ②BB with unsmoothed surface ③reused BB that has been fired ④incorrect projectiles not design for this airgun
- Do not expose CO2 cartridges to heat or store them at temperatures above 50°C(122°F). CO2 cartridges may over heat or explode at temperatures above 50°C(122°F).
- Check any gun that has been dropped to ensure that its function has not been affected.

WARNING 注意事項

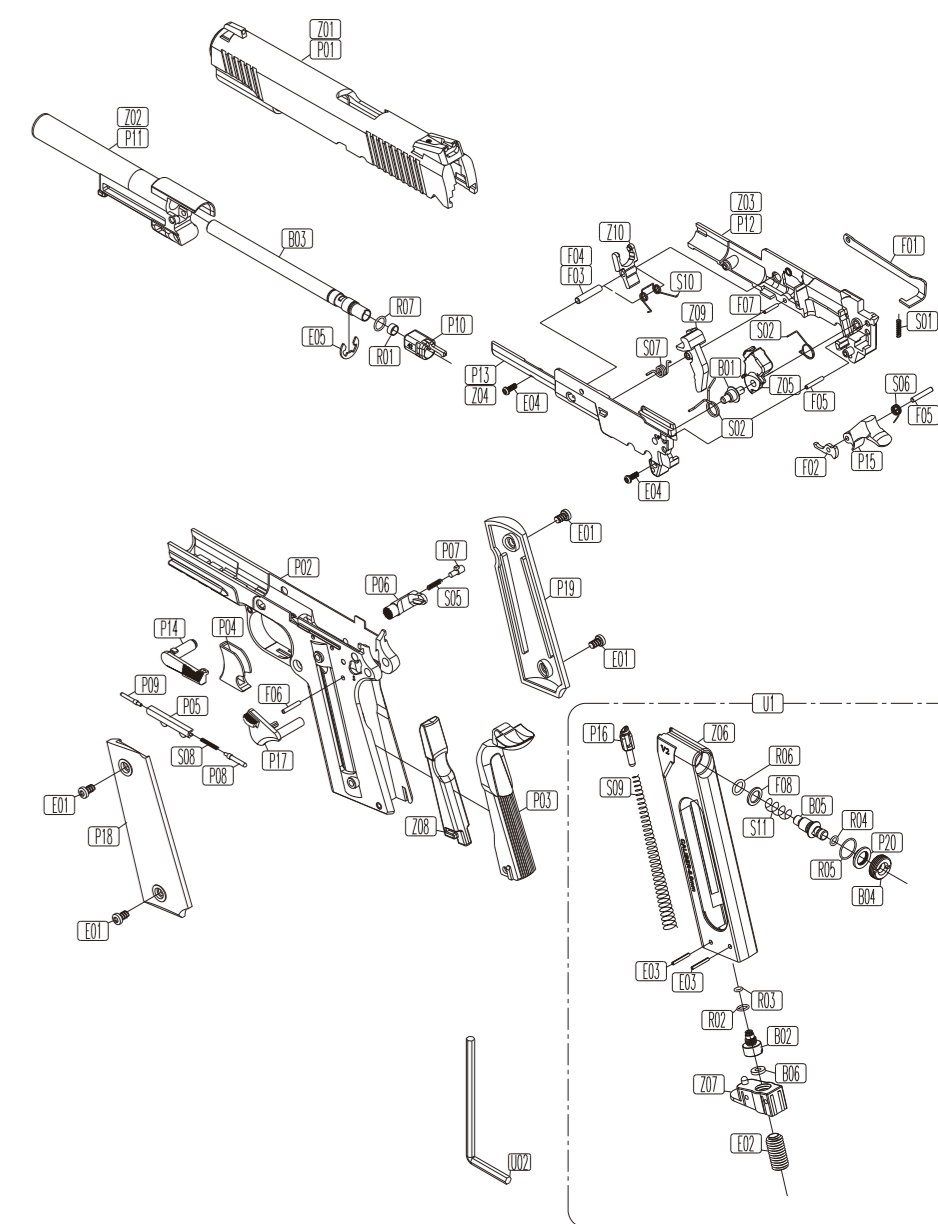
- ★使用低動能遊戲用槍前，請務必戴上保護眼鏡或面罩。
★Always wear eye protection when using airsoft.
- ★使用低動能遊戲用槍前，請務必詳讀說明書內容。
★Read the owner's manual before using the airsoft.
- ★請不要在公開場合使用低動能遊戲用槍，也請不要拿低動能遊戲用槍對準人或動物。
★Never brandish or aiming this airsoft at any people or domestic animals. Brandish this airsoft in public is dangerous and may be a crime.
- ★請確認後再發射BB彈方向，附近無人或動物存在。
★Always be aware of your surrounding before and during shooting and select a safe area for target practice.
- ★不可攜帶低動能遊戲用槍在公共場所行走，請務必裝在袋子或盒子內。
★Always transport an airsoft in a locked carrying case. Make sure it is unloaded and on safe.
- ★請不要由槍口向內探視。
★To Avoid accidental discharge, do not look directly into the barrel.
- ★不可任意改造或加工低動能遊戲用槍，私自改造加工會造成產品損壞、保固失效，導致使用上不安全，甚至觸法送刑。
★Disassemble, modify, or alter of your airsoft may cause malfunction, void your warranty and may make it unsafe to use.

Do not display this pistol in public—it may confuse people and may be a crime. 請不要忘了，雖然自己知道這只是玩具，但不知道的人，會以為這是真槍。

KM-40 系列 零件表 KM-40 SERIES PARTS LIST

圖號	零件名稱	UNIT	圖號	零件名稱	UNIT
P01	上蓋(ABS)	SLIDE(ABS)	B05	心棒	VALVE
P02	本體	FRAME	B06	氣瓶頂針迫緊(TEFLON)	CARTRIDGE STAB NEEDLE PACKING(TEFLON)
P03	握柄	GRIP	E01	槍柄螺絲	GRIP SCREW
P04	扳機	TRIGGER	E02	止付螺絲M10x20黑	Socket screw M10x20
P05	保險卡筭導件	PLUNGER GUIDE	E03	彈簧梢	SPRING PIN
P06	彈匣卡筭	MAGAZINE CATCH	E04	擊鐵箱螺絲	HAMMER CASE SCREW
P07	彈匣卡筭配件	MAGAZINE CATCH JOINT	E05	E型扣環	E BUCKLE
P08	保險定位軸	SAFETY PLUNGER	F01	扳機連桿	TRIGGER BAR
P09	上蓋止動片軸	SLIDE STOP SLEEVE	F02	保險釋放件	SAFETY DISCHARGE NOSE
P10	槍管導管(ABS)	OUTER BARREL(ABS)	F03	扳機連動件軸	TRIGGER CONNECTOR PIN
P11	擊鐵箱右(ABS)	BARREL TOW R(ABS)	F04	YA-3軸(扳機連動件軸)	YA-3 PIN (TRIGGER CONNECTOR PIN)
P12	擊鐵箱左(ABS)	BARREL TOW L(ABS)	F05	軸(擊鐵、擊鐵箱)	HAMMER CASE PIN
P13	上蓋止動片	SLIDE STOP	F06	軸(本體箱)	FRAME PIN
P14	擊鐵	HAMMER	F07	軸(扳機)	TRIGGER PIN
P15	保險左	SAFETY L	F08	心棒壓簧墊圈	VALVE SPRING GASKET
P16	彈匣滑粒	MAGAZINE FOLLOWER	S01	扳機連桿壓簧	TRIGGER BAR SPRING
P17	內槍管導引件	INNER BARREL GUIDE	S02	撞針緩衝扭簧	FIRING PIN BUFFER SPRING
P18	槍柄右	GRIP R	S03	撞針扭簧	FIRING PIN SPRING
P19	槍柄左	GRIP L	S05	彈匣卡筭壓簧	MAGAZINE CATCH SPRING
P20	KG-01 心棒蓋迫緊(入口剪剪)	VALVE PACKING	S06	擊鐵扭簧	HAMMER SPRING
Z01	上蓋(鋅合金)	SLIDE(ZINC ALLOY)	S07	扳機配件扭簧	TRIGGER SPRING
Z02	槍管導管(鋅合金)	OUTER BARREL(ZINC ALLOY)	S08	保險定位軸壓簧	PLUNGER GUIDE SPRING
Z03	擊鐵箱右(鋅合金)	BARREL TOW R(ZINC ALLOY)	S09	彈匣壓簧	MAGAZINE SPRING
Z04	擊鐵箱左(鋅合金)	BARREL TOW L(ZINC ALLOY)	S10	扳機連動件扭簧	TRIGGER TOW SPRING
Z05	撞針	FIRING PIN	S11	心棒壓簧	VALVE SPRING
Z06	彈匣	MAGAZINE	R01	子彈迫緊	RUBBER CHAMBER
Z07	彈匣底座	MAGAZINE BASE	R02	O形環 1x5	O-ring
Z08	握柄配重	REAR GRIP WEIGHT	R03	O形環 1X3	O-ring
Z09	扳機配件	TRIGGER (REAR)	R04	O形環 1x4	O-ring
Z10	槍管連動件	BARREL TOW	R05	O形環 0.8x11.3	O-ring
Z11	扳機連動件	TRIGGER TOW	R06	O形環 1.45x6.9	O-ring
B01	撞針軸	FIRING PIN	U02	六角板手	HEXAGONAL WRENCH
B02	KG-42X 氣瓶頂針(新規)	KG-42X CARTRIDGE STAB NEEDLE (NEW)			
B03	槍管	BARREL			
B04	心棒蓋	VALVE CAP			

KM-40 系列 零件分解圖 KM-40 SERIES EXPLORED VIEW



※零件有時為了改良而不經預告變更。
Spare parts may be modified for quality improvement And such modification may be without advance notice.