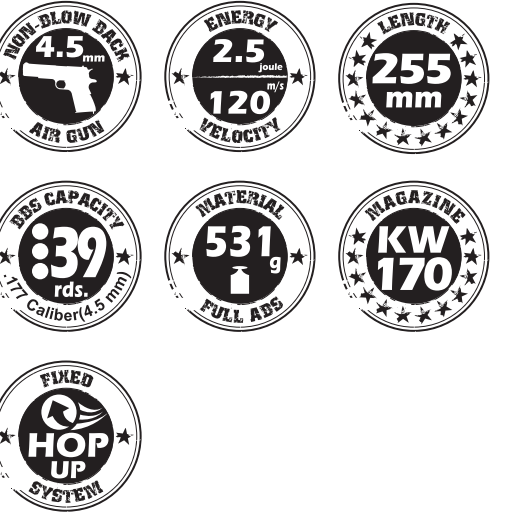




MODEL KM-55 系說明書

MODEL KM-55 INSTRUCTION MANUAL

KWC KIWEN WELL TOY INDUSTRIAL CO., LTD.
www.kwcgun.com
台南市東區自由路2段209巷5號
NO.5, LANE 209, SEC. 2,
ZIH YOU RD., EAST DISTRICT
70157, TAINAN, TAIWAN
TEL:+886-6-269-1815
sales@kwcgun.com
www.kwcgun.com

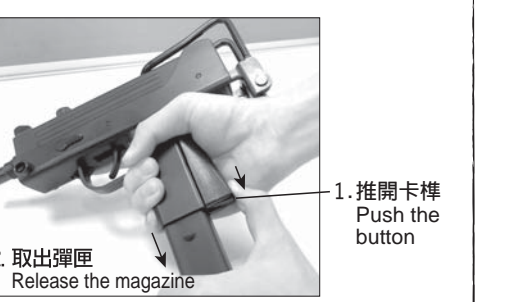


操作/OPERATION

操作說明

OPERATION

1. 取出彈匣
RELEASE MAGAZINE

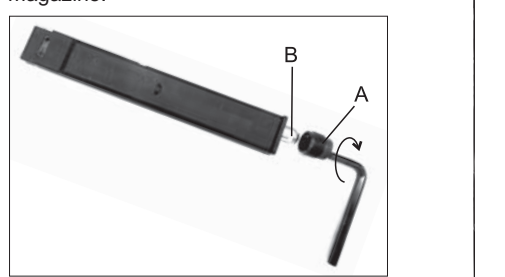


▲注意：請勿使彈匣直接掉落地面，以防止變形或損壞。

▲CAUTION: Magazine falling directly on the ground could cause deform or damage on it. Please be aware.

2. CO2小鋼瓶12g的使用
INSTALLING 12G CO2 CARTRIDGE

逆時針轉出彈匣底內件後，置入小鋼瓶B，再以順時針方向鎖緊彈匣底內件A。當刺破鋼瓶出氣時，請快速鎖緊。
Turn the magazine cap out counter-clockwise and place CO2 cartridge B inside the magazine. Rapidly turn the screw A clockwise when piercing the cartridge in the magazine.



▲注意：為維護彈匣使用壽命，請盡可能不要殘留CO2氣體於彈匣內。

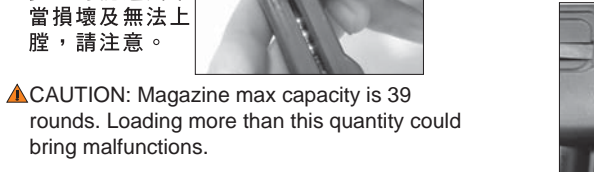
▲CAUTION: To protect your magazine, please release all of the CO2 out of the magazine after every use.

故障/BREAK DOWN

故障的原因與排除

BREAK DOWN FAQ

- * 卡彈可能原因：
the reason for BB jam :
a. 裝彈排列不整齊
the BB in the magazine does not arrange very well.
b. 不良B. B彈
bad quality BB



▲注意：彈匣最多可裝39發B. B彈，如強行裝入更多，可能造成不當損壞及無法上膛，請注意。

▲CAUTION: Magazine max capacity is 39 rounds. Loading more than this quantity could bring malfunctions.

射擊

SHOOTING

1. 將裝好BB彈的彈匣插入槍身往上推入，直到彈匣卡筴發出“卡嗒”為止。
Insert fully loaded magazine in the airgun until you hear the sound of “CLICK”.



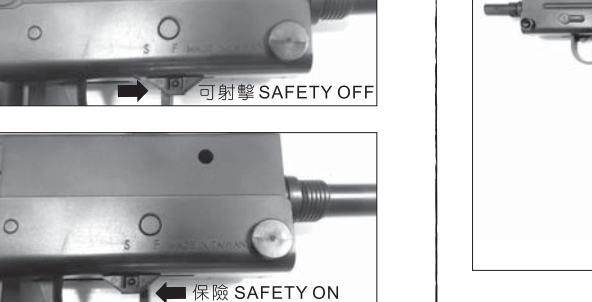
2. 瞄準目標物扣引扳機，即可擊發。
Aim the target and pull the trigger.



拆解/DIS-ASSEMBLY

拆解/DIS-ASSEMBLY

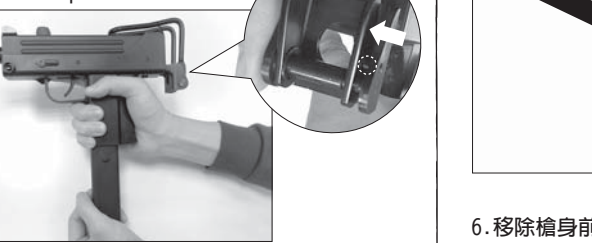
1. 拆解前卸下彈匣
Remove the magazine before disassemble.
2. 再將槍托如圖所示，先往左壓住推開，讓卡榫脫離孔洞
Press stock to release the catch as picture.



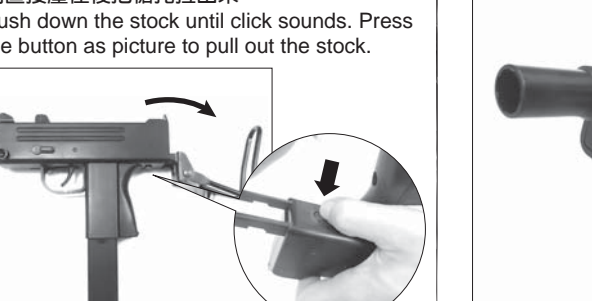
▲注意：此時並非故障，只需重新上膛便可繼續使用。
Solution: This is not a failure. Just reload and operate again.

* 保養及維護
MAINTENANCE GUIDE

當射擊約2000發時，建議你如圖所示，以砂油脂適當在上蓋與本體滑動接觸面及擊鐵、撞針作動處潤滑，以利滑動。
After every 2,000 BB shots, lubricating the Firing pin and Track as pictures below is recommended.



3. 槍托扳開往下，在槍尾端下面有顆拉桿按鈕，請直接壓住後把槍托拉出來
Push down the stock until click sounds. Press the button as picture to pull out the stock.



故障/BREAK DOWN

故障的原因與排除

BREAK DOWN FAQ

- * 卡彈可能原因：
the reason for BB jam :
a. 裝彈排列不整齊
the BB in the magazine does not arrange very well.
b. 不良B. B彈
bad quality BB



▲注意：彈匣最多可裝39發B. B彈，如強行裝入更多，可能造成不當損壞及無法上膛，請注意。

▲CAUTION: Magazine max capacity is 39 rounds. Loading more than this quantity could bring malfunctions.

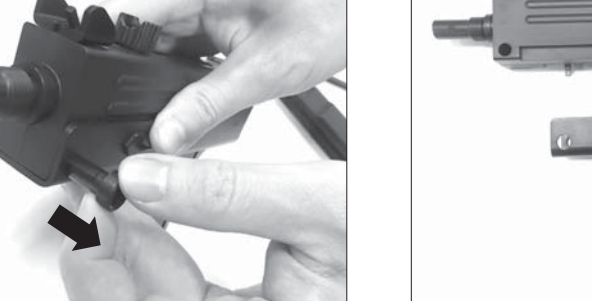
射擊

SHOOTING

1. 將裝好BB彈的彈匣插入槍身往上推入，直到彈匣卡筴發出“卡嗒”為止。
Insert fully loaded magazine in the airgun until you hear the sound of “CLICK”.



2. 瞄準目標物扣引扳機，即可擊發。
Aim the target and pull the trigger.



故障/BREAK DOWN

故障的原因與排除

BREAK DOWN FAQ

- * 卡彈可能原因：
the reason for BB jam :
a. 裝彈排列不整齊
the BB in the magazine does not arrange very well.
b. 不良B. B彈
bad quality BB



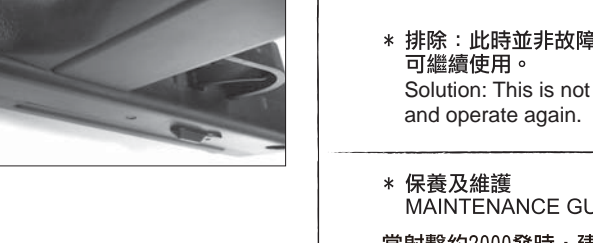
▲注意：彈匣最多可裝39發B. B彈，如強行裝入更多，可能造成不當損壞及無法上膛，請注意。

▲CAUTION: Magazine max capacity is 39 rounds. Loading more than this quantity could bring malfunctions.

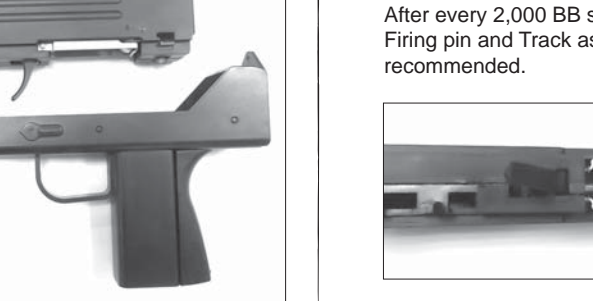
射擊

SHOOTING

1. 將裝好BB彈的彈匣插入槍身往上推入，直到彈匣卡筴發出“卡嗒”為止。
Insert fully loaded magazine in the airgun until you hear the sound of “CLICK”.



2. 瞄準目標物扣引扳機，即可擊發。
Aim the target and pull the trigger.



故障/BREAK DOWN

故障的原因與排除

BREAK DOWN FAQ

- * 卡彈可能原因：
the reason for BB jam :
a. 裝彈排列不整齊
the BB in the magazine does not arrange very well.
b. 不良B. B彈
bad quality BB



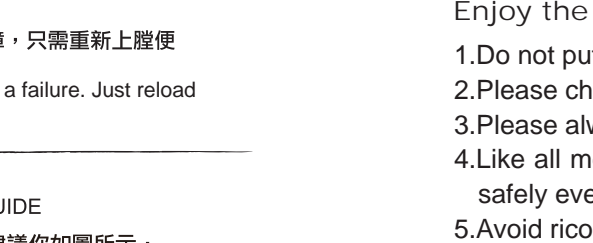
▲注意：彈匣最多可裝39發B. B彈，如強行裝入更多，可能造成不當損壞及無法上膛，請注意。

▲CAUTION: Magazine max capacity is 39 rounds. Loading more than this quantity could bring malfunctions.

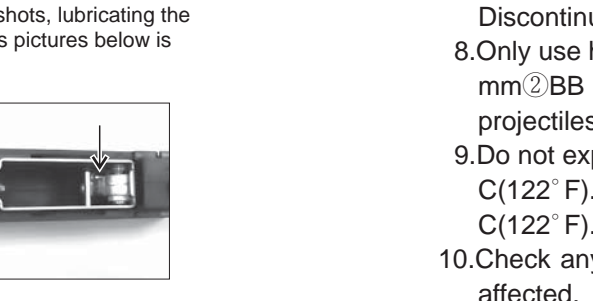
射擊

SHOOTING

1. 將裝好BB彈的彈匣插入槍身往上推入，直到彈匣卡筴發出“卡嗒”為止。
Insert fully loaded magazine in the airgun until you hear the sound of “CLICK”.



2. 瞄準目標物扣引扳機，即可擊發。
Aim the target and pull the trigger.

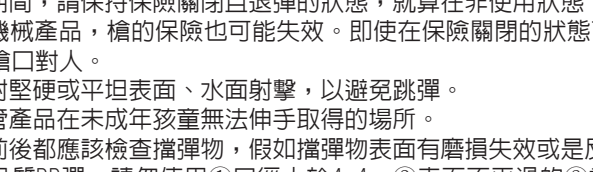


故障/BREAK DOWN

故障的原因與排除

BREAK DOWN FAQ

- * 卡彈可能原因：
the reason for BB jam :
a. 裝彈排列不整齊
the BB in the magazine does not arrange very well.
b. 不良B. B彈
bad quality BB



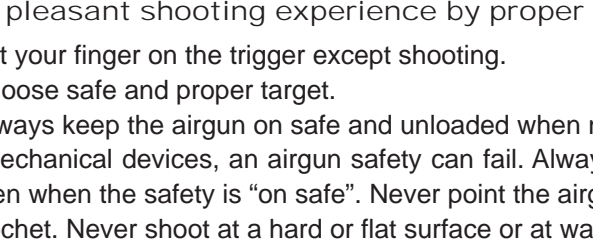
▲注意：彈匣最多可裝39發B. B彈，如強行裝入更多，可能造成不當損壞及無法上膛，請注意。

▲CAUTION: Magazine max capacity is 39 rounds. Loading more than this quantity could bring malfunctions.

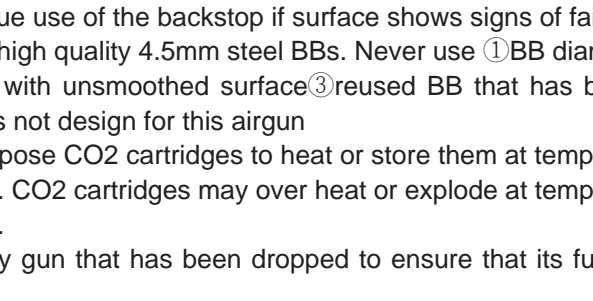
射擊

SHOOTING

1. 將裝好BB彈的彈匣插入槍身往上推入，直到彈匣卡筴發出“卡嗒”為止。
Insert fully loaded magazine in the airgun until you hear the sound of “CLICK”.



2. 瞄準目標物扣引扳機，即可擊發。
Aim the target and pull the trigger.

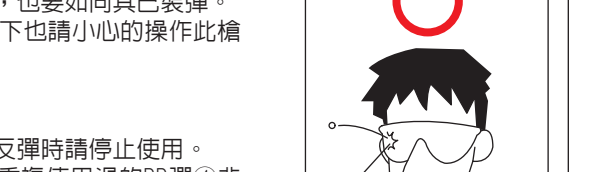


故障/BREAK DOWN

故障的原因與排除

BREAK DOWN FAQ

- * 卡彈可能原因：
the reason for BB jam :
a. 裝彈排列不整齊
the BB in the magazine does not arrange very well.
b. 不良B. B彈
bad quality BB



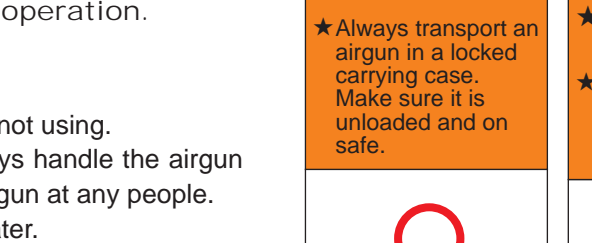
▲注意：彈匣最多可裝39發B. B彈，如強行裝入更多，可能造成不當損壞及無法上膛，請注意。

▲CAUTION: Magazine max capacity is 39 rounds. Loading more than this quantity could bring malfunctions.

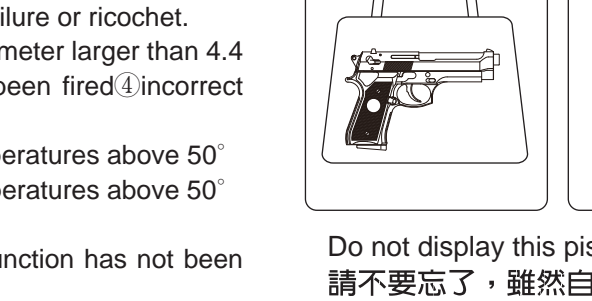
射擊

SHOOTING

1. 將裝好BB彈的彈匣插入槍身往上推入，直到彈匣卡筴發出“卡嗒”為止。
Insert fully loaded magazine in the airgun until you hear the sound of “CLICK”.



2. 瞄準目標物扣引扳機，即可擊發。
Aim the target and pull the trigger.



故障/BREAK DOWN

故障的原因與排除

BREAK DOWN FAQ

- * 卡彈可能原因：
the reason for BB jam :
a. 裝彈排列不整齊
the BB in the magazine does not arrange very well.
b. 不良B. B彈
bad quality BB



▲注意：彈匣最多可裝39發B. B彈，如強行裝入更多，可能造成不當損壞及無法上膛，請注意。

▲CAUTION: Magazine max capacity is 39 rounds. Loading more than this quantity could bring malfunctions.

射擊

SHOOTING

1. 將裝好BB彈的彈匣插入槍身往上推入，直到彈匣卡筴發出“卡嗒”為止。
Insert fully loaded magazine in the airgun until you hear the sound of “CLICK”.



2. 瞄準目標物扣引扳機，即可擊發。
Aim the target and pull the trigger.

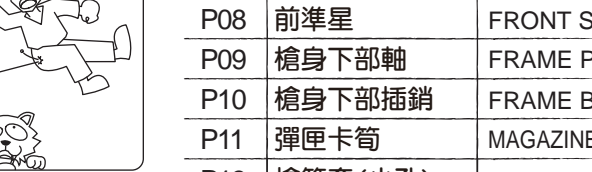


故障/BREAK DOWN

故障的原因與排除

BREAK DOWN FAQ

- * 卡彈可能原因：
the reason for BB jam :
a. 裝彈排列不整齊
the BB in the magazine does not arrange very well.
b. 不良B. B彈
bad quality BB



▲注意：彈匣最多可裝39發B. B彈，如強行裝入更多，可能造成不當損壞及無法上膛，請注意。

▲CAUTION: Magazine max capacity is 39 rounds. Loading more than this quantity could bring malfunctions.

射擊

SHOOTING

1. 將裝好BB彈的彈匣插入槍身往上推入，直到彈匣卡筴發出“卡嗒”為止。
Insert fully loaded magazine in the airgun until you hear the sound of “CLICK”.



2. 瞄準目標物扣引扳機，即可擊發。
Aim the target and pull the trigger.

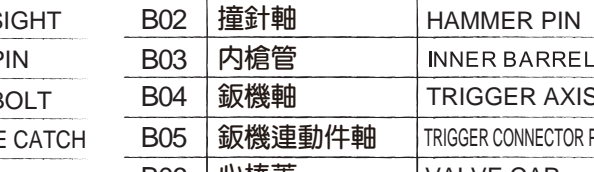


故障/BREAK DOWN

故障的原因與排除

BREAK DOWN FAQ

- * 卡彈可能原因：
the reason for BB jam :
a. 裝彈排列不整齊
the BB in the magazine does not arrange very well.
b. 不良B. B彈
bad quality BB



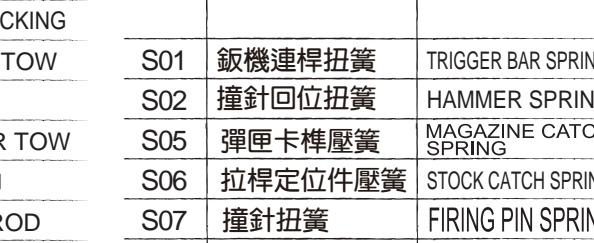
▲注意：彈匣最多可裝39發B. B彈，如強行裝入更多，可能造成不當損壞及無法上膛，請注意。

▲CAUTION: Magazine max capacity is 39 rounds. Loading more than this quantity could bring malfunctions.

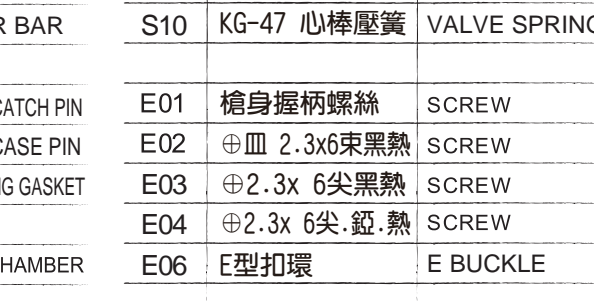
射擊

SHOOTING

1. 將裝好BB彈的彈匣插入槍身往上推入，直到彈匣卡筴發出“卡嗒”為止。
Insert fully loaded magazine in the airgun until you hear the sound of “CLICK”.



2. 瞄準目標物扣引扳機，即可擊發。
Aim the target and pull the trigger.



故障/BREAK DOWN

故障的原因與排除

BREAK DOWN FAQ

- * 卡彈可能原因：
the reason for BB jam :
a. 裝彈排列不整齊
the BB in the magazine does not arrange very well.
b. 不良B. B彈
bad quality BB



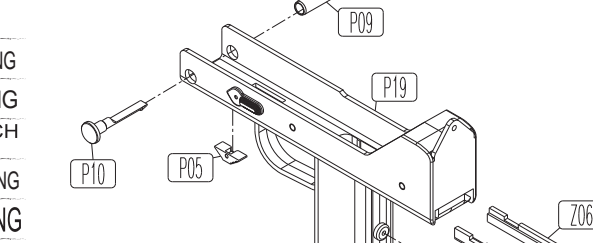
▲注意：彈匣最多可裝39發B. B彈，如強行裝入更多，可能造成不當損壞及無法上膛，請注意。

▲CAUTION: Magazine max capacity is 39 rounds. Loading more than this quantity could bring malfunctions.

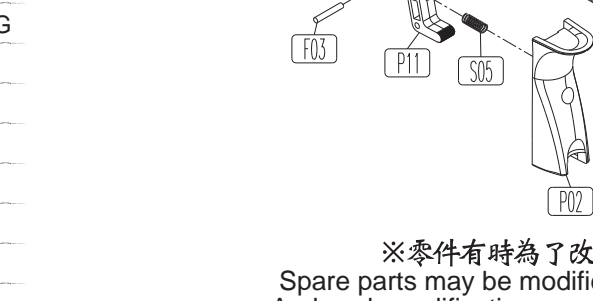
射擊

SHOOTING

1. 將裝好BB彈的彈匣插入槍身往上推入，直到彈匣卡筴發出“卡嗒”為止。
Insert fully loaded magazine in the airgun until you hear the sound of “CLICK”.



2. 瞄準目標物扣引扳機，即可擊發。
Aim the target and pull the trigger.

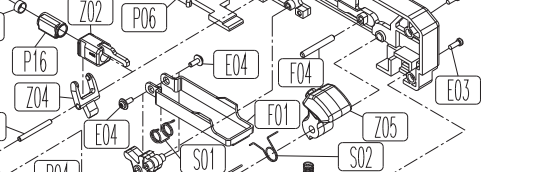


故障/BREAK DOWN

故障的原因與排除

BREAK DOWN FAQ

- * 卡彈可能原因：
the reason for BB jam :
a. 裝彈排列不整齊
the BB in the magazine does not arrange very well.
b. 不良B. B彈
bad quality BB



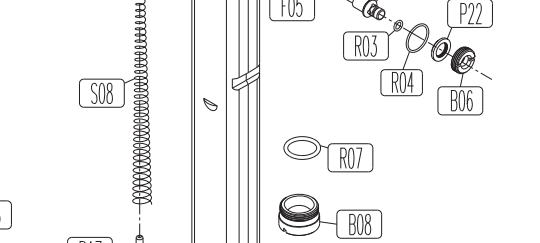
▲注意：彈匣最多可裝39發B. B彈，如強行裝入更多，可能造成不當損壞及無法上膛，請注意。

▲CAUTION: Magazine max capacity is 39 rounds. Loading more than this quantity could bring malfunctions.

射擊

SHOOTING

1. 將裝好BB彈的彈匣插入槍身往上推入，直到彈匣卡筴發出“卡嗒”為止。
Insert fully loaded magazine in the airgun until you hear the sound of “CLICK”.



2. 瞄準目標物扣引扳機，即可擊發。
Aim the target and pull the trigger.

