


**TOSHIBA**  
Leading Innovation >>>

A decorative graphic consisting of a series of overlapping, semi-transparent circles and a bright light source on the left, creating a lens flare effect that extends horizontally across the middle of the page.

**Newio XG**  
PREMIUM COMPACT ULTRASOUND

*DIAGNOSE WITH SPEED - DECIDE WITH CONFIDENCE*





Nemio™ XG, the next generation in premium compact ultrasound, is designed to help you get the information you need to make the right decisions quickly and with ease.

Outstanding image quality, streamlined workflow and a wide range of clinically validated high-performance features give you the power to carry out your exams with more safety and efficiency.

At the moment of truth you can decide with confidence – and store, report, print and archive your findings conveniently on the system.



Nemio XG offers premium performance backed by unique, clinically validated technologies for a fast and secure diagnosis.

Its fully digital architecture provides outstanding image quality with superb resolution and excellent sensitivity. A wide range of advanced clinical applications further expands your diagnostic capabilities.

Nemio XG - a small package that delivers big performance.



# TAKE A LOOK AT WHAT INNOVATION CAN DO FOR YOU



A complete range of broadband, multifrequency transducers fit a wide variety of clinical settings. Proprietary chip-in-the-tip technology optimizes the signal-to-noise ratio to provide superb image quality and Doppler sensitivity.

Advanced Dynamic Flow™ adds superior resolution to Color Doppler and depicts even tiny vessels or flow around plaques with outstanding accuracy and detail.

ApliPure™ delivers images of excellent resolution and superior penetration while preserving all clinically significant markers.

Panoramic View\* reconstructs a single wide-view frame from continuous images to improve visualization of widespread regions and anatomical relationships.

3D/4D Imaging creates volumes and surface renderings of structures such as the fetal face. MPR provides three orthogonal scan planes simultaneously.

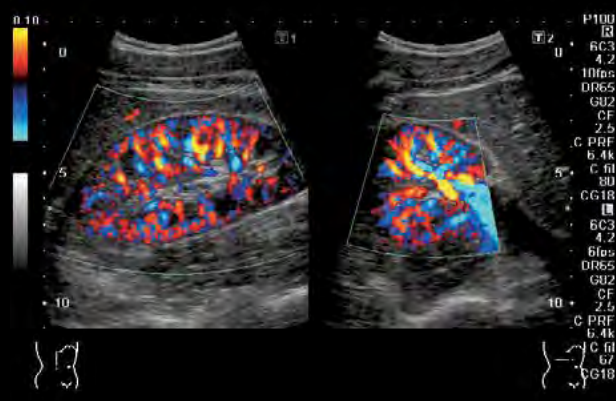


Tissue Doppler Imaging and Stress Echo are valuable tools for an in-depth investigation of cardiac function.

# BECAUSE ONLY SEEING IS BELIEVING



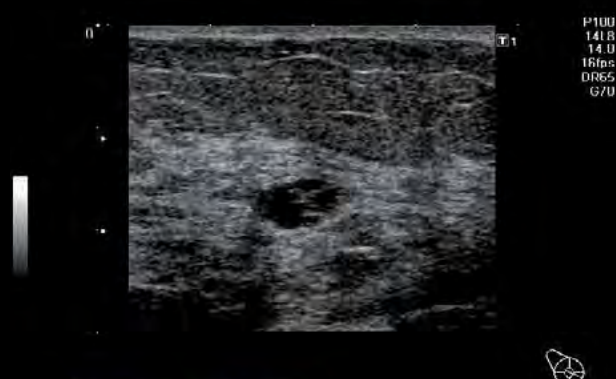
**Pancreas:** Imaging at 6 MHz provides excellent spatial resolution and clear delineation of the pancreatic head.



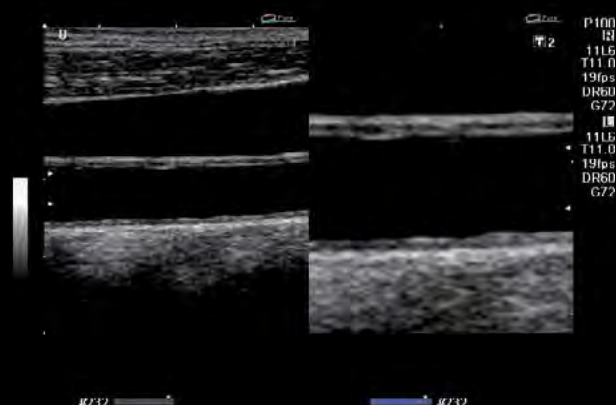
**Native kidney:** Normal perfusion can be imaged with outstanding sensitivity using Directional Color Angio.



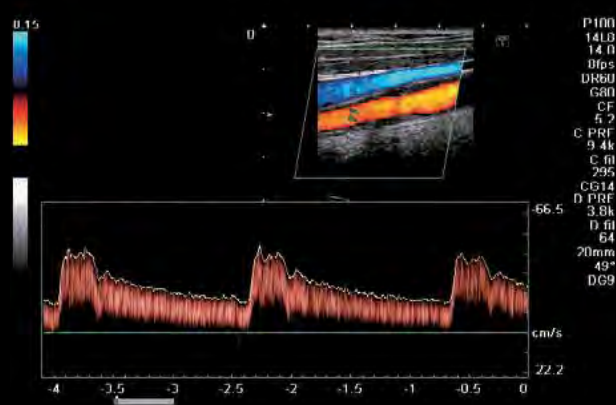
**Aorta, celiac trunk, and SMA:** Tissue Harmonic Imaging and QuickScan provide optimal image quality instantaneously.



**Mammal cyst:** Depicted with high resolution and fine detail using a 14 MHz transducer.



**CCA with slightly irregular intimal layer:** Freeze zoom and ApliPure maintain excellent resolution to allow in-depth assessment.



**ICA soft plaque:** The normal Doppler spectrum confirms that there are no hemodynamic effects due to the reduced lumen.

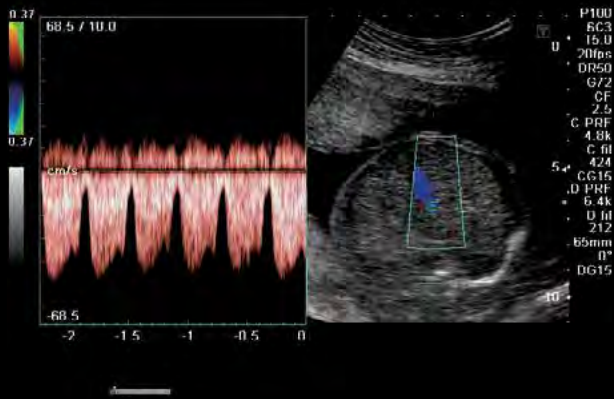




**Pericallosal artery in 3rd trimester of pregnancy:** Advanced Dynamic Flow depicts flow with outstanding resolution and sensitivity.



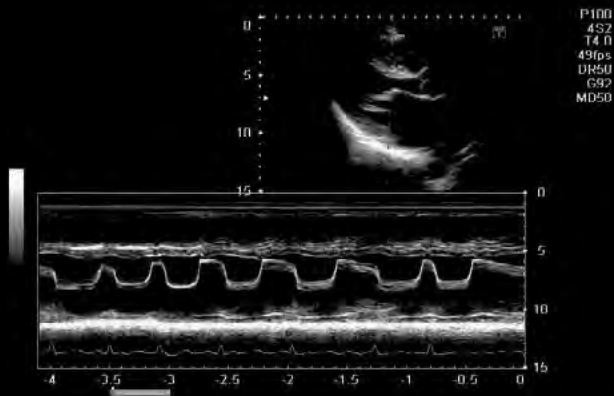
**Fetal Face:** Surface rendering on volumes acquired with 4D transducer produces detailed 3D images quickly and easily.



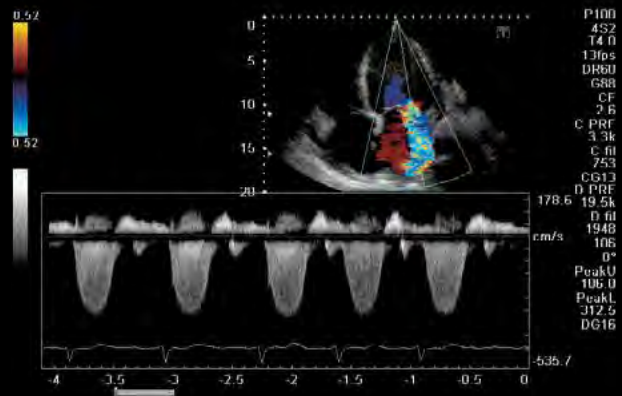
**Ductus venosus:** Color Doppler permits the sample volume to be placed quickly and precisely in this 22-week pregnancy.



**Fetal renal flow:** Advanced Dynamic Flow shows flow in the renal arteries, aorta, and bifurcation with unparalleled resolution.



**Mitral stenosis:** Tissue Harmonic Imaging provides superb resolution and detail in both 2D and M-mode images.



**Mitral regurgitation:** XBT transducer technology offers exceptional sensitivity as demonstrated in the CW Doppler trace.

Nemio XG combines ultra-fast operation with push-button simplicity. It is very compact and mobile, boots up in just seconds, and fits perfectly the way you work.

Its fully programmable user interface responds flexibly to your preferences and clinical needs to help you streamline your workflow.

Finally – a system that adapts to your needs, and not the other way around.





# BOOST YOUR PRODUCTIVITY AND ACCOMPLISH MORE



The 15" high resolution LCD screen with flexible arm and convenient handle provides state of the art display technology combined with outstanding ergonomics.



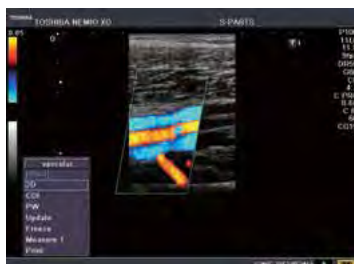
QuickScan optimizes the image quality at the touch of a button. This reduces scan time and improves the consistency and quality of exams.



Nemio XG stores clinical data to hard disk, DVD, USB or network drives in both DICOM or PC compatible formats to integrate seamlessly into any clinical environment.



The convenient on-board reporting function with user-definable templates lets you document your findings immediately, directly on the system.



SonoSet™ lets you carry out routine exams by executing freely programmable protocols simply with the touch of a button. SonoSet also combines multiple operations into a single keystroke. This unique tool can make standard scans easier and a lot faster.

The Toshiba promise is simple: we make the extra effort to provide you with solutions that are efficient and versatile. We are reliable partners in helping you drive down costs while improving the quality of patient care.



# SETTLE ONLY FOR THE BEST

Our comprehensive service network offers professional support and a range of service contracts to help you maximize performance and control expenses.

We take a hands-on approach to education so that you will always get the best from Toshiba technology.

As with all our products, Nemio XG is designed and manufactured to meet the highest standards of reliability and environment at friendliness.



***Toshiba – a partner you can rely on. Always.***



# GLOBAL INNOVATION BY DESIGN

For over 130 years Toshiba's research and development has improved the health and welfare of people around the world.

Today, Toshiba Medical Systems offers a full range of diagnostic imaging products and is a reliable service partner in more than 110 countries.

In accordance with our **Made for Life** commitment we will continue to develop innovations that improve patient care and provide lasting quality for a lifetime of value.



## TOSHIBA MEDICAL SYSTEMS CORPORATION

<http://www.toshibamedicalsystems.com>

©Toshiba Medical Systems Corporation 2006-2008 all rights reserved.

Design and specifications subject to change without notice.

Model number: SSA-580A MCAUS0164EAA 2008-7 TME/TMSC/D

Toshiba Medical Systems Corporation meets internationally recognized standards for Quality Management System ISO 9001, ISO 13485.

Toshiba Medical Systems Corporation Nasu Operations meets the Environmental Management System standard, ISO 14001.

Made for Life, Nemio, iStyle, Sonoset, Dynamic Flow and ApliPur are trademarks of Toshiba Medical Systems Corporation.

Printed in Japan

NemioXG