

Beaulieu Flooring Solutions

The finest flooring under one roof

Professional, flexible, reliable.
Beaulieu Flooring Solutions is the
leading partner for all your flooring
projects, both residential and
commercial.

Beaulieu
International
Group





Combined strength in wall-to-wall flooring

Beaulieu Flooring Solutions is the European leader in wall-to-wall flooring. Our principal strengths are an extensive product range, excellent value for money, continuous innovation as well as dedicated and flexible professional service, all backed up with guaranteed support from the Beaulieu International Group.

As the leading flooring manufacturer, Beaulieu Flooring Solutions offers a wide range of innovative designs, colours, finishes and sizes. We have developed high-tech solutions to meet specific demands, such as floors that offer complete moisture resistance, or which are anti-allergenic or exceptionally durable.

In addition to our standard products, we also offer customised solutions to match our customers' needs perfectly. No wonder that our integrated approach has been used in such huge projects as Heathrow Airport, Volkswagen showrooms, the Shanghai World Expo 2010 and in Novotels around the world.

As market leader, we respond proactively to new developments by continuously improving our production processes, products and services. And to help protect the future, we are also committed to sustainable development by ensuring that we recycle water, use green energy and recyclable materials.





The power of the Beaulieu International Group

Beaulieu International Group is a renowned international group with headquarters in Belgium. Today this industrial group holds a solid market position both in producing raw materials and intermediate goods and in offering an extensive range of perfectly finished floorcoverings.

Beaulieu International Group is composed of three business units. You will be introduced to one of them, 'Flooring Solutions', in this brochure. A second business unit, 'Granules', produces polypropylene granules for numerous applications. And the third business unit, 'Engineered Products' houses the activities 'Fibres', 'Yarns', 'Technical Textiles' and 'Technical Sheets'.

Beaulieu International Group has 3,500 employees in 26 plants and 9 sales offices spread across 13 countries. In 2012, the Beaulieu International Group's turnover was € 1.4 billion.

The Beaulieu International Group's entrepreneurial spirit and innovative ambitions make it the model of diversity and evolution within the sector. They allow it to create added value sustainably for customers, employees, suppliers, shareholders and for the society in which it operates.

Explore this brochure to find out what we can bring to your flooring projects as a partner >>



Beaulieu Flooring Solutions

Six good reasons to choose Beaulieu Flooring Solutions

One-stop shop

Our product choice is as deep as it is wide-ranging. We can help you to choose products based on the appearance, durability, innovation and budget you want. These products are then combined into the best solution for you and your customers.

Advice from experienced specialists

Everyone at Beaulieu Flooring Solutions has years of experience and comprehensive expertise in flooring. Working with you, they'll find the right flooring solution for your needs. What's more, Beaulieu Flooring Solutions has the advantage of combining its research, customer service and project management with multi-product advice, both for distributors and for specific projects.

Excellence covered by people

We aim to achieve integrated sustainability. That happens naturally in our production processes because we actively pursue recyclability and the efficient use of energy and raw materials. Furthermore, our approach is based on respect and integrity. Our team of employees plays a crucial role in our group's success.

Focus on innovation

At Beaulieu Flooring Solutions, we are leaders in pioneering innovations. We achieve this because innovation is an integral part of our processes. This involves not only working on new products, but also on improving our partnerships and production efficiency.

High level of service

We're at your side during every phase, from advice to delivery and after-sales service. In order to meet and exceed your expectations, we work constantly to improve our transparency, quality and customer management. We also provide fast and precise deliveries at home or abroad, even for very large volumes.

Strong partner

Thanks to the strength and scale of the Beaulieu International Group, we can see each project through to a successful conclusion, no matter its size.



Carpet

IDEAL
CREATIVE FLOORING

CARUS
COMMERCIAL FLOORING

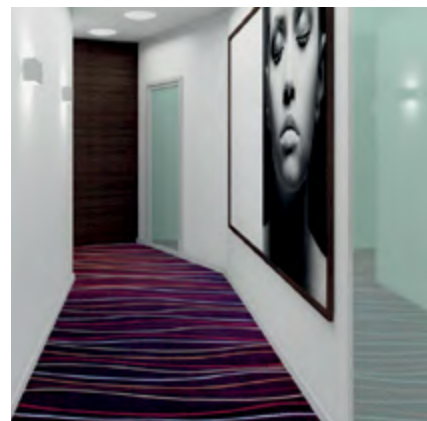
Residential and commercial wall-to-wall carpet



Domestic: colours for every mood and every interior



Office: very good resistance to wear and tear, and flattening



Hospitality: lifts every interior to a higher level

Beaulieu Flooring Solutions offers a wide range of high quality wall-to-wall tufted carpets. Our residential carpets are sold under the Ideal® brand name, and our commercial range is marketed under the Carus® brand name.

www.ideal-bintg.com

Why do our customers choose our carpet solutions?

- **Strength** - our carpets are made from sturdy and durable yarns: polypropylene, polyamide, polyester and solution dyed nylon
- **Innovative** - we use the latest production and yarn technologies, designs and colours
- **Sound insulation** - the acoustics of any room is improved because sounds are absorbed
- **Top brands** - our brands are market leaders in Europe
- **Certification** - our quality and environmental management systems are ISO 9001 and 14001 certified

Needle felt

REAL orotex 

Rolls and Cut to Size

Under the Real and Orotex® brands, Beaulieu Flooring Solutions offers you the widest variety of wall-to-wall carpets for residential or commercial purposes.

www.beaulieureal.be

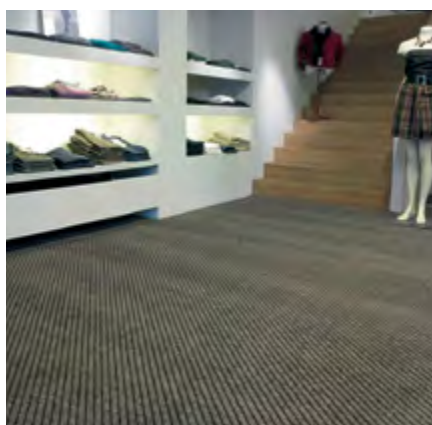
www.orotex.com

Why do our customers choose our needle felt solutions?

- **Wide product offer for a variety of applications** - residential and commercial needle felt, carpet for fairs and exhibitions, artificial grass and automotive carpet in both needle felt and tufted constructions.
- **Durable** - our needle felt and artificial grass carpets are strong and durable, which means they can be used in an endless number of places such as exhibition stands, showrooms, terraces, roundabouts, etc.
- **Easy maintenance** - polypropylene is waterproof and stain-resistant, which means that the carpet is easy to clean
- **Made to measure** - in addition to wall-to-wall needle felt carpet on rolls, exhibition carpet and artificial grass, we offer a variety of derivative products such as artificial grass in cut-lengths, door and car mats, runners, decorative rugs, etc.
- **Just-in-time** - we are renowned for our excellent just-in-time delivery and can easily produce large volumes in a short lead time
- **Environmentally aware** - 'Rewind®' is a new, latex-free carpet concept. The material is recycled, and water and energy use are kept to a minimum during production. We also take needle felt carpets back after temporary use at exhibitions and events, so that we can recycle them for new uses



Guaranteed colourfast under all conditions



Ideal for intensive use



Artificial grass deliverable on rolls and as mats

Vinyl

**BEAU
FLOR®**
we decorate your floor

JUTEKS® 

Cushion vinyl



Quickly installed: ideal for commercial applications



Trendy collections with innovative designs



5 metre wide cushion vinyl for seamless installation

Beaulieu Flooring Solutions is also an expert in vinyl. We can offer you unique products, with a worldwide exclusivity on 5 metre-wide cushion vinyl. We market our cushion vinyl under the Beauflor and Juteks brands.

www.juteks.si
www.beauflor.com

Why do our customers choose our vinyl solutions?

- **Decorative** - our comprehensive collection ranges from contemporary to timeless classic designs. Natural looking woods and tiles design through lacquers, coloration and embossing techniques
- **Tear resistant** - its unique polymer core provides super strength for an excellent resistance to ripping and tearing during both installation and usage
- **Hygienic** - its polyurethane lacquer and ease of maintenance make this the perfect flooring for your home
- **Seamless** - its worldwide exclusive 5-metre width allows a seamless installation in virtually any interior
- **High quality** - all products intended for commercial use carry the 'PRO commercial flooring' quality label
- **Acoustics** - our vinyl absorbs and reduces walking noise
- **Radical improved indoor air quality** - through technological improvements, we've dramatically reduced the level of volatile organic compounds (VOCs)

LVT

**BEAU
FLOR**[®]
we decorate your floor

BERRYALLOC[®]
LAMINATE • PARQUET • WALLS • VINYL PLANKS
WHEREVER. FOREVER.

Luxury Vinyl Tiles

Under the Beauflor[®] and BerryAlloc[®] brands, we offer a wide range of LVT floors, with everything from dryback (Podium[®]), click vinyl planks (PureLoc) to our revolutionary DreamClick[®] collection.

www.berryalloc.com

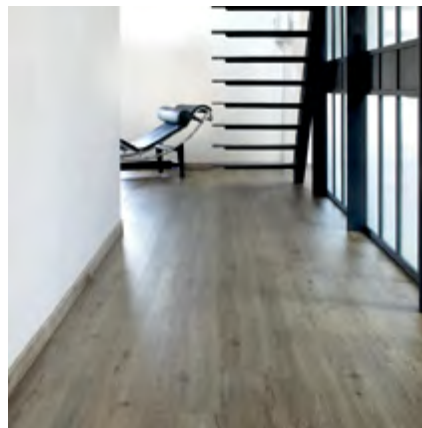
www.beauflor.com

Why do our customers choose our LVT solutions?

- **Silent floors** - our floors absorb and reduce walking noise, a real pleasure to walk on
- **Water resistant** - all our LVT floors are water resistant, suitable for every room, even bathrooms or kitchens
- **Innovative** - our revolutionary DreamClick[®] with its unique 360° click system on all 4 sides, makes it unbeatable for installing
- **Easy installation** - with our click LVT ranges PureLoc and DreamClick[®], you just click the planks together and your floor is ready to use !
- **Durable** - all our LVT floors offer you long-lasting comfort. The superior wear layer protects your floor from daily wear and tear in both residential and commercial environments
- **Hygienic** - its hygienic polyurethane lacquer and ease of maintenance make this the perfect anti-allergenic flooring
- **Decorative** - we offer over a 100 different wood and tile designs in a variety of sizes
- **Eco-friendly** - made of virgin PVC material, our floors are 100% recyclable and have a reduced life-cycle impact of the environment



An ideal fit with floor heating



Vinyl planks of over 2 m long!



The look and feel of a wooden floor

Wood



Parquet and laminate



Water-resistant laminate for every interior



Robust Millennium parquet with a 6 mm thick top layer



The High-Tech LOC® aluminium lock system: rock solid

Under the BerryAlloc® brand name, Beaulieu Flooring Solutions provides a wide range of parquet and laminate flooring in several quality levels.

www.berryalloc.com

Why do customers choose our parquet and laminate floors?

- **Indestructible** - our floors are so strong that we offer a lifetime warranty for residential use
- **Creative** - you can choose from over 18 collections and 200 designs in different wood types and sizes, from very narrow to extra wide, and from standard length to extra long boards of over 2 metres
- **Water-resistant** - the Riviera and Titanium laminate collections are finished with a special HydroPlus® coating for outstanding moisture protection
- **Easy installation** - the unique and innovative Best LOC® and High-Tech LOC® aluminium systems lock together easily and guarantee easy installation and an extremely strong hold
- **Top quality** - all of our floors are at least class 32, some are even class 33 or 34, thanks to their 'high pressure' surface
- **Eco-friendly** - the PEFC and FSC labels also guarantee that BerryAlloc® cares about nature
- **100% made in France** - our parquet floors are made from the finest French oak from the Forest of Tronçais

Beaulieu Flooring Solutions

Carpet

IDEAL
CREATIVE FLOORING

CARUS
COMMERCIAL FLOORING

Needle felt

REAL orotex 

Vinyl

**BEAU
FLOR**[®]
we decorate your floor

JUTEKS 

LVT

**BEAU
FLOR**[®]
we decorate your floor

BERRY≡ALLOC[®]
LAMINATE • PARQUET • WALLS • VINYL PLANKS

Wood

BERRY≡ALLOC[®]
LAMINATE • PARQUET • WALLS • VINYL PLANKS

Interested in Beaulieu Flooring Solutions?

Do you have any questions?
Then please contact your Beaulieu representative or

- e-mail info@beaulieuflooringsolutions.com
- go to www.beaulieuflooringsolutions.com



Beaulieu
International
Group

