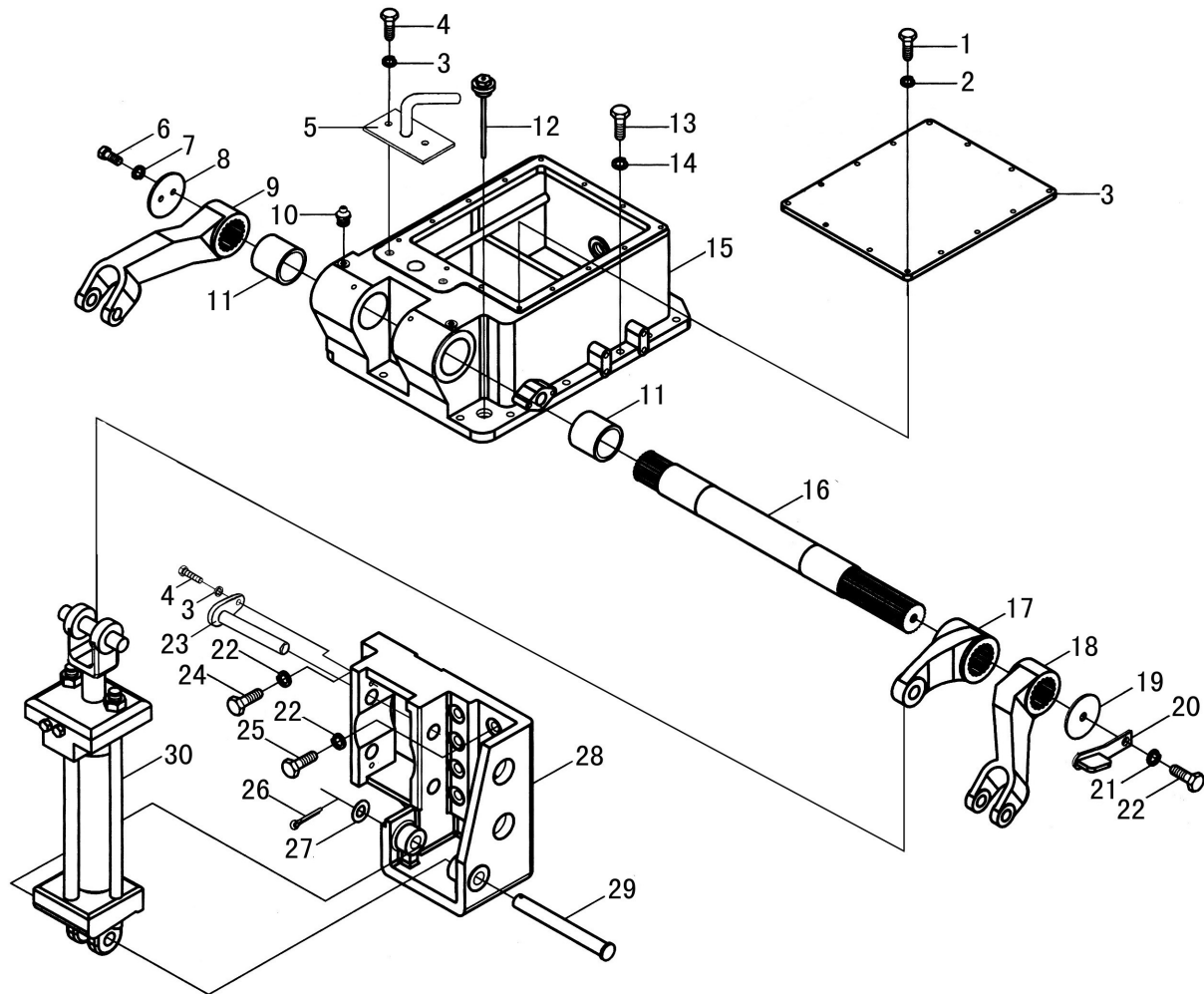


## 提升器总成 (二)

## Lifter Assembly(II)

序号 Ser.No.	代号 Part No.	名称	Name	数量 Qty.										
				650	654	700	704	750	754	800	804	850	854	
23	GB3452.1	O形密封圈12.5×2.65	O-seal ring 12.5×2.65	2	2	2	2	2	2	2	2	2	2	2
24	GB 3452.1	O形密封圈103×3.55	O-seal ring 103×3.55	1	1	1	1	1	1	1	1	1	1	1
25	700.55.164	油缸盖挡圈	Spacer ring ,cylinder cover	1	1	1	1	1	1	1	1	1	1	1
26	GB 3452.1	O形密封圈118×3.55	O-seal ring 108×3.55	1	1	1	1	1	1	1	1	1	1	1
27	700.55.109A	缸筒	Cylinder trunk	1	1	1	1	1	1	1	1	1	1	1
28	GB3452.1	O形密封圈100×5.3	O-seal ring 100×5.3	1	1	1	1	1	1	1	1	1	1	1
29	700.55.165	活塞挡圈	Piston ring	1	1	1	1	1	1	1	1	1	1	1
30	700.55.136	活塞	Piston	1	1	1	1	1	1	1	1	1	1	1
31	700.55.137	活塞球座	Ball seat of piston	1	1	1	1	1	1	1	1	1	1	1
32	700.55.135	活塞顶杆	Top rod of piston	1	1	1	1	1	1	1	1	1	1	1
33	700.55.134	内提升臂	Inner lifting arm	1	1	1	1	1	1	1	1	1	1	1
34	700.55.138	销轴	Pin roll	1	1	1	1	1	1	1	1	1	1	1
35	GB/T91	销2×12	Pin 2×12	1	1	1	1	1	1	1	1	1	1	1
36	700.55.113	底板盖纸垫	Gasket ,base plate cover	1	1	1	1	1	1	1	1	1	1	1
37	700.55.112	底板盖	Base plate cover	1	1	1	1	1	1	1	1	1	1	1
38	700.55.111	提升器壳体纸垫	Gasket ,lifter housing	1	1	1	1	1	1	1	1	1	1	1
39	GB/T93	垫圈8	Washer 8	16	16	16	16	16	16	16	16	16	16	16
40	GB/T5781	螺栓M8×35	Bolt M8×35	16	16	16	16	16	16	16	16	16	16	16
41	GB/T5783	螺栓M12×40	Bolt M12×40	12	12	12	12	12	12	12	12	12	12	12
42	GB/T93	垫圈12	Washer 12	12	12	12	12	12	12	12	12	12	12	12



强升强降提升器总成 (选装)  
 Lifter assembly use hydraulic cylinder for forcibly raising and lowering (optional)

强升强降提升器总成（选装）

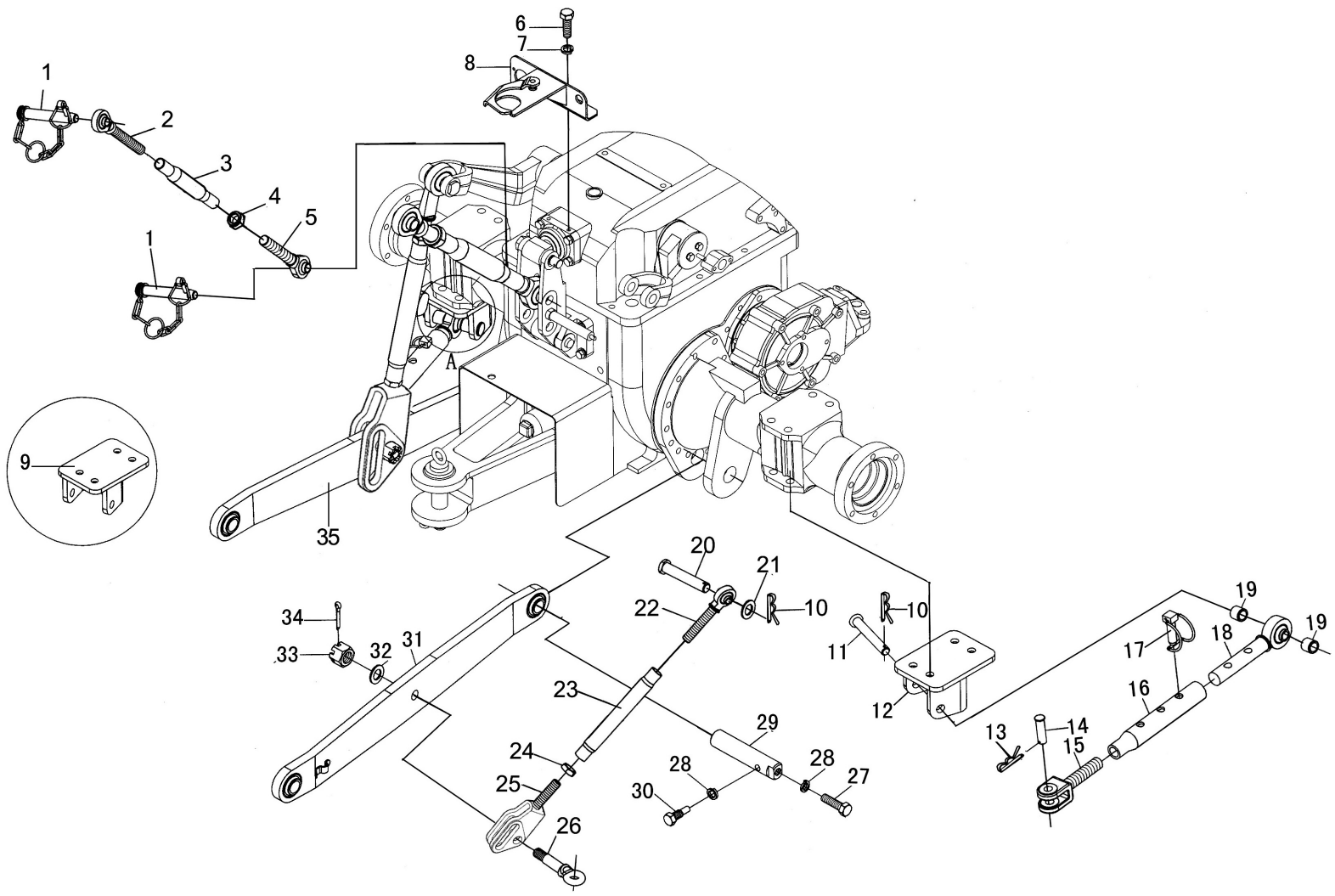
Lifter Assembly use hydraulic cylinder for forcibly raising and lowering(optional)

序号 Ser.No.	代号 Part No.	名称	Name	数量 Qty.										
				650	654	700	704	750	754	800	804	850	854	
1	GB/T5783	螺栓M8×25	Bolt M8×25	14	14	14	14	14	14	14	14	14	14	14
2	GB/T5783	垫圈8	Washer 8	18	18	18	18	18	18	18	18	18	18	18
3	700.55D.111	盖板	Plate	1	1	1	1	1	1	1	1	1	1	1
4	GB/T5783	螺栓M8×20	Bolt M8×20	4	4	4	4	4	4	4	4	4	4	4
5	700.55A.018	出气管焊合件	Air outlet pipe weldment	1	1	1	1	1	1	1	1	1	1	1
6	GB/T5783	螺栓M10×20	Bolt M10×20	2	2	2	2	2	2	2	2	2	2	2
7	GB/T93	垫圈10	Washer 10	2	2	2	2	2	2	2	2	2	2	2
8	700.55.115	左提升臂压板	Pressure plate of left lifting arm	1	1	1	1	1	1	1	1	1	1	1
9	700.55D.105	外提升臂(左)	Outer lifting arm (left)	1	1	1	1	1	1	1	1	1	1	1
10	JB/T7940.1	油杆M10×1	pole M10×1	1	1	1	1	1	1	1	1	1	1	1
11	700.55D.107	铜轴套	Sleeve	2	2	2	2	2	2	2	2	2	2	2
12	700.55D.016	油尺总成	Stop plate weldment	1	1	1	1	1	1	1	1	1	1	1
13	GB/T5783-1986	螺栓M12×40	Bolt M12×40	12	12	12	12	12	12	12	12	12	12	12
14	GB/T93-1987	垫圈12	Washer 12	12	12	12	12	12	12	12	12	12	12	12
15	700.55D.103	提升轴支架	Bracket of lifting shaft	1	1	1	1	1	1	1	1	1	1	1
16	700.55D.101	提升轴	Lifting shaft	1	1	1	1	1	1	1	1	1	1	1
17	700.55D.102	提升小臂	Lifting arm	1	1	1	1	1	1	1	1	1	1	1
18	700.55D.106	外提升臂(右)	Outer lifting arm (right)	1	1	1	1	1	1	1	1	1	1	1
19	700.55D.116	右提升臂压板	Pressure plate of right lifting arm	1	1	1	1	1	1	1	1	1	1	1
20	700.55D.018	限位推板焊合	Stop plate weldment	1	1	1	1	1	1	1	1	1	1	1
21	GB/T93-1987	垫圈16	Washer 16	13	13	13	13	13	13	13	13	13	13	13
22	GB/T5783	螺栓M16×35	Bolt M16×35	1	1	1	1	1	1	1	1	1	1	1
23	700.58A.018	后连接销焊合件	Joint pin weldment	2	2	2	2	2	2	2	2	2	2	2

续. 强升强降提升器总成 (选装)

Cont. Lifter Assembly use hydraulic cylinder for forcibly raising and lowering(optional)

序号 Ser.No.	代号 Part No.	名称	Name	数量 Qty.									
				650	654	700	704	750	754	800	804	850	854
24	GB/T5783	螺栓M16×70	Bolt M16×70	8	8	8	8	8	8	8	8	8	8
25	GB/T5783	螺栓M16×50	Bolt M16×50	4	4	4	4	4	4	4	4	4	4
26	GB/T91	销5×50	Pin 5×50	1	1	1	1	1	1	1	1	1	1
27	GB/T95	垫圈24	Washer 24	1	1	1	1	1	1	1	1	1	1
28	700.58A.101	液压油缸座	Base of hydraulic cylinder	1	1	1	1	1	1	1	1	1	1
29	700.58A.102	油缸销轴	Cylinder Pin roll assembly	1	1	1	1	1	1	1	1	1	1
30	YG100	液压油缸	Hydraulic cylinder	1	1	1	1	1	1	1	1	1	1



悬挂机构总成  
Suspension Mechanism Assembly

# 悬挂机构总成

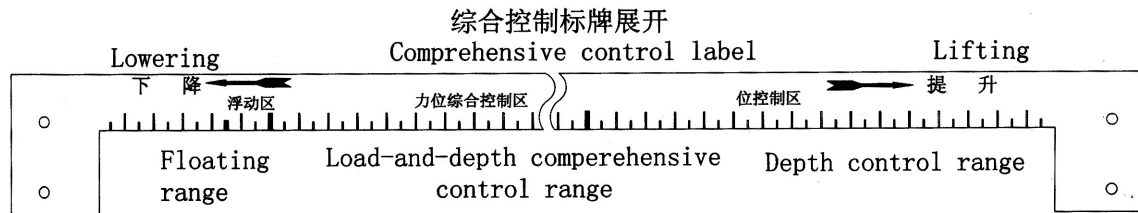
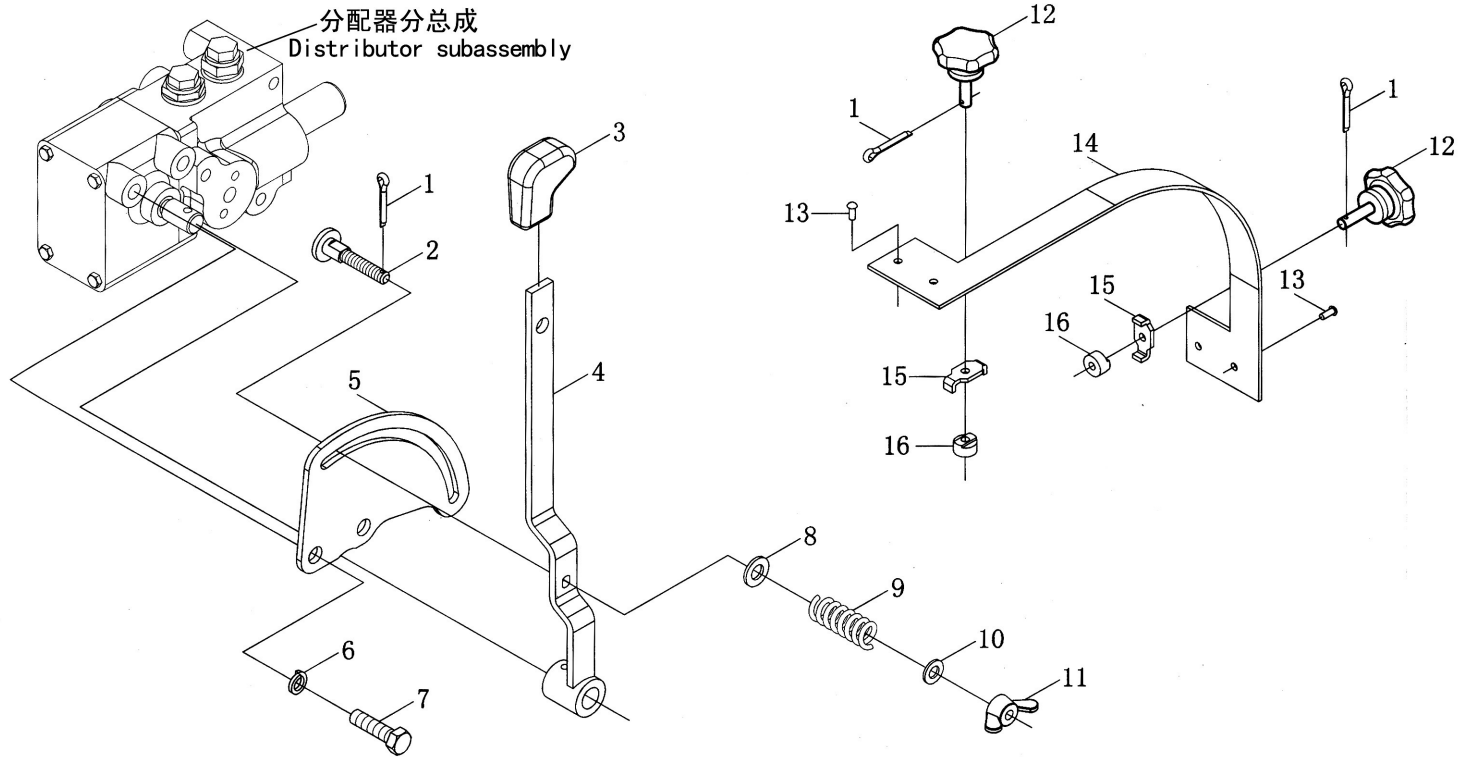
## Suspension Mechanism Assembly

序号 Ser.No.	代号 Part No.	名称	Name	数量 Qty.										
				650	654	700	704	750	754	800	804	850	854	
1	700.56.015	上拉杆锁销总成	Latch assembly ,upper link	2	2	2	2	2	2	2	2	2	2	2
2	700.56.026	上拉杆前调节杆总成	Front adjusting rod assembly ,upper link	1	1	1	1	1	1	1	1	1	1	1
3	700.56.027	上拉杆螺管总成	Screw tube assembly ,upper link	1	1	1	1	1	1	1	1	1	1	1
4	700.56.130	上拉杆锁紧螺母M30×3	Locking cap nut MM30×3 (left)	1	1	1	1	1	1	1	1	1	1	1
5	700.56.029	上拉杆后调节杆总成	Back adjusting rod assembly ,upper link	1	1	1	1	1	1	1	1	1	1	1
6	GB/T5783	螺栓M8×20	Bolt M8×20	2	2	2	2	2	2	2	2	2	2	2
7	GB/T93	垫圈8	Washer 8	2	2	2	2	2	2	2	2	2	2	2
8	700.56.017	上拉杆固定卡组合件	Fixed keeper unit , upper link	1	1	1	1	1	1	1	1	1	1	1
9	700.56.016	限位杆左支架焊合件	Left bracket weldment ,gag post	1	1	1	1	1	1	1	1	1	1	1
10	160.35.107	弹簧锁销	Lock pin	2	2	2	2	2	2	2	2	2	2	2
11	700.56.104	限位杆连接销	Connecting pin ,gag post	2	2	2	2	2	2	2	2	2	2	2
12	700.56.018	限位杆右支架焊合件	Right bracket weldment ,gag post	1	1	1	1	1	1	1	1	1	1	1
13	184.35.102	弹簧锁销	Lock pin	2	2	2	2	2	2	2	2	2	2	2
14	GB/T882	销轴B8×65	Clevis pin with head B8×65	2	2	2	2	2	2	2	2	2	2	2
15	700.56.108	限位杆调节螺杆	Adjusting screw rod ,gag post	2	2	2	2	2	2	2	2	2	2	2
16	700.58.112	伸缩导管	Telescopic pipeline	2	2	2	2	2	2	2	2	2	2	2
17	700.56.023	限位杆锁销组合件	Locking pin unit ,gag post	2	2	2	2	2	2	2	2	2	2	2
18	700.56.021	伸缩杆球头总成	Ball head assembly ,telescopic rod	2	2	2	2	2	2	2	2	2	2	2
19	700.56.105	套	Sleeve	4	4	4	4	4	4	4	4	4	4	4
20	700.56.102	提升杆上连接销	Upper connecting pin , lift link	2	2	2	2	2	2	2	2	2	2	2
21	700.58.103	垫圈	Washer	2	2	2	2	2	2	2	2	2	2	2
22	700.56.025	提升杆上调节杆总成	Upper adjusting rod unit , lift link	2	2	2	2	2	2	2	2	2	2	2
23	700.56.118	提升杆套管	Screw tube weldment , lift link	2	2	2	2	2	2	2	2	2	2	2

续. 悬挂机构总成

Cont. Suspension Mechanism Assembly

序号 Ser.No.	代号 Part No.	名称	Name	数量 Qty.										
				650	654	700	704	750	754	800	804	850	854	
24	700.56.117	锁紧螺母M27×2	Locking nut M27×2	2	2	2	2	2	2	2	2	2	2	2
25	700.56.023-1	提升杆下调节杆焊合件	Upper adjusting rod ,lift link	2	2	2	2	2	2	2	2	2	2	2
26	700.56.101-1	提升杆下连接销	Lower connecting pin ,lift link	2	2	2	2	2	2	2	2	2	2	2
27	GB/T5783	螺栓M12×25	Bolt M12×25	2	2	2	2	2	2	2	2	2	2	2
28	GB/T93	垫圈12	Washer 12	4	4	4	4	4	4	4	4	4	4	4
29	700.56.106	下拉杆连接销	Connecting pin ,lower link	2	2	2	2	2	2	2	2	2	2	2
30	700.56.107	定位螺栓	Bolt	2	2	2	2	2	2	2	2	2	2	2
31	700.56.013-3	右下拉杆总成	Right Lower link assembly	1	1	1	1	1	1	1	1	1	1	1
32	GB/T97.1	垫圈20	Washer 20	2	2	2	2	2	2	2	2	2	2	2
33	GB/T6181	螺母20	Nut 20	2	2	2	2	2	2	2	2	2	2	2
34	GB/T91	开口销5×32	Split pin 5×32	2	2	2	2	2	2	2	2	2	2	2
35	700.56.019-3	左下拉杆总成	Left Lower Link assembly	1	1	1	1	1	1	1	1	1	1	1



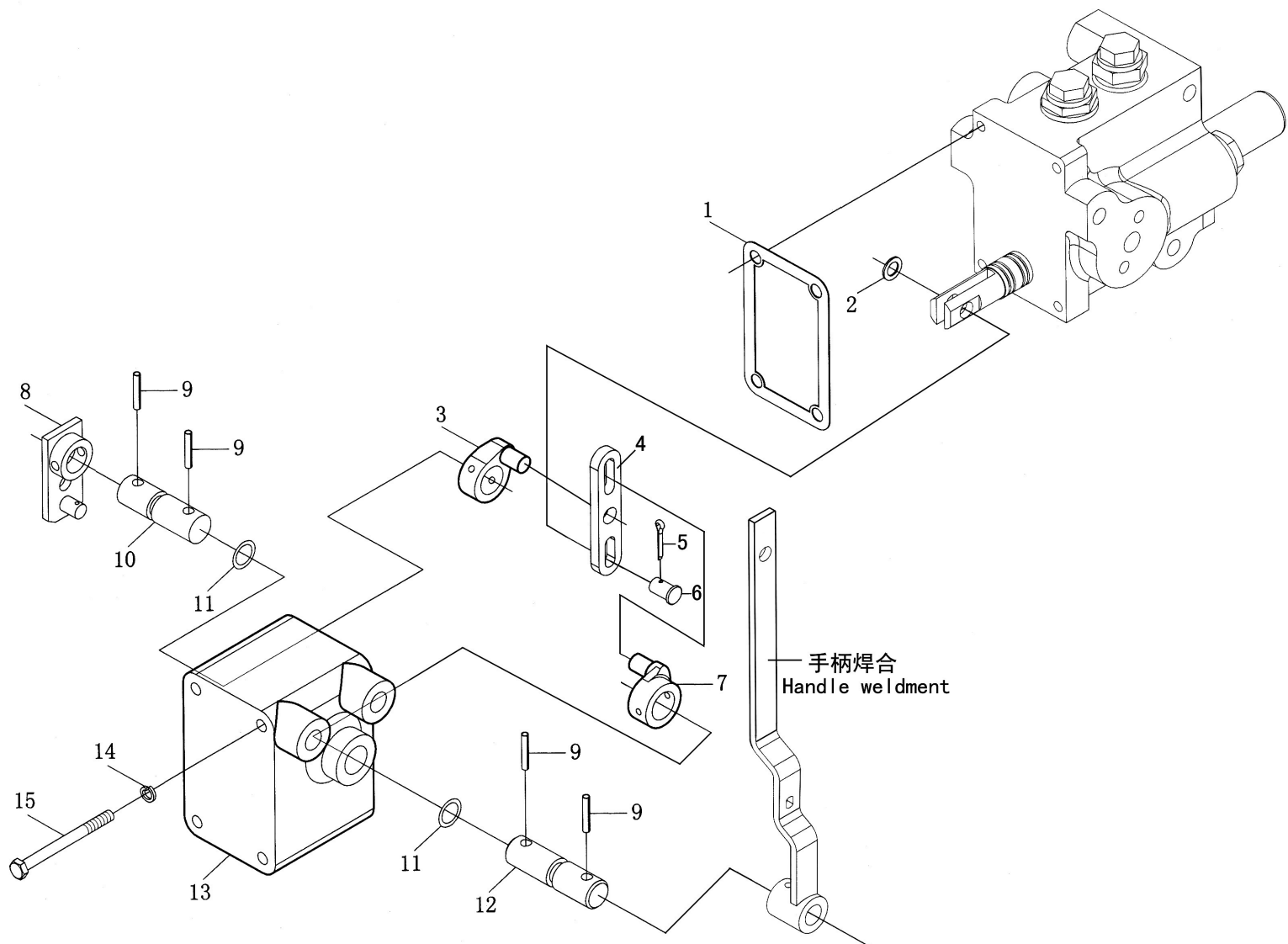
分配器总成 (一)  
Distributor Assembly ( I )



分配器总成 (一)

Distributor Assembly ( I )

序号 Ser.No.	代号 Part No.	名称	Name	数量 Qty.										
				650	654	700	704	750	754	800	804	850	854	
1	GB/T91	销1.6×12	Pin 1.6×12	3	3	3	3	3	3	3	3	3	3	3
2	700.57.103	手柄压紧螺钉	Pressure screw ,handle	1	1	1	1	1	1	1	1	1	1	1
3	700.57.013	手柄头总成	Handle knob assembly	1	1	1	1	1	1	1	1	1	1	1
4	700.57.012	手柄焊合件	Handle weldment	1	1	1	1	1	1	1	1	1	1	1
5	700.57.101	操纵板	Operation plate	1	1	1	1	1	1	1	1	1	1	1
6	GB/T93	垫圈10	Washer 10	2	2	2	2	2	2	2	2	2	2	2
7	GB/T5783	螺栓M10×40	Bolt M10×40	2	2	2	2	2	2	2	2	2	2	2
8	GB/T97.1	垫圈8	Washer 8	1	1	1	1	1	1	1	1	1	1	1
9	700.57.102	手柄压紧弹簧	Pressured spring	1	1	1	1	1	1	1	1	1	1	1
10	GB/T97.1	垫圈6	Washer 6	1	1	1	1	1	1	1	1	1	1	1
11	GB/T62	螺母M6	Nut M6	1	1	1	1	1	1	1	1	1	1	1
12	700.57.014	调节手柄头总成	Adjusting handle knob assembly	2	2	2	2	2	2	2	2	2	2	2
13	GB/T827	铆钉4×10	Rivet 4×10	4	4	4	4	4	4	4	4	4	4	4
14	700.57.106	综合控制标牌	Comprehensive control plate	1	1	1	1	1	1	1	1	1	1	1
15	700.57.105	定位弯板	Locating elbow plate	2	2	2	2	2	2	2	2	2	2	2
16	700.57.104	定位螺母	Locating nut	2	2	2	2	2	2	2	2	2	2	2

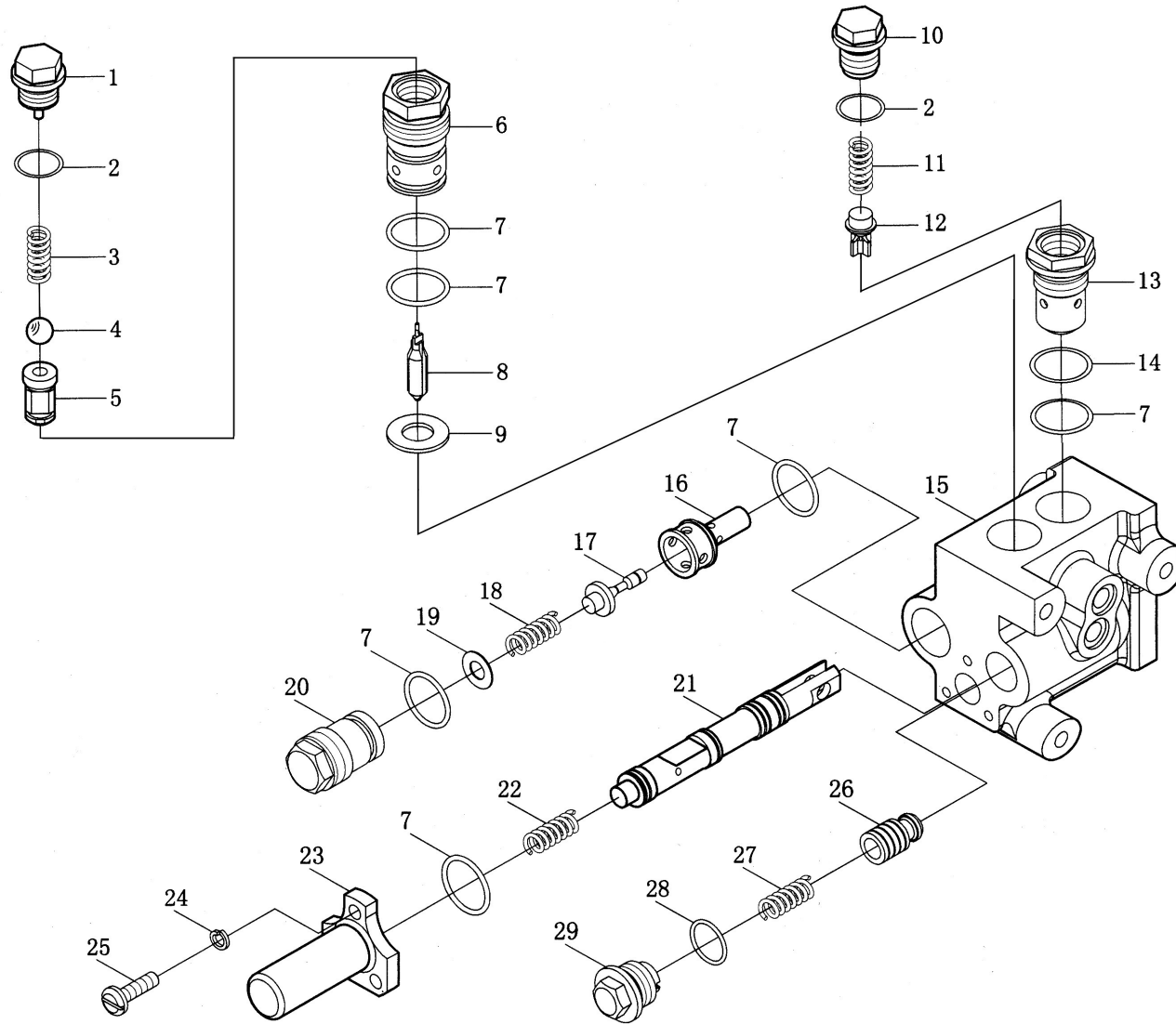


分配器总成 (二)  
Distributor Assembly (II)

分配器总成 (二)

Distributor Assembly(II)

序号 Ser.No.	代号 Part No.	名称	Name	数量 Qty.										
				650	654	700	704	750	754	800	804	850	854	
1	700.57.128	纸垫	Gasket	1	1	1	1	1	1	1	1	1	1	1
2	GB/T97.1	垫圈8	Washer 8	1	1	1	1	1	1	1	1	1	1	1
3	700.57.130	反馈小臂	Small feedback arm	1	1	1	1	1	1	1	1	1	1	1
4	700.57.129	摆杆	Swing rod	1	1	1	1	1	1	1	1	1	1	1
5	GB/T91	销2×12	Pin 2×12	1	1	1	1	1	1	1	1	1	1	1
6	700.57.121	销轴	Pin roll	1	1	1	1	1	1	1	1	1	1	1
7	700.57.120	操纵臂	Operation arm	1	1	1	1	1	1	1	1	1	1	1
8	700.57.016	反馈臂焊合件	Feedback arm welding unit	1	1	1	1	1	1	1	1	1	1	1
9	GB/T879	弹性圆柱销5×24	Spirng - type straight pin 5×24	4	4	4	4	4	4	4	4	4	4	4
10	700.57.119	反馈轴	Feedback shaft	1	1	1	1	1	1	1	1	1	1	1
11	GB3452.1	O形密封圈9.5×2.65	O-seal ring 9.5×2.65	2	2	2	2	2	2	2	2	2	2	2
12	700.57.118	手柄轴	Handle shaft	4	4	4	4	4	4	4	4	4	4	4
13	700.57.127	侧盖	Side cover	4	4	4	4	4	4	4	4	4	4	4
14	GB/T93	垫圈6	Washer 6	4	4	4	4	4	4	4	4	4	4	4
15	GB/T5783	螺栓M6×70	Bolt M6×70	4	4	4	4	4	4	4	4	4	4	4



分配器总成 (三)  
Distributor Assembly (III)

分配器总成 (三)

Distributor Assembly(III)

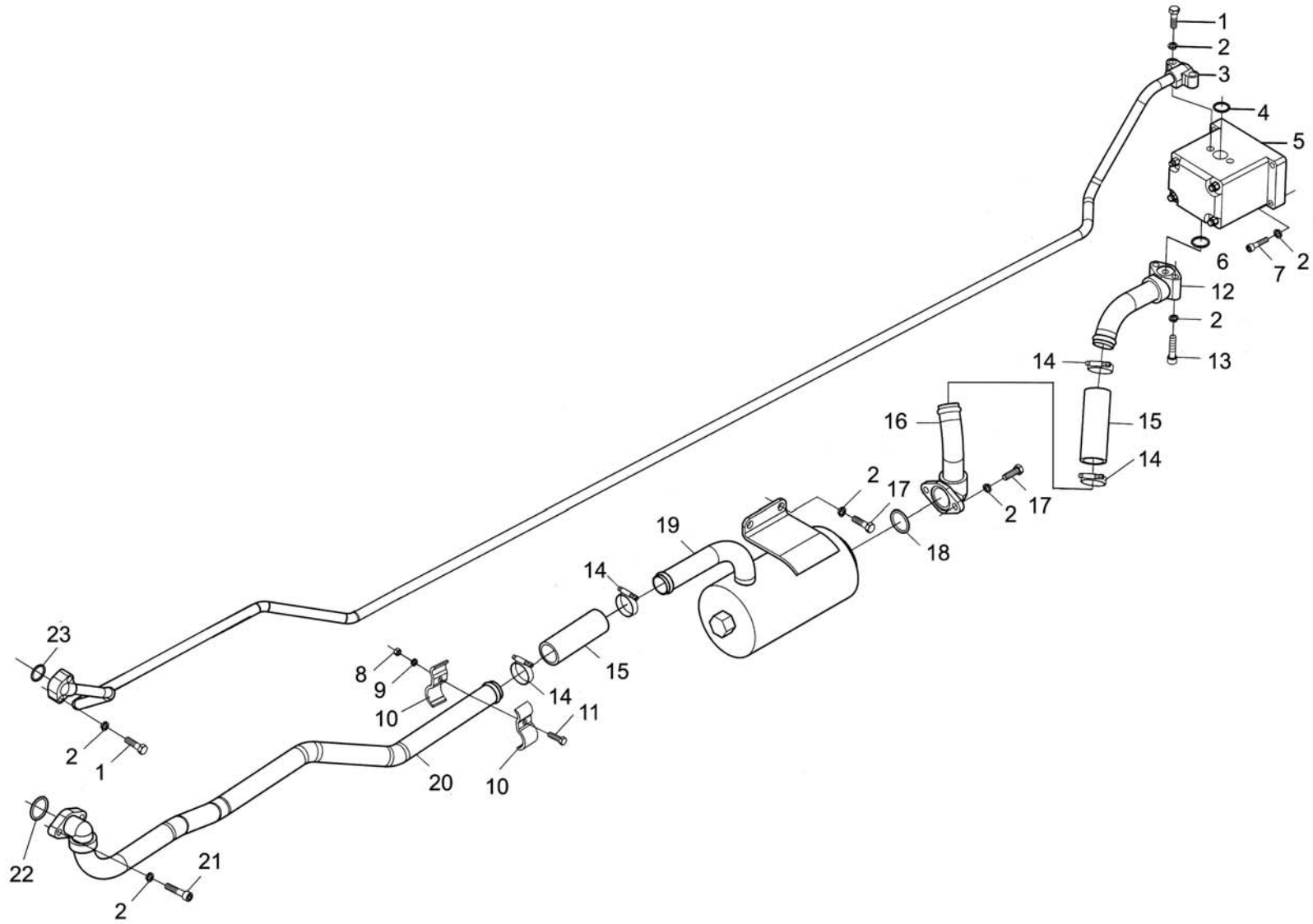
序号 Ser.No.	代号 Part No.	名称	Name	数量 Qty.										
				650	654	700	704	750	754	800	804	850	854	
1	700.57.147	下降阀堵塞	Plug ,lowering valve	1	1	1	1	1	1	1	1	1	1	1
2	GB 3452.1	O形密封圈16×1.8	O-seal ring 16×1.8	2	2	2	2	2	2	2	2	2	2	2
3	700.57.150	下降阀弹簧	Spring ,lowering valve	1	1	1	1	1	1	1	1	1	1	1
4	GB/T308	钢球Φ5.0000G100b	Steel ball Φ5.0000G100b	1	1	1	1	1	1	1	1	1	1	1
5	700.57.149	下降阀体	Lowering valve body	1	1	1	1	1	1	1	1	1	1	1
6	700.57.148	下降阀套	Lowering valve housing	1	1	1	1	1	1	1	1	1	1	1
7	GB 3452.1	O形密封圈19×2.65	O-seal ring 19×2.65	6	6	6	6	6	6	6	6	6	6	6
8	700.57.124	推销	Push pin	1	1	1	1	1	1	1	1	1	1	1
9	700.57.163	调整垫片	Adjusting shim	△	△	△	△	△	△	△	△	△	△	△
	700.57.164	调整垫片	Adjusting shim	△	△	△	△	△	△	△	△	△	△	△
	700.57.165	调整垫片	Adjusting shim	△	△	△	△	△	△	△	△	△	△	△
10	700.57.155	单向阀堵塞	Plug ,one -way valve	1	1	1	1	1	1	1	1	1	1	1
11	700.57.154	单向阀弹簧	Spring ,one -way valve	1	1	1	1	1	1	1	1	1	1	1
12	700.57.152	单向阀体	One-way valve body	1	1	1	1	1	1	1	1	1	1	1
13	700.57.153	单向阀座	One -way valve seat	1	1	1	1	1	1	1	1	1	1	1
14	GB3452.1	O形密封圈25.7×2.65	O-seal ring 25.7×2.65	1	1	1	1	1	1	1	1	1	1	1
15	700.57.125	分配器壳体	Distributor housing	1	1	1	1	1	1	1	1	1	1	1
16	700.57.015	安全阀座压合件	Safety valve seat unit	1	1	1	1	1	1	1	1	1	1	1
17	700.57.117	安全阀体	Safety valve body	1	1	1	1	1	1	1	1	1	1	1
18	700.57.116	安全阀弹簧	Safety valve valve	1	1	1	1	1	1	1	1	1	1	1
19	700.57.160	调整垫片	Adjusting shim	△	△	△	△	△	△	△	△	△	△	△
	700.57.161	调整垫片	Adjusting shim	△	△	△	△	△	△	△	△	△	△	△

△适量 Just right amout

续. 分配器总成 (三)

Cont.Distributor Assembly(III)

序号 Ser.No.	代号 Part No.	名称	Name	数量 Qty.										
				650	654	700	704	750	754	800	804	850	854	
	700.57.162	调整垫片	Adjusting shim	△	△	△	△	△	△	△	△	△	△	△
20	700.57.115	安全阀弹簧座	Spring seat ,safety valve	1	1	1	1	1	1	1	1	1	1	1
21	700.57.132	主控制阀	Main control valve	1	1	1	1	1	1	1	1	1	1	1
22	700.57.122	主阀弹簧	Spring ,main valve	1	1	1	1	1	1	1	1	1	1	1
23	700.57.123	主阀前盖	Front cap ,main valve	1	1	1	1	1	1	1	1	1	1	1
24	GB/T859	垫圈6	Washer 6	1	1	1	1	1	1	1	1	1	1	1
25	GB/T67	螺钉M6×16	Screw M6×16	1	1	1	1	1	1	1	1	1	1	1
26	700.57.114	回油阀体	Oil return valve body	1	1	1	1	1	1	1	1	1	1	1
27	700.57.113	回油阀弹簧	Oil return valve spring	3	3	3	3	3	3	3	3	3	3	3
28	GB3452.1	O形密封圈21.2×2.65	O-seal ring 21.2×2.65	3	3	3	3	3	3	3	3	3	3	3
29	700.57.112	回油阀堵塞	Plug ,oil return valve	1	1	1	1	1	1	1	1	1	1	1
△适量 Just right amout														



油泵油管滤油器总成(一)  
Oil Pump/pipe and Filter Assembly( I )

油泵油管滤油器总成(一)

Oil Pump/Pipe and Filter Assembly( I )

序号 Ser.No.	代号 Part No.	名称	Name	数量 Qty.										
				650	654	700	704	750	754	800	804	850	854	
1	GB/T5783	螺栓M8×30	Bolt M8×30	4	4	4	4	4	4	4	4	4	4	4
2	GB/T93	垫圈 8	Washer 8	12	12	12	12	12	12	12	12	12	12	12
3	700.58.020-1	压力油管焊合件	Pressure oil pipe weldment	1	1	1	1	1	1	1	1	1	1	1
	700.58.020W-1 <sup>①</sup>	压力油管焊合件	Pressure oil pipe weldment					1	1	1	1	1	1	1
4	GB3452.1	O形密封圈15 ×2.65	O-ring 15×2.65	1	1	1	1	1	1	1	1	1	1	1
5	CBT-E316FL	齿轮泵	Gear pump	1	1	1	1	1	1	1	1	1	1	1
6	GB3452.1	O形密封圈 19×2.65	O-ring 19×2.65	1	1	1	1	1	1	1	1	1	1	1
7	GB/T70.1	螺钉M8×40	Screw M8×40	4	4	4	4	4	4	4	4	4	4	4
8	GB/T6170	螺母6	Nut 6	1	1	1	1	1	1	1	1	1	1	1
9	GB/T93	垫圈6	Washer 6	1	1	1	1	1	1	1	1	1	1	1
10	700.58.060	油管夹与胶垫胶合	Pipe clamp and rubber clamp	1	1	1	1	1	1	1	1	1	1	1
11	GB/T5783	螺栓M6×30	Bolt M6×30	1	1	1	1	1	1	1	1	1	1	1
12	700.58.050	吸油短管焊合件(2)	Oil suction short pipe welement 2	1	1	1	1	1	1	1	1	1	1	1
	700.58.050W <sup>①</sup>	吸油短管焊合件(3)	Oil suction short pipe welement 3					1	1	1	1	1	1	1
13	GB/T5783	螺栓M8×50	Bolt M8×50	2	2	2	2	2	2	2	2	2	2	2
14	ZBJ 15001	卡箍D40	Hoop D40	4	4	4	4	4	4	4	4	4	4	4
15	700.58.105A	夹布输油胶管	Oil supply hose	2	2	2	2	2	2	2	2	2	2	2
16	700.58.040	吸油短管焊合件(1)	Oil suction short pipe welement 1	1	1	1	1	1	1	1	1	1	1	1
17	GB/T5783	螺栓M8×20	Bolt M8×20	4	4	4	4	4	4	4	4	4	4	4
18	GB3452.1	O形密封圈31.5×2.65	O-ring 31.5×2.65	1	1	1	1	1	1	1	1	1	1	1
19	WLQ-21	滤清器总成	Oil filter assembly	1	1	1	1	1	1	1	1	1	1	1
20	700.58.030	吸油长管焊合件	Oil suction long pipe weldment	1	1	1	1	1	1	1	1	1	1	1

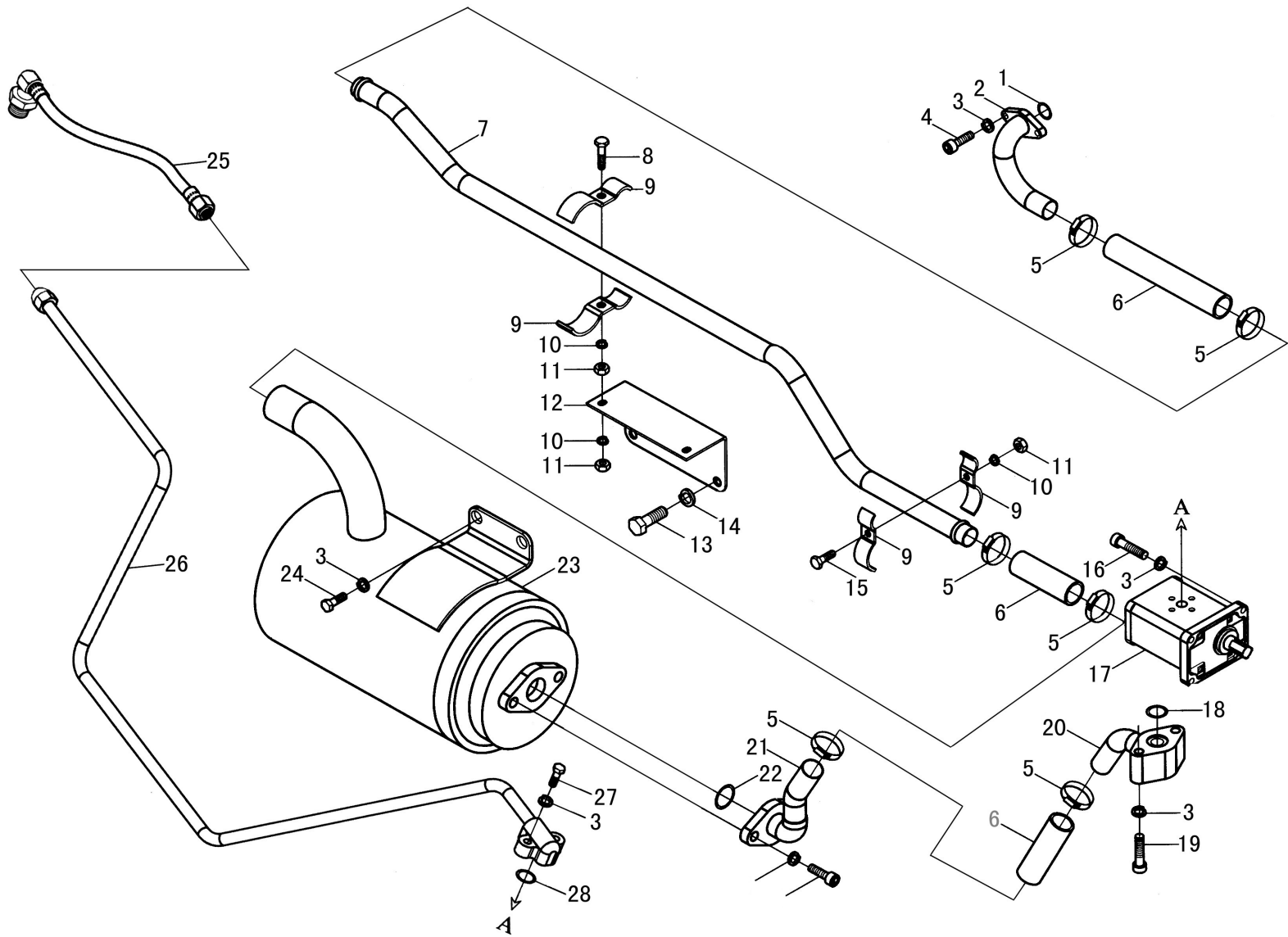
<sup>①</sup> 配潍柴柴油机专用



油泵油管滤油器总成(一)

Oil Pump/Pipe and Filter Assembly( I )

序号 Ser.No.	代号 Part No.	名称	Name	数量 Qty.										
				650	654	700	704	750	754	800	804	850	854	
21	GB/T5783	螺栓M8×25	Bolt M8×25	2	2	2	2	2	2	2	2	2	2	2
22	GB3452.1	O形密封圈 21.2×2.65	O-ring 21.2×2.65	1	1	1	1	1	1	1	1	1	1	1
23	GB3452.1	O形密封圈 11.8×2.65	O-ring 11.8×2.65	1	1	1	1	1	1	1	1	1	1	1



油泵油管滤油器总成(二)  
Oil Pump/pipe and Filter Assembly( II )

油泵油管滤油器总成(二)

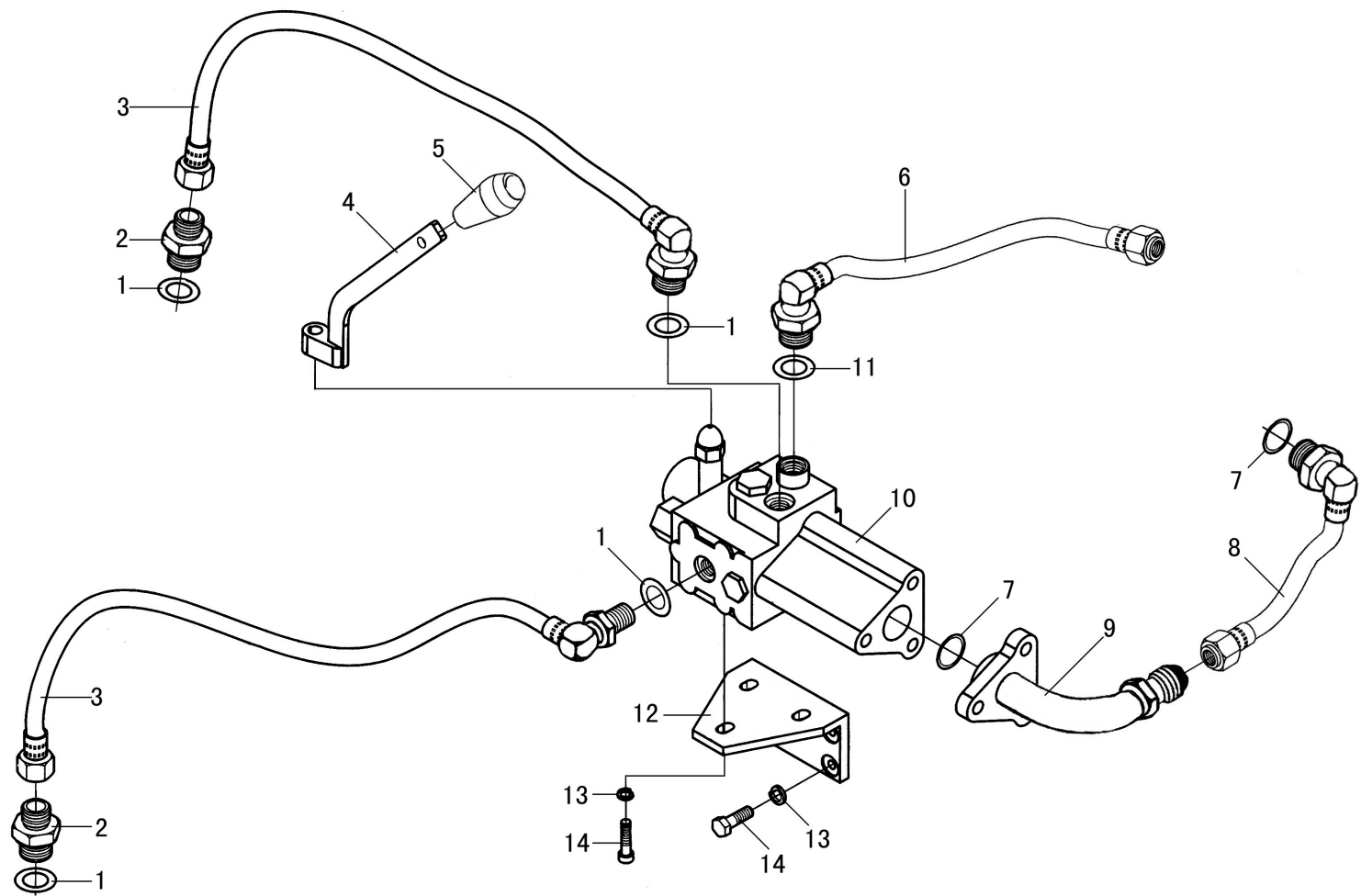
Oil Pump/Pipe and Filter Assembly(II)

序号 Ser.No.	代号 Part No.	名称	Name	数量 Qty.										
				650	654	700	704	750	754	800	804	850	854	
1	GB/T3452.1	O形密封圈21.2×2.65G	O-seal ring 21.2×2.65G	1	1	1	1	1	1	1	1	1	1	1
2	700.58A.016	提升器吸油接头焊合件	Joint of oil pipe,lifter assmebly	1	1	1	1	1	1	1	1	1	1	1
3	GB/T93	垫圈8	Washer 8	14	14	14	14	14	14	14	14	14	14	14
4	GB/T5783	螺栓M8×25	Bolt M8×25	4	4	4	4	4	4	4	4	4	4	4
5	ZBJ15001	喉箍D40	Clamp D40	6	6	6	6	6	6	6	6	6	6	6
6	700.58.105A	夹布输出胶管	Fuel transfer pipe assembly	3	3	3	3	3	3	3	3	3	3	3
7	700.58A.111	齿轮泵吸油长管	Oil suction long pipe weldment	1	1	1	1	1	1	1	1	1	1	1
8	GB/T5783	螺栓M6×50	Bolt M6×50	2	2	2	2	2	2	2	2	2	2	2
9	700.58.060	油管夹与胶垫胶合	Pipe clamp and rubber clamp	6	6	6	6	6	6	6	6	6	6	6
10	GB/T93	垫圈6	Washer 6	4	4	4	4	4	4	4	4	4	4	4
11	GB/T6170	螺母M6	Nut M6	4	4	4	4	4	4	4	4	4	4	4
12	700.58A.106	油管固定架	Fixed frame of oil pipe	1	1	1	1	1	1	1	1	1	1	1
13	GB/T5783	螺栓M10×25	Bolt M10×25	2	2	2	2	2	2	2	2	2	2	2
14	GB/T93	垫圈10	Washer 10	2	2	2	2	2	2	2	2	2	2	2
15	GB/T5783	螺栓M6×30	Bolt M6×30	2	2	2	2	2	2	2	2	2	2	2
16	GB/T70.1	螺钉M8×24	Bolt M8×24	4	4	4	4	4	4	4	4	4	4	4
17	LBT-E320F12	齿轮泵	Gear pump	1	1	1	1	1	1	1	1	1	1	1
18	GB/T3452.1	O形密封圈19×2.65G	O-seal ring 19×2.65G	1	1	1	1	1	1	1	1	1	1	1
19	GB/T5783	螺栓M8×50	Bolt M8×50	2	2	2	2	2	2	2	2	2	2	2
20	700.58.050	吸油管短管焊合Ⅱ	Oil suction short pipe weldment Ⅱ	1	1	1	1	1	1	1	1	1	1	1
21	700.58.040	吸油管短管焊合Ⅰ	Oil suction short pipe weldment Ⅰ	1	1	1	1	1	1	1	1	1	1	1
22	GB/T3452.1	O形密封圈31.5×2.65G	O-seal ring 31.5×2.65G	1	1	1	1	1	1	1	1	1	1	1
23	700.58.041	滤油器总成	Oil filter assembly	1	1	1	1	1	1	1	1	1	1	1

油泵油管滤油器总成(二)

Oil Pump/Pipe and Filter Assembly(II)

序号 Ser.No.	代号 Part No.	名称	Name	数量 Qty.										
				650	654	700	704	750	754	800	804	850	854	
24	GB/T5783	螺栓M8×20	Bolt M8×20	2	2	2	2	2	2	2	2	2	2	2
25	700.58A.012	分配器进油软管	Oil inlet pipe assembly	1	1	1	1	1	1	1	1	1	1	1
26	700.58A.015	阀进油钢管焊合件	Oil inlet steel tube weldment	1	1	1	1	1	1	1	1	1	1	1
27	GB/T5783	螺栓M8×30	Bolt M8×30	2	2	2	2	2	2	2	2	2	2	2
28	GB/T3452.1	O形密封圈15×2.65G	O-seal ring 15×2.65G	1	1	1	1	1	1	1	1	1	1	1

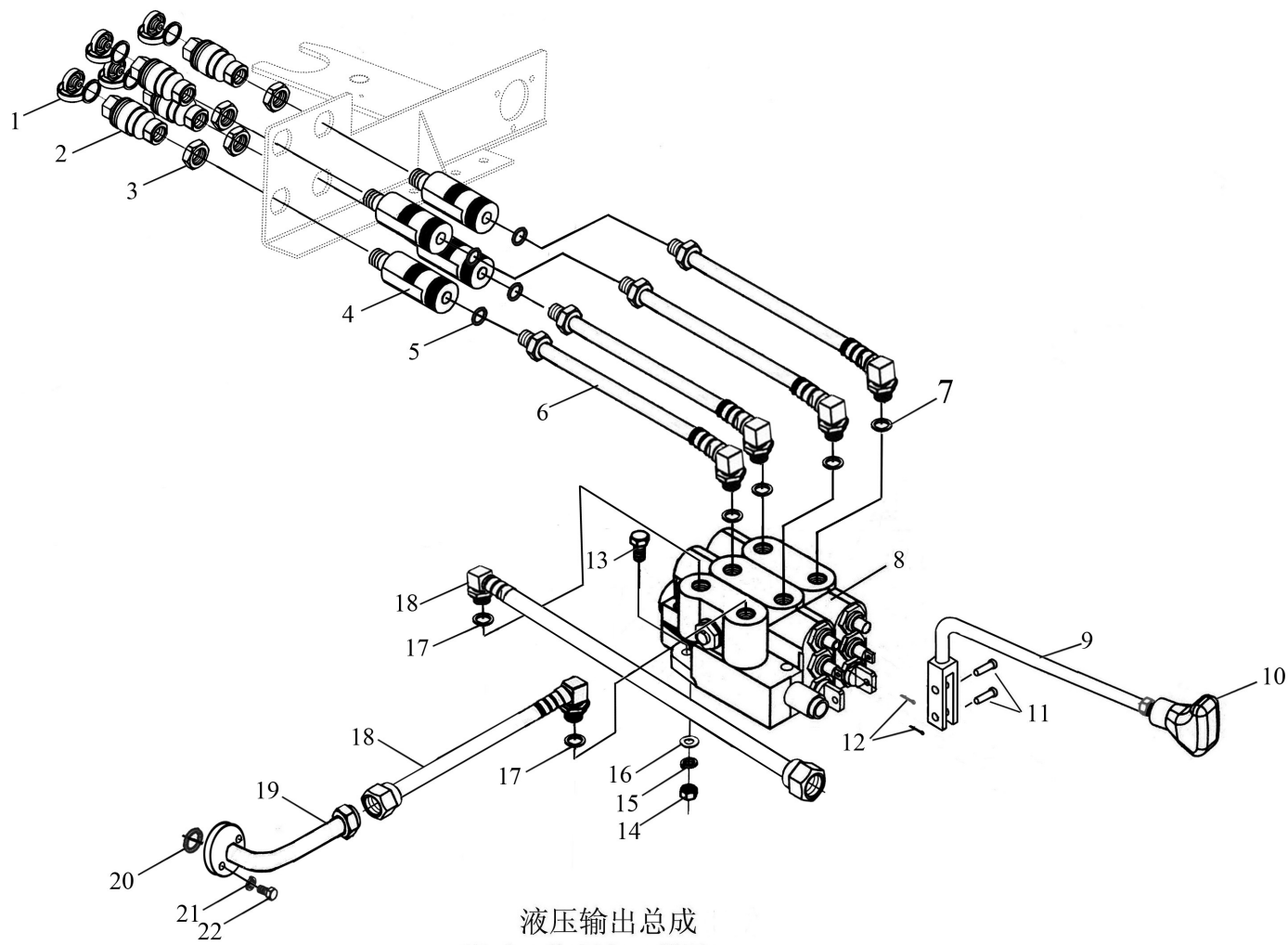


油泵油管滤油器总成(强升强降型专用)(三)  
 Oil Pump/pipe and Filter Assembly(Special for lift hydraulic cylinder)(III)

油泵油管滤油器总成(强升强降型专用)(三)

Oil Pump/Pipe and Filter Assembly(Special for lift hydraulic cylinder)(III)

序号 Ser.No.	代号 Part No.	名称	Name	数量 Qty.										
				650	654	700	704	750	754	800	804	850	854	
1	JB/T982	复合垫圈20	Washer 20	4	4	4	4	4	4	4	4	4	4	4
2	700.58A.104	油缸接头	Joint of hydraulic cylinder	2	2	2	2	2	2	2	2	2	2	2
3	700.58A.011	油缸进出油软管	Hose assembly,hydraulic cylinder	2	2	2	2	2	2	2	2	2	2	2
4	700.58A.017	分配器手柄焊合件	Handle weldment	1	1	1	1	1	1	1	1	1	1	1
5	160.37.032-2	副变速手柄合件	Auxiliary gearshift handle cap	1	1	1	1	1	1	1	1	1	1	1
6	700.58A.012	分配器进油软管	Tube of inlet	1	1	1	1	1	1	1	1	1	1	1
7	JB/T982	复合垫圈22	Washer 22	2	2	2	2	2	2	2	2	2	2	2
8	700.58A.014	分配器回油软管	Tube of return oil	1	1	1	1	1	1	1	1	1	1	1
9	700.58A.013	分配器回油接头焊合件	Joint of return oil	1	1	1	1	1	1	1	1	1	1	1
10	FP175M1-002TF	分配器	Distributor subassembly	1	1	1	1	1	1	1	1	1	1	1
11	JB/T982	复合垫圈24	Washer 24	1	1	1	1	1	1	1	1	1	1	1
12	700.58A.105	分配器支架	Support of distributor subassembly	1	1	1	1	1	1	1	1	1	1	1
13	GB/T93	垫圈10	Washer 10	7	7	7	7	7	7	7	7	7	7	7
14	GB/T5783	螺栓M10×25	Bolt M10×25	7	7	7	7	7	7	7	7	7	7	7
15														
16														
17														
18														
19														
20														
21														
22														
23														



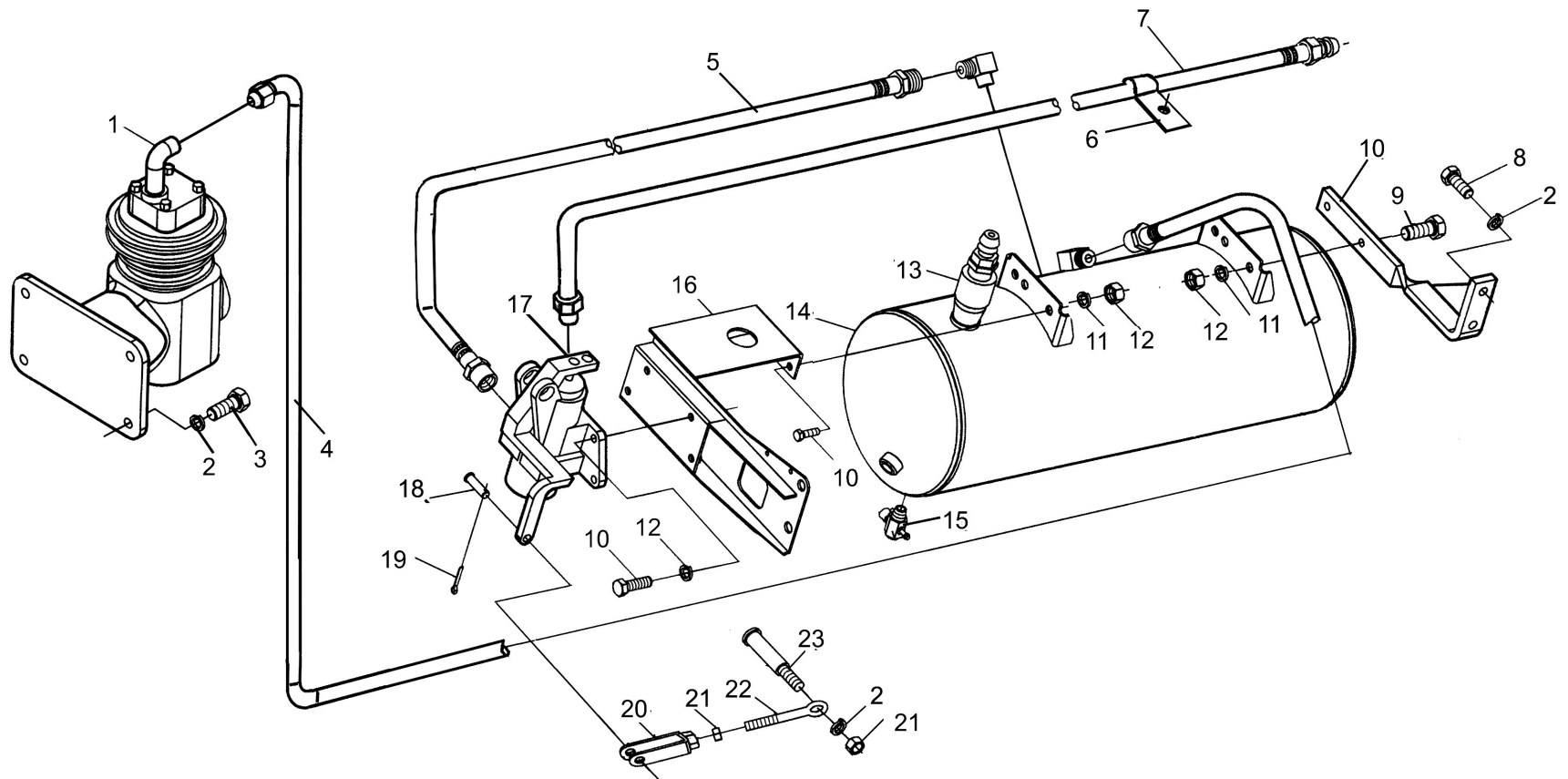
液压输出总成  
 Hydraulic Take-off Pipe

## 液压输出总成

### Hydraulic Take-off pipe

序号 Ser.No.	代号 Part No.	名称	Name	数量 Qty.										
				650	654	700	704	750	754	800	804	850	854	
1	160.54.220	快换接头防尘罩(I)	Dust cover(I)	4	4	4	4	4	4	4	4	4	4	4
2		快换接头TRA12.5	Quick release connector TRA12.5	4	4	4	4	4	4	4	4	4	4	4
3	GB/T6173	六角薄螺母M27×1.5	Bolt M27×1.5	4	4	4	4	4	4	4	4	4	4	4
4	160.54.310	进出油管接头	Connector	4	4	4	4	4	4	4	4	4	4	4
5	GB/T3452.1	O型密封圈11.2×2.65	O-ring 11.2×2.65	4	4	4	4	4	4	4	4	4	4	4
6	700.58.082	多路阀输出软管	Oil pipe	4	4	4	4	4	4	4	4	4	4	4
7		复合垫圈18	Washer 18	4	4	4	4	4	4	4	4	4	4	4
8	DL-8J-2	双路换向阀	Multi-way valve	1	1	1	1	1	1	1	1	1	1	1
9	700.58.803	多路阀操纵杆 I	Control handle I	2	2	2	2	2	2	2	2	2	2	2
10	160.54.044	换向阀手柄合件	Handle knob assembly	2	2	2	2	2	2	2	2	2	2	2
11	GB/T91	开口销2×16	Split pin 2×16	2	2	2	2	2	2	2	2	2	2	2
12	GB/T882	销轴B5×20	Axis pin B5×20	2	2	2	2	2	2	2	2	2	2	2
13	GB/T5783	螺栓M10×40	Bolt M10×40	3	3	3	3	3	3	3	3	3	3	3
14	GB/T6170	螺母M10	Nut M10	3	3	3	3	3	3	3	3	3	3	3
15	GB/T93	垫圈10	Washer 10	3	3	3	3	3	3	3	3	3	3	3
16	GB/T97.1	垫圈10	Washer 10	3	3	3	3	3	3	3	3	3	3	3
17		复合垫圈22	Washer 22	2	2	2	2	2	2	2	2	2	2	2
18	700.58.081	阀进出油软管	Oil pipe (in-output)	2	2	2	2	2	2	2	2	2	2	2
19	700.58.074	分配器接头焊合件	Joint weldment,distributor	1	1	1	1	1	1	1	1	1	1	1
20	GB/T3452.1	O型密封圈11.8×2.65	O-ring 11.8×2.65	1	1	1	1	1	1	1	1	1	1	1
21	GB/T93	垫圈8	Washer 8	2	2	2	2	2	2	2	2	2	2	2
22	GB/T5783	螺栓M8×25	Bolt M8×25	2	2	2	2	2	2	2	2	2	2	2





气制动装置总成(选装)  
 Pneumatic Braking System Assembly (optional)

气制动装置总成(选装)

Pneumatic Braking System Assembly (optional)

序号 Ser.No.	代号 Part No.	名称	Name	数量 Qty.										
				650	654	700	704	750	754	800	804	850	854	
1	700.80.021	空压机总成	Air compressor assembly	1	1	1	1	1	1	1	1	1	1	1
2	GB/T93	垫圈10	Washer 10	7	7	7	7	7	7	7	7	7	7	7
3	GB/T5783	螺栓M10×30	Bolt M10×30	4	4	4	4	4	4	4	4	4	4	4
4	700.80.011-1	空压机出气管总成	Air outlet pipe assembly ,air compressor	1	1	1	1	1	1	1	1	1	1	1
5	700.80.012	气制动阀进气管总成	Air oulet hose unit	1	1	1	1	1	1	1	1	1	1	1
6	700.80.210	孔管夹	Pipe ferrule	1	1	1	1	1	1	1	1	1	1	1
7	700.80.013	气制动阀出气管总成	Air inlet pipe assembly ,air compressor	1	1	1	1	1	1	1	1	1	1	1
8	GB/T5783	螺栓M10×25	Bolt M10×25	2	2	2	2	2	2	2	2	2	2	2
9	GB/T5783	螺栓M8×25	Bolt M8×25	8	8	8	8	8	8	8	8	8	8	8
10	700.80.015	贮气筒后支架焊合件	Rear bracket welding unit	1	1	1	1	1	1	1	1	1	1	1
11	GB/T93	垫圈8	Washer 8	8	8	8	8	8	8	8	8	8	8	8
12	GB/T6170	螺母M8	Nut 8	4	4	4	4	4	4	4	4	4	4	4
13	700.80.016	安全阀总成	Safety valve assembly	1	1	1	1	1	1	1	1	1	1	1
14	700.80.017	贮气筒焊合件	Air vessel welding unit	1	1	1	1	1	1	1	1	1	1	1
15	700.80.019	放水阀总成	Water drain valve assembly	1	1	1	1	1	1	1	1	1	1	1
16	700.80.014-2	贮气筒前支架焊合件	Front bracket valve assembly	1	1	1	1	1	1	1	1	1	1	1
17	700.80.010	气制动阀总成	Pneumatic braking valve assembly	1	1	1	1	1	1	1	1	1	1	1
18	GB/T882	销轴B10×26	Pin roll B10×26	1	1	1	1	1	1	1	1	1	1	1
19	GB/T91	开口销3.2×20	Split pin 3.2×20	1	1	1	1	1	1	1	1	1	1	1
20	700.80.020	连接叉焊合件	Connecting fork weldment	1	1	1	1	1	1	1	1	1	1	1
21	GB/T6170	螺母M10	Nut M10	2	2	2	2	2	2	2	2	2	2	2
22	700.80.120	制动总泵推杆	Push rod ,main braking pump	1	1	1	1	1	1	1	1	1	1	1
23	700.80.123	连接销	Joint pin	1	1	1	1	1	1	1	1	1	1	1

**黄海金马-65~85 系列轮式拖拉机零件图册**

**HHJM 65-85 SERIES WHEELED TRACTOR PARTS CATALOGUE**

**黄海金马-650/654/700/704/750/754/800/804/850/854 型**

**HHJM - 650/654/700/704/750/754/800/804/850/854 MODEL**

**技术部 主编**

**Technology Department Editor-in-chief**

**马恒达悦达(盐城)拖拉机有限公司**

**Mahindra Yueda(Yancheng) Tractor Co., Ltd.**

\* \* \*

**开本: 787×1092 1/16 编号: Z02-04-001**

**PAPER SIZE: 787×1092 1/16 CODE: Z02-04-001**

**2010 年第 2 版 2011 年 1 月第 1 次印刷**

**2010 SECOND EDITION JANUARY, 2011 1st PRINTING**



马恒达悦达(盐城)拖拉机有限公司  
Mahindra Yueda (Yancheng) Tractor Co., Ltd.

地址: 江苏省盐城经济开发区嫩江路9号

Address: No.9 Nengjiang Road, Yancheng economic  
development zone, Jiangsu province.

电话 Tel: (0515) 88260118 (总机 Telephone exchange) 88231352

传真 Fax: (0515) 88231121 邮编 Zip code: 224002

Http://www.jm-tractor.com

E-mail: tractor@yantuo.cn  
jsb@yantuo.cn