

电器系统总成 (一)

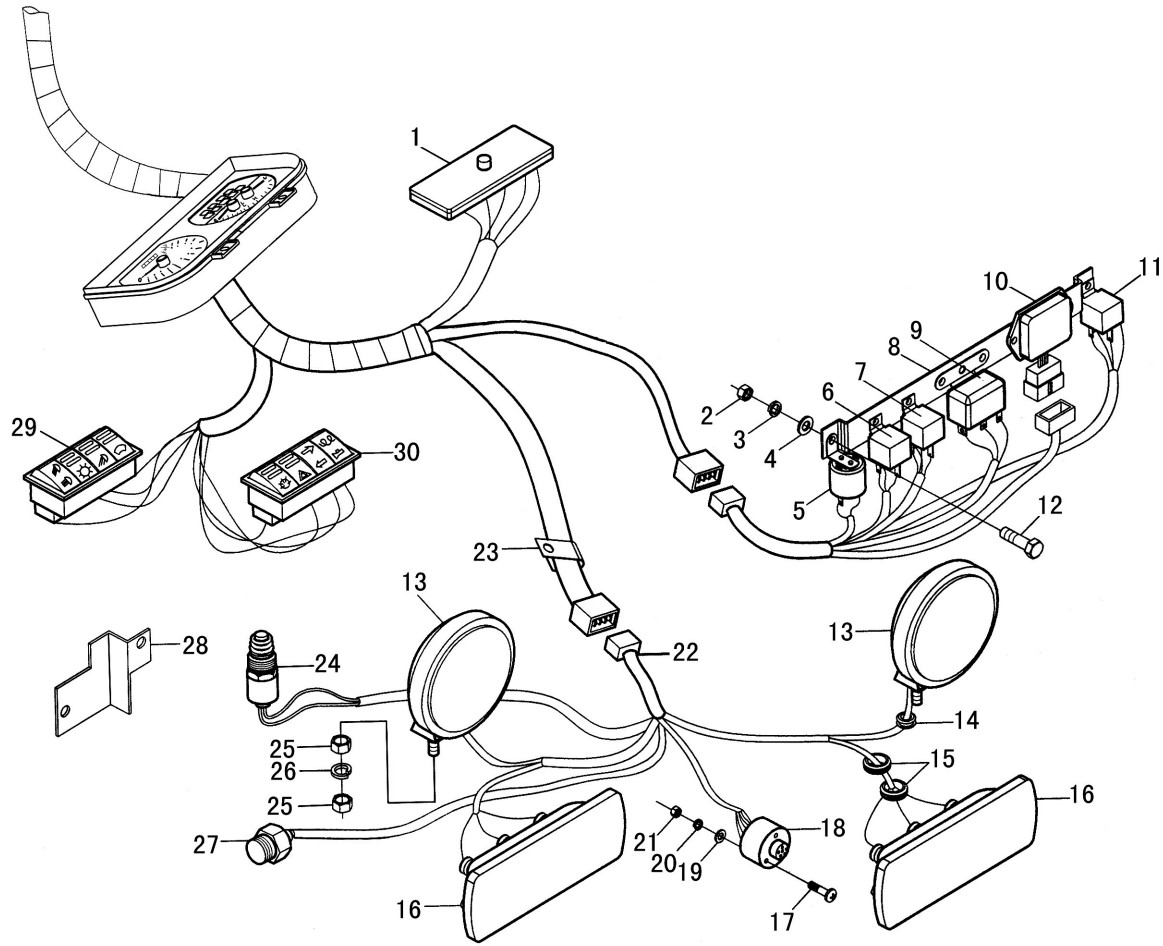
Electrical System Assembly(I)

序号 Ser.No.	代号 Part No.	名称	Name	数量 Qty.										
				650	654	700	704	750	754	800	804	850	854	
1	700.48.040	组合仪表总成	Combination instrument assembly	1	1	1	1	1	1	1	1	1	1	1
	C110-021	组合仪表(新通达130齿)	Combination instrument assembly	1	1	1	1	1	1	1	1	1	1	1
	C110-003	组合仪表(济宁130齿)	Combination instrument assembly	1	1	1	1	1	1	1	1	1	1	1
2	C402-003	点火锁JK290A(中文)	Ignition lock JK290A	1	1	1	1	1	1	1	1	1	1	1
	C402-0031	点火锁JK290A(英文)	Ignition lock JK290A	1	1	1	1	1	1	1	1	1	1	1
3	700.48.026-2	传感器线束总成(内销)	Engine barness assembly	1	1	1	1	1	1	1	1	1	1	1
	700.48.026-2A	传感器线束总成(外销)	Engine barness assembly	1	1	1	1	1	1	1	1	1	1	1
	700.48.026-2B	传感器线束总成(整体式发电机)	Engine barness assembly	1	1	1	1	1	1	1	1	1	1	1
4	C303-001	油压报警器(新通达)	Pressure alam	1	1	1	1	1	1	1	1	1	1	1
	C303-005	油压报警器(济宁)	Pressure alam	1	1	1	1	1	1	1	1	1	1	1
5	700.48.033	气压报警线	Wire for alam	1	1	1	1	1	1	1	1	1	1	1
6	C301-003	水温传感器(新通达)	Water temperature sensor WDG1371	1	1	1	1	1	1	1	1	1	1	1
	C301-008	水温传感器(济宁)	Water temperature sensor WDG1371	1	1	1	1	1	1	1	1	1	1	1
7	GB/T818	螺钉M4×6	Screw M4×6	5	5	5	5	5	5	5	5	5	5	5
8	GB/T93	垫圈4	Washer 4	5	5	5	5	5	5	5	5	5	5	5
9	700.48.021	主线束总成(内销)	Body harness assembly	1	1	1	1	1	1	1	1	1	1	1
	700.48.021A	主线束总成(外销)	Body harness assembly	1	1	1	1	1	1	1	1	1	1	1
	700.48.021B	主线束总成(整体式发电机)	Body harness assembly	1	1	1	1	1	1	1	1	1	1	1
10	C302-012	燃油传感器(新通达)	Fuel sensor RG1163S	1	1	1	1	1	1	1	1	1	1	1
	C302-011	燃油传感器(济宁)	Fuel sensor RG1163S	1	1	1	1	1	1	1	1	1	1	1
11	C304-005	转速传感器(新通达)	Speed sensor ZG255C	1	1	1	1	1	1	1	1	1	1	1
	C304-008	转速传感器(济宁)	Speed sensor ZG255C	1	1	1	1	1	1	1	1	1	1	1
12		起动电动机QD141G	Stater QD141G	1	1	1	1	1	1	1	1	1	1	1
13		交流发电机JF1521B	Alternator JF1521B	1	1	1	1	1	1	1	1	1	1	1
14	GB/T5783	螺栓M6×20	Bolt M6×20	5	5	5	5	5	5	5	5	5	5	5
15	GB/T93	垫圈6	Washer 6	5	5	5	5	5	5	5	5	5	5	5

续. 电器系统总成 (一)

Cont. Electrical System Assembly(I)

序号 Ser.No.	代号 Part No.	名称	Name	数量 Qty.										
				650	654	700	704	750	754	800	804	850	854	
40	GB/T6170	螺母M8	Nut M8	1	1	1	1	1	1	1	1	1	1	1
41	GB/T6170	1型六角螺母M5	Hexagon nut ,style 1	28	28	28	28	28	28	28	28	28	28	28
42	GB/T93	垫圈5	Washer	28	28	28	28	28	28	28	28	28	28	28
43	GB/T97.1	垫圈5	Washer	1	1	1	1	1	1	1	1	1	1	1
44	700.48.022	前大灯线束总成	Harness assembly ,front lamp	1	1	1	1	1	1	1	1	1	1	1
45	C202-009	右扶手灯总成	Right armrest lamp assembly	1	1	1	1	1	1	1	1	1	1	1
46	C202-009	左扶手灯总成	Left armrest lamp assembly	1	1	1	1	1	1	1	1	1	1	1
47	GB/T5783	螺栓M8*40	Hexagon head bolt	2	2	2	2	2	2	2	2	2	2	2
48	GB/T93	垫圈8	Washer	4	4	4	4	4	4	4	4	4	4	4
49	GB/T97.1	垫圈8	Washer	4	4	4	4	4	4	4	4	4	4	4
50	700.48.118	电器绝缘板	Fender	1	1	1	1	1	1	1	1	1	1	1
51	700.45.015	仪表板总成	Panel assembly	1	1	1	1	1	1	1	1	1	1	1
52	GB/T818	十字槽盘头螺钉	Crosc recessed pan head screw	1	1	1	1	1	1	1	1	1	1	1
53	700.48.116-1	电瓶右拉杆	Right Pull Rod , battery	1	1	1	1	1	1	1	1	1	1	1
54	700.48.024-2	起动机至电源总开关电缆总成	Cable	1	1	1	1	1	1	1	1	1	1	1
55	GB/T5783	螺栓M8*30	Bolt M8×30	2	2	2	2	2	2	2	2	2	2	2
56	C402-018	电源总开关	power supply switch	1	1	1	1	1	1	1	1	1	1	1
57	GB/T6170	螺母M8	Nut M8	4	4	4	4	4	4	4	4	4	4	4
58	GB/T93	垫圈8	Washer8	4	4	4	4	4	4	4	4	4	4	4
59	GB/T97.1	垫圈8	Washer8	4	4	4	4	4	4	4	4	4	4	4
60	GB/T5783	螺栓M8*25	Bolt M8×25	2	2	2	2	2	2	2	2	2	2	2
61	250.48.505	接线柱橡胶套	latex convention	2	2	2	2	2	2	2	2	2	2	2
62	700.48.036	电源总开关支架焊合件	bracket jointing piece	1	1	1	1	1	1	1	1	1	1	1

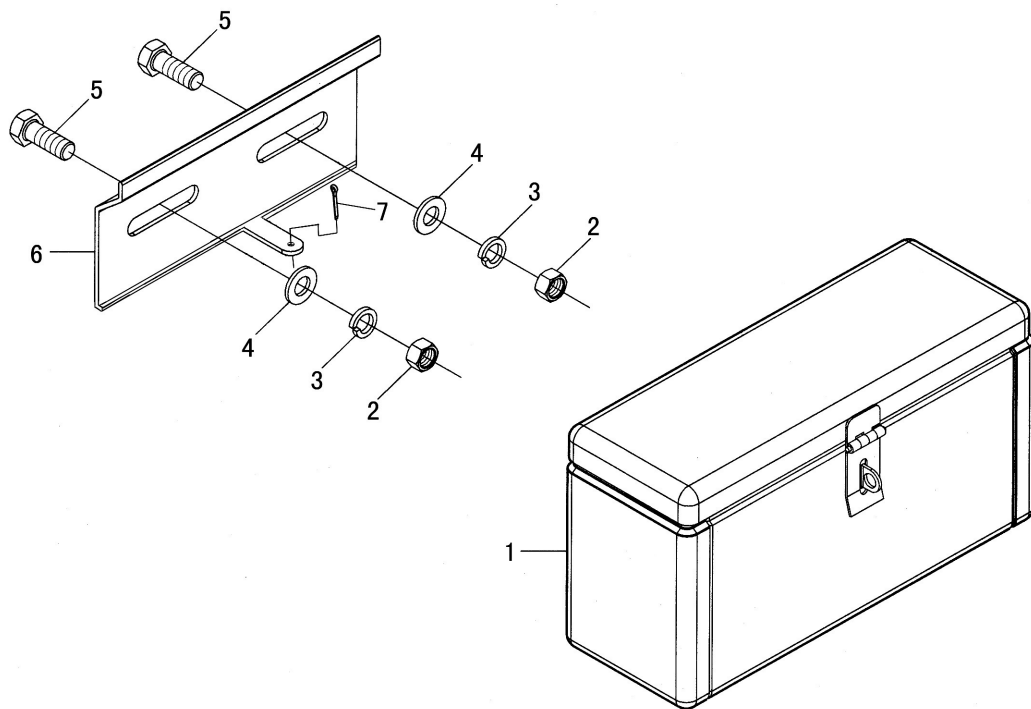


电器系统总成 (二)
Electrical System Assembly (II)

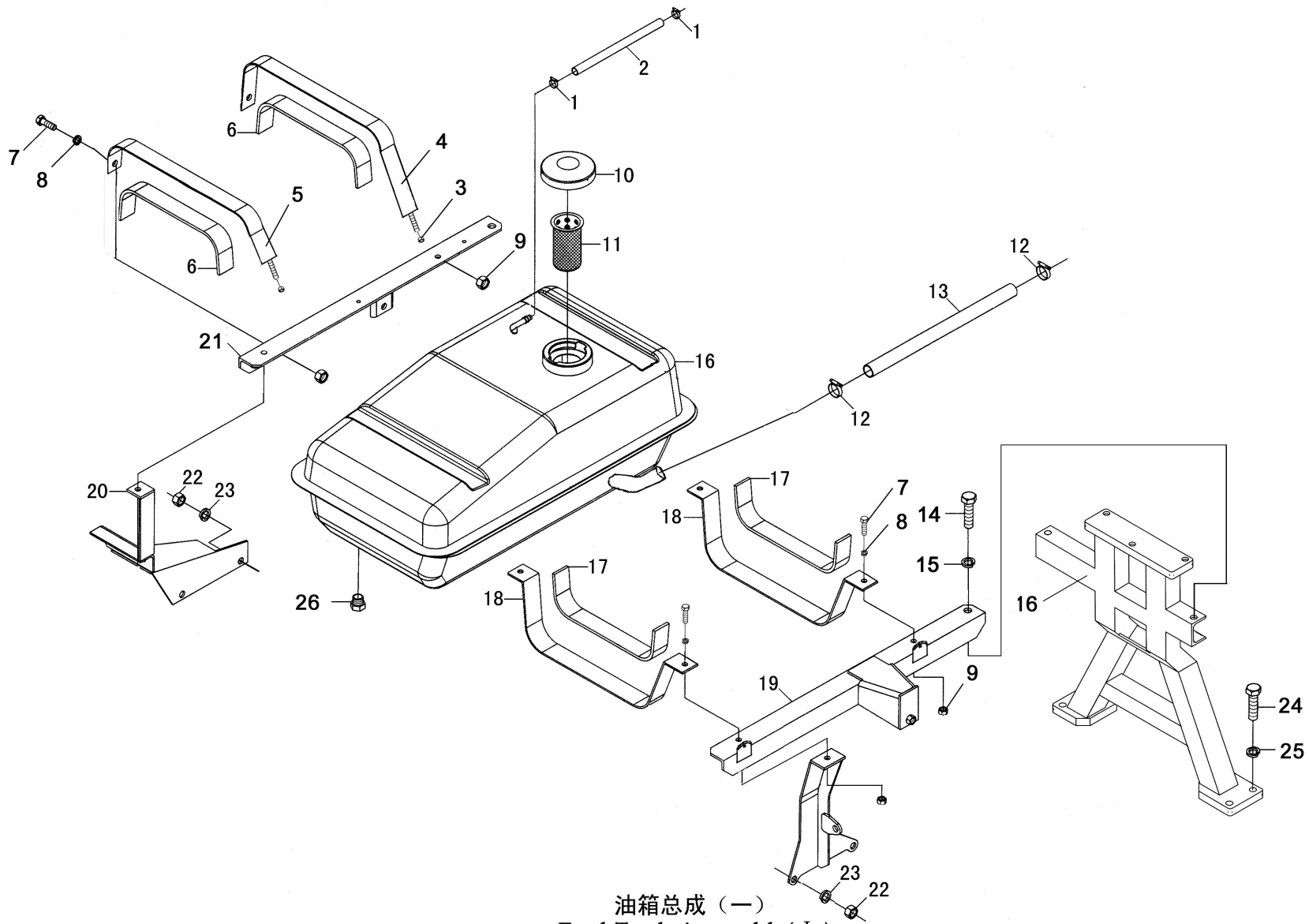
电器系统总成 (二)

Electrical System Assembly(II)

序号 Ser.No.	代号 Part No.	名称	Name	数量 Qty.										
				650	654	700	704	750	754	800	804	850	854	
1	C702-BX-508	保险丝盒BX-508	Fuse boxBX-508	1	1	1	1	1	1	1	1	1	1	1
2	GB/T6170	螺母M6	Nut M6	2	2	2	2	2	2	2	2	2	2	2
3	GB/T93	垫圈6	Washer 6	8	8	8	8	8	8	8	8	8	8	8
4	GB/T97.1	垫圈6	Washer 6	8	8	8	8	8	8	8	8	8	8	8
5	C502-DL129	喇叭	Buzzer	1	1	1	1	1	1	1	1	1	1	1
6	C503-001	电子闪光器	Electronic flasher	1	1	1	1	1	1	1	1	1	1	1
7	C502-001	主电源继电器	Main power source relay	1	1	1	1	1	1	1	1	1	1	1
8	700.48.032	继电器安装支架总成	Bracket assembly ,relay	1	1	1	1	1	1	1	1	1	1	1
9	C502-002	启动继电器	Relay for starting	1	1	1	1	1	1	1	1	1	1	1
10	C501-002	电压调节器	Voltage adjuster	1	1	1	1	1	1	1	1	1	1	1
11	C502-001	灯光继电器	Light relay	1	1	1	1	1	1	1	1	1	1	1
12	GB/T5783	螺栓M6×20	Bolt M6×20	8	8	8	8	8	8	8	8	8	8	8
13	C202-002	后尾灯总成	Rear tail lamp assembly	2	2	2	2	2	2	2	2	2	2	2
14	700.48.094	穿线胶圈 (二)	Rubber ring (2)	10	10	10	10	10	10	10	10	10	10	10
15	700.48.092	穿线胶圈 (三)	Rubber ring (3)	4	4	4	4	4	4	4	4	4	4	4
16	C203-003	后照灯总成	Rear light assembly	2	2	2	2	2	2	2	2	2	2	2
17	GB/T818	螺钉M5×35	Screw M5×35	3	3	3	3	3	3	3	3	3	3	3
18	C604-011	后挂车插座	Socket ,rear trailer	1	1	1	1	1	1	1	1	1	1	1
19	GB/T97.1	垫圈5	Washer 5	3	3	3	3	3	3	3	3	3	3	3
20	GB/T93	垫圈5	Washer 5	3	3	3	3	3	3	3	3	3	3	3
21	GB/T6170	螺母M5	Nut M5	3	3	3	3	3	3	3	3	3	3	3
22	700.48.023	后灯线束总成	Harness assembly ,rear lamp	1	1	1	1	1	1	1	1	1	1	1
23	160.48.130	电缆线固定卡	Harness tighten keeper(1)	13	13	13	13	13	13	13	13	13	13	13



工具箱总成
Tool Box Assembly



油箱总成 (一)
Fuel Tank Assembly(I)

油箱总成 (一)

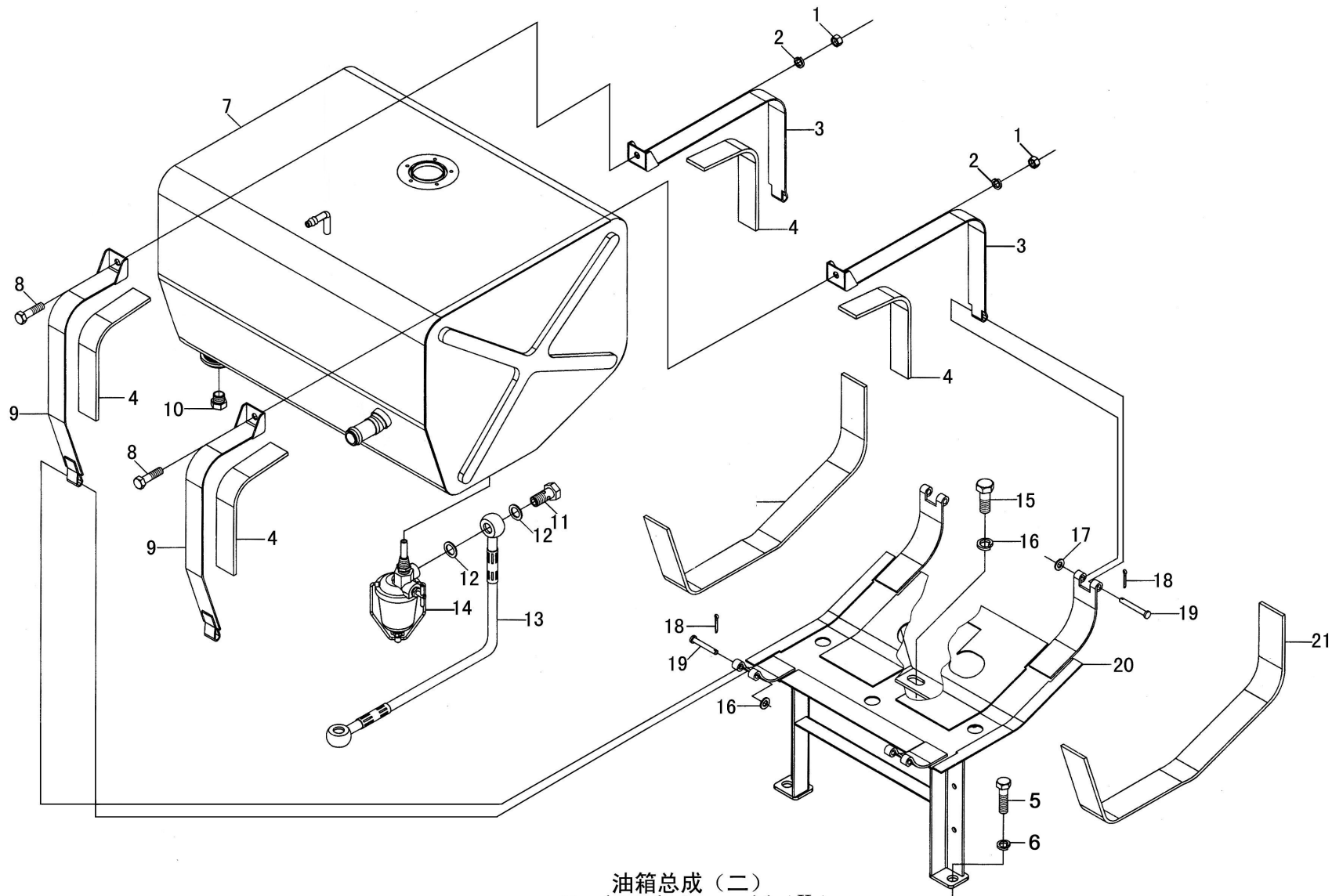
Fuel Tank Assembly(I)

序号 Ser.No.	代号 Part No.	名称	Name	数量 Qty.										
				650	654	700	704	750	754	800	804	850	854	
1	ZBJ15001	喉箍20	Hoop 20	2	2	2	2	2	2	2	2	2	2	2
2	700.50.202	排气管	Exhaust pipe	1	1	1	1	1	1	1	1	1	1	1
3	GB/T889	螺母M8	Nut M8	2	2	2	2	2	2	2	2	2	2	2
4	700.50.039	后箍带焊合件	Front binding strip weldment	1	1	1	1	1	1	1	1	1	1	1
5	700.50.038	前箍带焊合件	After binding strip weldment	1	1	1	1	1	1	1	1	1	1	1
6	700.50.209	上毛毡条	Upper felt strip	2	2	2	2	2	2	2	2	2	2	2
7	GB/T5783	螺栓M8×25	Bolt M8×25	4	4	4	4	4	4	4	4	4	4	4
8	GB/T93	垫圈8	Washer 8	4	4	4	4	4	4	4	4	4	4	4
9	GB/T6170	螺母M8	Nut M8	1	1	1	1	1	1	1	1	1	1	1
10	550.50.041	油箱加注口盖总成	Oil filler cap assembly	1	1	1	1	1	1	1	1	1	1	1
11	700.50.023	滤网总成	Filter screen assembly	1	1	1	1	1	1	1	1	1	1	1
12	ZBJ15001	喉箍22~32	Hoop 22~32	2	2	2	2	2	2	2	2	2	2	2
13	700.50E.212	夹布输油胶管	Oil supply hose	1	1	1	1	1	1	1	1	1	1	1
14	GB/T5783	螺栓M12×25	Bolt M12×25	2	2	2	2	2	2	2	2	2	2	2
15	GB/T93	垫圈12	Washer 12	2	2	2	2	2	2	2	2	2	2	2
16	700.50.021-1	副油箱焊合	Auxiliary fuel tank weldment	1	1	1	1	1	1	1	1	1	1	1
17	700.50.027	下毛毡条	Lower felt strip	2	2	2	2	2	2	2	2	2	2	2
18	700.50.208-1	副油箱托板	Support plate of auxiliary fuel tank	2	2	2	2	2	2	2	2	2	2	2
19	700.50.026-2	气弹簧左支架焊合	Left bracket weldment	1	1	1	1	1	1	1	1	1	1	1
20	700.50.025	副油箱右前支架焊合	Right front bracket ,auxiliary fuel tank	1	1	1	1	1	1	1	1	1	1	1
19	700.50.027-1	气弹簧右支架焊合	Right bracket weldment	1	1	1	1	1	1	1	1	1	1	1
22	GB/T6170	螺母M10	Nut M10	4	4	4	4	4	4	4	4	4	4	4
23	GB/T93	垫圈10	Washer 10	4	4	4	4	4	4	4	4	4	4	4

续. 油箱总成 (一)

Cont. Fuel Tank Assembly (I)

序号 Ser.No.	代号 Part No.	名称	Name	数量 Qty.										
				650	654	700	704	750	754	800	804	850	854	
24	GB/T5783	螺栓M12×35	Bolt M12×35	4	4	4	4	4	4	4	4	4	4	4
25	GB/T93	垫圈12	Washer 12	4	4	4	4	4	4	4	4	4	4	4
26	QC/T381	螺塞Z 1/4"	Plug Z 1/4"	1	1	1	1	1	1	1	1	1	1	1

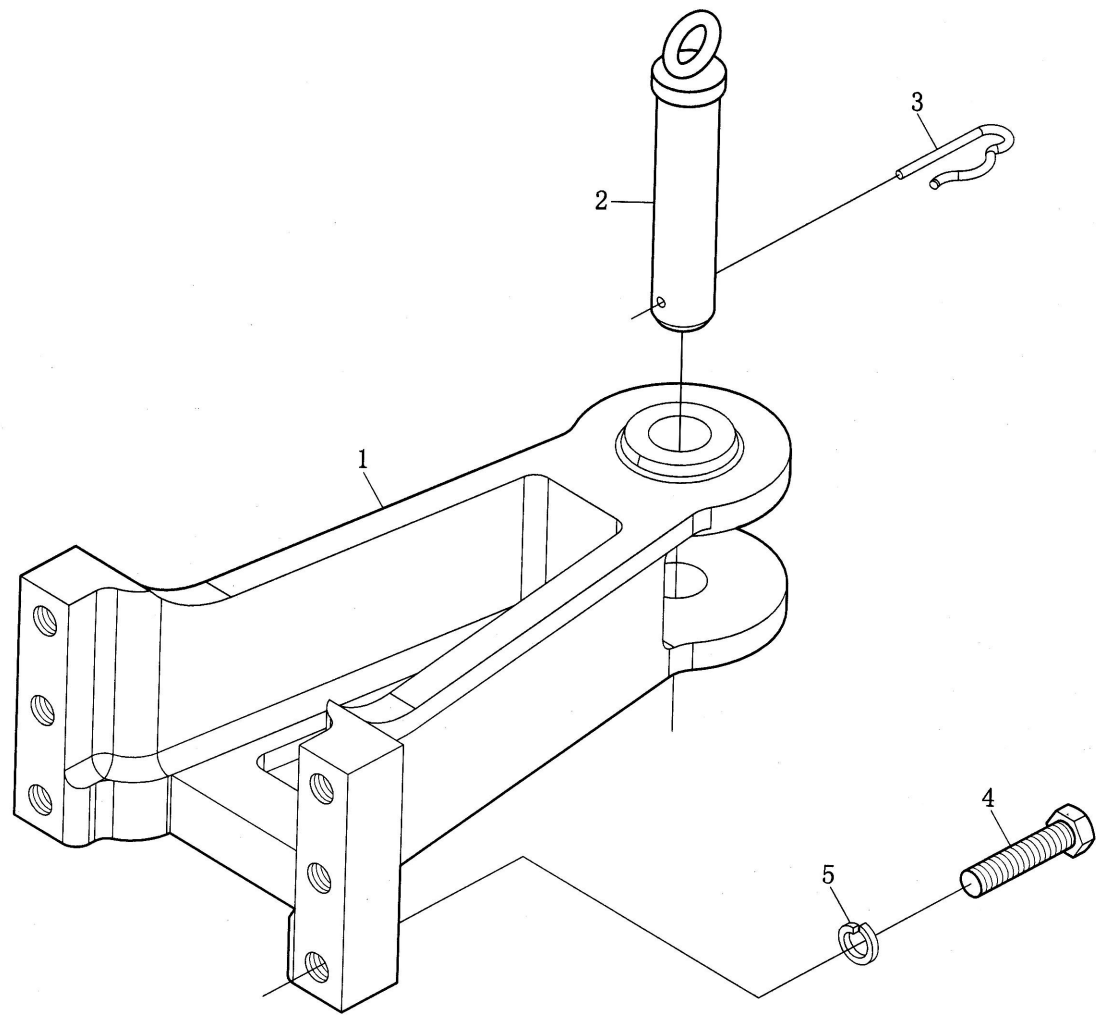


油箱总成 (二)
 Fuel tank Assembly(II)

油箱总成 (二)

Fuel Tank Assembly(II)

序号 Ser.No.	代号 Part No.	名称	Name	数量 Qty.										
				650	654	700	704	750	754	800	804	850	854	
1	GB/T6170	螺母M10	Bolt M10	2	2	2	2	2	2	2	2	2	2	2
2	GB/T93	垫圈10	Washer 10	2	2	2	2	2	2	2	2	2	2	2
3	700.50.037	扎紧带 (二) 合件	Binding strip unit (2)	2	2	2	2	2	2	2	2	2	2	2
4	700.50.103	主油箱上毛毡条145×30×5	Main fuel tank upper felt strip 145×30×5	4	4	4	4	4	4	4	4	4	4	4
5	GB/T5783	螺栓M12×25	Bolt M12×25	1	1	1	1	1	1	1	1	1	1	1
6	GB/T93	垫圈12	Washer 12	2	2	2	2	2	2	2	2	2	2	2
7	700.50.031-1	主油箱焊合件	Main fuel tank weldment	1	1	1	1	1	1	1	1	1	1	1
8	GB/T5783	螺栓M10×40	Bolt M10×40	2	2	2	2	2	2	2	2	2	2	2
9	700.50.036	扎紧带 (一) 合件	Binding strip unit (1)	2	2	2	2	2	2	2	2	2	2	2
10	QC/T381	螺塞Z 1/4"	Plug Z 1/4"	1	1	1	1	1	1	1	1	1	1	1
11	700.50.106	空心螺栓	Hollow bolt	1	1	1	1	1	1	1	1	1	1	1
12	700.50.107	铝垫	Aluminium washer	2	2	2	2	2	2	2	2	2	2	2
13	700.50.034	输油管总成	Fuel transfer pipe assembly	1	1	1	1	1	1	1	1	1	1	1
14	700.50.033	沉淀杯总成	Settling bowl assembly	1	1	1	1	1	1	1	1	1	1	1
15	700.50.104	主油箱下毛毡条600×30×5	Lower felt strip 600×30×5	2	2	2	2	2	2	2	2	2	2	2
16	GB/T5783	螺栓M14×20	Bolt M14×20	2	2	2	2	2	2	2	2	2	2	2
17	GB/T93	垫圈14	Washer 14	2	2	2	2	2	2	2	2	2	2	2
18	GB/T97.1	垫圈6	Washer 6	4	4	4	4	4	4	4	4	4	4	4
19	GB/T91	销2×12	Pin 2×12	4	4	4	4	4	4	4	4	4	4	4
20	GB/T882	销轴B6×48	Clevis pin with B6×48	4	4	4	4	4	4	4	4	4	4	4
21	700.50.032	主油箱支架焊合件	Bracket weldment ,main fuel tank	1	1	1	1	1	1	1	1	1	1	1

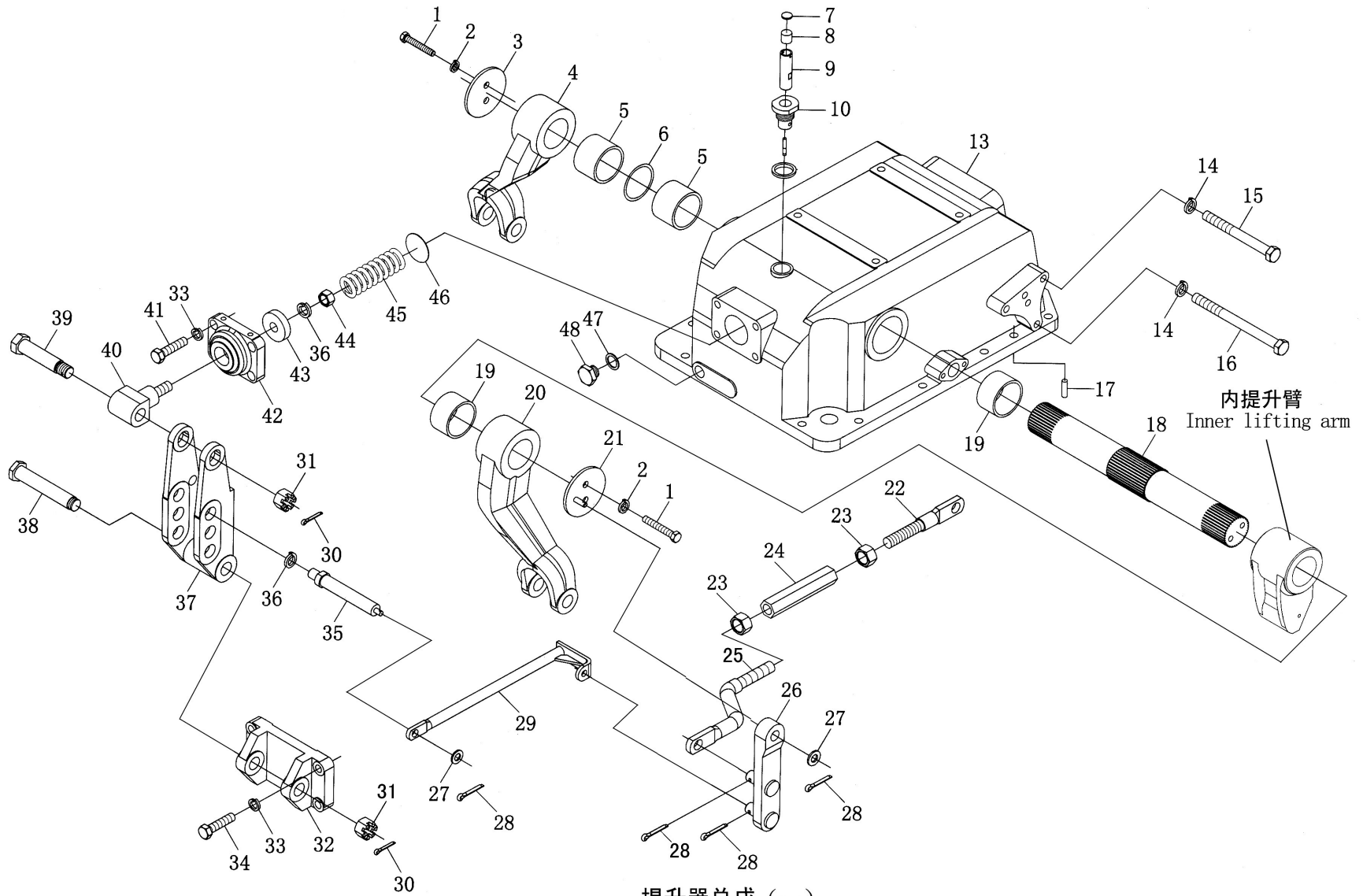


拖挂装置总成
Towing Mechanism Assembly

拖挂装置总成

Towing Mechanism Assembly

序号 Ser.No.	代号 Part No.	名称	Name	数量 Qty.										
				700	704	750	754	750A	754A	800	804	850	854	
1	700.53.031	拖挂架	Towing frame	1	1	1	1	1	1	1	1	1	1	1
2	700.53.011	销轴焊合	Pin roll weldment	1	1	1	1	1	1	1	1	1	1	1
3	160.35.107	弹性锁销	Elastic latch	1	1	1	1	1	1	1	1	1	1	1
4	GB/T5783	螺栓M16×70	Bolt M16×70	6	6	6	6	6	6	6	6	6	6	6
5	GB/T93	垫圈16	Washer 16	6	6	6	6	6	6	6	6	6	6	6



内提升臂
Inner lifting arm

提升器总成 (一)
Lifter Assembly (I)

提升器总成 (一)

Lifter Assembly(I)

序号 Ser.No.	代号 Part No.	名称	Name	数量 Qty.										
				650	654	700	704	750	754	800	804	850	854	
1	GB/T5783	螺栓M10×20	Bolt M10×20	4	4	4	4	4	4	4	4	4	4	4
2	GB/T93-1987	垫圈10	Wahser 10	4	4	4	4	4	4	4	4	4	4	4
3	700.55.115	左提升臂压板	Pressure plate of left lifting arm	1	1	1	1	1	1	1	1	1	1	1
4	700.55.107A	外提升臂 (左)	Outer lifting arm (left)	1	1	1	1	1	1	1	1	1	1	1
5	700.55.116	铜轴套	Copper sleeve	4	4	4	4	4	4	4	4	4	4	4
6	GB 3452.1	O形密封圈55×5.3	O-seal ring 55×5.3	2	2	2	2	2	2	2	2	2	2	2
7	700.55.129	堵头	Plug	1	1	1	1	1	1	1	1	1	1	1
8	700.55.133	海棉	Sponge	1	1	1	1	1	1	1	1	1	1	1
9	700.55.130	通气筒	Vent pipe	1	1	1	1	1	1	1	1	1	1	1
10	700.55.131	加油盖芯	Core,oil filler	1	1	1	1	1	1	1	1	1	1	1
11	700.55.132	油尺	Dipstick	1	1	1	1	1	1	1	1	1	1	1
12	700.55.128	铝垫	Aluminium washer	1	1	1	1	1	1	1	1	1	1	1
13	700.55.110B	提升器壳体	Lifter housing	1	1	1	1	1	1	1	1	1	1	1
14	GB/T93	垫圈8	Single coil spring lock washer 8	3	3	3	3	3	3	3	3	3	3	3
15	700.55.127	螺栓	Bolt	2	2	2	2	2	2	2	2	2	2	2
16	700.55.126	螺栓	Bolt	1	1	1	1	1	1	1	1	1	1	1
17	GB/T119	圆柱销B12×24	Parallel pin B12×24	2	2	2	2	2	2	2	2	2	2	2
18	700.55.108	提升轴	Lifting shaft	1	1	1	1	1	1	1	1	1	1	1
19	700.55.114	套筒	Sleeve	2	2	2	2	2	2	2	2	2	2	2
20	700.50.162	外提升臂 (右)	Outer lifting arm (right)	1	1	1	1	1	1	1	1	1	1	1
21	700.55.017	右提升臂压板焊合	Pressure plate welding , rihgt lifting arm	1	1	1	1	1	1	1	1	1	1	1
22	700.55.125A	前调节杆	Front adjusting rod	1	1	1	1	1	1	1	1	1	1	1
23	GB/T6170	螺母M8	Nut M8	2	2	2	2	2	2	2	2	2	2	2

续. 提升器总成 (一)

Cont.Lifter Assembly(I)

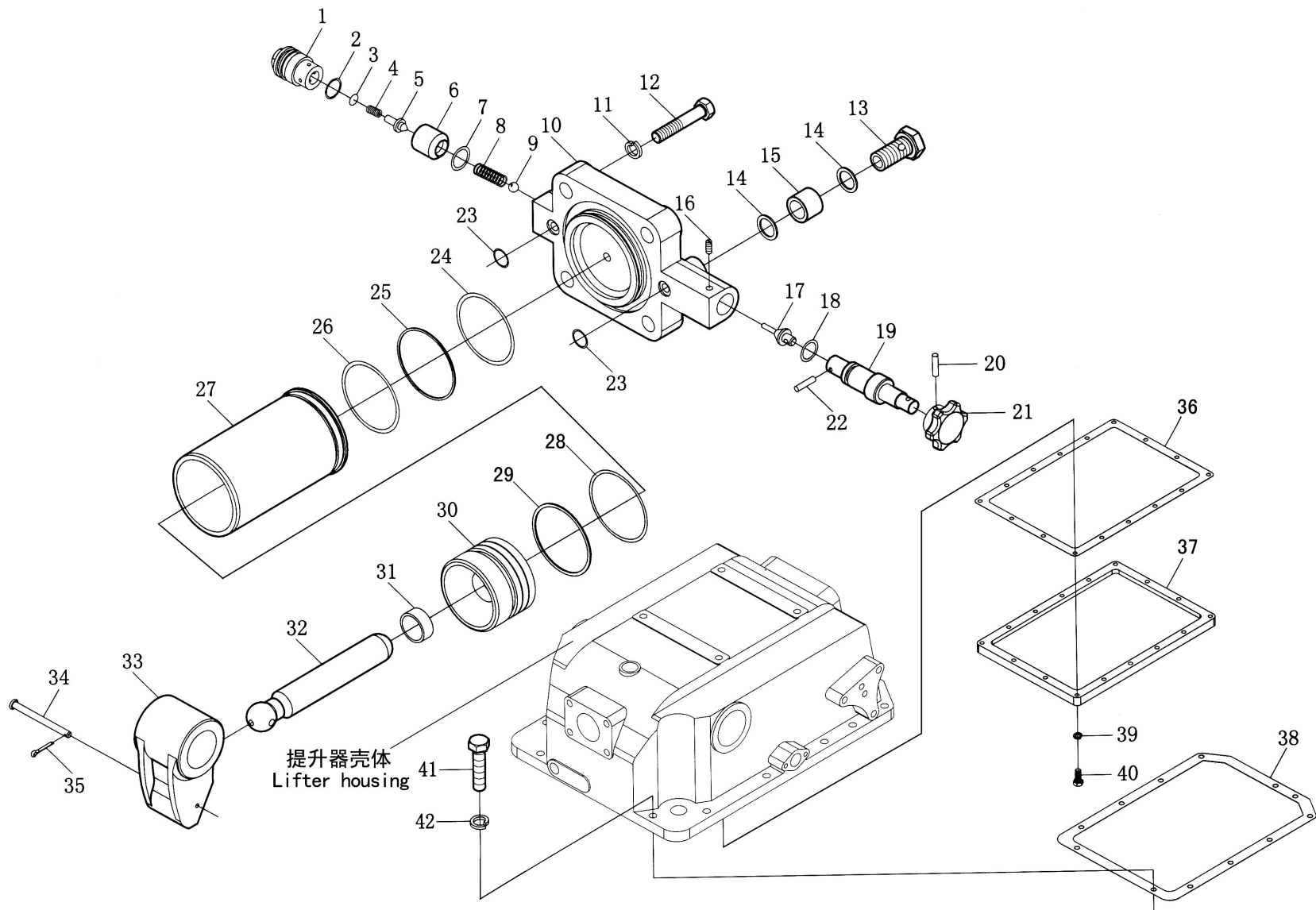
序号 Ser.No.	代号 Part No.	名称	Name	数量 Qty.										
				650	654	700	704	750	754	800	804	850	854	
24	700.55.123A	调节螺套	Adjusting screw sleeve	1	1	1	1	1	1	1	1	1	1	1
25	700.55.124A	后调节杆	Rear adjusting rod	1	1	1	1	1	1	1	1	1	1	1
26	700.55.016	中间臂焊合总成	Middle arm welding assembly	1	1	1	1	1	1	1	1	1	1	1
27	GB/T97.1	垫圈8	Washer 8	3	3	3	3	3	3	3	3	3	3	3
28	GB/T91	销2×14	Pin 2×14	4	4	4	4	4	4	4	4	4	4	4
29	700.55.015A	连接杆焊合总成	Connecting rod welding assemblby	1	1	1	1	1	1	1	1	1	1	1
30	GB/T91	销4×36	Pin 4×36	2	2	2	2	2	2	2	2	2	2	2
31	GB/T6181	螺母M20	Nut M20	2	2	2	2	2	2	2	2	2	2	2
32	700.55.119	上拉杆支座	Bracket ,upper pull rod	1	1	1	1	1	1	1	1	1	1	1
33	GB/T93	垫圈12	Washer 12	8	8	8	8	8	8	8	8	8	8	8
34	GB/T5783	螺栓M12×40	Bolt M12×40	4	4	4	4	4	4	4	4	4	4	4
35	700.55.122	销	Pin	1	1	1	1	1	1	1	1	1	1	1
36	GB/T93	垫圈16	Washer 16	2	2	2	2	2	2	2	2	2	2	2
37	700.55.101	连接架	Connecting bracket	1	1	1	1	1	1	1	1	1	1	1
38	700.55.120	连接螺栓	Connecting bolt	1	1	1	1	1	1	1	1	1	1	1
39	700.55.121	螺栓	Bolt	1	1	1	1	1	1	1	1	1	1	1
40	700.55.102	力调节传感接头	Sensor joint for force adjust	1	1	1	1	1	1	1	1	1	1	1
41	GB/T5783	螺栓M12×35	Bolt M12×35	4	4	4	4	4	4	4	4	4	4	4
42	700.55.103	弹簧座	Spring seat	1	1	1	1	1	1	1	1	1	1	1
43	700.55.104	弹簧压板	Pressure washer for spring	1	1	1	1	1	1	1	1	1	1	1
44	GB/T6171	螺母M16×1.5	Bolt M16×1.5	1	1	1	1	1	1	1	1	1	1	1
45	700.55.105	力调节弹簧	Spring for force adjust	1	1	1	1	1	1	1	1	1	1	1

△适量 Just amout

续. 提升器总成 (一)

Cont.Lifter Assembly(I)

序号 Ser.No.	代号 Part No.	名称	Name	数量 Qty.										
				650	654	700	704	750	754	800	804	850	854	
46	700.55.106	调整垫片	Adjusting shim	△	△	△	△	△	△	△	△	△	△	△
47	700.55.118	铝垫	Aluminium washer	1	1	1	1	1	1	1	1	1	1	1
48	700.55.117	放油螺塞	Oil drain plug	1	1	1	1	1	1	1	1	1	1	1
△适量 Just amout														



提升器总成 (二)
Lifter Assembly(II)

提升器总成 (二)

Lifter Assembly(II)

序号 Ser.No.	代号 Part No.	名称	Name	数量 Qty.										
				650	654	700	704	750	754	800	804	850	854	
1	700.55.149	安全阀螺塞	Plug ,safety valve	1	1	1	1	1	1	1	1	1	1	1
2	GB3452.1	O形密封圈23.6×2.65	O-seal ring 23.6×2.65	1	1	1	1	1	1	1	1	1	1	1
3	700.55.148	调整垫片	Adjusting shim	△	△	△	△	△	△	△	△	△	△	△
4	700.55.147	安全阀弹簧	Spring ,safety valve	1	1	1	1	1	1	1	1	1	1	1
5	700.55.146	油缸安全阀体	Safety valve body, cylinder	1	1	1	1	1	1	1	1	1	1	1
6	700.55.145	安全阀座	Safety valve seat	1	1	1	1	1	1	1	1	1	1	1
7	GB3452.1	O形密封圈19×2.65	O-seal ring 19×2.65	1	1	1	1	1	1	1	1	1	1	1
8	700.55.150	调节阀弹簧	Spring ,adjusting valve	1	1	1	1	1	1	1	1	1	1	1
9	GB/T308	钢球Φ12	Steel ball Φ12	1	1	1	1	1	1	1	1	1	1	1
10	700.55.144	油缸盖	Cylinder cover	1	1	1	1	1	1	1	1	1	1	1
11	GB/T93	垫圈18	Single coil spring lock washer 18	4	4	4	4	4	4	4	4	4	4	4
12	GB/T5785	螺栓M18×1.5×60	Bolt M18×1.5×60	4	4	4	4	4	4	4	4	4	4	4
13	700.55.152	空心螺栓	Hollow bolt	1	1	1	1	1	1	1	1	1	1	1
14	700.55.151	铝垫	Aluminium washer	2	2	2	2	2	2	2	2	2	2	2
15	700.55.153	隔套	Sleeve	1	1	1	1	1	1	1	1	1	1	1
16	GB/T71	螺钉M5×12	Screw M5×12	1	1	1	1	1	1	1	1	1	1	1
17	700.55.143	调节阀	Adjusting valve	1	1	1	1	1	1	1	1	1	1	1
18	GB3452.1	O形密封圈16×2.65	O-seal ring 16×2.65	1	1	1	1	1	1	1	1	1	1	1
19	700.55.141	调节杆	Adjusting rod	1	1	1	1	1	1	1	1	1	1	1
20	GB/T879	弹性圆柱销4×20	Spring -type straight pin 4×20	1	1	1	1	1	1	1	1	1	1	1
21	700.55.140	手轮	Handwhell	1	1	1	1	1	1	1	1	1	1	1
22	700.55.142	销	Pin	1	1	1	1	1	1	1	1	1	1	1

△适量 Just amount