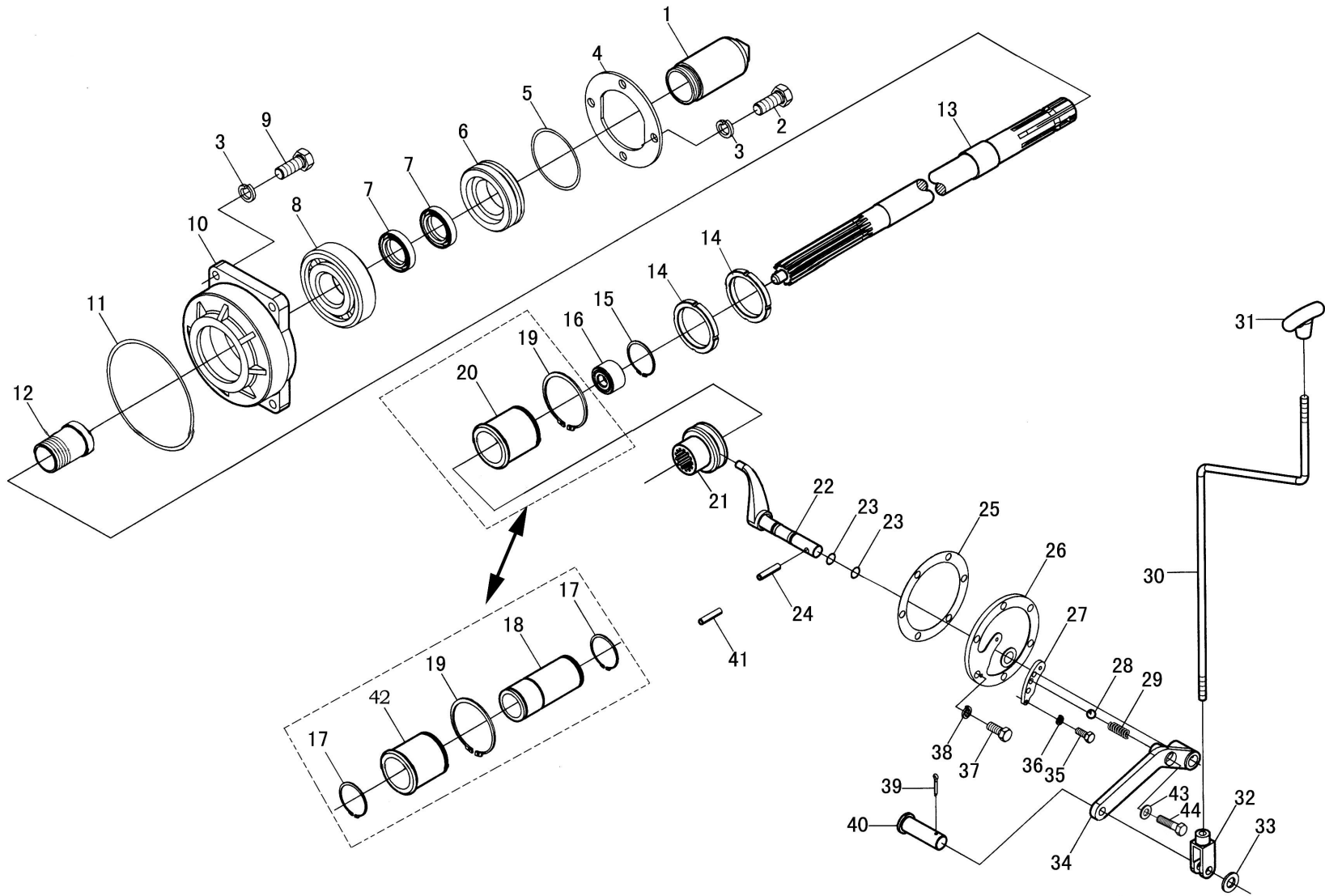


后桥总成 (一)

Rear Axle Assembly (I)

序号 Ser.No.	代号 Part No.	名称	Name	数量 Qty.										
				650	654	700	704	750	754	800	804	850	854	
1	GB/T5783	螺栓M10×30	Bolt M10×30	10	10	10	10	10	10	10	10	10	10	10
2	GB/T93	垫圈10	Washer 10	10	10	10	10	10	10	10	10	10	10	10
3	700.38.103-2	后上盖	Rear upper cover	1	1	1	1	1	1	1	1	1	1	1
4	700.38.104	后上盖纸垫	Gasket of rear upper cover	1	1	1	1	1	1	1	1	1	1	1
5	700.38.030	油尺总成	Dipstick assembly	1	1	1	1	1	1	1	1	1	1	1
6	700.38A.101	后桥壳体	Rear axle housing	1	1	1	1	1	1	1	1	1	1	1
	800.38.101B	后桥壳体	Rear axle housing	1										
7	700.38.220	防尘盖	Safety guard		1	1	1	1	1	1	1	1	1	1
8	GB/T6170	螺母M14	Nut M14	10	10	10	10	10	10	10	10	10	10	10
9	GB/T93	垫圈14	Washer 14	13	13	13	13	13	13	13	13	13	13	13
10	GB/T5783	螺栓M14×55	Bolt M14×55	2	2	2	2	2	2	2	2	2	2	2
11	GB/T27	铰制孔用螺栓M14×50	Bolt M14×50	2	2	2	2	2	2	2	2	2	2	2
12	GB/T5783	螺栓M14×40	Bolt M14×45	3	3	3	3	3	3	3	3	3	3	3
13	GB/T5783	螺栓M14×55	Bolt M14×55	6	6	6	6	6	6	6	6	6	6	6
14	JB/T982	复合垫圈20	Washer 20	2	2	2	2	2	2	2	2	2	2	2
15	400.38.114	放油螺塞	Drain screw	2	2	2	2	2	2	2	2	2	2	2
16	GB/T93	垫圈12	Washer 12	10	10	10	10	10	10	10	10	10	10	10
17	GB/T5783	螺栓M12×30	Bolt M12×30	4	4	4	4	4	4	4	4	4	4	4
18	GB 3452.1	O形密封圈132×3.55	O-seal ring 132×3.55	1	1	1	1	1	1	1	1	1	1	1
19	700.38.213-1	分动箱口盖	Cover of housing	1		1		1		1		1		
20	700.38.106-1	主动弧齿锥齿轮	Driving angle gear with cambered gear	1										
	800.38.106	主动弧齿锥齿轮	Driving angle gear with cambered gear		1	1	1	1	1	1	1	1	1	1



后桥总成 (二)
Rear Axle Assembly (II)

后桥总成 (二)

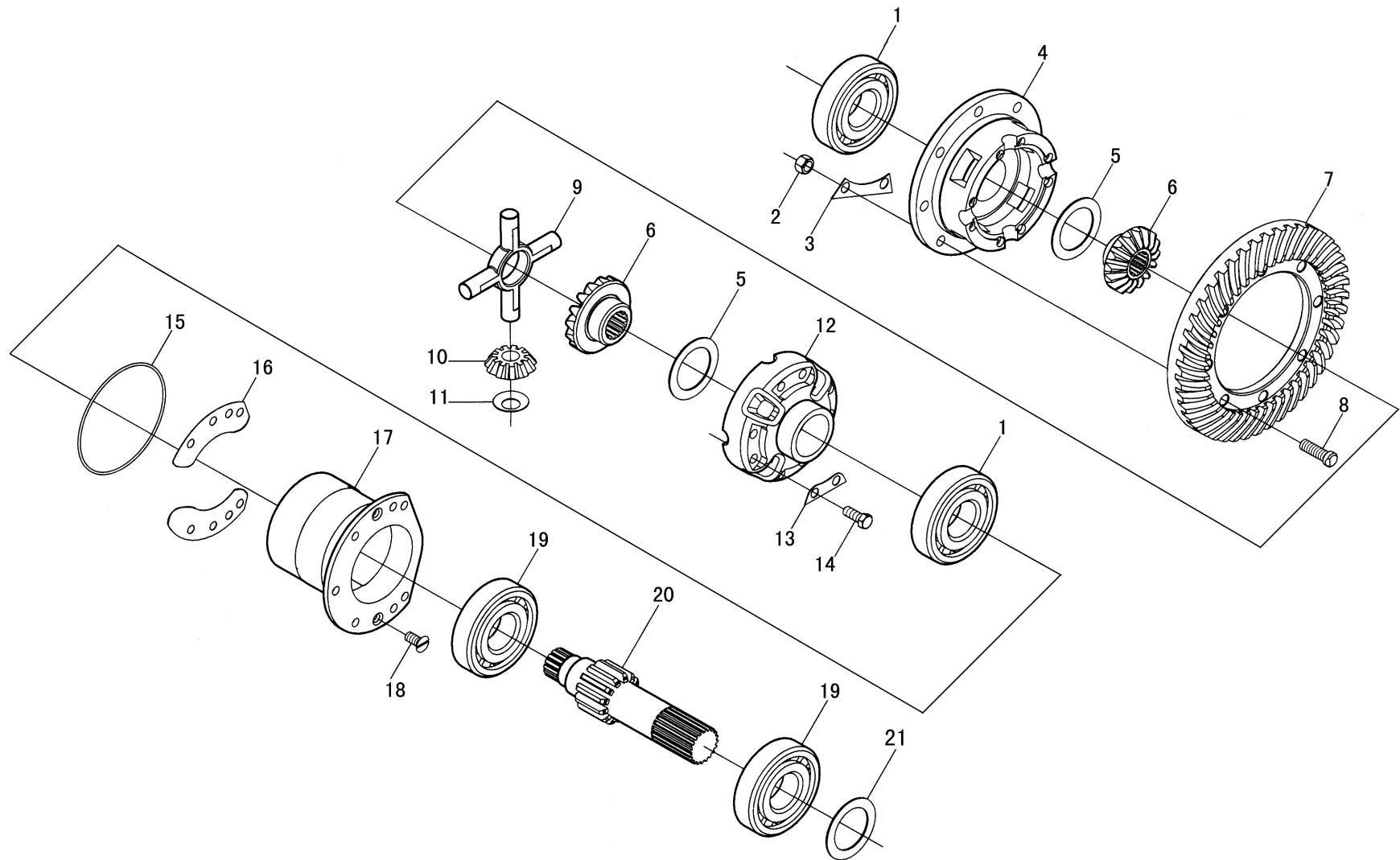
Rear Axle Assembly (II)

序号 Ser.No.	代号 Part No.	名称	Name	数量 Qty.										
				650	654	700	704	750	754	800	804	850	854	
1	700.38.162	防护罩	Safety guard	1	1	1	1	1	1	1	1	1	1	1
2	GB/T5783	螺栓M12×25	Bolt M12×25	4	4	4	4	4	4	4	4	4	4	1
3	GB/T93	垫圈12	Washer 12	8	8	8	8	8	8	8	8	8	8	1
4	700.38.160	压板	Pressure plate	1	1	1	1	1	1	1	1	1	1	1
5	GB 3452.1-1992	O形密封圈92×5.3	O-seal ring 92×5.3	1	1	1	1	1	1	1	1	1	1	1
6	700.38.161	挡座	Stop bush seat	1	1	1	1	1	1	1	1	1	1	1
7	GB/T9877.1	油封FB50×72×8	Oil sealing FB50×72×8	2	2	2	2	2	2	2	2	2	2	1
8	GB/T276	深沟球轴承6309	Deep groove ball bearing 6309	1	1	1	1	1	1	1	1	1	1	1
9	GB/T5783	螺栓M12×40	Bolt M12×40	4	4	4	4	4	4	4	4	4	4	11
10	700.38.159	轴承座	Bearing housing	1	1	1	1	1	1	1	1	1	1	1
11	GB 3452.1	O形密封圈170×5.3	O-seal ring 170×5.3	1	1	1	1	1	1	1	1	1	1	1
12	700.38.158	轴套	Shaft sleeve	1	1	1	1	1	1	1	1	1	1	1
13	700.38.156-1/156A-1	动力输出轴	PTO	1										
13	800.38.156/156A	动力输出轴	PTO		1	1	1	1	1	1	1	1	1	1
14	GB/T812	螺母M45×1.5	Round nut M45×1.5	2	2	2	2	2	2	2	2	2	2	1
15	GB/T895.1	孔用钢丝挡圈42	Roundwire snap ring for hole 42	1	1	1	1	1	1	1	1	1	1	1
16	GB/T12764	滚针轴承HK3542	Needle roller bearing HK3524	1	1	1	1	1	1	1	1	1	1	1
17	GB/T894.1	轴用弹性挡圈50	Circlip for shaft 50		2		2		2		2		2	
18	704.38.155	动力输出轴轴承座	Bearing housing of PTO		1		1		1		1		1	
19	GB/T894.1	轴用弹性挡圈65	Circlip for shaft 65	1		1		1		1		1		
20	700.38.155-1/155A	轴承座	Bearing housing	1		1		1		1		1		
21	700.38.157	传动齿轮连接套	Connecting sleeve for transmission gear	1	1	1	1	1	1	1	1	1	1	1
22	700.38.024	拨叉总成	Gear fork	1	1	1	1	1	1	1	1	1	1	1

续. 后桥总成 (二)

Cont. Rear Axle Assembly (II)

序号 Ser.No.	代号 Part No.	名称	Name	数量 Qty.									
				650	654	700	704	750	754	800	804	850	854
23	GB 3452.1	O形密封圈13.2×2.65	O-seal ring 13.2×2.65	2	2	2	2	2	2	2	2	2	2
24	GB/T879	弹性圆柱销8×28	Spring -type straight pin 8×28	1	1	1	1	1	1	1	1	1	1
25	700.38.166	拨叉座衬套	Seat gasket of gear fork	1	1	1	1	1	1	1	1	1	1
26	700.38.167-1	拨叉座	Seat of gear fork	1	1	1	1	1	1	1	1	1	1
27	700.38.170	拨叉手柄定位板	Locating plate for gear fork handle	1	1	1	1	1	1	1	1	1	1
28	GB/T308	钢球12	Thrust ball bearing 12	1	1	1	1	1	1	1	1	1	1
29	700.38.165	弹簧	Spring	1	1	1	1	1	1	1	1	1	1
30	700.38.502	操纵杆	Control rod	1	1	1	1	1	1	1	1	1	1
31	700.38.051	拉压手柄	Pull and pressure handle	1	1	1	1	1	1	1	1	1	1
32	700.38.503	连接叉	Connecting fork	1	1	1	1	1	1	1	1	1	1
33	GB/T95	垫圈12	Plain washer 12	1	1	1	1	1	1	1	1	1	1
34	700.38.501	连接杆	Drawbar	1	1	1	1	1	1	1	1	1	1
35	GB/T5783	螺栓M5×12	Bolt M5×12	2	2	2	2	2	2	2	2	2	2
36	GB/T93	垫圈5	Washer 5	2	2	2	2	2	2	2	2	2	2
37	GB/T5781	螺栓M10×25	Bolt M10×25	6	6	6	6	6	6	6	6	6	6
38	GB/T93	垫圈10	Washer 10	6	6	6	6	6	6	6	6	6	6
39	GB/T91	销3.2×24	Pin 3.2×24	1	1	1	1	1	1	1	1	1	1
40	GB/T882	销轴B12×35	Clevis pin with head B12×35	1	1	1	1	1	1	1	1	1	1
41	GB/T879	弹性圆柱销5×28	Spring -type straight pin 5×28	1	1	1	1	1	1	1	1	1	1
42	704.38.153	轴承座	Bearing housing	1	1	1	1	1	1	1	1	1	1
43	GB/T6170	螺母M14	Nut M14	1	1	1	1	1	1	1	1	1	1
44	GB/T5783	螺栓M14×30	Bolt M14×30	1	1	1	1	1	1	1	1	1	1



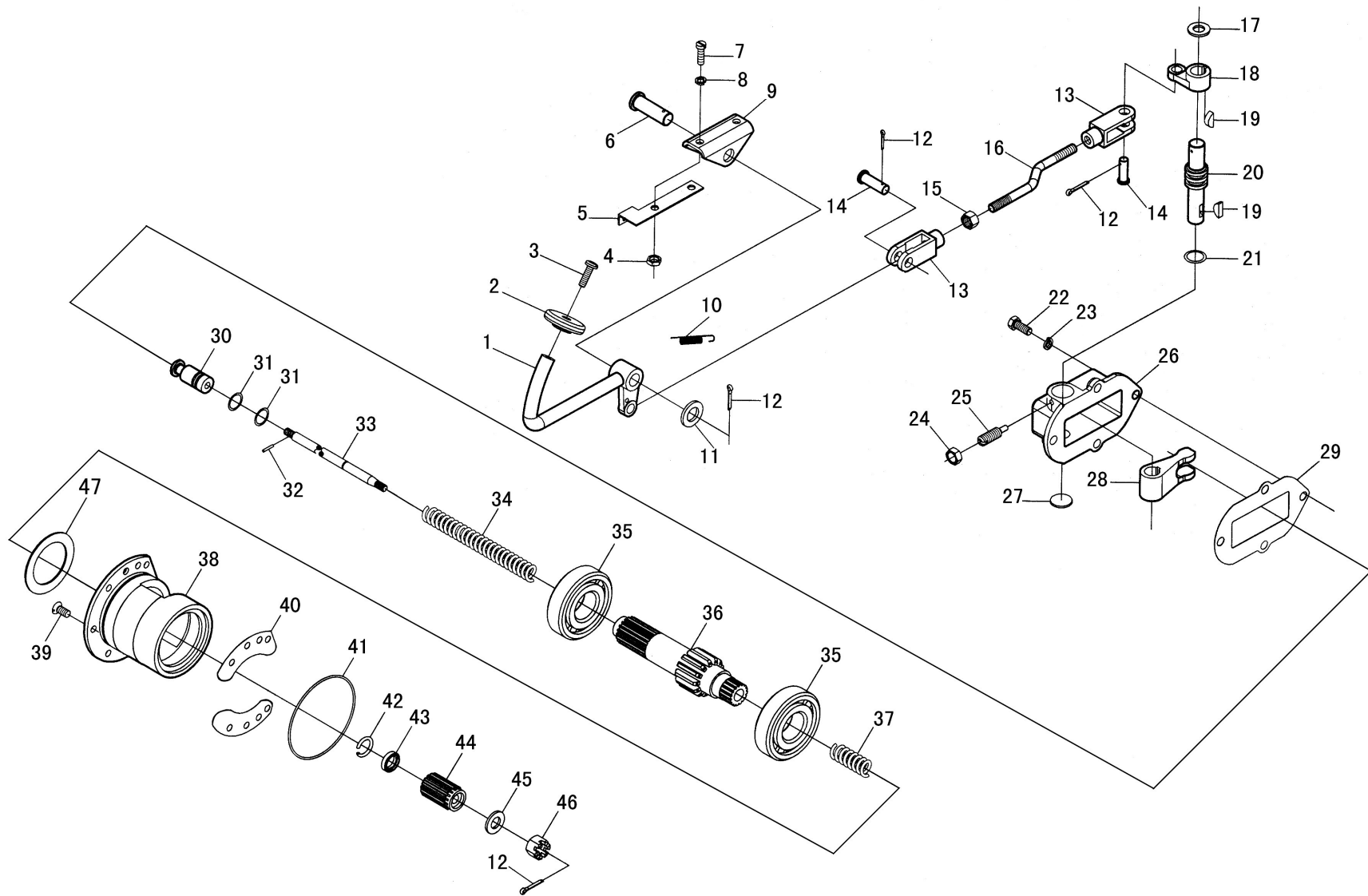
后桥总成 (三)
Rear Axle Assembly(III)

后桥总成 (三)

Rear Axle Assembly (III)

序号 Ser.No.	代号 Part No.	名称	Name	数量 Qty.										
				650	654	700	704	750	754	800	804	850	854	
1	GB/T297	圆锥滚子轴承30215	Tapered roller bearing 30215	2	2	2	2	2	2	2	2	2	2	2
2	GB/T6170	螺母M14	Nut M14	8	8	8	8	8	8	8	8	8	8	8
3	700.38.112	锁紧垫片	Lock washer	4	4	4	4	4	4	4	4	4	4	4
4	700.38.111	差速器右壳	Right housing of differential	1	1	1	1	1	1	1	1	1	1	1
5	700.38.118	半轴齿轮垫片	Washer ,semiaxle gear	2	2	2	2	2	2	2	2	2	2	2
6	700.38.117	半轴齿轮	Semiaxle gear	2	2	2	2	2	2	2	2	2	2	2
7	700.38.110	从动弧齿锥齿轮	Driven cambered angle gear	1	1	1	1			1	1			
	800.38.110	从动弧齿锥齿轮	Driven cambered angle gear					1	1			1	1	
8	700.38.113	圆头螺栓	Round head bolt	8	8	8	8	8	8	8	8	8	8	8
9	700.38.114	差速器十字轴	Centerpiece of differential	1	1	1	1	1	1	1	1	1	1	1
10	700.38.116	行星齿轮	Planetary gear	4	4	4	4	4	4	4	4	4	4	4
11	700.38.115	行星齿轮垫片	Washer of planetary gear	4	4	4	4	4	4	4	4	4	4	4
12	700.38.120	差速器左壳	Left housing of differential	1	1	1	1	1	1	1	1	1	1	1
13	GB/T855	垫圈12	washer 12	4	4	4	4	4	4	4	4	4	4	4
14	GB/T5782	螺栓M12×70	Bolt M12×70	8	8	8	8	8	8	8	8	8	8	8
15	GB/T3452.1	O形密封圈136×3.55	O-seal ring 136×3.55	2	2	2	2	2	2	2	2	2	2	2
16	700.38.123	调整垫片	Adjusting shim	△	△	△	△	△	△	△	△	△	△	△
17	700.38.122-1	最终传动小齿轮轴承座	Final transmission small gear bearing housing	1	1	1	1	1	1	1	1	1	1	1
18	GB/T68	螺钉M12×20	Screw M12×20	2	2	2	2	2	2	2	2	2	2	2
19	GB/T283	圆柱滚子轴承NJ311E	Cylindrical roller bearing NJ311E	2	2	2			2	2	2			
	GB/T297	圆锥滚子轴承30311	cone-shaped roller bearing 30311				2	2					2	2
20	700.38.124	左短半轴	Short semiaxle ,left	1	1	1				1	1	1		

△适量 Just right amout



后桥总成 (四)
Rear Axle Assembly (IV)

后桥总成 (四)

Rear Axle Assembly (IV)

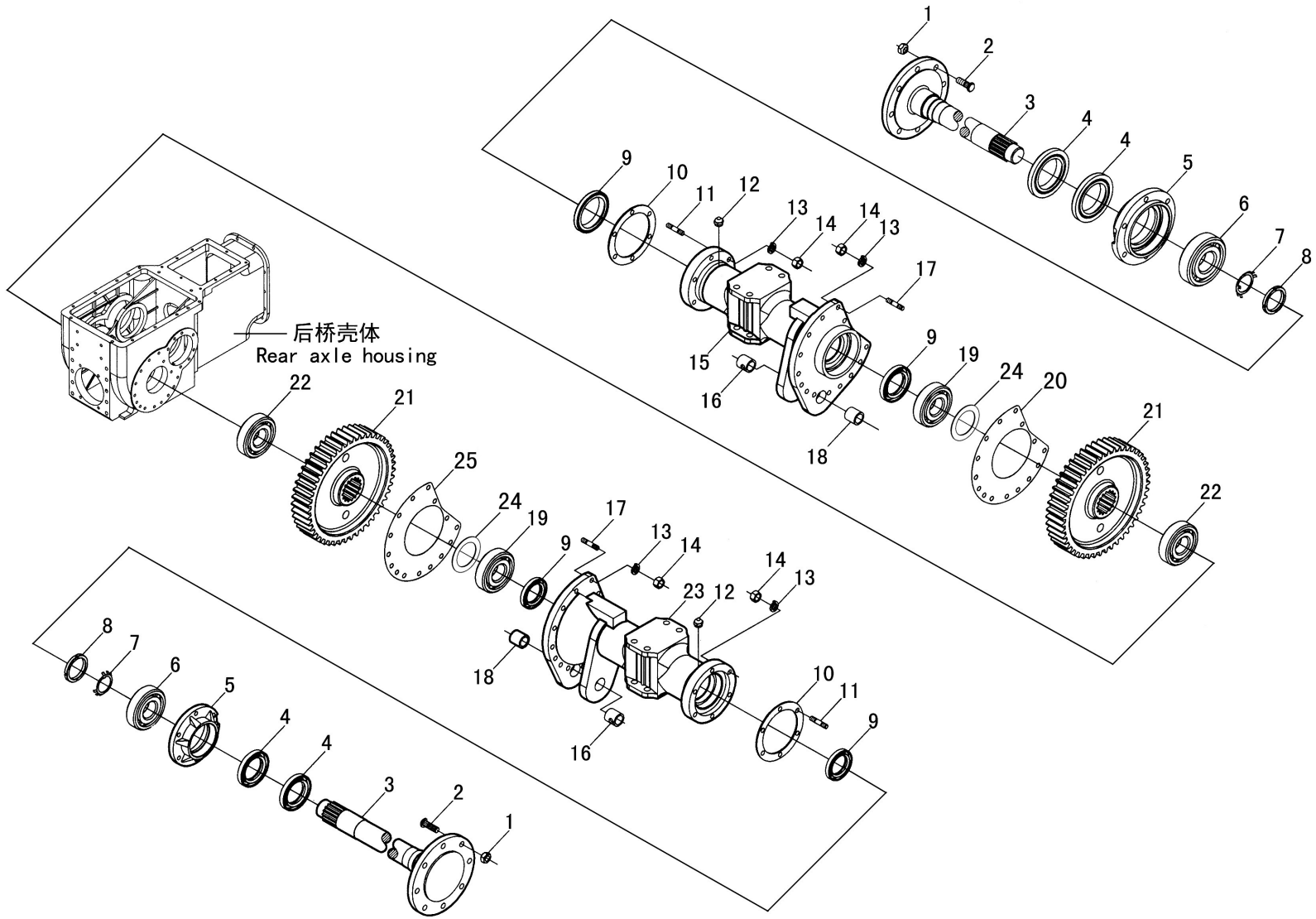
序号 Ser.No.	代号 Part No.	名称	Name	数量 Qty.										
				650	654	700	704	750	754	800	804	850	854	
1	700.38.041	差速锁踏板杆焊合	Pedal rod weldment of differential lock	1	1	1	1	1	1	1	1	1	1	1
2	700.38.410	差速锁踏板	Pedal of differential lock	1	1	1	1	1	1	1	1	1	1	1
3	GB/T65	螺栓M6×16	Bolt M6×16	1	1	1	1	1	1	1	1	1	1	1
4	GB/T6172	螺母M8	Nut M8	2	2	2	2	2	2	2	2	2	2	2
5	700.38.402	拉簧固定架	Bracket of extension spring	1	1	1	1	1	1	1	1	1	1	1
6	700.38.406	销轴	Pin roll	1	1	1	1	1	1	1	1	1	1	1
7	GB/T5783	螺钉M8×20	Bolt M8×20	2	2	2	2	2	2	2	2	2	2	2
8	GB/T93	垫圈8	Washer 8	2	2	2	2	2	2	2	2	2	2	2
9	700.38.404	踏板杆支架	Bracket of pedal rod	1	1	1	1	1	1	1	1	1	1	1
10	700.38.403	拉簧	Extension spring	1	1	1	1	1	1	1	1	1	1	1
11	GB/T97.1	垫圈16	Washer 16	1	1	1	1	1	1	1	1	1	1	1
12	GB/T91	销3.2×24	Pin 3.2×24	5	5	5	5	5	5	5	5	5	5	5
13	700.38.503	连接叉	Connecting fork	2	2	2	2	2	2	2	2	2	2	2
14	GB/T882	销轴B12×35	Clevis pin with head B12×35	2	2	2	2	2	2	2	2	2	2	2
15	GB/T6170	螺母M10	Nut M10	1	1	1	1	1	1	1	1	1	1	1
16	700.38.409	差速锁操纵推杆	Push rod for differential lock control	1	1	1	1	1	1	1	1	1	1	1
17	GB/T97.1	垫圈12	Washer 12	1	1	1	1	1	1	1	1	1	1	1
18	700.38.405	连接横臂	Cross arm for connecting	1	1	1	1	1	1	1	1	1	1	1
19	GB/T1099	半圆键5×19	Woodruff key5×19	2	2	2	2	2	2	2	2	2	2	2
20	700.38.190	差速器操纵轴	Control shaft of different	1	1	1	1	1	1	1	1	1	1	1
21	GB/T3452.1	O形密封圈20×3.55	O-seal ring 20×3.55	1	1	1	1	1	1	1	1	1	1	1
22	GB/T5783	螺栓M10×25	Bolt M10×25	4	4	4	4	4	4	4	4	4	4	4
23	GB/T93	垫圈10	Washer 10	4	4	4	4	4	4	4	4	4	4	4

续. 后桥总成 (四)

Cont. Rear Axle Assembly (IV)

序号 Ser.No.	代号 Part No.	名称	Name	数量 Qty.										
				650	654	700	704	750	754	800	804	850	854	
24	GB/T6170	螺母M6	Nut M6	1	1	1	1	1	1	1	1	1	1	1
25	GB/T75	螺钉M6×16	Screw M6×16	1	1	1	1	1	1	1	1	1	1	1
26	700.38.127	差速锁操纵机盖	Cover of differential lock control	1	1	1	1	1	1	1	1	1	1	1
27	700.38.128	塞片	Round plate	1	1	1	1	1	1	1	1	1	1	1
28	700.38.126	拨叉	Gear fork	1	1	1	1	1	1	1	1	1	1	1
29	700.38.125	垫片	Gasket	1	1	1	1	1	1	1	1	1	1	1
30	700.38.138	推杆头	End of push rod	1	1	1	1	1	1	1	1	1	1	1
31	GB/T3452.1	O形密封圈25×2.65	O-seal ring 25×2.65	2	2	2	2	2	2	2	2	2	2	2
32	GB/T879	弹性圆柱销4×28	Spring -type straight pin 4×28	1	1	1	1	1	1	1	1	1	1	1
33	700.38.137	推杆	Push rod	1	1	1	1	1	1	1	1	1	1	1
34	700.38.136	回位弹簧	Return spring	1	1	1	1	1	1	1	1	1	1	1
35	GB/T283	圆柱滚子轴承NJ311E	Cylindrical roller bearing NJ311E	2	2	2	2			2	2			
	GB/T297	圆锥滚子轴承30311	cone-shaped roller bearing 30311					2	2			2	2	
36	700.38.132	右短半轴	Short semiaxle ,right	1	1	1	1			1	1			
	800.38132	右短半轴	Short semiaxle ,right					1	1			1	1	
37	700.38.133	缓冲弹簧	Cushion -spring	1	1	1	1	1	1	1	1	1	1	1
38	700.38.122-1	最终传动小齿轮轴承座	Final transmission small gear bearing housing	1	1	1	1	1	1	1	1	1	1	1
39	GB/T68	螺钉M12×20	Screw M12×20	1	1	1	1	1	1	1	1	1	1	1
40	700.38.123	调整垫片	Adjusting shim	△	△	△	△	△	△	△	△	△	△	△
41	GB/T3452.1	O形密封圈136×3.55	O-seal ring 136×3.55	1	1	1	1	1	1	1	1	1	1	1
42	700.38.135	钢丝挡圈	Wire washer	1	1	1	1	1	1	1	1	1	1	1
43	700.38.134	外挡圈	Outer spacer	1	1	1	1	1	1	1	1	1	1	1

△适量 Just amount

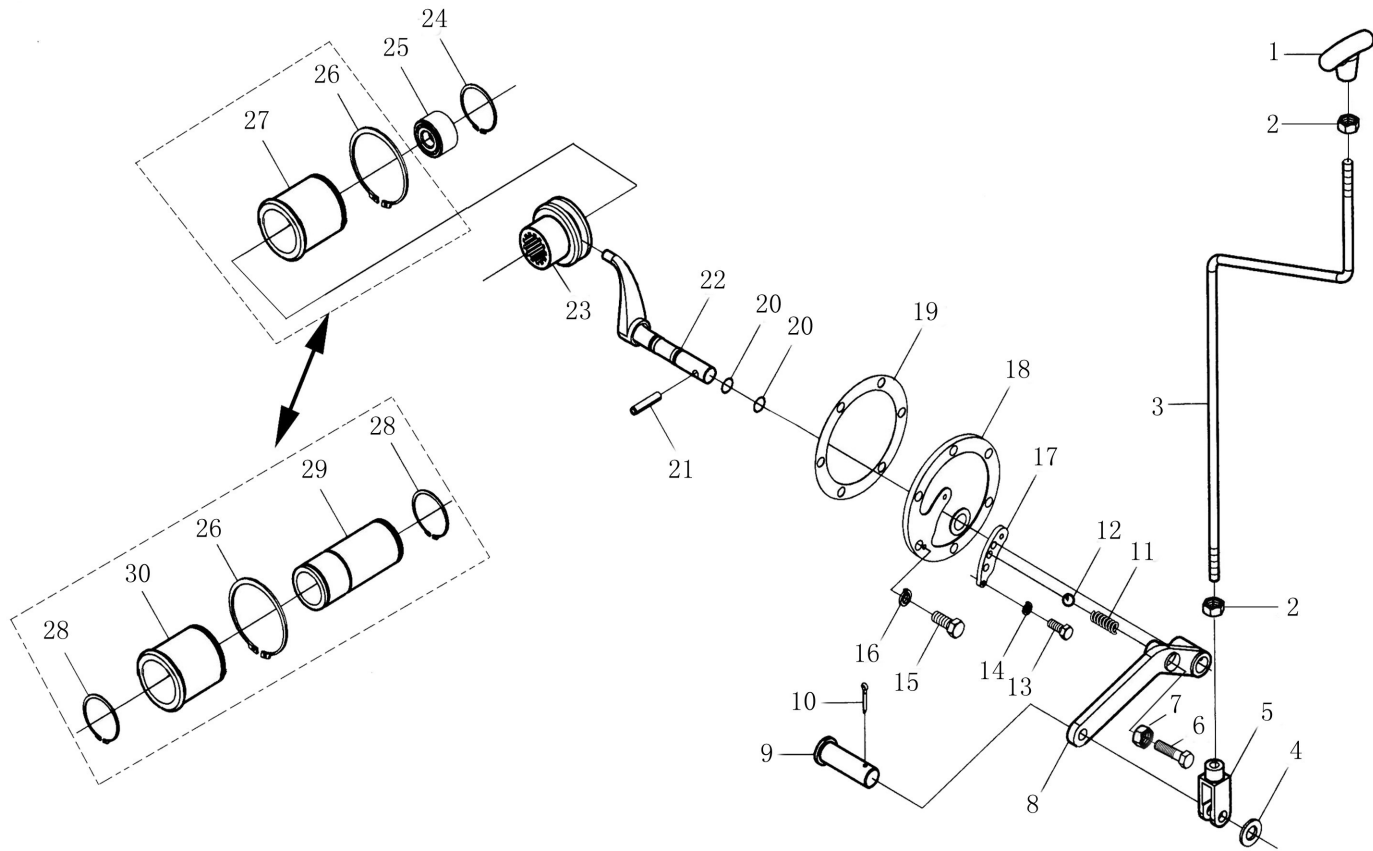


后桥总成 (五)
Rear Axle Assembly (V)

后桥总成 (五)

Rear Axle Assembly (V)

序号 Ser.No.	代号 Part No.	名称	Name	数量 Qty.										
				650	654	700	704	750	754	800	804	850	854	
1	700.38.139-2	后轮毂螺母	Nut ,rear hub	16	16	16	16	16	16	16	16	16	16	16
2	700.38.140A	后轮毂螺栓	Bolt ,rear hub	12	12	12	12	12	12	12	12	12	12	12
	700.38.140B	后轮毂螺栓	Bolt ,rear hub	4	4	4	4	4	4	4	4	4	4	4
3	700.38.145-2	长半轴	Long semiaxle	2										
	800.38.145-1	长半轴	Long semiaxle		2	2	2	2	2	2	2	2	2	2
4	GB/T9877.1	油封FB75×100×10	Oil sealing FB75×100×10	4										
	GB/T9877.1	油封FB75×105×10	Oil sealing FB75×105×10		4	4	4	4	4	4	4	4	4	4
5	700.38.141	轴承座	Bearing housing	2	2	2	2	2	2	2	2	2	2	2
6	GB/T276	深沟球轴承6214	Deep groove ball bearing 6213	2	2	2	2	2	2	2	2	2	2	2
7	GB/T858	止动垫圈68	Tab washer 64	2	2	2	2	2	2	2	2	2	2	2
8	GB/T812	螺母M68×2	Nut M64×2	2	2	2	2	2	2	2	2	2	2	2
9	GB/T9877.1	油封FB65×95×8	Oil sealing FB60×90×8	4	4	4	4	4	4	4	4	4	4	4
10	700.38.142	垫片	Gasket	2	2	2	2	2	2	2	2	2	2	2
11	GB/T899	螺柱AM12-M12×1.25×45	Double end stud AM12-M12×1.25×45	12	12	12	12	12	12	12	12	12	12	12
12	JB/T7940.1	油杯M10×1	Oil cup M10×1	2	2	2	2	2	2	2	2	2	2	2
13	GB/T93	垫圈12	Washer 12	42	42	42	42	42	42	42	42	42	42	42
14	GB/T6171	螺母M12×1.25	Nut M12×1.25	42	42	42	42	42	42	42	42	42	42	42
15	700.38.146-1	左半轴套管	Left semiaxle sleeve	1										
	800.38.146	左半轴套管	Left semiaxle sleeve		1	1	1	1	1	1	1	1	1	1
16	700.38.210	衬套(一)	Bush(I)	2	2	2	2	2	2	2	2	2	2	2
17	GB/T898	螺柱AGM12-M12×1.25×40-8.8	Stud AGM12-M12×1.25×40-8.8	30	30	30	30	30	30	30	30	30	30	30
18	700.38.211	衬套(二)	Bush(II)	2	2	2	2	2	2	2	2	2	2	2
19	GB/T276	深沟球轴承6312	Deep groove ball bearing 6312	2										



后桥总成(六)
Rear Axle Assembly(VII)

后桥总成 (六)

Rear Axle Assembly (VII)

序号 Ser.No.	代号 Part No.	名称	Name	数量 Qty.										
				650	654	700	704	750	754	800	804	850	854	
1	700.38.051	拉压手柄	Pull and pressure handle	1	1	1	1	1	1	1	1	1	1	1
2	GB/T6170	螺母M10	Nut M10	2	2	2	2	2	2	2	2	2	2	2
3	700.38.502	操纵杆	Control rod	1	1	1	1	1	1	1	1	1	1	1
4	GB/T95	垫圈12	Plain washer 12	1	1	1	1	1	1	1	1	1	1	1
5	700.38.503	连接叉	Connecting fork	1	1	1	1	1	1	1	1	1	1	1
6	GB/T5783	螺栓M14×30	Bolt M14×30	1	1	1	1	1	1	1	1	1	1	1
7	GB/T6170	螺母M14	Nut M14	1	1	1	1	1	1	1	1	1	1	1
8	700.38.501	连接杆	Drawbar	1	1	1	1	1	1	1	1	1	1	1
9	GB/T882	销轴B12×35	Clevis pin with head B12×35	1	1	1	1	1	1	1	1	1	1	1
10	GB/T91	销3×20	Pin3×20	1	1	1	1	1	1	1	1	1	1	1
11	700.38.165	弹簧	Spring	1	1	1	1	1	1	1	1	1	1	1
12	GB/T308	钢球12	Thrust ball bearing 12	1	1	1	1	1	1	1	1	1	1	1
13	GB/T5783	螺栓M5×12	Bolt M5×12	2	2	2	2	2	2	2	2	2	2	2
14	GB/T93	垫圈5	Washer 5	2	2	2	2	2	2	2	2	2	2	2
15	GB/T5783	螺栓M10×20	Bolt M10×25	6	6	6	6	6	6	6	6	6	6	6
16	GB/T93	垫圈10	Washer 10	6	6	6	6	6	6	6	6	6	6	6
17	700.38.170	拨叉手柄定位板	Locating plate for gear fork handle	1	1	1	1	1	1	1	1	1	1	1
18	700.38.167-1	拨叉座	Seat of gear fork	1	1	1	1	1	1	1	1	1	1	1
19	700.38.166	拨叉座衬套	Seat gasket of gear fork	1	1	1	1	1	1	1	1	1	1	1
20	GB 3452.1	O形密封圈13.2×2.65	O-seal ring 13.2×2.65	2	2	2	2	2	2	2	2	2	2	2
21	GB/T879	弹性圆柱销8×28	Spring -type straight pin 8×28	1	1	1	1	1	1	1	1	1	1	1
22	700.38.024	拨叉总成	Gear fork	1	1	1	1	1	1	1	1	1	1	1
23	700.38.157	传动齿轮连接套	Connecting sleeve for transmission gear	1	1	1	1	1	1	1	1	1	1	1

后桥总成 (六)

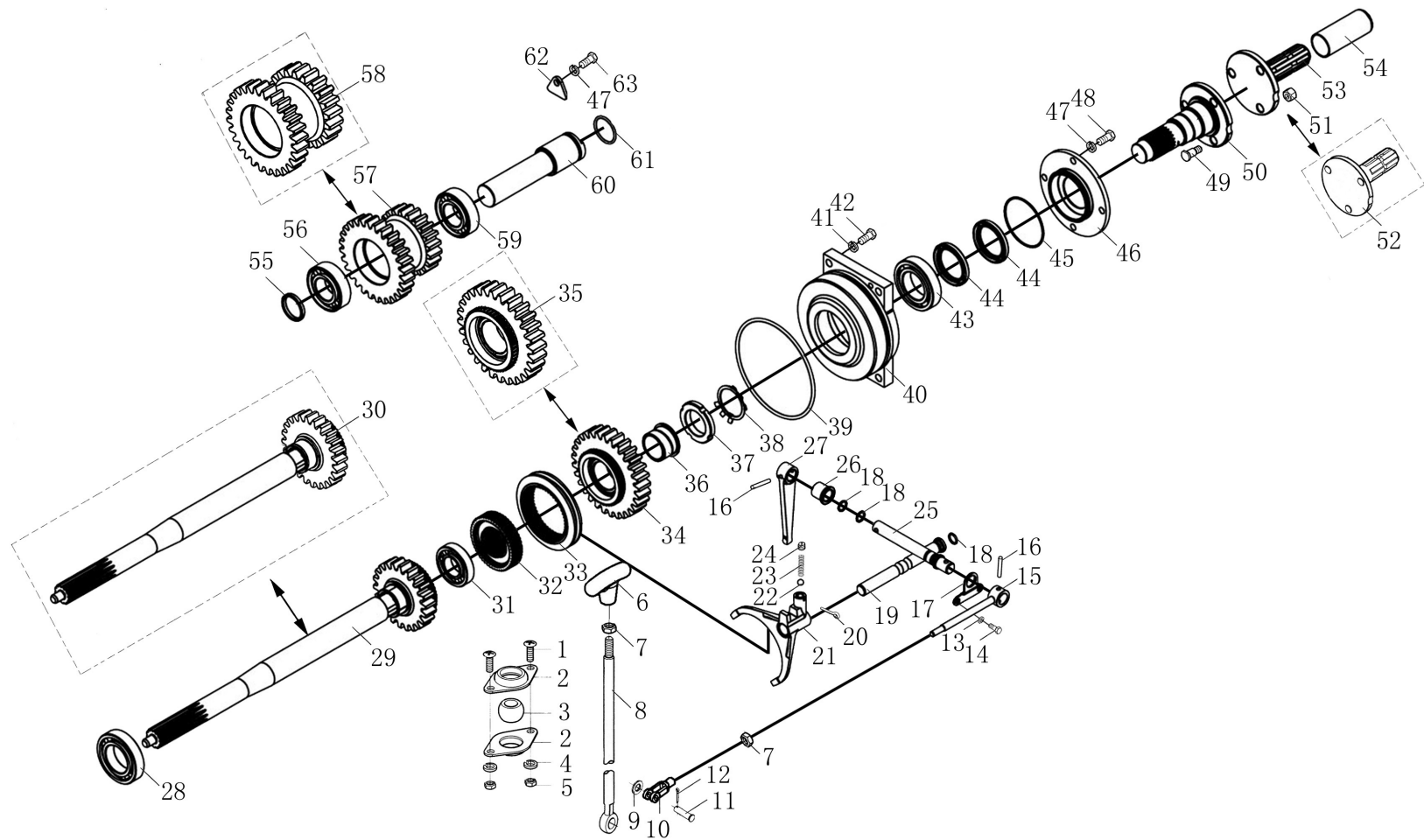
Rear Axle Assembly (VII)

序号 Ser.No.	代号 Part No.	名称	Name	数量 Qty.										
				650	654	700	704	750	754	800	804	850	854	
24	GB/T895.1	孔用钢丝挡圈42	Roundwire snap ring for hole 42	1	1	1	1	1	1	1	1	1	1	1
25	GB/T12764	滚针轴承HK3542	Needle roller bearing HK3524	1	1	1	1	1	1	1	1	1	1	1
26	GB/T894.1	轴用弹性挡圈65	Circlip for shaft 65	1		1		1		1		1		
27	700.38.155-1	轴承座	Bearing housing	1		1		1		1		1		
28	GB/T894.1	轴用弹性挡圈50	Circlip for shaft 50		2		2		2		2		2	
29	704.38.155	动力输出轴轴承座	Bearing housing of PTO		1		1		1		1		1	
30	704.38.153	轴承座	Bearing housing	1	1	1	1	1	1	1	1	1	1	1

后桥总成 (七)

Rear Axle Assembly (VIII)

序号 Ser.No.	代号 Part No.	名称	Name	数量 Qty.										
				650	654	700	704	750	754	800	804	850	854	
1	GB/T818	螺钉M6×15	Screw M6×15		2	2	2	2	2	2	2	2	2	2
2	1204.42.126	球套座	Seat, ball bush		2	2	2	2	2	2	2	2	2	2
3	1204.42.125	球套	Ball bush		1	1	1	1	1	1	1	1	1	1
4	GB/T93	垫圈6	Washer 6		2	2	2	2	2	2	2	2	2	2
5	GB/T6170	螺母M6	Nut M6		2	2	2	2	2	2	2	2	2	2
6	700.38.051	拉压手柄	Pull and pressure handle		1	1	1	1	1	1	1	1	1	1
7	GB/T6170	螺母M10	Nut M10		2	2	2	2	2	2	2	2	2	2
8	800.38.326	操纵杆	Control rod		1	1	1	1	1	1	1	1	1	1
9	GB/T95	垫圈8	Plain washer 8		1	1	1	1	1	1	1	1	1	1
10	160.21.107	离合器推杆调节叉	Connecting fork		1	1	1	1	1	1	1	1	1	1
11	GB/T882	销轴B8×30	Clevis pin with head B8×30		1	1	1	1	1	1	1	1	1	1
12	GB/T91	销3×16	Pin3×16		1	1	1	1	1	1	1	1	1	1
13	GB/T5783	螺栓M8×20	Bolt M8×20		2	2	2	2	2	2	2	2	2	2
14	GB/T93	垫圈8	Washer 8		2	2	2	2	2	2	2	2	2	2
15	800.38.032	摇臂杆焊合件	Rocker arm		1	1	1	1	1	1	1	1	1	1
16	GB/T879	弹性圆柱销8×28	Spring -type straight pin 8×28		2	2	2	2	2	2	2	2	2	2
17	800.38.318	定位板	Plate		1	1	1	1	1	1	1	1	1	1
18	GB/T3452.1	O形圈15×2.65	O-seal ring15×2.65		3	3	3	3	3	3	3	3	3	3
19	800.38.315	双速输出拔叉轴	Fork shaft, PTO		1	1	1	1	1	1	1	1	1	1
20	GB/T91	销3*30	Pin3×30		1	1	1	1	1	1	1	1	1	1
21	800.38.314	双速输出拔叉	Fork, PTO shaft		1	1	1	1	1	1	1	1	1	1
22	800.38.324	弹簧	Spring		1	1	1	1	1	1	1	1	1	1
23	GB/T308	钢球钢球10G100b	Thrust ball bearing 钢球10G100b		1	1	1	1	1	1	1	1	1	1



后桥总成(七)
Rear Axle Assembly(VIII)