

变速箱总成 (四)  
Gearbox Assembly (IV)

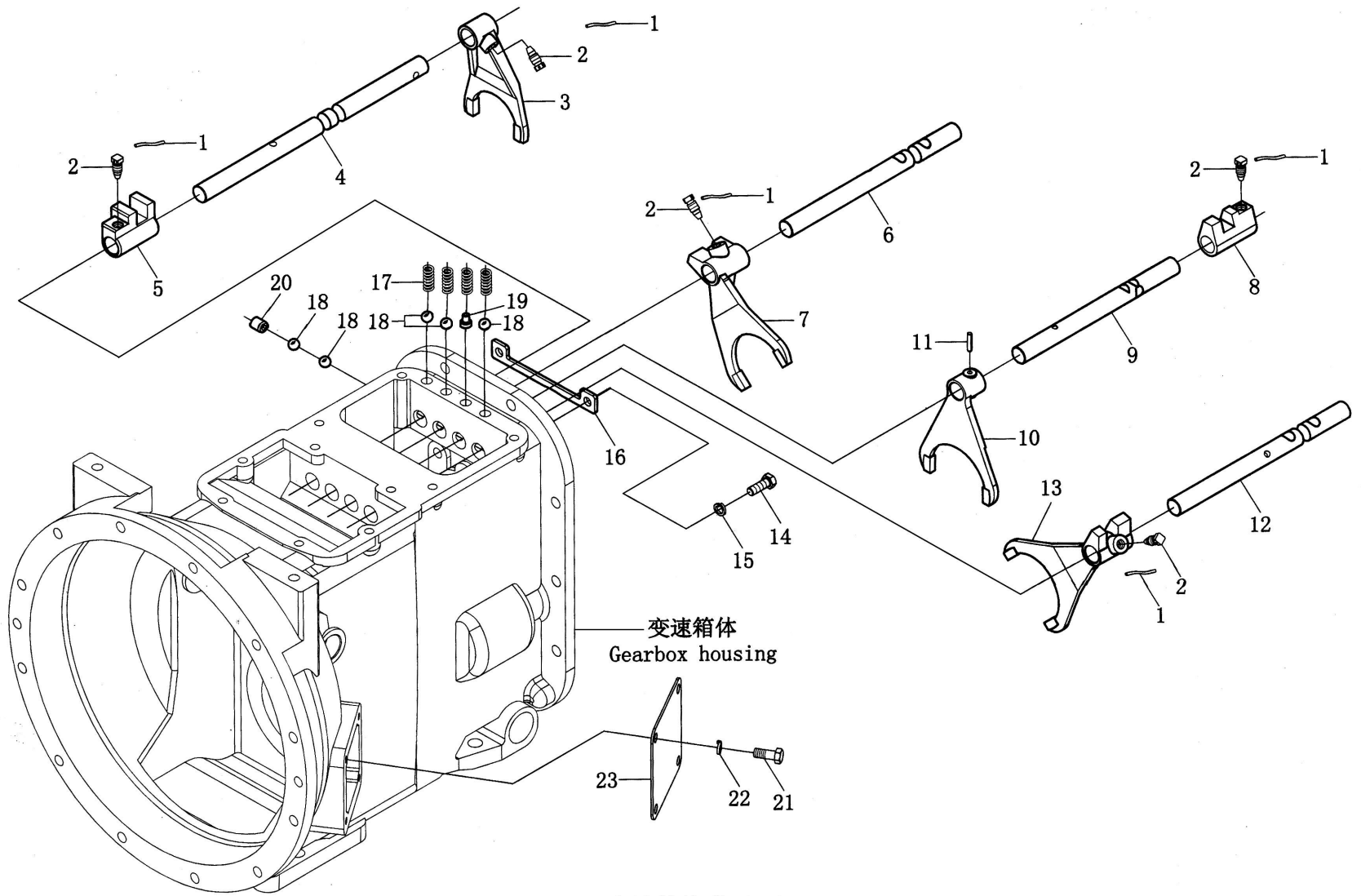
变速箱总成 (四)

Gearbox Assembly (IV)

序号 Ser.No.	代号 Part No.	名称	Name	数量 Qty.																
				650	654	700	704	750	754	800	804	850	854							
1	GB/T12764	冲压外圈滚针轴承HK3524	Needle roller bearing HK3524	1																
2	GB/T 276	轴承6211	Deep groove ball bearing 6211	3																
3	700.37.114	中间轴	Middle shaft	1																
4	700.37.160	隔套二	Bush ( II )	1																
5	700.37.116	中间轴二档齿轮	II gear ,middle shaft	1																
6	700.37.119	中间轴三档齿轮	III gear ,middle shaft	1																
7	700.37.120	隔套一	Bush ( I )	1																
8	700.37.121A	常啮合被动齿轮	Constant engaging driven gear	1																
9	700.37.135-1	动力输出轴中间轴之间摩擦片	Thrust plate	1																
10	700.37.138A	功率轴被动齿轮	Driven gear ,PTO	1																
11	700.37.182	动力输出轴衬套	Bush,PTO	1																
12	700.37.173	功率输出轴	Front shaft ,PTO	1																
13	700.37.115-1	倒档齿轮轴	Reverse gear shaft	1																
14	700.37.174	倒档齿轮止推圈	Thrust ring ,reverse gear	2																
15	JB/T7918	滚针轴承K25×31×20	Needle beaing K25×31×20	2																
16	700.37.117	倒档齿轮	Reverse gear	1																
17	700.37.131	倒档齿轮滚针内圈隔套	Inner bush of needle ,reverse gear	1																
18	700.37.170	倒档隔套	Reverse bush	1																
19	700.37.175	螺塞垫圈	Washer	1																
20	700.37.176	螺栓	Bolt	1																
21	GB/T91	开口销6.3×30	Split pin 6.3×30	1																
22	700.37.187	功率轴承盖调整垫片	Adjusting shim of bearing cover	△																

△适量 Just right amout





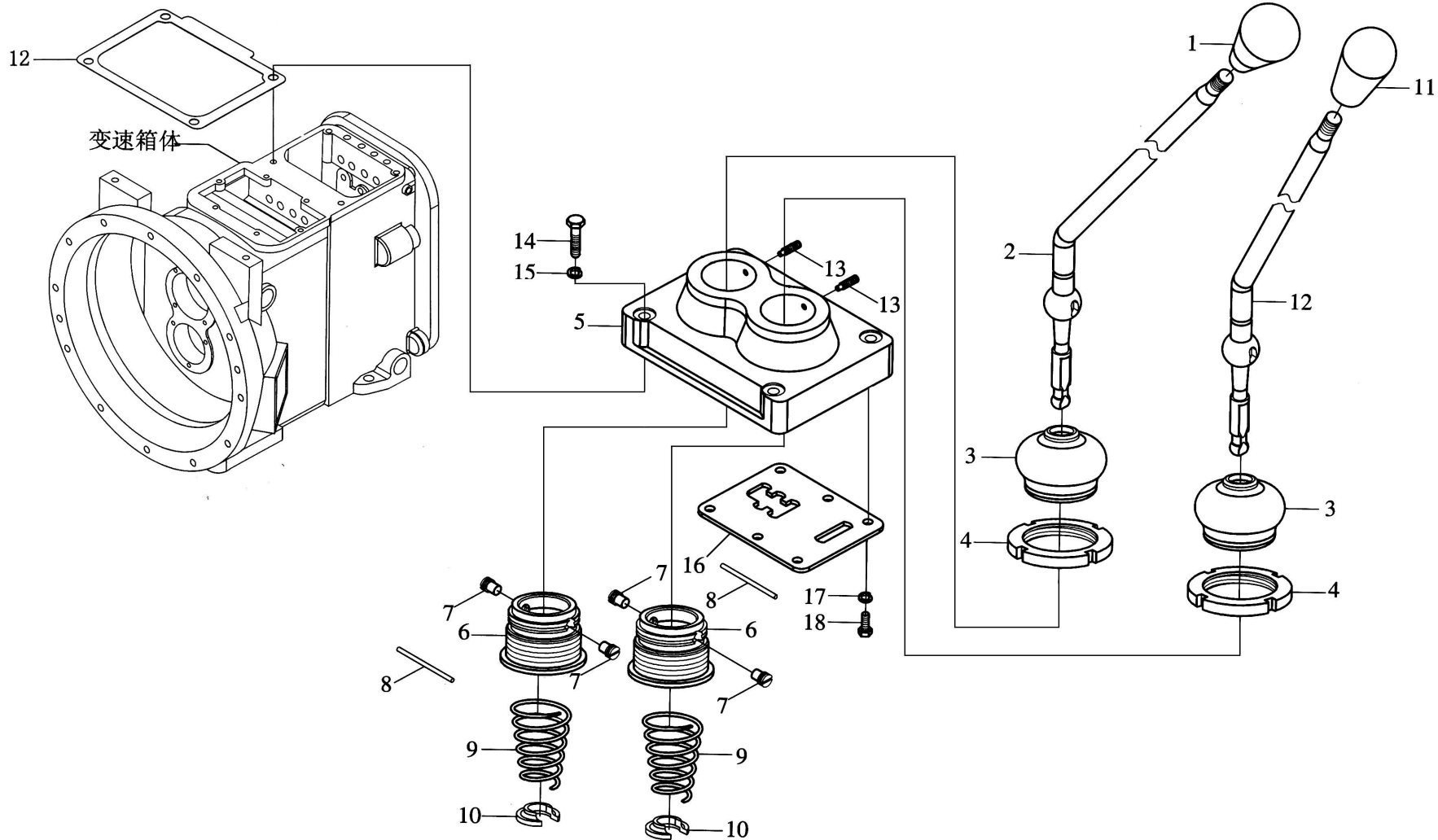
变速箱体  
Gearbox housing

变速箱总成 (五)  
Gearbox Assembly (V)

变速箱总成 (五)

Gearbox Assembly (V)

序号 Ser.No.	代号 Part No.	名称	Name	数量 Qty.																
				650	654	700	704	750	754	800	804	850	854							
1	GB/T373	低碳钢丝SZ-1.40	Low carbon steel wire SZ-1.40	5																
2	700.37.109	止动螺钉	Thrust bolt	5																
3	700.37.136	高低档拨叉	Shift fork for fast and slow gear	1																
4	700.37.122	高低档换档轴	Gearshift shaft for fast and slow gear	1																
5	700.37.126	快慢档拨块	Shift block for fast and slow gear	1																
6	700.37.125	一倒档换档轴	Gear change shaft , I reverse gear	1																
7	700.37.128	一倒档拨叉	Shift fork , I reverse gear	1																
8	700.37.133	四档拨叉	Shift block ,IV gear	1																
9	700.37.124	四档换档轴	Gear change shaft ,IV gear	1																
10	700.37.129	四档拨叉	Shift fork ,IV gear	1																
11	GB/T879	销5×32	Spring -type straight pin5×32	1																
12	700.37.123	二三档换档轴	Gear change shaft , II and III gear	1																
13	700.37.127	二三档拨叉	Shift fork , II and III gear	1																
14	GB/T5783	螺栓M10×20	Bolt M10×20	2																
15	GB/T97	垫圈10	Single coil spring lock washer 10	2																
16	700.37.171	换档轴行程限位片	Stroke limiting plate	1																
17	700.37.113	换档杆自锁弹簧	Self-locking spring	4																
18	GB/T308	钢球11.906 ( 15/32" )	Steel ball 11.906 ( 15/32" )	5																
19	700.37.178	四档换档轴锁销	Locking pin of gearshift shaft ,IV gear	1																
20	700.37.169	堵塞	Plug	1																
21	GB/T5783	螺钉M8×20	Screw M8×20	4																
22	GB/T93	垫圈8	Single coil spring lock washer 8	4																
23	700.37.181	观察孔盖板	Cover plate for observation	1																



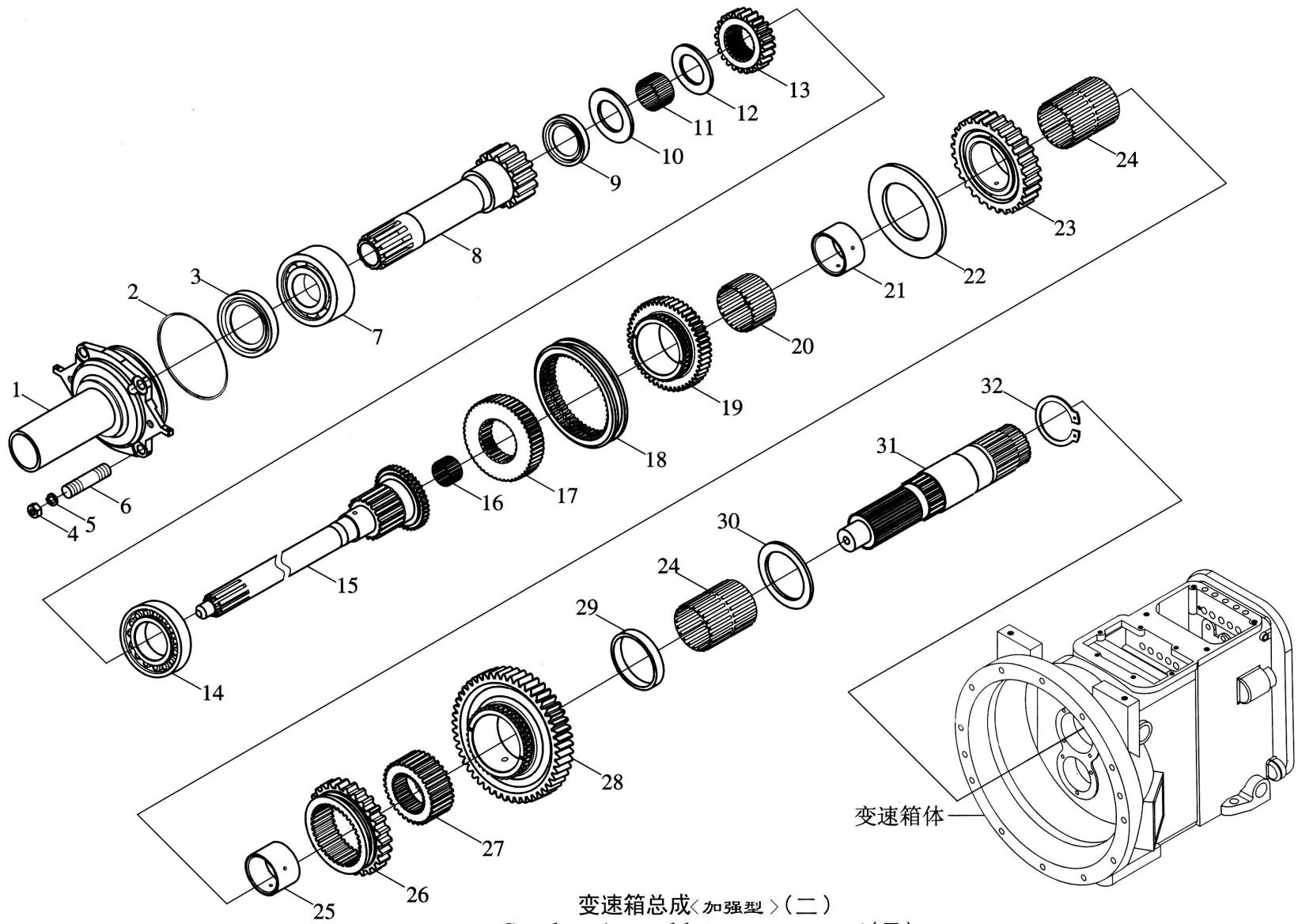
变速箱体总成〈加强型〉(一)  
Gearbox Assembly (Strengthened model) ( I )

变速箱总成<加强型>(一)

Gearbox Assembly (Strengthened model) ( I )

序号 Ser.No.	代号 Part No.	名称	Name	数量 Qty.										
				650	654	700	704	750	754	800	804	850	854	
1	800.37.013	主变速手柄球总成	Main gearshift handle cap assembly		1	1	1	1	1	1	1	1	1	1
2	800.37.157-1	主变速杆	Gear change handle,main gearshift		1	1	1	1	1	1	1	1	1	1
3	800.37.154	变速杆防尘罩	Sealing cap		2	2	2	2	2	2	2	2	2	2
4	800.37.305	变速杆座锁定螺母	Nut of gear change handle		2	2	2	2	2	2	2	2	2	2
5	800.37.151	变速箱盖	Gearbox housing		1	1	1	1	1	1	1	1	1	1
6	800.37.306A	变速杆座	seat of gear change handle		2	2	2	2	2	2	2	2	2	2
7	GB/T 75	开槽圆柱端紧钉螺钉M10×13	Screw M10×13		4	4	4	4	4	4	4	4	4	4
8	GB/T921	锁圈41	Washer 41		2	2	2	2	2	2	2	2	2	2
9	800.37.304	变速杆弹簧	Spring		2	2	2	2	2	2	2	2	2	2
10	800.37.182-1	变速杆弹簧挡圈	Shaft		2	2	2	2	2	2	2	2	2	2
11	700.37.014	副变速手柄球总成	Auxiliary gearshift handle cap assembly		1	1	1	1	1	1	1	1	1	1
	800.37.014 <sup>①</sup>	副变速手柄球总成	Auxiliary gearshift handle cap assembly		1	1	1	1	1	1	1	1	1	1
12	800.37.158-1	副变速杆	Gear change handle of auxiliary gearshift		1	1	1	1	1	1	1	1	1	1
13	GB/T 75	螺钉M5×12-A2L	Screw M5×12-A2L		2	2	2	2	2	2	2	2	2	2
14	GB/T 5780	螺栓M10×55-A2L	Bolt M10×55-A2L		4	4	4	4	4	4	4	4	4	4
15	GB/T 93	垫圈10	Washer 10		4	4	4	4	4	4	4	4	4	4
16	800.37.159	限位板	guide plate		1	1	1	1	1	1	1	1	1	1
	800.37.159A <sup>①</sup>	限位板	guide plate		1	1	1	1	1	1	1	1	1	1
17	GB/T93	垫圈8	Washer 8		6	6	6	6	6	6	6	6	6	6
18	GB/T 5783	螺栓M8×16-A2L	Bolt M8×16-A2L		6	6	6	6	6	6	6	6	6	6
19	700.37.110	换档杆总成衬片	Gasket ,gear change handle assembly		1	1	1	1	1	1	1	1	1	1

<sup>①</sup>带爬行档机型专用 Special for creeper



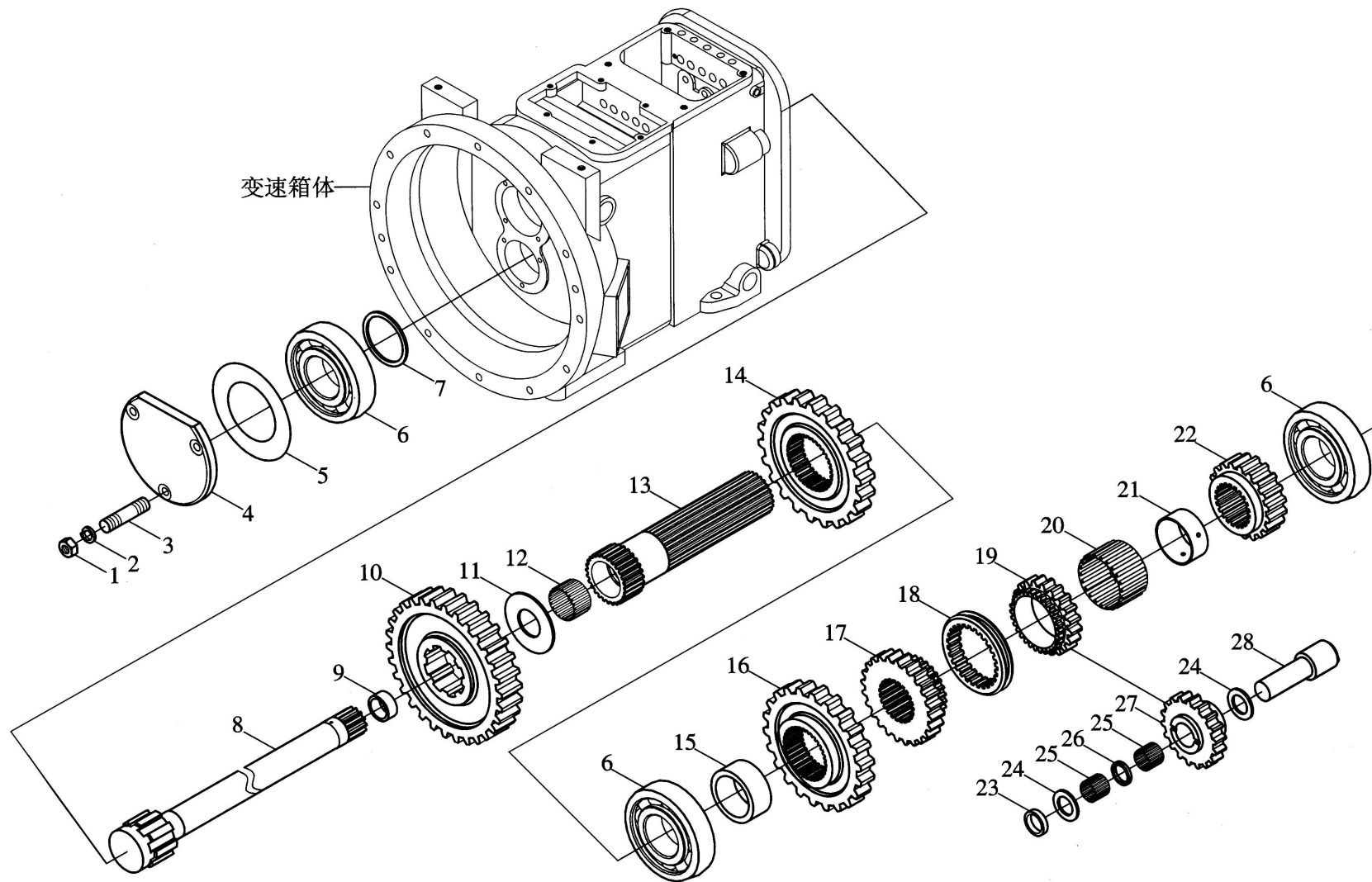
变速箱总成〈加强型〉(二)  
Gearbox Assembly (Strengthened model) ( II )

变速箱总成<加强型>(二)

Gearbox Assembly (Strengthened model) (II)

序号 Ser.No.	代号 Part No.	名称	Name	数量 Qty.										
				650	654	700	704	750	754	800	804	850	854	
1	800.37.102	第一轴承座	I bearing housing		1	1	1	1	1	1	1	1	1	1
2	700.37.185	O形圈	O-real ring		1	1	1	1	1	1	1	1	1	1
3	GB/T 9877.1	油封FB45×62×8	Oil sealing FB45×62×8		1	1	1	1	1	1	1	1	1	1
4	GB/T6170	螺母M10	Nut M10		4	4	4	4	4	4	4	4	4	4
5	GB/T 93	垫圈10	Washer 10		4	4	4	4	4	4	4	4	4	4
6	GB/T 898	双头螺柱M10×20	Bolt M10×20		4	4	4	4	4	4	4	4	4	4
7	GB/T 296	轴承3211A	Bearing 3211A		1	1	1	1	1	1	1	1	1	1
8	800.37.108	功率主动轴齿轮	Driving precision bearing		1	1	1	1	1	1	1	1	1	1
9	GB/T 9877.1	油封FB30×40×7	Oil sealing FB30×40×7		1	1	1	1	1	1	1	1	1	1
10	800.37.194	轴承垫圈	Washer		1	1	1	1	1	1	1	1	1	1
11	GB/T 5846	滚针轴承K35 42 25	Bearing K35 42 25		1	1	1	1	1	1	1	1	1	1
12	800.37.112	间隙垫圈	Clearance adjusting shim		1	1	1	1	1	1	1	1	1	1
13	800.37.103	常啮合主动齿轮	Constant engaging driving gear		1	1	1	1	1	1	1	1	1	1
14	GB/T 283	轴承NUP211E	Bearing NUP211E		1	1	1	1	1	1	1	1	1	1
15	800.37.104	第一轴	I shaft		1	1	1	1	1	1	1	1	1	1
16	GB/T 5846	滚针轴承K30 38 25	Bearing K30 38 25		1	1	1	1	1	1	1	1	1	1
17	800.37.140	三四档啮合座	III-IV gear engaged seat		1	1	1	1	1	1	1	1	1	1
18	800.37.142	三四档啮合套	III-IV gear engaged sleeve		1	1	1	1	1	1	1	1	1	1
19	800.37.105	二轴三档齿轮	III gear , II shaft		1	1	1	1	1	1	1	1	1	1
20	GB/T 5846	滚针轴承K56 64 31	Rolling bearing K56 64 31		1	1	1	1	1	1	1	1	1	1
21	800.37.130	三档齿轮衬套	Sleeve , III gear		1	1	1	1	1	1	1	1	1	1
22	800.37.134	二三档齿轮垫片	Gasket ,III-IV gear		1	1	1	1	1	1	1	1	1	1
23	800.37.110	二轴二档齿轮	II gear , II shaft		1	1	1	1	1	1	1	1	1	1





变速箱总成<加强型>(三)  
Gearbox Assembly(Strengthened model)(III)

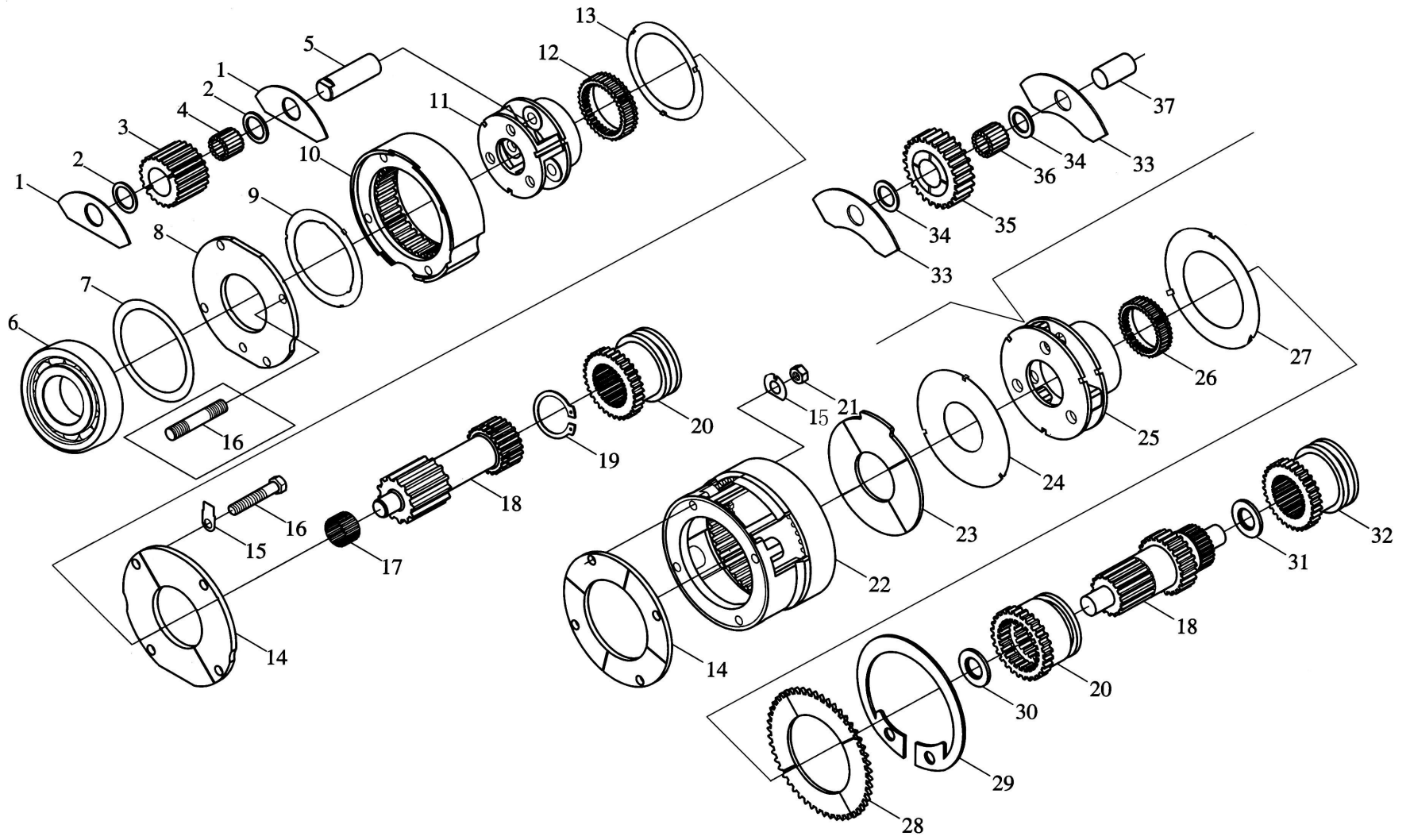
变速箱总成<加强型>(三)

Gearbox Assembly (Strengthened model) (III)

序号 Ser.No.	代号 Part No.	名称	Name	数量 Qty.										
				650	654	700	704	750	754	800	804	850	854	
1	GB/T 6170	螺母M10	Nut M10		3	3	3	3	3	3	3	3	3	3
2	GB/T 93	垫圈10	Washer 10		3	3	3	3	3	3	3	3	3	3
3	GB/T 898	双头螺柱GM10-M10×20	Bolt GM10-M10×20		3	3	3	3	3	3	3	3	3	3
4	800.37.141	动力轴承盖	Cover of bearing		1	1	1	1	1	1	1	1	1	1
5	800.37.187	功率轴承盖调整垫片	Adjusting shim		△	△	△	△	△	△	△	△	△	△
6	GB/T 276	深沟球轴承6211	Deep roller bearing 6211		3	3	3	3	3	3	3	3	3	3
7	800.37.193	间隙垫圈	Clearance adjusting shim		1	1	1	1	1	1	1	1	1	1
8	800.37.173	功率输出轴	Front shaft , PTO		1	1	1	1	1	1	1	1	1	1
9	700.37.182	动力输出前轴衬套	Bush ,PTO		1	1	1	1	1	1	1	1	1	1
10	800.37.138	功率轴被动齿轮	Driven gear ,PTO		1	1	1	1	1	1	1	1	1	1
11	800.37.135	动力输出中间轴止推片	Thrust ring		1	1	1	1	1	1	1	1	1	1
12	GB/T 5846	滚针轴承K35 47 21	Rolling bearing K35 47 21		1	1	1	1	1	1	1	1	1	1
13	800.37.114	中间轴	Middle shaft		1	1	1	1	1	1	1	1	1	1
14	800.37.121	常啮合被动齿轮	Constant engaging driven gear		1	1	1	1	1	1	1	1	1	1
15	800.37.120	隔套一	Bush ( I )		1	1	1	1	1	1	1	1	1	1
16	800.37.119	中间轴三档齿轮	III gear ,middle shaft		1	1	1	1	1	1	1	1	1	1
17	800.37.116	中间轴二档齿轮	II gear ,middle shaft		1	1	1	1	1	1	1	1	1	1
18	800.37.190	倒档啮合套	Engaging seat , reverse gear		1	1	1	1	1	1	1	1	1	1
19	800.37.188	倒档主动齿轮	Reverse gear		1	1	1	1	1	1	1	1	1	1
20	GB/T 5846	滚针轴承K62 68 29	Rolling bearing K62 68 29		1	1	1	1	1	1	1	1	1	1
21	800.37.189	低档齿轮衬套	Bush ,lower speed gear		1	1	1	1	1	1	1	1	1	1
22	800.37.118	中间轴一档齿轮	I gear,middle shaft		1	1	1	1	1	1	1	1	1	1

△适量 Just right amount





变速箱总成〈加强型〉(四)  
Gearbox Assembly (Strengthened model) (IV)

变速箱总成<加强型>(四)

Gearbox Assembly (Strengthened model) (IV)

序号 Ser.No.	代号 Part No.	名称	Name	数量 Qty.										
				650	654	700	704	750	754	800	804	850	854	
1	800.37.145	行星齿轮挡板	Thrust plate, planetary gear		6	6	6	6	6	6	6	6	6	6
2	800.37.146	行星齿轮滚针隔圈	Needle spacer, planetary gear		6	6	6	6	6	6	6	6	6	6
3	800.37.166-1	行星齿轮	Planetary gear		6	6	6	6	6	6	6	6	6	6
4	GB/T 309	滚针3.5×29.8	Needle 3.5×29.8		57	57	57	57	57	57	57	57	57	57
5	800.37.163	行星齿轮轴	Planetary gear shaft		3	3	3	3	3	3	3	3	3	3
6	GB/T 276	深沟球轴承6211	Bearing 6211		1	1	1	1	1	1	1	1	1	1
7	700.37.187	功率轴承盖调整片	Adjusting shim		△	△	△	△	△	△	△	△	△	△
8	800.37.149	行星齿座垫板	Gasket, planetary gear seat		1	1	1	1	1	1	1	1	1	1
9	700.37.165	行星齿座垫板	Gasket, planetary gear seat		1	1	1	1	1	1	1	1	1	1
10	800.37.147-2	行星内齿轮	Planetary inner gear		1	1	1	1	1	1	1	1	1	1
	800.37.147A-2 <sup>①</sup>	行星内齿轮	Planetary inner gear		1	1	1	1	1	1	1	1	1	1
11	800.37.162-1	行星齿轮架	Planetary gear housing		1	1	1	1	1	1	1	1	1	1
12	800.37.167	行星齿座内齿圈	Inner gear ring, planetary gear housing		1	1	1	1	1	1	1	1	1	1
13	800.37.164	行星架垫片(大)	Gasket, planetary gear seat		1	1	1	1	1	1	1	1	1	1
14	700.37.148	行星齿座盖板	Cover, planetary gear seat		1	1	1	1	1	1	1	1	1	1
	800.37.148A <sup>①</sup>	行星齿座盖板	Cover, planetary gear seat		1	1	1	1	1	1	1	1	1	1
15	GB/T 93	垫圈12	Washer 12		4	4	4	4	4	4	4	4	4	4
16	GB/T 5782	螺栓M12×80	Bolt M12×80		4	4	4	4	4	4	4	4	4	4
17	GB/T 5846	滚针轴承K20 26 20	Bearing K20 26 20		1	1	1	1	1	1	1	1	1	1
18	800.37.172-1	传动齿轮轴	Transmission gear shaft		1	1	1	1	1	1	1	1	1	1
	800.37.202-1 <sup>①</sup>	爬行档齿轮轴	Transmission gear shaft		1	1	1	1	1	1	1	1	1	1
19	GB/T 894.1	轴用弹性挡圈-A型42	Circlip 42		1	1	1	1	1	1	1	1	1	1

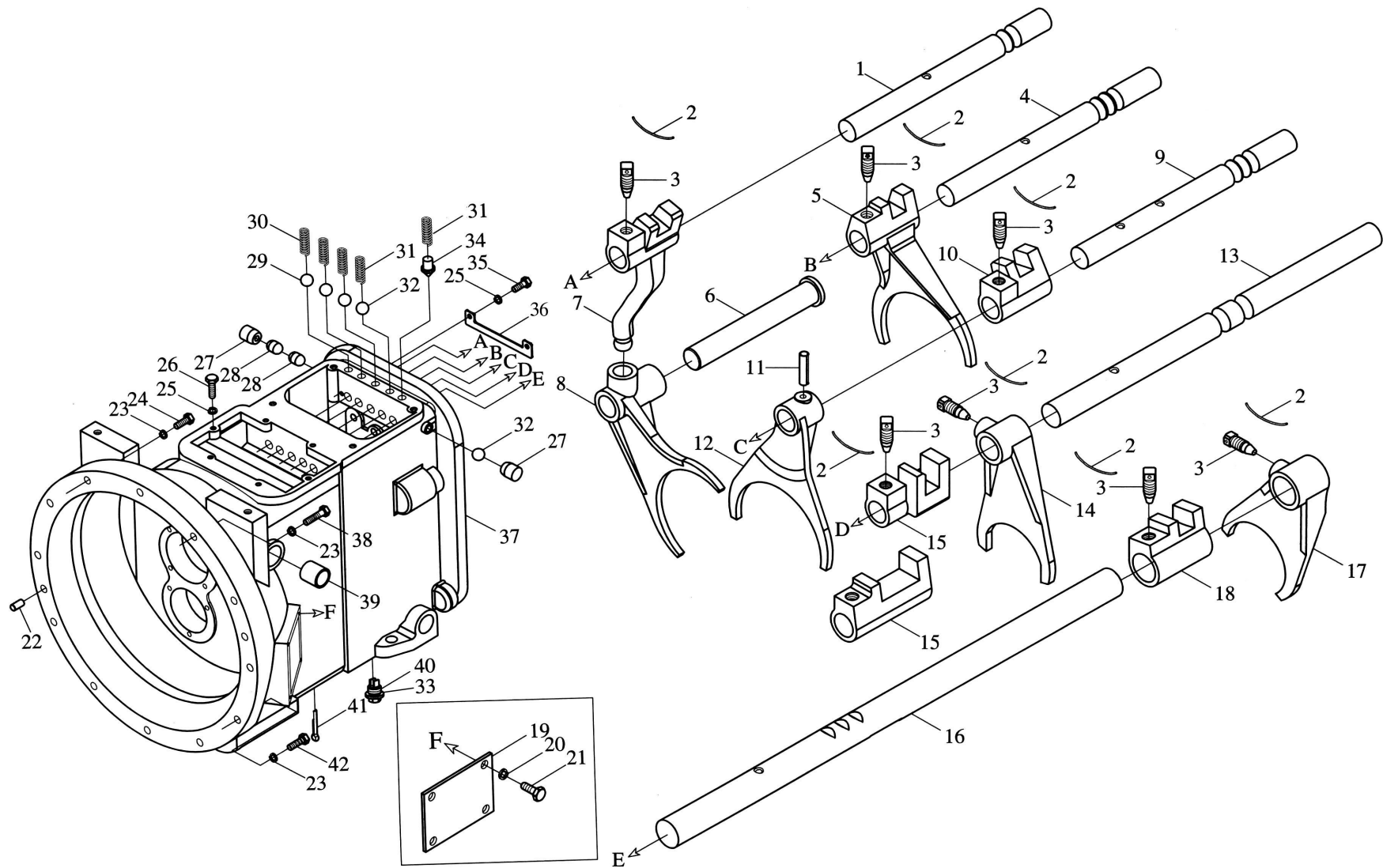
△适量 Just right amount <sup>①</sup>带爬行档机型专用 Special for creeper

续. 变速箱总成<加强型>(四)

Cont. Gearbox Assembly (Strengthened model) (IV)

序号 Ser.No.	代号 Part No.	名称	Name	数量 Qty.										
				650	654	700	704	750	754	800	804	850	854	
20	800.37.150-1	第二轴传动齿套	Transmission gear sleeve, II shaft		1	1	1	1	1	1	1	1	1	1
	800.37.150A-1 <sup>①</sup>	第二轴传动齿套	Transmission gear sleeve, II shaft		1	1	1	1	1	1	1	1	1	1
21	GB/T 6171	螺母M12×1.25	Nut M12×1.25		4	4	4	4	4	4	4	4	4	4
22	800.37.021 <sup>①</sup>	行星大齿圈焊合件	Gear ring weldment ,planetary gear housing		1	1	1	1	1	1	1	1	1	1
23	800.37.211 <sup>①</sup>	爬行档隔板	plate		1	1	1	1	1	1	1	1	1	1
24	800.37.212 <sup>①</sup>	爬行档前垫片	Rear Washer		1	1	1	1	1	1	1	1	1	1
25	800.37.213 <sup>①</sup>	爬行档行星齿轮座	planetary gear housing		1	1	1	1	1	1	1	1	1	1
26	700.37.167-1	行星齿座内齿圈	Inner gear ring, planetary gear housing		1	1	1	1	1	1	1	1	1	1
27	800.37.214 <sup>①</sup>	爬行档后垫片	Front washer		1	1	1	1	1	1	1	1	1	1
28	800.37.215 <sup>①</sup>	爬行档后档板	Stop plate		1	1	1	1	1	1	1	1	1	1
29	GB/T 893.1	孔用弹性挡圈-A型180	Circlip 180		1	1	1	1	1	1	1	1	1	1
30	800.37.230 <sup>①</sup>	垫片	Washer		1	1	1	1	1	1	1	1	1	1
31	800.37.229 <sup>①</sup>	间隙调整垫	Adjusting shim		1	1	1	1	1	1	1	1	1	1
32	800.37.201 <sup>①</sup>	爬行档连接套	Connecting hub		1	1	1	1	1	1	1	1	1	1
33	800.37.217 <sup>①</sup>	行星齿轮止推片	Thrust plate		6	6	6	6	6	6	6	6	6	6
34	700.37.146	行星齿轮滚针隔套	Bush		6	6	6	6	6	6	6	6	6	6
35	800.37.216 <sup>①</sup>	爬行档行星齿轮	Planetary gear		3	3	3	3	3	3	3	3	3	3
36	GB/T 309	滚针3.5×17.2	Needle 3.5×17.2		60	60	60	60	60	60	60	60	60	60
37	800.37.218 <sup>①</sup>	行星齿轮轴	Planetary gear shaft		3	3	3	3	3	3	3	3	3	3

<sup>①</sup> 带爬行档机型专用 Special for creeper



变速箱总成〈加强型〉(五)  
Gearbox Assembly (Strengthened model) (V)

变速箱总成<加强型>(五)

Gearbox Assembly (Strengthened model) (V)

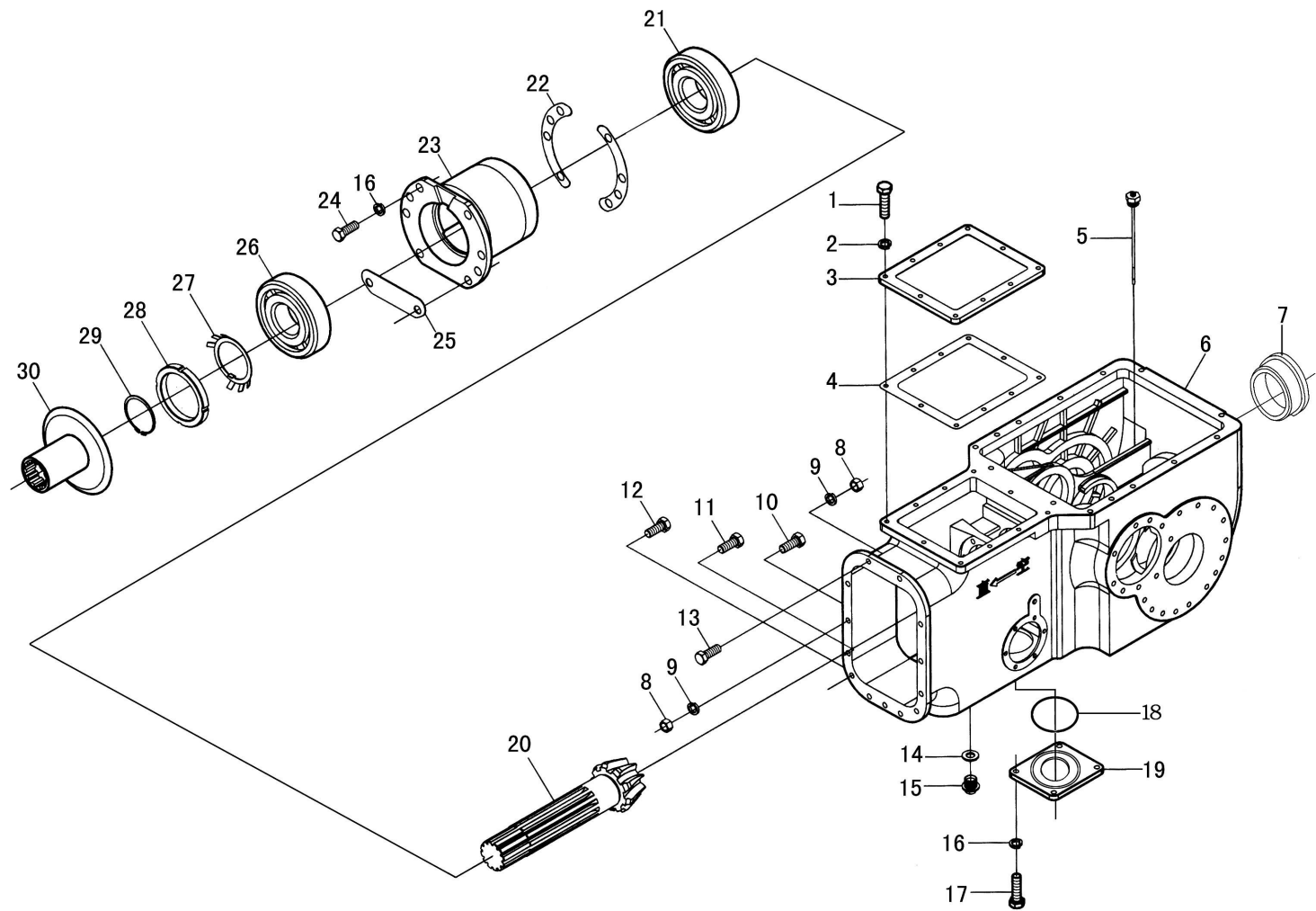
序号 Ser.No.	代号 Part No.	名称	Name	数量 Qty.										
				650	654	700	704	750	754	800	804	850	854	
1	800.37.123	倒档换档轴			1	1	1	1	1	1	1	1	1	1
2	GB/T 343	低碳钢丝SZ-1.40	Low carbon steel wire SZ-1.40		7	7	7	7	7	7	7	7	7	7
3	700.37.109	止动螺钉	Thrust bolt		7	7	7	7	7	7	7	7	7	7
4	800.37.125	一二档换档轴	Gear change shaft , I and II gear		1	1	1	1	1	1	1	1	1	1
5	800.37.128	一二档换拨叉	Shift fork , I and II gear		1	1	1	1	1	1	1	1	1	1
6	800.37.192	倒档中间拨叉轴	Middle shift fork shaft,reverse gear		1	1	1	1	1	1	1	1	1	1
7	800.37.127	倒档拨杆	Shift block for reverse gear		1	1	1	1	1	1	1	1	1	1
8	800.37.191	倒档拨叉	Shift fork ,reverse gear		1	1	1	1	1	1	1	1	1	1
9	800.37.124	三四档换档轴	Gear change shaft ,III and IVgear		1	1	1	1	1	1	1	1	1	1
10	800.37.133	三四档拨块	Shift block,III and IVgear		1	1	1	1	1	1	1	1	1	1
11	GB/T 879	弹性圆柱销5×32	Parallel pin 5×32		1	1	1	1	1	1	1	1	1	1
12	800.37.129	三四档拨叉	Shift fork ,III and IVgear		1	1	1	1	1	1	1	1	1	1
13	800.37.122	高低档换档轴	Gearshift shaft ofr fast and slow gear		1	1	1	1	1	1	1	1	1	1
	800.37.122A <sup>①</sup>	高低档换档轴	Gearshift shaft for fast and slow gear		1	1	1	1	1	1	1	1	1	1
14	800.37.136	高低档拨叉	Shift fork for fast and slow gear		1	1	1	1	1	1	1	1	1	1
	800.37.136A <sup>①</sup>	高低档拨叉	Shift fork for fast and slow gear		1	1	1	1	1	1	1	1	1	1
15	800.37.126	快慢档拨块	Shift block for fast and slow gear		1	1	1	1	1	1	1	1	1	1
	800.37.126A <sup>①</sup>	快慢档拨块	Shift block for fast and slow gear		1	1	1	1	1	1	1	1	1	1
16	800.37.204-1 <sup>①</sup>	爬行档拨叉轴	Fork shaft		1	1	1	1	1	1	1	1	1	1
17	800.37.203 <sup>①</sup>	爬行档拨叉	Shift fork		1	1	1	1	1	1	1	1	1	1
18	800.37.206 <sup>①</sup>	爬行档拨头	Shift fork		1	1	1	1	1	1	1	1	1	1
19	700.37.181	观察孔盖板	Cover plate of observation		1	1	1	1	1	1	1	1	1	1

① 带爬行档机型专用 Special for creeper

续. 变速箱总成<加强型>(五)

Cont. Gearbox Assembly (Strengthened model) (V)

序号 Ser.No.	代号 Part No.	名称	Name	数量 Qty.										
				650	654	700	704	750	754	800	804	850	854	
20	GB/T 93	垫圈8	Washer 10		4	4	4	4	4	4	4	4	4	4
21	GB/T 5783	螺栓M8×16	Bolt M8×16		4	4	4	4	4	4	4	4	4	4
22	GB/T 119	销B12×24	Pin B12×24		2	2	2	2	2	2	2	2	2	2
23	GB/T 93	垫圈12	Washer 12		12	12	12	12	12	12	12	12	12	12
24	GB/T 5783	螺栓M12×40	Bolt M12×40		9	9	9	9	9	9	9	9	9	9
25	GB/T 93	垫圈10	Washer 10		8	8	8	8	8	8	8	8	8	8
26	GB/T 5783	螺栓M10×30	Bolt M10×30		6	6	6	6	6	6	6	6	6	6
27	184.31.401	堵塞13×19	Plug 13×19		2	2	2	2	2	2	2	2	2	2
28	800.37.178	互锁销	Lockpin		2	2	2	2	2	2	2	2	2	2
29	GB/T 308	钢球10G100b	Stell ball 10G100b		3	3	3	3	3	3	3	3	3	3
30	800.37.139	弹簧	Spring		3	3	3	3	3	3	3	3	3	3
31	700.37.113	换档轴自锁弹簧	Self-locking spring		2	2	2	2	2	2	2	2	2	2
32	GB/T 308	钢球11.906(15/32")	Stell ball 10G100b		1	1	1	1	1	1	1	1	1	1
33	700.37.175	螺塞垫圈	Washer		1	1	1	1	1	1	1	1	1	1
34	700.37.178	四档换档轴锁销	Lockpin of gearshift ,IV gear		1	1	1	1	1	1	1	1	1	1
35	GB/T 5781	螺栓M10×20	Bolt M10×20		2	2	2	2	2	2	2	2	2	2
36	800.37.171	换档轴行程限位片	Stroke limiting plate		1	1	1	1	1	1	1	1	1	1
37	800.37.101	变速箱体	Gearbox housing		1	1	1	1	1	1	1	1	1	1
38	GB/T 5782	螺栓M12×90	Bolt M12×90		2	2	2	2	2	2	2	2	2	2
39	300.21.115	衬套	Sleeve		2	2	2	2	2	2	2	2	2	2
40	700.37.176	螺塞	Plug		1	1	1	1	1	1	1	1	1	1
41	GB/T 91	开口销6.3×30	Split pin 6.3×30		1	1	1	1	1	1	1	1	1	1
42	GB/T 5783	螺栓M12×50	Bolt M12×50		1	1	1	1	1	1	1	1	1	1



后桥总成 (一)  
Rear Axle Assembly ( I )