

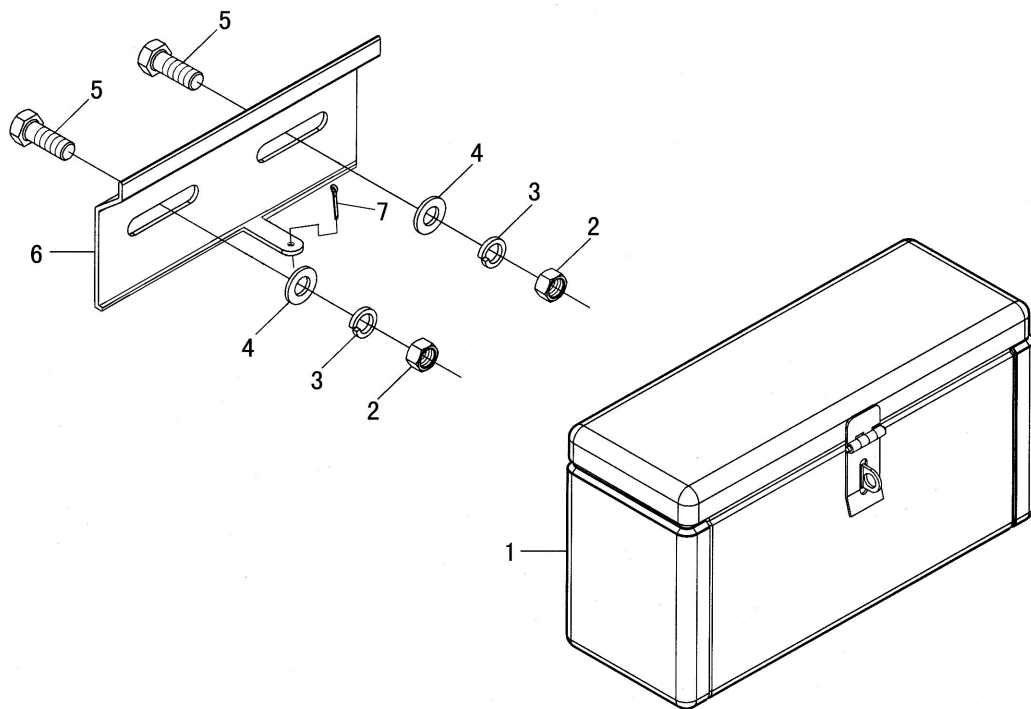
电瓶座总成 II
Battery Support Seat Assmy II

电瓶座总成 II

Battery Support Seat Assy II

序号 Ser. No.	代 号 Part No.	名 称	Name	数量 Qty.
1	GB/T6170	螺母M12	Nut M12	2
2	GB/T93	垫圈12	Washer12	6
3	300E.31.203	螺杆	Screw rod	1
4	300.48.032	电瓶支座及配重支架焊合件(SL2105)	welding pieces of support	1
	300.48.032A	电瓶支座及配重支架焊合件	welding pieces of support	1
5	GB/T97.1	垫圈8	Washer8	2
6	GB/T 91	开口销2×20	Split pin 2×20	2
7	GB/T 898	螺柱AM14-M14×1.5×50	Stud AM14-M14×1.5×50	4
8	GB/T 93	垫圈14	Washer14	4
9	GB/T 6176	螺母M14×1.5	Nut M14	4
10	300.48.325	橡胶垫	Rubber pad	2
11	300.48.156	橡胶垫	Rubber pad	2
12	300.48.150	电瓶拉杆	Thread rod	2
13	300.48.107	电瓶压板	Clamping plate	1
14	GB/T 889	螺母M8	Washer8	2
15	GB/T 5783	螺栓M12×35	Bolt M12×35	4
16	GB/T 97.1	垫圈12	Washer12	4
17	GB/T 93	垫圈12	Washer12	4
18	300E.31.011	前联接销焊合件	Connect pin	1
19	300E.35.020	弹簧锁销焊合件	Split pin	1
20	300.47.702	前号牌座		1
21	GB/T 5783	螺栓M10×20	Bolt M10×20	2
22	GB/T 93	垫圈10	Washer10	2
23	300E.31.202	前配重	Ballast weight	4

※配流铁机罩用

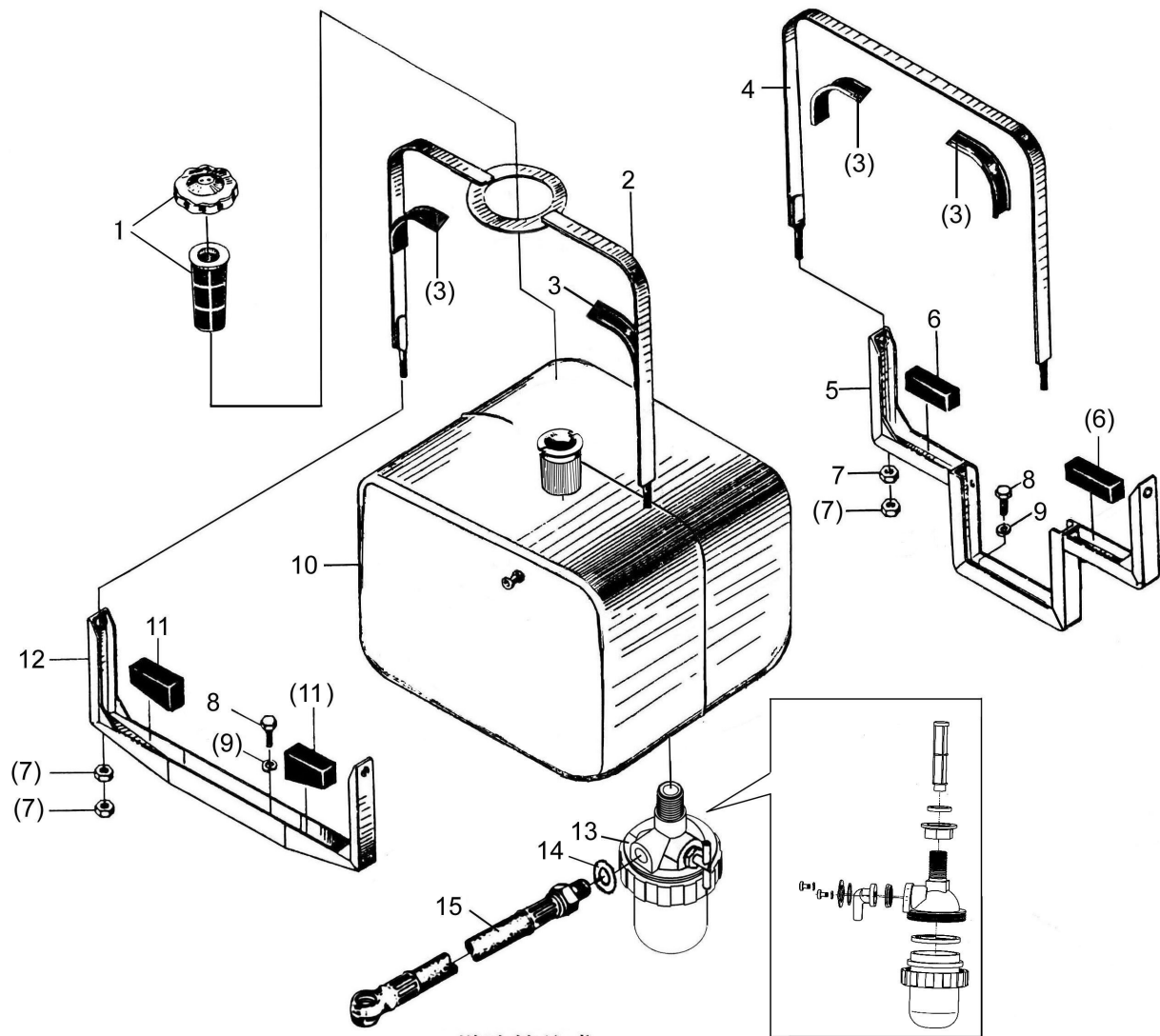


工具箱总成
Tool Box

工具箱总成

Tool Box Assembly

序号 Ser. No.	代 号 Part No.	名 称	Name	数量 Qty.
1	160.49.001	工具箱总成	Tool box assembly	1
2	GB/T6170	螺母M12	Nut 12	2
3	GB/T93	垫圈12	Washer 12	2
4	GB/T97.1	垫圈12	Washer	2
5	GB/T5783	螺栓M12×25	Bolt M12×25	2
6	700.49.101	固定支板	Fixed bracket	1
7	GB/T 91	销 6.3×20	Pin 6.3×20	1



燃油箱总成
Fuel Tank

燃油箱总成

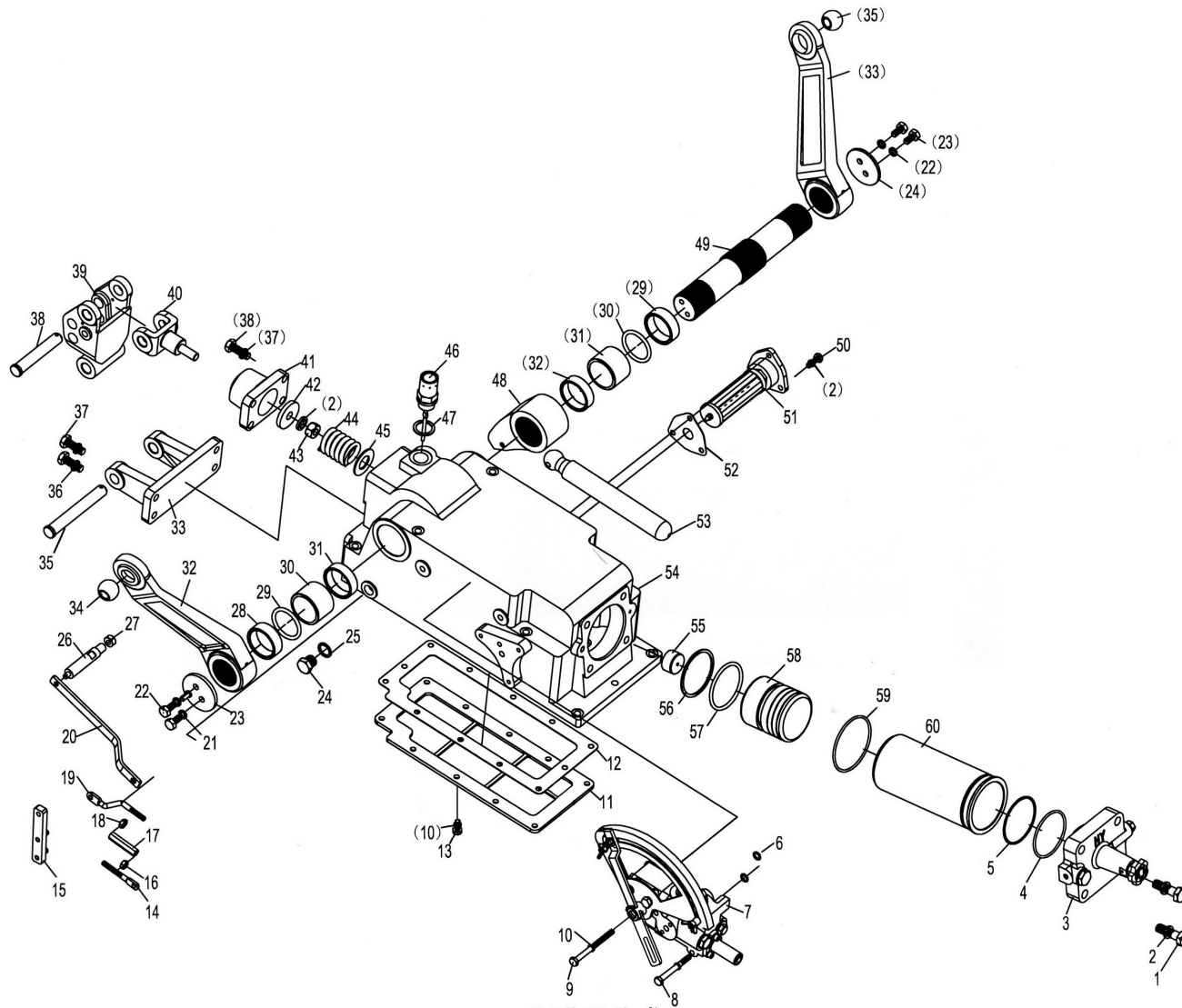
Fuel Tank

序号 Ser. No.	代号 Part No.	名称	Name	数量 Qty.
1	250.50.022	油箱盖组合件	Fuel tank cap assembly	1
	160.50.015	滤网组件	Screen, oil filler hole	1
2	300.50.012	前钢带焊合件	Front steel band	1
3	300.50.101-2	钢带胶垫	Rubber pad	4
4	300.50.013	后钢带焊合件	Rear steel band	2
5	300.50.017-1	油箱后支架焊合件	Fuel tank rear support	1
6	300.50.104	后橡胶块	Rear rubber block	2
7	GB/T6170	螺母M8	Nut M8	8
8	GB/T5783	螺栓M8×20	Bolt M8×20	4
9	GB/T93	垫圈8	Washer8	4
10	300.50.011A-2	油箱体焊合件	Fuel tank	1
	300.50.011H	油箱体焊合件-----配驾驶室	Fuel tank	1
11	300.50.103	前橡胶块	Front rubber block	2
12	300.50.016-1	油箱前支架焊合件	Fuel tank front support	1
13	250.50.020	沉淀杯总成	Sedimentary cup	1
	250.50.901	进油过滤网	Screen, oil filler hole	1
	250.50.902	沉淀杯滤座	Oil filler seat	1
	250.50.903	法兰螺母密封圈	Seal ring	1
	250.50.904	装配固定法兰螺母	Nut	1
	250.50.905	开关关通橡胶孔圈	Seal ring	1
	250.50.906	关通后圆过滤网	Screen	1
	250.50.907	开关面盖板	Handle cap	1
	250.50.908	开关压弹垫片	Washer	1

续.燃油箱总成

Cont.Fuel Tank

序号 Ser. No.	代号 Part No.	名称	Name	数量 Qty.
14	250.50.909	开关手柄	Handle	1
	250.50.910	塑料环固紧圈	Seal ring	1
	250.50.911	塑料杯	Cup	1
		复合垫圈12	Washer 12	1
15	300.50.018-1	输油管总成(500mm) (配TY395柴油机)	Fuel pipe assembly(500mm) (For TY395 engine)	1



提升器总成
Lifter Assembly

提升器总成

Lifter Assembly

序号 Ser. No.	代号 Part No.	名称	Name	数量 Qty.
1	GB5785-86	螺栓M14X1.5X50	BOLT M14X1.5X50	4
2	GB93-87	垫圈14	washer 14	4
3	YT300B.55.011	缸头总成	cylinder cap assy	1
4	GB3452.1-92	O型密封圈77.5X3.55	O-ring 77.5X3.55	1
5	E300.55.118	挡圈85X1.5	circlip 85X1.5	1
6	GB3452.1-92	O型密封圈11.8X2.65	O-ring 11.8X2.65	2
7	E300.57.001	分配器总成	distributor assy	1
8	GB5782-86	螺栓M8X80	bolt M8X80	2
9	GB5782-86	螺栓M8X100	bolt M8X100	1
10	GB93-87	垫圈8	washer 8	18
11	YT300B.55.103	底板	bottom cover	1
12	YT300B.55.102	纸垫	gasket	1
13	GB5781-86	螺栓M8X20	bolt M8X20	12
14	E300.55.169	前调节杆	front adjusting link	1
15	E300.55.017	综合调节摆杆合件	swing pole	1
16	300.55.158	螺母M8 (左)	nut M8	1
17	YT300B.55.110	调节螺套	adjusting bush	1
18	GB6170-86	螺母M8	nut M8	1
19	300.55.156	后调节杆	rear adjusting link	1
20	YT300B.55.109	力调节反馈杆	connecting link	1
21	GB93-87	垫圈10	washer 10	4
22	GB5781-86	螺栓M10X20	bolt M10X20	4
23	YT500.55.020	右压板合件	plate	1

续. 提升器总成

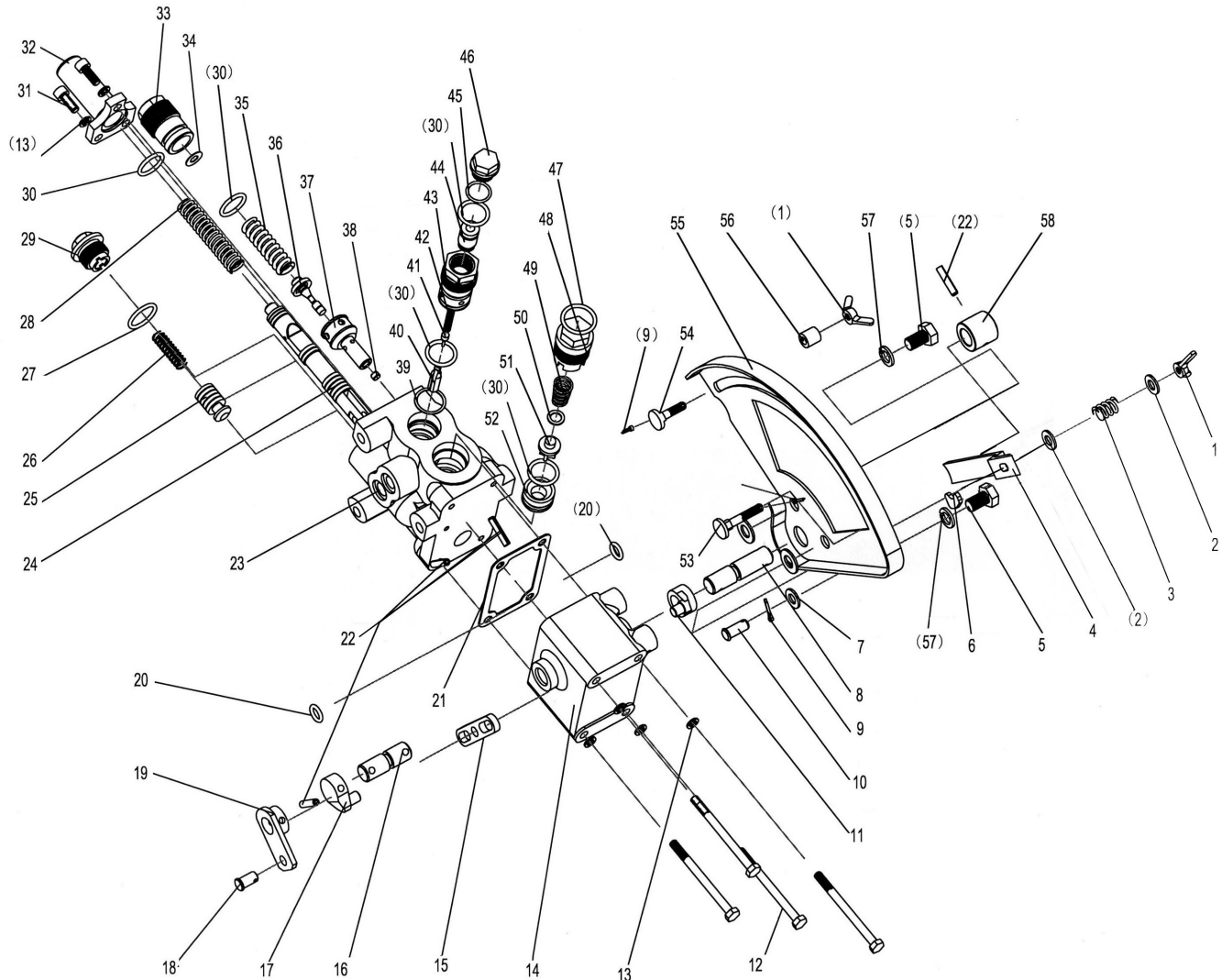
Cont. Lifter Assembly

序号 Ser. No.	代号 Part No.	名称	Name	数量 Qty.
24	150D.55.228-2	螺塞	plug	1
25	150D.54.118	铝垫	washer	1
26	YT300B.55.115	支承销	pin	1
27	GB6170-86	螺母M10	nut M10	1
28	YT300B.55.111C	轴套	bush	2
29	GB1235-76	O型密封圈60X5.7	O-ring 60X5.7	2
30	BY350.55.122	提升轴套	lifting bush	2
31	YT300B.55.111B	轴套	bush	2
32	FT500A.55.119	提升臂	lifting arm	2
33	25.55.125	上挂结点摇臂支架	support	1
34	25.55.156	球形接头	ball connector	2
35	25.55.128	摇臂连接销	rocker arm link pin	1
36	GB93-87	垫圈12	washer 12	8
37	GB5782-86	螺栓M12X35	bolt M12X35	8
38	25.55.126	摇臂上连接销	pin	1
39	YT300B.55.108	摇臂	rocker arm	1
40	YT300B.55.107	力调节传感头	Sensor	1
41	YT300B.55.105	弹簧座	spring	1
42	YT300B.55.106	弹簧垫板	spring plate	1
43	GB6170-86	螺母M14	nut M14	1
44	E300.55.107	力调节弹簧	draft-responsive control spring	1
45	YT300B.55.104	垫片	washer	1
46	TS300B.55.041	油尺通气塞总成	dipstick	1

续. 提升器总成

Cont. Lifter Assembly

序号 Ser. No.	代 号 Part No.	名 称	Name	数量 Qty.
47	18.55.104	垫片	washer	1
48	300.55.151	内提升臂	inlet arm	1
49	YT300B.55.112	提升轴	lift shaft	1
50	GB5783-86	螺栓M8X25	bolt M8X25	3
51	YT300A.55.039	滤清器总成	filter assy	1
52	YT300.55.253	出油接头纸垫	gasket	1
53	E300.55.152	顶杆	piston rod	1
54	YT300B.55.101	提升器壳体	lift case	1
55	E300.55.142	活塞球座	piston ball seat	1
56	E300.55.117	挡圈85X2	washer 85X2	1
57	GB3452.1-92	O型密封圈75X5.3	O-ring 75X5.3	1
58	E300.55.141	活塞	piston	1
59	GB3452.1-92	O型密封圈90X3.55	O-ring 90X3.55	1
60	YT300B.55.114	缸筒	cylinder	1



分配器总成
Distributor Assembly

分配器总成

Distributor Assembly

序号 Ser. No.	代号 Part No.	名称	Name	数量 Qty.
1	GB62-88	蝶形螺母M6	Nut M6	2
2	GB97.1-85	垫圈8	Washer 8	3
3	T30.57.123	手柄压紧弹簧	Spring	1
4	E300.57.151	手柄	Control handle	1
5	GB5781-86	螺栓M10X16	Bolt M10X16	2
6	T30.57.147	挡块	Stopper	1
7	E300.57.128	隔套	Bush	2
8	T30.57.108	手柄轴	Handle shaft	1
9	GB91-86	销2X12	Pin 2X12	3
10	T30.57.125	销轴	Pin	1
11	T30.57.110	操纵臂	Conctrol level	1
12	GB5782-86	螺栓M6X75	Bolt M6X75	4
13	GB859-87	垫圈6	Washer 6	7
14	T30.57.117A	侧盖	Cover	1
15	T30.57.119	摆杆	Swing pole	1
16	T30.57.109	反馈轴	Feedback shaft	1
17	T30.57.120	反馈小臂	Feedback small arm	1
18	E300.57.135	销轴	Pin	1
19	T30.57.133-2	反馈臂	Feedback arm	1
20	GB3452.1-92	O型密封圈9.5X2.65	O-ring 9.5X2.65	2
21	T30.57.118	纸垫	Gasket	1
22	GB879-86	销5X24	Pin 5X24	4
23	T30.57.115-2A	分配器壳体	Disrtibutor case	1

续. 分配器总成

Cont. Distributor Assembly

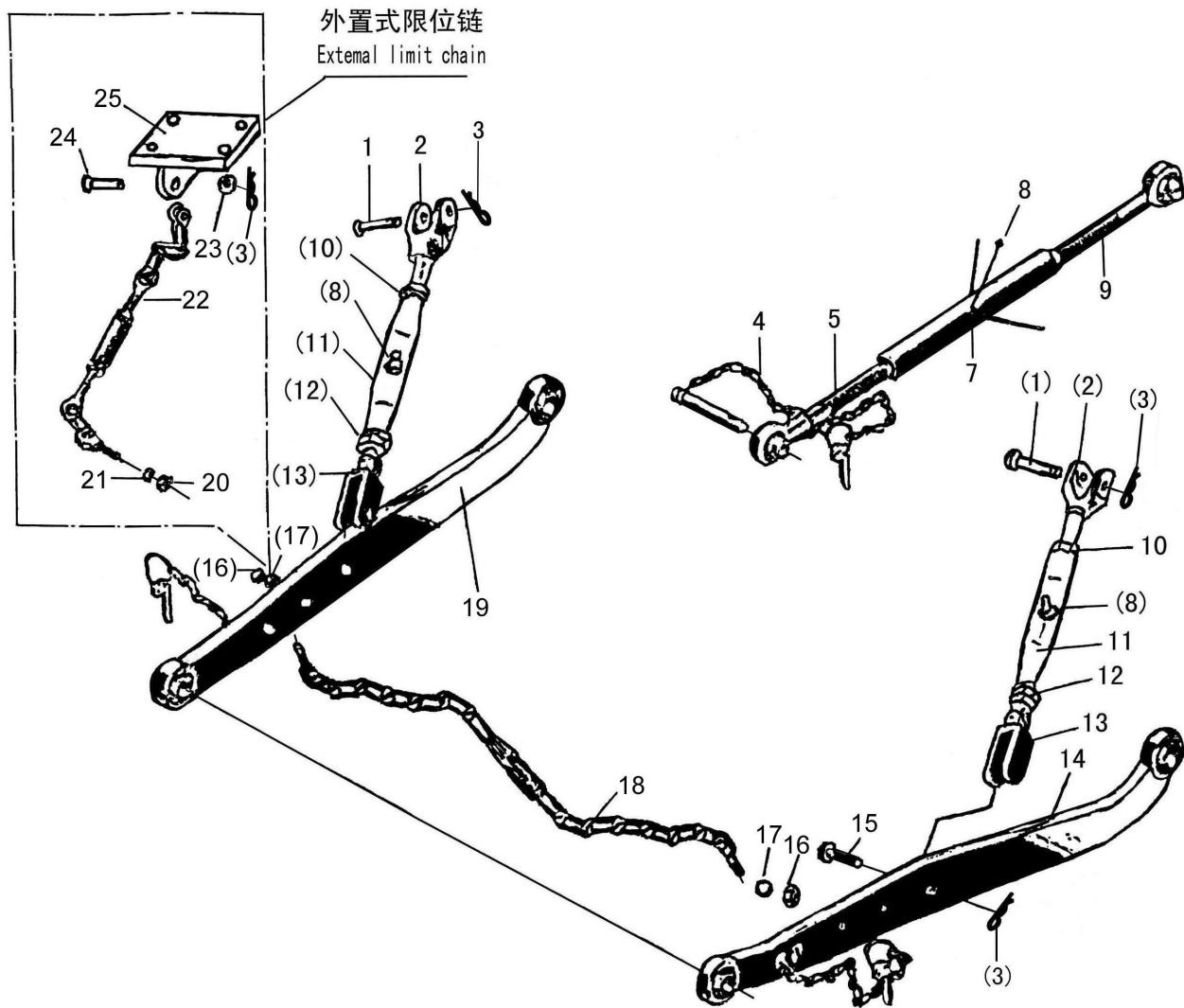
序号 Ser. No.	代号 Part No.	名称	Name	数量 Qty.
24	T30.57.122	主控制阀	Main control valve	1
25	T30.57.104-2	回油阀体	Oil return valve	1
26	T30.57.103-1	回油阀弹簧	Spring	1
27	GB3452.1-92	O型密封圈21.2X2.65	O-ring 21.2X2.65	1
28	T30.57.112	主控制阀弹簧	Spring	1
29	T30.57.102-1	回油阀堵塞	Plug	1
30	GB3452.1-92	O型密封圈19X2.65	O-ring 19X2.65	6
31	GB70-85	螺钉M6X16	Screw M6X16	3
32	T30.57.113	主阀前盖	Front cover	1
33	T30.57.105	安全阀弹簧座	Spring support	1
34	T30.57.156~158	调整垫片	Adjusting washer	△
35	T30.57.106	安全阀弹簧	Spring	1
36	T30.57.107	安全阀体	Safety valve	1
37	T30.57.127	安全阀座	Safety valve support	1
38	T30.57.128	安全阀堵头	Safety valve plug	1
39	T30.57.159~161	调整垫片	Adjusting washer	△
40	T30.57.114	推销	Pushing pin	1
41	T30.57.166	下降阀芯	relief valve	1
42	T30.57.140-1	下降阀弹簧	Spring	1
43	T30.57.138	下降阀套	Valve bush	1
44	T30.57.139	下降阀体	Valve case	1
45	GB3452.1-92	O型密封圈16X1.8	O-ring 16X1.8	1
46	T30.57.137	下降阀堵塞	Valve plug	1

续. 分配器总成

Cont. Distributor Assembly

序号 Ser. No.	代号 Part No.	名称	Name	数量 Qty.
47	GB3452.1-92	O型密封圈22.4X2.65	O-ring 22.4X2.65	1
48	T30.57.145B	单向阀堵塞	Plug	1
49	T30.57.144B	单向阀弹簧	Spring	1
50	T30.57.164	单向阀体垫	Washer	1
51	T30.57.142B	单向阀体	Needle valve	1
52	T30.57.143B	单向阀座	Valve seat	1
53	T30.57.124	手柄压紧螺钉	Impacted screw	1
54	T30.57.126	耕深限位螺钉	Limited screw	1
55	E300.57.147-1	操纵板	Control plate	1
56	T30.57.129	耕深限位套	Limited bush	1
57	GB859-87	垫圈10	Washer 10	2
58	E300.57.132	手柄连接套	Handle bush	1

△适量 Just right amount



悬挂机构总成
Suspension Mechanism Assembly

悬挂机构总成

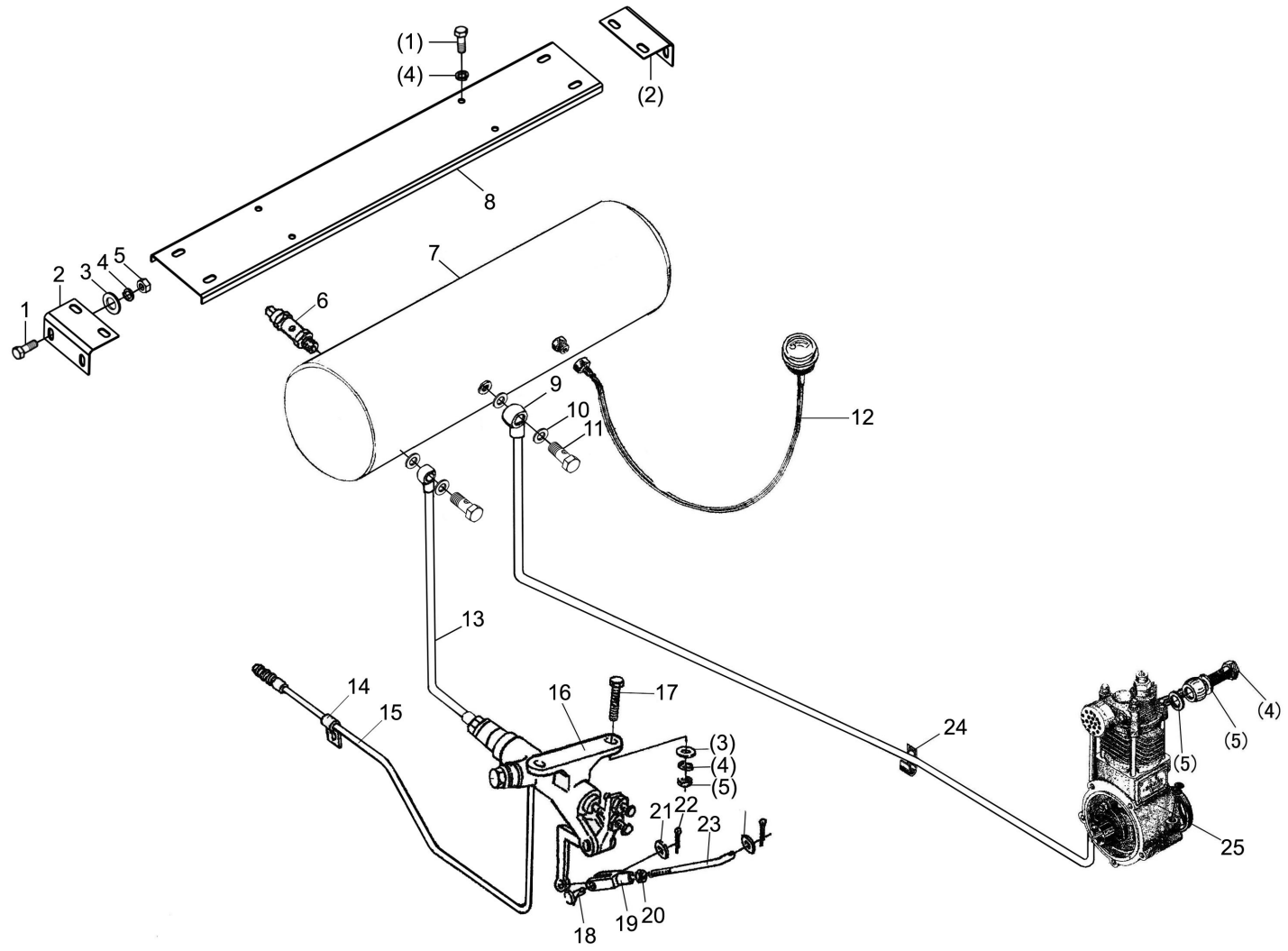
Suspension Mechanism Assembly

序号 Ser. No.	代 号 Part No.	名 称 Name	数量 Qty.
1	300.56.184	提升杆连接销	2
2	300.56.018	斜拉杆上端焊接总成	2
3	184.56.102	弹簧锁销	6
4	300.56.023	上拉杆后连接销及锁销总成	1
	160.56.014	锁销总成	1
		镀锌铁丝链14#	2
	300.56.127	上拉杆后连接销	1
	300.56.128	连接环	1
	300.56.129	连接圆环	1
5	300.56.020	上拉杆后调节杆总成	1
	300.56.122	上拉杆后调节杆	1
	160.56.110	上拉杆球形接头	1
7	300.56.022-1	上拉杆调节螺管焊合件	1
8	GB/T7940.1	直通式压注油杯M10×1	3
9	300.56.021	上拉杆前调节杆总成	1
10	GB/T6170	螺母M22-左	2
11	300.56.105	提升杆螺管	2
12	GB/T6170	螺母M22	2
13	300.56.019	斜拉杆下端焊接总成	2
14	300.56.015	右下拉杆带锁销总成	1
	300.56.028	右下拉杆总成	1
	160.56.014	锁销总成	1
		镀锌铁丝链14#	1

续. 悬挂机构总成

Cont. Suspension Mechanism Assembly

序号 Ser. No.	代 号 Part No.	名 称	Name	数量 Qty.
	GB/T91	销5×22	Split pin 5×22	1
15	GB/T882	销轴B16×50	Axis pin B16×50	2
16	GB/T6170	螺母M14	Nut M14	2
17	GB/T93	垫圈14	Plain washer 14	2
18	300.56.048	下拉杆限位链总成	Limit chain asseby lower link	1
	300.56.144	下拉杆限位链链环	Chain ring,lower link	13
	300.56.145	下拉杆限位链固定螺栓	Fixing bolt,lower link	2
19	300.56.012	左下拉杆带锁销总成	Left lower link assembly with lock pin	1
	300.56.024	左下拉杆总成	Left lower link asseby	1
	160.56.014	锁销总成	Lock pin assembly	1
		镀锌铁丝链14#	Zinc-coated iron wire chain 14#	1
	GB/T91	销5×22	Split pin 5×22	1
20	GB/T6170	螺母M16	Nut 16	2
21	GB/T93-1987	垫圈16	Plain washer 16	2
22	300.56.017A	外置式限位链总成	External limit assembly	2
	300.56.035	限位链调节杆焊合件 I	Adjusting bolt assembly I	1
	300.56.036	限位链调节杆焊合件 II	Adjusting bolt assembly II	1
	300.56.220	限位链螺管	Adjusting rod	1
	GB/T6170	螺母M22-左	Nut M22-Lift	1
	GB/T6170	螺母M22	Nut M22	1
23	GB/T95	垫圈10	Plain washer 10	2
24	GB/T882	销轴B10×40	Clevis pin with head B10×40	2
25	300.56.301	限位链拉板	External limit chain	2



气制动总成
Air Brake Assembly

气制动总成

Air Brake Assembly

序号 Ser. No.	代 号 Part No.	名 称	Name	数量 Qty.
1	GB/T5783	螺栓M8×20	Bolt M8×20	8
2	300.80.322	联接板	Connecting plate	2
3	GB/T97.1	垫圈8	Washer 8	10
4	GB/T93	垫圈8	Washer 8	10
5	GB/T6170	螺母M8	Nut M8	6
6	180.50.021	安全阀总成	Ssfety valve assembly	1
7	300.80.012B-1	储气筒焊接总成	Air tank weldment	1
8	300.80.321	储气筒支承板	Air tank plate	1
9	300.80.021B	出气管总成(配TY395 / TY3100柴油机)	Outlet pipe assembly(For TY395 /3100 engine)	1
	300.80.021C	出气管总成((配SL2105ABT柴油机)	Outlet pipe assembly(For SL2105ABT engine)	1
	300.80.021D	出气管总成((配ZN390柴油机)	Outlet pipe assembly(For ZN390 engine)	1
	300.80.021E	出气管总成((配ZN490 柴油机)	Outlet pipe assembly(For ZN490 engine)	1
	300.80.021F	出气管总成((配4L22BT柴油机)	Outlet pipe assembly(For 4L22BT engine)	1
10	180.50.413	垫圈	Washer	8
11	180.50.412	铰接螺栓	Bolt	4
12	300.80.010	气压表管总成	Air pressure gauge pipe assembly	1
13	300.80.018	制动阀进气管总成	Brake valve inlet pipe assembly	1
14	300.80.315	气管固定板	Tube clamp	1
15	300.80.011	制动管总成	Brake valve air outlet pipe assembly	1
16	180.50.020	制动阀总成	Brake valve assembly	1
17	GB/T5782	螺栓M8×50	Bolt M8×50	2
18	GB/T882	销轴B10×30	Clevis pin with head B10×30	1
19	180.50.411	制动阀调整叉	Brake valve adjusting fork	1