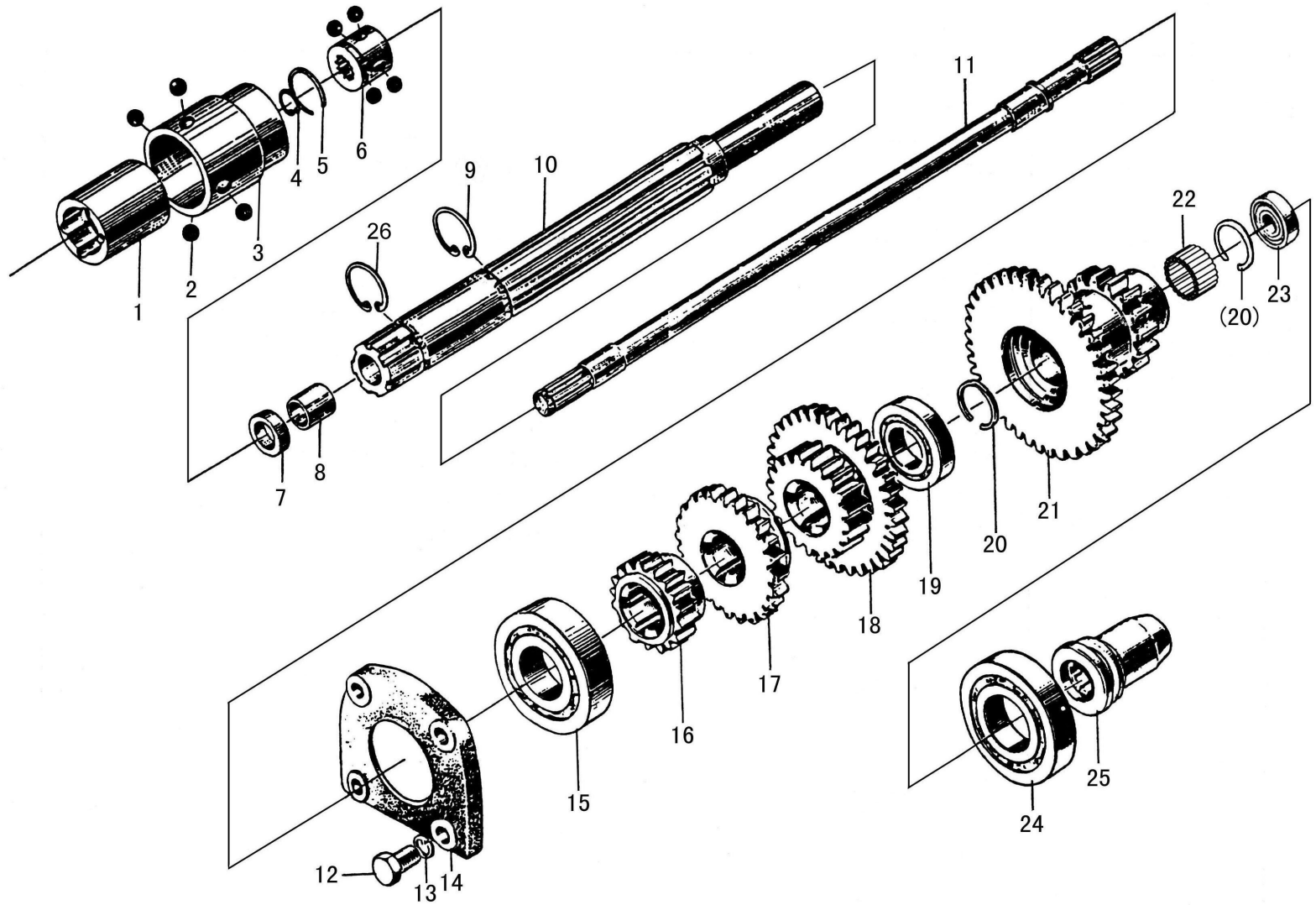


续. 传动箱第一轴(单作用)

Cont. Drive Gearbox Primary Shaft (Single stage clutch)

序号 Ser. No.	代号 Part No.	名称 Name	数量 Qty.
24	GB/T 276	滚动轴承6208	1
25	300.37.136	花键联接套	1



传动箱第一轴（双作用离合器）
Drive Gearbox Primary Shaft (For dual stage clutch)

传动箱第一轴（双作用离合器）

Drive Gearbox Primary Shaft (For dual stage clutch)

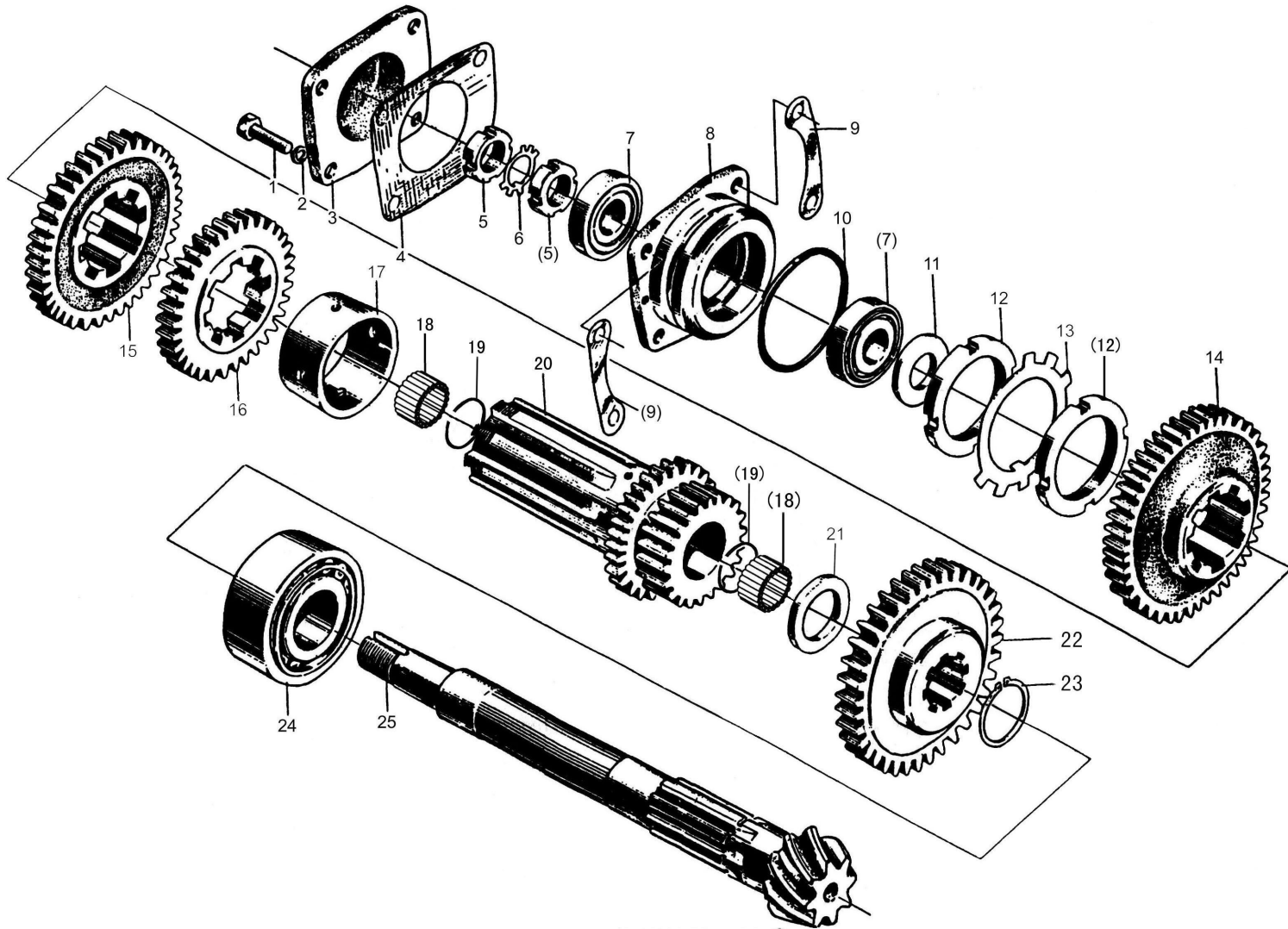
序号 Ser. No.	代号 Part No.	名称	Name	数量 Qty.
1	304.37S.242-1	副离合器联轴节联接套	Connecting sleeve, secondary clutch coupling	1
2	GB/T308	钢球10.3188 G400b	Steel ball 10.3188 G400b	8
3	304.37S.246	主离合器联轴节从动套	Driven sleeve, main clutch coupling	1
4	GB/T894.1	挡圈19	Circlip for shaft 19	1
5	304.37S.243	挡圈	Circlip for shaft	1
6	304.37S.244	副离合器联轴节从动套	Driven sleeve, secondary clutch coupling	1
7	304.37S.245-1	轴套	Shaft sleeve	1
8	304.21S.142-1	复合衬套	Compound bush	1
9	GB/T894.1	挡圈40	Circlip for shaft 40	1
10	304.37S.188-1	第一轴	Primary shaft	1
11	304.37S.240-1	动力输出传动轴	P.T.O. driving shaft	1
12	GB/T5783	螺栓M10×25	Bolt M10×25	4
13	GB/T93	垫圈10	Washer 10	4
14	304.37S.119	一轴前轴承盖	Primary shaft front bearing cap	1
15	GB/T276	滚动轴承6208	Rolling bearing 6208	1
16	304.37S.104	I -倒档滑动齿轮	Sliding gear, 1st reverse speed	1
17	304.37S.106	Ⅲ档滑动齿轮	Sliding gear, 3rd speed	1
18	304.37S.108	Ⅱ-Ⅳ档滑动齿轮	Sliding gear, 2nd-4th speed	1
19	GB/T276	滚动轴承6007	Rolling bearing 6007	1
20	GB/T895.1	挡圈38	Circlip for shaft 38	2
21	304.37S.111-1	高低档双联齿轮	Twin gear high-low speed	1
22	非标准(Non-standard)	滚针轴承K32×38×26	Needle roller bearingK 32×38×26	1

△适量 Just right amount

续. 传动箱第一轴 (双作用离合器)

Cont. Drive Gearbox Primary Shaft (For dual stage clutch)

序号 Ser. No.	代号 Part No.	名称 Name	数量 Qty.
23	GB/T276	滚动轴承6004	1
24	GB/T276	滚动轴承6010	1
25	300.37.136	花键联结套	1
26	304.21S.150	挡圈40	1



传动箱第二轴(单作用)
Drive Gearbox Main Shaft (Single Stage Clutch)

传动箱第二轴(单作用)

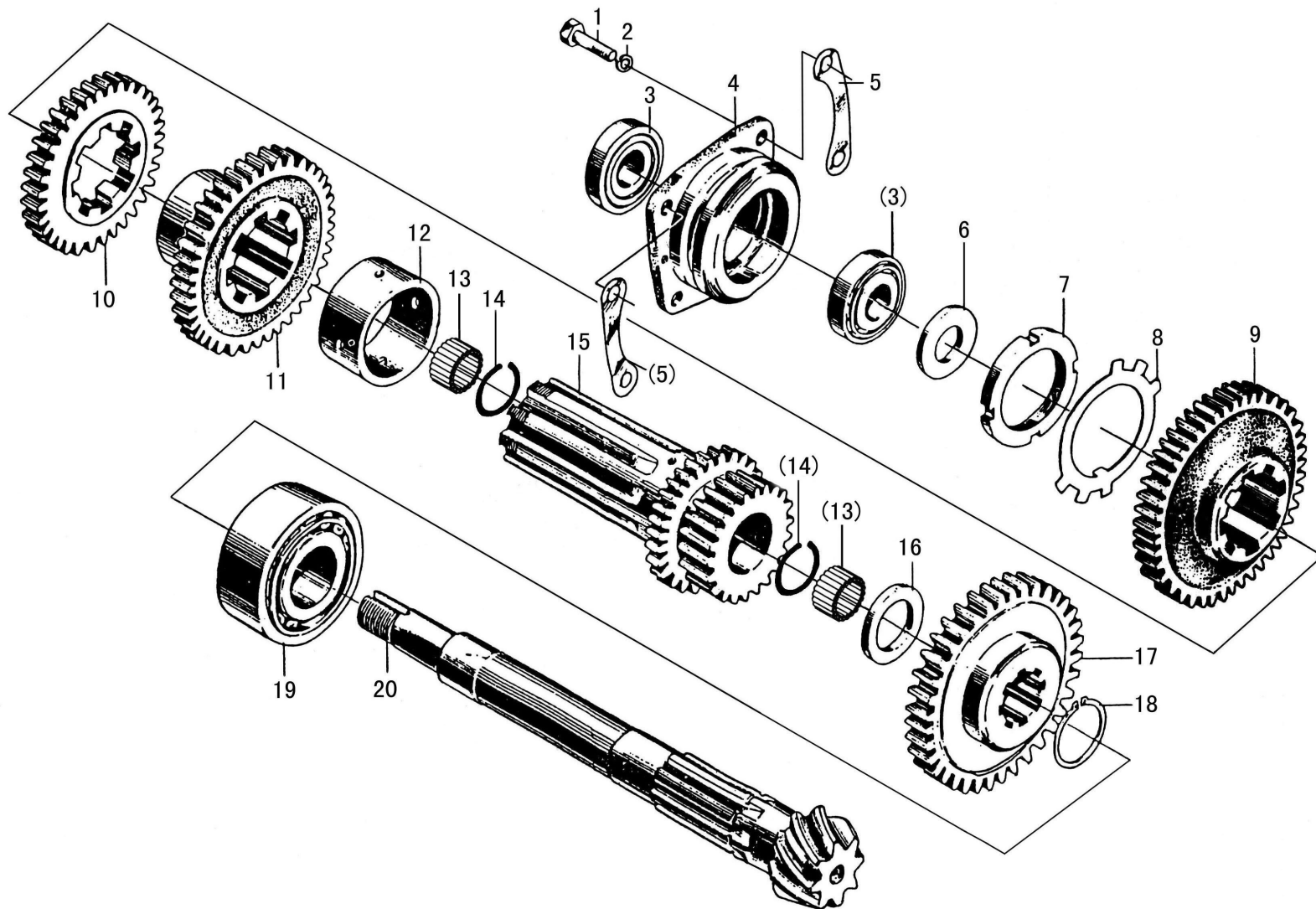
Drive gearbox Main Shaft (Single stage clutch)

序号 Ser. No.	代号 Part No.	名称	Name	数量 Qty.
1	GB/T5783	螺栓M10×35	Bolt M10×25	4
2	GB/T93	垫圈10	Spring lock washer 10	4
3	300.37.135	二轴前轴承盖	Main shaft front bearing cap	1
4	300.37.170	二轴前端盖垫片	Gasket,main shaft front end cap	1
5	GB/T812	螺母M24×1.5	Nut M24×1.5	2
6	GB/T858	垫圈24	Washer 24	1
7	GB/T297	滚动轴承31305	Rolling bearing 31305	2
8	300.37.117	二轴前轴承套	Front bearing sleeve,main shaft	1
9	300.37.132	二轴调整垫片	Adjusting shim,main shaft	△
10	GB/T3452.1	O形密封圈80×5.3	O-ring 80×5.3	1
11	300.37.151	二轴前止推环	Front thrust ring,main shaft	1
12	300.37.317	圆螺母M60×2	Round nut M60×2	2
13	300.37.430	圆螺母用止动垫圈	Washer	1
14	300.37.105	I 档从动齿轮	Driven gear,1st speed	1
15	300.37.107	II 档从动齿轮	Driven gear,2st speed	1
16	300.37.109	III 档从动齿轮	Driven gear,3st speed	1
17	300.37.142	二轴隔离套	Spacing sleeve,main shaft	1
18	非标准(Non-standard)	滚针轴承K31×37×28	Needle roller bearing K31×37×28	2
19	300.37.407	挡圈37	Circlip 37	2
20	300.37.110	二轴花键套	Spline sleeve,main shaft	1
21	300.37.152	二轴后止推环	Rear thrust ring,main shaft	1
22	300.37.134	高低档滑动齿轮	Sliding gear,high-low speed	1
	300.37.134A	高低档滑动齿轮(可选)	Sliding gear,high-low speed (Selected)	1

续. 传动箱第二轴(单作用)

Cont. Drive gearbox Main Shaft (Single stage clutch)

序号 Ser. No.	代号 Part No.	名称	Name	数量 Qty.
23	300.37.431	挡圈38	Circlip for shaft 38	1
24	GB/T283	滚动轴承NUP2308	Rolling bearing NUP2308	1
25	300.37.101	第二轴	Main shaft	1



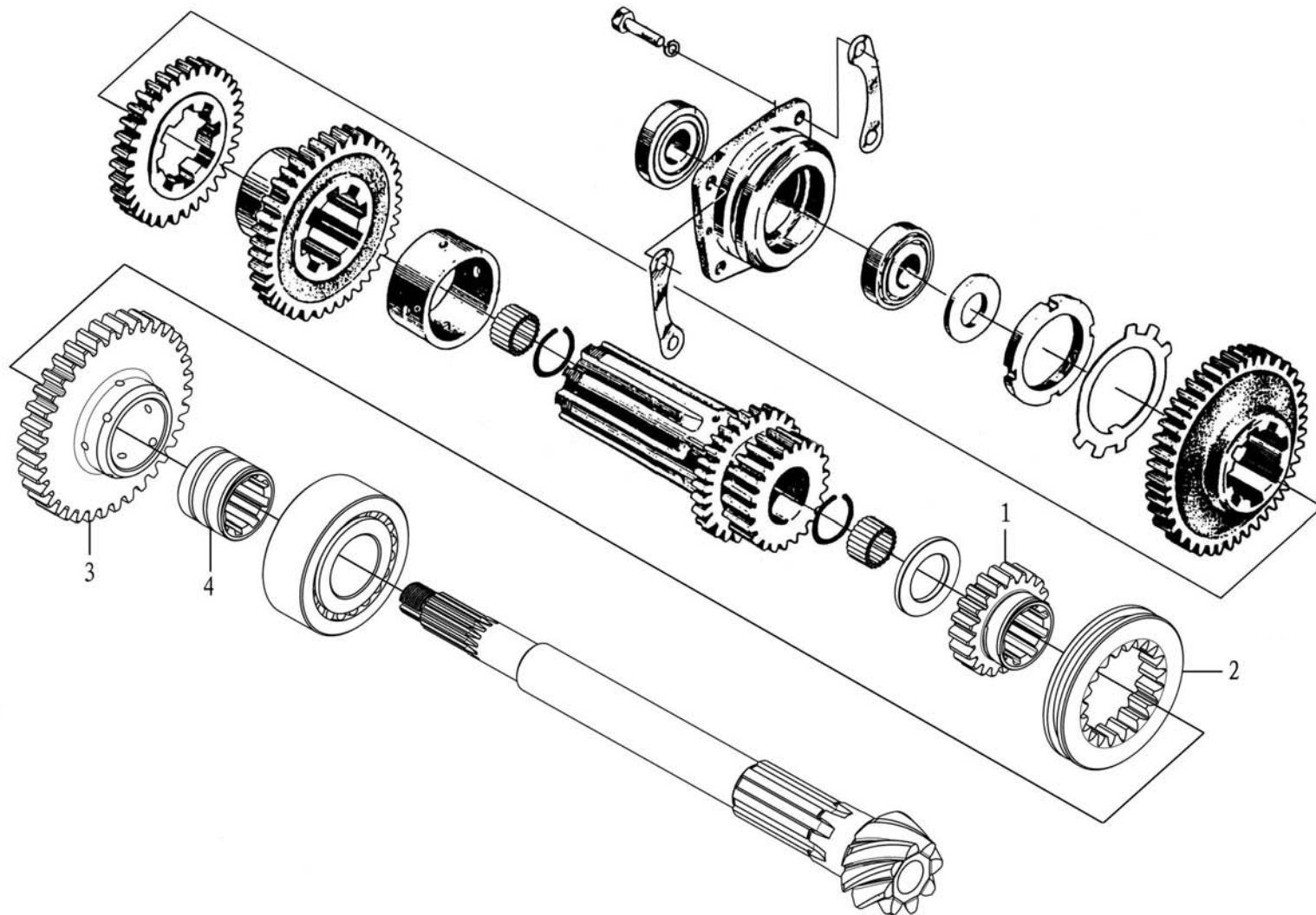
传动箱第二轴 (双作用离合器)
 Drive Gearbox Main Shaft (For dual stage clutch)

传动箱第二轴（双作用离合器）

Drive Gearbox Main Shaft (For dual stage clutch)

序号 Ser. No.	代号 Part No.	名称	Name	数量 Qty.
1	GB/T5783	螺栓M10×35	Bolt M10×35	4
2	GB/T93	垫圈10	Spring lock washer 10	4
3	GB/T297	滚动轴承31305	Rolling bearing 31305	2
4	304.37S.117	二轴前轴承套	Front bearing sleeve, main shaft	1
5	300.37.132	二轴调整垫片0.1/0.2/0.5	Adjusting shim 0.1/0.2/.05, main shaft	△
6	304.37S.151	二轴前止推环	Front thrust ring, main shaft	1
7	GB/T810	小圆螺母M60×2	Round nut M60×2	1
8	300.37.430	圆螺母用止动垫圈	Washer	1
9	304.37S.105	I 档从动齿轮	Driven gear, 1st speed	1
10	304.37S.109	III 档从动齿轮	Driven gear, 3rd speed	1
11	304.37S.107	II 档从动齿轮	Driven gear, 2nd speed	1
12	304.37S.142	二轴隔离套	Spacing sleeve, main shaft	1
13	非标准(Non-standard)	滚针轴承K31×37×28	Needle roller bearing 31×37×28	2
14	300.37.407	挡圈37	Circlip for shaft 37	2
15	304.37S.110	二轴花键套	Spline sleeve, main shaft	1
16	300.37.152	二轴后止推环	Rear thrust ring, main shaft	1
17	304.37S.112A-1	高低档滑动齿轮	Sliding gear, high-low speed	1
18	300.37.431	挡圈38	Circlip for shaft 38	1
19	GB/T288	调心滚子轴承22308	Self-aligning roller bearing 22308	1
20	304.37S.101	第二轴	Main shaft	1

△适量 Just right amount



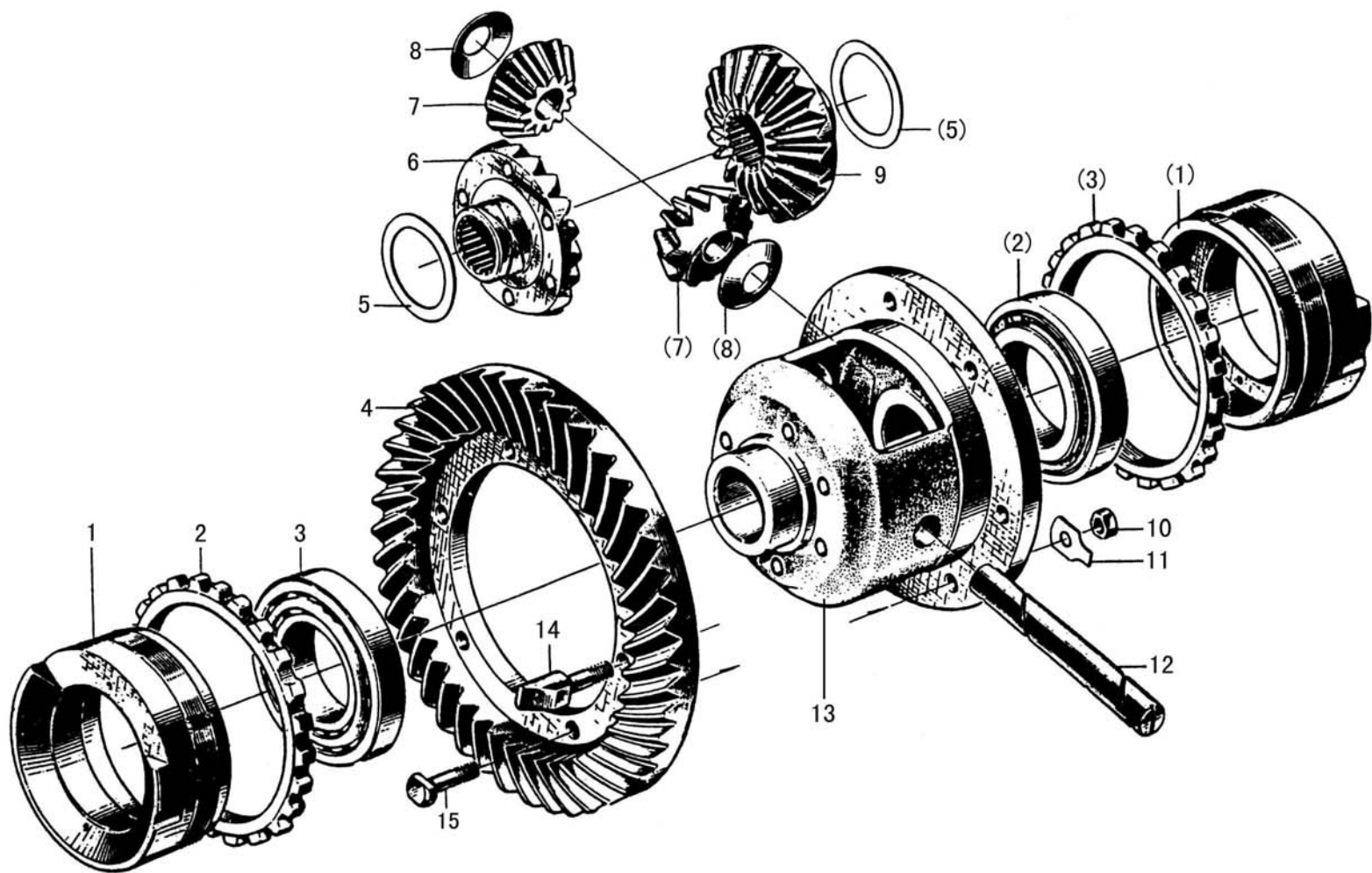
传动箱第二轴 (防掉档)
Drive Gearbox Main Shaft

传动箱第二轴（防掉档）

Drive Gearbox Main Shaft ()

序号 Ser. No.	代号 Part No.	名称	Name	数量 Qty.
1	300.37.261	高低档固定齿座	High garde fixed gear	1
	304.37S.220	高低档固定齿座	High garde fixed gear	1
2	300.37.262	高低档啮合套	High garde meshing sets	1
	304.37S.221	高低档啮合套	High garde meshing sets	1
3	300.37.134-1	低档从动齿轮	Cheap driven gear	1
	304.37S.112-1	低档从动齿轮	Cheap driven gear	1
4	300.37.263	低档从动齿轮衬套	Cheap driven gear bushing	1
5	GB/T283	轴承NUP2308	Rolling bearing NUP2308	1

除标注零件外其余第二轴零件不变

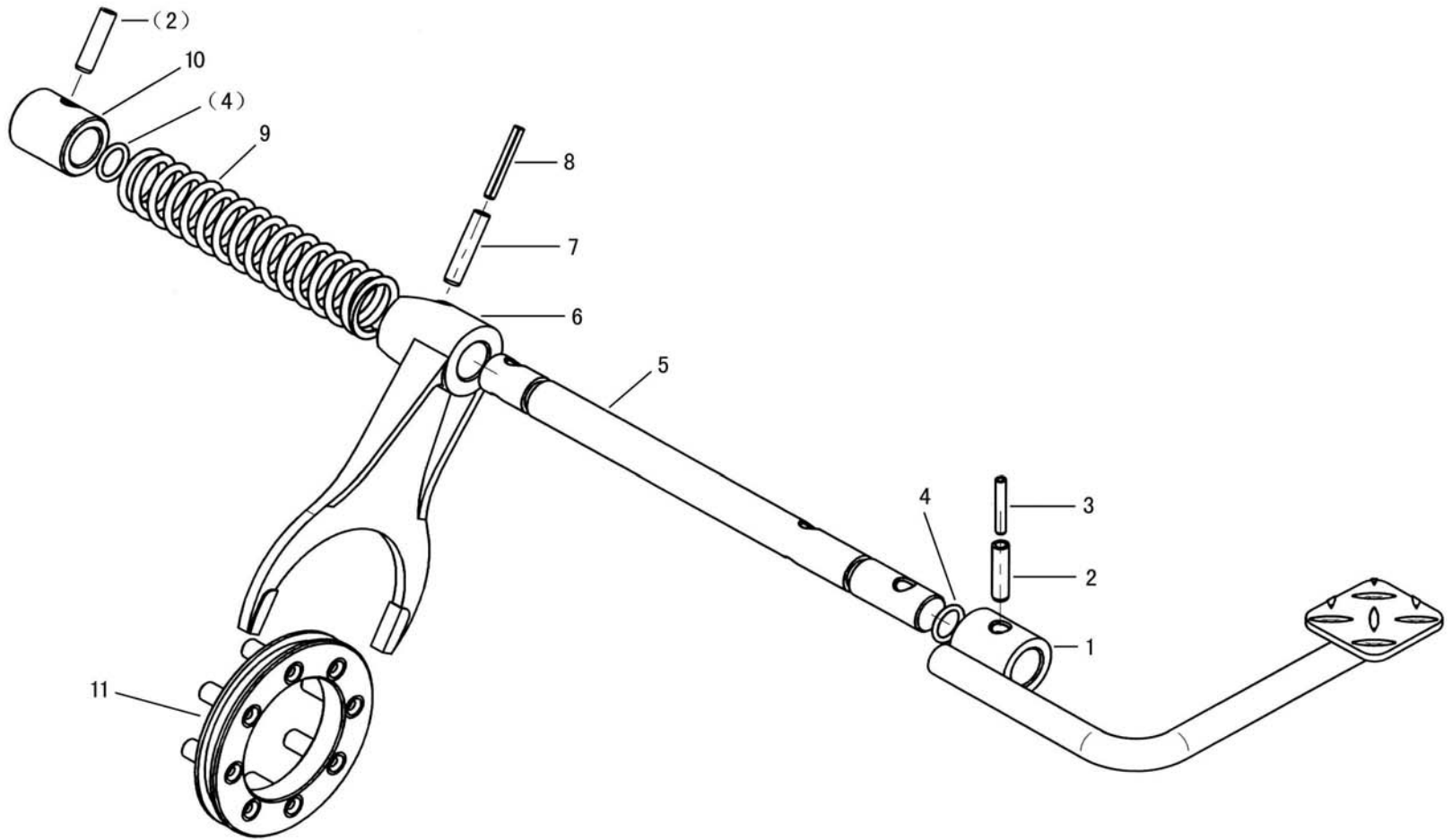


差速器
Differential

差速器

Differential

序号 Ser. No.	代 号 Part No.	名 称 Name	数量 Qty.
1	300.37.164	差速器轴承座	2
2	300.37.150	差速器调整螺母	2
3	GB/T297	圆锥滚子轴承30212	2
4	300.37.180-1	大圆锥齿轮	1
5	300.37.184-1	半轴齿轮垫片	2
6	300.37.182	右半轴齿轮	1
7	300.37.201	行星齿轮	2
8	300.37.185-1	行星齿轮垫片	2
9	300.37.181	左半轴齿轮	1
10	GB/T6170	螺母M10	6
11	GB/T855	垫圈10	6
12	300.37.183-1	行星齿轮轴	1
13	300.37.179-1	差速器壳	1
14	300.37.205-1	止推螺栓	2
15	300.37.187	大圆锥齿轮螺栓	4

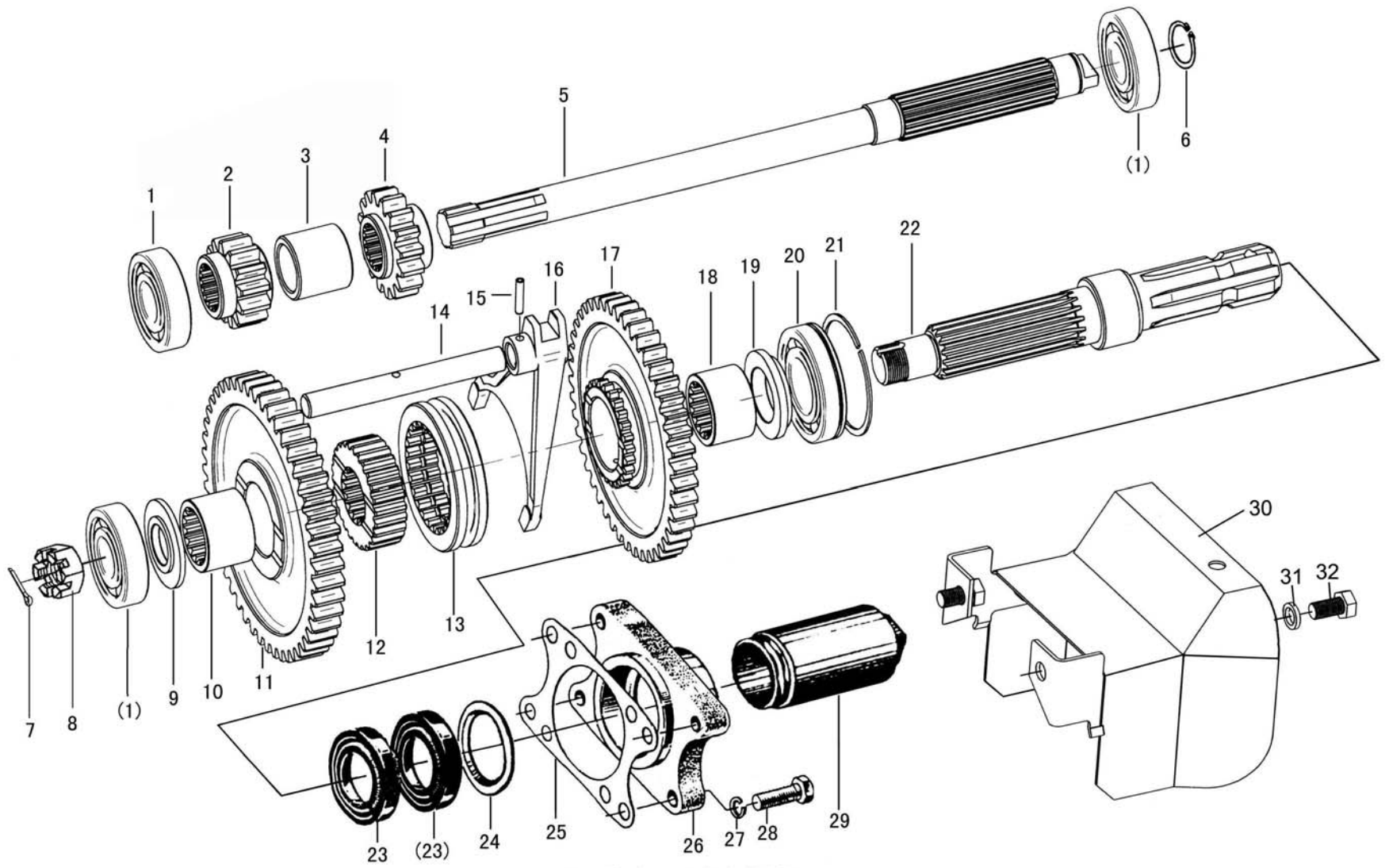


差速锁
Differential Lock

差速锁

Differential Lock

序号 Ser. No.	代 号 Part No.	名 称	Name	数量 Qty.
1	300.37.015	差速锁踏板焊合件	Pedal	1
2	GB/T879	销8×32	Pin 8×32	2
3	GB/T879	销5×32	Pin 5×32	1
4	GB3452.1	O形密封圈15×2.65	O-ring 15×2.65	2
5	300.37.222	差速锁拨叉轴	Fork shaft	1
6	300.37.221	差速锁拨叉	Fork	1
7	GB/T879	销8×40	Pin 8×40	1
8	GB/T879	销5×40	Pin 5×40	1
9	300.37.223	差速锁回位弹簧	Spring	1
10	300.37.224	轴套	Bush	1
11	300.37.013	差速锁总成	Differential lock	1



动力输出 (啮合套换档)
Power Take-off (Meshing sleeve shift)

动力输出（啮合套换挡）

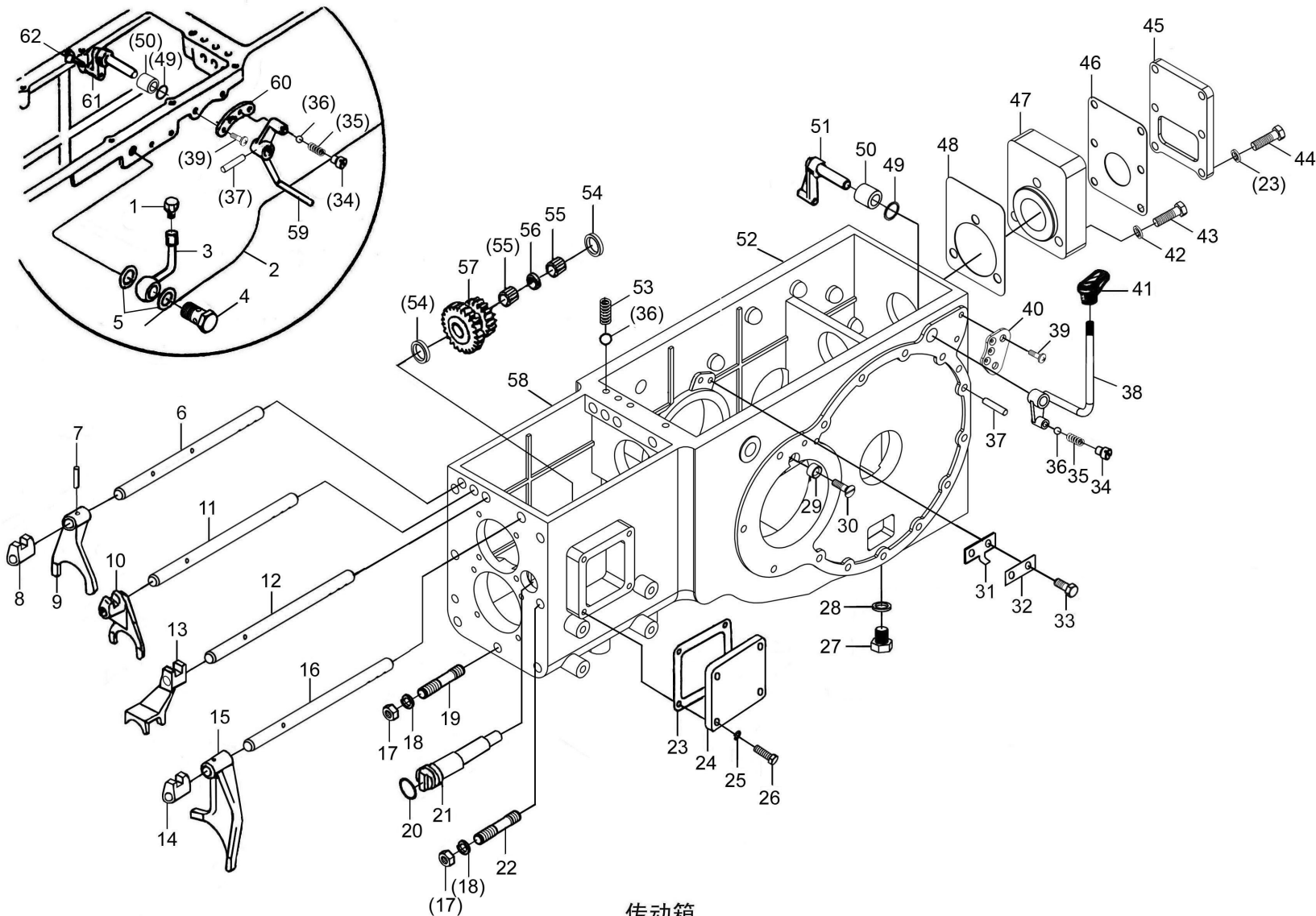
Power Take-Off (Meshing sleeve shift)

序号 Ser. No.	代 号 Part No.	名 称	Name	数量 Qty.
1	GB/T276	滚动轴承6305	Rolling bearing 6305	3
2	300.37.251	动力输出低速主动齿轮(540r/min)	P.T.O. low speed driving gear (540r/min)	1
3	300.37.253	隔套	Spacing sleeve	1
4	300.37.252	动力输出高速主动齿轮(720r/min)	P.T.O. high speed driving gear (720r/min)	1
5	300.37.102-2	输出主动轴	P.T.O. driving shaft	1
6	GB/T894.1	挡圈25	Circlip for shaft 25	1
7	GB/T91	开口销5×40	Pin 5×40	1
8	GB/T9459	六角开槽薄螺母M24×2	Nut M24×2	1
9	300.37.254	动力输出轴前止推环	Front thrust ring,P.T.O shaft	1
10	300.37.255	输出低速齿轮滑套	Sliding sleeve	1
11	300.37.116-1	动力输出低速从动齿轮(540r/min)	P.T.O. low speed gear (540r/min)	1
12	300.37.257	啮合套座	Seat	1
13	300.37.258	啮合套	Sleeve	1
14	300.37.260	动力输出拨叉轴	Shaft	1
15	GB/T879	销5×24	Pin 5×24	1
16	300.37.259	动力输出轴拨叉	Fork	1
17	300.37.115-1	动力输出高速从动齿轮(720r/min)	P.T.O. high speed gear (720r/min)	1
18	300.37.256	输出高速齿轮滑套	Sliding sleeve	1
19	300.37.155-1	输出轴后止推环	Rear thrust ring,P.T.O shaft	1
20	GB/T276	滚动轴承6207N	Rolling bearing 6207N	1
21	GB/T305	止动环72	Snap ring 72	1
22	300.37.103A-2	动力输出轴(6-34.79×28.91×8.69)	P.T.O. shaft (6-34.79×28.91×8.69)	1
	300.37.103-2	动力输出轴 (8-38×31.4×6)	P.T.O. shaft (8-38×31.4×6)	1

续. 动力输出 (啮合套换挡)

Cont. Power Take-Off (Meshing sleeve shift)

序号 Ser. No.	代号 Part No.	名称	Name	数量 Qty.
23	GB/T9877.1	油封FB45×65×8	Oil seal FB45×65×8	2
24	300.37.184-1	半轴齿轮垫片	Washer,differential side gear	1
25	300.37.172	后端盖垫片	Gasket,rear end cover	1
26	300.37.118A-1	输出轴后端盖	Rear end cover P.T.O.shaft	1
27	GB/T93	垫圈10	Spring lock washer 10	4
28	GB/T5783	螺栓M10×35	Bolt M10×35	4
29	160.37.159-1	动力输出轴保护罩	P.T.O.shaft guard	1
30	300.47.060-1	动力输出轴防护罩焊合件	P.T.O.shaft guard	1
31	GB/T93	垫圈16	Washer 16	2
32	GB/T5783	螺栓M16×30	Bolt M16×30	2



传动箱
Drive Gearbox

传动箱

Drive Gearbox

序号 Ser. No.	代号 Part No.	名称	Name	数量 Qty.
1	184.31.060	呼吸器总成	Vent pipe cap	1
2	300.37.176-1	传动箱体	Drive gearbox body	1
3	300.37.023-1	通气管焊合件	Breather pipe weldment	1
4	300.37.307	通气管螺钉	Screw, oil outlet pipe	1
5		复合垫圈16	Compound washer 16	2
6	300.37.128-1	Ⅲ-Ⅳ档拨叉轴	3nd-4th shift fork shaft	1
7	GB/T 879	销5×24	Pin 5×24	8
8	300.37.137	Ⅲ-Ⅳ档拨头	3nd-4th shift fork head	1
9	300.37.121	Ⅰ档拨叉	1th shift fork	1
10	300.37.122	Ⅱ-倒档拨叉	2nd-reverse shift fork	1
11	300.37.127-1	Ⅱ-倒档拨叉轴	2nd-reverse shift fork shaft	1
12	300.37.121	Ⅰ档档拨叉	1st shift fork	1
13	300.37.126-1	Ⅰ档拨叉轴	1st shift fork shaft	1
14	300.37.138	高低档拨头	High-low shift fork head	1
15	300.37.124	高低档拨叉	High-low shift fork	1
16	300.37.129-1	高低档拨叉轴	High-low shift fork shaft	1
17	GB/T 6176	螺母M14×1.5	Nut M14×1.5	1
18	GB/T 93	垫圈14	Spring lock washer 14	7
19	GB/T 898	螺柱AM14-M14×1.5×75	Stud AM14-M14×1.5×75	7
20	GB/T 3452.1	O形密封圈25.8×3.55	O-ring 25.8×3.55	7
21	304.37S.120	倒档轴	Reverse shaft	1
22	GB/T 898	螺柱AM14-M14×1.5×50	Stud AM14-M14×1.5×50	1
23	300.37.306	垫片	Gasket	4
				1