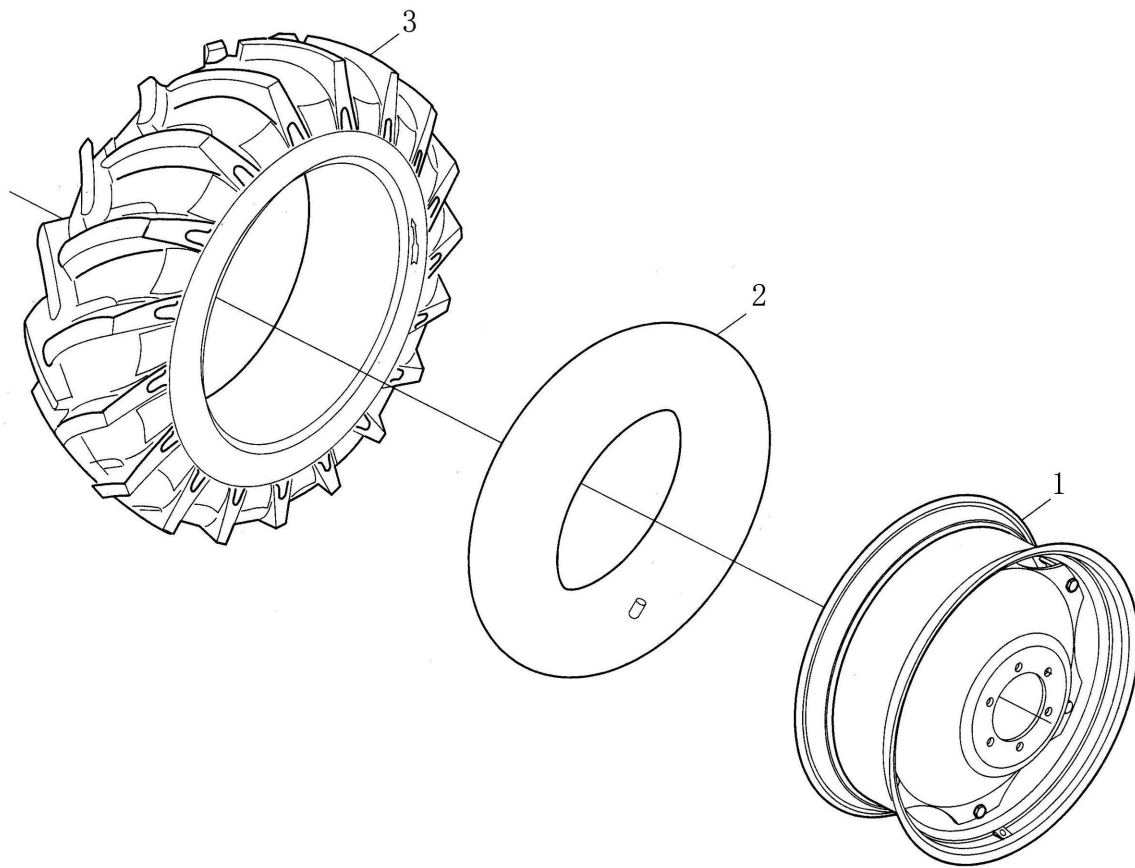


## 导向轮

### Directive Wheel

序号 Ser. No.	代号 Part No.	名称 Name	数量 Qty.
1	GB/T2979	外胎5.00-15 -----① Tyre 5.00-15	2
	GB/T2979	外胎6.00-16 -----② Tyre 6.00-16	2
	非标准(Non-standard)	草地胎外胎-----③ Lawn Tyre (for gardening tractor )	2
2	GB/T2979	内胎5.00-15-----① Tube 5.00-15	2
	GB/T2979	内胎6.00-16-----② Tube 6.00-16	2
	非标准(Non-standard)	草地胎内胎-----③ Lawn Tube (for gardening tractor )	2
3	300.32.011	导向轮轮辋焊合件-----① Rim assembly directive wheel	2
	400.32.011	导向轮轮辋焊合件-----② Rim assembly directive wheel	2
	300.32.011A	草地胎导向轮轮辋焊合件 -----③ Rim assembly directive wheel	2

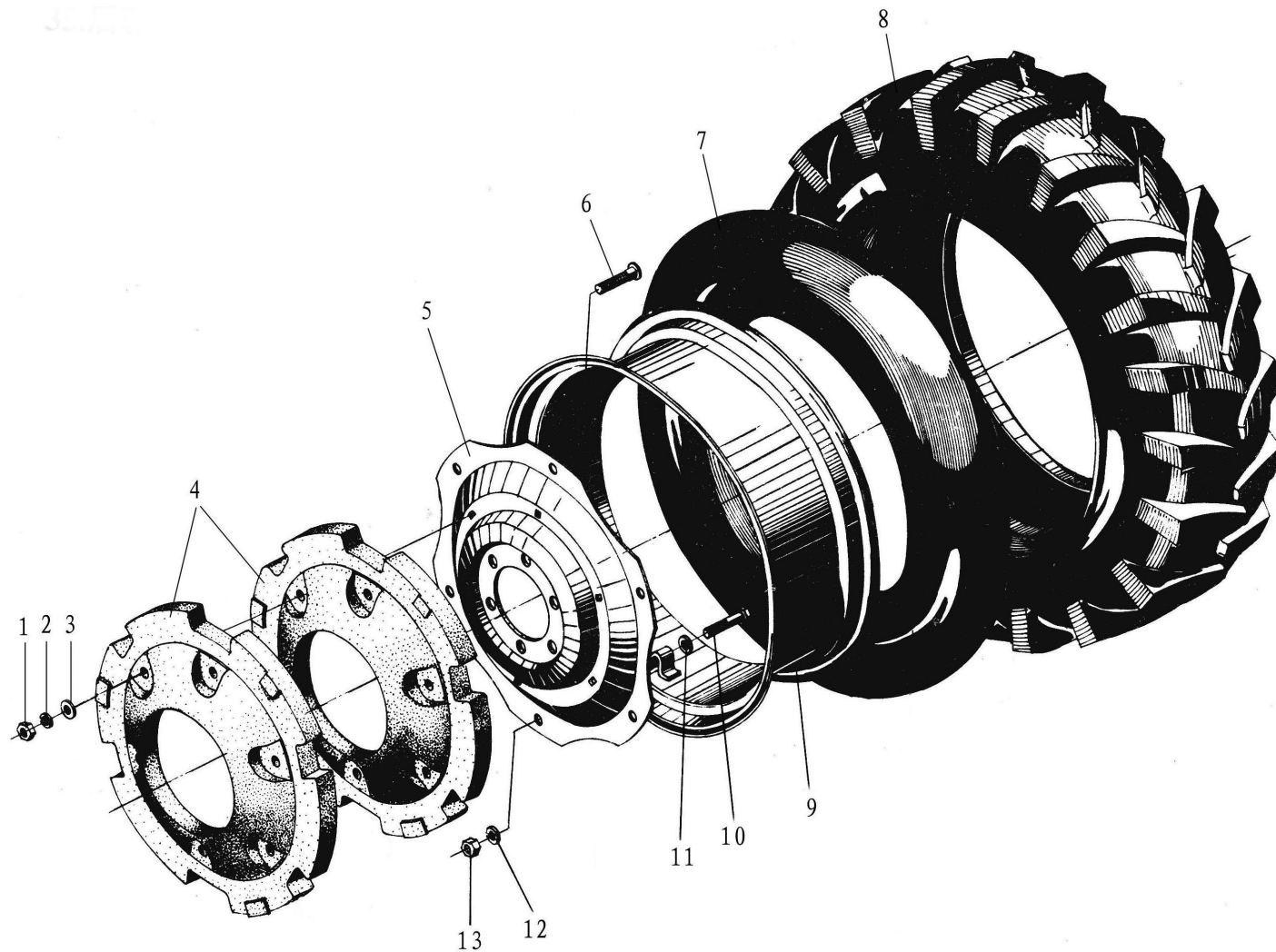


前驱动轮  
Front Driving Wheel

前驱动轮（四轮驱动）

Front driving wheel ( Four wheel drive )

序号 Ser. No.	代号 Part No.	名称	Name	数量 Qty.
1	304.32.011	前驱动轮轮辋总成-----①	Rim assembly,front driving wheel	2
	304.32.011B	前驱动轮轮辋总成-----②③	Rim assembly,front driving wheel	2
	304.32.011A	草地胎前驱动轮轮辋焊合件-----④	Rim assembly,front driving wheel (for gardening tractor )	2
2	GB/T 2979	6.00-16 前驱动轮内胎-----①	Tube 6.00-16	2
	GB/T 2979	7.50-16 前驱动轮内胎-----②	Tube 7.50-16	2
	GB/T 29799	6.50-16 水田前驱动轮内胎-----③	Tube 6.50-16(for paddyfield tractor )	2
	非标准(Non-standard)	草地胎内胎-----④	Lawn Tube (for gardening tractor )	2
3	GB/T 2979	6.00-16 前驱动轮外胎-----①	Tyre 6.00-16	2
	GB/T 2979	7.50-16 前驱动轮外胎-----②	Tyre 7.50-16	2
	GB/T 2979	6.50-16 水田前驱动轮外胎-----③	Tyre 6.50-16(for paddyfield tractor )	2
	非标准(Non-standard)	草地胎外胎-----④	Lawn Tire (for gardening tractor )	2

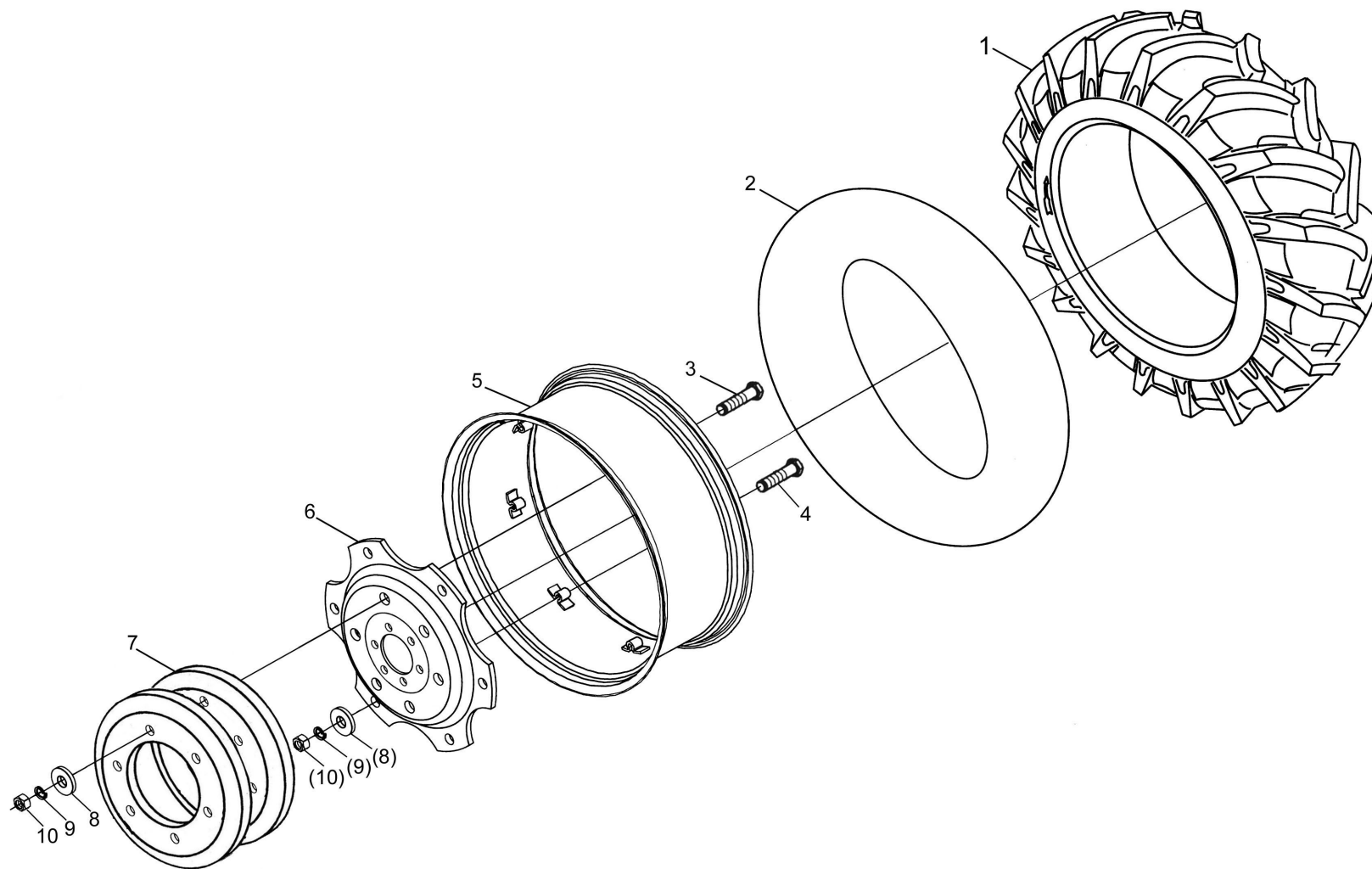


驱动轮  
Driving Wheel

## 驱动轮

### Driving Wheel

序号 Ser. No.	代号 Part No.	名称	Name	数量 Qty.
1	GB/T6170	螺母M12	Nut M12	12
2	GB/T93	垫圈12	Washer 12	12
3	GB/T96	大垫圈12	Big washer 12	12
4	300.34.108-2	驱动轮配重铁	Ballast	2/4
5	300.34.103	驱动轮辐板——①②③④	Spoke,driving wheel	2
	300.34.103C	驱动轮辐板(配草地胎)——⑤	Spoke,driving wheel (for gardening tractor )	2
6	GB/T12	螺栓M12×100	Bolt M12×100	12
	GB/T12	螺栓M12×60	Bolt M12×60	12
7	GB/T2979	驱动轮内胎11.2-24——①	Tube 11.2-24	2
	GB/T2979	水田轮内胎11.2-24——②	Tube 11.2-24 (for paddyfield tractor )	2
		水田轮内胎9.5-24——③	Tube 9.5-24 (for paddyfield tractor )	2
	非标准(Non-tandard)	草地胎内胎——④	Tube (for gardening tractor )	2
8	GB/T2979	驱动轮外胎11.2-24——①	Tyre 11.2-24	2
	GB/T2979	水田轮外胎11.2-24——②	Tyre 9.5-24	2
		水田轮外胎9.5-24——③	Tyre 9.5-24(for paddyfield tractor )	2
	非标准(Non-tandard)	草地胎外胎——④	Tyre (for gardening tractor )	2
9	300.34.011-1	驱动轮轮辋总成——①②	Rim assembly,driving wheel	2
	300.34.011A-1	驱动轮轮辋总成——③④	Rim assembly,driving wheel	2
	300.34.011C	草地胎驱动轮轮辋焊合件——⑤	Rim assembly (for gardening tractor )	2
10	GB/T5782	螺栓M14×70	Bolt M14×70	12
	300.34.012	钢圈螺栓焊合件	Bolt	12
11	GB/T97.1	垫圈14	Washer 14	12
12	GB/T93	垫圈14	Washer 14	12
13	GB/T6170	螺母M14	Nut M14	12

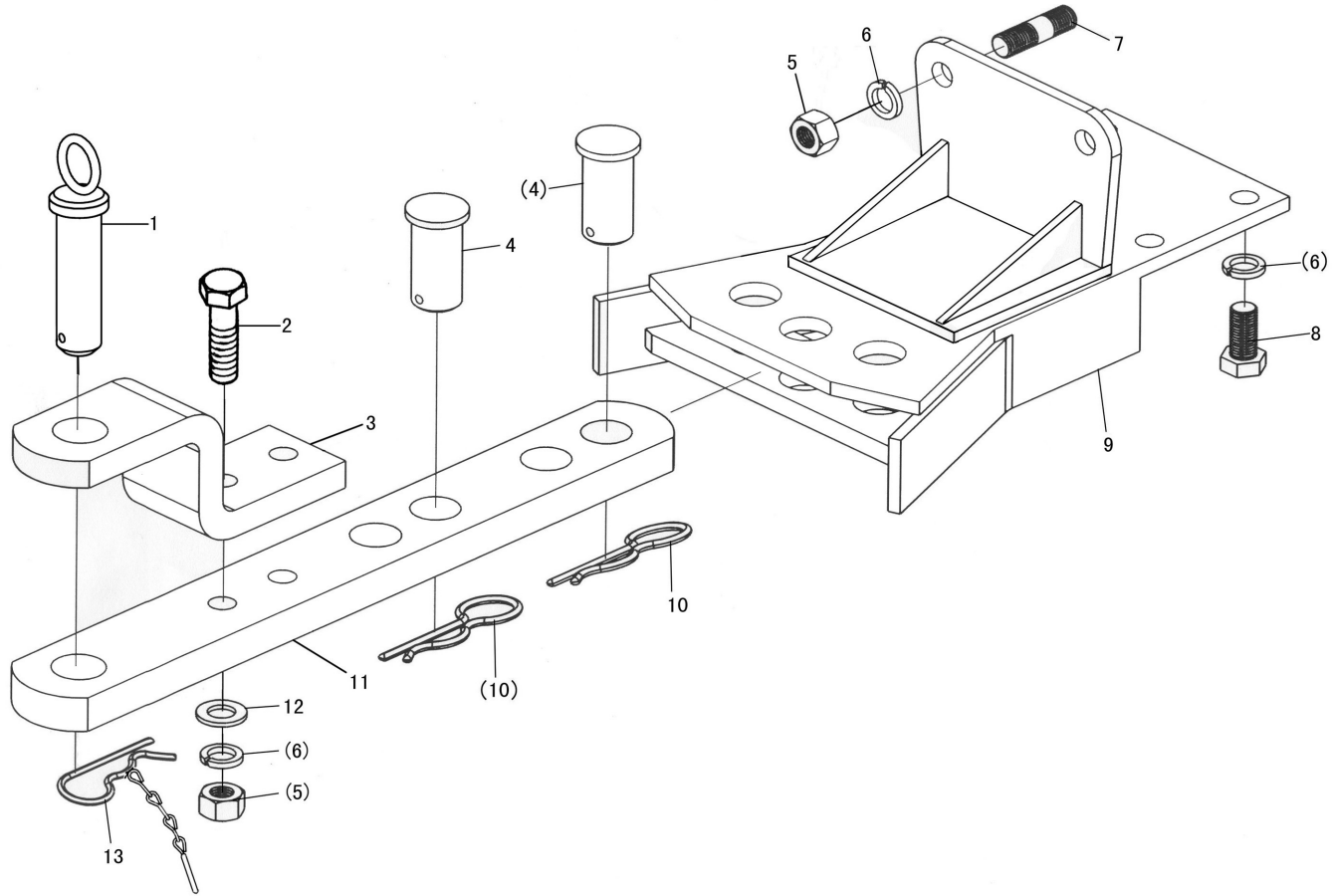


驱动轮 I  
Driving Wheel I

驱动轮 I

Driving Wheel I

序号 Ser. No.	代 号 Part No.	名 称	Name	数量 Qty.
1	GB/T2979	驱动轮外胎11.2-28	Tyre 11.2-28	2
2	GB/T2979	驱动轮内胎11.2-28	Tube 11.2-28	2
3	GB/T12	螺栓M16×60(装一块配重)	Bolt M16×60	6
	GB/T12	螺栓M16×95(装两块配重)	Bolt M16×95	6
4	GB/T12	螺栓M16×80	Bolt M16×80	6
5	400.34.011	驱动轮轮辋焊合件	Rim assembly,driving wheel	2
6	300.34.103B	驱动轮辐板	Spoke,driving wheel	2
7	400.34.105-4	配重铁II	Ballast II	2或4
8	GB/T97.1	垫圈16	Washer 16	24
9	GB/T93	垫圈16	Washer 16	24
10	GB/T6170	螺母M16	Nut M16	24

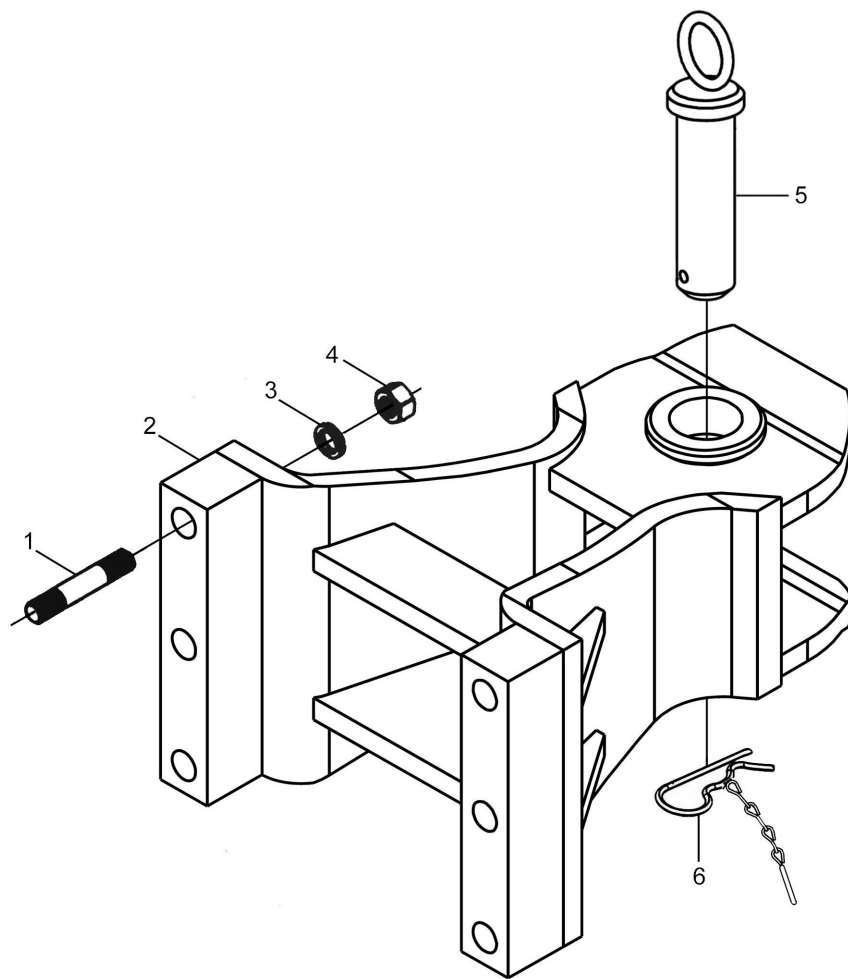


摆式牵引板总成  
Pendulum Drawbar

摆式牵引板总成

Pendulum Drawbar

序号 Ser. No.	代 号 Part No.	名 称	Name	数量 Qty.
1	300E.35.019	后连接销焊合件	Drawbar connecting pin assembly	1
2	GB/T5782	螺栓M16×70	Bolt M16×70	2
3	300E.35.203	弯牵引杆	Drawbar	1
4	300.35.103	牵引销	Drawbar connecting pin	2
5	GB/T6170	螺母M16	Nut M16	4
6	GB/T93	垫圈16	Washer 16	8
7	GB/T898	螺柱AM16-M16×35	Stud AM16-M16×35	2
8	GB/T5783	螺栓M16×35	Bolt M16×35	4
9	300.35.011-1	牵引板焊合件(无钩)	Pendulum Drawbar assembly	1
10	300.35.104	锁销	Lock pin	2
11	300.35.013	牵引杆焊合件	Drawbar	1
12	GB/T97.1	垫圈16	Washer 16	2
13	300E.35.020	弹簧锁销焊合件	Lock pin	1

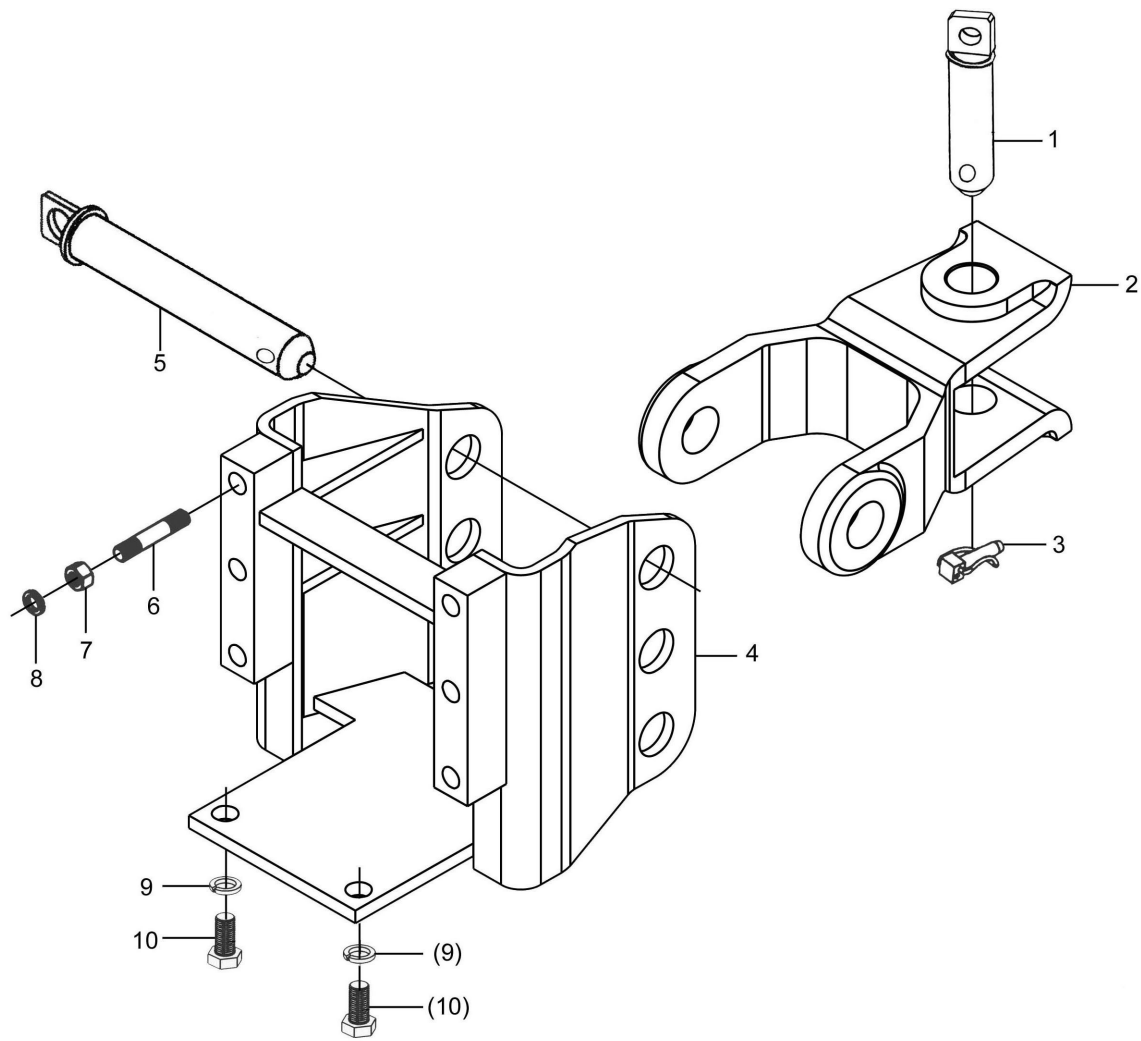


牵引板总成 I  
Drawbar I

牵引板总成 I

Drawbar I

序号 Ser. No.	代 号 Part No.	名 称	Name	数量 Qty.
1	GB/T899	螺柱AM14-M14×1.5×70-8.8	Stud AM14-M14×1.5×70-8.8	6
2	300.56.041B-1	牵引机构焊接总成	Drawbar assembly	1
3	GB/T93	垫圈14	Washer 14	6
4	GB/T6176	螺母M14×1.5	Nut M14×1.5	6
5	300E.35.019	后连接销焊合件	Drawbar connecting pin	1
6	300E.35.020	弹簧锁销焊合件	Spring latch weld	1

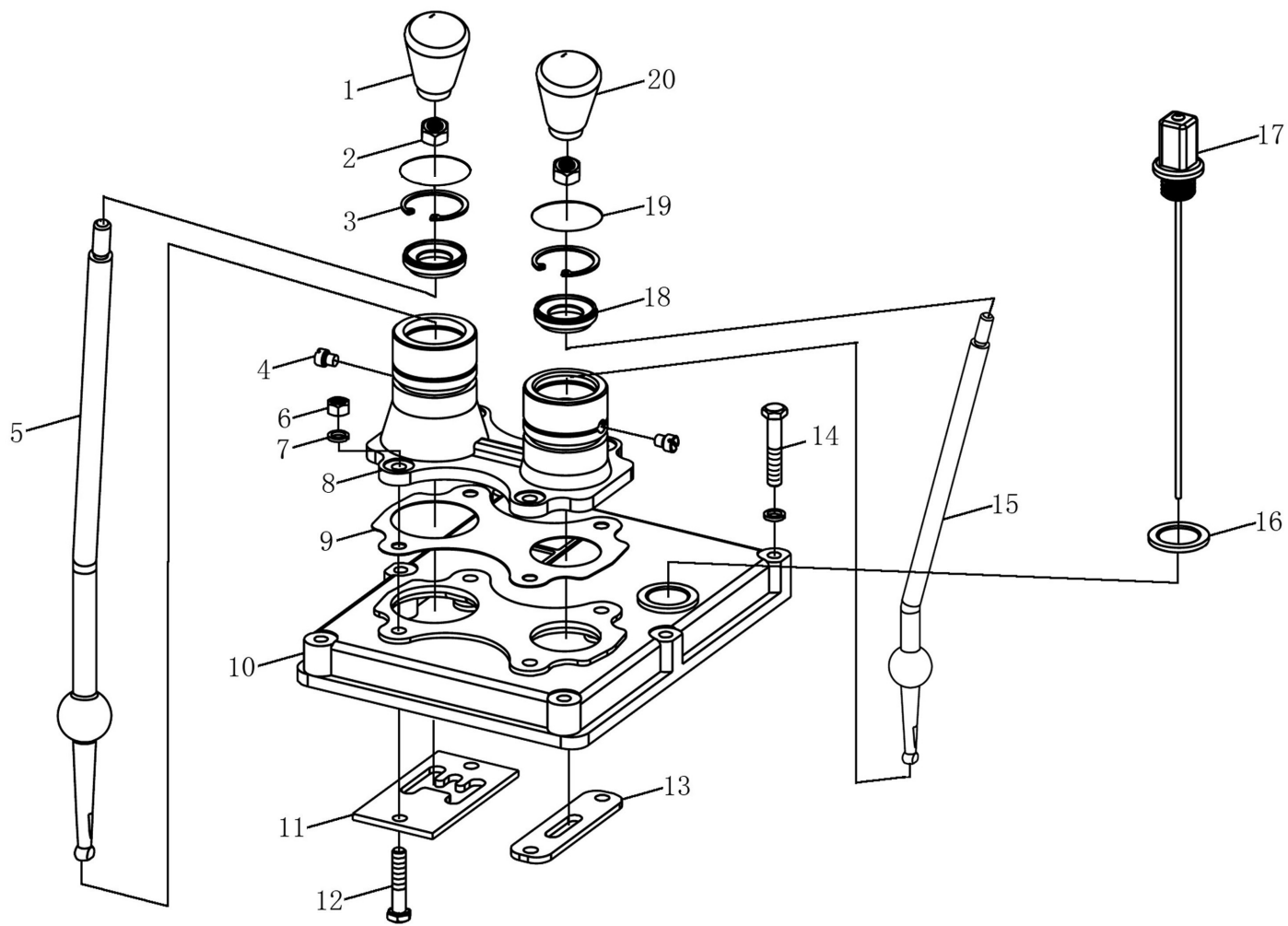


牵引板总成 II  
Drawbar II

牵引板总成 II

Drawbar II

序号 Ser. No.	代 号 Part No.	名 称	Name	数量 Qty.
1	160.35.012-1	牵引销焊合件 II	Drawbar connecting pin assembly II	1
2	160.35.102-1	牵引十字节	Drawbar crossing	1
3	160.56.014	锁销总成	Lock pin	2
4	300.35.015	可调式牵引板焊合件	Drawbar assembly	1
5	300.35.206	牵引销	Drawbar connecting pin	1
6	GB/T899	螺柱AM14-M14×1.5×70-8.8	Stud AM14-M14×1.5×70-8.8	6
7	GB/T6176	螺母M14×1.5	Nut M14×1.5	6
8	GB/T93	垫圈14	Washer 14	6
9	GB/T93	垫圈16	Washer 16	2
10	GB/T5783	螺栓M16×35	Bolt M16×35	2



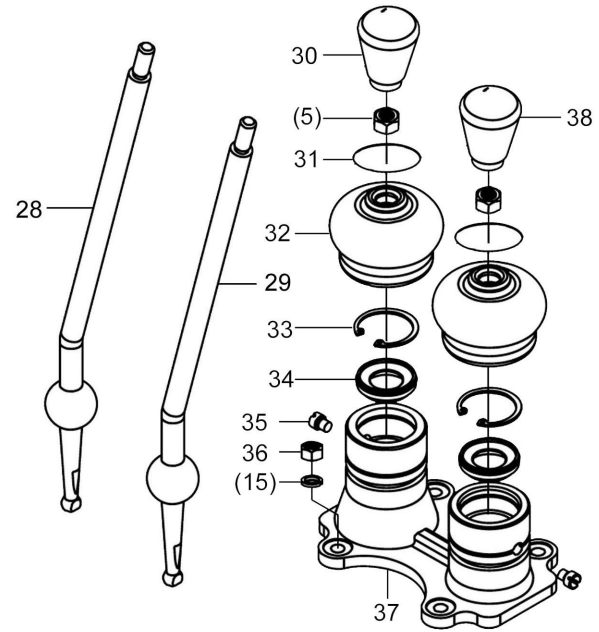
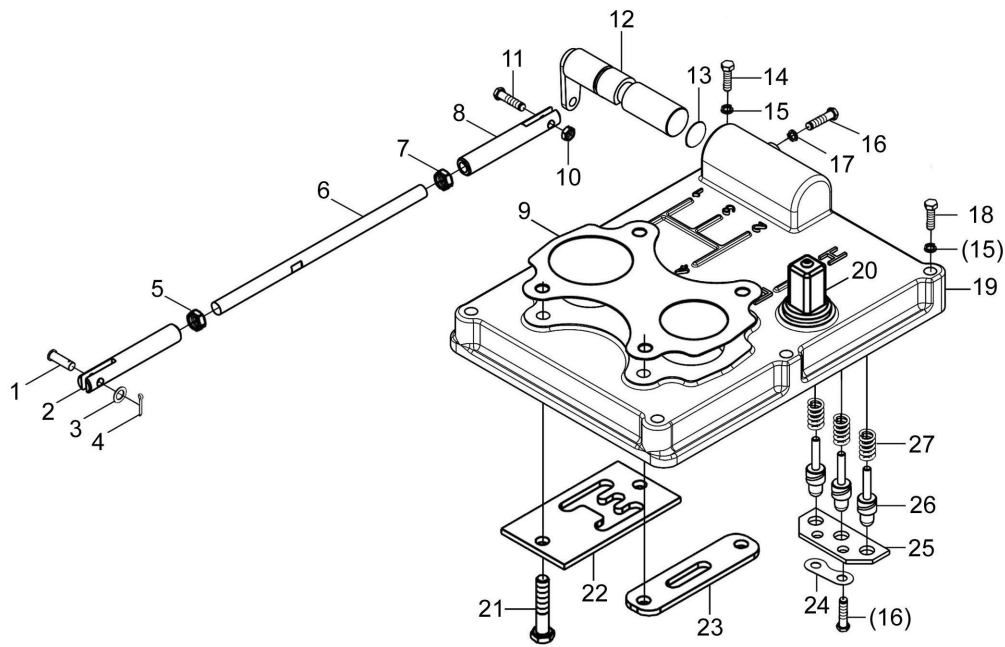
变速箱盖  
Transmission Cover

### 变速箱盖

### Transmission Cover

序号 Ser. No.	代号 Part No.	名称	Name	数量 Qty.
1	304.37S.211A	变速手柄组合件(双作用)	Handle control lever -----①	1
	300.37.211A	变速手柄组合件(单作用)	Handle control lever-----②	1
2	GB/T 889	螺母M10	Nut M10	2
3	GB/T 893.1	挡圈37	Retaining ring 37	2
4	GB/T 75	开槽长圆柱端紧定螺钉M10×13	Screw M10×13	2
5	300.37.192-1	主变速操纵杆	Control lever, main change speed	1
6	GB/T 889	螺母M8	Nut M8	4
7	GB/T 93	垫圈8	Spring lock washer 6	10
8	300E.37.101	变速杆座	Change speed lever seat	1
9	300.37.195	变速杆座垫片	Gasket,change speed lever seat	1
10	304.37S.189	变速箱上前盖	Transmission upper front cover-----①	1
	300.37.189	变速箱上前盖	Transmission upper front cover-----②	1
11	304.37S.190	主变速框板	Guide plate,main change speed-----①	1
	300.37.190	主变速框板	Guide plate,main change speed-----②	1
12	GB/T 5782	螺栓M8×40	Bolt M8×40	4
13	304.37S.191	副变速框板	Guide plate,secondary change speed-----①	1
	300.37.191	副变速框板	Guide plate,secondary change speed-----②	1
14	GB/T 5782	螺栓M8*45	Bolt M8×45	6
15	300.37.193-3	副变速操纵杆	Control lever,secondary change speed	1
16	160.55.104	垫片	Washer	1
17	300.37.018A	油尺总成	Dipstick assembly	1
18	800.37.015	操纵杆密封圈	Oil seal	2
19	GB/T 3082	镀锌钢丝Zd1.4*250		2
20	160.37.032-3	副变速手柄组合件	Handle control lever,secondary change speed	1

①---For double action clutch , ②---For single-action clutch



变速箱盖  
Transmission Cover

变速箱盖(防掉档)

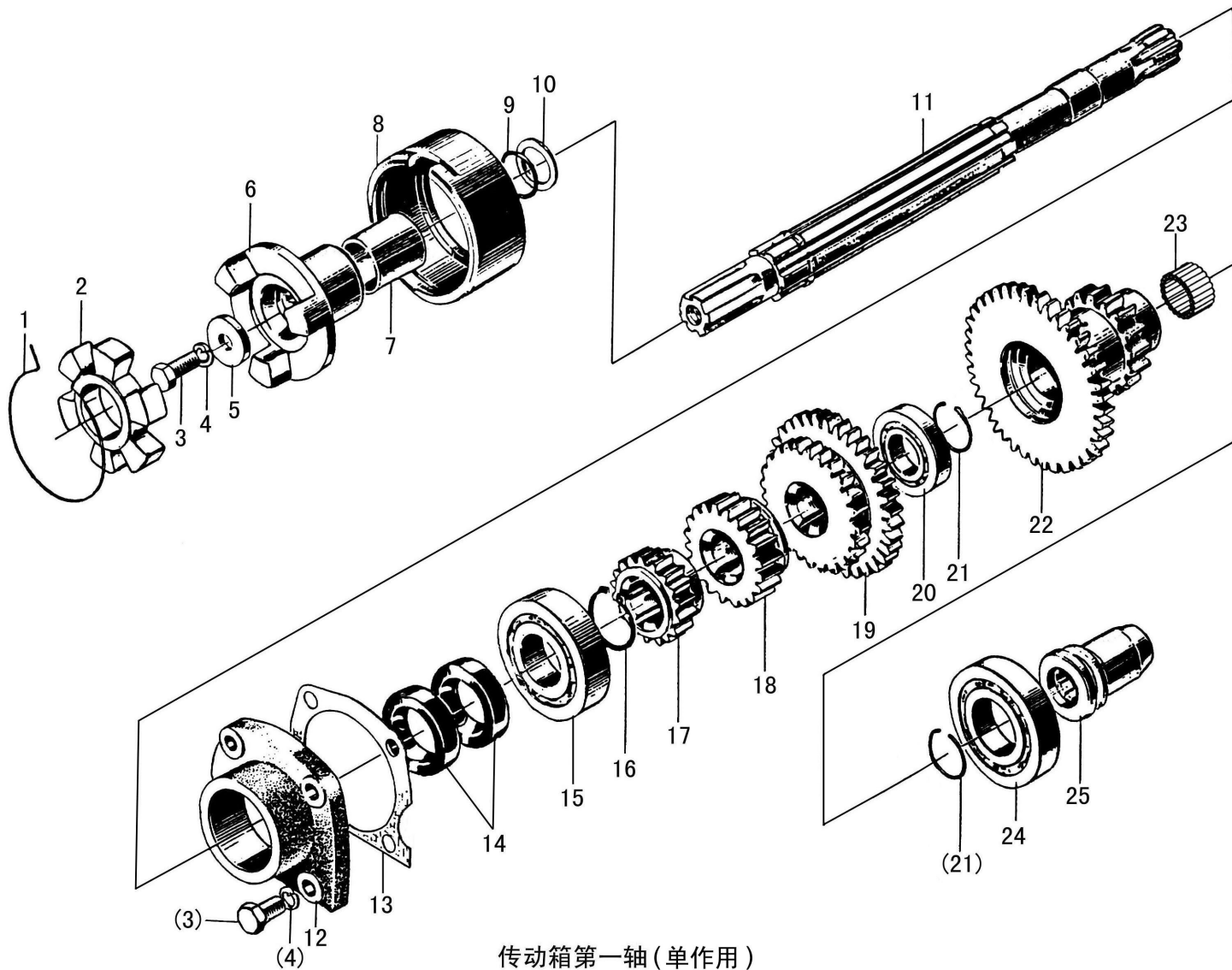
Transmission Cover

序号 Ser. No.	代 号 Part No.	名 称	Name	数量 Qty.
1	GB/T882	销轴B6*20	Pin roll B5×20	1
2	300.37.449-1	调节杆	adjusterbar	1
3	GB/T97.1	垫圈6	Washer 6	1
4	GB/T91	销2*16	Split pin 2×12	1
5	GB/T6170	螺母M10	Nut M10	3
6	300.37.448-1	调节杆	adjusterbar	1
7	GB/T6170	螺母M10-左	Nut M10	1
8	300.37.449A	调节杆	adjusterbar	1
9	300.37.195	变速杆座垫片	Gasket,change speed lever seat	1
10	GB/T889	螺母M6	Nut M6	1
11	GB/T5783	螺栓M6*20	Bolt M6×20	1
12	300.37.024	摇臂轴焊合件	Radial shaft weld	1
13	GB/T3452.1	O形密封圈17*1.8	O-ring 17*1.8	1
14	GB/T5783	螺栓M8*20	Bolt M8×20	1
15	GB/T93	垫圈8	Washer 8	8
16	GB/T5783	螺栓M6*16	Bolt M6×16	2
17	GB/T93	垫圈6	Washer 6	2
18	GB/T5782	螺栓M8*45	Bolt M8×45	5
19	300.37.018A	油尺总成	Dipstick assembly	1
20	GB/T5782	螺栓M8*40	Bolt M8×40	2
21	300.37.190	主变速框板	Guide plate,main change speed	1
22	300.37.191	副变速框板	Guide plate,secondary change speed	1
23	300.37.451	锁片	Lock piece	1

变速箱盖(防掉档)

Transmission Cover

序号 Ser. No.	代 号 Part No.	名 称	Name	数量 Qty.
24	300.37.450	压板	flat	1
25	300.37.447	锁定销	Locking pin	3
26	300.37.453	拨叉轴锁定弹簧	Fork shaft locking spring	3
27	300.37.192-1	主变速操纵杆	Control lever, main change speed	1
28	300.37.193-3	副变速操纵杆	Control lever,secondary change speed	1
29	300.37.211	变速手柄组合件	Handle control lever	1
	304.37S.211	变速手柄组合件	Handle control lever	1
30	GB/T3082	镀锌钢丝Zd1.4*250	Galvanized wireZd1.4*250	1
31	400.37.166	变速杆防尘罩	Gear shift lever rubber cap	2
32	GB/T893.1	挡圈37	Retaining ring 37	2
33	800.37.015	操纵杆密封圈	Oil seal	2
34	GB/T75	开槽长圆柱端紧定螺钉M10*13	Screw M10×13	2
35	GB/T6170	螺母M8	Nut M8	2
36	300E.37.101	变速杆座	Change speed lever seat	1
37	160.37.032	副变速手柄组合件	Handle control lever,secondary change speed	1



传动箱第一轴(单作用)  
Drive Gearbox Primary Shaft (Single Stage Clutch)

传动箱第一轴(单作用)

Drive Gearbox Primary Shaft (Single stage clutch)

序号 Ser. No.	代号 Part No.	名称	Name	数量 Qty.
1	300.21.147-1	钢丝挡圈	Snap ring, steel wire	1
2	300.21.145	弹性块	Elastic block	1
3	GB/T5783	螺栓M10×25	Bolt M10×25	5
4	GB/T93	垫圈10	Spring lock washer 10	5
5	300.37.315	厚垫圈	Thick washer	1
6	300.37.314	第一轴联轴节	Coupling, primary shaft	1
7	300.37.160	套	Sleeve	1
8	300.21.144	联轴节套	Coupling boot	1
9	GB3452.1	O形密封圈23.6×3.55	O-ring 23.6×3.55	1
10	300.37.320	联轴节垫片	Coupling washer	1
11	300.37.188-1	第一轴	Primary shaft	1
12	300.37.119	一轴前轴承盖	Primary shaft front bearing cap	1
13	300.37.171-1	一轴前轴承盖垫片	Gasket, primary shaft front bearing cap	1
14	GB/T9877.1	油封FB35×55×8	Oil seal FB35×55×8	2
15	GB/T276	滚动轴承6307	Rolling bearing 6307	1
16	GB/T894.1	挡圈35	Circlip for shaft 35	1
17	300.37.104	I 档滑动齿轮	Sliding gear, 1st speed	1
18	300.37.106	II -倒档滑动齿轮	Sliding gear,2nd reverse speed	1
19	300.37.108	III-IV档滑动齿轮	Sliding gear,3rd-4th speed	1
20	GB/T276	滚动轴承6006	Rolling bearing 6006	1
21	GB/T895.1	挡圈30	Roundwire snap ring for hole 30	2
22	300.37.133	高低档双联齿轮	Twin gear,high-low speed	1
23	非标准(Non-standard)	滚针轴承K25×30×25	Needle roller bearing 25×30×25	1