

托架及套管
Bracket & Sleeve

托架及套管

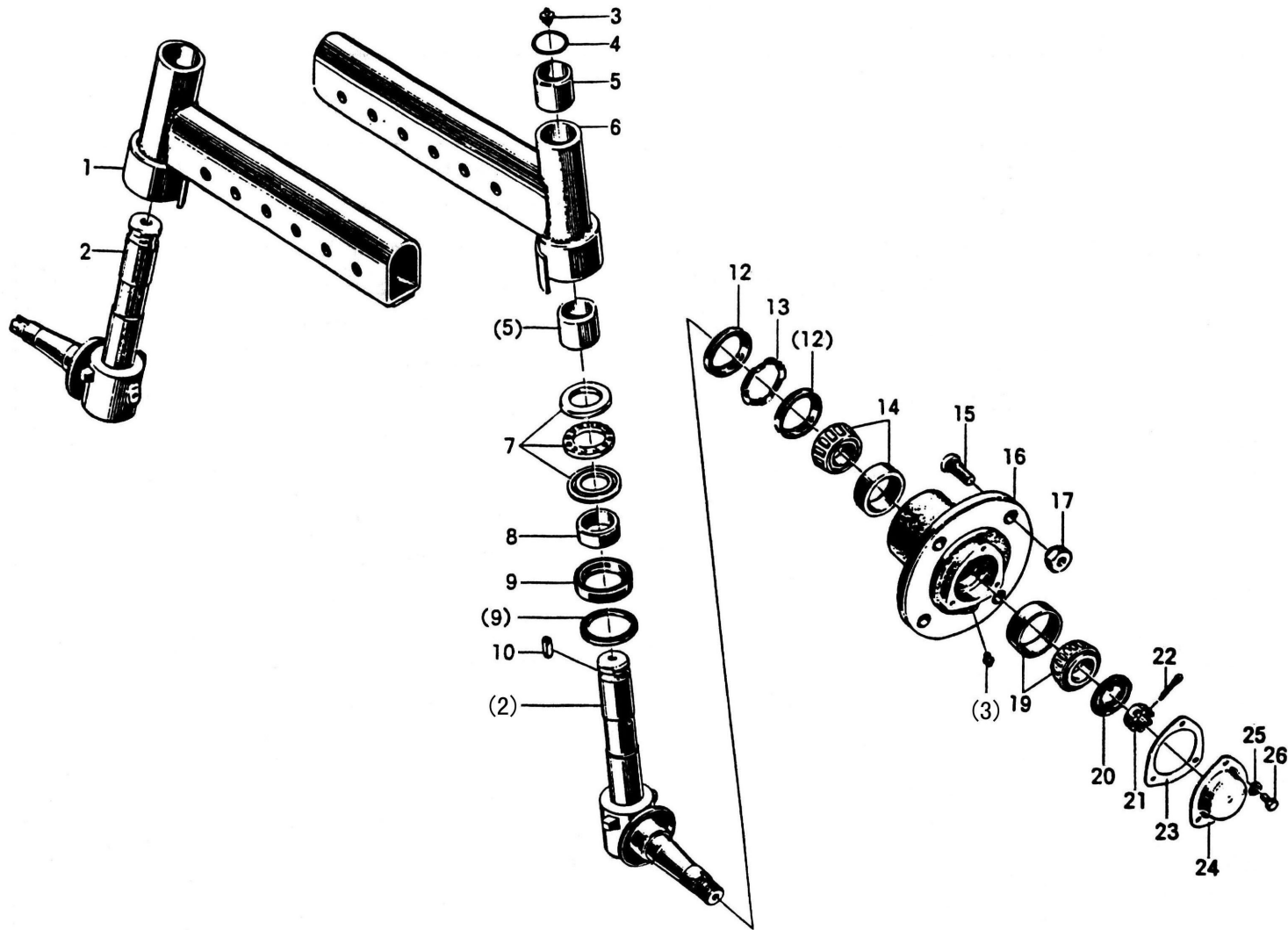
Bracket & Sleeve

序号 Ser. No.	代号 Part No.	名称	Name	数量 Qty.
1	GB/T 5786-1985	螺栓 M14×1.5×30	Bolt M14×1.5×30	2
2	GB/T 93-1987	垫圈 14	Spring lock washer 14	12
3	300.31.015	摆轴焊接总成	Pendulum shaft weldment assembly	1
4	300.21.215	线夹 (2)	Clip (2)	1
5	GB/T 5781-1986	螺栓 M10×18	Bolt M10×18	1
6	GB/T 93-1987	垫圈 10	Spring lock washer 10	1
7	300.31.113	垫圈	Washer	2
8	BL-178	橡胶垫	Rubber pad	2
9	GB/T 5782-1986	螺栓 M16×55	Bolt M16×55	4
		[螺栓M16×55反向装于托架与 柴油机连接处的上端4螺孔]	[Contrary fixing bolt M16×55 upside 4 holes to connect bracket and engine]	
	GB/T 898-1988	螺柱 AM16-M16×50	Stud AM16-M16×50	2
		[螺柱AM16-M16×50装于托架与 柴油机连接处的上端2螺孔]	[Fixing stud AM16-M16×50 into downside 2 holes to connect bracket and engine]	
10	300.31.101-2	托架	Bracket	1
11	GB/T 93-1987	垫圈 16	Spring lock washer 16	6
12	GB/T 6175-1986	螺母 M16	Nut M16	2
		[装于下端2螺柱用以连接托架与柴油机]	[fixing nut M16 to downside to connect bracket and engine]	
13	GB/T 889-1986	螺母 M12	Nut M12	2
14	160.31.103	摇摆轴垫片	Washer of pendulum shaft	1
15	GB/T 3452.1-1992	O形密封圈30×2.65	O-ring 30×2.65	2

续. 托架及套管

Cont. Bracket & Sleeve

序号 Ser. No.	代号 Part No.	名称	Name	数量 Qty.
16	300.31.118	摇摆轴衬套	Bush of pendulum shaft	2
17	300.31.020	套管焊接总成	Sleeve weldment assembly	1
	300.31.020A	套管焊接总成(配液压转向)	Sleeve weldment assembly (For Power Steering)	1
18	GB/T 7940.2-1995	直通式压注油杯M10×1	Oil cup M10×1	1
19	GB/T 6176-1986	螺母 M14×1.5	Nut M14×1.5	6
20	220.31.105	垫套	Liner	6
21	GB/T 5785-1986	螺栓 M14×1.5×85	Bolt M14×1.5×85	6
22	GB/T 5782-1986 或GB/T898-1988	螺栓 M14×55-8.8 或螺柱AM14-M14×1.5×50	Bolt M14×55-8.8 or Stud AM14-M14×1.5×50	4



付套管及前轮毂
Front Axle Arm & Front Wheel Hub

付套管及前轮毂

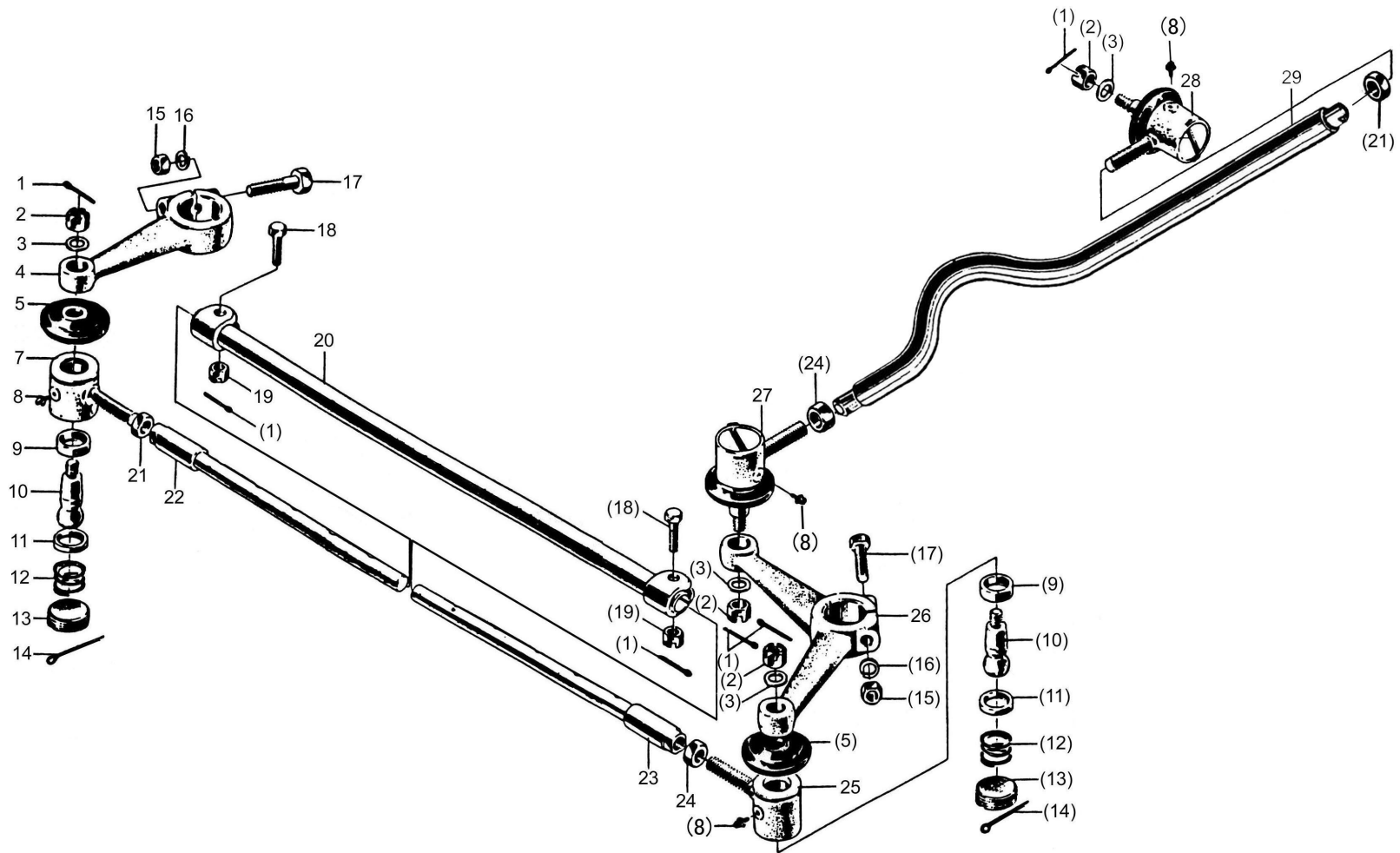
Front Axle Arm & Front Wheel Hub

序号 Ser. No.	代号 Part No.	名称	Name	数量 Qty.
1	300.31.022-1	付套管焊接总成(右)	Front axle arm weldment assembly(Right)	1
	300.31.022B	付套管焊接总成(右)(高地隙)	Front axle arm weldment assembly(Right) (For high ground clearance)	1
2	300.31.014	转向节总成	Steering knuckle assembly	2
	300.31.014A	左转向节总成(配液压转向)	Left-Steering knuckle assembly (For Power Steering)	1
	300.31.014B	转向节总成(高地隙)	Steering knuckle assembly (For high ground clearance)	2
3	JB/T 7940.1-1995	直通式压注油杯M10×1	Oil cup M10×1	4
4	GB/T 3452.1-1992	O型密封圈34.5×3.55	O-ring 34.5×3.55	2
	GB/T9877.1-1988	油封FB35×50×8(高地隙)	Oil seal FB35×50×8 (For high ground clearance)	2
5	300.31.123	转向节衬管	Bush	4
6	300.31.021-1	付套管焊接总成(左)	Front axle arm weldment assembly(Left)	1
	300.31.021B	付套管焊接总成(左)(高地隙)	Front axle arm weldment assembly(Left) (For high ground clearance)	1
7	GB/T 301-1995	滚动轴承51207	Rolling bearing 51207	2
8	300.31.110	肩套	Rubber pad	2
9	GB/T9877.1-1988	油封FB45×65×8	Oil seal FB45×65×8	4
10	GB/T 1096-1976	键 10×25	Key 10×25	2
11				
12	300.31.111	油封 40×64×8	Oil seal 40×64×8	4
13	300.31.112	油封隔离圈	Spacing ring, oil seal	2

续. 付套管及前轮毂

Cont. Front Axle Arm & Front Wheel Hub

序号 Ser. No.	代号 Part No.	名称	Name	数量 Qty.
14	GB/T 297-1994	滚动轴承32206	Rolling bearing 32206	2
15	300.39.113	螺栓	Wheel fixing screw	8
16	300.31.105	前轮毂	Front wheel hub	2
17	300.39.114	螺母	Wheel fixing nut	8
19	GB/T 297-1994	滚动轴承30305	Rolling bearing 30305	2
20	300.31.107	挡圈	Washer	2
21	300.31.108	调整螺母M22×1.5	Nut M22×1.5	2
22	GB/T 91-1986	开口销 5×40	Split pin 5×40	2
23	300.31.109	纸垫	Paper gasket	2
24	300.31.106	轴承盖	Bearing cap	2
25	GB/T 93-1987	垫圈 6	Spring lock washer 6	6
26	GB/T 5781-1986	螺栓 M6×12	Bolt M6×12	6



纵横拉杆
Drag Link & Tie Rod

纵横拉杆

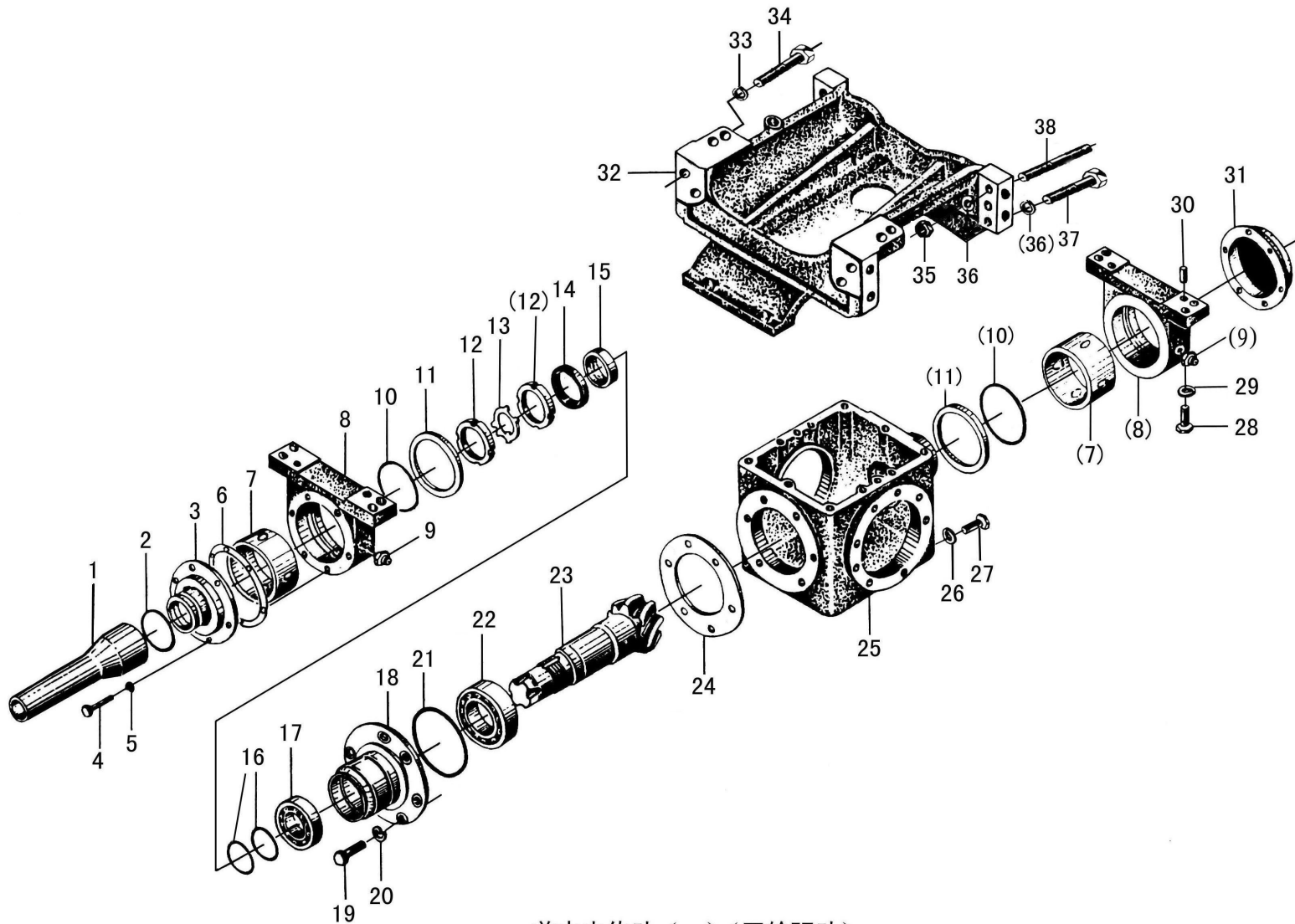
Drag Link & Tie Rod

序号 Ser. No.	代号 Part No.	名称	Name	数量 Qty.
1	GB/T 91	开口销 3.2×26	Split pin 3.2×26	6
2	GB/T 9459	螺母 M12×1.5	Nut M12×1.5	4
3	GB/T 97.1	垫圈 12	Plain washer 12	4
4	300.31.104	右转向臂	Right steering knuckle arm	1
5	300.31.145-1	接头油封套	Oil seal boot, joint	2
6				
7	300.31.147-2	拉杆接头(右)	Pull rod joint (Right)	1
8	JB/T7940.1	直通式压注油杯 M10×1	Oil cup M10×1	4
9	300.31.140-1	球头销座	Ball pin seat	2
10	300.31.139-1	球头销	Ball pin	2
11	300.31.141-1	球头销盖	Ball pin cap	2
12	300.31.142-1	压紧弹簧	Compression spring	2
13	300.31.143-1	螺旋盖	Screw cap	2
14	GB/T 91	开口销 2.5×55	Split pin 2.5×55	2
15	GB/T 6170	螺母 M12	Nut M12	2
16	GB/T 93	垫圈 12	Spring lock washer 12	2
17	GB/T 5782	螺栓 M12×70	Bolt M12×70	2
18	GB/T 31.1	螺栓 M12×45	Bolt M12×45	2
19	GB/T 6178	螺母 M12	Nut M12	2
20	300.31.023	主横拉杆总成	Main tie rod assembly	1
	300.31.023B	主横拉杆总成(高地隙)	Main tie rod assembly (For high ground clearance)	1
21	GB/T 6176	螺母 M16×1.5	Nut M16×1.5	2

续. 纵横拉杆

Cont. Drag Link & Tie Rod

序号 Ser. No.	代号 Part No.	名称	Name	数量 Qty.
22	300.31.024	副横拉杆总成(右)	Secondary tie rod assembly (Right)	1
23	300.31.025	副横拉杆总成(左)	Secondary tie rod assembly (Left)	1
24	GB/T 6176	螺母M16×1.5(左)	Nut M16×1.5 (Left)	1
25	300.31.146-2	拉杆接头(左)	Pull rod joint (Left)	1
26	300.31.103	左转向臂	Left steering knuckle arm	1
	300.31.310	左转向臂 I (配液压转向)	Left steering knuckle arm I (For Power Steering)	1
27	300.31.026-1	转向接头总成(左)	Steering joint assembly (Left)	1
28	300.31.027-1	转向接头总成(右)	Steering joint assembly (Right)	1
29	300.31.148B	纵拉杆	Drag link	1
		664mm—配SL2105柴油机	664mm—For SL2105 engine	
		820mm—配TY395/TY3100柴油机	820mm—For TY395 or TY3100 engine	
		配4L22T柴油机	For 4L22T engine	
		配ZN390柴油机	For ZN390 engine	
	304.31.024A	903mm—配ZN490/4L22BT柴油机	903mm—For ZN490 or 4L22BT engine	



前中央传动（一）（四轮驱动）
Front Central Drive (A) (Four wheel drive)

前中央传动（一）（四轮驱动）

Front Central Drive (A) (Four wheel drive)

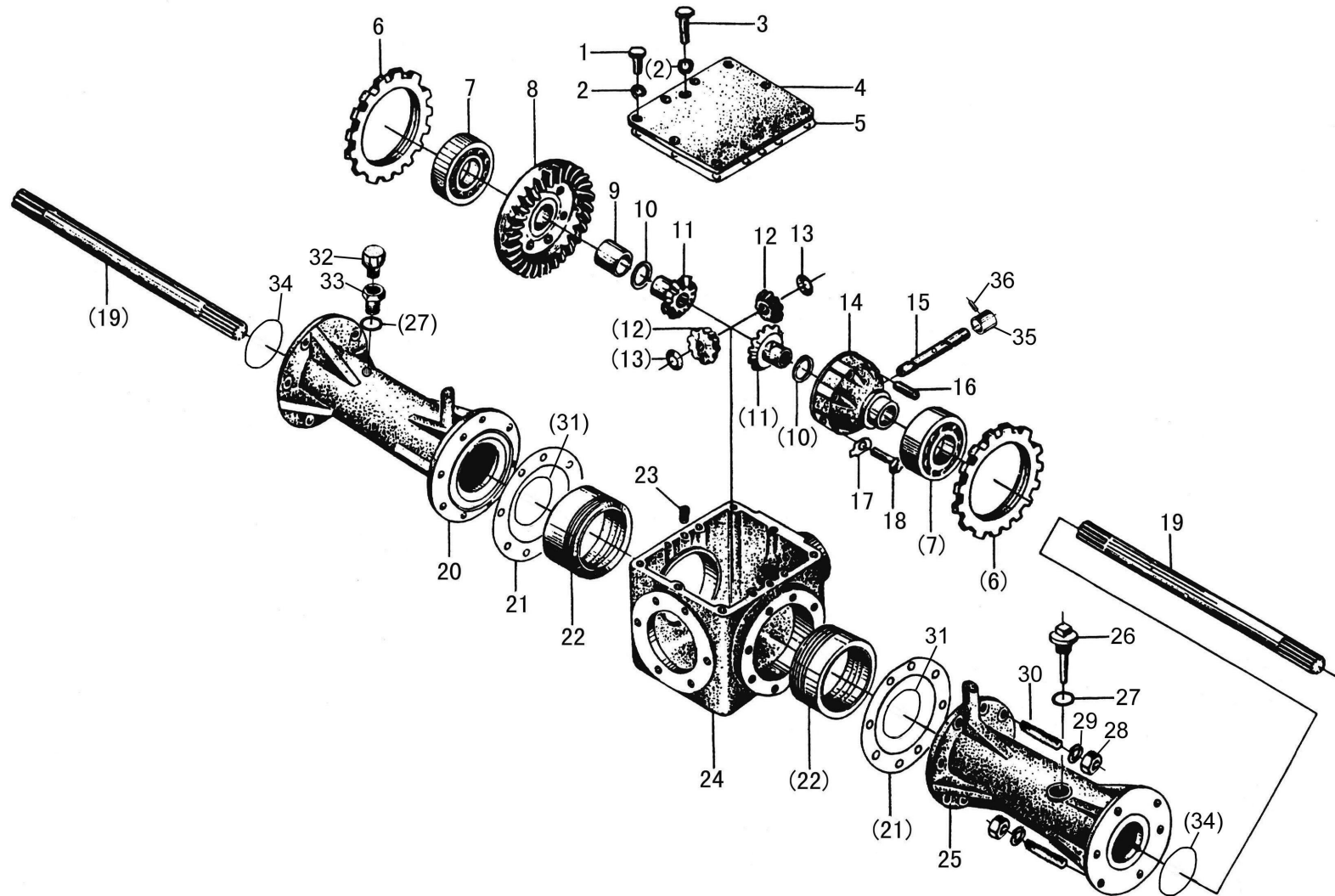
序号 Ser. No.	代号 Part No.	名称	Name	数量 Qty.
1	304.31.014-1	防尘罩焊合件	Dust pipe weldment	1
2	GB/T 3452.1	O形密封圈48.7×3.55	O-ring 48.7×3.55	1
3	304.31.211	防尘管座	Dust pipe seat	1
4	GB/T 5780	螺栓M6×12	Bolt M6×12	12
5	GB/T 93	垫圈6	Spring lock washer 6	12
6	304.31.114	纸垫	Paper gasket	2
7	304.31.123-1	摆衬	Pendulum lining	2
8	304.31.124	摆座	Pendulum seat	2
9	JB/T 7940.1	直通式压注油杯M10×1	Oil cup M10×1	2
10	GB/T 3452.1	O形密封圈85×2.65	O-ring 85×2.65	2
11	304.31.113	止推垫片	Thrust washer	2
12	GB/T 810	小圆螺母 (M33×1.5)	Nut (M33×1.5)	2
13	GB/T 858	圆螺母用止动垫圈33	Washer 33	1
14	GB/T 9877.1	油封FB45×70×8	Oil seal FB45×70×8	1
15	304.31.122-1	支承套	Supporting sleeve	1
16	GB/T 3452.1	O形密封圈32.5×3.55	O-ring 32.5×3.55	2
17	GB/T 297	滚动轴承32007	Rolling bearing 32007	1
18	304.31.106	轴座	Shaft seat	1
19	GB/T 5783	螺栓M10×30	Bolt M10×30	6
20	GB/T 93	垫圈10	Spring lock washer 10	6
21	GB/T 3452.1	O形密封圈95×2.65	O-ring 95×2.65	1
22	GB/T 297	滚动轴承30208	Rolling bearing 30208	1
23	304.31.117	主动齿轮	Driving gear	1

续. 前中央传动（一）（四轮驱动）

Cont. Front Central Drive (A) (Four wheel drive)

序号 Ser. No.	代号 Part No.	名称	Name	数量 Qty.
24	304.31.502	调整纸垫	Adjusting shim	△
25	304.31.104-1	主传动壳体	Main drive case	1
26		复合垫圈16	Washer 16	1
27	GB/T5786	螺栓M16×1.5×18	Bolt M16×1.5×18	1
28	304.31.220	衬套	Bush	1
29	GB/T 5783	螺栓M12×35	Bolt M12×30	8
30	GB/T 93	垫圈12	Spring lock washer 12	8
31	GB/T 119	销D8×16	Parallel pin D8×16	4
32	304.31.111	防尘盖	Dust cap	1
33	304.31.101	托架	Bracket	1
34	GB/T 93	垫圈14	Spring lock washer 14	4
35	GB/T 5786	螺栓M14×55-8.8	Bolt M14×55-8.8	4
36	GB/T 6175	螺母M16	Nut M16	6
37	GB/T 93	垫圈16	Spring lock washer 16	6
38	GB/T 5782	螺栓M16×55	Bolt M16×55	4
39	GB/T 898	螺柱AM16-M16×50	Stud AM16-M16×50	2

△适量 Just right amount



前中央传动 (二) (四轮驱动)
 Front Central Drive(B)(Four wheel drive)

前中央传动（二）（四轮驱动）

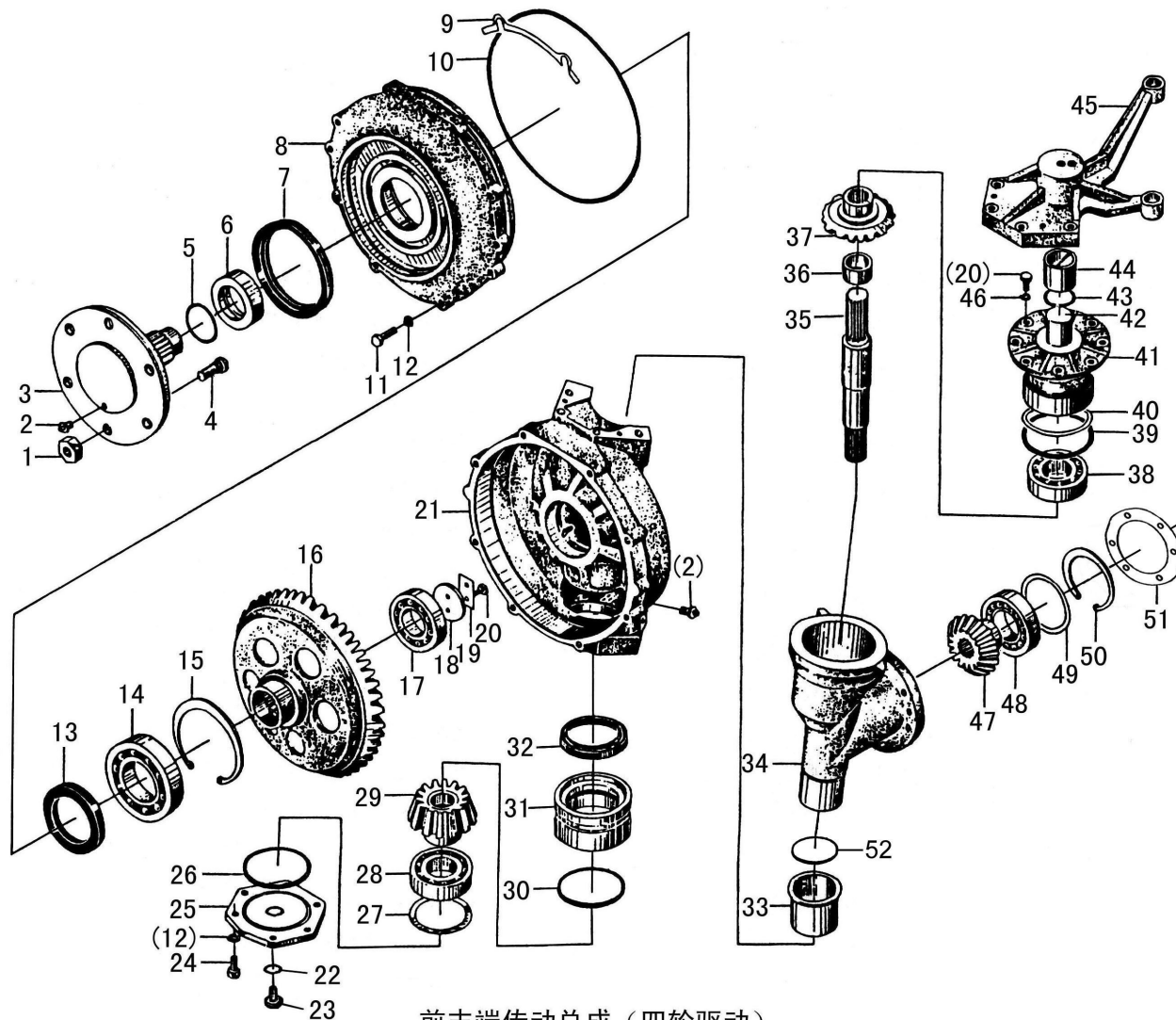
Front Central Drive (B) (Four wheel drive)

序号 Ser. No.	代号 Part No.	名称	Name	数量 Qty.
1	GB/T 5781	螺栓M8×25	Bolt M8×25	10
2	GB/T 93	垫圈8	Spring lock washer 8	1
3	304.31.138	限位螺钉	Limit screw	2
4	304.31.130	箱盖	Case cover	1
5	304.31.131	纸垫	Paper gasket	1
6	304.31.109	调整螺母	Adjusting nut	2
7	GB/T 297	滚动轴承30211	Rolling bearing 30211	2
8	304.31.118	从动齿轮	Driven gear	1
9	304.31.119-1	衬套	Bush	2
10	304.31.120	平垫片	Plain washer	2
11	304.31.103	半轴齿轮	Differential side gear	2
12	304.31.102	行星齿轮	Planet gear	2
13	304.31.121	球垫片	Spherical washer	2
14	304.31.107	差速器壳体	Differential cover	1
15	304.31.116-2	行星齿轮轴	Planet gear shaft	1
16	GB/T 879	销 6×30	Pin 6×30	1
	GB/T 879	销 4×30	Pin 4×30	1
17	GB/T 861.1	内齿锁紧垫圈10	Internal tooth lock washer 10	6
18	GB/T 5785	螺栓M10×1×85	Bolt M10×1×85	6
19	304.31.108-1	半轴	Differential axle	2
20	304.31.105-2	半轴壳体	Differential axle housing	1
21	304.31.115-1	纸垫	Paper gasket	2
22	304.31.110	轴承座	Bearing seat	2

续. 前中央传动 (二) (四轮驱动)

Cont. Front Central Drive (B) (Four wheel drive)

序号 Ser. No.	代 号 Part No.	名 称	Name	数量 Qty.
23	GB/T 72	螺钉M8×22	Screw M8×22	2
24	304.31.104-1	主传动壳体	Front case	1
25	304YZ.31.105-2	右半轴壳	Differential axle housing	1
26	184.31.030	前桥量油尺总成	Dipstick assembly	1
27		复合垫圈16	Washer 16	2
28	GB/T6171	螺母M12×1.25	Bolt M12×1.25	28
29	GB/T 93	垫圈12	Spring lock washer 12	28
30	GB/T899	螺柱AM12-M12×1.25×30	Stud AM12-M12×1.25×30	28
31	GB3452.1	O形密封圈112×2.65	O-ring 112×2.65	2
32	184.31.060	呼吸器总成	Vent pipe	1
33	184.31.125-1	通气螺塞	Vent screw plug	1
34	GB3452.1	O形密封圈80×2.65	O-ring 80×2.65	2
35	304.31.201	行星齿轮隔套	Sleeve	1
36	GB/T879	销3×20	Pin 3×20	1



前末端传动总成（四轮驱动）
Front Final Drive Assembly (Four wheel drive)

前末端传动总成 (四轮传动)

Front Final Drive Assembly (Four wheel drive)

序号 Ser. No.	代号 Part No.	名称	Name	数量 Qty.
1	300.39.114	螺母	Wheel fixing nut	12
2	JB/T 7940.1	直通式压注油杯M10×1	Oil cup M10×1	4
3	304.31.179-3	前驱动轴	Front driving shaft	2
4	300.39.113	螺栓	Wheel fixing screw	12
5	GB3452.1	O形密封圈46.2×3.55	O-ring 46.2×3.55	2
6	304.31.178-2	垫套	Liner	2
7	304.31.180	端面油封	End face oil seal	2
8	304.31.151	前驱动端盖	Front drive end cover	2
9	304.31.173	调整垫片0.2	Adjusting shim 0.2	△
	304.31.174	调整垫片0.5	Adjusting shim 0.5	△
	304.31.175	调整垫片1.0	Adjusting shim 1.0	△
10	GB/T 3452.1	O形密封圈 258×5.3	O-ring 258×5.3	2
11	GB/T 5783	螺栓M10×35	Bolt M10×35	16
12	GB/T 93	垫圈10	Spring lock washer 10	28
13	GB/T 9877.1	油封FB65×90×10	Oil seal FB65×90×10	2
14	GB/T 276	滚动轴承6310	Rolling bearing 310	2
15	GB/T 893.1	挡圈110	Circlip for hole 110	2
16	304.31.153	前末端传动大齿轮	Large gear,front final drive	2
17	GB/T 283	滚动轴承NF208E	Rolling bearing NF208E	2
18	304.31.182	压板	Clamping plate	2
19	304.31.181	保险垫片	Safety washer	2
20	GB/T 5783	螺栓M8×20 (40Cr调质)	Bolt M8×20 (40Cr,hardened and tempered)	20

△适量 Just right amount

续. 前末端传动总成 (四轮传动)

Cont. Front Final Drive Assembly (Four wheel drive)

序号 Ser. No.	代号 Part No.	名称	Name	数量 Qty.
21	304.31.150	右边减速壳体	Right side reduction housing	1
	304.31.154	左边减速壳体	Left side reduction housing	1
22	GB 3452.1	O形密封圈 10×2.65	O-ring 10×2.65	2
23	304.31.152	螺塞	Plug	2
24	GB/T 5783	螺栓M10×25 (40Cr调质)	Bolt M10×25(40Cr,hardened and tempered)	12
25	304.31.172-1	下端盖	Lower end cover	2
26	GB 3452.1	O形密封圈 90×2.65	O-ring 90×2.65	2
27	304.31.169	调整垫圈0.2	Adjusting shim 0.2	△
	304.31.170	调整垫圈0.5	Adjusting shim 0.5	△
	304.31.171	调整垫圈1.0	Adjusting shim 1.0	△
28	GB/T 297	滚动轴承30210	Rolling bearing 30210	2
29	304.31.167	前末端小齿轮	Pinion gear,front final drive	2
30	GB 3452.1	O形密封圈 63×5.3	O-ring 63×5.3	2
31	304.31.215-1	支承套	Supporting sleeve	2
32	304.31.217	防尘圈	Dust ring	2
33	304.31.177	衬套	Boot	2
34	304.31.161	左立轴套管	Left kingpin housing	1
	304.31.187	右立轴套管	Right kingpin housing	1
35	304.31.183	立轴	Kingpin	2
36	304.31.165	隔套	Supporting sleeve	2
37	304.31.184	锥齿轮 (二)	Bevel gear(2)	2
38	GB/T 297	滚动轴承30208	Rolling bearing 30208	2

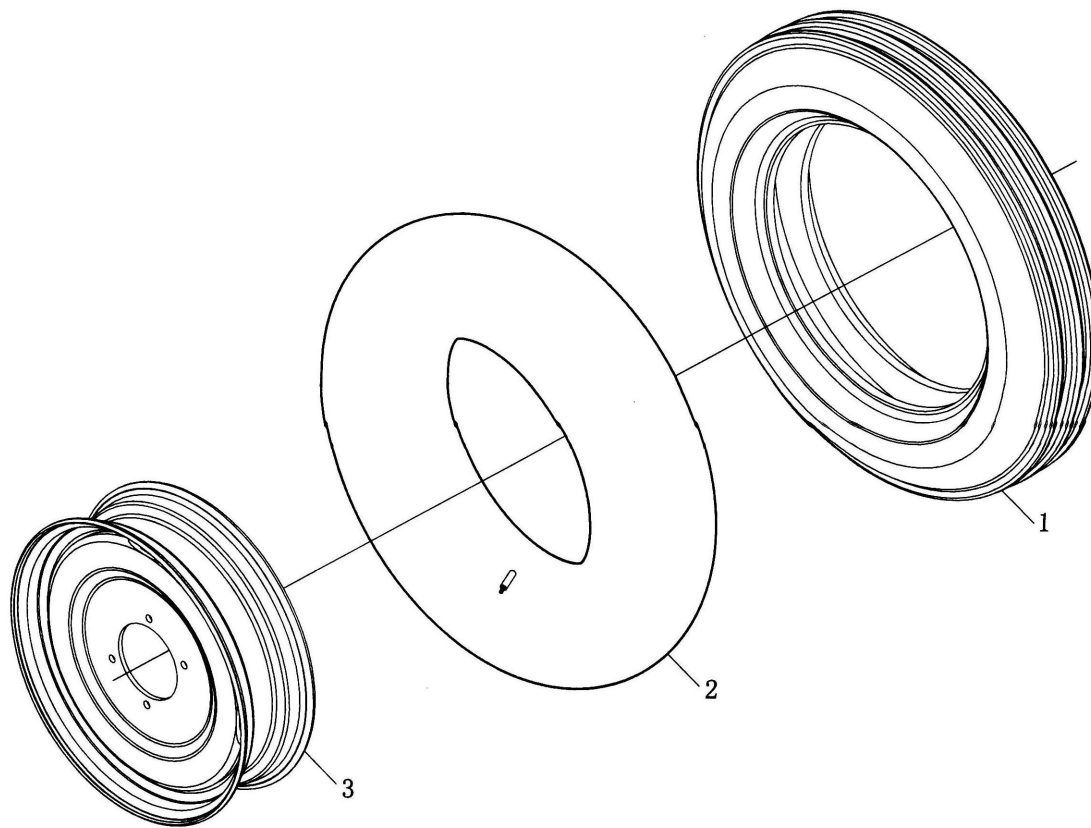
△适量 Just right amount

续. 前末端传动总成 (四轮传动)

Cont. Front Final Drive Assembly (Four wheel drive)

序号 Ser. No.	代号 Part No.	名称	Name	数量 Qty.
39	GB 3452.1	O形密封圈 85×5.3	O-ring 85×5.3	2
40	304.31.157	调整垫圈0.2	Adjusting shim 0.2	△
	304.31.158	调整垫圈0.5	Adjusting shim 0.5	△
	304.31.159	调整垫圈1.0	Adjusting shim 1.0	△
41	304.31.160	主销轴座	Kingpin shaft seat	2
42	304.31.216	主销轴头	Kingpin shaft head	2
43	GB 3452.1	O形密封圈37.5×3.55	O-ring 37.5×3.55	2
44	304.31.156-1	衬套	Bush	2
45	304YZ.31.155-1	左转向臂	Left steering knuckle arm	1
	304.31.186-1	右转向臂	Right steering knuckle arm	1
46	GB/T 93-1987	垫圈8	Spring lock washer 8	16
47	304.31.166	锥齿轮 (一)	Bevel gear (1)	2
48	GB/T 276	滚动轴承6209	Rolling bearing 6209	2
49	304.31.162	调整垫圈0.2	Adjusting shim 0.2	△
	304.31.163	调整垫圈0.5	Adjusting shim 0.5	△
	304.31.164	调整垫圈1.0	Adjusting shim 1.0	△
50	GB/T 893.1	挡圈85	Circlip for hole 85	2
51	304.31.231	纸垫	Paper gasket	2
52	GB3452.1-1992	O形密封圈 51.5×2.65	O-ring 51.5×2.65	2

△适量 Just right amount



导向轮
Directive Wheel