



黄海金马30-40系列轮式拖拉机零件图册

HHJM 30-40 SERIES WHEELED TRACTOR PARTS CATALOGUE

马恒达悦达（盐城）拖拉机有限公司
Mahindra Yueda (Yancheng) Tractor Co., Ltd.

编 制 说 明

Explanation

《黄海金马-30~40 系列轮式拖拉机零件图册》是根据我厂研制开发的新系列轮式拖拉机产品图样编写的，供国内外用户选购零件时参考，也可帮助用户了解该系列拖拉机的结构和装配关系。

图册中每张图样后都附有零件明细表，标有各种零件的代号，中、英文名称及数量。

由于不同国家和地区的使用要求不同，同时，产品处于不断地改进和发展中，本图册中的少数零部件图可能与出厂产品实物有所出入，敬请用户注意。本图册如有错误，待再版补正，敬希用户鉴谅。

《Huanghai JinMa- 30~40 Series Wheeled Tractor Parts Catalogue》is complied according to the drawing of new serial products we are developing and manufacturing at present . It serves as a guide to help our users understand the construction and the relation of assembly.

Every drawing in catalogue is appended with specific parts form including different Part No. , Part Name in Chinese and English and Quantity.

As nations and regions have different requests of use and improvement of product is bound to be made from time to time , drawings may not fully conform to the actual parts supplied , please care for it . If here are some errors in this catalogue , we will modify , please refer to the new edition.

马恒达悦达（盐城）拖拉机有限公司

MAHINDRA YUEDA [YANCHENG] TRACTOR CO.,LTD.

2010.6

黄海金马 -30-40A型轮式拖拉机部件组成表
Parts List of Huanghai JM-30-40A Wheel Tractor

序号 Ser. No.	名称 Part Name	机型 Model						页号 Page
		300	304	350	354	400A	404A	
1	散热器总成 Radiator Assembly	✓	✓	✓	✓	✓	✓	1
2	进气系统总成I Air Intake SystemI	△	△	△	△	△	△	3
3	进气系统总成II Air Intake SystemII	✓	✓	✓	✓	✓	✓	5
4	排气系统总成I Exhaust SystemI	△	△	△	△	△	△	7
5	排气系统总成II Exhaust SystemII	✓	✓	✓	✓	✓	✓	9
6	排气系统总成III Exhaust SystemIII			△	△			11
7	发动机操纵机构总成 Engine Control Mechanism	✓	✓	✓	✓	✓	✓	13
8	单作用离合器总成 Single Stage Clutch	✓	✓	✓	✓	✓	✓	16
9	双作用离合器总成 Dual Stage Clutch	△	△	△	△	△	△	18
10	过桥 Intermediate Axle	✓	✓	✓	✓	✓	✓	22
11	过桥（四轮驱动+单作用） Intermediate Axle (4WD and Single stage clutch)		✓		✓		✓	26
12	过桥(双作用离合器) Intermediate Axle (For dual Stage Clutch)	△	△	△	△	△	△	30
13	前驱动拨叉（四轮驱动） Front Drive Release Fork (Four wheel drive)		△		△		△	33
14	托架及套管 Bracket & Sleeve	✓		✓		✓		35
15	付套管及前轮毂 Front Axle Arm & Front Wheel Hub	✓		✓		✓		38
16	纵横拉杆 Drag Link & Tile Rod	✓		✓		✓		41
17	前中央传动（一）（四轮驱动） Front Central Drive (A) (Four wheel drive)		✓		✓		✓	44
18	前中央传动（二）（四轮驱动） Front Central Drive (B) (Four wheel drive)		✓		✓		✓	47

黄海金马-30-40A型轮式拖拉机部件组成表
Parts List of Huanghai JM-30-40A Wheel Tractor

序号 Ser. No.	名称 Part Name	机型 Model						页号 Page	
		300	304	350	354	400A	404A		
19	前末端传动总成 (四轮驱动)	Front Final Drive Assembly (Four wheel drive)		✓		✓		✓	50
20	导向轮	Directive Wheel	✓		✓		✓		54
21	前驱动轮 (四轮驱动)	Front Driving Wheel (Four wheel drive)		✓		✓		✓	56
22	驱动轮	Driving Wheel	✓	✓	✓	✓			58
23	驱动轮I	Driving Wheel I					✓	✓	60
24	摆式牵引板总成	Pendulum Drawbar	△	△	△	△	△	△	62
25	牵引板总成 I	Drawbar I	△	△	△	△	△	△	64
26	牵引板总成 II	Drawbar II	△	△	△	△	△	△	66
27	变速箱盖	Transmission Cover	✓	✓	✓	✓	✓	✓	68
28	变速箱盖	Transmission Cover	✓	✓	✓	✓	✓	✓	70
29	传动箱第一轴(单作用)	Drive Gearbox Main Shaft (Single stage clutch)	✓	✓	✓	✓	✓	✓	73
30	传动箱第一轴 (双作用离合器)	Drive Gearbox Primary Shaft	△	△	△	△	△	△	76
31	传动箱第二轴(单作用)	Drive Gearbox(Single stage clutch)	✓	✓	✓	✓	✓	✓	79
32	传动箱第二轴 (双作用离合器)	Drive Gearbox Main Shaft (For dual stage clutch)	△	△	△	△	△	△	82
33	传动箱第二轴 (防掉档)	Drive Gearbox Main Shaft	✓	✓	✓	✓	✓	✓	84
34	差速器	Differential	✓	✓	✓	✓	✓	✓	86
35	差速锁	Differential Lock	✓	✓	✓	✓	✓	✓	88
36	动力输出 (啮合套换挡)	Power Take-Off (Meshing sleeve shift)	✓	✓	✓	✓	✓	✓	90

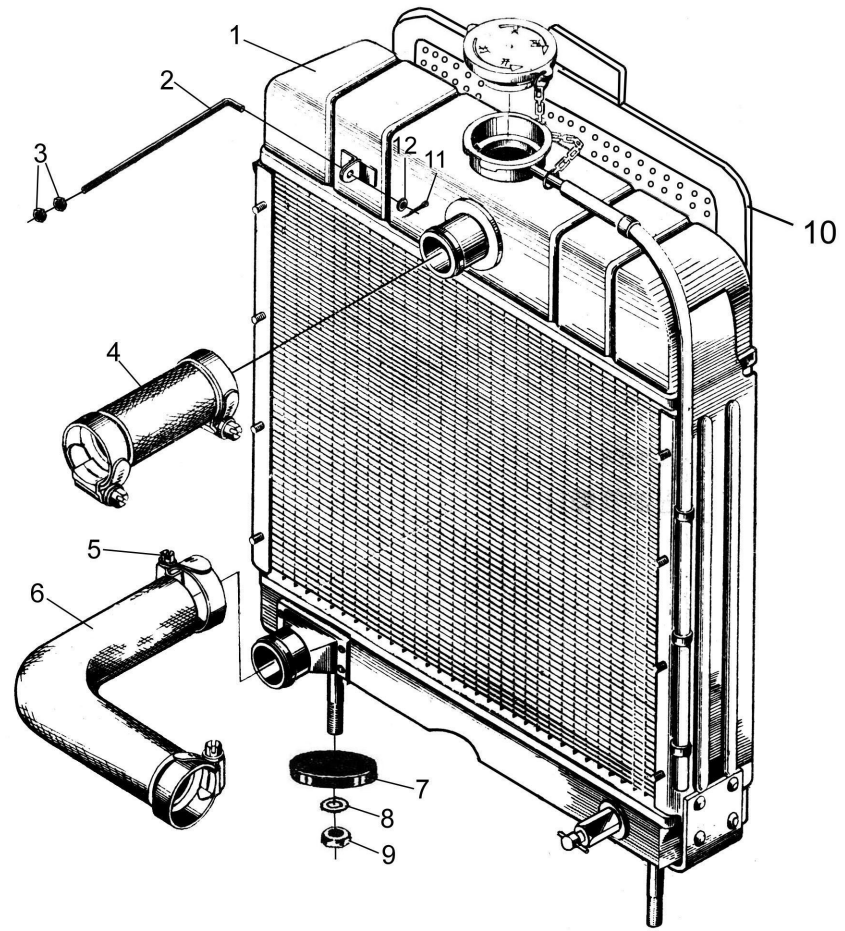
黄海金马 -30-40A型轮式拖拉机部件组成表
Parts List of Huanghai JM-30-40A Wheel Tractor

序号 Ser. No.	名称 Part Name	机型 Model						页号 Page
		300	304	350	354	400A	404A	
37	传动箱 Drive Gearbox	✓	✓	✓	✓	✓	✓	93
38	末端传动总成 Final Drive Assembly	✓	✓	✓	✓	✓	✓	98
39	末端传动总成(加长轴) Final Drive Assembly	△	△	△	△	△	△	101
40	转向器 Side Hydraulic Steering Assembly	✓		✓		✓		103
41	分动箱传动轴总成 Transfer Case Drive Shaft Assembly		✓		✓		✓	106
42	制动器及操纵机构总成 Brake and Operation Mechanism	✓	✓	✓	✓	✓	✓	110
43	驾驶座总成 Seat	✓	✓	✓	✓	✓	✓	114
44	驾驶座总成I Seat I	△	△	△	△	△	△	116
45	折叠式安全架总成 Roll-over Protective Structure	△	△	△	△	△	△	118
46	发动机罩壳、仪表盘及支架总成 I Hood , Panel and Bracket I	✓	✓	✓	✓	✓	✓	120
47	发动机罩壳、仪表盘及支架总成 II Hood , Panel and Bracket II	△	△	△	△	△	△	124
48	发动机罩壳、仪表盘及支架总成III Hood , Panel and Bracket III	△	△	△	△	△	△	127
49	左右护板及左右地板总成 Mud Shield and Step	✓	✓	✓	✓	✓	✓	130
50	电瓶座总成I Battery Support Seat Assy I	✓	✓	✓	✓	✓	✓	133
51	电瓶座总成II Battery Support Seat Assy II	✓	✓	✓	✓	✓	✓	135
52	工具箱总成 Tool Box	△	△	△	△	△	△	137
53	燃油箱总成 Fuel Tank	✓	✓	✓	✓	✓	✓	139
54	提升器总成 Lifter Assembly	✓	✓	✓	✓	✓	✓	142

黄海金马 -30-40A型轮式拖拉机部件组成表
Parts List of Huanghai JM-30-40A Wheel Tractor

序号 Ser. No.	名称 Part Name	机型 Model						页号 Page
		300	304	350	354	400A	404A	
55	分配器总成 Distributor Assembly	✓	✓	✓	✓	✓	✓	146
56	悬挂机构总成 Suspension Mechanism Assembly	✓	✓	✓	✓	✓	✓	150
57	气制动总成 Air Brake Assembly	△	△	△	△	△	△	153
58	液压转向器总成 Hydraulic Steering Gear Assembly	△	✓	△	✓	△	✓	156
59	侧置液压转向 Side Hydraulic Steering Assembly		✓					161
60	液压油泵及管路总成 I Pump and Pipe I	✓	✓	✓	✓	✓	✓	163
61	液压油泵及管路总成 II Pump and Pipe II	✓	✓	✓	✓	✓	✓	166
62	液压输出油管总成 Hydraulic Take-off pipe	△	△	△	△	△	△	169
63	液压输出油管总成(多路阀) Hydraulic Take-off Pipe (Multi-way valve)	△	△	△	△	△	△	171
64	电器系统总成 Electrical System	✓	✓	✓	✓	✓	✓	174
65	电器系统总成I Electrical System I	✓	✓	✓	✓	✓	✓	177
66	电器系统总成II Electrical System II	✓	✓	✓	✓	✓	✓	182

"△"表示用户选装 May Be Selected By User

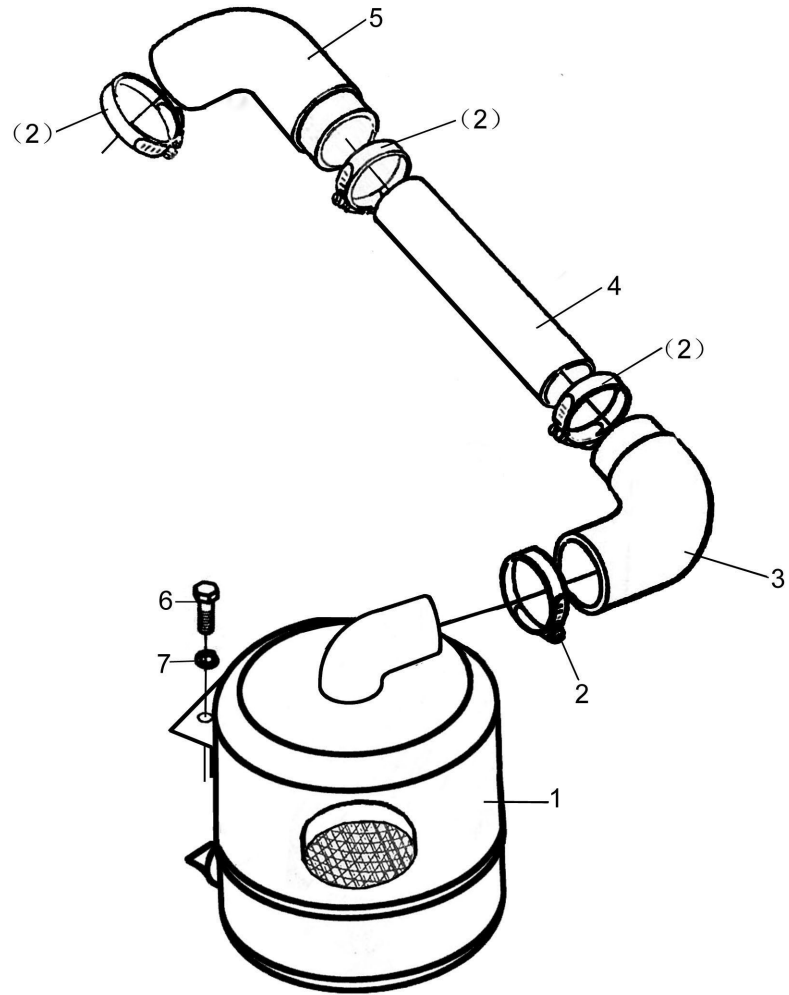


散热器总成
Radiator Assembly

散热器总成

Radiator Assembly

序号 Ser. No.	代 号 Part No.	名 称	Name	数量 Qty.
1	TY395.12.010-1	散热器总成 (YC350) -----TY395/3100	Radiator assembly-----TY395/3100	1
	4L22T.12.010-1	散热器总成 (YC350D) -----4L22T/BT	Radiator assembly-----4L22T/BT	1
	ZN390.12.010-1	散热器总成 (YC300B) -----ZN390/490	Radiator assembly-----ZN390/490	1
	304T.12.010-1	散热器总成 (YC304T) -----SL2105	Radiator assembly-----SL2105	1
2	TY395.106	拉杆	Rod	1
3	GB/T6170	螺母M8	Nut M8	2
4	TY395.101	出水管(TY3100/TY395)	Rubber tube	1
	SL3105BT.202	出水管(4L22T/4L22BT)	Rubber tube	1
	ZN390.102	出水管(ZN390/ZN490/4L22BT)	Rubber tube	1
	TY395.101	出水管(SL2105ABT)	Rubber tube	1
5	D16-ABA-50	喉箍Φ38-Φ55	Tube clamp Φ38-Φ55	4
6	TY395.102	进水管(TY3100/TY395)	Rubber tube	1
	Y385.109	进水管(4L22T)	Rubber tube	1
	4L22T.203	进水管(4L22BT)	Rubber tube	1
	ZN390.101-1	进水管(ZN390/ZN490)	Rubber tube	1
	SL2105.13.102	进水管(SL2105ABT)	Rubber tube	1
7	BL-178	橡胶垫	Rubber pad	2
8	GB/T97.1	垫圈12	Washer 12	2
9	GB/T889	螺母M12	Nut M12	2
10	B395.109	挡草板	Shutter	1
11	GB/T91	开口销2×16	Split pin 2×16	1
12	GB/T97.1	垫圈8	Washer 8	1

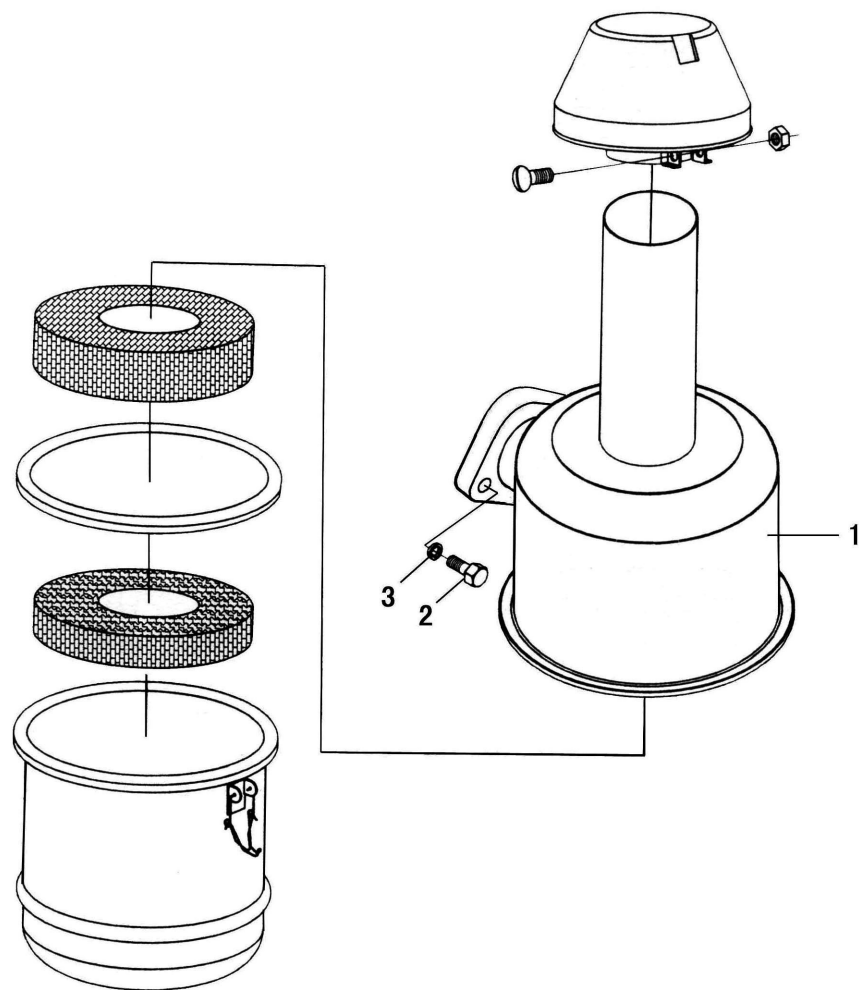


进气系统总成
Air Intake System

进气系统总成

Air Intake System

序号 Ser. No.	代号 Part No.	名称	Name	数量 Qty.
1	TY395.11.010A	空滤器总成(干式)	Air filter assembly	1
	SL2105.11.010B	空滤器总成(湿式)	Air filter assembly	1
2	D16-ABA-65	喉箍Φ50-65	Tube clampΦ50-65	4
3	TY395.104	橡胶管2	Rubber tube 2	1
4	TY395.105-2	进气管	Air filter tube	1
5	TY395.103-1	橡胶管1	Rubber tube 1	1
6	GB/T5783	螺栓M8×25	Bolt M8×25	
7	GB/T93	垫圈8	Washer 8	

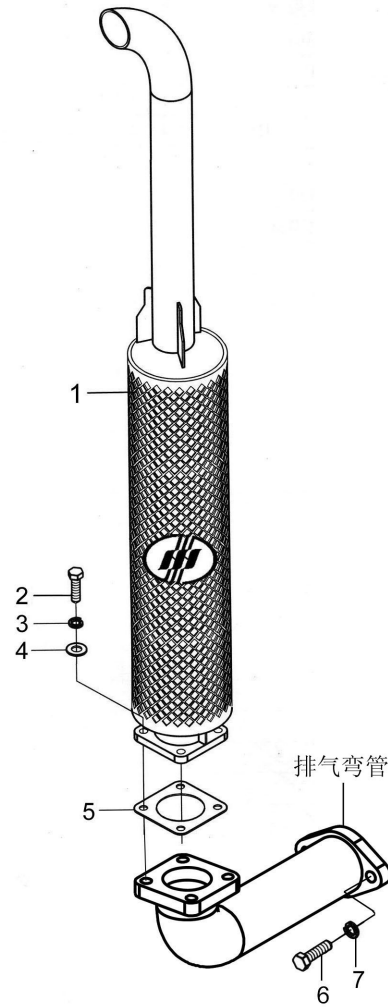


进气系统总成 II
Air Intake System II

进气系统总成 II

Air Intake System II

序号 Ser. No.	代号 Part No.	名称	Name	数量 Qty.
1	SL2105.11.010	空滤器总成	Air filter assembly	1
2	GB/T5783	螺栓M8×25	Bolt M8×25	1
3	GB/T93	垫圈8	Washer 8	1

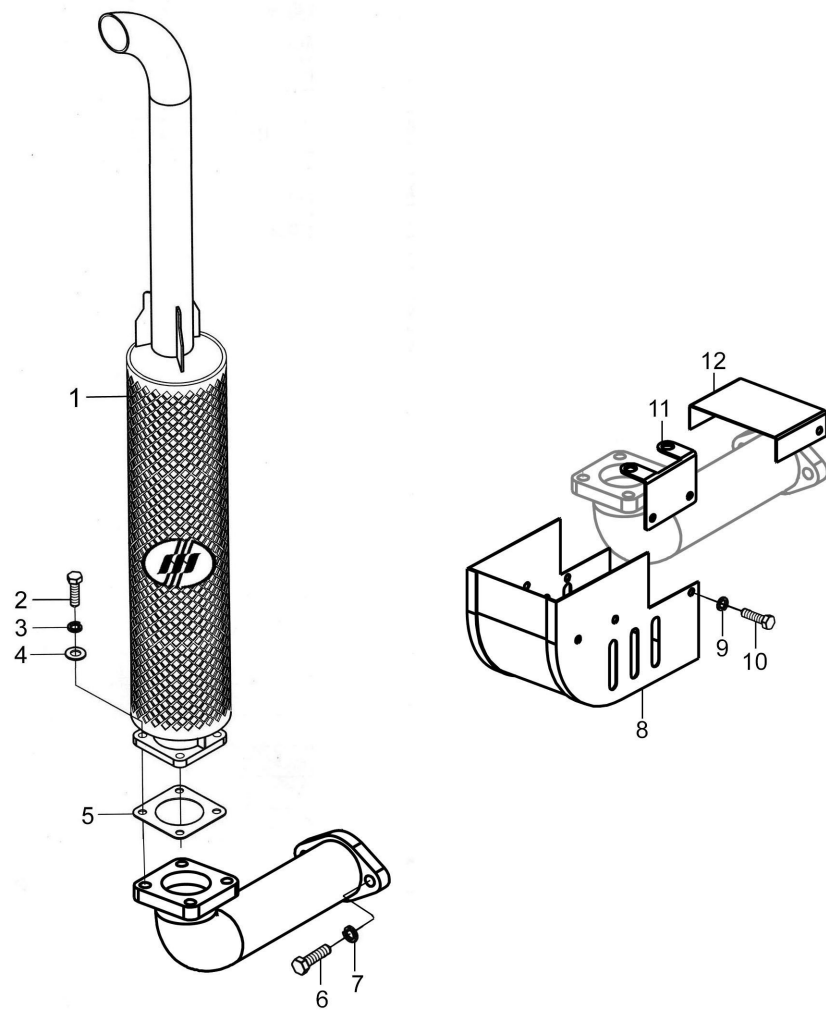


排气系统总成 I
Exhaust System I

排气系统总成 I

Exhaust System I

序号 Ser. No.	代 号 Part No.	名 称	Name	数量 Qty.
1	SL2105.10.010-1	消声器总成	Muffler assembly	1
	4L22T.10.010A	消声器总成 (EPAIV)	Muffler assembly	1
2	GB/T5783	螺栓M8×25	Bolt M8×25	4
3	GB/T93	垫圈8	Washer 8	4
4	GB/T97.1	垫圈8	Washer 8	4
5	Y385.10.119	消声器垫片	Muffler washer	1
6	GB/T5783	螺栓M10×30	Bolt M10×30	2
7	GB/T93	垫圈10	Washer 10	2
8	Y385.10.003	防护罩总成	Cover assembly	1
9	GB/T93	垫圈6	Washer 6	6
10	GB/T5783	螺栓M6×20	Bolt M6×20	6
11	TY395.10.014	护罩连接板焊合件I	Shield weld connection plate	1
12	TY395.10.013	护罩连接板焊合件	Shield weld connection plate	1

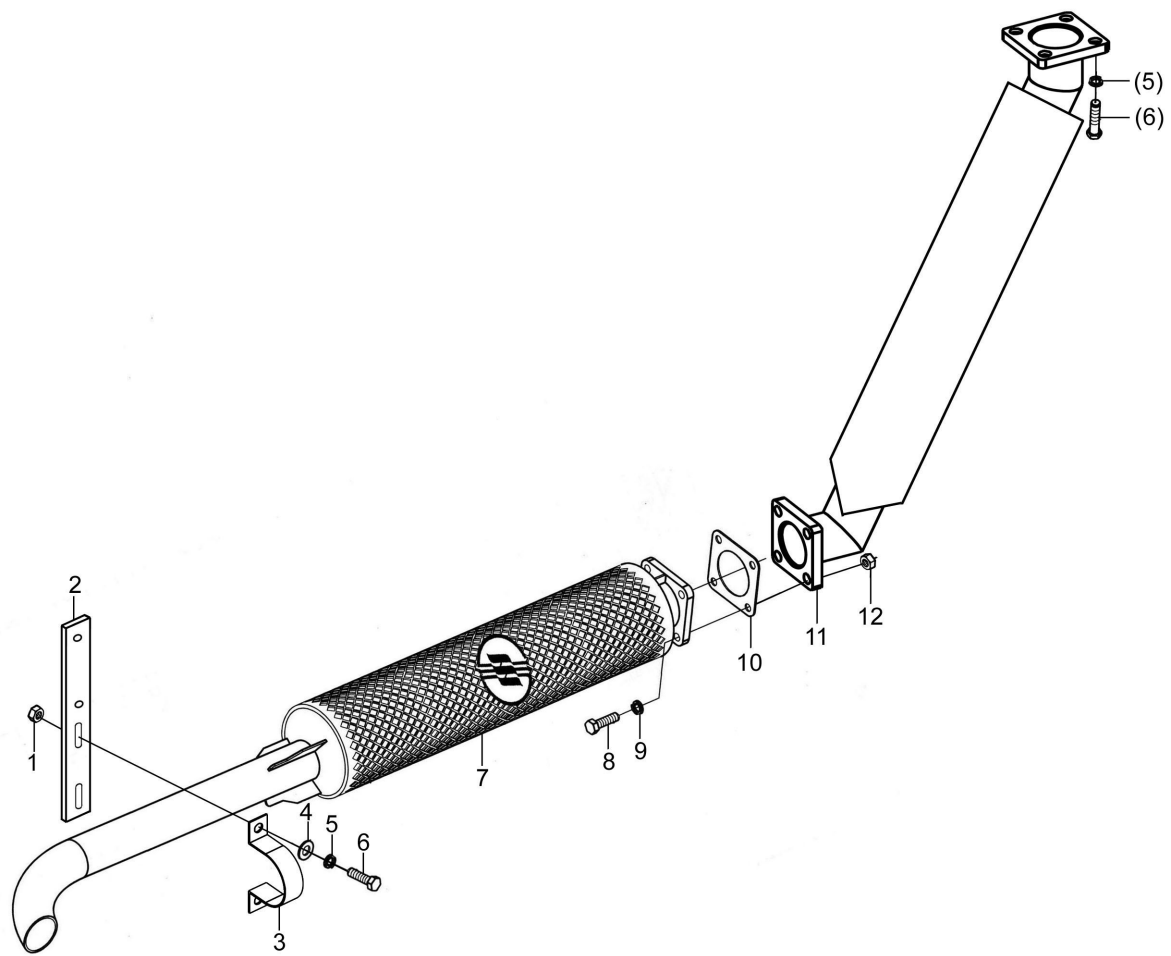


排气系统总成 II
Exhaust System II

排气系统总成 II

Exhaust System II

序号 Ser. No.	代 号 Part No.	名 称	Name	数量 Qty.
1	SL2105.10.010-1	消声器总成	Muffler assembly	1
	4L22T.10.010A	消声器总成 (EPAIV)	Muffler assembly	1
2	GB/T5783	螺栓M8×25	Bolt M8×25	4
3	GB/T93	垫圈8	Washer 8	4
4	GB/T97.1	垫圈8	Washer 8	4
5	Y385.10.119	消声器垫片	Muffler washer	1
6	GB/T5783	螺栓M10×30	Bolt M10×30	2
7	GB/T93	垫圈10	Washer 10	2
8	Y385.10.003	防护罩总成	Cover assembly	1
9	GB/T93	垫圈6	Washer 6	6
10	GB/T5783	螺栓M6×20	Bolt M6×20	6
11	TY395.10.014	护罩连接板焊合件I	Shield weld connection plate	1
12	TY395.10.013	护罩连接板焊合件	Shield weld connection plate	1

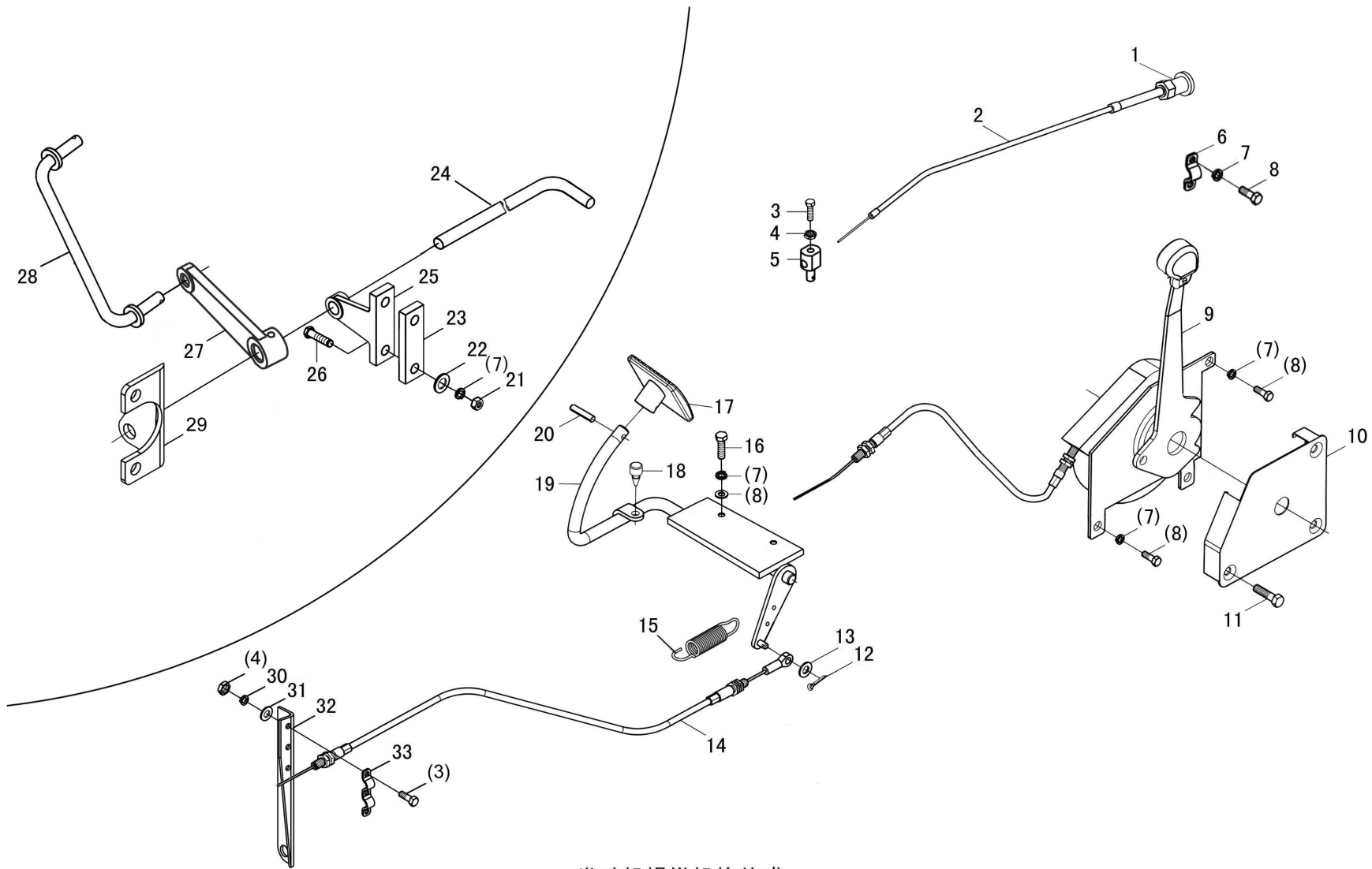


排气系统总成 III
Exhaust System III

排气系统总成 III

Exhaust System III

序号 Ser. No.	代 号 Part No.	名 称	Name	数量 Qty.
1	GB/T6170	螺母M8	Nut M8	4
2	TY395.10.104A	连接板	Connection plate	1
3	TY295.10.106	消声器固定卡	Muffler fixed card	1
4	GB/T97.1	垫圈8	Washer 8	6
5	GB/T93	垫圈8	Washer 8	6
6	GB/T5783	螺栓M8×25	Bolt M8×25	6
7	SL2105.10.010-1	消声器总成	Muffler assembly	1
8	GB/T5783	螺栓M10×30	Bolt M10×30	4
9	GB/T93	垫圈10	Washer 10	4
10	Y385.10.119	消声器垫片	Muffler washer	2
11	TY395.10.010	消声器连接管合件	The muffler tube connection	1
12	GB/T6170	螺母M10	Nut M10	4



发动机操纵机构总成
Engine Control Mechanism

发动机操纵机构总成

Engine Control Mechanism

序号 Ser. No.	代号 Part No.	名称	Name	数量 Qty.
1	184.20.151	手柄	bulb	1
2	300.20.025	熄火拉线总成 (常用型)	Extinguish wire assembly	1
	300.20.025A	熄火拉线总成 (配流线型铁机罩用)	Extinguish wire assembly	1
	300.20.025B	熄火拉线总成 (配驾驶室用)	Extinguish wire assembly	1
3	GB/T5783	螺栓M5*20	Bolt M5×20	6
4	GB/T6170	螺母M5	Nut M5	5
5	300.20.213	连接销	Pin	2
6	300.20.117	支座 (I)	Support (I)	1
7	GB/T93	垫圈6	Washer 6	5
8	GB/T5783	螺栓M6*16	Bolt M6×16	5
9	300.20.030	手油门总成	Hand throttle assembly	1
10	700.20.127A	手油门盖	Cover,hand throttle	1
11	GB/T68	螺钉M8*30	Bolt M8×30	3
12	GB/T91	开口销2×12	Split pin 2×12	4
13	GB/T97.1	垫圈6	Washer 6	9
14	300.20.031	脚油门拉线总成	Foot throttle wire assembly	1
15	300.20.125	回位弹簧	Return spring	1
16	GB/T5783	螺栓M8*20	Bolt M8×20	2
17	700.20.101	脚踏板	Foot pedal	1
18	700.20.107	橡胶塞	Rubber plug	1
19	300.20.027-1	脚油门焊合件	Foot pedal rocker weldment	1
20	GB/T879.1	弹性圆柱销5×20	Spring-type straight pin-slotted5×20	1
21	GB/T6170	螺母M8	Nut M8	2

续. 发动机操纵机构总成

Cont. Engine Control Mechanism

序号 Ser. No.	代号 Part No.	名称	Name	数量 Qty.
22	GB/T97.1	垫圈8	Washer 8	2
23	300.20.204	垫板	plate	1
24	300.20.120	减压手柄	Decompression handle	1
25	300.20.122	支座(Ⅲ)	Support (Ⅲ)	1
26	GB/T5783	螺栓M8*25	Bolt M8×25	2
27	300.20.121	减压摇臂	Decompression arm	1
28	300.20.016	减压拉杆焊合件(SL2105/ZN390)	Decompression pull rod(SL2105/ZN390)	1
	300.20.016B	减压拉杆焊合件(TY395/TY3100)	Decompression pull rod(TY395/TY3100)	1
	300.20.016C	减压拉杆焊合件(Y480/Y485)	Decompression pull rod(Y480/Y485)	1
29	300.20.118-1	支座(SL2105)	Support(SL2105)	1
	300.20.118B	支座(TY395/TY3100)	Support(TY395/TY3100)	1
	300.20.118C	支座(Y480/Y485)	Support(Y480/Y485)	1
	300.20.118D	支座(ZN390)	Support(ZN390)	1
30	GB/T93	垫圈5	Washer 5	5
31	GB/T97.1	垫圈5	Washer 5	5
32	300E.20.202	熄火软轴支架	Support	1
33	300E.20.203	压板	Press plate	1