

电器系统总成

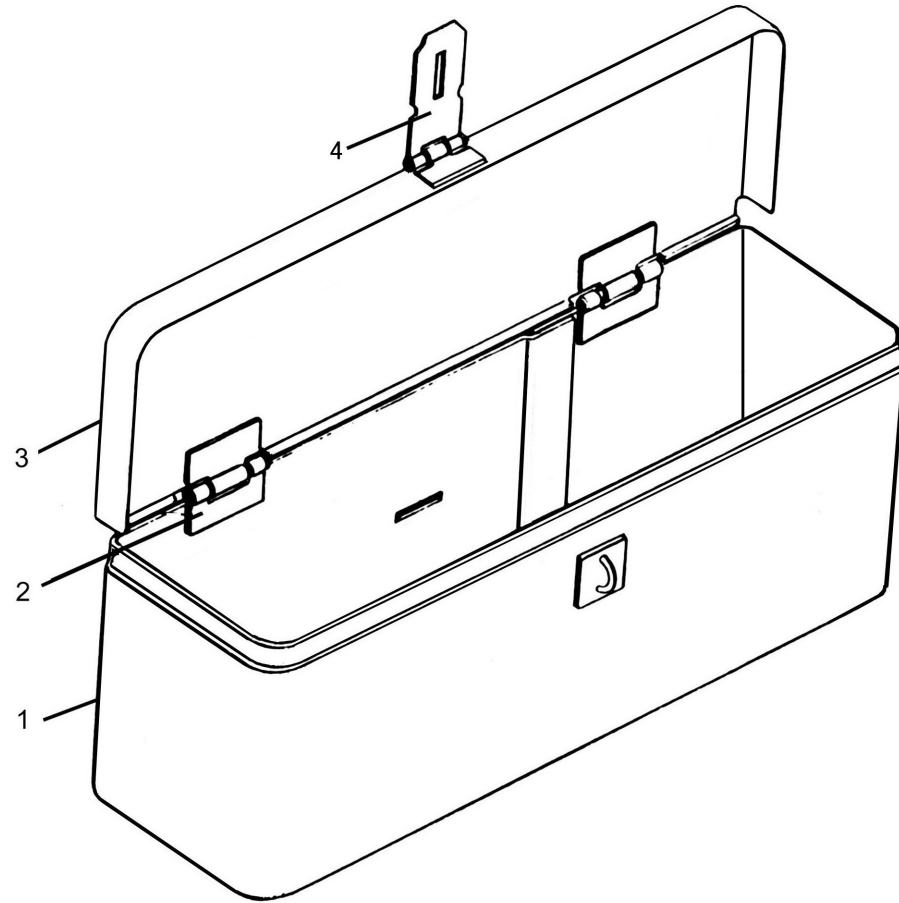
Electrical System Assy

| 序号<br>Ser.No. | 代 号<br>Part No | 名 称      | Name                    | 数量<br>(QTY) |
|---------------|----------------|----------|-------------------------|-------------|
| 1             | C502-Q280      | 喇叭       | Horn                    | 1           |
| 2             | GB/T93         | 垫圈 12    | Washer 12               | 3           |
| 3             | GB/T97.1       | 垫圈 12    | Washer 12               | 3           |
| 4             | C201-015       | 组合前大灯    | Front right             | 1           |
| 5             | C702-BX-410    | 保险丝盒     | Fuse box                | 1           |
| 6             | 250.48.035-3   | 保险丝盒支架   | Bracket                 | 1           |
| 7             | C402-008       | 制动灯开关    | Switch for brake light  | 1           |
| 8             | C501-001       | 电压调节器    | Regulator               | 1           |
| 9             | C503-SG123     | 电子闪光器    | Flasher                 | 1           |
| 10            | C502-J2        | 喇叭继电器    | Horn relay              | 1           |
| 11            | C107-30A       | 电流表      | Electric current meter  | 1           |
| 12            | C101-002       | 水温表      | Water temperature meter | 1           |
| 13            | C103-001       | 油压表      | Oil press meter         | 1           |
| 14            | C104           | 气压表      | Gas press meter         | 1           |
| 15            | GB/T6170       | 螺母 M12   | Nut M12                 | 1           |
| 16            | C207-003       | 后组合灯     | Rear light              | 2           |
| 17            | C402-010       | 转向灯开关    | Veer light switch       | 1           |
| 18            | C210-010       | 前大灯灯泡    | Front bulb              | 2           |
| 19            | C402-002       | 前大灯近远光开关 | Front light switch      | 1           |
| 20            | 250.48D.016    | 主线束      | Main harness            | 1           |
| 21            | C210-015       | 双色灯灯泡    | Double light bulb       | 2           |

续.电器系统总成

Cont.Electrical System Assy

| 序号<br>Ser.No. | 代 号<br>Part No | 名 称              | Name                          | 数量<br>(QTY) |
|---------------|----------------|------------------|-------------------------------|-------------|
| 22            | C304-003       | 转速表感应塞           | Speed sensor                  | 1           |
| 23            | C301-003       | 水温传感器            | Water temperature sensor      | 1           |
| 24            | C402-0031      | 预热启动开关           | Preheat starting switch       | 1           |
| 25            | 250.48.062C    | 柴油机线束            | Diesel engine harness         | 1           |
| 26            | C303-002       | 油压传感器            | Oil pressure plug             | 1           |
| 27            | C402-005       | 喇叭开关             | Horn switch                   | 1           |
| 28            | C402-002       | 后工作灯开关           | Tail lamp switch              | 1           |
| 29            | C203-001       | 后工作灯总成           | Tail lamp                     | 1           |
| 30            | C210-018       | 制动灯灯泡            | Bulb                          | 2           |
| 31            | 180.48.027-3   | 蓄电池至起动机电缆(长 910) | Cable,form battery to starter | 1           |
| 32            | 180.48.028     | 搭铁线总成(长 270)     | Earth cable, battery          | 1           |
| 33            | GB/T6170       | 螺母 M8            | Nut M8                        | 2           |
| 34            | C603-6QW-80H   | 蓄电池总成            | Battery                       | 1           |
| 35            | GB/T97.1       | 垫圈 8             | Washer 8                      | 2           |
| 36            | GB/T93         | 垫圈 8             | Washer 8                      | 2           |
| 37            | 250.48.063A    | 前大灯线束            | Headlamp harness              | 1           |
| 38            | 250.48.065A    | 右护板线束            | Right apron harness           | 1           |
| 39            | 250.48.064A    | 左护板线束            | Left apron harness            | 1           |

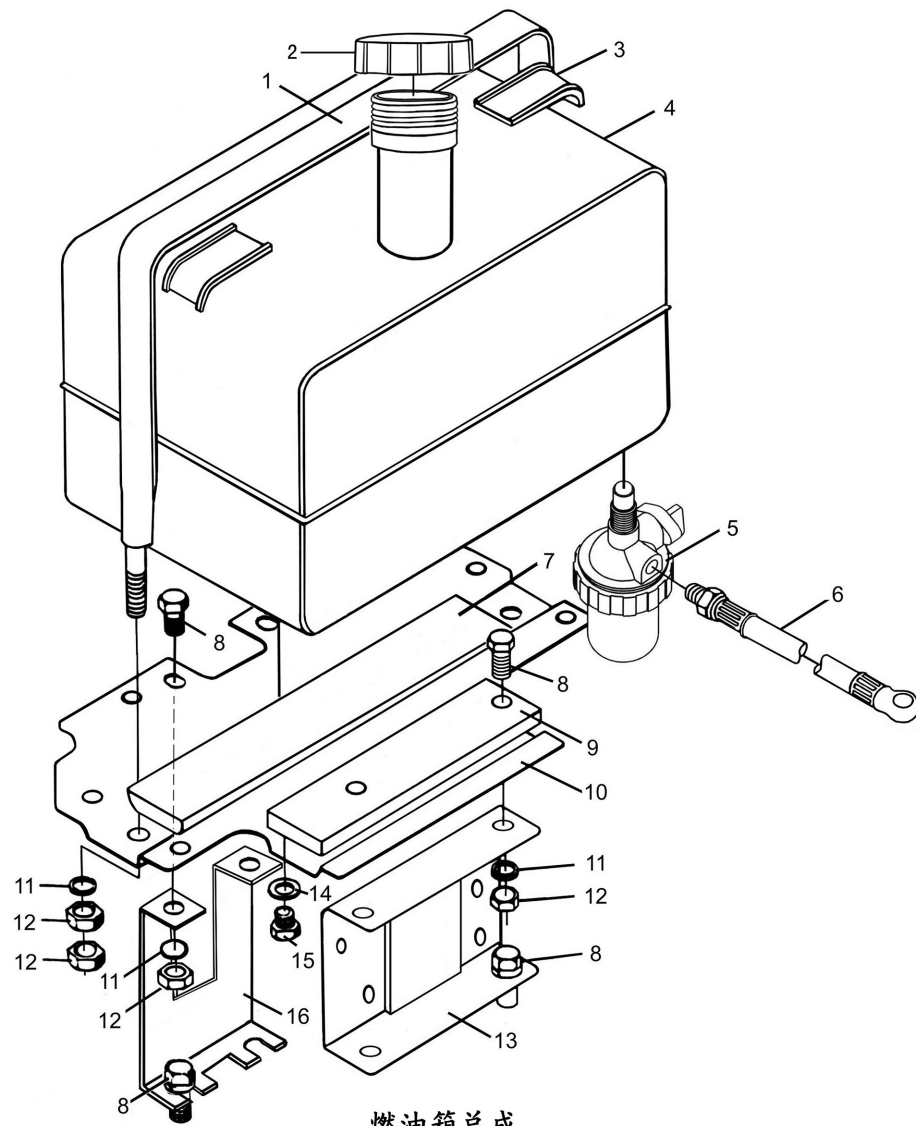


工具箱总成  
Tool Box  
118

工具箱总成(选装)

Tool Box (option)

| 序 号<br>Ser.No. | 代 号<br>Part No | 名 称   | Name  | 数量<br>(QTY) |
|----------------|----------------|-------|-------|-------------|
| 1              | 160.49.011-1   | 箱体焊合件 | Box   | 1           |
| 2              | 160.49.013     | 1" 铰链 | Hinge | 2           |
| 3              | 160.49.101-1   | 箱盖    | Cover | 1           |
| 4              | 160.49.014     | 锁扣 1" | Knot  | 1           |

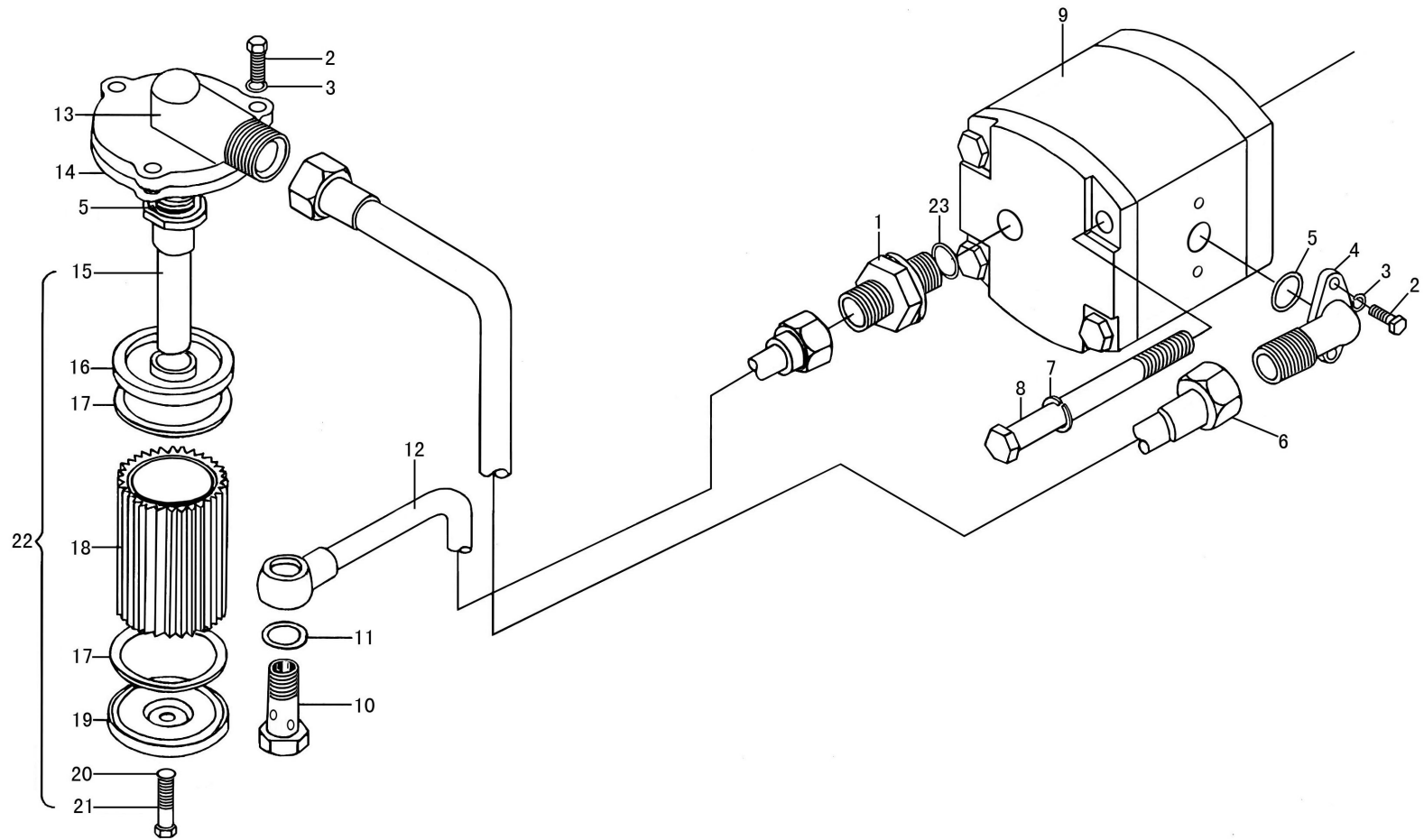


燃油箱总成  
Fuel Tank  
120

燃油箱总成

Fuel Tank

| 序号<br>Ser.No. | 代 号<br>Part No | 名 称              | Name                 | 数量 (QTY) |     |
|---------------|----------------|------------------|----------------------|----------|-----|
|               |                |                  |                      | 250      | 254 |
| 1             | 250.50.012-1   | 钢带焊合件            | Steel band           | 1        | 1   |
|               | 250.50.037-1   | 钢带焊合件(加大油箱)      | Steel band           | 1        |     |
| 2             | 250.50.022     | 油箱盖组件            | Fuel tank cap        | 1        | 1   |
| 3             | 184.50.101     | 钢带胶垫             | Rubber cushion       | 2        | 2   |
| 4             | 250.50.024G    | 油箱体焊合件(中置高口 165) | Fuel tank            | 1        |     |
|               | 250.50.024E    | 油箱体焊合件(加大型)      | Fuel tank            | 1        |     |
|               | 250.50.024D    | 油箱体焊合件(前置高口 165) | Fuel tank            |          | 1   |
| 5             | 250.50.020-1   | 沉淀杯总成            | Sedimentary cup      | 1        | 1   |
| 6             | 180.50.015-2   | 输油管总成            | Out-let fuel pipe    | 1        | 1   |
| 7             | 184.50.102-1   | 油箱后胶垫            | Rear rubber cushion  | 1        | 1   |
| 8             | GB/T5783       | 螺栓 M10×20        | Bolt M10×20          | 8        | 8   |
| 9             | 184.50.105-1   | 油箱前胶垫            | Front rubber cushion | 1        | 1   |
| 10            | 250.50.013-A   | 油箱撑板焊合件          | Support plate        | 1        | 1   |
| 11            | GB/T93         | 垫圈 10            | Washer10             | 10       | 10  |
| 12            | GB/T6170       | 螺母 M10           | Nut M10              | 8        | 8   |
| 13            | 184.50.103-1   | 油箱前支架(高 131)     | Front support(H131)  | 1        | 1   |
|               | 250.50.103-1   | 油箱前支架(高 115)     | Front support(H115)  | 1        | 1   |
| 14            | GB/T848        | 垫圈 10            | Washer 10            | 1        | 1   |
| 15            | 160.50.107     | 放油塞              | Drain plug           | 1        | 1   |
| 16            | 250.50.112-2   | 油箱后支架(高 225)     | Rear support(H225)   | 1        |     |
|               | 184.50.104-1   | 油箱后支架(高 213)     | Rear support(H213)   | 1        | 1   |
|               | 180YZ.50.104-4 | 油箱后支架(高 198)     | Rear support(H198)   | 1        | 1   |



液压油管及管路总成

Pump and Pipe

液压油管及管路总成

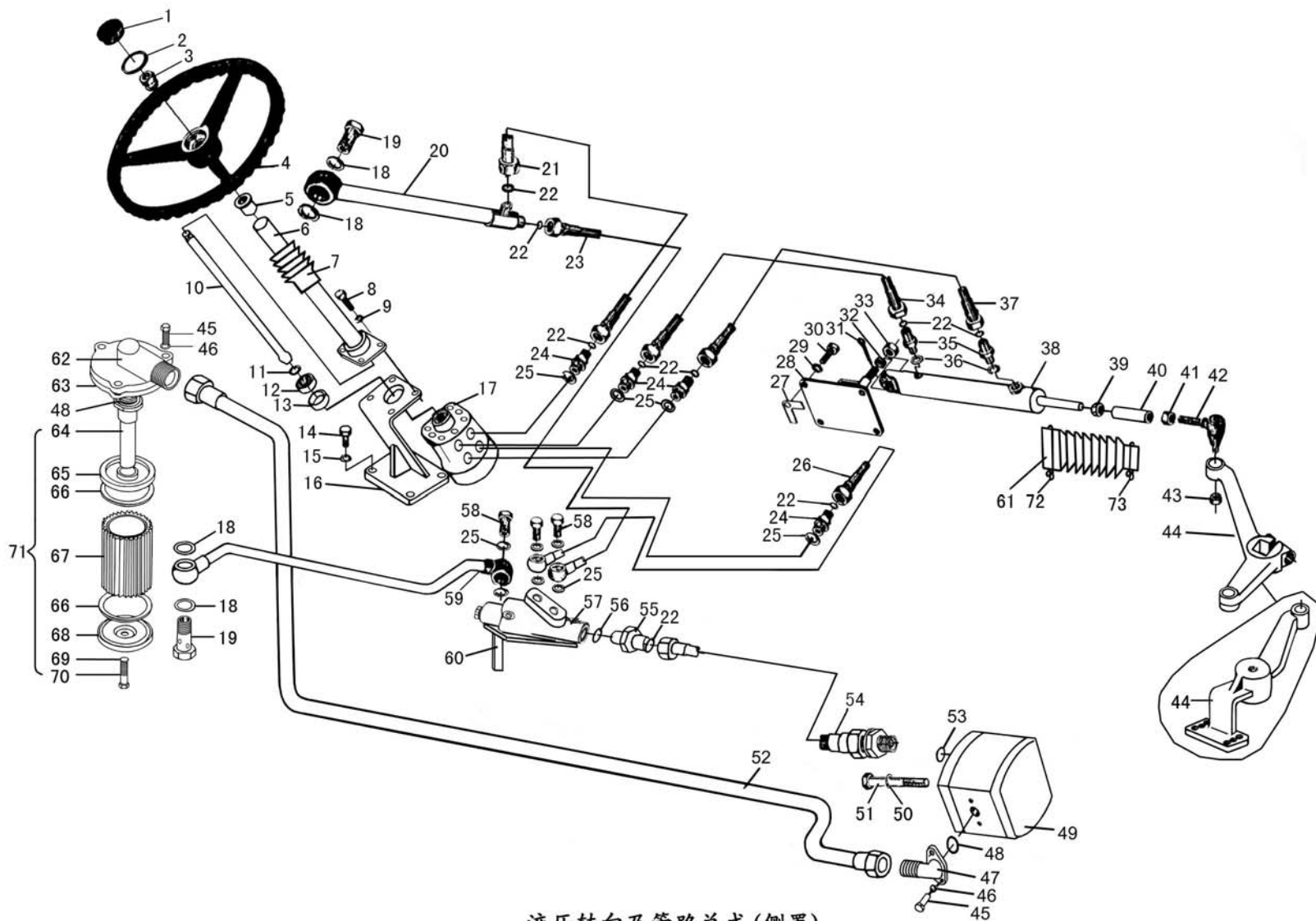
Pump and pipe

| 序号<br>Ser.No. | 代号<br>Part No  | 名称                   | Name             | 数量<br>(QTY) |
|---------------|----------------|----------------------|------------------|-------------|
| 1             | 180.54.104     | 液压油泵出油口接头            | Connector        | 1           |
| 2             | GB/T5783       | 螺栓 M8×25             | Bolt M8×25       | 5           |
| 3             | GB/T93         | 垫圈 8                 | Washer 8         | 5           |
| 4             | 180.54.101     | 进油管接头                | Connector        | 1           |
| 5             | GB3452.1       | O形密封圈 18×2.65        | O-ring18×2.65    | 2           |
| 6             | 180.54.010-B   | 进油管总成 (离合器壳/二缸机用)    | Inlet pipe       | 1           |
|               | JY250.54.010-D | 进油管总成 (离合器壳/三缸机用)    | Inlet pipe       | 1           |
|               | 254 I .54.010  | 进油管总成 (爬壳/二缸机用)      | Inlet pipe       | 1           |
|               | 254 I .54.010A | 进油管总成 (爬壳/三缸机用)      | Inlet pipe       | 1           |
|               | X300.54.020    | 进油管总成(300A/304A 机型用) | Inlet pipe       | 1           |
| 7             | GB/T93         | 垫圈 10                | Washer 10        | 2           |
| 8             | GB/T5782       | 螺栓 M10×100           | Bolt M10×100     | 2           |
| 9             | CBN-E306       | 齿轮泵(左)               | Gear pump (left) | 1           |
| 10            | 160.54.108     | 空心螺栓                 | Bolt             | 1           |
| 11            | 160.54.107     | 垫圈                   | Washer           | 2           |
| 12            | 180.54.011-B   | 出油管总成 (离合器壳/二缸机用)    | Delivery pipe    | 1           |
|               | JY250.54.011-D | 出油管总成 (离合器壳/三缸机用)    | Delivery pipe    | 1           |
|               | 254 I .54.011  | 出油管总成 (爬壳/二缸机用)      | Delivery pipe    | 1           |
|               | 254 I .54.011A | 出油管总成 (爬壳/三缸机用)      | Delivery pipe    | 1           |
|               | X300.54.021    | 出油管总成(300A/304A 机型用) | Delivery pipe    | 1           |
| 13            | 160.54.109     | 吸油管接头                | Connector        | 1           |

续.液压油管及管路总成

Cont.Pump and pipe

| 序 号<br>Ser.No. | 代 号<br>Part No | 名 称            | Name            | 数量<br>(QTY) |
|----------------|----------------|----------------|-----------------|-------------|
| 14             | 160.54.110     | 纸垫             | Gasket          | 1           |
| 15             | 160.54.118-1   | 吸油管            | Connective pipe | 1           |
| 16             | 160.54.119     | 滤网上盖           | Cover           | 1           |
| 17             | 160.54.121     | 密封垫片           | Sealing washer  | 2           |
| 18             | 160.54.014     | 滤网总成           | Screen          | 1           |
| 19             | 160.54.120     | 滤网下盖           | Cover           | 1           |
| 20             | GB/T97.1       | 垫圈 6           | Washer 6        | 1           |
| 21             | GB/T5783       | 螺栓 M6×18       | Bolt M6×18      | 1           |
| 22             | 160.54.013-1   | 吸油滤清器          | Filter          | 1           |
| 23             | GB3452.1       | O 形密封圈 15×2.65 | O-ring 15×2.65  | 1           |



液压转向及管路总成(侧置)  
Hydraulic steering and & pipe

液压转向及管路总成 (油缸侧置)

Hydraulic steering & Pipe

| 序号<br>Ser.No. | 代 号<br>Part No | 名 称             | Name                     | 数量<br>(QTY) |
|---------------|----------------|-----------------|--------------------------|-------------|
| 1             | 160.40.107-2   | 方向盘盖            | Cover                    | 1           |
| 2             | 160.40.106     | 橡胶垫             | Rubber cushion           | 1           |
| 3             | GB/T6171       | 螺母 M16×1.5      | Nut M16×1.5              | 1           |
| 4             | 160.40.015-A   | 方向盘总成           | Steering wheel assembly  | 1           |
| 5             | 160.40.104     | 上油封             | Upper oil seal           | 1           |
| 6             | 160YZ.40.013-3 | 转向管柱总成          | Column                   | 1           |
| 7             | 160YZ.40.180   | 转向管柱波纹管         | Rubber line              | 1           |
| 8             | GB/T5783       | 螺栓 M10×30       | Bolt M10×30              | 4           |
| 9             | GB/T93         | 垫圈 10           | Washer 10                | 4           |
| 10            | 160YZ.40.108-2 | 转向柱             | Column                   | 1           |
| 11            | GB/T894.1      | 挡圈 20           | Circlip 20               | 1           |
| 12            | GB/T276        | 轴承 6204         | Bearing 6204             | 1           |
| 13            | 160YZ.40.131   | 挡圈              | Circlip                  | 1           |
| 14            | GB/T5783       | 螺栓 M12×30       | Bolt M12×30              | 4           |
| 15            | GB/T93         | 垫圈 12           | Washer 12                | 4           |
| 16            | 180YZ.40.014-2 | 转向器支承座焊合件       | Support seat             | 1           |
| 17            | BZZ-80         | 转向器             | Steering                 | 1           |
| 18            | FHDQ18         | 复合垫圈 18         | Washer 18                | 4           |
| 19            | 160.54.108     | 空心螺栓(M18×1.5)   | Bolt                     | 2           |
| 20            | 160YZ.40.017-3 | 回油管焊合件          | Return oil pipe          | 1           |
| 21            | 160.YZ.40.026  | 转向器回油管总成(L=300) | Steering return oil pipe | 1           |

续.液压转向及管路总成 (油缸侧置)

Cont.Hydraulic steering & Pipe

| 序号<br>Ser.No. | 代 号<br>Part No  | 名 称               | Name                    | 数量<br>(QTY) |
|---------------|-----------------|-------------------|-------------------------|-------------|
| 22            | GB3452.1        | O形密封圈 10×2.65     | O-ring 10×2.65          | 8           |
| 23            | 160YZ.40.019    | 分流阀回油管总成(L=650)   | Valve return inlet pipe | 1           |
| 24            | 160YZ.40.107-2  | 转向器进出油口接头         | Connector               | 4           |
| 25            | FHDQ20          | 复合垫圈 20           | Washer 20               | 12          |
| 26            | 180YZ.40.012    | 转向器进油管总成(L=550)   | Steering inlet pipe     | 1           |
| 27            | 184.37.350      | 纸垫                | Gasket                  | 1           |
| 28            | 180YZ.40.010-1  | 转向油缸后支承座焊合件       | Rear support seat       | 1           |
| 29            | GB/T93          | 垫圈 14             | Washer 14               | 4           |
| 30            | GB/T5783        | 螺栓 M14×30         | Bolt M14×30             | 4           |
| 31            | GB/T91          | 销 4×32            | Pin 4×32                | 1           |
| 32            | 160YZ.40.102    | 隔套                | Bush                    | 1           |
| 33            | GB/T6179        | 螺母 M16            | Nut M16                 | 1           |
| 34            | 160YZ.40.015-1  | 转向油管总成(L=450)     | Left pipe               | 1           |
| 35            | 160YZ.40.103-2  | 转向油缸进出油口接头        | Connector               | 2           |
| 36            | FHDQ14          | 复合垫圈 14           | Washer 14               | 2           |
| 37            | 160YZ.40.015-1  | 转向油管总成(L=450)     | Right pipe              | 1           |
| 38            | 180YZ.40.041-B  | 侧置转向油缸(行程 135/2W) | Steering cylinder       | 1           |
|               | 184YZ.40.041-B  | 侧置转向油缸(行程 160/4W) | Steering cylinder       | 1           |
| 39            | GB/T6171        | 螺母 M16×1.5        | Nut M16×1.5             | 1           |
| 40            | 180YZ.40.104-2  | 接杆(L=80)          | Connecting rod          | 1           |
|               | 184YZ.40.104-1A | 接杆(L=150)         | Connecting rod          | 1           |
|               | 254YZ.40.104-1  | 接杆(L=160)         | Connecting rod          | 1           |

续.液压转向及管路总成 (油缸侧置)

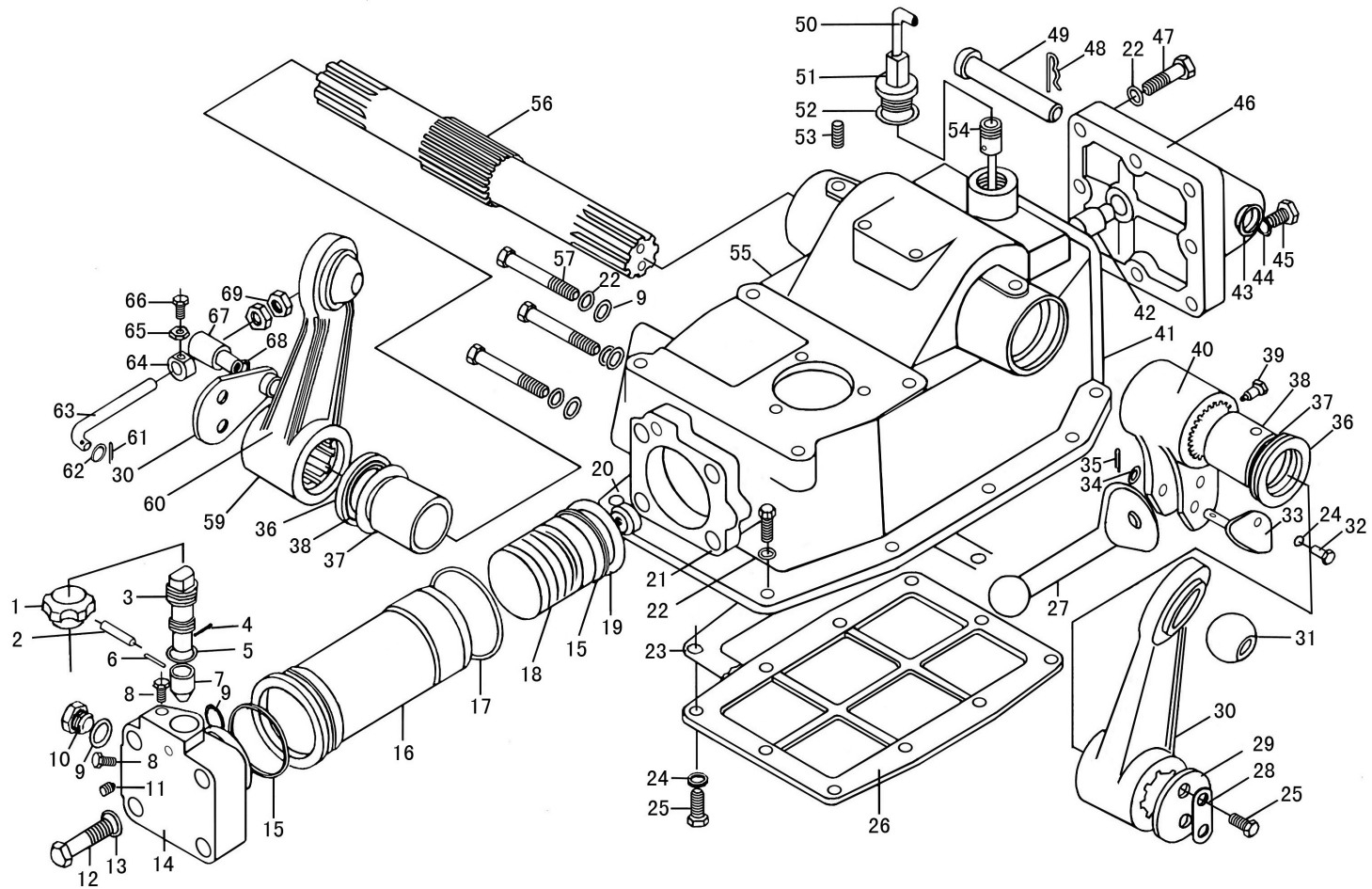
Cont.Hydraulic steering & Pipe

| 序号<br>Ser.No. | 代 号<br>Part No | 名 称              | Name                      | 数量<br>(QTY) |
|---------------|----------------|------------------|---------------------------|-------------|
| 41            | GB/T6173       | 螺母 M16×1.5(左)    | Nut M16×1.5(Left)         | 1           |
| 42            | 160YZ.31.020-1 | 拉杆接头总成(左/2W)     | Pull rod joint(Right) arm | 1           |
|               | 184.31.024-1   | 拉杆接头总成(左/4W)     | Pull rod joint(Right) arm | 1           |
| 43            | GB/T899        | 螺母 M12           | Nut M12                   | 1           |
| 44            | 160YZ.31.113-1 | 左转向臂             | Left steering knuckle     | 1           |
|               | 254YZ.31.160-1 | 左转向臂(4W)         | Left steering knuckle     | 1           |
| 45            | GB/T5783       | 螺栓 M8×25         | Bolt M8×25                | 5           |
| 46            | GB/T93         | 垫圈 8             | Washer 8                  | 5           |
| 47            | 180.54.101     | 进油管接头            | Connector                 | 1           |
| 48            | GB3452.1       | O 形密封圈 18×2.65   | O-ring 18×2.65            | 2           |
| 49            | CBN-E314       | 齿轮泵(左)           | Gear pump (left)          | 1           |
| 50            | GB/T93         | 垫圈 10            | Washer 10                 | 2           |
| 51            | GB/T5782       | 螺栓 M10×100       | Bolt M10×100              | 2           |
| 52            | 250.54.012     | 进油管总成            | Inlet pipe                |             |
|               | 250.54.010-1   | 进油管总成            | Inlet pipe                |             |
| 53            | FHDQ18         | 复合垫圈 18          | Washer 18                 | 1           |
| 54            | 184YZ.54.022   | 齿轮泵出油管总成 (L=400) | Delivery pipe             | 1           |
| 55            | 160YZ.40.105-2 | 分流阀接头            | Connector                 | 1           |
| 56            | FHDQ24         | 复合垫圈 24          | Washer 24                 | 1           |
| 57            | FLD-6          | 分流阀              | Valve                     | 1           |

续.液压转向及管路总成 (油缸侧置)

Cont.Hydraulic steering & Pipe

| 序 号<br>Ser.No. | 代 号<br>Part No | 名 称           | Name                 | 数量<br>(QTY) |
|----------------|----------------|---------------|----------------------|-------------|
| 58             | 160YZ.40.106   | 铰接螺栓(M20×1.5) | Bolt                 | 3           |
| 59             | 160YZ.54.011-3 | 进油管总成         | Inlet Pipe           | 1           |
| 60             | 160YZ.40.018   | 分流阀支撑架        | Support bracket      | 1           |
| 61             | 160YZ.40.176   | 油缸波纹管         | Cylinder rubber line | 1           |
| 62             | 160.54.109     | 吸油管接头         | Connector            | 1           |
| 63             | 160.54.110     | 纸垫            | Gasket               | 1           |
| 64             | 160.54.118-1   | 吸油管           | Connective pipe      | 1           |
| 65             | 160.54.119     | 滤网上盖          | Cover                | 1           |
| 66             | 160.54.121     | 密封垫片          | Sealing washer       | 2           |
| 67             | 160.54.014     | 滤网总成          | Screen               | 1           |
| 68             | 160.54.120     | 滤网下盖          | Cover                | 1           |
| 69             | GB/T97.1       | 垫圈 6          | Washer 6             | 1           |
| 70             | GB/T5783       | 螺栓 M6×18      | Bolt M6×18           | 1           |
| 71             | 160.54.013-1   | 吸油滤清器         | Filter               | 1           |
| 72             | 250YZ.40.213   | 卡箍 (大)        | Clamp                | 1           |
| 73             | 250YZ.40.212   | 卡箍 (小)        | Clamp                | 1           |



提升器总成  
 Hudranlic Power Lift  
 130

## 提升器总成

## Hydraulic Power Lift

| 序号<br>Ser.No. | 代 号<br>Part No | 名 称              | Name             | 数量<br>(QTY) |
|---------------|----------------|------------------|------------------|-------------|
| 1             | 160.55.121     | 手轮               | Cap              | 1           |
| 2             | GB/T879        | 销 5×30           | Pin B5×30        | 1           |
| 3             | 160.55.128-2   | 调节阀杆             | Spool rod        | 1           |
| 4             | GB/T119        | 销 3×20           | Pin B3×20        | 1           |
| 5             | GB3452.1       | O 形密封圈 17×2.65   | O-ring 17×2.65   | 1           |
| 6             | GB/T119        | 销 B2×14          | Pin B2×14        | 1           |
| 7             | 160.55.129     | 调节阀              | Adjusting valve  | 1           |
| 8             | GB/T5781       | 螺栓 M10×12        | Bolt M10×12      | 2           |
| 9             | GB3452.1       | O 形密封圈 13.2×2.65 | O-ring 13.2×2.65 | 3           |
| 10            | 160.55.120     | 螺塞               | Plug             | 2           |
| 11            | GB/T829        | 螺钉 M5×6×4        | Screw M5×6×4     | 2           |
| 12            | GB/T5782       | 螺栓 M14×60        | Bolt M14×60      | 4           |
| 13            | GB/T93         | 垫圈 14            | Washer 14        | 4           |
| 14            | 160.55.126-4   | 缸头               | Cylinder cap     | 1           |
| 15            | GB3452.1       | O 形密封圈 63×5.7    | O-ring 63×5.7    | 2           |
| 16            | 160.55.102     | 油缸筒              | Cylinder         | 1           |
| 17            | 160.55.112     | O 形密封圈 75×1.8    | O-ring 75×1.8    | 1           |
| 18            | 160.55.130     | 活塞               | Piston           | 1           |
| 19            | GB3452.1       | 挡圈 A63×2         | Washer A63×2     | 2           |
| 20            | 160.55.131     | 活塞球座             | Piston ball seat | 1           |
| 21            | GB/T5783       | 螺栓 M10×30        | Bolt M10×30      | 10          |

续.提升器总成

Cont.Hydraulic Power Lift

| 序号<br>Ser.No. | 代 号<br>Part No | 名 称                | Name                | 数量<br>(QTY) |
|---------------|----------------|--------------------|---------------------|-------------|
| 22            | GB/T93         | 垫圈 10              | Washer 10           | 21          |
| 23            | 160.55.116-1   | 底板纸垫               | Gasket              | 1           |
| 24            | GB/T93         | 垫圈 8               | Washer 8            | 10          |
| 25            | GB/T5783       | 螺栓 M8×20           | Bolt M8×20          | 14          |
| 26            | 160.55.115-1   | 提升器壳体底板            | Bottom cover        | 1           |
| 27            | 160.55.132-1   | 顶杆                 | Piston rod          | 1           |
| 28            | 160.55.111     | 止动垫片               | Washer              | 2           |
| 29            | 160.55.109     | 提升轴压板              | Plate               | 1           |
| 30            | 160.55.134     | 提升臂                | Lift arm            | 2           |
| 31            | 160.55.135     | 提升臂球头              | Spherical joint     | 2           |
| 32            | GB/T5783       | 螺栓 M8×12           | Bolt M8×12          | 8           |
| 33            | 160.55.020-1   | 插销焊合件              | Pin                 | 1           |
| 34            | GB/T97.1       | 垫片 22              | Washer 22           | 1           |
| 35            | GB/T91         | 开口销 4×40           | Pin 4×40            | 1           |
| 36            | GB/T9877.1     | 旋转唇形密封圈 FB42×62×10 | Oil seal FB42×62×10 | 2           |
| 37            | 160.55.114     | 密封挡片               | Sealing leaf        | 2           |
| 38            | 160.55.106     | 轴套                 | Bush                | 2           |
| 39            | GB/T85         | 螺钉 M8×1×16         | Screw M8×1×16       | 1           |
| 40            | 160.55.133-1   | 内提升臂               | Innet arm           | 1           |
| 41            | 160.55.119     | 后端盖纸垫              | Case                | 1           |
| 42            | 160.55.141-1   | 限位销                | Stop pin            | 1           |

续.提升器总成

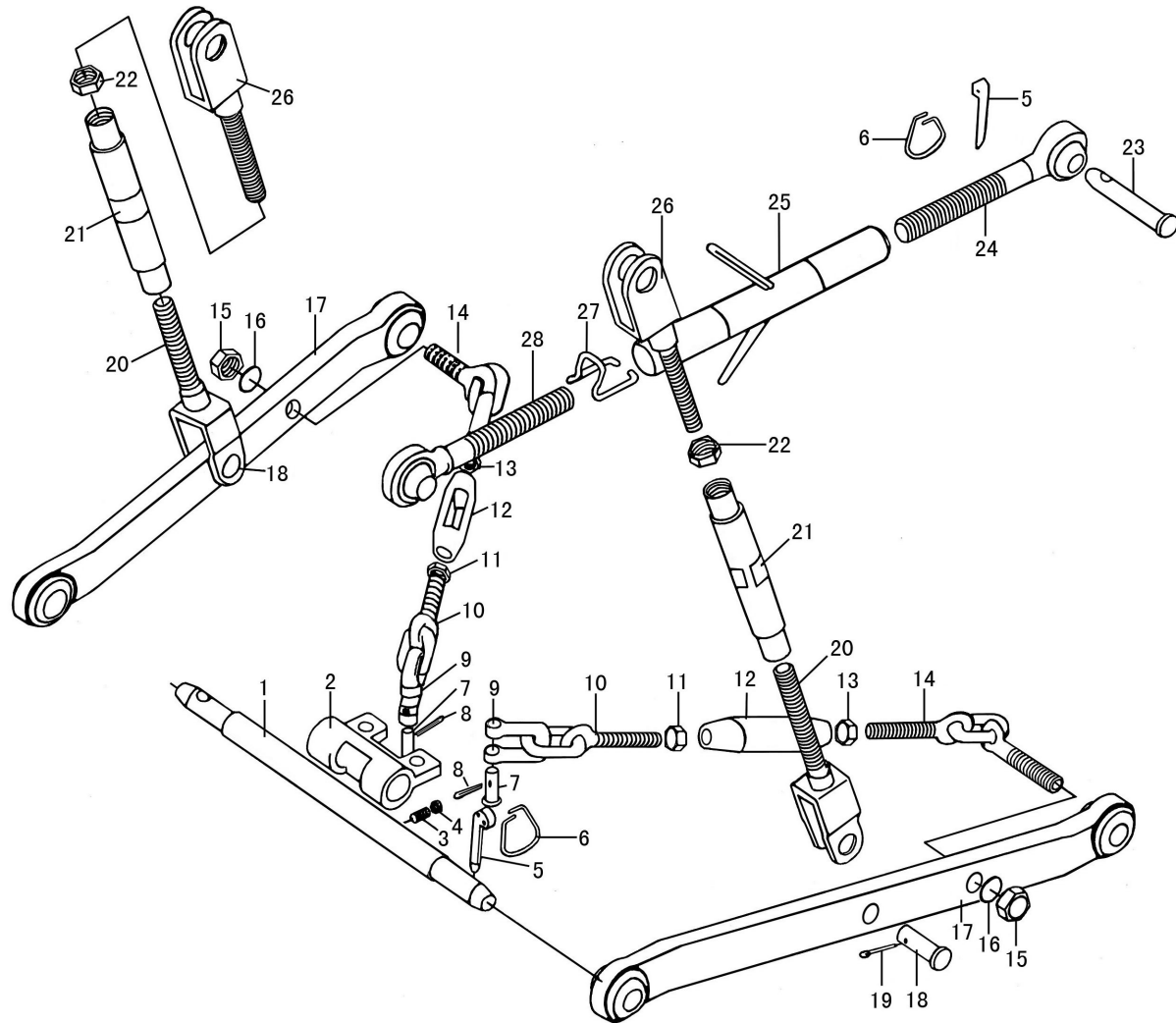
Cont.Hydraulic Power Lift

| 序号<br>Ser.No. | 代 号<br>Part No | 名 称            | Name              | 数量<br>(QTY) |
|---------------|----------------|----------------|-------------------|-------------|
| 43            | GB/T97.1       | 垫圈 20          | Washer 20         | 1           |
| 44            | GB3452.1       | O 形密封圈 9×1.8   | O-ring 9×1.8      | 1           |
| 45            | 160.55.108     | 放油塞            | Drain plug        | 1           |
| 46            | 160.55.140-1   | 后端盖            | Rear cover        | 1           |
| 47            | GB/T5782       | 螺栓 M10×40      | Bolt M10×40       | 8           |
| 48            | 160.31.105     | 弹簧锁销           | Stop pin          | 1           |
| 49            | 160.55.107     | 上拉杆前连接销        | Link pin          | 1           |
| 50            | 184.31.124-1   | 通气管            | Air pipe          | 1           |
| 51            | 160.55.136-1   | 加油盖体           | Filler plug       | 1           |
| 52            | 160.55.104     | 垫片             | Washer            | 1           |
| 53            | GB/T829        | 螺钉 M8×10×8     | Screw M8×10×8     | 2           |
| 54            | 160.55.021     | 量油尺总成          | Dipstick          | 1           |
| 55            | 160.55.101-2   | 提升器壳体          | Case              | 1           |
| 56            | 160.55.103     | 提升轴            | Shaft             | 1           |
| 57            | GB/T5782       | 螺栓 M10×75      | Bolt M10×75       | 3           |
| 58            | GB3452.1       | O 形密封圈 19×2.65 | O-ring 19×2.65    | 1           |
| 59            | 160.55.013     | 提升臂总成          | Lift arm assembly | 2           |
| 60            | 160.55.016-1   | 挡板总成           | Plate             | 1           |
| 61            | GB/T91         | 开口销 2×16       | Pin 2×16          | 1           |
| 62            | GB/T97.1       | 垫圈 8           | Washer 8          | 1           |
| 63            | 160.55.113-2   | 回位推杆           | Push rod          | 1           |

续.提升器总成

Cont.Hydraulic Power Lift

| 序号<br>Ser.No. | 代 号<br>Part No | 名 称      | Name          | 数量<br>(QTY) |
|---------------|----------------|----------|---------------|-------------|
| 64            | 160.55.110     | 挡块       | Locating lump | 1           |
| 65            | GB/T6170       | 螺母 M6    | Nut M6        | 1           |
| 66            | GB/T5783       | 螺栓 M6×20 | Bolt M6×20    | 1           |
| 67            | 160.55.105     | 挡销       | Stop pin      | 1           |
| 68            | GB/T97.1       | 垫圈 12    | Washer 12     | 1           |
| 69            | GB/T6170       | 螺母 M8    | Nut M8        | 2           |



悬挂机构总成 I  
Suspension Mechanism I

悬挂机构总成 I

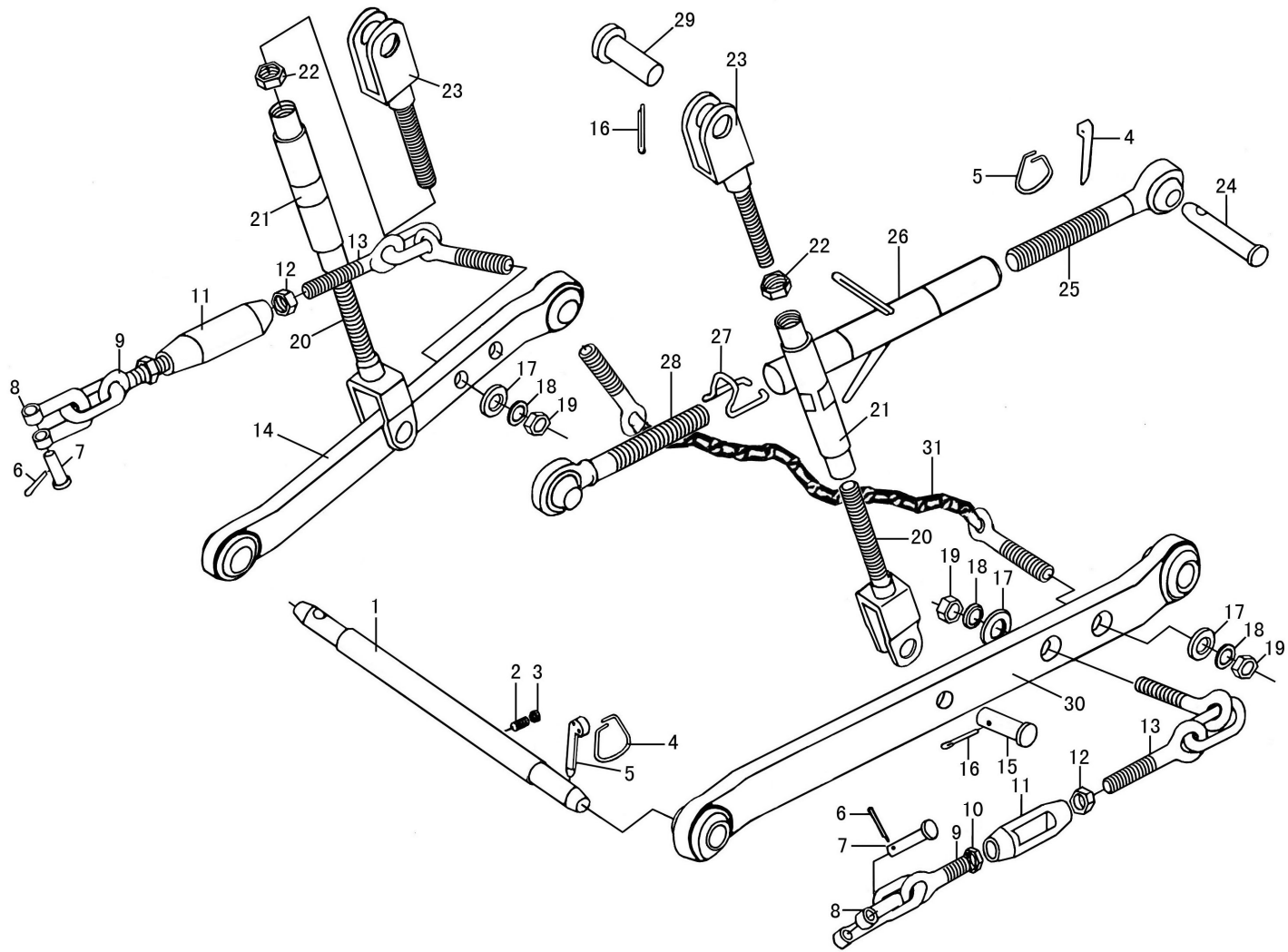
Suspension Mechanism I

| 序 号<br>Ser.No. | 代 号<br>Part No | 名 称        | Name                 | 数量<br>(QTY) |
|----------------|----------------|------------|----------------------|-------------|
| 1              | 160.56.102     | 下拉杆固定轴     | Shaft                | 1           |
| 2              | 160.56.103     | 限位链摆动板     | Plate                | 1           |
| 3              | 160.31.104     | 止动螺钉       | Stop screw           | 1           |
| 4              | GB/T 6170      | 螺母 M12     | Nut M12              | 1           |
| 5              | 160.56.120     | 锁销         | Stop pin             | 5           |
| 6              | 160.56.119     | 锁销环        | Ring                 | 5           |
| 7              | GB/T 882       | 销轴 B10×45  | Axis pin B10×45      | 2           |
| 8              | GB/T 91        | 开口销 3.2×16 | Pin 3.2×16           | 2           |
| 9              | 160.56.126-A   | U形卡        | Connenting ring      | 2           |
| 10             | 160.56.032     | 前调节链环合件    | Adjusting link       | 2           |
| 11             | GB/T 6170      | 螺母 M14     | Nut M14              | 2           |
| 12             | 160.56.133     | 调节套        | Adjusting sleeve     | 2           |
| 13             | GB/T 6170      | 螺母 M14 (左) | Nut M14(left rotate) | 2           |
| 14             | 160.56.033     | 后调节链焊接总成   | Rear adjusting chain | 2           |
| 15             | GB/T 6170      | 螺母 M16     | Nut M16              | 2           |
| 16             | GB/T 93        | 垫圈 16      | Washer 16            | 2           |
| 17             | 160.56.013-A   | 下拉杆总成      | Lower link           | 2           |
| 18             | 160.56.101     | 提升杆连接销     | Pin                  | 2           |
| 19             | GB/T 91        | 销 4×25     | Pin 4×25             | 4           |
| 20             | 160.56.016     | 提升杆下调节杆焊合件 | Adjusting link       | 2           |
| 21             | 160.56.105-1   | 提升杆螺管      | Thread pipe          | 2           |

续.悬挂机构总成 I

Cont.Suspension Mechanism I

| 序 号<br>Ser.No. | 代 号<br>Part No | 名 称        | Name                 | 数量<br>(QTY) |
|----------------|----------------|------------|----------------------|-------------|
| 22             | GB/T 6171      | 螺母 M18×1.5 | Nut M18×1.5          | 2           |
| 23             | 160.56.118-1   | 上拉杆后连接销    | Pin                  | 1           |
| 24             | 160.56.019-A   | 上拉杆后调节杆压合件 | Rear adjusting rod   | 1           |
| 25             | 160.56.018-B   | 上拉杆调节螺管焊合件 | Thread pipe          | 1           |
| 26             | 160.56.026     | 提升杆上调节杆焊合件 | Adjusting upper link | 2           |
| 27             | 160.56.028     | 锁紧环        | Locking ring         | 1           |
| 28             | 160.56.017-A   | 上拉杆前调节杆压合件 | Front adjusting rod  | 1           |



悬挂机构总成 II  
 Suspension Mechanism II  
 138

悬挂机构总成 II

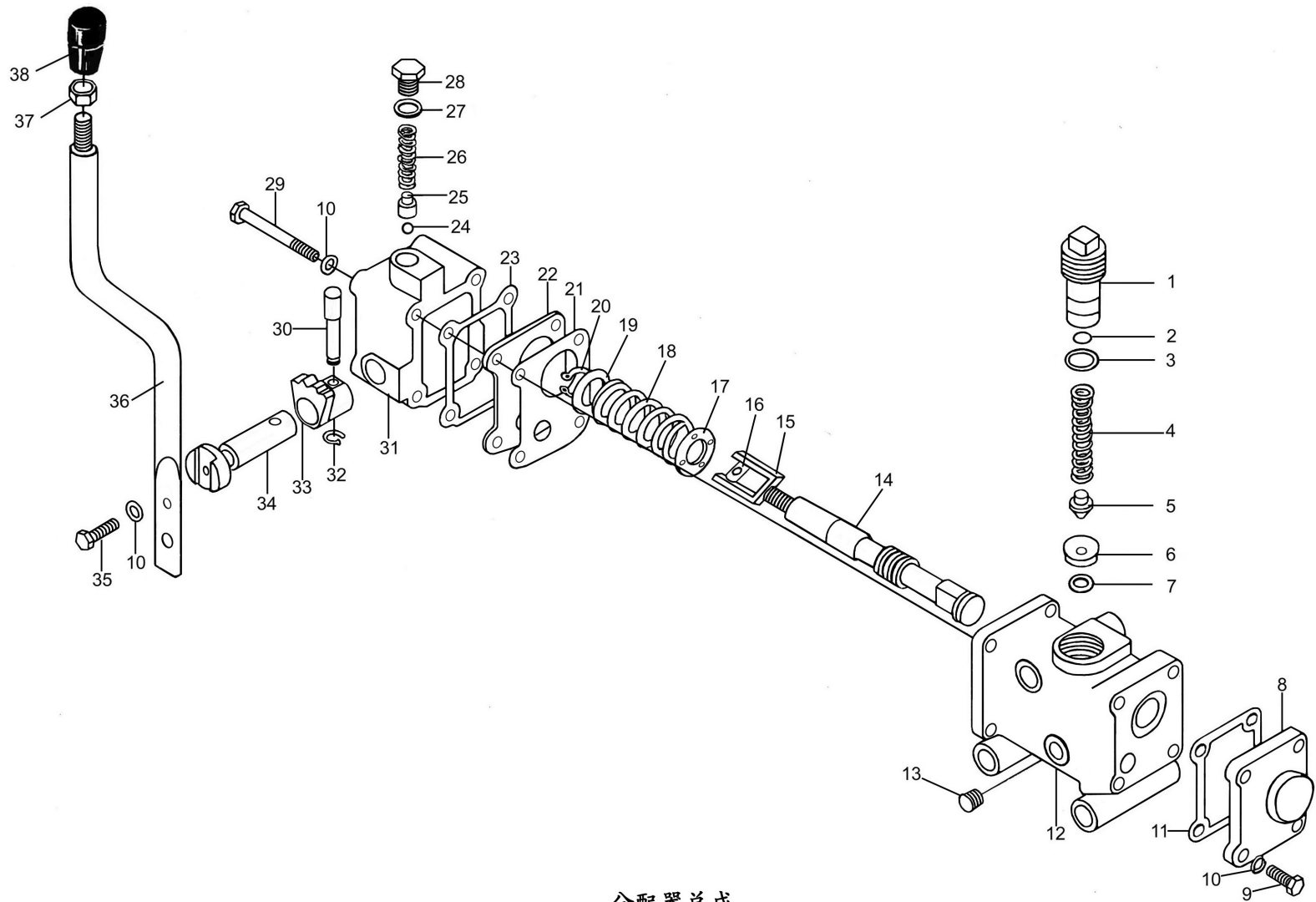
Suspension Mechanism II

| 序号<br>Ser.No. | 代 号<br>Part No | 名 称        | Name                 | 数量<br>(QTY) |
|---------------|----------------|------------|----------------------|-------------|
| 1             | 160.56.102     | 下拉杆固定轴     | Shaft                | 1           |
| 2             | 160.31.104     | 止动螺钉       | Stop screw           | 1           |
| 3             | GB/T6170       | 螺母 M12     | Nut M12              | 1           |
| 4             | 160.56.119     | 锁销环        | Ring                 | 5           |
| 5             | 160.56.120     | 锁销         | Stop pin             | 5           |
| 6             | 184.56.102     | 弹簧锁销( I )  | Stop pin             | 2           |
| 7             | 184.56.101-1   | 提升杆连接销     | Connecting pin       | 2           |
| 8             | 160.56.126-A   | U 形卡       | Connecting ring      | 2           |
| 9             | 184.56.032     | 前调节链环焊合件   | Adjusting link       | 2           |
| 10            | GB/T6170       | 螺母 M14     | Nut M14              | 2           |
| 11            | 160.56.133     | 调节套        | Adjusting sleeve     | 2           |
| 12            | GB/T6170       | 螺母 M14(左)  | Nut M14 (left)       | 2           |
| 13            | 184.56.033     | 后调节链环焊接总成  | Rear adjusting chain | 2           |
| 14            | 250.56.021-1   | 右下拉杆总成     | Right lower link     | 1           |
| 15            | GB/T882        | 销轴 B16×45  | Axis pin B16×45      | 4           |
| 16            | GB/T91         | 销 4×25     | Pin 4×25             | 4           |
| 17            | 160.56.134     | 大垫圈        | Washer               | 4           |
| 18            | GB/T93         | 垫圈 16      | Washer 16            | 4           |
| 19            | GB/T6170       | 螺母 M16     | Nut M16              | 4           |
| 20            | 160.56.016     | 提升杆下调节杆焊合件 | Adjusting link       | 1           |
|               | 160.56.105-1   | 提升杆螺管      | Thread pipe          | 2           |
| 21            |                |            |                      |             |

续.悬挂机构总成 II

Cont.Suspension Mechanism II

| 序 号<br>Ser.No. | 代 号<br>Part No | 名 称        | Name                 | 数量<br>(QTY) |
|----------------|----------------|------------|----------------------|-------------|
| 22             | GB/T6171       | 螺母 M18×1.5 | Nut M18×1.5          | 2           |
| 23             | 250.56.013     | 提升杆上调节杆焊合件 | Adjusting upper link | 2           |
| 24             | 160.56.118-1   | 上拉杆后连接销    | Pin                  | 1           |
| 25             | 160.56.019-A   | 上拉杆后调节杆压合件 | Rear adjusting rod   | 1           |
| 26             | 184.56.018-1   | 上拉杆调节螺管焊合件 | Thread pipe          | 1           |
| 27             | 160.56.028     | 锁紧螺母焊合件    | Locking nut          | 1           |
| 28             | 160.56.017-A   | 上拉杆前调节杆压合件 | Front adjusting rod  | 1           |
| 29             | 160.56.101     | 提升杆连接销     | Pin                  | 2           |
| 30             | 250.56.020-1   | 左下拉杆总成     | Left lower link      | 1           |
| 31             | 250.56.022     | 下拉杆限位链总成   |                      | 1           |



分配器总成  
Valve  
141

## 分配器总成

## Valve

| 序号<br>Ser.No. | 代 号<br>Part No | 名 称            | Name           | 数量<br>(QTY) |
|---------------|----------------|----------------|----------------|-------------|
| 1             | 18FP.57.119-1  | 压紧螺塞           | Plug           | 1           |
| 2             | 160.57.121     | 调整垫片           | Adjusting shim | 按需要         |
| 3             | GB3452.1       | O形密封圈 15×2.65  | O-ring15×2.65  | 1           |
| 4             | 160.57.122     | 安全阀弹簧          | Spring         | 1           |
| 5             | 160.57.123     | 安全阀阀芯          | Relief valve   | 1           |
| 6             | 18FP.57.101    | 安全阀阀座          | Valve seat     | 1           |
| 7             | GB3452.1       | O形密封圈 9.5×2.65 | O-ring9.5×2.65 | 2           |
| 8             | 18FP.57.102    | 前盖             | Front cover    | 1           |
| 9             | GB/T5783       | 螺栓 M5×16       | Bolt M5×16     | 4           |
| 10            | GB/T93         | 垫圈 5           | Washer 5       | 9           |
| 11            | 18FP.57.103    | 前盖纸垫           | Gasket         | 1           |
| 12            | 18FP.57.104-2  | 分配器壳体          | Valve body     | 1           |
| 13            | 18FP.57.116    | 锥螺塞            | Bevel plug     | 1           |
| 14            | 18FP.57.113-B  | 滑阀             | Sliding valve  | 1           |
| 15            | 18FP.57.131    | 连接叉头           | Yoke           | 1           |
| 16            | 18FP.57.130    | 销套             | Bush           | 1           |
| 17            | 18FP.57.115    | 弹簧挡片           | Stop plate     | 1           |
| 18            | 18FP.57.114    | 滑阀回位弹簧         | Spring         | 1           |
| 19            | GB/T97.1       | 垫圈 14          | Washer 14      | 2           |
| 20            | GB/T894        | 挡圈 15          | Circlip 15     | 1           |
| 21            | 18FP.57.105    | 挡板纸垫           | Gasket         | 1           |

续.分配器总成

Cont.Valve

| 序号<br>Ser.No. | 代 号<br>Part No | 名 称      | Name          | 数量<br>(QTY) |
|---------------|----------------|----------|---------------|-------------|
| 22            | 18FP.57.106    | 挡板       | Plate         | 1           |
| 23            | 18FP.57.107    | 后盖纸垫     | Gasket        | 1           |
| 24            | GB/T308        | 钢球 5     | Ball 5        | 1           |
| 25            | 14FP.57.118    | 定位弹簧座    | Spring seat   | 1           |
| 26            | 14FP.57.119    | 定位弹簧     | Spring        | 1           |
| 27            | 14FP.57.121    | 垫片       | Washer        | 1           |
| 28            | 14FP.57.120    | 螺堵       | Plug          | 1           |
| 29            | GB/T5782       | 螺栓 M5×55 | Bolt M5×55    | 4           |
| 30            | 18FP.57.132-1  | 拨销       | Pin           | 1           |
| 31            | 18FP.57.108-B  | 后盖       | Rear cover    | 1           |
| 32            | GB/T894.1      | 挡圈 6     | Circlip 6     | 1           |
| 33            | 14FP.57.104-1  | 定位块      | Locating lump | 1           |
| 34            | 18FP.57.109-2  | 手柄轴      | Shaft         | 1           |
| 35            | GB/T5783       | 螺栓 M5×10 | Bolt M5×10    | 2           |
| 36            | X180.57.117    | 分配器手柄    | Handle        | 1           |
| 37            | GB/T93         | 垫圈 8     | Washer 8      | 1           |
| 38            | 160.57.042     | 分配器手柄合件  | Knob          | 1           |

**黄海金马-18~30 系列轮式拖拉机零件图册**

**HHJM 18~30 SERIES WHEELED TRACTOR PARTS CATALOGUE**

**黄海金马-180/220/250/250A/254/254A/300A/304A 型**

**HHJM - 180/220/250/250A/254/254A/300A/304A MODEL**

**技术部 主编**

**Technology Department Editor-in-chief**

**马恒达悦达(盐城)拖拉机有限公司**

**Mahindra Yueda(Yancheng) Tractor Co., Ltd.**

**\* \* \***

**开本: 787×1092 1/16 编号: Z02-01-001**

**PAPER SIZE: 787×1092 1/16 CODE: Z02-01-001**

**2010 年第 2 版 2011 年 1 月第 1 次印刷**

**2010 SECOND EDITION JANUARY, 2011 1st PRINTING**



马恒达悦达(盐城)拖拉机有限公司  
Mahindra Yueda (Yancheng) Tractor Co., Ltd.

地址: 江苏省盐城经济开发区嫩江路9号

Address: No.9 Nengjiang Road, Yancheng economic  
development zone, Jiangsu province.

电话 Tel: (0515) 88260118 (总机 Telephone exchange) 88231352

传真 Fax: (0515) 88231121 邮编 Zip code: 224002

Http://www.jm-tractor.com

E-mail: tractor@yantuo.cn

jsb@yantuo.cn