



黄海金马18-30系列轮式拖拉机零件图册

® HHJM 18-30 SERIES WHEELED TRACTOR PARTS CATALOGUE

马恒达悦达（盐城）拖拉机有限公司
Mahindra Yueda (Yancheng) Tractor Co., Ltd.

前 言

1. 《金马系列拖拉机零件图册》是根据我公司现行生产的系列产品图样编写的，供国内用户选购零件时参考，也可帮助用户了解该系列拖拉机的结构和装配关系。

2. 图册中每张图样后都附有零件明细表，在数量栏里分别标出各机型的装配数量，对装配位置相同，结构或尺寸稍有不同，用于不同机型的零件，采用相同的序号，并在明细表数量里按机型分别标出。

同一张图上重复出现的零件，采用相同序号。

3. 由于金马系列拖拉机具有极高的通用性，因而在图册编制过程中，如果同一部件，仅少数零件不相同，为减少篇幅，我们就统用了同一张部件图，如果变动较大时，就另行编制了部件图及该部件的目录。

4. 金马-180B 型拖拉机与金马-220 型拖拉机除发动机外其余零部件完全相同，因而在图册中都以金马-220 表示。市场上有部分金马-250/250A 机型配置了离合器壳体，其底盘部分与金马 180/220 相同，图册中的金马-250/250A/254/254A/300A/304A 都为配爬行档壳体的拖拉机，请用户注意区分。JM-300A/304A 为新产品。为此用户在选择零部件时，必须同时说明零部件名称，代号及产品出厂日期，以免发生差错。

5. 由于产品不断的改进，因而本图册可能与实际结构有所不同，敬请用户注意。

马恒达·悦达(盐城)拖拉机有限公司

FOREWORD

No 1. This 《Jinma Series Tractor Parts Catalogue》 is compiled according to the drawings of serial products we are manufacturing at present. It serves as a guide to help our users understand the constructions of these tractors and order their spare parts .

No 2. Every illustrated part has a parts name list in the illustrated part lists. This number of parts used for one type of tractor is shown in the "Qty" column of the name list .

For those parts mouted in the same position,used for different tractors and those constructures or size are slightly different, their Ser. No. are the same . Which are indicated in the "Qty" column according to the tractor models .

If a part appears twice or more times on the same illustrated page, its Ser. No. remains unchanged .

No 3. Jima series tractors have high inheritablity. During the editing, if a sorts of section is only with few different parts, adopt the same illustration, so as to reduce the work of edition.If the change of illustrations is great, edit the section illustations and catalogues in additional .

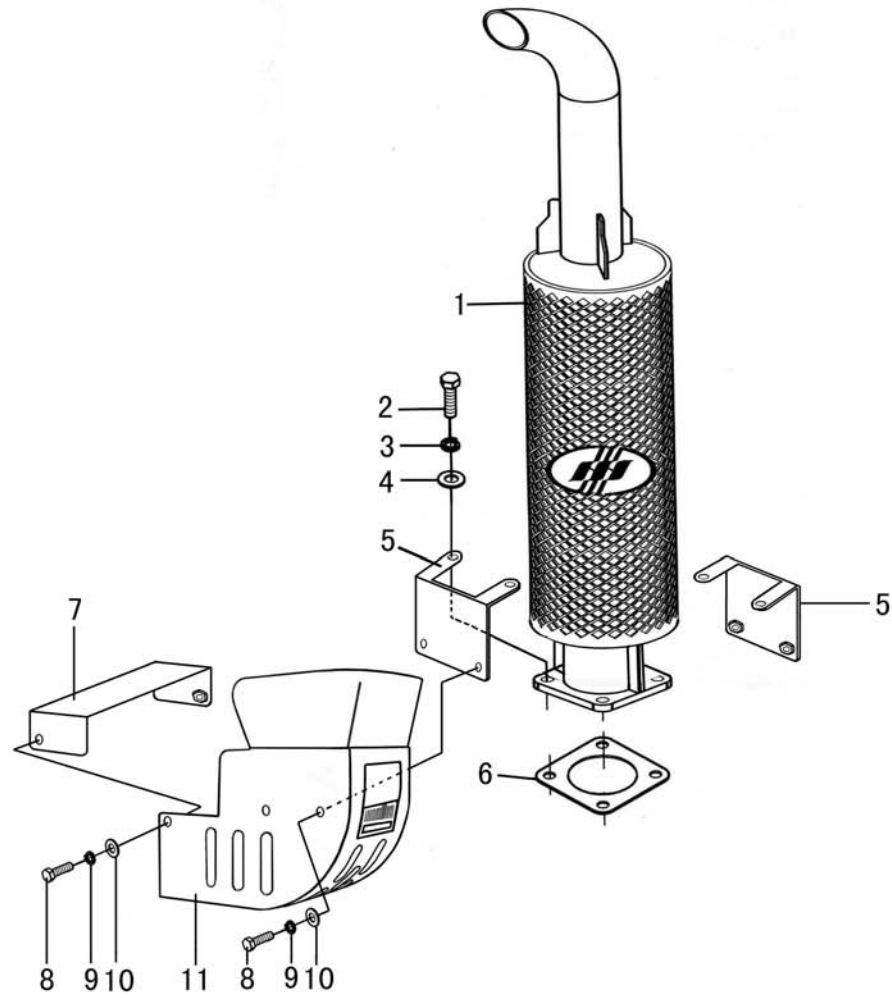
No 4. Jima-180B tractor is completely same with Jima-180 tractor, Jima-220 tractor is completely same with Jima-180 tractor apart from engine and front axle. So we only edit Jima-180 section illustrations and catalogues in the book. users are requested to take note of that. JM-X300 is a new production. In order to make a right supply, when ordering, please state the parts name, parts code number according to the list and ex-works date .

No 5. The tractor will be improved constantly.Therefore it is possible that tractors supplied may be slightly different from what are given in this 《Jima Series Tractor Parts Catalogue》 . Users are required to take a note of that .

MAHINDRA YUEDA (YANCHENG) TRACTOR MANUFACTURING CO.,LTD

目 录 CONTENTS

| 序 号 Ser.No. | 名 称 | Name | 机 型 Model | | | | | | | | 页号 Page |
|----------------|-------------|----------------------------|-----------|-----|-----|------|-----|------|------|------|------------|
| | | | 180 | 220 | 250 | 250A | 254 | 254A | 300A | 304A | |
| 1 | 消声器总成 | Exhaust System | √ | √ | √ | √ | √ | √ | √ | √ | 1 |
| 2 | 发动机操纵机构总成 1 | Engine Control Mechanism1 | | | √ | √ | √ | √ | √ | √ | 3 |
| 3 | 发动机操纵机构总成 2 | Engine Control Mechanism 2 | √ | √ | | | | | | | 6 |
| 4 | 离合器总成 | Clutch | | | | | √ | √ | | √ | 9 |
| 5 | 离合器总成 | Clutch | | | √ | √ | √ | √ | √ | √ | 13 |
| 6 | 离合器总成 | Clutch | √ | √ | | | | | | | 17 |
| 7 | 前驱动桥总成 | Front Axle | | | | | √ | √ | | √ | 22 |
| 8 | 前轴总成 1 | Front Axle 1 | √ | | | | | | | | 29 |
| 9 | 前轴总成 2 | Front Axle 2 | | √ | √ | | | | | | 33 |
| 10 | 前轴总成 3 | Front Axle 3 | | | | √ | | | √ | | 37 |
| 11 | 导向轮总成 | Directive Wheel | √ | √ | √ | √ | | | √ | | 41 |
| 12 | 前驱动轮总成 | Front Driving Wheel | | | | | √ | √ | √ | √ | 43 |
| 13 | 驱动轮总成 | Driving Wheel | √ | √ | √ | √ | √ | √ | √ | √ | 45 |
| 14 | 牵引装置总成 1 | Drawbar 1 | √ | √ | √ | √ | √ | √ | √ | √ | 47 |
| 15 | 牵引装置总成 2 | Drawbar 2 | √ | √ | √ | √ | √ | √ | √ | √ | 49 |
| 16 | 牵引装置总成 3 | Drawbar 3 | √ | √ | √ | √ | √ | √ | √ | √ | 51 |
| 17 | 牵引装置总成 4 | Drawbar 4 | √ | √ | √ | √ | √ | √ | √ | √ | 53 |
| 18 | 变速箱盖总成(防跳档) | Drive Gearbox Cover | √ | √ | √ | √ | √ | √ | √ | √ | 55 |
| 19 | 传动箱总成 1 | Drive Gearbox 1 | √ | √ | | | | | | | 58 |
| 20 | 传动箱总成 2 | Drive Gearbox 2 | | | √ | √ | √ | √ | √ | √ | 68 |
| 21 | 传动箱总成 3 | Drive Gearbox 3 | | | | | √ | √ | | √ | 78 |
| 22 | 爬行档总成 | Creeper | | | | | √ | √ | | √ | 88 |

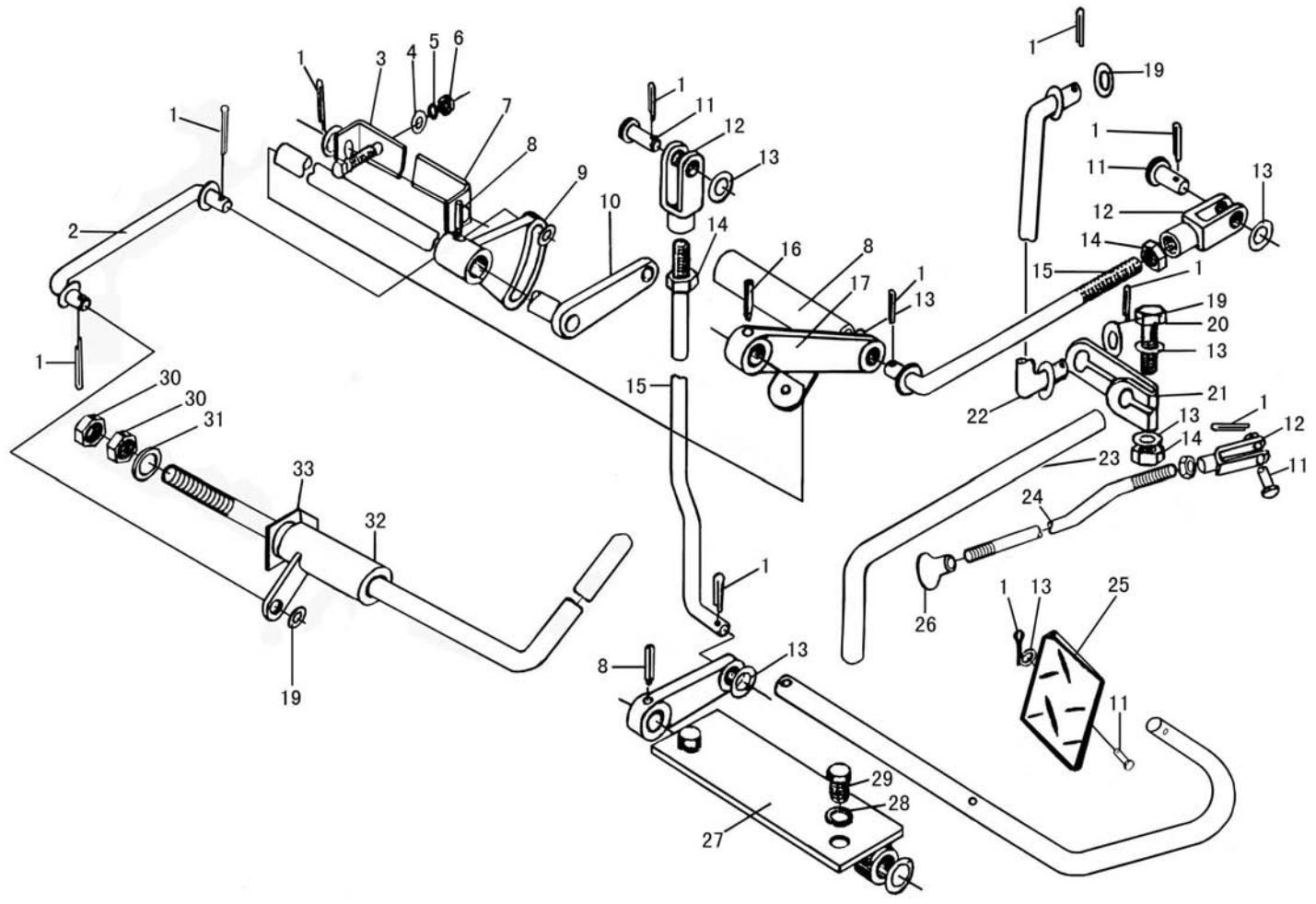


消声器总成
Exhaust System

消声器总成

Exhaust System

| 序号 Ser.No. | 代号 Part No | 名称 | Name | 数量 (QTY) | |
|---------------|---------------|----------|------------------|-----------------|---------------------|
| | | | | 180/220/250/254 | 250A/254A/300A/304A |
| 1 | Y385.10.012 | 消声器总成 | Muffler assembly | 1 | 1 |
| 2 | GB/T5783 | 螺栓 M8×25 | Bolt M8×25 | 4 | 4 |
| 3 | GB/T93 | 垫圈 8 | Washer 8 | 4 | 4 |
| 4 | GB/T97.1 | 垫圈 8 | Washer 8 | 4 | 4 |
| 5 | TY395.10.014 | 护罩连接板焊合件 | | 2 | 2 |
| 6 | Y385.10.119 | 消声器垫片 | Muffler washer | 1 | 1 |
| 7 | Y385.10.012 | 护罩支架焊合件 | | | 1 |
| | TY395.10.013 | 护罩连接板焊合件 | | 1 | |
| 8 | GB/T5783 | 螺栓 M6×10 | Bolt M6×10 | 6 | 6 |
| 9 | GB/T93 | 垫圈 6 | Washer 6 | 6 | 6 |
| 10 | GB/T97.1 | 垫圈 6 | Washer 6 | 6 | 6 |
| 11 | Y385.10.003 | 护罩总成 | | | 1 |
| | TY395.10.012 | 防护罩焊合件 | | 1 | |



发动机操纵机构总成 I
 Engine Control Mechanism I

发动机操纵机构总成 I

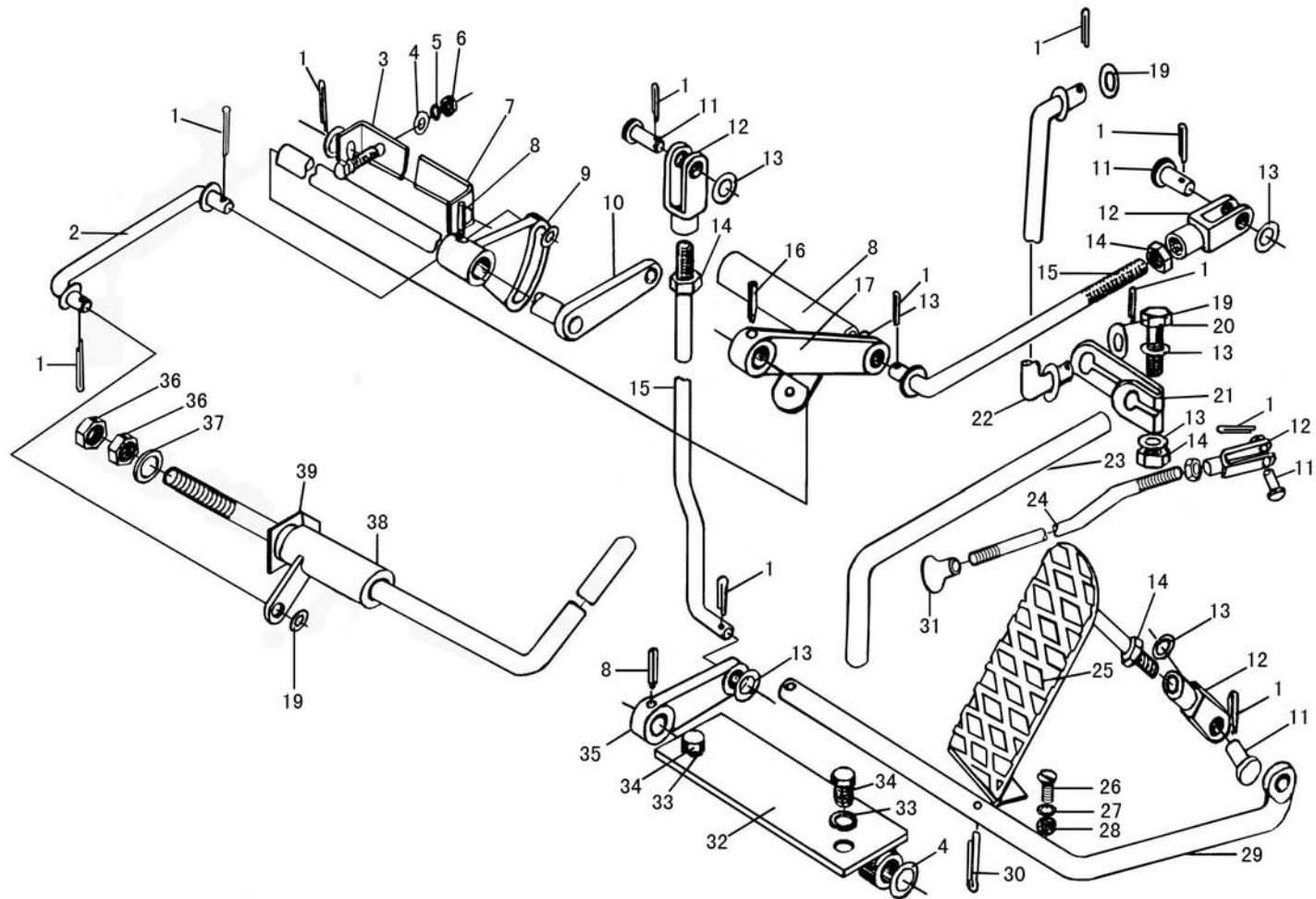
Engine Control Mechanism I

| 序号 Ser.No. | 代号 Part No | 名称 | Name | 数量 (QTY) |
|---------------|---------------|-----------|----------------|-------------|
| 1 | GB/T 91 | 销 2×20 | Pin 2×20 | 10 |
| 2 | 184.20.016 | 手油门拉杆焊合件 | Rod | 1 |
| 3 | GB/T 5783 | 螺栓 M10×25 | Bolt M10×25 | 2 |
| 4 | GB/T 97.1 | 垫圈 10 | Washer 10 | 6 |
| 5 | GB/T 93 | 垫圈 10 | Washer 10 | 2 |
| 6 | GB/T 6170 | 螺母 M10 | Nut M10 | 2 |
| 7 | 184.20.104-1 | 油门轴支承板 | Support plate | 1 |
| 8 | GB/T 879 | 销 3×20 | Pin 3×20 | 3 |
| 9 | 160.20.113 | 扇形板 | Sector arm | 1 |
| 10 | 184.20.012 | 传动轴焊合件 | Shaft | 1 |
| 11 | GB/T 882 | 销轴 B5×20 | Axis pin B5×20 | 4 |
| 12 | 160.20.101 | 联接叉 | Yoke | 4 |
| 13 | GB/T 97.1 | 垫圈 5 | Washer 5 | 4 |
| 14 | GB/T 6170 | 螺母 M6 | Nut M6 | 5 |
| 15 | 184.20.114 | 调节拉杆 | Adjusting rod | 1 |
| 16 | 180.20.010 | 熄火拉杆支承座 | Support seat | 1 |
| 17 | 160.20.102 | 左摇臂 | Left arm | 1 |
| 18 | 184.20.011 | 纵拉杆焊合件 | Rod | 1 |
| 19 | GB/T 97.1 | 垫圈 6 | Washer 6 | 8 |
| 20 | GB/T 5782 | 螺栓 M6×35 | Bolt M6×35 | 1 |
| 21 | 180.20.118-1 | 夹臂 | Clamping arm | 1 |

续.发动机操纵机构总成 I

Cont.Engine Control Mechanism I

| 序号 Ser.No. | 代号 Part No | 名称 | Name | 数量 (QTY) |
|---------------|---------------|----------|------------------------|-------------|
| 22 | 184.20.018 | 减压拉杆总成 | Decompression pull rod | 1 |
| 23 | 184.20.117-1 | 减压手柄 | Decompression handle | 1 |
| 24 | 180.20.105-1 | 熄火拉杆 | Shut down pull rod | 1 |
| 25 | 184.20.401 | 踏板 | Foot throttle pedal | 1 |
| 26 | 180.20.134 | 捏手 | Knob | 1 |
| 27 | 160.20.013 | 支承板焊合件 | Bracket | 2 |
| 28 | GB/T 93 | 垫圈 8 | Washer 8 | 2 |
| 29 | GB/T 5783 | 螺栓 M8×12 | Bolt M8×12 | 2 |
| 30 | GB/T 6170 | 螺母 M12 | Nut M12 | 2 |
| 31 | GB/T 93 | 垫圈 12 | Washer 12 | 1 |
| 32 | 250.20.013A | 手油门手柄焊合件 | Hand throttle | 1 |
| 33 | 184.20.107-2 | 垫圈 | Cushion plate | 1 |



发动机操纵机构总成 II
 Engine Control Mechanism II

发动机操纵机构总成 II

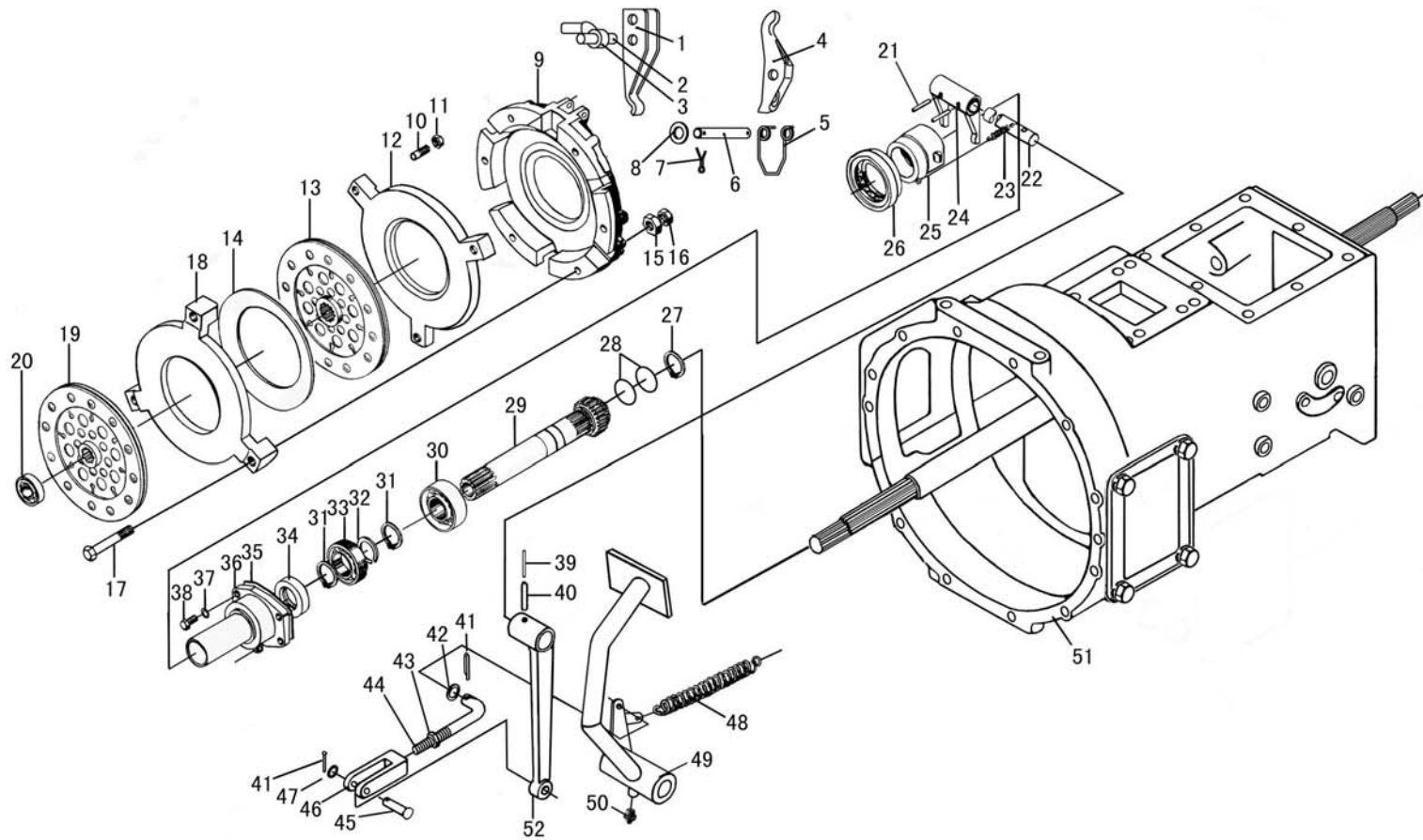
Engine Control Mechanism II

| 序号 Ser.No. | 代 号 Part No | 名 称 | Name | 数量 (QTY) |
|---------------|----------------|-----------|------------------------|-------------|
| 1 | GB/T 91 | 销 2×20 | Pin 2×20 | 10 |
| 2 | 184.20.016 | 手油门拉杆焊合件 | Rod | 1 |
| 3 | GB/T 5783 | 螺栓 M10×25 | Bolt M10×25 | 2 |
| 4 | GB/T 97.1 | 垫圈 10 | Washer 10 | 6 |
| 5 | GB/T 93 | 垫圈 10 | Washer 10 | 2 |
| 6 | GB/T 6170 | 螺母 M10 | Nut M10 | 2 |
| 7 | 184.20.104-1 | 油门轴支承板 | Support plate | 1 |
| 8 | GB/T 879 | 销 3×20 | Pin 3×20 | 3 |
| 9 | 160.20.113 | 扇形板 | Sector arm | 1 |
| 10 | 184.20.012 | 传动轴焊合件 | Shaft | 1 |
| 11 | GB/T 882 | 销轴 B5×20 | Axis pin B5×20 | 4 |
| 12 | 160.20.101 | 联接叉 | Yoke | 4 |
| 13 | GB/T 97.1 | 垫圈 5 | Washer 5 | 4 |
| 14 | GB/T 6170 | 螺母 M6 | Nut M6 | 5 |
| 15 | 184.20.114 | 调节拉杆 | Adjusting rod | 1 |
| 16 | 180.20.010 | 熄火拉杆支承座 | Support seat | 1 |
| 17 | 160.20.102 | 左摇臂 | Left arm | 1 |
| 18 | 184.20.011 | 纵拉杆焊合件 | Rod | 1 |
| 19 | GB/T 97.1 | 垫圈 6 | Washer 6 | 8 |
| 20 | GB/T 5782 | 螺栓 M6×35 | Bolt M6×35 | 1 |
| 21 | 180.20.118-1 | 夹臂 | Clamping arm | 1 |
| 22 | 184.20.018 | 减压拉杆总成 | Decompression pull rod | 1 |

续.发动机操纵机构总成 II

Cont.Engine Control Mechanism II

| 序号 Ser.No. | 代号 Part No | 名称 | Name | 数量 (QTY) |
|---------------|---------------|------------|----------------------|-------------|
| 23 | 184.20.117-1 | 减压手柄 | Decompression handle | 1 |
| 24 | 180.20.105-1 | 熄火拉杆 | Shut down pull rod | 1 |
| 25 | 160.20.014 | 脚油门焊合件 | Foot throttle pedal | 1 |
| 26 | GB/T 68 | 沉头螺钉 M4×16 | Screw M4×16 | 1 |
| 27 | GB/T 93 | 垫圈 4 | Washer 4 | 2 |
| 28 | GB/T 6170 | 螺母 M4 | Nut M4 | 2 |
| 29 | 160.20.115-1 | 脚油门传动轴 | Shaft | 2 |
| 30 | GB/T 91 | 销 3.2×26 | Pin 3.2×26 | 1 |
| 31 | 180.20.134 | 捏手 | Knob | 4 |
| 32 | 160.20.013 | 支承板焊合件 | Bracket | 1 |
| 33 | GB/T 93 | 垫圈 8 | Washer 8 | 1 |
| 34 | GB/T 5783 | 螺栓 M8×12 | Bolt M8×12 | 2 |
| 35 | 160.20.105 | 脚油门摇臂 | Foot throttle arm | 2 |
| 36 | GB/T 6170 | 螺母 M12 | Nut M12 | 1 |
| 37 | GB/T 93 | 垫圈 12 | Washer 12 | 2 |
| 38 | 250.20.013A | 手油门手柄焊合件 | Hand throttle | 1 |
| 39 | 184.20.107-2 | 垫圈 | Cushion plate | 1 |



离合器总成(八档爬壳八寸双作用)

Clutch

离合器总成(八档爬壳八寸双作用)

Clutch

| 序号 Ser.No. | 代号 Part No | 名称 | Name | 数量 (QTY) |
|---------------|---------------|--------------|---------------------------|-------------|
| 1 | FT250.21B.117 | 主离合器分离杠杆 | Main Release lever | 3 |
| 2 | 300.21.144 | 销轴 | Axis pin | 3 |
| 3 | FT250.21B.114 | 主离合器分离推杆 | Main Push rod | 3 |
| 4 | FT250.21B.118 | 副离合器分离杠杆 | Pressure Release lever | 3 |
| 5 | 250.21.122 | 离合器分离杠杆弹簧 | Spring | 6 |
| 6 | 300.21.145 | 长销 | Long Pin | 6 |
| 7 | GB/T91 | 销 3.2X20 | Pin 3.2X20 | 13 |
| 8 | GB/T848 | 垫圈 10-Zn.D | Washer 10-Zn.D | 13 |
| 9 | 250.21.130 | 离合器盖 | Cover | 1 |
| 10 | 250.21.129 | 主离合器调整螺钉 | Main Adjusting Bolt | 3 |
| 11 | GB/T6173 | 螺母 M10X1 | Nut M10×1 | 3 |
| 12 | 250.21.126 | 主离合器压盘 | Main pressure plate | 1 |
| 13 | YT250.21.017 | 主离合器从动盘总成 | Main clutch disc assy | 1 |
| 14 | FT250.21B.105 | 碟形弹簧 | Spring | 1 |
| 15 | 300.21.149 | 球头螺母 | Nut | 3 |
| 16 | GB/T6171 | 螺母 M8X1-Zn.D | Nut M8X1-Zn.D | 3 |
| 17 | FT400.21B.104 | 副离合器拉杆 | Pressure Pull rod | 3 |
| 18 | FT250.21B.112 | 副离合器压盘 | Pressure plate | 1 |
| 19 | YT250.21.014 | 副离合器从动盘总成 | Pressure clutch disc assy | 1 |
| 20 | GB/T278 | 滚动轴承 6203-Z | Bearing 6203-Z | 1 |
| 21 | GB/T 879 | 销 8×32 | Pin 8×32 | 2 |
| 22 | 184.21.132 | 离合器拨叉轴 | Fork shaft | 1 |

续.离合器总成

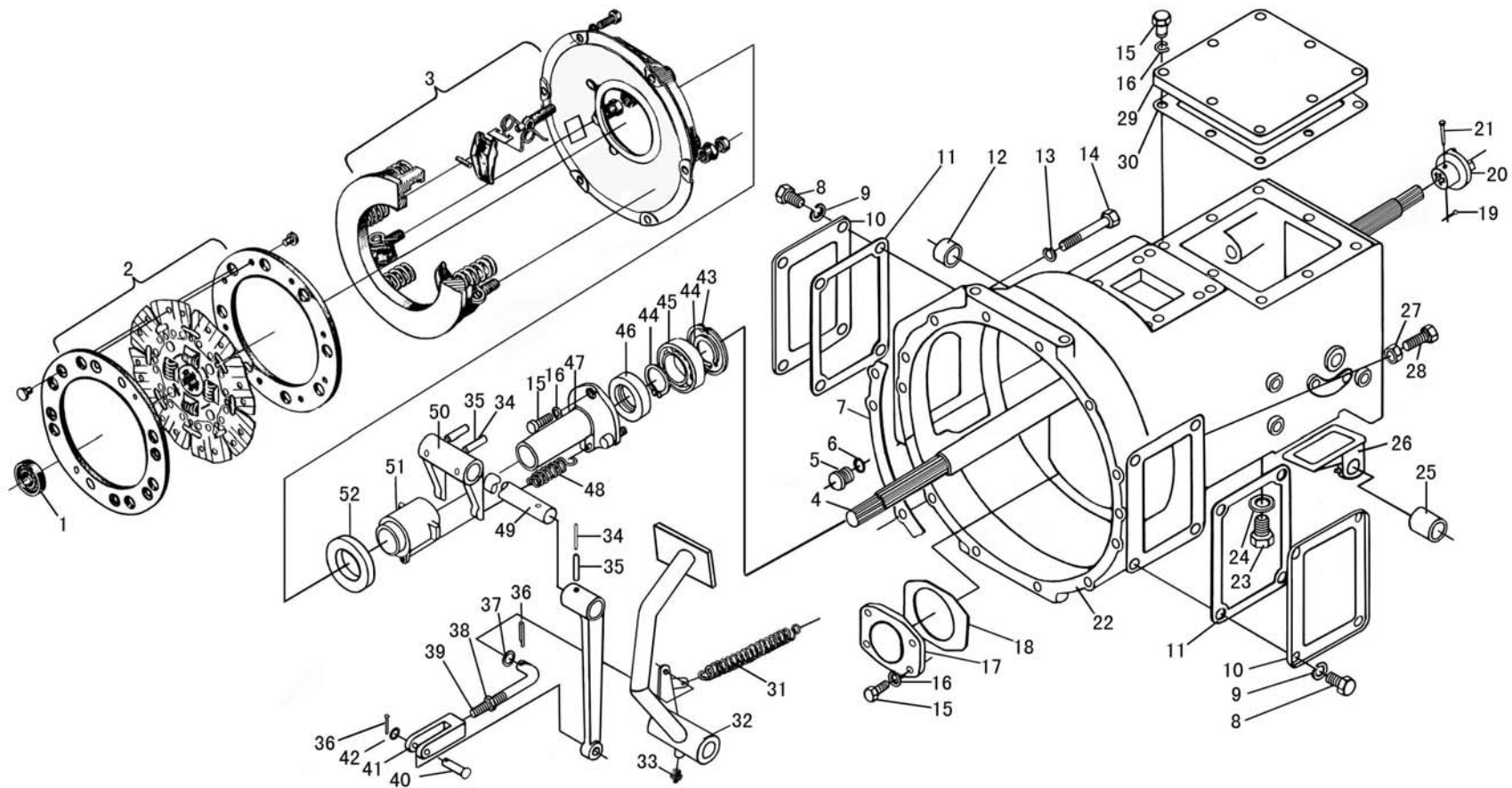
Cont.Clutch

| 序号 Ser.No. | 代号 Part No | 名称 | Name | 数量 (QTY) |
|---------------|-------------------|---------------------|----------------------|-------------|
| 23 | 160.21.109 | 分离轴承座弹簧 | Spring | 1 |
| 24 | 184.21S.108-1 | 离合器拨叉 | Fork | 1 |
| 25 | 184 II .21S.127-A | 分离轴承座 | Bearing seat | 1 |
| 26 | | 轴承 360111 | Bearing 360111 | 1 |
| 27 | GB/T894.1 | 挡圈 34 | Circlip 34 | 1 |
| 28 | GB3452.1 | O 型密封圈 19*2.65 | O-ring 19*2.65 | 2 |
| 29 | 184 II .21S.109 | 主离合器轴 | Clutch shaft | 1 |
| 30 | GB/T276 | 滚动轴承 6207 | Rolling bearing 6207 | 1 |
| 31 | GB/T894.1 | 挡圈 35 | Circlip 35 | 2 |
| 32 | GB/T893.1 | 挡圈 62 | Circlip 62 | 1 |
| 33 | GB/T276 | 滚动轴承 6007 | Rolling bearing 6007 | 1 |
| 34 | GB/Y9877.1 | 旋转轴唇形密封圈 FB35*55*12 | Oil seal | 1 |
| 35 | 184.21S.106 | 轴承盖纸垫 | Gasket | 1 |
| 36 | 184 II .21S.107 | 分离轴承座支架 | Support | 1 |
| 37 | GB/T 93 | 垫圈 8 | Washer 8 | 4 |
| 38 | GB/T 5783 | 螺栓 M8×18 | Bolt M8×18 | 4 |
| 39 | GB/T879 | 销 5*32 | Pin 5×32 | 1 |
| 40 | GB/T879 | 销 8*32 | Pin 8×32 | 1 |
| 41 | GB/T91 | 销 2.5*20 | pin 2.5×20 | 2 |
| 42 | GB/T97.1 | 垫圈 10 | Washer10 | 1 |
| 43 | GB/T6170 | 螺母 M10 | Nut M10 | 1 |

续.离合器总成

Cont.Clutch

| 序号 Ser.No. | 代号 Part No | 名称 | Name | 数量 (QTY) |
|---------------|-----------------|----------|-----------------|-------------|
| 44 | 184 II.21S.102 | 离合器推杆 | Push rod | 1 |
| 45 | GB/T882 | 销轴 B8*30 | Axis pin B10×30 | 1 |
| 46 | 160.21.107 | 离合器推杆调整叉 | Fork | 1 |
| 47 | GB/T97.1 | 垫圈 8 | Washer 8 | 1 |
| 48 | 160.21.105-2 | 离合器踏板弹簧 | Spring | 1 |
| 49 | 254YZ.21S.011-3 | 离合器踏板焊合件 | Pedal of clutch | 1 |
| 50 | GB/T1152 | 油杯 M10*1 | Grease M10×1 | 1 |
| 51 | 250.37.315A | 爬行档壳体 | | 1 |
| 52 | 184.21S.101 | 离合器分离摇臂 | Release Arm | 1 |



离合器总成(八档爬壳九寸单作用)

Clutch

离合器总成(八档爬壳九寸单作用)

Clutch

| 序号 Ser.No. | 代号 Part No | 名称 | Name | 数量 (QTY) |
|---------------|---------------|-----------------|------------------------|-------------|
| 1 | GB/T278 | 滚动轴承 6203-Z | Rolling bearing 6203-Z | 1 |
| 2 | JY250.21.011 | 离合器从动盘总成 | Clutch disc assy | 1 |
| 3 | 300.21.012 | 离合器分装总成 | Part clutch assy | 1 |
| 4 | 254 I .21.202 | 离合器轴 | Clutch shaft | 1 |
| 5 | 254 I .37.163 | 堵塞 | Plug | 1 |
| 6 | GB3452.1 | O 形密封圈 9.5×2.65 | O-ring 9.5×2.65 | 1 |
| 7 | 160.21.110 | 纸垫 | Gasket | 1 |
| 8 | GB/T5783 | 螺栓 M14×25 | Bolt M14×25 | 8 |
| 9 | GB/T93 | 垫圈 14 | Washer 14 | 8 |
| 10 | 184.37.314 | 窗口盖板 | Cover plate | 2 |
| 11 | 184.37.350 | 纸垫 | Gasket | 2 |
| 12 | 160.21.119 | 离合器拨叉轴右衬套 | Right bush | 1 |
| 13 | GB/T93 | 垫圈 10 | Washer 10 | 11 |
| 14 | GB/T5782 | 螺栓 M10×75 | Bolt M10×75 | 11 |
| 15 | GB/T5783 | 螺栓 M8×20 | Bolt M8×20 | 15 |
| 16 | GB/T93 | 垫圈 8 | Washer 8 | 15 |
| 17 | 184.37.309-1 | 固定齿轮轴轴承盖 | Bearing cover | 1 |
| 18 | 184.37.307 | 轴承盖纸垫 | Gasket | 1 |
| 19 | GB/T91 | 销 2×12 | Split pin 2×12 | 1 |
| 20 | 254 I .21.143 | 主动联轴节 | Driving coupling | 1 |
| 21 | 300.21.146 | 联轴节销 | Coupling pin | 1 |

续.离合器总成

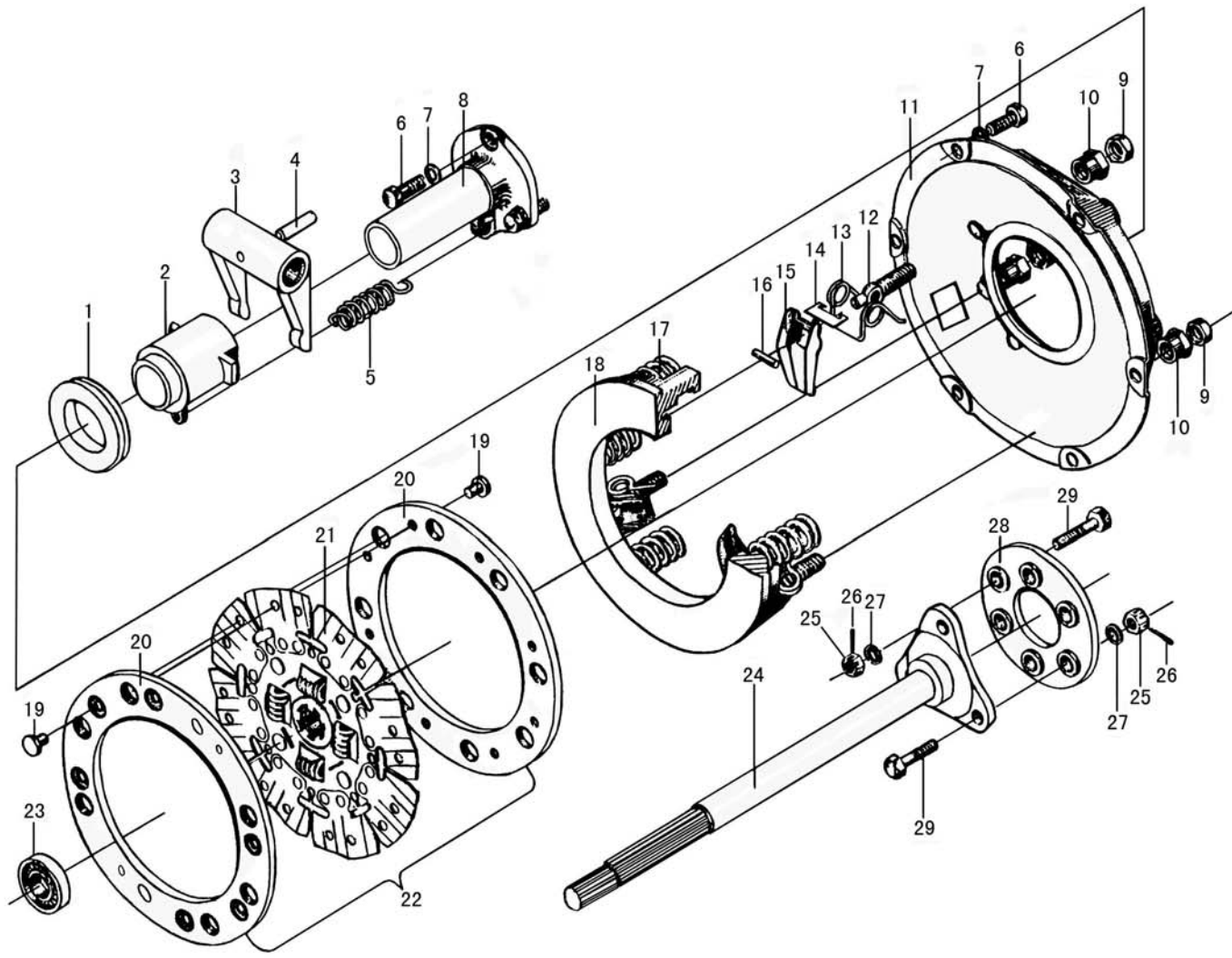
Cont.Clutch

| 序号 Ser.No. | 代 号 Part No | 名 称 | Name | 数量 (QTY) |
|---------------|-----------------|---------------|-----------------|-------------|
| 22 | 250.37.315A-1 | 爬行档壳体 | Housing | 1 |
| 23 | GB/T5786 | 螺栓 M16×1.5×18 | Bolt M16×1.5×18 | 1 |
| 24 | 12.37.146 | 垫圈 | Washer | 1 |
| 25 | 160.21.120 | 离合器拨叉轴左衬套 | Left bush | 1 |
| 26 | 180S.37.031 | 下盖板总成 | Down cover | 1 |
| 27 | GB/T5783 | 螺栓 M10×25 | Bolt M10×25 | 1 |
| 28 | GB/T6172 | 螺母 M10 | Nut M10 | 1 |
| 29 | 254 I .37.323 | 上盖板 | Cover | 1 |
| 30 | 184.37.325 | 上盖板纸垫 | Gasket | 1 |
| 31 | 160.21.105-2 | 离合器踏板弹簧(长 94) | Spring(L94) | 1 |
| 32 | X300.21.011-1 | 离合器踏板焊合件 | Pedal | 1 |
| 33 | GB/T1152 | 油杯 M10×1 | Grease M10×1 | 1 |
| 34 | GB/T879 | 销 8×32 | Pin 8×32 | 3 |
| 35 | GB/T879 | 销 5×32 | Pin 5×32 | 3 |
| 36 | GB/T91 | 销 2.5×20 | Pin 2.5×20 | 2 |
| 37 | GB/T97.1 | 垫圈 10 | Washer 10 | 1 |
| 38 | GB/T6170 | 螺母 M10 | Nut M10 | 1 |
| 39 | 184 II .21S.102 | 离合器推杆 | Push rod | 1 |
| 40 | GB/T882 | 销轴 B8×30 | Axis pin B8×30 | 1 |
| 41 | 160.21.107 | 离合器推杆调整叉 | Adjusting fork | 1 |
| 42 | GB/T97.1 | 垫圈 8 | Washer 8 | 1 |

续.离合器总成

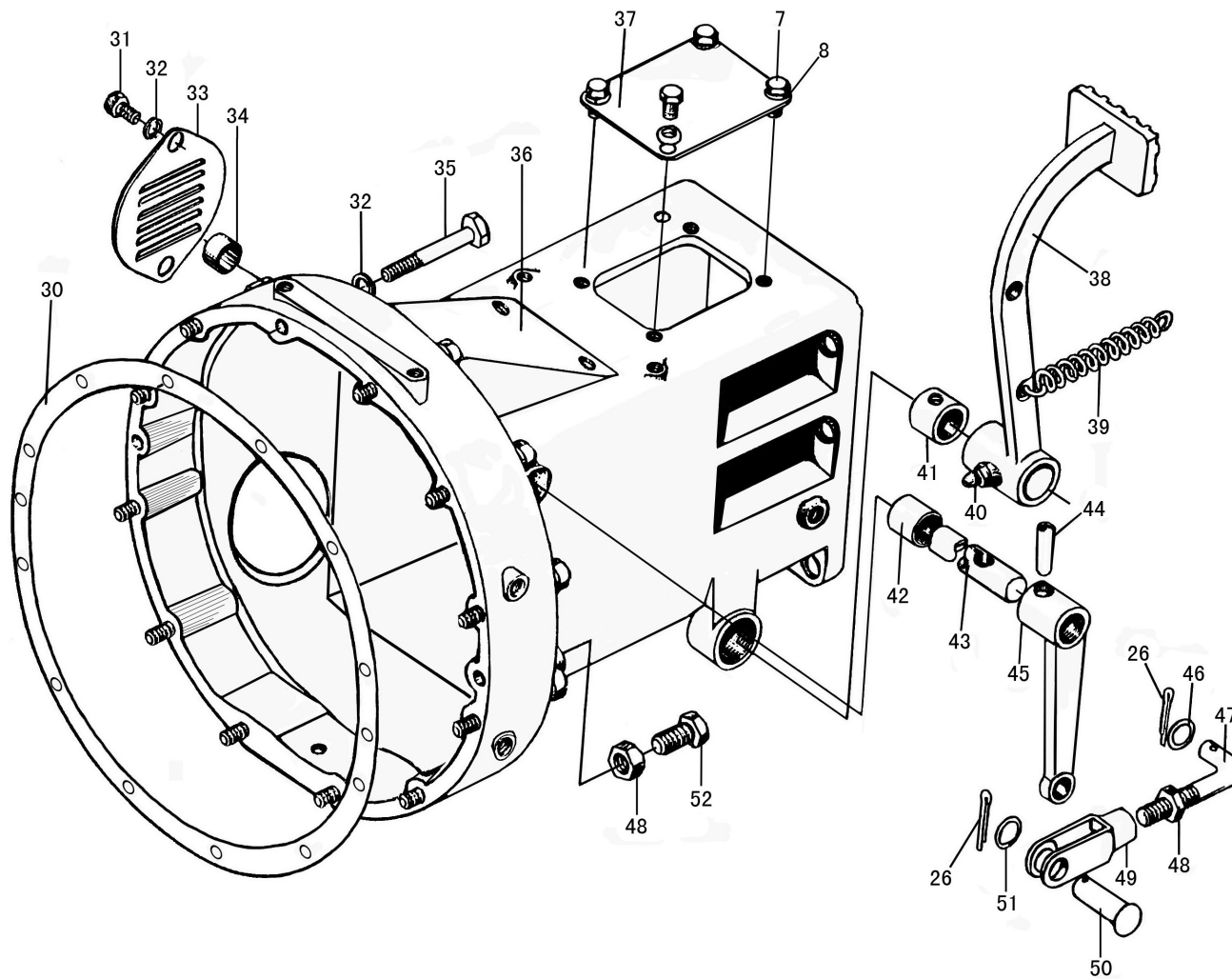
Cont.Clutch

| 序号 Ser.No. | 代 号 Part No | 名 称 | Name | 数量 (QTY) |
|---------------|----------------|---------------------|----------------------|-------------|
| 43 | GB/T893.1 | 挡圈 62 | Circlip 62 | 1 |
| 44 | GB/T894.1 | 挡圈 35 | Circlip 35 | 2 |
| 45 | GB/T276 | 滚动轴承 6007 | Rolling bearing 6007 | 1 |
| 46 | GB/T9877.1 | 旋转轴唇形密封圈 FB35×55×12 | Oil seal FB35×55×12 | 1 |
| 47 | 254 I .21.107 | 分离轴承座支架 | Bracket | 1 |
| 48 | 160.21.109 | 分离轴承座弹簧 | Spring | 1 |
| 49 | 184.21S.132 | 离合器拨叉轴 | York shaft | 1 |
| 50 | 184.21S.108-1 | 离合器拨叉 | York | 1 |
| 51 | 254 I .21.134 | 分离轴承座 | Bearing seat | 1 |
| 52 | D18-688808 | 轴承 688808 | Bearing 688808 | 1 |



离合器总成(九寸单作用短车身)

Clutch



续图. 离合器总成(九寸单作用短车身)

Clutch

离合器总成(九寸单作用短车身)

Clutch

| 序号 Ser.No. | 代号 Part No | 名称 | Name | 数量 (QTY) |
|---------------|----------------|--------------|------------------------|-------------|
| 1 | | 轴承 688908 | Bearing 688908 | 1 |
| 2 | 160.21.134-1 | 分离轴承座 | Release bearing holder | 1 |
| 3 | 160.21.101 | 离合器拨叉 | Fork | 1 |
| 4 | GB/T 879 | 销 8×32 | Pin 8×32 | 2 |
| 5 | 160.21.109 | 分离轴承座弹簧 | Spring | 1 |
| 6 | GB/T 5783 | 螺栓 M8×18 | Bolt M8×18 | 13 |
| 7 | GB/T 93 | 垫圈 8 | Washer 8 | 13 |
| 8 | 160.21.103 | 分离轴承座支架 | Support | 1 |
| 9 | GB/T 6173 | 六角薄螺母 M8×1 | Nut M8×1 | 3 |
| 10 | 160.21.126 | 离合器分离拉杆调整螺母 | Adjusting nut | 3 |
| 11 | 300.21.117 | 离合器盖 | Cover | 1 |
| 12 | 300.21.123 | 分离杠杆调整螺栓 | Release rod | 3 |
| 13 | 300.21.122-1 | 离合器分离杠杆弹簧 | Spring | 3 |
| 14 | 300.21.121 | 离合器分离杠杆卡铁 | Clip | 3 |
| 15 | 160.21.128 | 离合器分离杠杆 | Release lever | 3 |
| 16 | GB/T 119 | 销 B6×25 | Pin B6×25 | 3 |
| 17 | 300.21.119 | 离合器压紧弹簧 | Spring | 6 |
| 18 | 300.21.118 | 离合器压盘 | Pressure plate | 1 |
| 22 | JY250.21.011 | 功率输出离合器从动盘总成 | Driven disk | 1 |
| 23 | GB/T 276 | 轴承 6203-Z | Bearing 6203-Z | 1 |
| 24 | 160.21.023-3 | 离合器轴焊接总成 | Clutch shaft | 1 |
| | JY250.21.023-2 | 离合器轴焊接总成 | Clutch shaft | 1 |

续.离合器总成

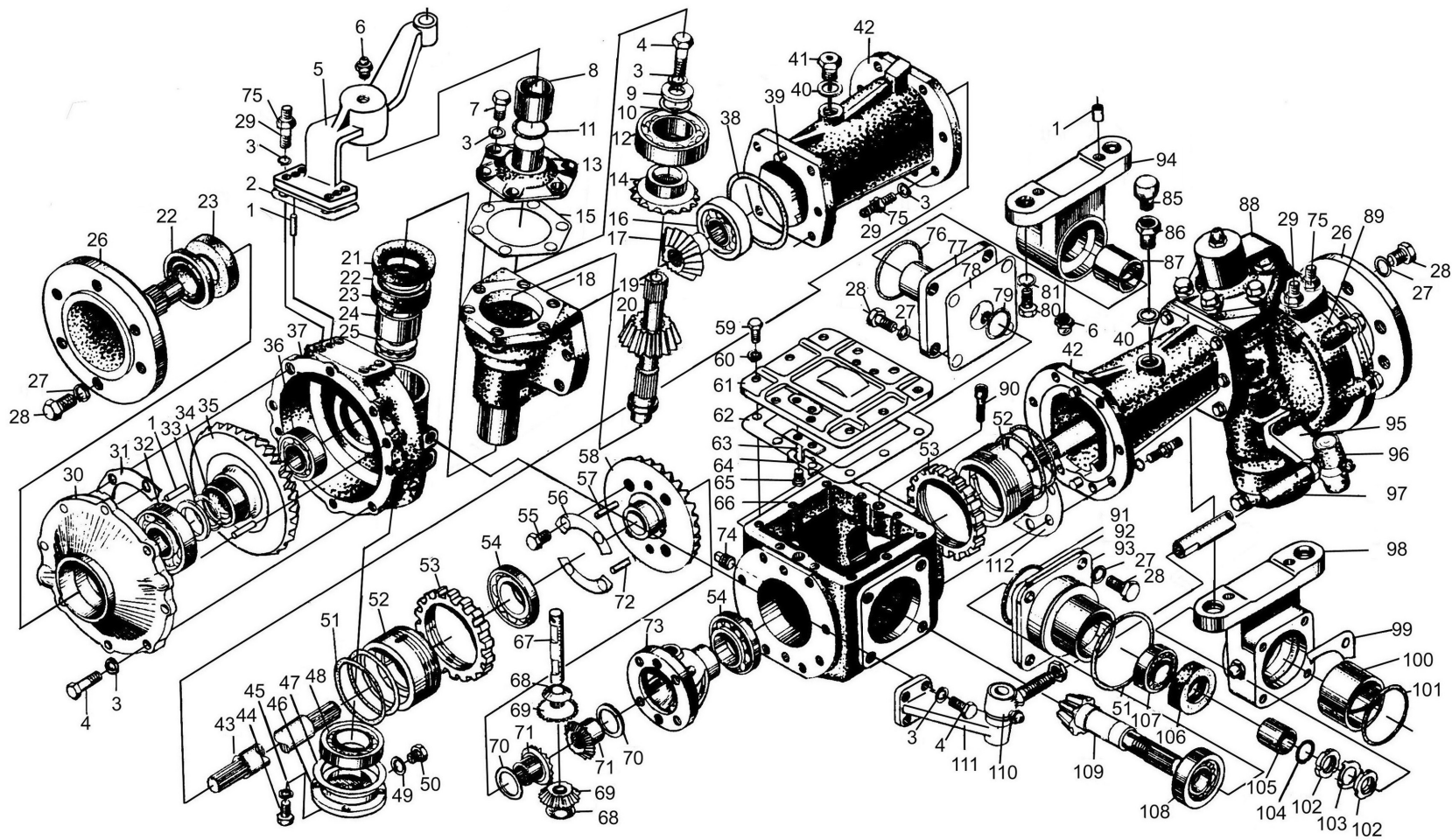
Cont.Clutch

| 序号 Ser.No. | 代 号 Part No | 名 称 | Name | 数量 (QTY) |
|---------------|----------------|-----------|----------------|-------------|
| 25 | GB/T 6181 | 螺母 M10 | Nut M10 | 6 |
| 26 | GB/T 91 | 销 2.5×20 | Pin 2.5×20 | 8 |
| 27 | GB/T 96 | 垫圈 10 | Washer 10 | 6 |
| 28 | 160.21.204-1 | 联轴节 | Coupling joint | 1 |
| 29 | GB/T 5783 | 螺栓 M10×35 | Bolt M10×35 | 6 |
| 30 | 180.21.110 | 离合器壳纸垫 | Gasket | 1 |
| 31 | GB/T 5783 | 螺栓 M10×12 | Bolt M10×12 | 2 |
| 32 | GB/T 93 | 垫圈 10 | Washer 10 | 14 |
| 33 | 160.21.111 | 检查孔盖 | Cover | 1 |
| 34 | 160.21.119 | 离合器拨叉轴右衬套 | Right bush | 1 |
| 35 | GB/T 5782 | 螺栓 M10×85 | Bolt M10×85 | 12 |
| 36 | 180.21.201-1 | 离合器壳 | Clutch case | 1 |
| 37 | 160.21.205 | 盖板 | Cover | 1 |
| 38 | 160.21.020-3 | 离合器踏板总成 | Clutch pedal | 1 |
| 39 | 160.21.105-2 | 离合器踏板弹簧 | Spring | 1 |
| 40 | GB/T 1152 | 油杯 M10×1 | Grease M10×1 | 3 |
| 41 | 160.21.118 | 离合器踏板轴衬套 | Bush | 2 |
| 42 | 160.21.120 | 离合器拨叉轴左衬套 | Left bush | 1 |
| 43 | 160.21.102 | 离合器拨叉轴 | Shaft | 1 |
| 44 | GB/T 879 | 销 8×32 | Pin 8×32 | 2 |
| 45 | JY250.21.101-1 | 离合器分离摇臂 | Release rod | 1 |

续.离合器总成

Cont.Clutch

| 序号 Ser.No. | 代号 Part No | 名称 | Name | 数量 (QTY) |
|---------------|----------------|-----------|----------------|-------------|
| 46 | GB/T 97.1 | 垫圈 10 | Washer 10 | 1 |
| 47 | 184 II.21S.102 | 离合器推杆 | Push rod | 1 |
| 48 | GB/T 6172 | 螺母 M10 | Nut M10 | 2 |
| 49 | 160.21.107 | 离合器推杆调整叉 | Yoke | 1 |
| 50 | GB/T 882 | 销轴 B8×28 | Axis pin B8×28 | 1 |
| 51 | GB/T 97.1 | 垫圈 8 | Washer 8 | 1 |
| 52 | GB/T 5783 | 螺栓 M10×40 | Bolt M10×25 | 1 |



前驱动桥总成
Front Axle

前驱动桥总成

Front Axle

| 序号 Ser.No. | 代号 Part No | 名称 | Name | 数量 (QTY) |
|---------------|----------------|-----------------|------------------------|-------------|
| 1 | GB/T119 | 销 B8×20 | Pin B8×20 | 12 |
| 2 | 184.31.110 | 调整垫片 | Gasket | 按需要 |
| 3 | GB/T93 | 垫圈 10 | Washer 10 | 78 |
| 4 | GB/T5783 | 螺栓 M10×30 | Bolt M10×30 | 38 |
| 5 | 254YZ.31.160-1 | 左转向臂 | Left steering knuckle | 1 |
| 6 | GB/T1152 | 油杯 M10×1 | Grease M10×1 | 8 |
| 7 | GB/T5783 | 螺栓 M10×25 | Bolt M10×25 | 12 |
| 8 | 184.31.161 | 联接转向臂衬套 | Bush | 2 |
| 9 | 184.31.117 | 立轴挡圈 | Washer | 2 |
| 10 | 184.31.116 | 立轴调整垫片 | Adjusting shim | 按需要 |
| 11 | GB3452.1 | O形密封圈 34.5×3.55 | O-ring 34.5×3.55 | 2 |
| 12 | GB/T276 | 滚动轴承 6010 | Rolling bearing 6010 | 2 |
| 13 | 184.31.114 | 上轴承盖 | Upper bearing cover | 2 |
| 14 | 184.31.115 | 中间传动被动齿轮 | Driven gear | 2 |
| 15 | 184.31.113 | 上轴承盖垫片 | Gasket | 2 |
| 16 | GB/T276 | 滚动轴承 6207 | Rolling bearing 6207 | 2 |
| 17 | 184.31.119 | 中间传动主动齿轮 | Driving gear | 2 |
| 18 | 184.31.112 | 立轴套管 | Standing shaft housing | 2 |
| 19 | 184.31.111-1 | 立轴 | Standing shaft | 2 |
| 20 | 184.31.102 | 末减速主动齿轮 | Driving gear | 2 |
| 21 | 184.31.108 | 毛毡圈 | Felt washer | 2 |

续. 前驱动桥总成

Cont Front Axle

| 序号 Ser.No. | 代号 Part No | 名称 | Name | 数量 (QTY) |
|---------------|---------------|---------------------|-----------------------------------|-------------|
| 22 | GB/T9877.1 | 旋转唇形密封圈 FB50×72×7 | Oil seal FB50×72×7 | 4 |
| 23 | GB/T9877.1 | 旋转唇形密封圈 FB50×72×12 | Oil seal FB50×72×12 | 4 |
| 24 | 184.31.150 | 边减速壳体衬套 | Bush | 2 |
| 25 | GB/T301 | 推力轴承 51106 | Pushing bearing 51106 | 2 |
| 26 | 184.31.104 | 驱动轴 | Driving shaft | 2 |
| 27 | GB/T93 | 垫圈 12 | Washer 12 | 46 |
| 28 | GB/T5783 | 螺栓 M12×30 | Bolt M12×30 | 24 |
| 29 | GB/T899 | 螺柱 AM10-M10×1.25×28 | Stud AM10-M10×1.25×28 | 36 |
| 30 | 184.31.107 | 驱动轴盖 | Driving shaft cover | 2 |
| 31 | 184.31.109 | 驱动轴盖垫片 | Gasket | 按需要 |
| 32 | GB/T276 | 滚动轴承 NUP307E | Bearing NUP307E | 2 |
| 33 | 184.31.105 | 驱动轴垫圈 | Washer | 按需要 |
| 34 | 184.31.106 | 驱动轴固定圈 | Driving shaft washer | 4 |
| 35 | 184.31.103 | 末减速被动齿轮 | Driven gear | 2 |
| 36 | GB/T276 | 滚动轴承 NUP206E | Bearing NUP206E | 2 |
| 37 | 184.31.151-1 | 左边减速壳体 | Left side housing | 1 |
| 38 | GB3452.1 | O形密封圈 75×3.55 | O-ring 75×3.55 | 2 |
| 39 | GB/T119 | 销 B10×22 | Pin B10×22 | 8 |
| 40 | 12.37.146 | 垫圈 | Washer | 2 |
| 41 | 184.31.030 | 前桥量油尺 | Dipstick | 1 |
| 42 | 254.31.101-A | 半轴套管(长 257.5) | Differential axle housing(L257.5) | 2 |

续. 前驱动桥总成

Cont. Front Axle

| 序号 Ser.No. | 代号 Part No | 名称 | Name | 数量 (QTY) |
|---------------|-----------------|------------------|-----------------------------------|-------------|
| | 254 I .31.101-1 | 半轴套管(长 357.5) | Differential axle housing(L357.5) | 2 |
| 43 | 254.31.102 | 半轴(长 370) | Differential axle(L370) | 2 |
| | 254 I .31.102 | 半轴(长 468) | Differential axle(L468) | 2 |
| 44 | GB/T5783 | 螺栓 M6×20 | Bolt M6×20 | 8 |
| 45 | GB/T93 | 垫圈 6 | Washer 6 | 8 |
| 46 | 184.31.101 | 轴承盖 | Bearing cover | 2 |
| 47 | 184.31.136 | 边减速壳端纸垫 | Gasket | 2 |
| 48 | GB/T276 | 滚动轴承 6305 | Rolling bearing 6305 | 2 |
| 49 | GB/T848 | 垫圈 10 | Washer 10 | 2 |
| 50 | ZBT32001 | 螺塞 II -K1/8 | Bolt II -K1/8 | 2 |
| 51 | GB3452.1 | O 形密封圈 82.5×3.55 | O-ring 82.5×3.55 | 2 |
| 52 | 184.31.138-2 | 轴承座 | Bearing seat | 2 |
| 53 | 184.31.139 | 调整螺母 | Adjusting nut | 2 |
| 54 | GB/T297 | 滚动轴承 32009 | Rolling bearing 32009 | 2 |
| 55 | GB/T5783 | 螺栓 M8×25 | Bolt M8×25 | 4 |
| 56 | 184.31.186 | 被动圆锥齿轮锁紧片 | Lock leaf | 2 |
| 57 | GB/T120 | 销 B8×35 | Pin B8×35 | 1 |
| 58 | 184.31.185 | 被动圆锥齿轮 | Driven bevel gear | 1 |
| 59 | GB/T5783 | 螺栓 M8×20 | Bolt M8×20 | 10 |
| 60 | GB/T93 | 垫圈 8 | Washer 8 | 10 |
| 61 | 184.31.260 | 主传动壳体上盖板 | Upper cover | 1 |