

DIGITAL PRESSURE SWITCHES

Type CFE

SAGInoMIYA

GENERAL DESCRIPTION

- All functions can be set by 3 push button switches.
- Independent ON/OFF setting.
- ON Delay Timer function.
- Pressure calibration

CE mark applicable (available upon request)



TYPE NUMBER SELECTION (SPECIFICATIONS)

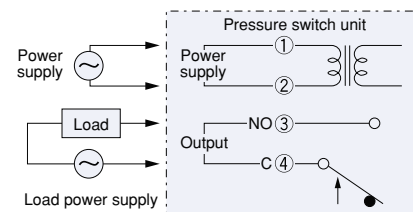
Unit: MPa

Catalog No.	Setting/Indication Range		Setting resolution	Calibration range	Airtight Pressure	Wt. (kg)
	Min.	Max.				
CFE-SC10B-001	-0.095	0.995	0.005	±0.03	3.85	0.3
CFE-SC35B-001	0	3.5	0.02	±0.12	5.5	
CFE-SC50B-001	0	5.0	0.02	±0.15	38.5 bar	
CFE-SC10B-101	-0.95 bar	9.95 bar	0.05 bar	±0.3 bar	55 bar	
CFE-SC35B-102	0 bar	35 bar	0.2 bar	±1.2 bar		
CFE-SC50B-102	0 bar	50 bar	0.2 bar	±1.5 bar		

COMMON SPECIFICATIONS

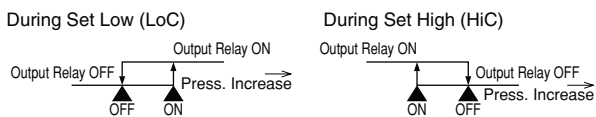
Supply voltage: 230V. AC±10% 50/60Hz
 Output contact rating: 125/250V. AC 1A(cos φ =1) SPST
 On delay timer: 0 to 240 sec (step=1sec.)
 Ambient temp. range: -10 to 60°C
 Storage temperature range: -20 to 70°C
 Fluid: Refrigerants (excluding ammonia), water, air.
 Pressure connection: 1/4" male flare
 Enclosure: IPX2

WIRING

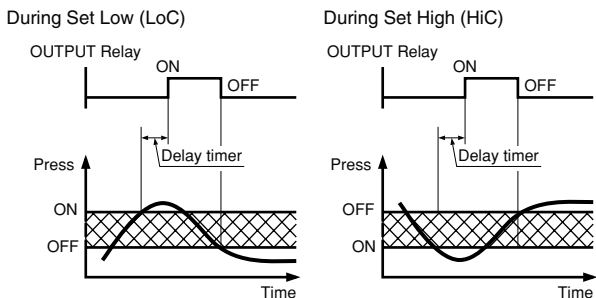


OPERATION

OPERATION PATTERN



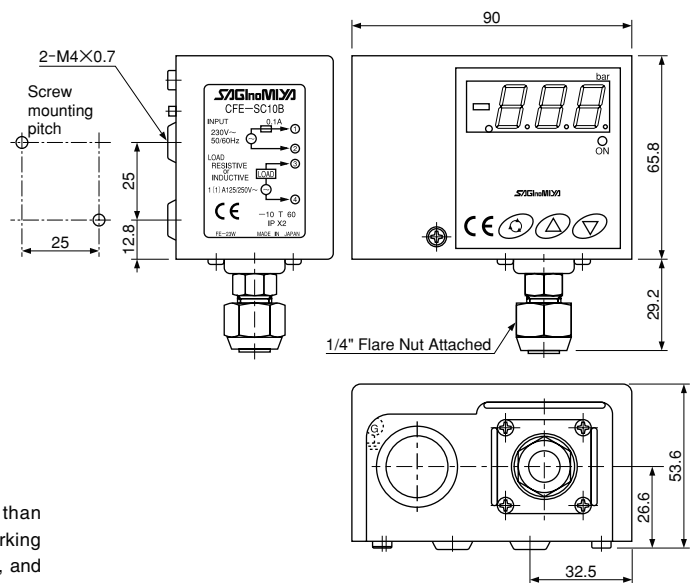
DELAY TIMER OPERATION PATTERN



* In case pressure decrease than the ON pressure during working of Delay timer, timer is reset, and dose not turn on.

* In case pressure increase than the ON pressure during working of Delay timer, timer is reset, and dose not turn on.

DIMENSIONS



Unit: mm