

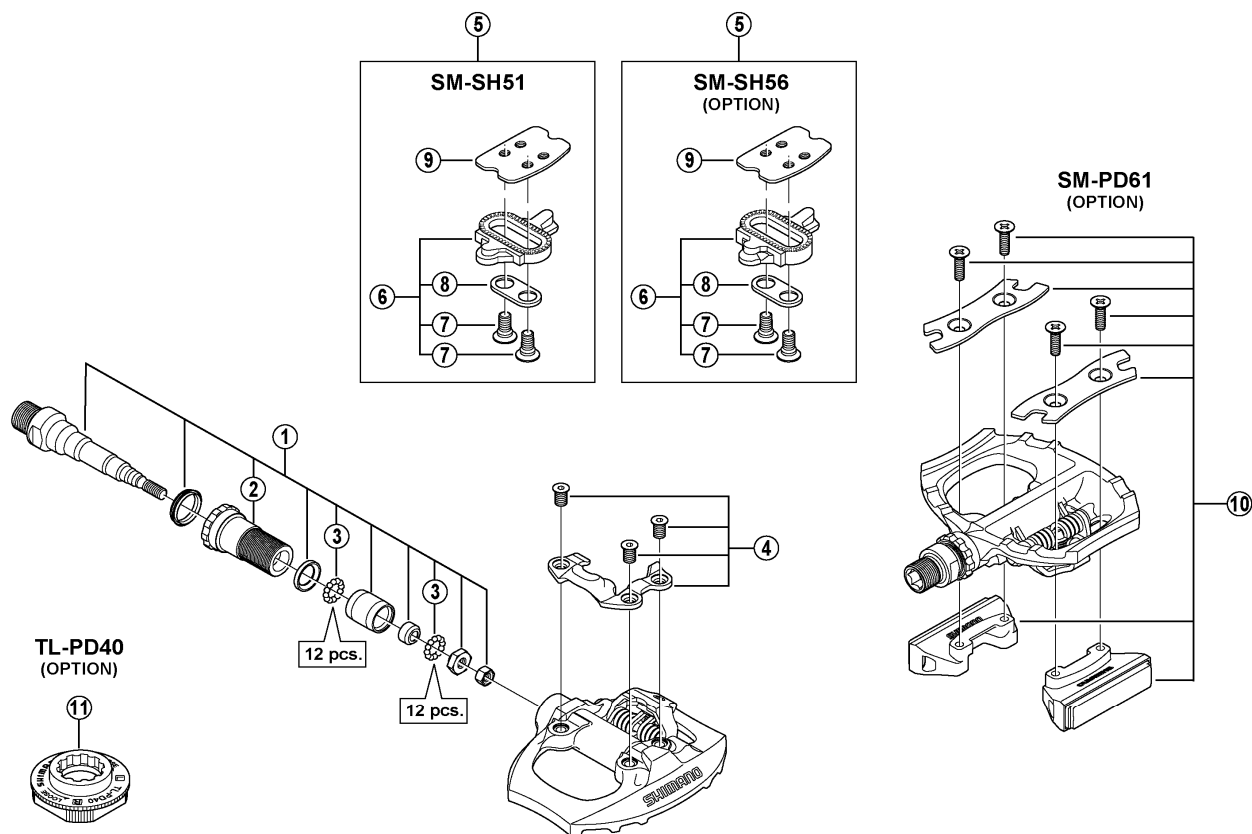
SPD Pedals

**PD-A530**

Silver Version

**PD-A530-L**

Black Version



ITEM NO.	SHIMANO CODE NO.	DESCRIPTION	INTERCHANGEABILITY
* 1	<b>Y45R98030</b>	Pedal Axle Assembly (Right / B.C.9/16" x 20T.P.I.)	
	<b>Y45R98020</b>	Pedal Axle Assembly (Left / B.C.9/16" x 20T.P.I.)	
2	<b>Y43Z13100</b>	Lock Bolt (Right)	A
	<b>Y43Z14100</b>	Lock Bolt (Left)	A
3	<b>Y41N98030</b>	Steel Ball (3/32") 62 pcs.	A
4	<b>Y41S98050</b>	Body Cover (Right) & Fixing Bolts	A
	<b>Y41S98060</b>	Body Cover (Left) & Fixing Bolts	A
5	<b>Y42498200</b>	SM-SH51 Cleat Set (Single Release Mode / Pair)	A
	<b>Y41S98090</b>	SM-SH56 Cleat Set (Multiple Release Mode / Pair)	A
6	<b>Y42498201</b>	SM-SH51 Cleat Set w/o Cleat Nut (Single Release Mode / Pair)	A
	<b>Y41S98100</b>	SM-SH56 Cleat Set w/o Cleat Nut (Multiple Release Mode / Pair)	A
7	<b>Y41704030</b>	Cleat Fixing Bolt (1 pc.)	A
8	<b>Y42423000</b>	Cleat Adapter (1 pc.)	A
9	<b>Y40N01000</b>	Cleat Nut (1 pc.)	A
10	<b>Y45Z98010</b>	SM-PD61 Reflector Unit (Pair)	
	<b>Y45Z98020</b>	SM-PD61 Reflector Unit (AS/Pair)	
11	<b>Y42A09000</b>	TL-PD40 Special Tool	A

A: Same parts.

B: Parts are usable, but differ in materials, appearance, finish, size, etc.

Absence of mark indicates non-interchangeability.

Mar.-2013-2743A

© Shimano Inc. A

Specifications are subject to change without notice.

**SHIMANO**