



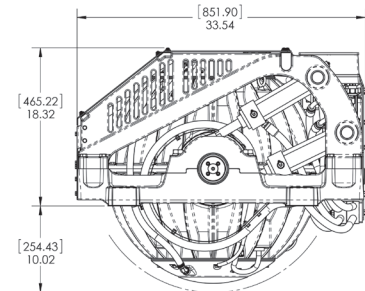
The Seakeeper 9 is designed to achieve 70 to 90% roll reduction on boats up to 35 tons. Two units can be fitted for larger boats. The Seakeeper 9 requires only modest electrical power, has no outside appendages, and can be installed off centerline, if necessary. Its computerized control and vacuum technology make it the first truly practical, and only modern, anti-roll gyro.

SPECIFICATIONS

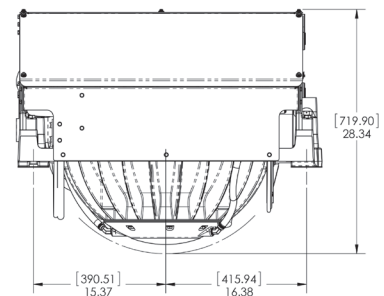
Rated RPM	9,000 RPM
Angular Momentum at Rated RPM	9,000 N-M-S
Anti-Rolling Torque at Rated RPM	18,810 N-M
Spool-up Time to Rated RPM	50 minutes (9,000 RPM)
Spool-up Time to Stabilization	35 minutes (8,000 RPM)
Spool-up Power	
AC Motor	3000 Watts Max
DC Control	240 Watts
Operating Power	
AC Motor (sea state dependent):	1500-2000 Watts
DC Control:	240 Watts
AC Input Voltage:	208-230 VAC (+/- 10%), 50/60 Hz, Single Phase
DC Input Voltage:	24 VDC @ 10 Amps
Sea Water Supply to Heat Exchanger	30 LPM (8 GPM) maximum 15 LPM (4 GPM) minimum
Ambient Air Temperature	0°-60° C (32°-140° F)
Weight	550 kg (1210 lbs) bolt-in installation
Envelope Dimensions	Length x Width x Height 0.852 L x 0.903 W x 0.720 H (meters) 33.5 L x 35.6 W x 28.3 H (inches)
Noise Output	Steady state noise measured in the factory at a 1 meter distance measures 68-70 dBC.



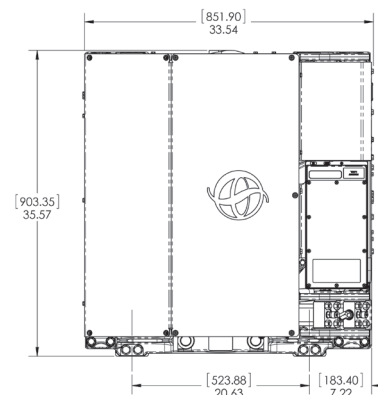
PORT VIEW



FRONT VIEW



TOP VIEW



SEAKEEPER®

Tame the Sea