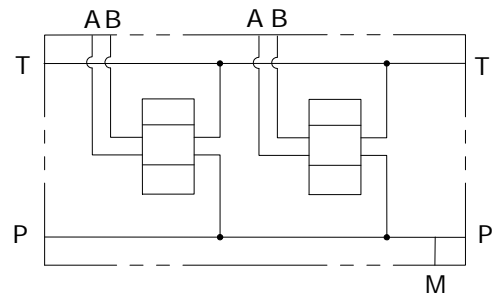
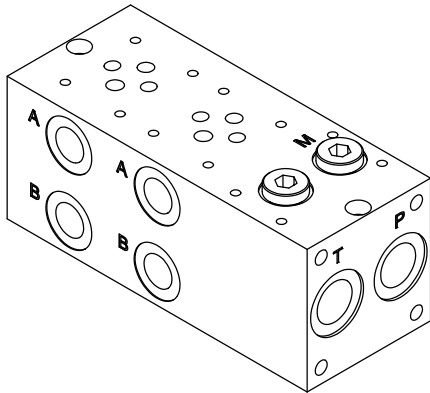


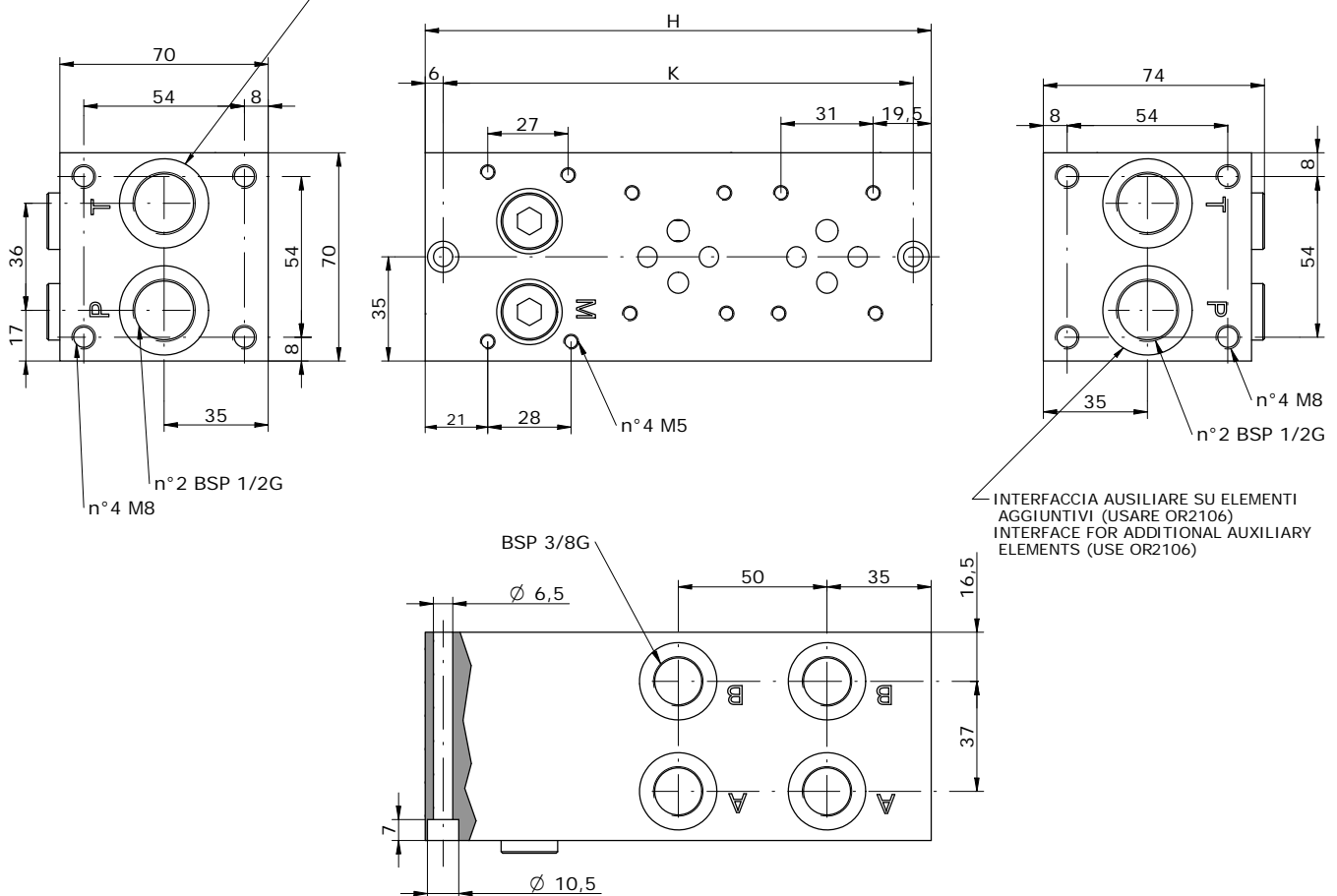
MONOBLOCCO CETOP 3 CON UTILIZZI A-B LAT 3/8" BSP . P-T POST 1/2" BSP CON VALVOLA ELETTRICA OPZIONALE
 MONOBLOCK CETOP 3 WITH A-B PORTS ON SIDE 3/8" BSP, P-T REAR 1/2" BSP WITH OPTIONAL VENTING VALVE

OLEODINAMICA
2mp

Schema idraulico
 Hydraulic diagram



INTERFACCIA AUSILIARE SU ELEMENTI AGGIUNTIVI (USARE OR2106)
 INTERFACE FOR ADDITIONAL AUXILIARY ELEMENTS (USE OR2106)



E_06 - 21 - 38 - ___ - 0

ACCESSORI DISPONIBILI / AVAILABLE ACCESSORIES:

E_06-17-12 ELEMENTO PER VENTING O VALVOLA DI MASSIMA/VENTING OR RELIEF VALVE ELEMENT (p. 14.1)

E_06-24-__ ELEMENTO AGGIUNTIVO VENTING/ VENTING ELEMENT (p. 14.2)

VEDI ASSIEMI / SEE ASSEMBLY

POS.	01	02	03	04	05	06	07	08	09	10
H	120	170	220	270	320	370	420	470	520	570
K	108	158	208	258	308	358	408	458	508	558

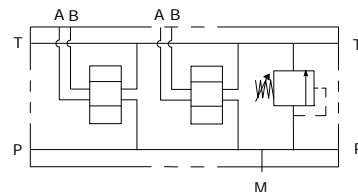
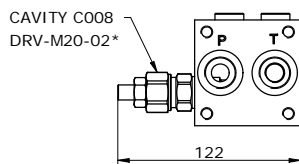
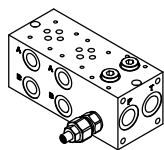
Via Nicolò Copernico 12/c-d
 29027 Casoli Di Gariga - Podenzano (PC) Italy

www.oleodinamica2mp.it
 Tel +39 0523 523231
 Fax +39 0523 524509

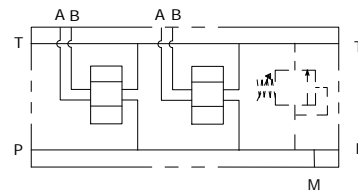
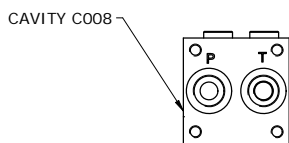
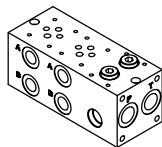
MONOBLOCCO CETOP 3 CON UTILIZZI A-B LAT 3/8" BSP . P-T POST 1/2" BSP CON VALVOLA ELETTRICA OPZIONALE
MONOBLOCK CETOP 3 WITH A-B PORTS ON SIDE 3/8" BSP, P-T BACK 1/2" BSP WITH OPTIONAL VENTING VALVE

OLEODINAMICA
2mp

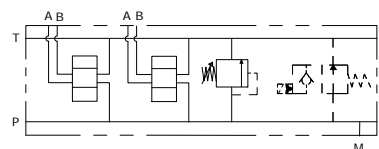
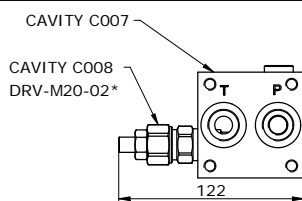
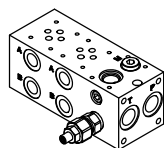
E_06 - 21 - 38 - ___ - 1



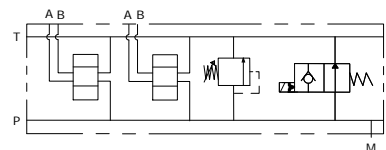
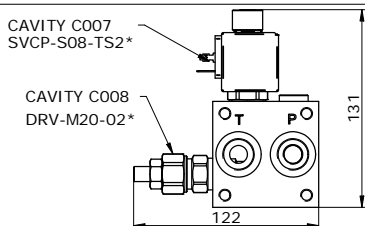
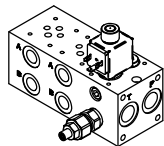
E_06 - 21 - 38 - ___ - 2



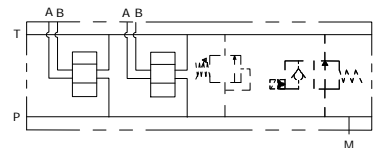
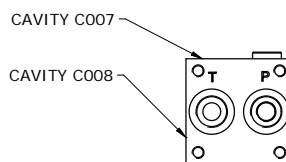
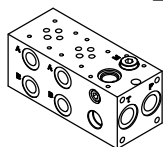
E_06 - 21 - 38 - ___ - 4



E_06 - 21 - 38 - ___ - 5



E_06 - 21 - 38 - ___ - 6



E_06 - 21 - 38 - _____

MOUNTING POSITIONS: 01÷10

S = STEEL
A = ALUMINIUM

0 = WITHOUT RELIEF VALVE
1 = WITH RELIEF VALVE
2 = RELIEF VALVE READY
4 = WITH R.V. AND V.V. READY
5 = WITH R.V. AND V.V.
6 = V.V. READY AND R.V. READY

0 = WITHOUT R.V.
1 = 5-55 bar
2 = 25-110 bar
3 = 50-215 bar
4 = 100-350 bar
5 = 100-420 bar

0 = WITHOUT RELIEF VALVE
H = HEX. HEAD SCREW **K = KNOB** **C = COVER CAP** **I = NOT ADJUSTABLE**

SEALS
N = BUNA
V = VITON

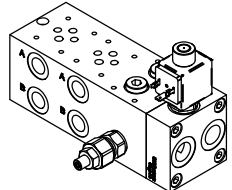
VENTING VALVE
000 = WITHOUT V.V.
TS2 = NORMALLY OPEN

VENTING VALVE
0 = NO MANUAL OVERRIDE
3 = PUSH PIN
4 = PUSH BOTTON
5 = HEX. ALLEN

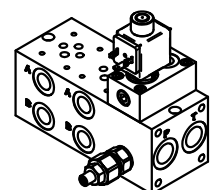
CONNECTOR TYPE
0 = WITHOUT COIL
C = CAVI / LEADS
D = DIN 43650
G = DEUTSCH DT04-2P
A = AMP JUNIOR

TENSIONE / VOLTAGE
000 = WITHOUT COIL
D12 = 12 VDC
D24 = 24 VDC
220 = 220 RAC

MONTAGGIO CON ACCESSORI / ASSEMBLY WITH ACCESSORIES:



E_06-17-12 (p. 14.1)



E_06-24- (p. 14.2)

*see **CARTRIDGE VALVES** datasheets

Via Nicolò Copernico 12/c-d
 29027 Casoli Di Gariga - Podenzano (PC) Italy

www.oleodinamica2mp.it
 Tel +39 0523 523231
 Fax +39 0523 524509