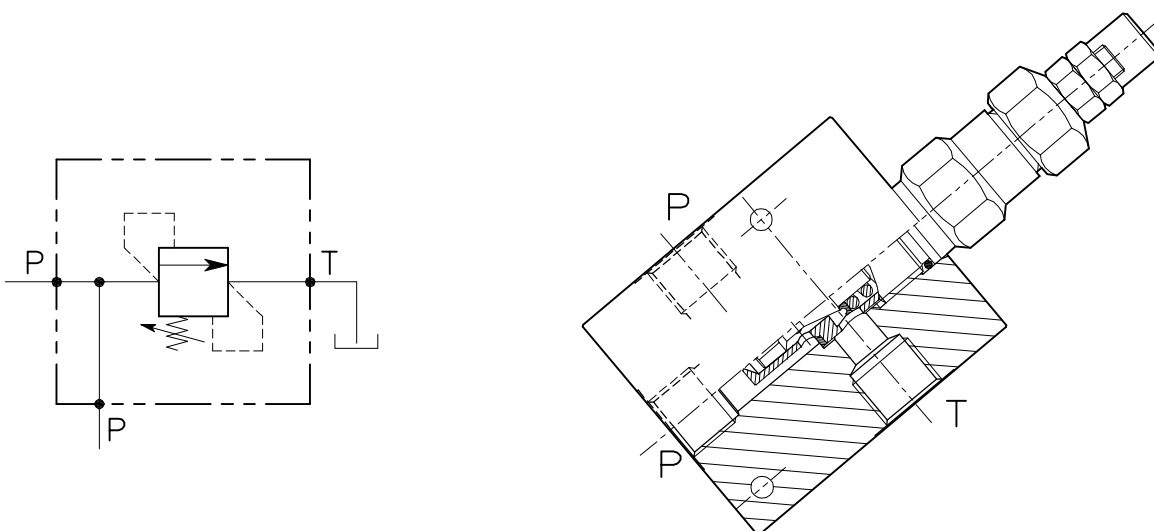


VMP-80-...-C-...

VALVOLA DI MASSIMA PRESSIONE A CARTUCCIA AD AZIONE DIRETTA CON OTTURATORE CONICO E COLLETTORE IN DERIVAZIONE
 CARTRIDGE RELIEF DIRECT ACTING POPPET TYPE VALVE WITH 90 DEGREE BODY

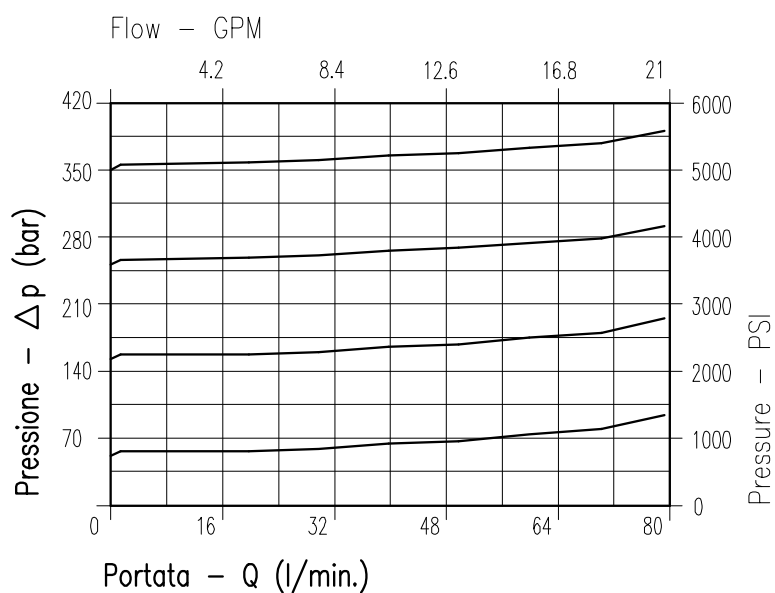


CARATTERISTICHE

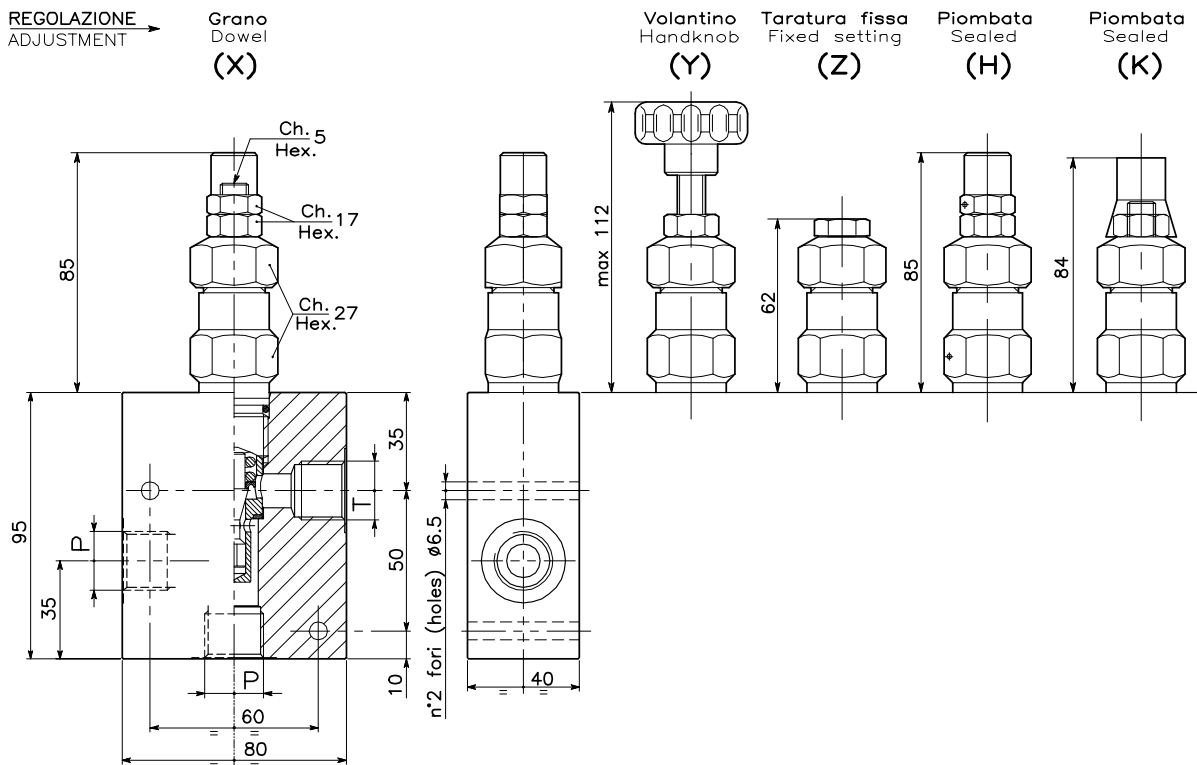
Luce nominale	DN 11
Portata min/max	80 l/min - 21 GPM
Pressione di lavoro max.	350 bar - 5075 PSI
Pressione max. di taratura	350 bar - 5075 PSI
Temperatura ambiente	-30°C + 50°C
Temperatura olio	-30°C + 80°C
Filtraggio consigliato	30÷50 micron
Peso 1/2" GAS	
Peso 3/4" GAS	

PERFORMANCE

Rated size
Min/max flow-rate
Max working pressure
Max setting pressure
Room temperature
Oil temperature
Recommended filtration
Weight 1/2" GAS
Weight 3/4" GAS



Viscosità olio 46 cSt a 50°C
Oil viscosity 46 cSt at 50°C



DIMENSIONI DIMENSIONS

Campo taratura Setting range					Attacchi Port size P-T GAS (BSPP)
021	181	182	183	184	1/2"
022	190	191	192	193	3/4"

CODICE DI ORDINAZIONE HOW TO ORDER

002 021 0 X 0

Regolazione Adjustment	
X	Grano - Dowel
Y	Volantino - Handknob
Z	Taratura fissa - Fixed setting
H	Piombata - Sealed
K	Piombata - Sealed

Campo taratura / Setting range									
021		181		182		183		184	
022		190		191		192		193	
Campo taratura 5÷50 bar (molla colore blu) Setting range 5÷50 bar (blue spring)		Campo taratura 5÷100 bar (molla colore nero) Setting range 5÷100 bar (black spring)		Campo taratura 10÷150 bar (molla colore verde) Setting range 10÷150 bar (green spring)		Campo taratura 25÷250 bar (molla colore giallo) Setting range 25÷250 bar (yellow spring)		Campo taratura 40÷350 bar (molla colore rosso) Setting range 40÷350 bar (red spring)	
Taratura standard (Q=5 l/1')	Incr. press. - bar giro/vite	Taratura standard (Q=5 l/1')	Incr. press. - bar giro/vite	Taratura standard (Q=5 l/1')	Incr. press. - bar giro/vite	Taratura standard (Q=5 l/1')	Incr. press. - bar giro/vite	Taratura standard (Q=5 l/1')	Incr. press. - bar giro/vite
Std. bar setting (Q=5 l/1')	Pressure rise - turn of screw 40 bar	Std. bar setting (Q=5 l/1')	Pressure rise - turn of screw 80 bar	Std. bar setting (Q=5 l/1')	Pressure rise - turn of screw 120 bar	Std. bar setting (Q=5 l/1')	Pressure rise - turn of screw 210 bar	Std. bar setting (Q=5 l/1')	Pressure rise - turn of screw 320 bar