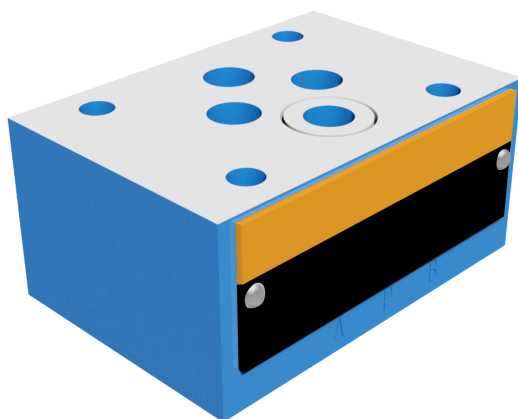




SANDWICH PLATE

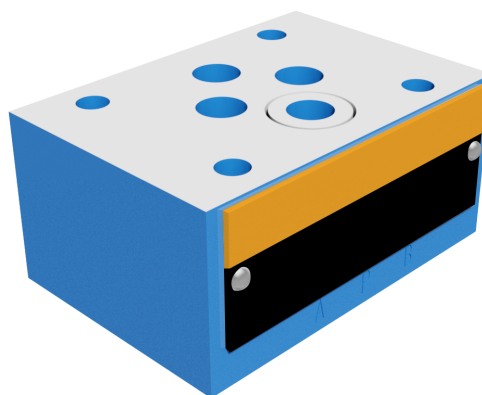
MODEL Z1S6



WWW.OLEODINAMICAMOZIONI.IT

Z156 INTRODUCTION

CHECK VALVES OF SANDWICH PLATE DESIGN ARE INTENDED FOR MATING WITH CONTROL VALVES. THEY ALLOW FREE FLOW OF FLUID IN ONE DIRECTION AND SELF-ACTING CLOSURE IN THE OPPOSITE DIRECTION. VALVES CAN BE MOUNTED IN ANY POSITION AS AN INTERMEDIATE ELEMENT BETWEEN A SUBPLATE AND A CONTROL VALVE.

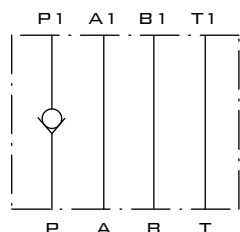


Z156 TECHNICAL DATA

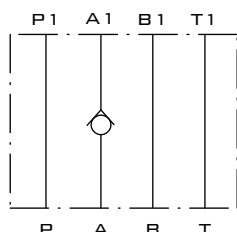
HYDRAULIC FLUID	MINERAL OIL OR PHOSPHATE ESTER
NOMINAL FLUID VISCOSITY	37 MM ² /S AT THE TEMPERATURE OF 55°C
VISCOSITY RANGE	2.8 TO 380 MM ² /S
REQUIRED FLUID FILTRATION	16 μM
RECOMMENDED FLUID FILTRATION	10 μM
MAXIMUM WORKING PRESSURE	32 MPa
CRACKING PRESSURE	0.05 MPa
MAXIMUM FLOW RATE	40 L/MIN
WEIGHT	0.6 KG

Z156 SCHEMES

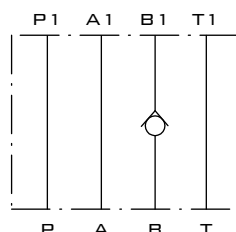
VALVE SIDE



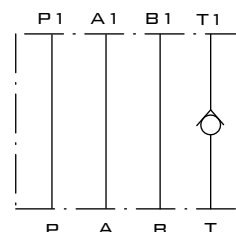
Z156 P



Z156 C



Z156 D



Z156 T

SUBPLATE SIDE

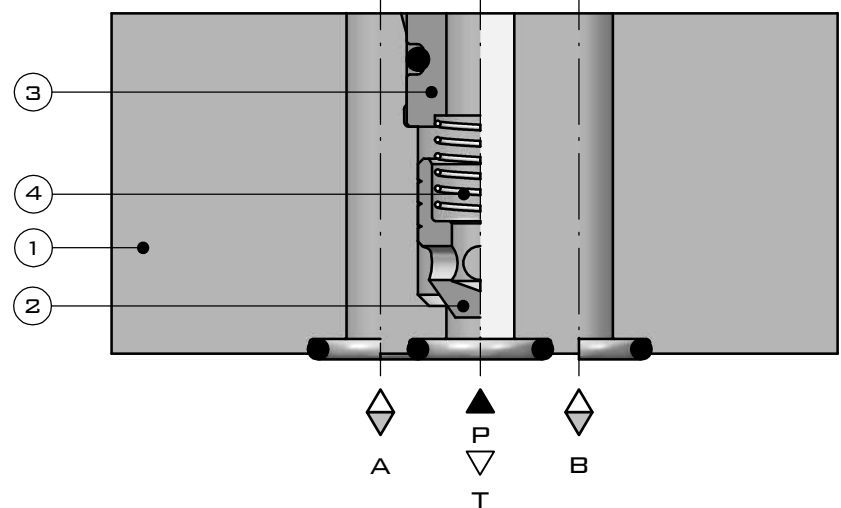
Z1S6 DESCRIPTION OF OPERATION

Z1S6P-1-30

VALVE SIDE

A1 P1 B1
T1

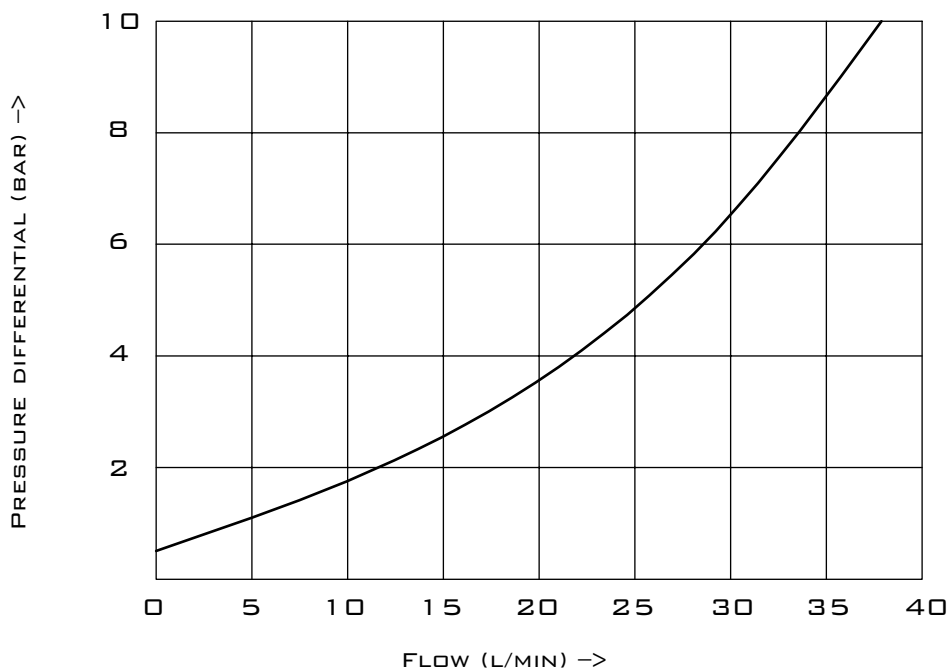
THE SLEEVE 3 WITH THE SEAT FOR THE SPRING 4 IS FITTED IN THE HOUSING 1. THE SPRING PUSHES THE POPPET 2 TO THE EDGE OF PORT P IN THE HOUSING 1. WHEN PRESSURE DIFFERENCE IN PORT P EXCEEDS THE CRACKING PRESSURE DETERMINED BY THE SPRING, THE POPPET WILL MOVE ALLOWING FREE FLOW IN LINE P, A, B, T OR A AND B.



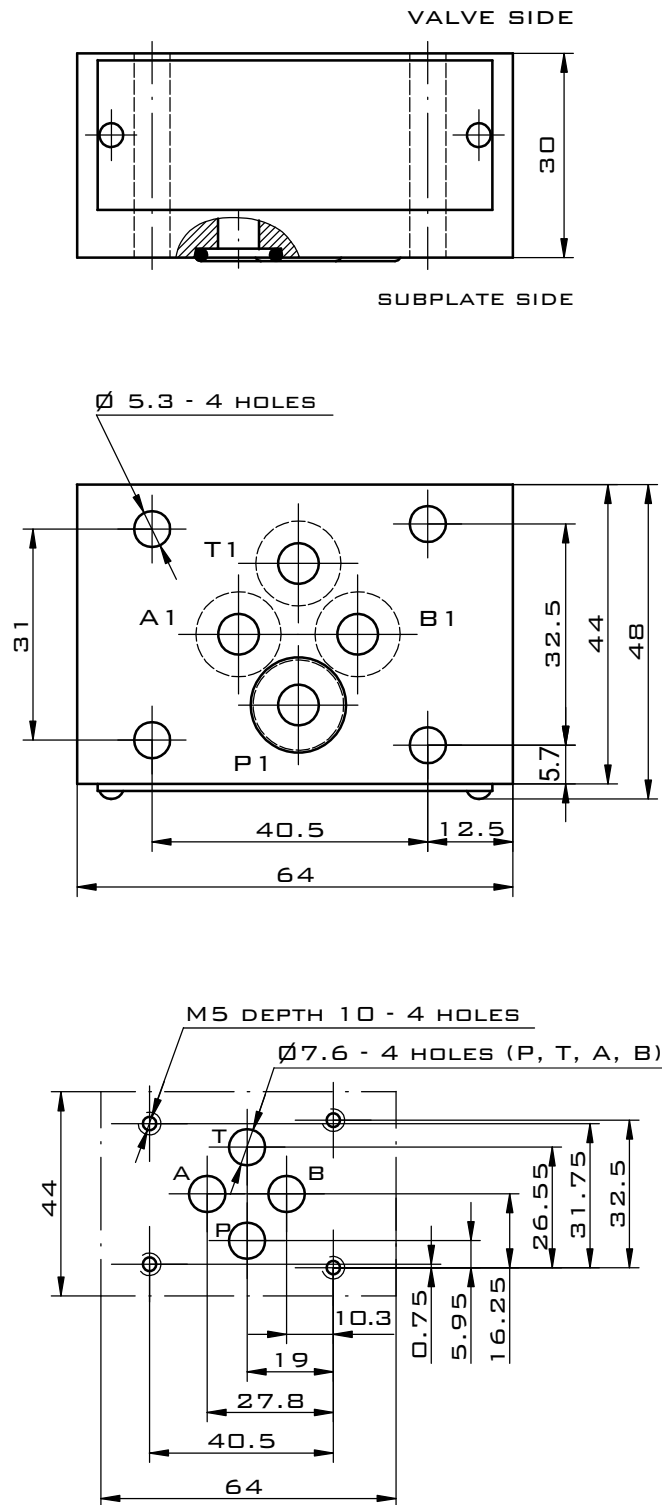
SUBPLATE SIDE

Z1S6 PERFORMANCE CURVES

MEASURED AT $v = 41 \text{ mm}^2/\text{s}$ AND $T = 50^\circ\text{C}$



Z156 OVERALL DIMENSIONS





Z1S6

SANDWICH PLATE

ORDER CODE

Z1S6 - [] [] [] [] *

CHECK VALVE

PORT P

PORT A

PORT B

PORT T

= P

= C

= D

= T

1 = CRACK PRESSURE 0.5 BAR

2 = CRACK PRESSURE 3 BAR

3 = CRACK PRESSURE 5 BAR

ADDITIONAL REQUIREMENTS IN CLEAR TEXT
(TO BE AGREED WITH THE MANUFACTURER)

SEALING

FLUIDS ON MINERAL OIL BASE = NO DESIGNATION

FLUIDS ON PHOSPHATE ESTER BASE = V

30 =

30 SERIES