

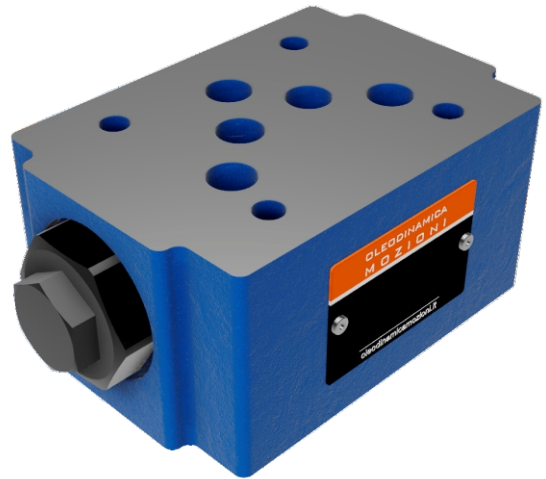


VALVOLE DI RITEGNO

Z2S10

PILOT OPERATED CHECK VALVES

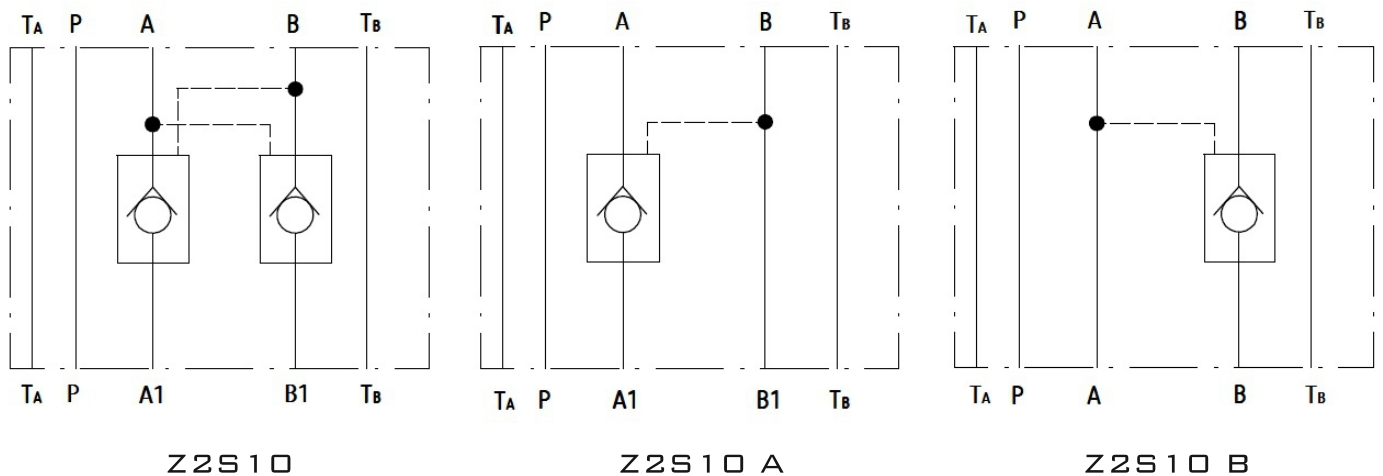
Z2S10 SERIES ARE PILOT OPERATED CHECK VALVES.
 THIS VALVES ARE USED TO SHUT-OFF AN OIL FLOW IN ONE DIRECTION AND ALLOW FREE FLOW IN THE OPPOSITE DIRECTION.
 THEY CAN ALSO BE OPENED IN THE DIRECTION OF CLOSURE.



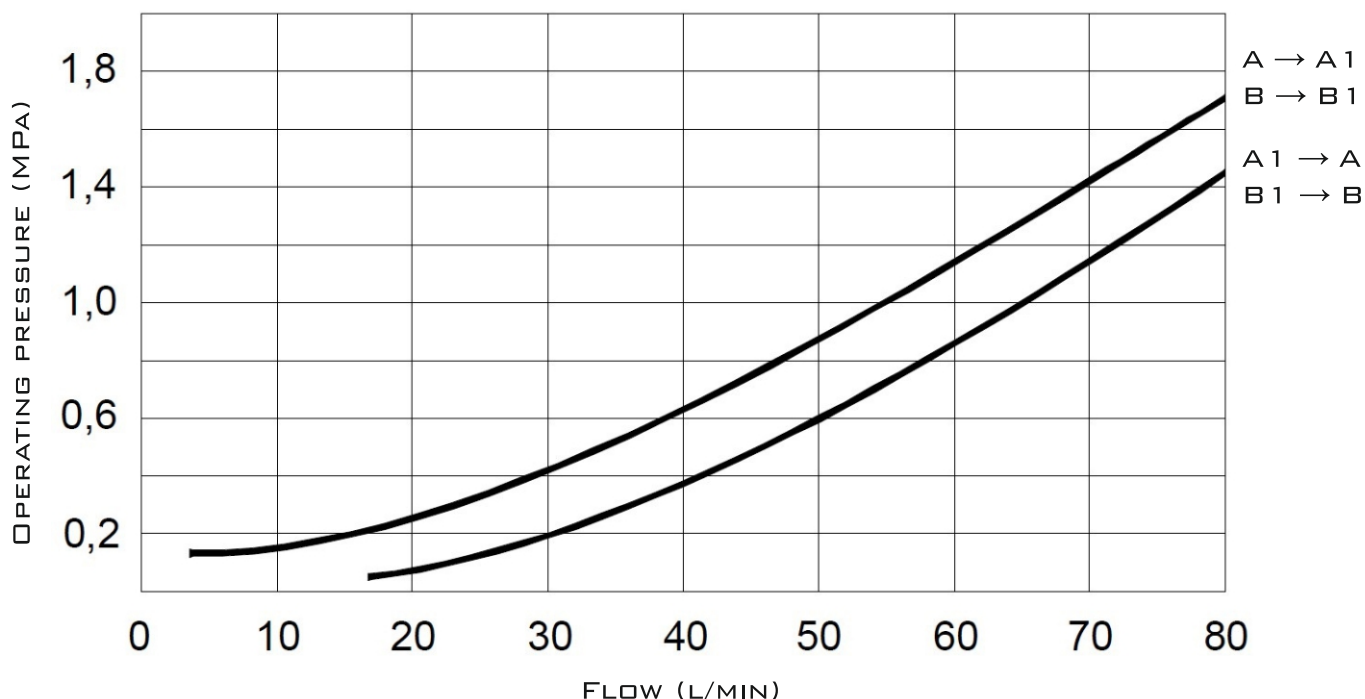
TECHNICAL DATA

SIZE	10
OPERATING PRESSURE (MPA)	31.5
MAX. FLOW RATE (L/MIN)	120
FLUID TEMPERATURE (°C)	-30 - 80
WEIGHT (KG)	2.2
VALVE BODY (MATERIAL)	CASTING PHOSPHATING SURFACE

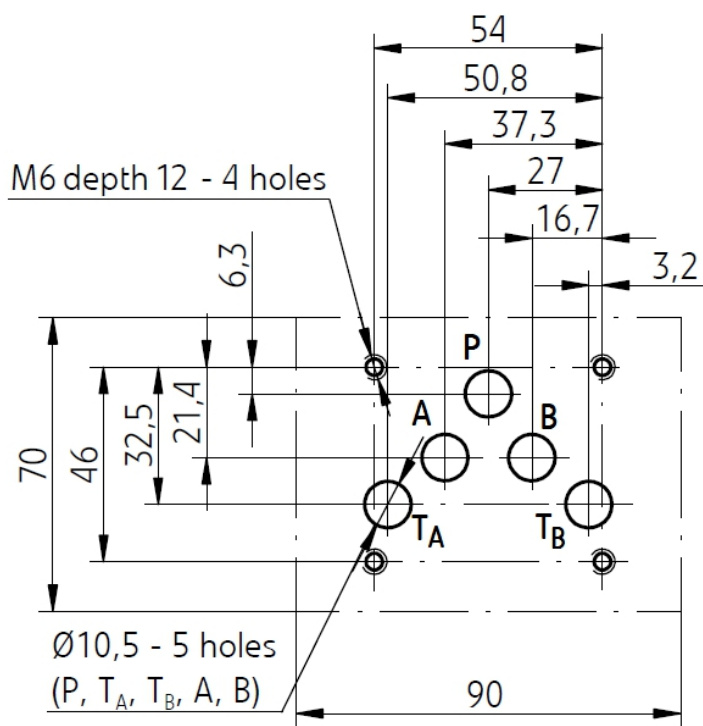
SCHEMES



CHARACTERISTIC CURVES



SUBPLATE INSTALLATION DIMENSIONS



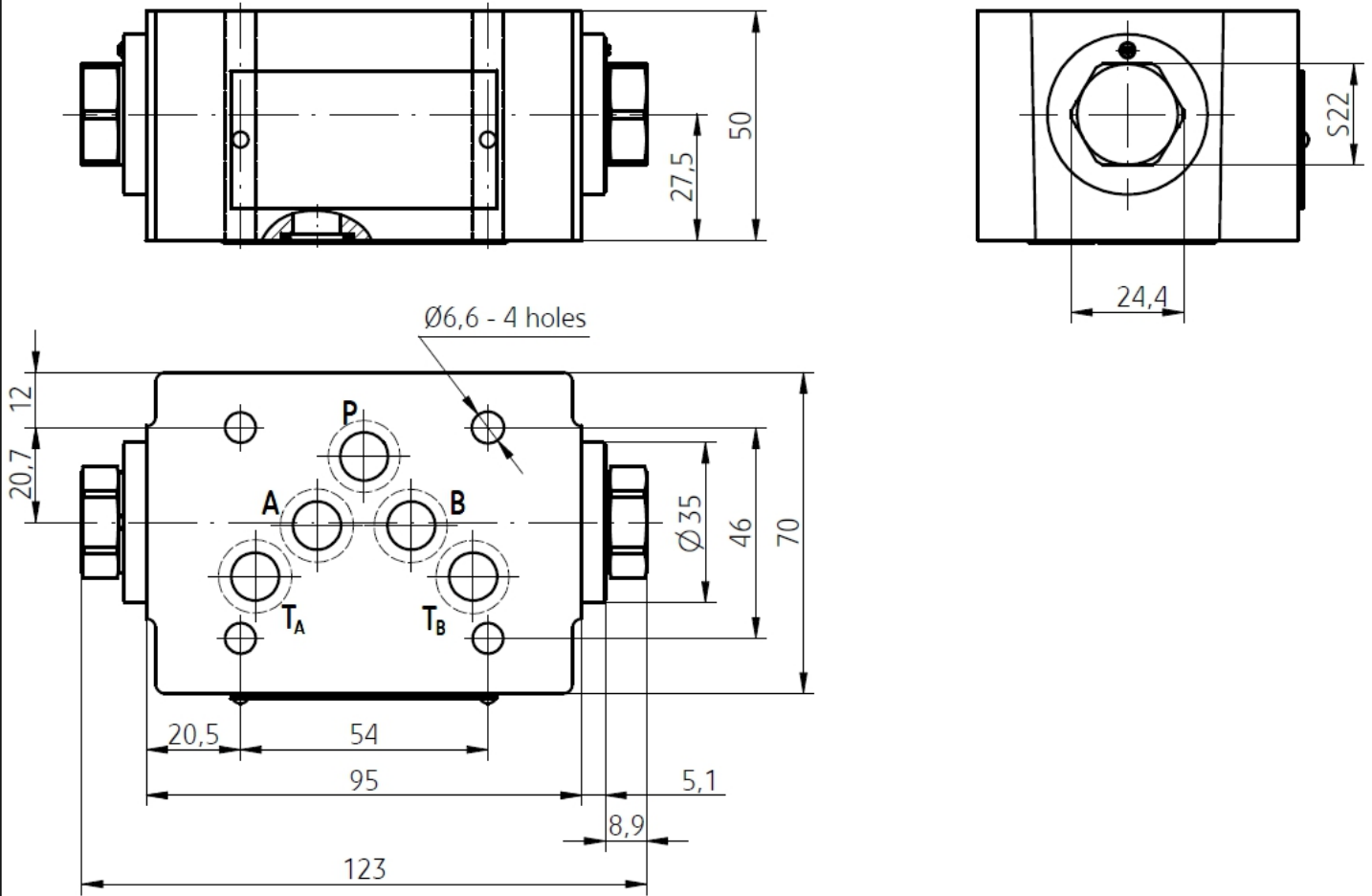


VALVOLE DI RITEGNO

Z2S10

PILOT OPERATED CHECK VALVES

SUBPLATE INSTALLATION DIMENSIONS



ORDER CODE

Z2S	10			30	
-----	----	--	--	----	--

10=10 SIZE

NO CODE=PORT A, B WITH CHECK VALVE
 A=PORT A WITH CHECK VALVE
 B=PORT B WITH CHECK VALVE

1=OPENING PRESSURE 0.15 MPA
 2=OPENING PRESSURE 0.3 MPA
 3=OPENING PRESSURE 0.6 MPA

NO CODE=MINERAL
 SUBSTANCE HYDRAULIC OIL
 V=PHOSPHATE EATER
 HYDRAULIC OIL

20=20 SERIES
 30=30 SERIES