

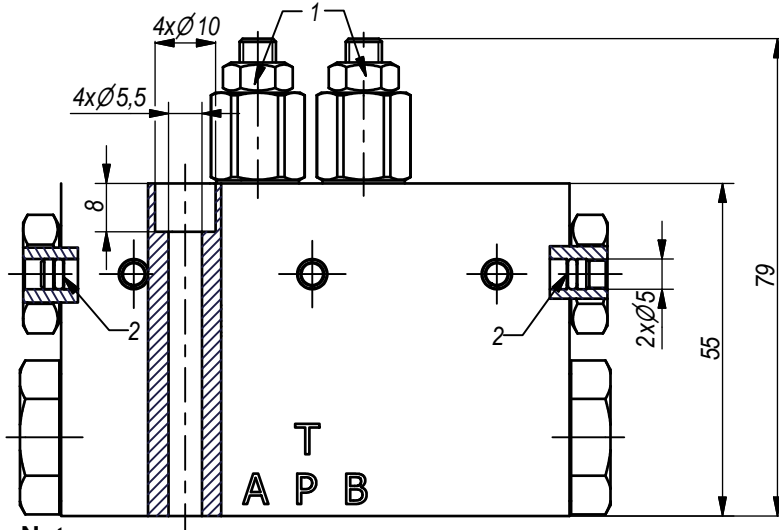
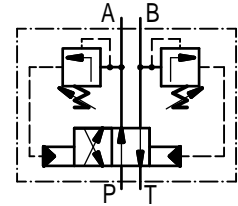
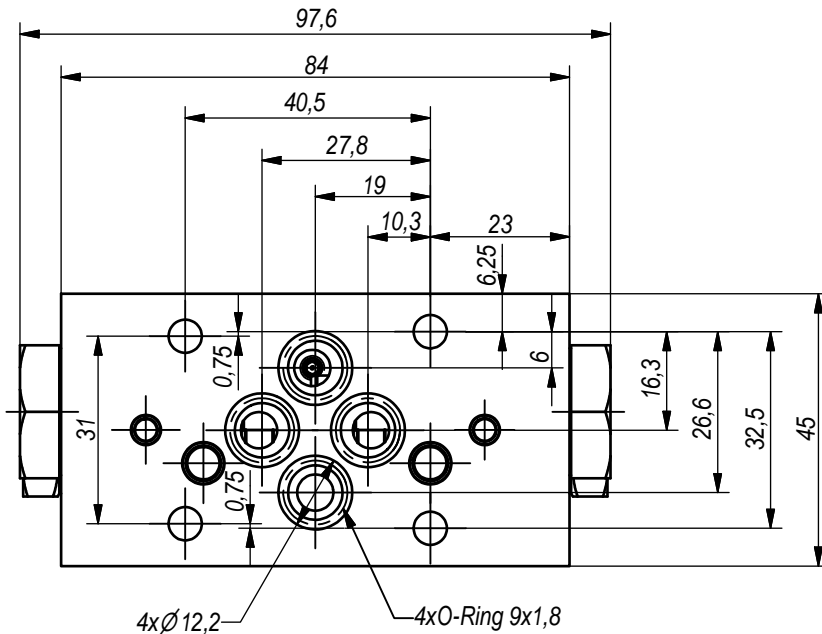


**Hidro
Pnevmotekhnika**

3, Vojeli St., Kazanlak, Bulgaria
Tel.: +359 431/62 228
Fax.: +359 431/62 019
e-mail : info@hpt-bg.com
www.hpt-bg.com

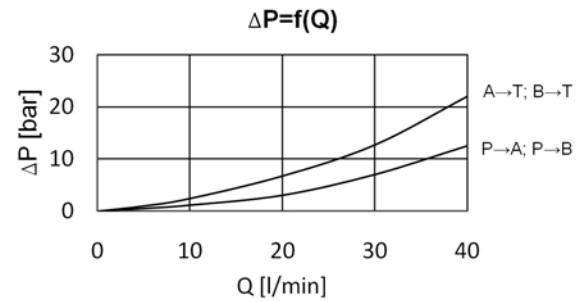
HYDRAULIC DIRECTIONAL VALVE WITH AUTOMATIC SWITCHING

4/2 RHA06/20



Note:

- All performances and calibration are carried out by using hydraulic oil with viscosity approx 46 cSt at 50 °C.
- Initial switching of directional control valve - by push pins position 2.
- Mounting plate:
 - acc. to ISO 4401-AB-03-4A (CETOP3)
- Tightening torque of connecting screws on the mounting plate - 8,5 N.m.



TECHNICAL DATA		
General		
Ambient temperature	°C	-20...+50
Hydraulic		
Working pressure P _w	bar	50..200
Pressure adjustment of relief valves position 1		P _w +10%P _w
Flow rate	L/min	3..40
Working fluid – mineral oil		
- viscosity	mm ² /s	10...100
- filtration level	μm	25 or better
- temperature	°C	-20...80

ORDERING CODE

4/2 RHA06 / 20

