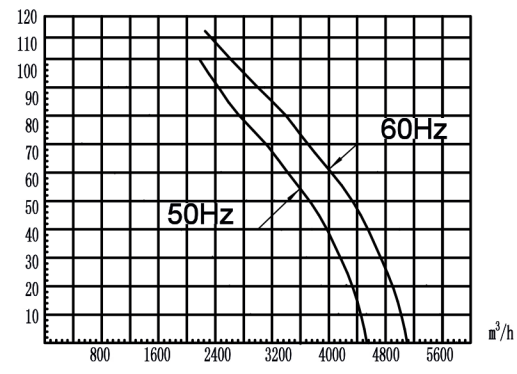
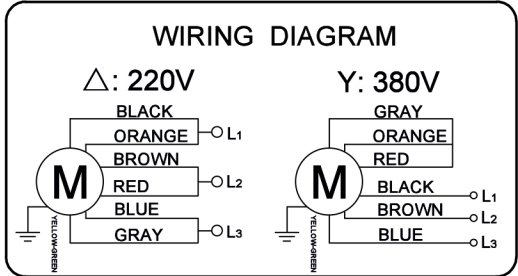


LABEL:

YWF4D-400EXS
Axial Fan Motor

220V 50/60Hz 0.95/1.00A 220/300W 1360/1530r/min
380V 50/60Hz 0.55/0.58A 220/300W 1360/1530r/min
CL.B 202*. **

**Wiring diagrams:
single phase:**



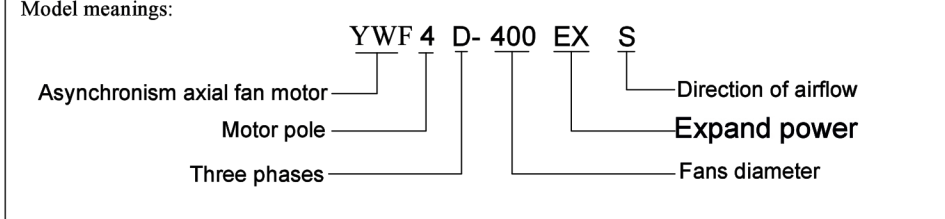
Axial Fan Motor

OMT Group S.p.A.

Unit:axial fan motor	Type:
Motor:single phases motor	Customer:
Motor type:YWF4D-400EX	Customer type:

type	voltage V	frequency Hz	input power W	current A	speed r/min+/-5%	air volume m³/h	noise level dBA	capacitor uF/VDB
YWF4D-400EX	220	50	220	0.95	1360	4530	68	/
	220	60	300	1.00	1530	5100	70	/
	380	50	220	0.55	1360	4530	68	/
	380	60	300	0.58	1530	5100	70	/

Insulation class:B	Operating type:S1
Permissible ambient temperature:-30-60°C	Temperatue increase:T<75K
Motor protection:	Bearing:ball bearing
Protection class:IP44 in accordance with EN 60335-1	License:CE CCC



High-voltage test according to EN 60335-1 2200V

Electrical connection:lead wire silikon 4G 0.50mm²,length 100mm in terminal box connected

Direction of rotation:
clockwise(sucking) Airflow direction:"S" looking at rotor side
Anticlockwise(blowing), airflow direction:"B" looking ai rotor side

Material/surface treatment:rotor with condensation drain holes varnished black, stator moisture protected, guard grille plastic coated.

Balancing grade: fan balanced dynamically in two plances. G6.3

APPROX WEIGHT 6.6kg

REV.	DESCRIPTION	APPROVED	DATE	DECIMAL	TOLERANCE	SIGN	DATE	OMT Group code:	ES03450A-M ES03450S-M
				X	±0.5	DRN.BY		PROJECTION	A4
				X.X	±0.25	CHD.BY			SCALE
				X.XX	±0.15	ENG.BY			SHEET: of
				ANGLE	±3°	APP.BY			