

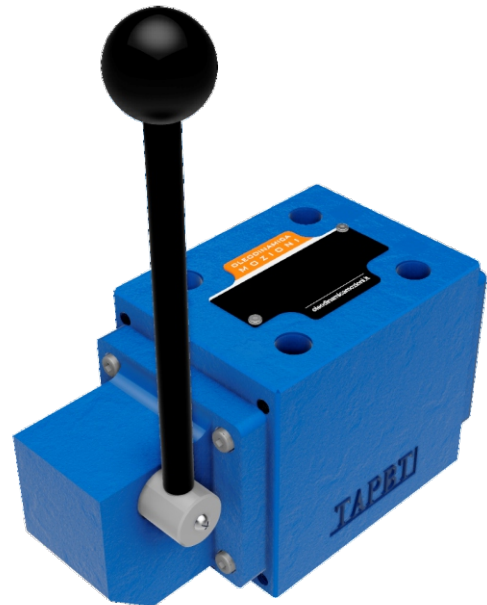


**DISTRIBUTORI
OLEODINAMICI**

WMM10

MANUALLY OPERATED
DIRECTIONAL CONTROL VALVES

WMM10 SERIES MANUALLY OPERATED DIRECTIONAL CONTROL VALVES ARE DIRECT TYPE DIRECTIONAL SPOOL VALVES. THESE VALVES ARE USED TO THE START, STOP AND DIRECTION OF FLOW. THIS SERIES WITH DETENT OR RETURN SPRING ARE AVAILABLE.



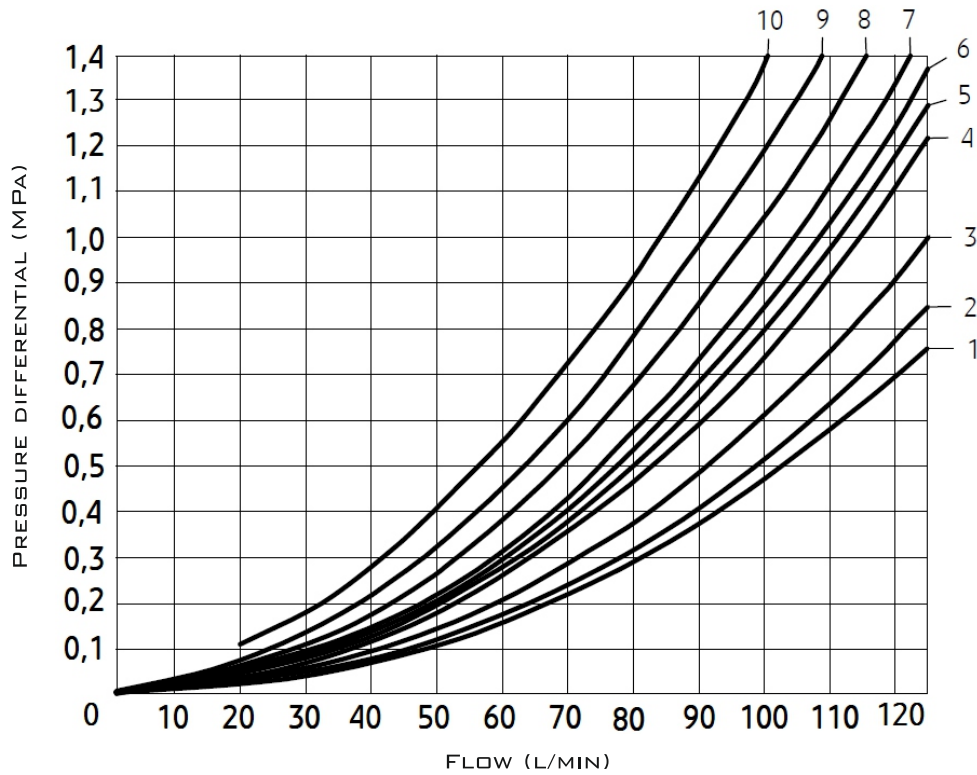
TECHNICAL DATA

SIZE		10
MAX. FLOW RATE (L/MIN)		100
OPERATING PRESSURE (MPA)	A, B, P PORTS	31.5
	T PORT	16
WEIGHT (KG)		4.4
VALVE BODY (MATERIAL)		CASTING PHOSPHATING SURFACE



CHARACTERISTIC CURVES

$\Delta P-Q$ CHARACTERISTIC CURVES



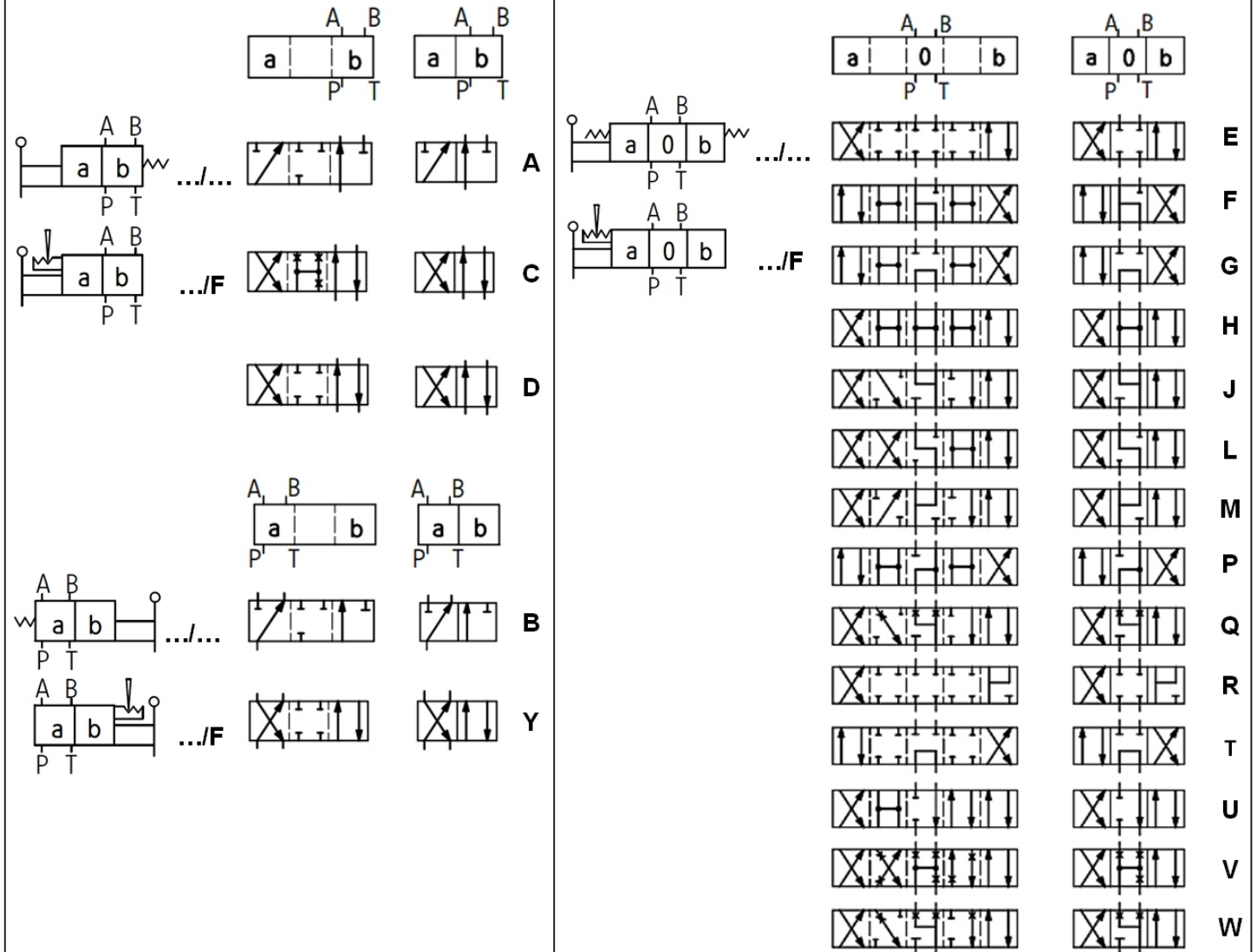
SPOOL SYMBOL	FLOW DIRECTION			
	P - A	P - B	A - T	B - T
A; B	3	3	-	-
C	3	3	4	5
D; Y	5	5	6	6
E	1	1	4	4
F	2	3	7	4
G	3	3	6	7
H	1	1	6	7
J	1	1	3	3
L	2	2	3	5
M	1	1	4	5
P	4	2	5	7
Q	1	2	1	3
R	3	6	4	-
T	3	3	6	7
U, V	2	2	3	3
W	2	2	4	5

9 CURVE - SPOOL SYMBOL "R" IN SHIFTED POSITION B → A;
 3 CURVE - SPOOL SYMBOL "H" IN CENTRAL POSITION P → T;
 4 CURVE - SPOOL SYMBOL "F" IN CENTRAL POSITION P → A;
 9 CURVE - SPOOL SYMBOL "F" IN CENTRAL POSITION A → T,
 SPOOL SYMBOL "F", "G" AND "T" IN CENTRAL POSITION
 P → T;
 5, 8, 10 CURVES - SPOOL SYMBOL "P" IN CENTRAL
 POSITION P → B, B → T AND P → T.

SPOOL SYMBOLS

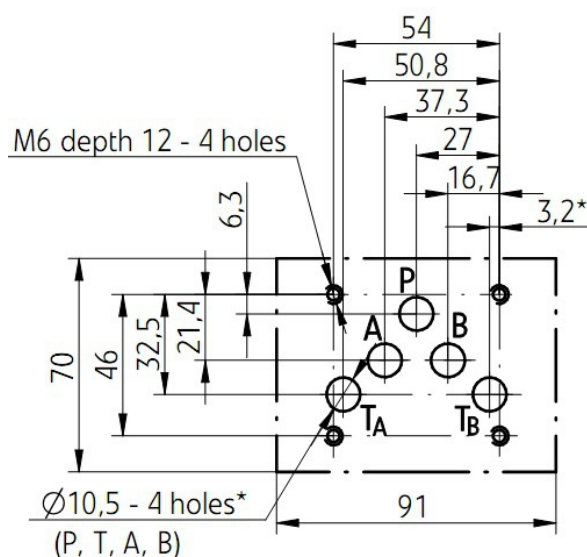
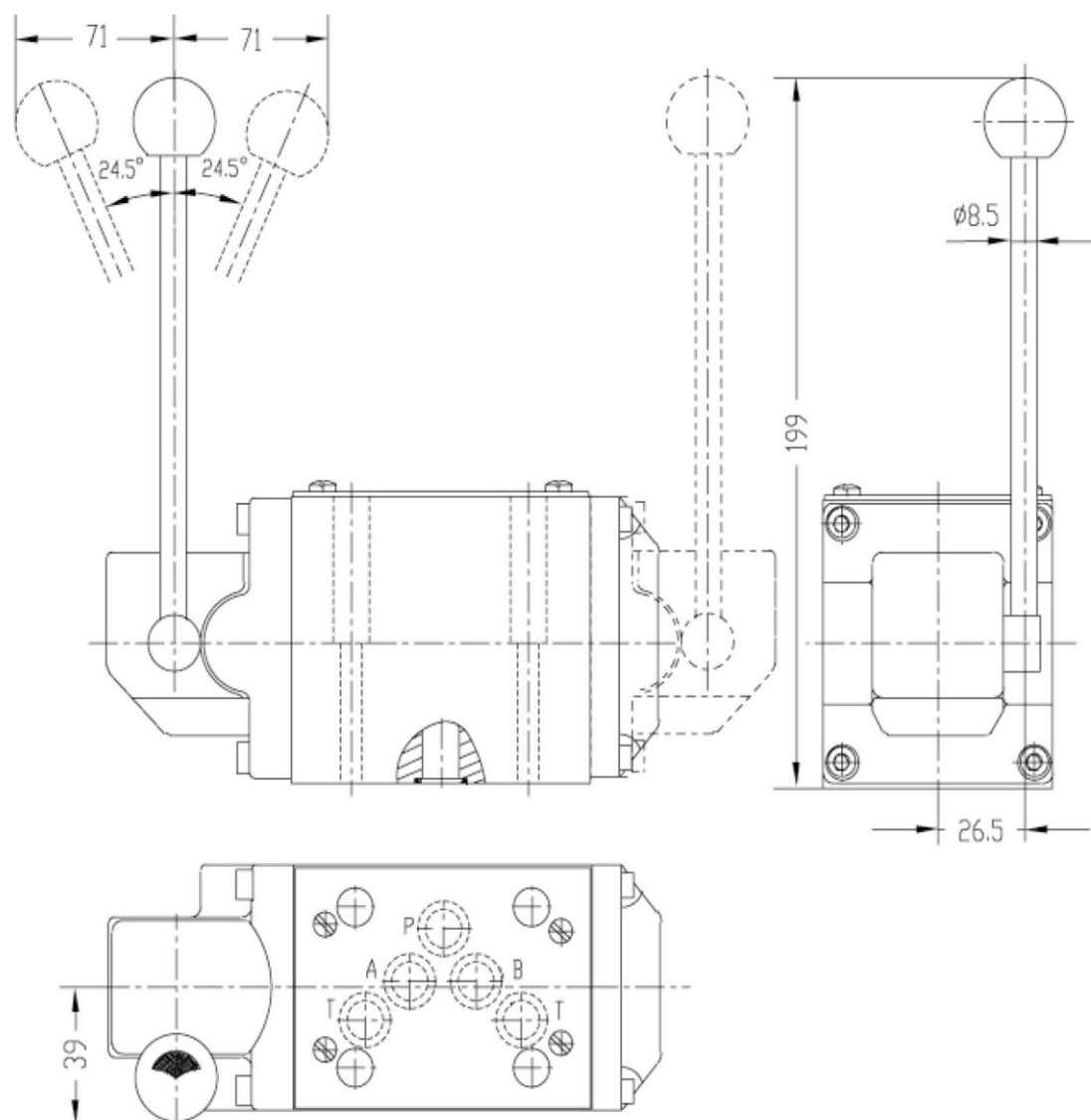
2-POSITION VALVES

3-POSITION VALVES



SEE ALSO:
WMM6, WMM16,
WMM25

SUBPLATE INSTALLATION DIMENSIONS



* - CONNECTION WITH 1 HOLE
T FROM PORT SIDE A OR B
IS SUFFICIENT - HOLES T_A
AND T_B ARE CONNECTED TO
THE PORT T IN THE HOUSING
OF DIRECTIONAL SPOOL VALVE



DISTRIBUTORI
OLEODINAMICI

WMM10

MANUALLY OPERATED
DIRECTIONAL CONTROL VALVES

ORDER CODE

	WMM	10							
--	-----	----	--	--	--	--	--	--	--

3=3-WAY
4=4-WAY

10=10 SIZE

SPOOL TYPE

10=10 SERIES
50=50 SERIES

NO CODE=SPRING RETURN WITHOUT DETENT
F=DETENT WITHOUT SPRING RETURN

NO CODE=HANDLE ON SIDE OF
PORT A
L=HANDLE ON SIDE OF PORT B

NO CODE=MINERAL SUBSTANCE
HYDRAULIC OIL
V=PHOSPHATE EATER
HYDRAULIC OIL

NO CODE=WITHOUT THROTTLE INSERT
B0.8=THROTTLE 0.8 MM
B1.0=THROTTLE 1.0 MM
B1.2=THROTTLE 1.2 MM