

1. 无线Wi-Fi配网

1.1 APP下载

方法一 扫码右方的二维码，下载APP。



方法二 扫描采集器上贴膜的二维码。

方法三 在应用市场中搜索名称为“Sun house”的APP进行下载。

1.2 注册账号

① 在APP首页，点击“注册”按钮，按提示填写相关信息，完成注册。



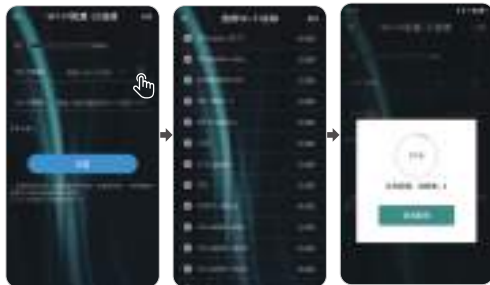
2. 配网和添加设备

2.1 Wi-Fi采集器连接路由器

① 采集器上电PWR指示灯亮起后，打开手机蓝牙和Sun house APP，点击“Wi-Fi配置”按钮，进入“搜索设备”页面，页面会自动显示出附近的蓝牙设备。



② 选择需要配网的采集器，进入配网页面，点击搜索图标，可以选择周边Wi-Fi热点名称。



2.2 添加设备

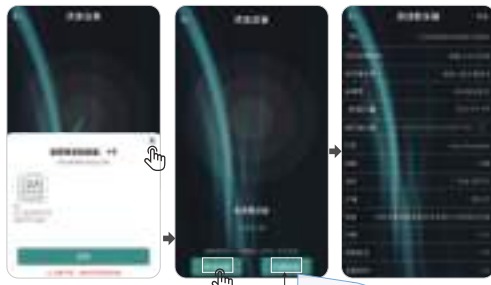
方法一 ① 进入数采器列表页，点击右上角“+”，进入设备添加页面，将手机靠近设备，APP自动扫描设备。

② 扫描到设备后，选择与采集器标签ID一致的ID，点击“添加”

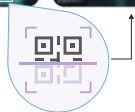
注：扫描前请先确认采集器ID，若在机器表面未找到ID信息，可以在配网页面查看ID。



方法二 “手动添加”，根据界面提示手动输入采集器ID、名称等信息，完成添加设备。



方法三 “扫描添加”，扫描采集器贴膜的二维码ID号，进行对应采集器添加设备。



3. 采集器故障诊断和指示灯判断

3.1 采集器故障诊断

① 在设备配网完成或者失败后，可通过点击右上角的诊断，进行故障诊断。



3.2 采集器指示灯状态

PWR (电源指示灯)：

亮：供电正常
灭：供电异常

COM (串口传输指示灯)：

灭：无数据交互
亮 0.3 秒，亮 0.9 秒：串口输出数据
灭 0.3 秒，亮 0.3 秒：串口接收数据
常亮：双向收发。

NET (网络状态指示灯)：

灭 0.3 秒，亮 3 秒：STA 模式连接上路由器
灭 0.3 秒，亮 0.3 秒：STA 未连接上路由器

SRV (服务器连接指示灯)：

亮：已连接到服务器
灭：未连接到服务器

1. Wireless Wi-Fi Distribution Network

1.1 APP Download

Method 1

Scan the QR code on the right, download the app.



Method 2

Scan the QR code of the film on the collector.

Method 3

Search in the application market to download the APP named "Sun house" for download.

1.2 Registered Account

① On the App home page, click the "Register" button, fill in the relevant information according to the prompt, and complete the registration.



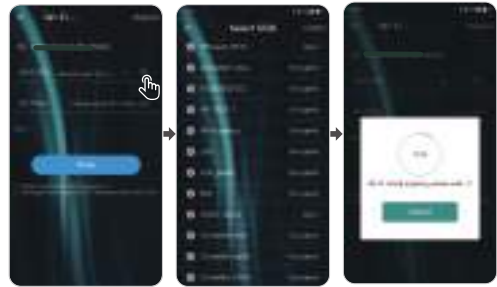
2. Supporting Network And Adding Device

2.1 Wi-Fi Collector Connection Router

① After the PWR indicator on the collector is on, turn on the mobile phone Bluetooth and Sun house APP, click the "Wi-Fi Configuration" button to enter the "Searching" page, and the page will automatically display the nearby Bluetooth device.



② Select the collector that needs to be distributed, enter the matching webpage, and click the search icon. You can choose the Wi-Fi hotspot name.



2.2 Add Device

Method 1 ① Enter the Data logger list of the APP, click "+" in the upper right corner, enter the device to add the page, close the mobile phone close to the device, and the app scan the device automatically.

② After scanning to the device, select the ID that is consistent with the ID of the collector tag, and click "Add"

Note: Please confirm the collector ID before scanning. If the ID information is not found on the surface of the machine, you can view the ID on the matching page.



Method 2 "Manually Add", complete the adding device according to the interface prompt manual output collector ID, name and other information.



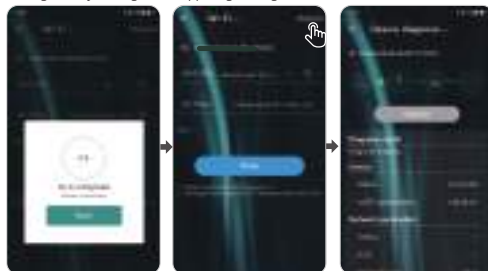
Method 3 "Scan Add", scan the QR code ID number of the collector film, and perform the device with the corresponding collector.



3. Collector Fault Diagnose And Indicator Light Judgment

3.1 Collector Fault Diagnose

① After the device distribution network is completed or failed, you can make a failure diagnosis by clicking on the upper right "Diagnose".



3.2 Collector Indicator Status

PWR (power indicator light):

On: normal power supply
Off: abnormal power supply

COM (serial port transmission indicator):

Off: Number of data interaction
Off for 0.3 seconds, on for 0.9 seconds: serial output data
Off for 0.3 seconds, on for 0.3 seconds: serial port receiving data
On: Two-way receiving and receiving

Net (network status indicator):

Off for 0.3 seconds, on for 3 seconds: STA mode connects the upper router
Off for 0.3 seconds, on for 0.3 seconds: STA is not connected to the upper router

SRV (server connection indicator):

On: Has been connected to the server
Off: Uninterrupted to the server