

Magnat

Monitor S Series



MONITOR S LINE –

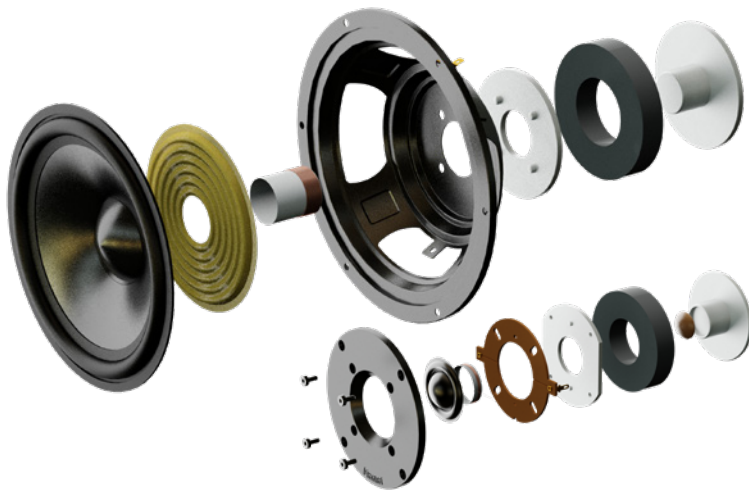
HOME CINEMA WITH DOLBY ATMOS WITH HIGH QUALITY

The Monitor S-Line is comprised of 7 models:

2 sizes of floorstanding speakers, 2 sizes of bookshelf speakers, 2 powerful center speakers and one pair of dipole speakers for a very immersive cinema sound.

DRIVERS

- Klippel®-optimised
- Newly developed tweeter with fabric composite dome, front panel with dedicated sound guidance for optimum dispersion properties
- FE-Dynamics woofers and midrange drivers with coated paper cones, new phase-optimized dust domes and linearized magnet systems
- Woofer and midrange drivers with solid coated metal basket



CABINET

- Very solid low-resonance construction made of E1 MDF panels
- Dedicated closed cabinet section for atmos speaker
- High-quality wood decors, available in black and walnut, with anthracite contrasting front baffle
- Detachable fabric grille
- Airflex port with rounded reflex opening for reducing wind noises
- Resonance-damping rubber feet included



TECHNICAL DETAILS

MONITOR S80 ATM

Floorstanding Speaker with dolby atmos module
2 ½ -way bass reflex

DRIVERS

2 x 6,5" woofer-midrange
1 x 1.1" dome-tweeter
1 x 4,5" coaxial speaker

DOLBY ATMOS ENABLED SPEAKER

- Coaxial speaker specially designed according to Dolby Atmos guidelines
- 20 mm tweeter with fabric dome and neodymium driver
- 100 mm bass-midrange driver with specially coated lightweight paper
- Solid coated metal basket

POWER HANDLING (RMS/MAX)

Main speaker: 160/300 W
Dolby Atmos speaker: 40/80 W

IMPEDANCE

Main speaker: 4 Ohms
Dolby Atmos speaker: 4 Ohms

FREQUENCY RESPONSE

Main speaker: 26 – 38.000 Hz
Dolby Atmos speaker: 60 – 28.000 Hz

CROSSOVER FREQUENCIES

Main speaker: 500 Hz, 3.000 Hz
Dolby Atmos speaker: 7.000 Hz

RECOMMENDED AMPLIFIER OUTPUT

Main speaker: 30 – 300 W
Dolby Atmos speaker: 15 – 80 W

SENSITIVITY

Main speaker: 90 dB
Dolby Atmos speaker: 87 dB

CROSSOVER

- Amplitude- and phase-optimised crossover
- Separate connection terminals for the atmos module
- Connecting terminal with gold-plated and encapsulated screw terminals

CABINET SURFACE

Black
Walnut

DIMENSIONS (WxHxD)

215 x 860 x 270 mm

WEIGHT

13.4 kg

ART.NO. /EAN

Black: D144806 / 4018843448060
Walnut: D144807 / 4018843448077



FMAX
TWEETER



FE DRIVER
DYNAMICS



FERROFLUID
COOLED



KLIPPEL
OPTIMIERT



ENGINEERED
IN GERMANY



APOC



Manufactured under license from Dolby® Laboratories.
Dolby, Dolby Atmos, and the double-D symbol are registered
trademarks of Dolby Laboratories Licensing Corporation.

TECHNICAL DETAILS

MONITOR S70

Floorstanding Speaker, 3-way bass reflex

DRIVERS

2 x 6.5" woofer
1 x 6.5" midrange
1 x 1.1" dome-tweeter

POWER HANDLING (RMS/MAX)

190/380 W

IMPEDANCE

4 – 8 Ohms

FREQUENCY RESPONSE

19 – 38.000 Hz

CROSSOVER FREQUENCIES

400 Hz, 2.900 Hz

RECOMMENDED AMPLIFIER OUTPUT

30 – 380 W

SENSITIVITY

91 dB

CROSSOVER

- Amplitude- and phase-optimised crossover
- Connecting terminal with gold-plated and encapsulated screw terminals

CABINET SURFACE

Black
Walnut

DIMENSIONS (WxHxD)

215 x 960 x 310 mm

WEIGHT

15 kg

ART.NO. /EAN

Black: D144804 / 4018843448046

Walnut: D144805 / 4018843448053



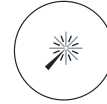
FMAX
TWEETER



FE
DRIVER
DYNAMICS



FERROFLUID
COOLED



KLIPPEL
OPTIMIERT



ENGINEERED
IN GERMANY



APOC



TECHNICAL DETAILS

MONITOR S30

Bookshelf Speaker, 2-way bass reflex

DRIVERS

1 x 6,5" woofer-midrange
1 x 1.1" dome tweeter

POWER HANDLING (RMS/MAX)

100/200 W

IMPEDANCE

4 – 8 Ohms

FREQUENCY RESPONSE

34 – 38.000 Hz

CROSSOVER FREQUENCIES

2.900 Hz

RECOMMENDED AMPLIFIER OUTPUT

30 – 200 W

SENSITIVITY

90 dB

CROSSOVER

- Amplitude- and phase-optimised crossover
- Connecting terminal with gold-plated and encapsulated screw terminals

CABINET SURFACE

Black
Walnut

DIMENSIONS (WxHxD)

215 x 354 x 270 mm

WEIGHT

5.8 kg

ART.NO. /EAN

Black: D144802P / 4018843448022

Walnut: D144803P / 4018843448039



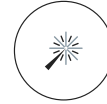
FMAX
TWEETER



FE DRIVER
DYNAMICS



FERROFLUID
COOLED



KLIPPEL
OPTIMIERT



ENGINEERED
IN GERMANY



APOC



TECHNICAL DETAILS

MONITOR S10 D

Bookshelf and on-wall speaker, 2-way, dipole
(Dipole tweeter section with two additional side-mounted tweeters)

DRIVERS

1 x 4.5" woofer-midrange
3 x 1/2" dome-tweeter

POWER HANDLING (RMS/MAX)

60/120 W

IMPEDANCE

4 – 8 Ohms

FREQUENCY RESPONSE

42 – 32.000 Hz

CROSSOVER FREQUENCIES

3.400 Hz

RECOMMENDED AMPLIFIER OUTPUT

20 – 120 W

SENSITIVITY

88 dB

CROSSOVER

■ Amplitude- and phase-optimised crossover

CABINET SURFACE

Black
Walnut

DIMENSIONS (WxHxD)

149 x 250 x 130 mm

WEIGHT

2.2 kg

ART.NO. /EAN

Black: D144814P / 4018843448145

Walnut: D144815P / 4018843448152



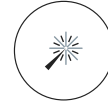
LIGHT WEIGHT
DOME



FE DRIVER
DYNAMICS



FERROFLUID
COOLED



KLIPPEL
OPTIMIERT



ENGINEERED
IN GERMANY



APOC



TECHNICAL DETAILS

MONITOR S10 B

Bookshelf speaker, 2-way

DRIVERS

1 x 4.5" woofer-midrange
½" dome tweeter

POWER HANDLING (RMS/MAX)

60/120 W

IMPEDANCE

4 – 8 Ohms

FREQUENCY RESPONSE

42 – 32.000 Hz

CROSSOVER FREQUENCIES

3.400 Hz

RECOMMENDED AMPLIFIER OUTPUT

20 – 120 W

SENSITIVITY

88 dB

CROSSOVER

■ Amplitude- and phase-optimised crossover

CABINET SURFACE

Black
Walnut

DIMENSIONS (WxHxD)

149 x 250 x 190 mm

WEIGHT

2.5 kg

ART.NO. /EAN

Black: D144800P / 4018843448008
Walnut: D144801P / 4018843144801



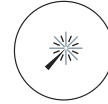
LIGHT WEIGHT
DOME



FE DRIVER
DYNAMICS



FERROFLUID
COOLED



KLIPPEL
OPTIMIERT



ENGINEERED
IN GERMANY



APOC



TECHNICAL DETAILS

MONITOR S14 C

Center channel, 2 ½-way bass reflex
Extremely powerful and large center speaker with double bass and bass-midrange

DRIVERS

2 x 4.5" woofer
2 x 4.5" woofer-midrange
1 x 1.1" dome tweeter

POWER HANDLING (RMS/MAX)

100/200 W

IMPEDANCE

4 – 8 Ohms

FREQUENCY RESPONSE

38 – 38.000 Hz

CROSSOVER FREQUENCIES

500 Hz, 2.700 Hz

RECOMMENDED AMPLIFIER OUTPUT

30 – 200 W

SENSITIVITY

90 dB

CROSSOVER

- Amplitude- and phase-optimised crossover
- Connecting terminal with gold-plated and encapsulated screw terminals

CABINET SURFACE

Black
Walnut

DIMENSIONS (WxHxD)

700 x 150 x 190 mm

WEIGHT

7 kg

ART.NO. /EAN

Black: D144810 / 4018843448107

Walnut: D144811 / 4018843448114



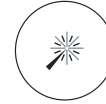
FMAX
TWEETER



FE DRIVER
DYNAMICS



FERROFLUID
COOLED



KLIPPEL
OPTIMIERT



ENGINEERED
IN GERMANY



APOC



TECHNICAL DETAILS

MONITOR S12 C

Center channel, 2-way bass reflex
Compact center speaker for every home cinema

DRIVERS

2 x 4.5" woofer-midrange
1 x 1/2" dome-tweeter

POWER HANDLING (RMS/MAX)

75/150 W

IMPEDANCE

4 – 8 Ohms

FREQUENCY RESPONSE

40 – 32.000 Hz

CROSSOVER FREQUENCIES

3.400 Hz

RECOMMENDED AMPLIFIER OUTPUT

20 – 150 W

SENSITIVITY

89 dB

CROSSOVER

- Amplitude- and phase-optimised crossover
- Connecting terminal with gold-plated and encapsulated screw terminals

CABINET SURFACE

Black
Walnut

DIMENSIONS (WxHxD)

420 x 148 x 190 mm

WEIGHT

3.9 kg

ART.NO. /EAN

Black: D144808 / 4018843448084

Walnut: D144809 / 4018843448091



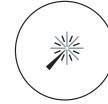
LIGHT WEIGHT
DOME



FE DRIVER
DYNAMICS



FERROFLUID
COOLED



KLIPPEL
OPTIMIERT



ENGINEERED
IN GERMANY



APOC

