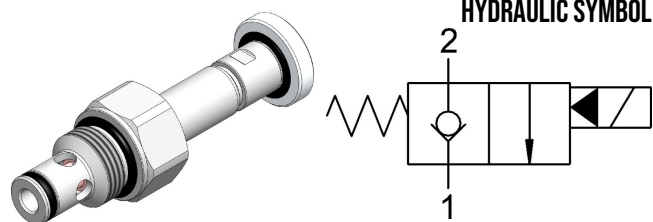


SVSO.M18 VALVE SERIES

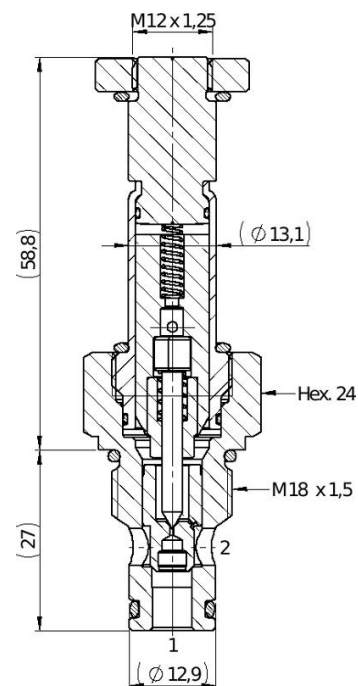
METRIC Cartridge - 350 bar
NC Single Lock Pilot Operated
Poppet type



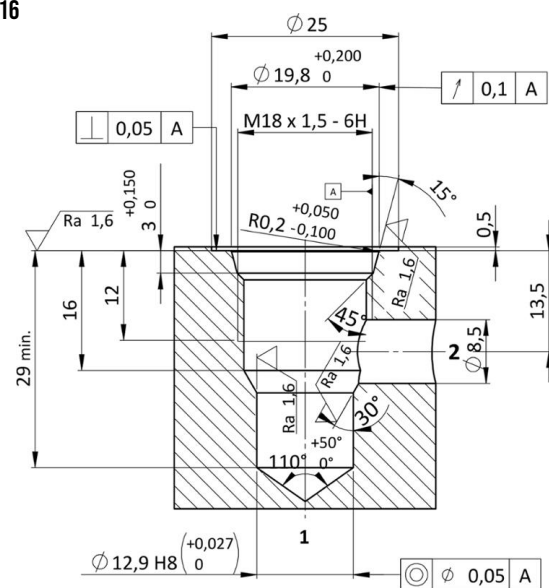
DESCRIPTION

A solenoid valve operated, 2-way 2-positions, normally closed, piloted poppet type, screw-in cartridge valve. Typically used as a blocking or load holding device for high pressure circuits. When the coil is de-energized, the SVSO.M18 acts as check valve allowing free flow from 1 to 2, while blocking from 2 to 1. When the coil is energized the poppet lifts and opens the 2 to 1 flow path. In this operation mode, flow from 1 to 2 is severely restricted. The rigid design using a 1-piece body contributes to minimize the effect of eccentricities in cavity and provides great reliability. Low pressure drop thanks to optimized flow path.

CROSS SECTION



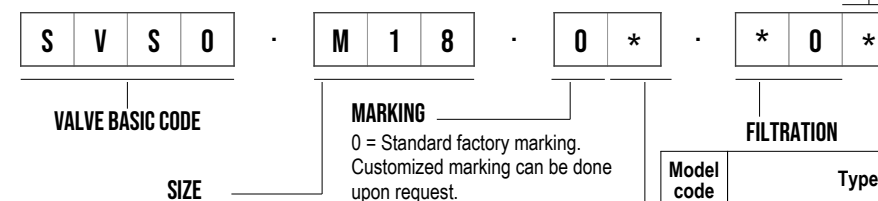
CAVITY VH116



TECHNICAL DATA

MAXIMUM OPERATING PRESSURE	350 bar
MAXIMUM FLOW	40 l/min
MAXIMUM INTERNAL LEAKAGE	0,25 cm ³ / min @ 350 bar
EXTERNAL COMPONENT TREATMENT	Zn/Fe - standard (96h) Zn/Ni (720h) (Upon customer request)
SWITCH ON TIME	30 ms
SWITCH OFF TIME	50 ms
O-RING TEMPERATURE RANGE	-30° C to 110° C (standard sealing NBR - BUNA - N) -35° C to 140° C (HNBR - Upon customer request) -23° C to 225° C (FKM - Upon customer request)
OIL TEMPERATURE RANGE	-30° C to 110° C
FLUIDS	Mineral - based or synthetics with lubricating properties
VISCOSITIES	7,4 to 420 cSt
MINIMUM PULL-IN VOLTAGE	85% of nominal
FILTRATION	20/18/15 ISO 4406 (maximum filtration admitted)
ORIENTATION	No restrictions
INSTALLATION TORQUE	40-45 Nm Hex.24
TECH. SPEC. FOR CHARACTERIZATION	see page
OIL TESTING CONDITIONS	ISO VG 46 cSt
SEAL KIT CODE	SK.134 and SK.027 (coil) (standard sealing NBR-BUNA-N)
COIL	18W (for more details see page XXX)
WEIGHT	0,110 kg

ORDERING CODE



Code	Other available options
S08	3/4-16 UNF with Ø12,7 nose size
S09	3/4-16 UNF with Ø15,86 nose size
M18	METRIC M18x1,5 with Ø12,9 nose size
M20	METRIC M20x1,5 with Ø15 nose size

MANUAL OVERRIDE

Model code	Type of override
0	No override
1	Screw
2	Push and Twist
6	Pull and Hold
9	Pull and Hold with screw 10-32 UNF
A	Pull and Hold with screw M8 (max. operating pressure: 300 bar)

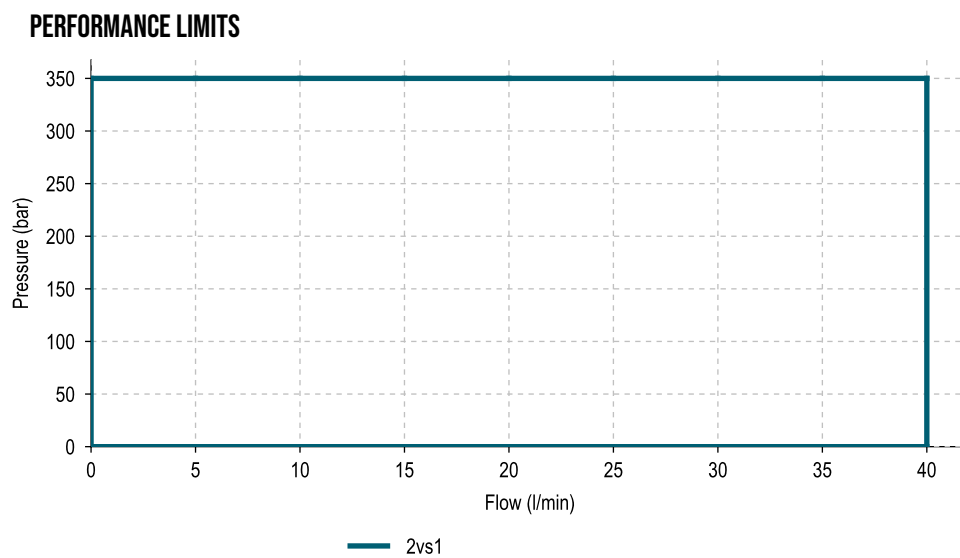
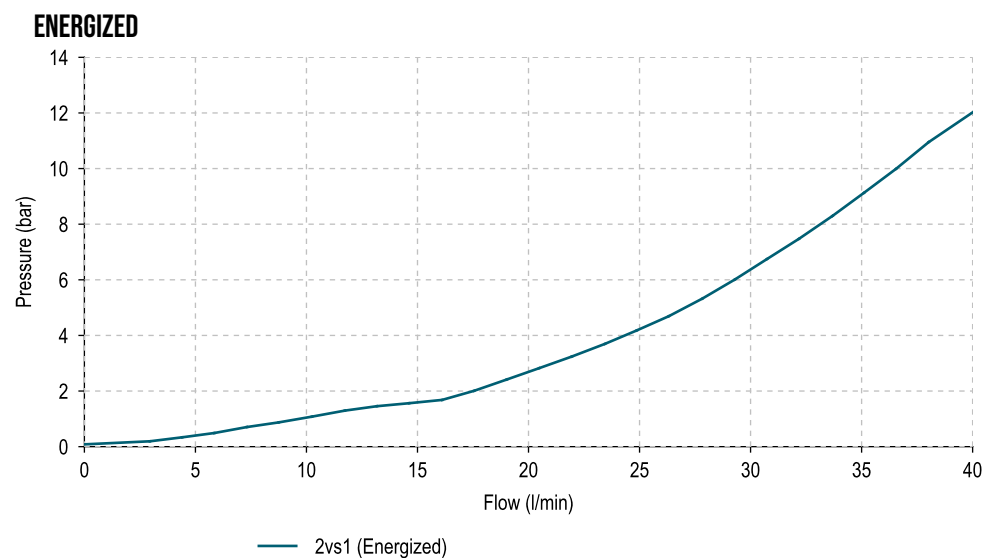
NOTE
Customized nut can be selected

Model code	Type of filter
F	Standard filter (mesh size 280 µm)
N	No filter

NOTE
Customized filters can be done upon request.

SVSO.M18 GRAPHS

The performance chart illustrates flow handling capacity 2 to 1 (energized).
p,Q curve is recorded at Toil = 40°C and 46 cSt.



NOTE

The performance chart illustrates flow handling capacity 2 to 1 (energized).
p,Q curve is recorded at Toil = 40°C and 46 cSt.