



CONNECTORS

TRI-CLAMP FITTINGS

Clamp Elbow 45°	36
Clamp Elbow 90°	37
Clamp T-Piece, equal	38
Clamp T-Piece, short Outlet	39
Concentric Clamp Reducer	40
Reduced TC-Adapter, concentric	41
Reduced TC-Adapter, Excentric	42
TC-Interior Thread-Adapter	43
TC-External Thread-Adapter	44



TRI-CLAMP FITTINGS

Clamp Elbow 45°

Product group:	Tri-Clamp Fittings
Description:	Clamp Elbow 45°
Valid standards:	45° Elbow acc. DIN 11865, TC acc. DIN 32676, ASME BPE 2009
Material:	Stnr.-W. 1.4435 BN2 (Fe < 0.5%) acc. EN 10088, welding seam Fe < 1%
Permissible sterilization temperature:	150°C
Version / Surface quality:	Surface, internal: sanded and polished. Ra, internal < 0.6 µm Elbow surface, external bright finish. Welding seam: Annealing color removed.
Pipe-Hygiene Classes:	H 3 acc. DIN 11866
Marking:	Size, material number, melt number, manufacturer code
Certificates:	Certificate acc. EN 10204-3.1
Tolerances:	Measurements x / y: +/- 2 mm
Option:	Electropolishing. Further dimensions available on request.
Remarks:	Technical contents are subject to change

Dimensions for Clamp Elbow 45°								
Sizes	A	AD	ID	MR	X	Y	Item No.	
acc. DIN 32676 Series B, ISO 1127								
ISO DN 8	25.0	13.5	10.3	20.0	43.7	105.5	252.145.008	
ISO DN 10	25.0	17.2	14.0	28.0	46.0	111.1	252.145.010	
ISO DN 15	50.5	21.3	18.1	28.0	41.7	100.7	252.145.015	
ISO DN 20	50.5	26.9	23.7	28.5	51.9	125.3	252.145.020	
ISO DN 25	50.5	33.7	29.7	38.0	54.7	132.0	252.145.025	
ISO DN 32	64.0	42.4	38.4	47.5	57.5	138.8	252.145.032	
ISO DN 40	64.0	48.3	44.3	57.0	60.2	145.4	252.145.040	
ISO DN 50	77.5	60.3	56.3	76.0	65.8	158.9	252.145.050	
ISO DN 65	91.0	76.1	72.1	95.0	82.0	198.0	252.145.065	
acc. DIN 32676 Series C, ASME BPE 2009								
OD 1/2"	25.0	12.70	9.40	27.0	60.6	146.3	252.105.025	
OD 3/4"	25.0	19.05	15.75	26.0	60.6	146.3	252.107.025	
OD 1"	50.5	25.40	22.10	38.1	55.7	134.5	252.110.050	
OD 1 1/2"	50.5	38.10	34.80	57.2	60.2	145.3	252.115.050	
OD 2"	64.0	50.80	47.50	76.2	69.2	167.0	252.120.064	
OD 2 1/2"	77.5	63.50	60.20	95.3	75.9	183.2	252.125.077	
OD 3"	91.0	76.20	72.90	114.3	80.4	194.1	252.130.091	
OD 4"	119.0	101.60	97.40	152.4	96.1	232.0	252.140.119	

TRI-CLAMP FITTINGS

Clamp Elbow 90°

Product group:	Tri-Clamp Fittings
Description:	Clamp Elbow 90°
Valid standards:	90° Elbow acc. DIN 11865, TC acc. DIN 32676, ASME BPE 2009
Material:	Stnr.-W. 1.4435 BN2 (Fe < 0.5%) acc. EN 10088, welding seam Fe < 1%
Permissible sterilization temperature:	150°C
Version / Surface quality:	Surface, internal: sanded and polished. Ra, internal < 0.6 µm Elbow surface, external bright finish. Welding seam: Annealing color removed.
Pipe-Hygiene Classes:	H 3 acc. DIN 11866
Marking:	Size, material number, melt number, manufacturer code
Certificates:	Certificate acc. EN 10204-3.1
Tolerances:	Measurements Z: +/- 2 mm
Option:	Electropolishing
Remarks:	Technical contents are subject to change

Dimension for Clamp Elbow 90°						
Sizes	A	AD	ID	Z	Item No.	
acc. DIN 32676 Series B, ISO 1127						
ISO DN 6	25.0	10.2	7.0	43.1	**252.050.006	
ISO DN 8	50.5	13.5	10.3	66.6	252.050.008	
ISO DN 10	50.5	17.2	14.0	74.6	252.050.010	
ISO DN 15	50.5	21.3	18.1	76.6	252.045.015	
ISO DN 20	50.5	26.9	23.7	90.1	252.045.020	
ISO DN 25	50.5	33.7	29.7	99.6	252.045.025	
ISO DN 32	64.0	42.4	38.4	109.1	252.045.032	
ISO DN 40	64.0	48.3	44.3	118.6	252.045.040	
ISO DN 50	77.5	60.3	56.3	137.6	252.045.050	
ISO DN 65	91.0	76.1	72.1	171.6	252.045.065	
acc. DIN 32676 Series C, ASME BPE 2009						
OD 1/2"	25.0	12.70	9.40	104.7	252.005.025	
OD 3/4"	25.0	19.05	15.75	104.7	252.007.025	
OD 1"	50.5	25.40	22.10	97.8	252.010.050	
OD 1 1/2"	50.5	38.10	34.80	116.9	252.015.050	
OD 2"	64.0	50.80	47.50	142.3	252.020.064	
OD 2 1/2"	77.5	63.50	60.20	161.4	252.025.077	
OD 3"	91.0	76.20	72.90	180.4	252.030.091	
OD 4"	119.0	101.60	97.40	224.8	252.040.119	
**90° Elbow is made from solid material						

All lengths in millimeters (if not specified differently).

Clamp T-Piece, equal

Product group:	Tri-Clamp Fittings
Description:	Clamp T-Piece, equal
Valid standards:	T-Piece acc. DIN 11865, TC acc. DIN 32676, ASME BPE 2009
Material:	Stnr.-W. 1.4435 BN2 acc. EN 10088, welding seam Fe < 1%
Permissible sterilization temperature:	150°C
Version / Surface quality:	Surface, internal: sanded and polished. Ra, internal < 0.6 µm T-Piece surface outside: bright finish. Welding seam: Annealing color removed.
Pipe-Hygiene Classes:	H 3 acc. DIN 11866
Marking:	Size, material number, melt number, manufacturer code
Certificates:	Certificate acc. EN 10204-3.1
Tolerances:	Measurements L1= +/- 2 mm
Option:	Electropolishing
Remarks:	Technical contents are subject to change

Dimensions for Clamp T-Piece, equal						
Sizes	A	AD	ID	L1	Item No.	
acc. DIN 32676 Series B, ISO 1127						
ISO DN 6	25.0	10.2	7.0	36.5	**253.050.006	
ISO DN 8	25.0	13.5	10.2	60.5	253.050.008	
ISO DN 10	25.0	17.2	15.0	62.5	253.050.010	
ISO DN 10	50.5	17.2	14.0	55.6	253.100.010	
ISO DN 15	50.5	21.3	18.1	57.6	253.045.015	
ISO DN 20	50.5	26.9	23.7	76.6	253.045.020	
ISO DN 25	50.5	33.7	29.7	81.6	253.045.025	
ISO DN 32	64.0	42.4	38.4	86.6	253.045.032	
ISO DN 40	64.0	48.3	44.3	86.6	253.045.040	
ISO DN 50	77.5	60.3	56.3	111.6	253.045.050	
ISO DN 65	91.0	76.1	72.1	131.6	253.045.065	
ISO DN 80	106.0	88.9	84.3	151.6	253.045.080	
ISO DN 100	130.0	114.3	109.7	181.6	253.045.100	
acc. DIN 32676 Series C, ASME BPE 2009						
OD 1/2"	25.0	12.70	9.40	76.1	253.005.025	
OD 3/4"	25.0	19.05	15.75	79.3	253.007.025	
OD 1"	50.5	25.40	22.10	75.6	253.010.050	
OD 1 1/2"	50.5	38.10	34.80	81.9	253.015.050	
OD 2"	64.0	50.80	47.50	94.6	253.020.064	
OD 2 1/2"	77.5	63.50	60.20	101.0	253.025.077	
OD 3"	91.0	76.20	72.90	107.3	253.030.091	
OD 4"	119.0	101.60	97.40	126.4	253.040.119	

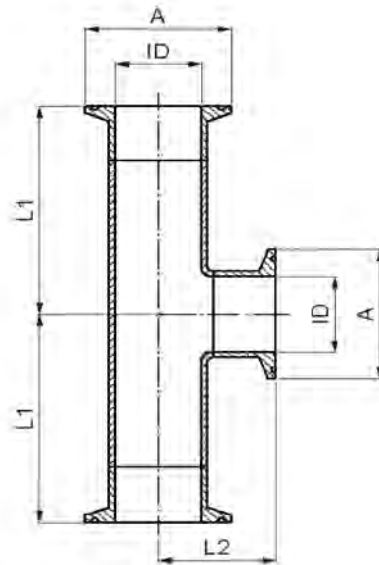
**made from solid material

TRI-CLAMP FITTINGS

Clamp T-Piece, short Outlet

Product group:	Tri-Clamp Fittings
Description:	Clamp T-Piece, short Outlet
Valid standards:	T-Piece acc. DIN 11865, TC acc. ISO 2852 / BS 4825
Material:	Stnr.-W. 1.4435 BN2 acc. EN 10088, welding seam Fe < 1%
Permissible sterilization temperature:	150°C
Version / Surface quality:	Surface, internal: sanded and polished. Ra, internal < 0.6 µm T-Piece surface outside: bright finish. Welding seam: Annealing color removed.
Pipe-Hygiene Classes:	H 3 acc. DIN 11866
Marking:	Size, material number, melt number, manufacturer code
Certificates:	Certificate acc. EN 10204-3.1
Tolerances:	Measurements L1 / L2: +/- 2 mm
Option:	Electropolishing
Remarks:	Technical contents are subject to change

Dimensions for T-Piece, short branch							
Sizes	A	AD	ID	L1	L2	Item No.	
acc. ISO 2852 / ISO 1127							
ISO DN 8	8	25.0	13.5	10.3	60.5	39.9	253.145.008
ISO DN 10	10	25.0	17.2	14.0	62.5	39.9	253.145.010
ISO DN 15	15	50.5	21.3	18.1	57.6	33.8	253.145.015
ISO DN 20	20	50.5	26.9	23.7	76.6	37.1	253.145.020
ISO DN 25	25	50.5	33.7	29.7	81.6	40.5	253.145.025
ISO DN 32	32	64.0	42.4	38.4	86.6	45.3	253.145.032
ISO DN 40	40	64.0	48.3	44.3	86.6	48.8	253.145.040
ISO DN 50	50	77.5	60.3	56.3	111.6	55.8	253.145.050
ISO DN 65	65	91.0	76.1	72.1	131.6	64.7	253.145.065
acc. BS 4825 / ASME BPE 2009							
OD 1/2"	1/2"	25.0	12.70	9.40	76.1	39.9	253.105.025
OD 3/4"	3/4"	25.0	19.05	15.75	79.3	39.5	253.107.025
OD 1"	1"	50.5	25.40	22.10	75.6	35.8	253.110.050
OD 1 1/2"	1 1/2"	50.5	38.10	34.80	81.9	42.2	253.115.050
OD 2"	2"	64.0	50.80	47.50	94.6	50.0	253.120.064
OD 2 1/2"	2 1/2"	77.5	63.50	60.20	101.0	57.4	253.125.077
OD *3"	*3"	91.0	76.20	72.90	107.3	64.7	253.130.091
OD 4"	4"	119.0	101.60	97.40	126.4	77.4	253.140.119



All lengths in millimeters (if not specified differently).

Connectors Verbindungstechnik AG, Zürcherstrasse 53, CH-8317 Tagelswangen, Phone: +41 (0)52 354 68 68, Telefax: +41 (0)52 354 68 60
Catalogue Sterile Components Version CS004, Printed 07/2014, Version 2. More information: www.connectors.ch or email: info@connectors.ch

Concentric Clamp Reducer

Product group:	Tri-Clamp Fittings
Description:	Concentric Clamp Reducer
Valid standards:	DIN 32676 Series B with pipe ends acc. ISO 1127 DIN 32676 Series C with pipe ends acc. ASME BPE 2009
Material:	Stnr.-W. 1.4435 BN2 (Fe < 0.5%) acc. EN 10088
Permissible sterilization temperature:	150°C
Version / Surface quality:	Surface, internal and external bright finish. Weld-on ends for orbital-welding. Ra, internal < 0.4 µm.
Pipe-Hygiene Classes:	H 3 / H 4 acc. DIN 11866
Marking:	Size, material number, melt number, manufacturer code
Certificates:	Certificate acc. EN 10204-3.1
Option:	Electropolishing. Other dimensions on request.
Remarks:	Technical contents are subject to change

Dimensions for Concentric Clamp Reducer						
Sizes	A	ID	ad	id	L	Item No.
acc. DIN 32676 Series B (ISO 1127) / DIN 32676 Series C (ASME BPE 2009)						
ISO DN 15 / 8	50.5	18.1	13.5	10.3	35.0	257.181.135
ISO DN 20 / 10	50.5	23.7	17.2	14.0	35.0	257.237.172
ISO DN 25 / 10	50.5	29.7	21.3	18.1	35.0	257.297.213
BS 1-1/2" / 1"	50.5	34.8	25.4	22.1	35.0	257.344.254
ISO DN *15 / 8	64.0	18.1	13.5	10.3	35.0	257.064.135
ISO DN *20 / 10	64.0	23.7	17.2	14.0	35.0	257.004.172

The drawing shows a cross-section of the concentric clamp reducer. Dimension A is the total height of the fitting. ID is the inner diameter of the larger pipe section. ad is the outer diameter of the smaller pipe section. id is the inner diameter of the smaller pipe section. L is the length of the central cylindrical section.

Reduced TC-Adapter, concentric

Product group:	Tri-Clamp Fittings
Description:	Reduced TC-Adapter, concentric
Valid standards:	ISO 2852 / ISO 1127 to DIN 32676 / DIN 11850, *non-standard
Material:	1) Stnr.-W. 1.4435 BN2 (Fe < 0.5%) acc. EN 10088 2) AISI 316L (1.4404)
Permissible sterilization temperature:	150°C
Version / Surface quality:	1) Surface, internal and external bright finish. Ra, internal < 0.4 µm 2) Surface, internal and external bright finish. Ra, internal < 0.5 µm
Pipe-Hygiene Classes:	H 3 / H 4 acc. DIN 11866
Marking:	Size, material number, melt number, manufacturer code
Certificates:	Certificate acc. EN 10204-3.1
Option:	Electropolishing. Further dimensions available on request.
Remarks:	Technical contents are subject to change

Dimensions for Reduced TC-Adapter								
Sizes	A	a	ID	id	L	Item No.		
acc. ISO 2852 to DIN 32676 1)								
ISO 15 / DIN 8	50.5	25.0	18.1	8.0	30.0	225.181.008		
DIN 20 / DIN 15	50.5	25.0	23.0	16.0	30.0	225.230.016		
DIN *20 / ISO 8	64.0	25.0	23.0	10.3	30.0	225.230.010		
DIN *20 / DIN 15	64.0	25.0	23.0	16.0	30.0	225.023.016		
DIN *40 / DIN 15	64.0	25.0	44.0	16.0	30.0	225.440.016		
acc. DIN 32676 Series C (ASME BPE 2009) 2)								
OD 3/4" / 1/2"	25.0	25.0	15.8	9.4	40.0	255.007.005.		
OD 1" / 1/2"	50.5	25.0	22.1	9.4	40.0	255.010.005.		
OD 1" / 3/4"	50.5	25.0	22.1	15.8	40.0	255.010.007.		
OD 1 1/2" / 1/2"	50.5	25.0	34.8	9.4	40.0	255.015.005.		
OD 1 1/2" / 3/4"	50.5	25.0	34.8	15.8	40.0	255.015.007.		
OD 1 1/2" / 1"	50.5	50.5	34.8	22.1	40.0	255.015.010.		
OD 2" / 1/2"	64.0	25.0	47.5	9.4	60.0	255.020.005.		
OD 2" / 3/4"	64.0	25.0	47.5	15.8	60.0	255.020.007.		
OD 2" / 1"	64.0	50.5	47.5	22.1	45.0	255.020.010.		
OD 2" / 1 1/2"	64.0	50.5	47.5	34.8	45.0	255.020.015.		
OD 2 1/2" / 1/2"	77.5	25.0	60.2	9.4	60.0	255.025.005.		
OD 2 1/2" / 3/4"	77.5	25.0	60.2	15.8	60.0	255.025.007.		
OD 2 1/2" / 1"	77.5	50.5	60.2	22.1	45.0	255.025.010.		
OD 2 1/2" / 1 1/2"	77.5	50.5	60.2	34.8	45.0	255.025.015.		
OD 2 1/2" / 2"	77.5	64.0	60.2	47.5	45.0	255.025.020.		
OD 3" / 1"	91.0	50.5	72.9	22.1	60.0	255.030.010.		
OD 3" / 1 1/2"	91.0	50.5	72.9	34.8	60.0	255.030.015.		
OD 3" / 2"	91.0	64.0	72.9	47.5	60.0	255.030.020.		
OD 3" / 2 1/2"	91.0	77.5	72.9	60.2	60.0	255.030.025.		

All lengths in millimeters (if not specified differently).

Reduced TC-Adapter, Excentric

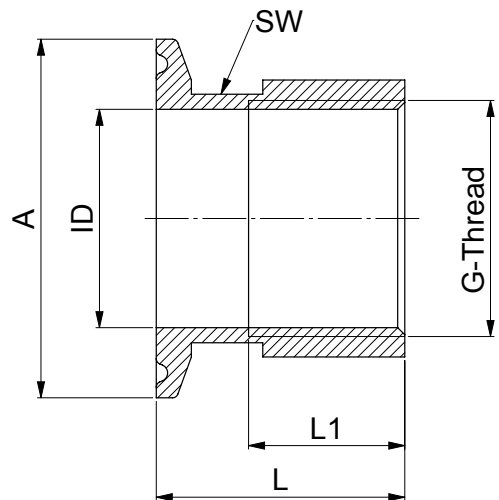
Product group:	Tri-Clamp Fittings
Description:	Reduced TC-Adapter, excentric
Valid standards:	DIN 32676 Series C (ASME BPE 2009)
Material:	AISI 316L (1.4404)
Permissible sterilization temperature:	150°C
Version / Surface quality:	Surface, internal and external bright finish. Ra, internal < 0.5 µm
Pipe-Hygiene Classes:	H 3 / H 4 acc. DIN 11866
Marking:	Size, material number, melt number, manufacturer code
Certificates:	Certificate acc. EN 10204-3.1
Option:	Electropolishing. Further dimensions available on request.
Remarks:	Technical contents are subject to change

Dimensions for Reduced TC-Adapter							
Sizes	A	a	ID	id	L	Item No.	
acc. DIN 32676 Series C (ASME BPE 2009)							
OD 3/4" / 1/2"	25.0	25.0	15.8	9.4	40.0	256.007.005.	
OD 1" / 1/2"	50.5	25.0	22.1	9.4	40.0	256.010.005.	
OD 1" / 3/4"	50.5	25.0	22.1	15.8	40.0	256.010.007.	
OD 1 1/2" / 1/2"	50.5	25.0	34.8	9.4	40.0	256.015.005.	
OD 1 1/2" / 3/4"	50.5	25.0	34.8	15.8	40.0	256.015.007.	
OD 1 1/2" / 1"	50.5	50.5	34.8	22.1	40.0	255.015.010.	
OD 2" / 1/2"	64.0	25.0	47.5	9.4	50.0	256.020.005.	
OD 2" / 3/4"	64.0	25.0	47.5	15.8	50.0	256.020.007.	
OD 2" / 1"	64.0	50.5	47.5	22.1	50.0	256.020.010.	
OD 2" / 1 1/2"	64.0	50.5	47.5	34.8	50.0	256.020.015.	
OD 2 1/2" / 1/2"	77.5	25.0	60.2	9.4	190.0	256.025.005.	
OD 2 1/2" / 3/4"	77.5	25.0	60.2	15.8	190.0	256.025.007.	
OD 2 1/2" / 1"	77.5	50.5	60.2	22.1	127.0	256.025.010.	
OD 2 1/2" / 1 1/2"	77.5	50.5	60.2	34.8	178.0	256.025.015.	
OD 2 1/2" / 2"	77.5	64.0	60.2	47.5	178.0	256.025.020.	
OD 3" / 1"	91.0	50.5	72.9	22.1	229.0	256.030.010.	
OD 3" / 1 1/2"	91.0	50.5	72.9	34.8	178.0	256.030.015.	
OD 3" / 2"	91.0	64.0	72.9	47.5	127.0	256.030.020.	
OD 3" / 2 1/2"	91.0	77.5	72.9	60.2	76.0	256.030.025.	

TC-Interior Thread-Adapter

Product group:	Tri-Clamp Fittings
Description:	TC-Interior Thread-Adapter
Valid standards:	TC acc. DIN 32676, Thread acc. ISO 228-1
Material:	Stnr.-W. 1.4435 BN2 (Fe < 0.5%) acc. EN 10088
Permissible sterilization temperature:	150°C
Version / Surface quality:	Surface external Ra < 0.8 µm Surface, internal: Ra < 0.4 µm (ID 9.0 mm = Ra < 0.6 µm)
Pipe-Hygiene Classes:	H 3 / H 4 acc. DIN 11866
Marking:	Material number, melt number, manufacturer code, threading size
Certificates:	Certificate acc. EN 10204-3.1
Option:	Electropolishing. Upon request, transition facets can be turned
Remarks:	Technical contents are subject to change

Dimensions for TC-Interior Thread-Adapter							
Sizes	G	L1	A	ID	L	SW	Item No.
TC acc. DIN 32676, Thread acc. ISO 228-1							
IG 05	1/8"	12.0	25.0	8.6	30.0	17	263.005.025
IG 1	1/8"	12.0	50.5	8.6	30.0	24	263.010.050
IG 05	1/4"	12.0	25.0	11.5	30.0	17	263.007.025
IG 2	1/4"	12.0	50.5	11.5	30.0	24	263.020.050
IG 2	1/4"	12.0	64.0	11.5	30.0	24	263.020.064
IG 3	3/8"	12.0	25.0	12.0	30.0	17	263.030.025
IG 3	3/8"	12.0	50.5	15.0	30.0	24	263.030.050
IG 3	1/2"	14.0	34.0	18.6	30.0	24	263.030.034
IG 3	1/2"	14.0	50.5	18.6	30.0	24	263.030.070
IG 4	3/4"	14.5	50.5	24.1	30.0	34	263.040.050
IG 5	1"	22.0	50.5	30.3	35.0	34	263.050.050
IG 5	1"	17.0	64.0	30.3	35.0	34	263.050.064
IG 6	1-1/4"	17.0	64.0	39.0	35.0	46	263.064.050
IG 7	1-1/2"	20.0	64.0	44.8	40.0	50	263.038.064
IG 8	2"	25.0	77.5	56.5	40.0	65	263.070.077



All lengths in millimeters (if not specified differently).

TC-External Thread-Adapter

Product group:	Tri-Clamp Fittings
Description:	TC-External Thread-Adapter
Valid standards:	TC acc. DIN 32676, Thread acc. ISO 228-1
Material:	Stnr.-W. 1.4435 BN2 (Fe < 0.5%) acc. EN 10088
Permissible sterilization temperature:	150°C
Version / Surface quality:	Surface external Ra, external < 0.8 µm Surface, internal: Ra, internal < 0.4 µm (ID ≤ 9.0 mm = Ra < 0.6 µm)
Pipe-Hygiene Classes:	H 3 / H 4 acc. DIN 11866
Marking:	Material number, melt number, manufacturer code, threading size
Certificates:	Certificate acc. EN 10204-3.1
Option:	Electropolishing Upon request, transition facets can be turned
Remarks:	Technical contents are subject to change

Dimensions for TC-External Thread-Adapter							
Sizes	G	L1	A	ID	L	SW	Item No.
TC acc. DIN 32676, Thread acc. ISO 228-1							
AG 05	1/8"	10.0	25.0	5.6	30.0	12	265.010.025
AG 1	1/8"	10.0	50.5	5.6	30.0	12	265.010.050
AG 05	1/4"	10.0	25.0	8.6	30.0	17	265.005.025
AG 2	1/4"	10.0	50.5	8.6	30.0	17	265.020.050
AG 3	3/8"	12.0	25.0	12.1	30.0	17	265.030.025
AG 3	3/8"	12.0	50.5	12.1	30.0	17	265.030.050
AG 3	1/2"	13.0	50.5	15.8	30.0	22	265.030.070
AG 3	1/2"	13.0	64.0	15.8	30.0	22	265.030.064
AG 4	3/4"	18.0	50.5	21.7	35.0	27	265.040.050
AG 4	3/4"	18.0	64.0	21.7	35.0	27	265.040.064
AG 5	1"	21.0	50.5	26.8	41.0	34	265.050.050
AG 6	1-1/4"	20.0	50.5	35.5	35.0	38	265.060.050
AG 7	1-1/2"	22.0	50.5	34.8	40.0	41	265.038.050
AG 8	2"	20.0	77.5	47.5	40.0	60	265.070.077

