



CONNECTORS

WELDING-FITTINGS

Pipes acc. DIN 11866	46
Pipes acc. DIN 11866	47
Elbow equal sided 45°	48
Elbow equal sided 45°	49
Elbow equal sided 90°	50
Elbow equal sided 90°	51
Elbow equal sided 90° (from solid material)	52
T-Piece, equal	53
T-Piece, equal	54
T-Piece, equal	55
T-Piece, equal	56
T-Piece, equal (from solid material)	57
Cross-Piece, equal (from solid material)	58
Concentric Reducer	59
Concentric Reducer	60
Concentric Reducer	61
Excentric Reducer	62
Excentric Reducer	63
Excentric Reducer	64
Inline Sight Glass	65
Inline Sight Glass	66



Pipes acc. DIN 11866 Series B

Product group:	Welding-Fittings
Description:	Pipes acc. DIN 11866
Valid standards:	DIN 11866 Series B
Material:	Seamless or welded austenite stainless-steel pipe Strn.-W. 1.4435 BN2 (Fe < 0.5%) acc. EN 10088-1
Permissible sterilization temperature:	150°C
Version / Surface quality:	Surface, internal and external bright finish. Weld-on ends for orbital-welding Bright finish: Ra, internal < 0.4 µm, Ra, external < 0.8 µm Electropolishing: Ra, internal < 0.6 µm, Ra, external < 0.8 µm
Pipe-Hygiene Classes:	H 3 acc. DIN 11866 *H4 (Ra < 0.4µm), *H5 (Ra < 0.25µm) / *available on request
Tolerance:	acc. DIN EN 11127 / ISO 5252 D4/T3 and ASTM A269 / A270
Marking:	Size, material number, melt number, manufacturer code
Certificates:	Certificate acc. EN 10204-3.1
Remarks:	Pipes according to DIN 11866, Series A (DIN 11850), available on request Technical contents are subject to change

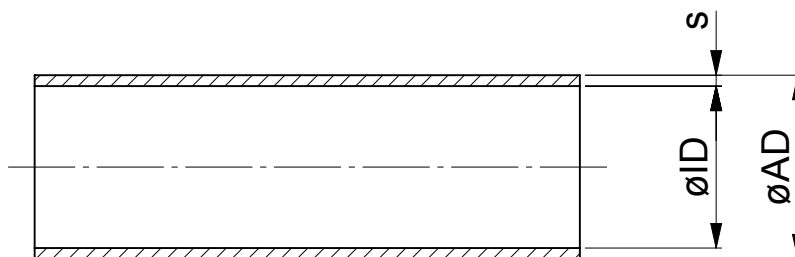
Dimensions for pipes acc. DIN 11866, Series B (ISO 1127)							
Standard Length: 6 meters							
Sizes	ø AD	ø ID	S	Weight kg / m	Item No. Bright finish	Item No. Electropolishing	
acc. DIN 11866, Series B							
ISO DN 8	13.5	10.3	1.6	0.477	258.135.103.MB	258.135.103	
ISO DN 10	17.2	14.0	1.6	0.626	258.172.140.MB	258.172.140	
ISO DN 15	21.3	18.1	1.6	0.790	258.213.181.MB	258.213.181	
ISO DN 20	26.9	23.7	1.6	1.015	258.269.237.MB	258.269.237	
ISO DN 25	33.7	29.7	2.0	1.589	258.337.297.MB	258.337.297	
ISO DN 32	42.4	38.4	2.0	2.026	258.424.384.MB	258.424.384	
ISO DN 40	48.3	44.3	2.0	2.322	258.483.443.MB	258.483.443	
ISO DN 50	60.3	56.3	2.0	2.923	258.603.560.MB	258.603.560	
ISO DN 65	76.1	72.1	2.0	3.715	258.761.721.MB	258.761.721	
ISO DN 80	88.9	84.3	2.3	4.993	258.889.843.MB	258.889.843	
ISO DN 100	114.3	109.7	2.3	6.458	258.114.109.MB	258.114.109	
ISO DN 150	168.3	163.1	2.6	10.800	258.168.163.MB	258.168.163	
ISO DN 200	219.1	213.9	2.6	14.112	258.219.213.MB	258.219.213	

The diagram shows a cross-section of a pipe. The wall thickness is labeled 's'. The inner diameter is labeled 'øID' and the outer diameter is labeled 'øAD'. The drawing uses hatching to indicate the pipe's profile.

Pipes acc. DIN 11866 Series C

Product group:	Welding-Fittings
Description:	Pipes acc. DIN 11866
Valid standards:	acc. DIN 11866 Series C (ASME BPE 2009)
Material:	Seamless or welded austenite stainless-steel pipe Strn.-W. 1.4435 BN2 (Fe < 0.5%) acc. EN 10088-1
Permissible sterilization temperature:	150°C
Version / Surface quality:	Right-angled welding ends, prepared for orbital welding Bright finish: Ra, internal < 0.4 µm, Ra, external < 0.8 m Electropolishing: Ra, internal < 0.6 µm, Ra, external < 0.8 m
Pipe-Hygiene Classes:	H 3 acc. DIN 11866 *H4 (Ra < 0.4 µm), *H5 (Ra < 0.25 µm) / *available on request
Tolerance:	acc. ISO 5252 D4/T3 and ASTM A269 / A270
Marking:	Size, material number, melt number, manufacturer code
Certificates:	Certificate acc. EN 10204-3.1
Remarks:	Pipes acc. DIN 11866, Series A (DIN 11850) available on request. Technical contents are subject to change

Dimensions for pipes acc. DIN 11866, Series C (ASME BPE 2009)							
Standard Length: 6 meters							
Sizes	ø AD	ø ID	S	Weight kg / m	Item No. Bright finish	Item No. Electropolishing	
acc. DIN 11866 Series C (ASME BPE 2009)							
OD 1/8"	3.18	2.06	0.56	0.036	258.318.206.MB	258.318.206	
OD 1/4"	6.35	4.37	0.89	0.124	258.063.045.MB	258.063.045	
OD 3/8"	9.53	7.55	0.89	0.196	258.953.775.MB	258.953.775	
OD 1/2"	12.70	9.40	1.65	0.457	258.127.094.MB	258.127.094	
OD 3/4"	19.05	15.75	1.65	0.720	258.195.157.MB	258.195.157	
OD 1"	25.40	22.10	1.65	0.982	258.254.221.MB	258.254.221	
OD 1 1/2"	38.10	34.80	1.65	1.507	258.381.348.MB	258.381.348	
OD 2"	50.80	47.50	1.65	2.033	258.508.475.MB	258.508.475	
OD 2 1/2"	63.50	60.20	1.65	2.559	258.635.602.MB	258.635.602	
OD 3"	76.20	72.90	1.65	3.083	258.761.719.MB	258.761.719	
OD 4"	101.60	97.38	2.11	5.262	258.101.974.MB	258.101.974	
OD 6"	152.40	146.86	2.77	10.390	258.152.146.MB	258.152.146	

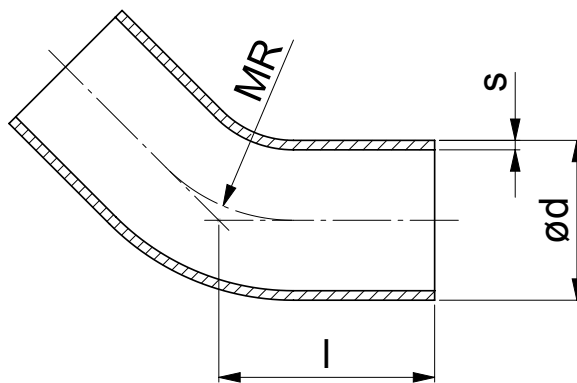


All lengths in millimeters (if not specified differently).

Elbow equal sided 45°

Product group:	Welding-Fittings
Description:	Elbow equal sided 45° acc. DIN 11865
Valid standards:	DIN 11865 with pipe connection acc. DIN 11866 Series B (ISO 1127)
Material:	Seamless or welded austenite stainless-steel pipe Stnr.-W. 1.4435 BN2 (Fe < 0.5%) acc. EN 10088
Permissible sterilization temperature:	150°C
Version / Surface quality:	Right-angled weld-on ends for orbital-welding Bright finish: Ra, internal < 0.8 µm, Ra, external < 0.8 µm Electropolishing: Ra, internal < 0.6 µm, Ra, external < 0.8 µm
Pipe-Hygiene Classes:	H3 acc. DIN 11866 *H4 (Ra < 0.4 µm), *H5 (Ra < 0.25 µm) / *available on request
Tolerance:	acc. ISO 5252 D4/T3 and ASTM A269 / A270
Marking:	Size, material number, melt number, manufacturer code
Certificates:	Certificate acc. EN 10204-3.1
Remarks:	Dimensions acc. DIN 11866, Series A (DIN 11850) available on request. Technical contents are subject to change

Dimensions for Elbow 45° acc. DIN 11865							
Sizes	d	S	l	MR	Item No.		
					Bright finish	Electropolishing	
acc. DIN 11866 Series B (ISO 1127)							
ISO DN 8	13.50	1.60	33.30	20.00	252.135.103.45MB	252.135.103.45	
ISO DN 10	17.20	1.60	36.60	28.00	252.172.140.45MB	252.172.140.45	
ISO DN 15	21.30	1.60	37.40	30.00	252.213.181.45MB	252.213.181.45	
ISO DN 20	26.90	1.60	51.80	28.50	252.269.237.45MB	252.269.237.45	
ISO DN 25	33.70	2.00	55.70	38.00	252.337.297.45MB	252.337.297.45	
ISO DN 32	42.40	2.00	59.70	47.50	252.424.384.45MB	252.424.384.45	
ISO DN 40	48.30	2.00	63.60	57.00	252.483.443.45MB	252.483.443.45	
ISO DN 50	60.30	2.00	71.50	76.00	252.603.563.45MB	252.603.563.45	
ISO DN 65	76.10	2.00	94.40	95.00	252.761.721.45MB	252.761.721.45	
ISO DN 80	88.90	2.30	102.40	114.50	252.889.844.45MB	252.889.844.45	
ISO DN 100	114.30	2.30	118.20	152.50	252.114.109.45MB	252.114.109.45	



Elbow equal sided 45°

Product group:	Welding-Fittings
Description:	Elbow equal sided 45° acc. DIN 11865
Valid standards:	DIN 11865 with pipe connection acc. DIN 11866 Series C (ASME BPE 2009)
Material:	Seamless or welded austenite stainless-steel pipe Strn.-W. 1.4435 BN2 (Fe < 0.5%) acc. EN 10088-1
Permissible sterilization temperature:	150°C
Version / Surface quality:	Right-angled weld-on ends for orbital-welding Bright finish: Ra, internal < 0.8 µm, Ra, external < 0.8 µm Electropolishing: Ra, internal < 0.6 µm, Ra, external < 0.8 µm
Pipe-Hygiene Classes:	H3 acc. DIN 11866 *H4 (Ra < 0.4 µm), *H5 (Ra < 0.25 µm) / *available on request
Tolerance:	acc. ISO 5252 D4/T3 and ASTM A269 / A270
Marking:	Size, material number, melt number, manufacturer code
Certificates:	Certificate acc. EN 10204-3.1B
Remarks:	Dimensions acc. DIN 11866, Series A (DIN 11850) available on request. Technical contents are subject to change

Dimensions for Elbow 45° acc. DIN 11865							
Sizes	d	S	I/A	MR	Item No.		
					Bright finish	Electropolishing	
acc. DIN 11866 Series B (ASME BPE 2009)							
OD 1/4"	6.35	0.89	50.80	15.90	252.063.045.45MB	252.063.045.45	
OD 3/8"	9.53	0.89	50.80	23.80	252.095.077.45MB	252.095.077.45	
OD 1/2"	12.70	1.65	57.20	27.00	252.127.094.45MB	252.127.094.45	
OD 3/4"	19.05	1.65	57.20	26.00	252.195.157.45MB	252.195.157.45	
OD 1"	25.40	1.65	57.20	38.10	252.254.221.45MB	252.254.221.45	
OD 1 1/2"	38.10	1.65	63.50	57.20	252.381.348.45MB	252.371.348.45	
OD 2"	50.80	1.65	76.20	76.20	252.508.475.45MB	252.508.475.45	
OD 2 1/2"	63.50	1.65	85.70	95.30	252.635.602.45MB	252.635.602.45	
OD 3"	76.20	1.65	92.10	114.30	252.762.729.45MB	252.762.729.45	
OD 4"	101.60	2.11	114.30	152.40	252.101.973.45MB	252.101.973.45	
OD 6"	152.40	2.77	158.80	228.60	252.152.146.45MB	252.152.146.45	

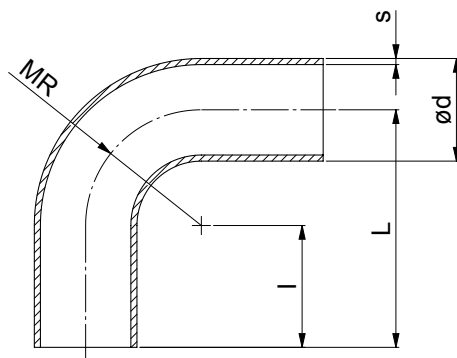
All lengths in millimeters (if not specified differently).

Elbow equal sided 90°

Product group:	Welding-Fittings
Description:	Elbow equal sided 90° acc. DIN 11865
Valid standards:	DIN 11865 with pipe connection acc. DIN 11866 Series B (ISO 1127)
Material:	Seamless or welded austenite stainless-steel pipe Strn.-W. 1.4435 BN2 (Fe < 0.5%) acc. EN 10088-1
Permissible sterilization temperature:	150°C
Version / Surface quality:	Right-angled weld-on ends for orbital-welding Bright finish: Ra, internal < 0.8 µm, Ra, external < 0.8 µm Electropolishing: Ra, internal < 0.6 µm, Ra, external < 0.8 µm
Pipe-Hygiene Classes:	H3 acc. DIN 11866 *H4 (Ra < 0.4 µm), *H5 (Ra < 0.25 µm) / *available on request
Tolerance:	acc. ISO 5252 D4/T3 and ASTM A269 / A270
Marking:	Size, material number, melt number, manufacturer code
Certificate:	Certificate acc. EN 10204-3.1
Remarks:	Dimensions acc. ISO 11865 Technical contents are subject to change

Dimensions for Elbow 45° acc. DIN 11865

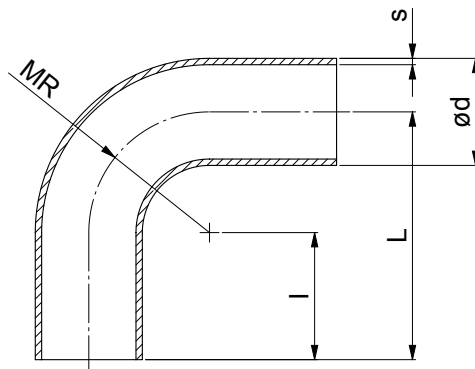
Sizes	d	S	L	I	MR	Item No.		
						Bright finish	Electropolishing	
acc. DIN 11866 Series B (ISO 1127)								
ISO DN 8	8	13.50	1.60	45.00	25.00	20.00	252.135.103.MB	252.135.103
ISO DN 10	10	17.20	1.60	53.00	25.00	28.00	252.172.140.MB	252.172.140
ISO DN 15	15	21.30	1.60	55.00	25.00	30.00	252.213.181.MB	252.213.181
ISO DN 20	20	26.90	1.60	68.50	40.00	28.50	252.269.237.MB	252.269.237
ISO DN 25	25	33.70	2.00	78.00	40.00	38.00	252.337.297.MB	252.337.297
ISO DN 32	32	42.40	2.00	87.50	40.00	47.50	252.424.384.MB	252.424.384
ISO DN 40	40	48.30	2.00	97.00	40.00	57.00	252.483.443.MB	252.483.443
ISO DN 50	50	60.30	2.00	116.00	40.00	76.00	252.603.563.MB	252.603.563
ISO DN 65	65	76.10	2.00	150.00	55.00	95.00	252.761.721.MB	252.761.721
ISO DN 80	80	88.90	2.30	169.50	55.00	114.50	252.889.844.MB	252.889.844
ISO DN 100	100	114.30	2.30	207.50	55.00	152.50	252.114.109.MB	252.114.109



Elbow equal sided 90°

Product group:	Welding-Fittings
Description:	Elbow equal sided 90° acc. DIN 11865
Valid standards:	DIN 11865 with pipe connection acc. DIN 11866 Series C (ASME BPE 2009)
Material:	Seamless or welded austenite stainless-steel pipe Strn.-W. 1.4435 BN2 (Fe < 0.5%) acc. EN 10088-1
Permissible sterilization temperature:	150°C
Version / Surface quality:	Right-angled weld-on ends for orbital-welding Bright finish: Ra, internal < 0.8 µm, Ra, external < 0.8 µm Electropolishing: Ra, internal < 0.6 µm, Ra, external < 0.8 µm
Pipe-Hygiene Classes:	H3 acc. DIN 11866 *H4 (Ra < 0.4 µm), *H5 (Ra < 0.25 µm) / *available on request
Tolerance:	acc. DIN EN 1127 / ISO 5252 D4/T3 and ASTM A269 / A270
Marking:	Size, material number, melt number, manufacturer code
Certificates:	Certificate acc. EN 10204-3.1B
Remarks:	Dimensions acc. DIN 11866, Series A (DIN 11850) available on request. Technical contents are subject to change

Dimensions for Elbow 90° acc. DIN 11865								
Sizes	d	S	L / A	I	MR	Item No. Bright finish	Item No. Electropolishing	
acc. DIN 11866 Series C (ASME BPE 2009)								
OD 1/4"	6.35	0.89	66.70	50.80	14.30	252.063.045.MB	252.063.045	
OD 3/8"	9.53	0.89	66.70	42.70	28.60	252.095.077.MB	252.095.077	
OD 1/2"	12.70	1.65	76.20	49.20	28.60	252.127.094.MB	252.127.094	
OD 3/4"	19.05	1.65	76.20	50.20	28.60	252.195.157.MB	252.195.157	
OD 1"	25.40	1.65	76.20	38.10	38.10	252.254.221.MB	252.254.221	
OD 1 1/2"	38.10	1.65	95.30	38.10	57.20	252.381.348.MB	252.381.348	
OD 2"	50.80	1.65	120.70	44.50	76.20	252.508.475.MB	252.508.475	
OD 2 1/2"	63.50	1.65	139.70	44.50	95.30	252.635.602.MB	252.635.602	
OD 3"	76.20	1.65	158.50	44.50	114.30	252.762.729.MB	252.762.729	
OD 4"	101.60	2.11	203.20	50.80	152.40	252.101.974.MB	252.101.974	
OD 6"	152.40	2.77	292.10	63.50	228.60	252.152.146.MB	252.152.146	



All lengths in millimeters (if not specified differently).

Elbow equal sided 90° (from solid material)

Product group:	Welding-Fittings
Description:	Elbow equal sided 90° (from solid material)
Valid standards:	Pipe connection acc. DIN 11866 Series B (ISO 1127)
Material:	Stnr.-W. 1.4435 BN2 (Fe < 0.5%) acc. EN 10088
Permissible sterilization temperature:	150°C
Version / Surface quality:	Surface, internal and external bright finish. Right angled weld-on ends for welding Ra, internal < 0.6 µm, Ra, externa < 0.8 µm
Pipe-Hygiene Classes:	H 3 acc. DIN 11866
Marking:	Material number, melt number, manufacturer code
Certificates:	Certificate acc. EN 10204-3.1
Option:	Electropolishing. Further dimensions available on request.
Remarks:	All sizes made from solid material Technical contents are subject to change

Dimensions for Elbow 90°					
Sizes	AD	ID	L	Item No.	
acc. DIN 11866 Series B (ISO 1127)					
ISO DN 6	10.2	7.0	24.0	252.045.006	
ISO DN 8	13.5	10.3	24.0	252.045.008	
ISO DN 10	17.2	14.0	24.0	252.045.010	

T-Piece, equal

Product group: Welding-Fittings

Description: T-Piece, equal acc. DIN 11865

Valid standards: DIN 11865 with pipe connection acc. DIN 11866 Series B (ISO 1127)

Material: Seamless or welded austenite stainless-steel pipe
Strn.-W. 1.4435 BN2 (Fe < 0.5%) acc. EN 10088-1, welding seam Fe < 1%

Permissible sterilization temperature: 150°C

Version / Surface quality: Right-angled weld-on ends for orbital-welding
Bright finish: Ra, internal < 0.8 µm, Ra, external < 0.8 µm
Electropolishing: Ra, internal < 0.6 µm, Ra, external < 0.8 µm

Pipe-Hygiene Classes: H3 acc. DIN 11866
*H4 (Ra < 0.4 µm), *H5 (Ra < 0.25 µm) / *available on request

Tolerance: acc. ISO 5252 D4/T3 and ASTM A269 / A270

Marking: Size, material number, melt number, manufacturer code

Certificates: Certificate acc. EN 10204-3.1

Remarks: Dimensions acc. DIN 11866, Series A (DIN 11850) available on request.
T-pieces with short outlet also available upon request
Technical contents are subject to change

Dimensions for T-Piece, equal								
Sizes		D / d	S1 / S2	L	I	Item No. Bright finish	Item No. Electropolishing	
acc. DIN 11866 Series B (ISO 1127)								
ISO DN	8 x 8	13.50 x 13.50	1.60 / 1.60	64.00	32.00	253.135.103.MB	253.135.103	
ISO DN	10 x 8	17.20 x 13.50	1.60 / 1.60	68.00	34.00	253.172.135.MB	253.172.135	
ISO DN	10 x 10	17.20 x 17.20	1.60 / 1.60	68.00	34.00	253.172.140.MB	253.172.140	
ISO DN	15 x 8	21.30 x 13.50	1.60 / 1.60	72.00	36.00	253.213.135.MB	253.213.135	
ISO DN	15 x 10	21.30 x 17.20	1.60 / 1.60	72.00	36.00	253.213.172.MB	253.213.172	
ISO DN	15 x 15	21.30 x 21.30	1.60 / 1.60	72.00	36.00	253.213.181.MB	253.213.181	
ISO DN	20 x 8	26.90 x 13.50	1.60 / 1.60	110.00	55.00	253.269.135.MB	253.269.135	
ISO DN	20 x 10	26.90 x 17.20	1.60 / 1.60	110.00	55.00	253.269.172.MB	253.269.172	
ISO DN	20 x 15	26.90 x 21.30	1.60 / 1.60	110.00	55.00	253.269.213.MB	253.269.213	
ISO DN	20 x 20	26.90 x 26.90	1.60 / 1.60	110.00	55.00	253.269.237.MB	253.269.237	

All lengths in millimeters (if not specified differently).

T-Piece, equal

Product group: Welding-Fittings

Valid standards: DIN 11865 with pipe connection acc. DIN 11866 Series B (ISO 1127)

Remarks: Dimensions acc. DIN 11866, Series A (DIN 11850) available on request
T-pieces with a short outlet also available upon request
Technical contents are subject to change

Dimensions for T-Piece							
Sizes	D / d	S1 / S2	L	l	Item No.		
					Bright finish	Electropolishing	
acc. DIN 11866 Series B (ISO 1127)							
ISO DN 25 x 10	33.70 x 17.20	2.00 / 1.60	120.00	60.00	253.337.172.MB	253.337.172	
ISO DN 25 x 15	33.70 x 21.30	2.00 / 1.60	120.00	60.00	253.337.213.MB	253.337.213	
ISO DN 25 x 20	33.70 x 26.90	2.00 / 1.60	120.00	60.00	253.337.269.MB	253.337.269	
ISO DN 25 x 25	33.70 x 33.70	2.00 / 2.00	120.00	60.00	253.337.297.MB	253.337.297	
ISO DN 32 x 15	42.40 x 21.30	2.00 / 1.60	130.00	65.00	253.424.213.MB	253.424.213	
ISO DN 32 x 20	42.40 x 26.90	2.00 / 1.60	130.00	65.00	253.424.269.MB	253.424.269	
ISO DN 32 x 25	42.40 x 33.70	2.00 / 2.00	130.00	65.00	253.424.337.MB	253.424.337	
ISO DN 32 x 32	42.40 x 42.40	2.00 / 2.00	130.00	65.00	253.424.384.MB	253.424.384	
ISO DN 40 x 15	48.30 x 21.30	2.00 / 1.60	130.00	65.00	253.483.213.MB	253.483.213	
ISO DN 40 x 20	48.30 x 26.90	2.00 / 1.60	130.00	65.00	253.483.269.MB	253.483.269	
ISO DN 40 x 25	48.30 x 33.70	2.00 / 2.00	130.00	65.00	253.483.337.MB	253.483.337	
ISO DN 40 x 32	48.30 x 42.40	2.00 / 2.00	130.00	65.00	253.483.424.MB	253.483.424	
ISO DN 40 x 40	48.30 x 48.30	2.00 / 2.00	130.00	65.00	253.483.443.MB	253.483.443	
ISO DN 50 x 20	60.30 x 26.90	2.00 / 1.60	180.00	90.00	253.603.269.MB	253.603.269	
ISO DN 50 x 25	60.30 x 33.70	2.00 / 2.00	180.00	90.00	253.603.337.MB	253.603.337	
ISO DN 50 x 32	60.30 x 42.40	2.00 / 2.00	180.00	90.00	253.603.424.MB	253.603.424	
ISO DN 50 x 40	60.30 x 48.30	2.00 / 2.00	180.00	90.00	253.603.483.MB	253.603.483	
ISO DN 50 x 50	60.30 x 60.30	2.00 / 2.00	180.00	90.00	253.603.563.MB	253.603.563	
ISO DN 65 x 25	76.10 x 33.70	2.00 / 2.00	220.00	90.00	253.761.337.MB	253.761.337	
ISO DN 65 x 32	76.10 x 42.40	2.00 / 2.00	220.00	90.00	253.761.424.MB	253.761.424	
ISO DN 65 x 40	76.10 x 48.30	2.00 / 2.00	220.00	90.00	253.761.483.MB	253.761.483	
ISO DN 65 x 50	76.10 x 60.30	2.00 / 2.00	220.00	90.00	253.761.603.MB	253.761.603	
ISO DN 65 x 65	76.10 x 76.10	2.00 / 2.00	220.00	110.00	253.761.721.MB	253.761.721	
ISO DN 80 x 32	88.90 x 42.40	2.30 / 2.00	260.00	110.00	253.889.424.MB	253.889.424	
ISO DN 80 x 40	88.90 x 48.30	2.30 / 2.00	260.00	110.00	253.889.483.MB	253.889.483	
ISO DN 80 x 50	88.90 x 60.30	2.30 / 2.00	160.00	110.00	253.889.603.MB	253.889.603	
ISO DN 80 x 65	88.90 x 76.10	2.30 / 2.00	260.00	110.00	253.889.761.MB	253.889.761	
ISO DN 80 x 80	88.90 x 88.90	2.30 / 2.30	260.00	130.00	253.889.884.MB	253.889.884	
ISO DN 100 x 50	114.30 x 60.30	2.30 / 2.00	320.00	130.00	253.114.603.MB	253.114.603	
ISO DN 100 x 65	114.30 x 76.10	2.30 / 2.00	320.00	130.00	253.114.761.MB	253.114.761	
ISO DN 100 x 80	114.30 x 88.90	2.30 / 2.30	320.00	130.00	253.114.889.MB	253.114.889	

T-Piece, equal

Product group:	Welding-Fittings
Description:	T-Piece, equal acc. DIN 11865
Valid standards:	DIN 11865 with pipe connection acc. DIN 11866 Series C (ASME BPE 2009)
Material:	Seamless or welded austenite stainless-steel pipe Strn.-W. 1.4435 BN2 (Fe < 0.5%) acc. EN 10088-1, welding seam Fe < 1%
Permissible sterilization temperature:	150°C
Version / Surface quality:	Right-angled weld-on ends for orbital-welding Bright finish: Ra, internal < 0.8 µm, Ra, external < 0.8 µm Electropolishing: Ra, internal < 0.6 µm, Ra, external < 0.8 µm
Pipe-Hygiene Classes:	H3 acc. DIN 11866 *H4 (Ra < 0.4 µm), *H5 (Ra < 0.25 µm) / *available on request
Tolerance:	acc. ISO 5252 D4/T3 and ASTM A269 / A270
Marking:	Size, material number, melt number, manufacturer code
Certificates:	Certificate acc. EN 10204-3.1
Remarks:	Dimensions acc. DIN 11866, Series A (DIN 11850) available on request T-Piece with short outlet available upon request Technical contents are subject to change

Dimensions for T-Piece, equal acc. DIN 11865									
Sizes		D / d	S1 / S2	L	I	Item No. Bright finish	Item No. Electropolishing		
acc. DIN 11866 Series C (ASME BPE 2009)									
BS	1/4" x 1/4"	6.35 x 6.35	0.89 / 0.89	89.00	44.50	253.063.045.MB	253.063.045		
BS	3/8" x 1/4"	9.53 x 6.35	0.89 / 0.89	89.00	44.50	253.095.063.MB	253.095.063		
BS	3/8" x 3/8"	9.53 x 9.53	0.89 / 0.89	89.00	44.50	253.095.077.MB	253.095.077		
BS	1/2" x 1/4"	12.70 x 6.35	1.65 / 0.89	95.20	47.60	253.127.063.MB	253.127.094		
BS	1/2" x 3/8"	12.70 x 9.53	1.65 / 0.89	95.20	47.60	253.127.095.MB	253.127.095		
BS	1/2" x 1/2"	12.70 x 12.70	1.65 / 1.65	95.20	47.60	253.127.094.MB	253.127.094		
BS	3/4" x 1/4"	19.05 x 6.35	1.65 / 0.89	101.60	50.80	253.195.063.MB	253.195.063		
BS	3/4" x 3/8"	19.05 x 9.53	1.65 / 0.89	101.60	50.80	253.195.095.MB	253.195.095		
BS	3/4" x 1/2"	19.05 x 12.70	1.65 / 1.65	101.60	50.80	253.195.127.MB	253.195.127		
BS	3/4" x 3/4"	19.05 x 19.05	1.65 / 1.65	101.60	50.80	253.195.157.MB	253.195.157		

All lengths in millimeters (if not specified differently).

T-Piece, equal

Product group: Welding-Fittings

Bezeichnung: DIN 11865 with pipe connection acc. DIN 11866 Series C (ASME BPE 2009)

Remarks: Dimensions acc. DIN 11866, Series A (DIN 11850) available on request
T-pieces with short outlet also available upon request
Technical contents are subject to change

Dimensions for T-Piece, equal acc. DIN 11865											
Sizes		D / d		S1 / S2		L		I		Item No. Bright finish	Item No. Electropolishing
acc. DIN 11866 Series C (ASME BPE 2009)											
BS	1"	x	1/4"	25.40 x 6.35	1.65 / 0.89	108.00	54.00	253.254.063.MB	253.254.063		
BS	1"	x	3/8"	25.40 x 9.53	1.65 / 0.89	108.00	54.00	253.254.095.MB	253.254.095		
BS	1"	x	1/2"	25.40 x 12.70	1.65 / 1.65	108.00	54.00	253.254.127.MB	253.254.127		
BS	1"	x	3/4"	25.40 x 19.05	1.65 / 1.65	108.00	54.00	253.254.195.MB	253.254.195		
BS	1"	x	1"	25.40 x 25.40	1.65 / 1.65	108.00	54.00	253.254.221.MB	253.254.221		
BS	1 1/2"	x	1/2"	38.10 x 12.70	1.65 / 1.65	120.60	60.30	253.381.127.MB	253.381.127		
BS	1 1/2"	x	3/4"	38.10 x 19.05	1.65 / 1.65	120.60	60.30	253.381.195.MB	253.381.195		
BS	1 1/2"	x	1"	38.10 x 25.40	1.65 / 1.65	120.60	60.30	253.381.254.MB	253.381.254		
BS	1 1/2"	x	1 1/2"	38.10 x 38.10	1.65 / 1.65	120.60	60.30	253.381.348.MB	253.381.348		
BS	2"	x	1/2"	50.80 x 12.70	1.65 / 1.65	146.00	66.70	253.508.127.MB	253.508.127		
BS	2"	x	3/4"	50.80 x 19.05	1.65 / 1.65	146.00	66.70	253.508.195.MB	253.508.195		
BS	2"	x	1"	50.80 x 25.40	1.65 / 1.65	146.00	66.70	253.508.254.MB	253.508.254		
BS	2"	x	1 1/2"	50.80 x 38.10	1.65 / 1.65	146.00	66.70	253.508.381.MB	253.508.381		
BS	2"	x	2"	50.80 x 50.80	1.65 / 1.65	146.00	66.70	253.508.475.MB	253.508.475		
BS	2 1/2"	x	1/2"	63.50 x 12.70	1.65 / 1.65	158.80	73.00	253.635.127.MB	253.635.127		
BS	2 1/2"	x	3/4"	63.50 x 19.05	1.65 / 1.65	158.80	73.00	253.635.195.MB	253.635.195		
BS	2 1/2"	x	1"	63.50 x 25.40	1.65 / 1.65	158.80	73.00	253.635.254.MB	253.635.254		
BS	2 1/2"	x	1 1/2"	63.50 x 38.10	1.65 / 1.65	158.80	73.00	253.635.381.MB	253.635.381		
BS	2 1/2"	x	2"	63.50 x 50.80	1.65 / 1.65	158.80	73.00	253.635.508.MB	253.635.508		
BS	2 1/2"	x	2 1/2"	63.50 x 63.50	1.65 / 1.65	158.80	73.00	253.635.602.MB	253.635.602		
BS	3"	x	1/2"	76.20 x 12.70	1.65 / 1.65	171.40	79.40	253.762.127.MB	253.762.127		
BS	3"	x	3/4"	76.20 x 19.05	1.65 / 1.65	171.40	79.40	253.762.195.MB	253.762.195		
BS	3"	x	1"	76.20 x 25.40	1.65 / 1.65	171.40	79.40	253.762.254.MB	253.762.254		
BS	3"	x	1 1/2"	76.20 x 38.10	1.65 / 1.65	171.40	79.40	253.762.381.MB	253.762.381		
BS	3"	x	2"	76.20 x 50.80	1.65 / 1.65	171.40	79.40	253.762.508.MB	253.762.508		
BS	3"	x	2 1/2"	76.20 x 63.50	1.65 / 1.65	171.40	79.40	253.762.635.MB	253.762.635		
BS	3"	x	3"	76.20 x 76.20	1.65 / 1.65	171.40	79.40	253.762.729.MB	253.762.729		
BS	4"	x	1/2"	101.60 x 12.70	2.11 / 1.65	209.60	98.40	253.101.127.MB	253.101.127		
BS	4"	x	3/4"	101.60 x 19.05	2.11 / 1.65	209.60	98.40	253.101.195.MB	253.101.195		
BS	4"	x	1"	101.60 x 25.40	2.11 / 1.65	209.60	98.40	253.101.254.MB	253.101.254		
BS	4"	x	1 1/2"	101.60 x 38.10	2.11 / 1.65	209.60	98.40	253.101.381.MB	253.101.381		
BS	4"	x	2"	101.60 x 50.80	2.11 / 1.65	209.60	98.40	253.101.508.MB	253.101.508		
BS	4"	x	2 1/2"	101.60 x 63.50	2.11 / 1.65	209.60	98.40	253.101.635.MB	253.101.635		
BS	4"	x	3"	101.60 x 76.20	2.11 / 1.65	209.60	98.40	253.101.762.MB	253.101.762		
BS	4"	x	4"	101.60 x 101.60	2.11 / 2.11	209.60	104.80	253.101.974.MB	253.101.974		
BS	6"	x	4"	152.40 x 101.60	2.77 / 2.11	285.80	130.20	253.152.101.MB	253.152.101		
BS	6"	x	6"	152.40 x 152.40	2.77 / 2.77	285.80	142.90	253.152.146.MB	253.152.146		

T-Piece, equal (from solid material)

Product group:	Welding-Fittings
Description:	T-Piece, equal (from solid material)
Valid standards:	Pipe connection acc. DIN 11866 Series B (ISO 1127)
Material:	Stnr.-W. 1.4435 BN2 (Fe < 0.5%) acc. EN 10088
Permissible sterilization temperature:	150°C
Version / Surface quality:	Surface, internal and external bright finish. Right-angled weld-on ends for welding. Ra, internal < 0.4 µm, Ra, external < 0.8 µm
Pipe-Hygiene Classes:	H3 / H4 acc. DIN 11866
Marking:	Material number, melt number, manufacturer code
Certificates:	Certificate acc. EN 10204-3.1
Option:	Electropolishing and further dimensions available on request.
Remarks:	All sizes made from solid material Technical contents are subject to change

Dimensions for T-Piece (from solid material)					
Sizes	AD	ID	L	Item No.	
acc. DIN 11866 Series B (ISO 1127)					
ISO DN 6	10.2	7.0	24.0	253.045.006	
ISO DN 8	13.5	10.3	24.0	253.045.008	

All lengths in millimeters (if not specified differently).

Cross-Piece, equal (from solid material)

Product group:	Welding-Fittings
Description:	Cross-Piece, equal (from solid material)
Valid standards:	Pipe connection acc. DIN 11866 Series B (ISO 1127)
Material:	Stnr.-W. 1.4435 BN2 (Fe < 0.5%) acc. EN 10088
Permissible sterilization temperature:	150°C
Version / Surface quality:	Surface, internal and external bright finish. Right-angled weld-on ends for welding Ra, internal < 0.4 µm, Ra, external < 0.8 µm
Pipe-Hygiene Classes:	H3 / H4 acc. DIN 11866
Marking:	Size, material number, melt number, manufacturer code
Certificates:	Certificate acc. EN 10204-3.1
Option:	Electropolishing and further dimensions available on request
Remarks:	All sizes made from solid material Technical contents are subject to change

Dimensions for Cross-Piece (from solid material)					
Sizes	AD	ID	L	Item No.	
acc. DIN 11866 Series B (ISO 1127)					
ISO DN 6	10.2	7.0	24.0	254.045.006	
ISO DN 8	13.5	10.3	24.0	254.045.008	
ISO DN 10	17.2	14.0	24.0	254.045.010	

Concentric Reducer

Product group:	Welding-Fittings
Description:	Concentric Reducer
Valid standards:	DIN 11865 with pipe connection acc. DIN 11866 Series B (ISO 1127)
Material:	Stnr.-W. 1.4435 BN2 (Fe < 0.5%) acc. EN 10088
Permissible sterilization temperature:	150°C
Version / Surface quality:	Surface, internal and external bright finish. Right-angled weld-on ends for orbital-welding Ra, internal < 0.8 µm, Ra, external < 0.8 µm
Pipe-Hygiene Classes:	H3 acc. DIN 11866 *H4 (Ra < 0.4 µm), *H5 (Ra < 0.25 µm) / *available on request
Marking:	Material number, melt number, manufacturer code
Certificates:	Certificate acc. EN 10204-3.1
Option:	Electropolishing and further dimensions available on request
Remarks:	Technical contents are subject to change

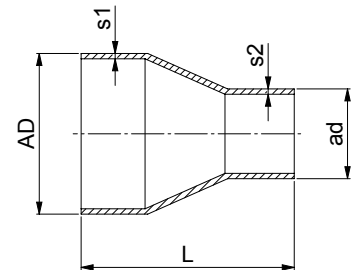
Dimensions for Concentric Reducer							
Sizes	AD	ad	s1	s2	L	Item No.	
acc. DIN 11866 Series (ISO 1127)							
DN 10 - DN 08	17.2	13.5	1.6	1.6	60.0	255.172.135.DOCK	<p>The diagram shows a cross-section of a concentric reducer. It consists of a larger diameter section on the left and a smaller diameter section on the right, connected by a tapered section. The outer diameter of the larger section is labeled AD, and the outer diameter of the smaller section is labeled ad. The thickness of the larger section is s1, and the thickness of the smaller section is s2. The total length of the part is labeled L.</p>
DN 15 - DN 08	21.3	13.5	1.6	1.6	60.0	255.213.135.DOCK	
DN 15 - DN 10	21.3	17.2	1.6	1.6	60.0	255.213.172.DOCK	
DN 20/1 - DN 08	26.9	13.5	1.6	1.6	60.0	255.269.135.DOCK	
DN 20/1 - DN 10	26.9	17.2	1.6	1.6	60.0	255.269.172.DOCK	
DN 20/1 - DN 15	26.9	21.3	1.6	1.6	60.0	255.269.213.DOCK	
DN 25/1 - DN 15	33.7	21.3	2.0	1.6	70.0	255.337.213.DOCK	
DN 25/1 - DN 20/1	33.7	26.9	2.0	1.6	70.0	255.337.269.DOCK	
DN 32 - DN 15	42.4	21.3	2.0	1.6	80.0	255.424.213.DOCK	
DN 32 - DN 20/1	42.4	26.9	2.0	1.6	80.0	255.424.269.DOCK	
DN 32 - DN 25/1	42.4	33.7	2.0	2.0	80.0	255.424.337.DOCK	
DN 40 - DN 15	48.3	21.3	2.0	1.6	90.0	255.483.213.DOCK	
DN 40 - DN 20/1	48.3	26.9	2.0	1.6	90.0	255.483.269.DOCK	
DN 40 - DN 25/1	48.3	33.7	2.0	2.0	90.0	255.483.337.DOCK	
DN 40 - DN 32	48.3	42.4	2.0	2.0	90.0	255.483.424.DOCK	

All lengths in millimeters (if not specified differently).

Concentric Reducer

Product group:	Welding-Fittings
Description:	Concentric Reducer
Valid standards:	DIN 11865 with pipe connection acc. DIN 11866 Series B (ISO 1127)
Material:	Stnr.-W. 1.4435 BN2 (Fe < 0.5%) acc. EN 10088
Permissible sterilization temperature:	150°C
Version / Surface quality:	Surface, internal and external bright finish. Right-angled weld-on ends for orbital-welding Ra, internal < 0.8 µm, Ra, external < 0.8 µm
Pipe-Hygiene Classes:	H3 acc. DIN 11866 *H4 (Ra < 0.4 µm), *H5 (Ra < 0.25 µm) / *available on request
Marking:	Material number, melt number, manufacturer code
Certificates:	Certificate acc. EN 10204-3.1
Option:	Electropolishing and further dimensions available on request
Remarks:	Technical contents are subject to change

Dimensions for Concentric Reducer						
Sizes	AD	ad	s1	s2	L	Item No.
acc. DIN 11866 Series B (ISO 1127)						
DN 50 - DN 20/1	60.3	26.9	2.0	1.6	100.0	255.603.269.DOCK
DN 50 - DN 25/1	60.3	33.7	2.0	2.0	100.0	255.603.337.DOCK
DN 50 - DN 32	60.3	42.4	2.0	2.0	100.0	255.603.424.DOCK
DN 50 - DN 40	60.3	48.3	2.0	2.0	100.0	255.603.483.DOCK
DN 65 - DN 25/1	76.1	33.7	2.0	2.0	110.0	255.761.337.DOCK
DN 65 - DN 32	76.1	42.4	2.0	2.0	110.0	255.761.424.DOCK
DN 65 - DN 40	76.1	48.3	2.0	2.0	110.0	255.761.483.DOCK
DN 65 - DN 50	76.1	60.3	2.0	2.0	110.0	255.761.603.DOCK
DN 80 - DN 50	88.9	60.3	2.3	2.0	110.0	255.889.603.DOCK
DN 80 - DN 65	88.9	76.1	2.3	2.0	110.0	255.889.761.DOCK
DN 100 - DN 65	114.3	76.1	2.3	2.3	135.0	255.114.761.DOCK
DN 100 - DN 80	114.3	88.9	2.3	2.3	135.0	255.114.889.DOCK



Concentric Reducer

Product group:	Welding-Fittings
Description:	Concentric Reducer
Valid standards:	DIN 11865 with pipe connection acc. DIN 11866 Series C (ASME BPE 2009)
Material:	Stnr.-W. 1.4435 BN2 (Fe < 0.5%) acc. EN 10088
Permissible sterilization temperature:	150°C
Version / Surface quality:	Surface, internal and external bright finish. Right-angled weld-on ends for orbital-welding Ra, internal < 0.8 µm, Ra, external < 0.8 µm
Pipe-Hygiene Classes:	H3 acc. DIN 11866 *H4 (Ra < 0.4 µm), *H5 (Ra < 0.25 µm) / *available on request
Marking:	Material number, melt number, manufacturer code
Certificates:	Certificate acc. EN 10204-3.1
Option:	Electropolishing and further dimensions available on request
Remarks:	Technical contents are subject to change

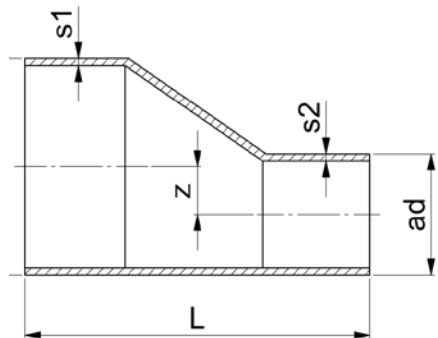
Dimensions for Concentric Reducer							
Sizes	AD	ad	s1	s2	L	Item No.	
acc. DIN 11866 Series C (ASME BPE 2009)							
NW 1/2" - 1/4"	12.70	6.35	1.65	0.89	38.0	255.127.063.DOCK	<p>The diagram shows a side view of a concentric reducer. It consists of a larger diameter pipe on the left that tapers to a smaller diameter pipe on the right. The outer diameter of the larger pipe is labeled AD, and the outer diameter of the smaller pipe is labeled ad. The thickness of the larger pipe is labeled s1, and the thickness of the smaller pipe is labeled s2. The total length of the reducer is labeled L. The drawing uses dashed lines to indicate the internal diameter and the centerline of the pipes.</p>
NW 1/2" - 3/8"	12.70	9.53	1.65	0.89	38.0	255.127.095.DOCK	
NW 3/4" - 3/8"	19.05	9.53	1.65	0.89	60.0	255.190.095.DOCK	
NW 3/4" - 1/2"	19.05	12.70	1.65	1.65	60.0	255.190.127.DOCK	
NW 1" - 1/2"	25.40	12.70	1.65	1.65	60.0	255.254.127.DOCK	
NW 1" - 3/4"	25.40	19.05	1.65	1.65	60.0	255.254.190.DOCK	
NW 1 1/2" - 1/2"	38.10	12.70	1.65	1.65	80.0	255.381.127.DOCK	
NW 1 1/2" - 3/4"	38.10	19.05	1.65	1.65	80.0	255.381.190.DOCK	
NW 1 1/2" - 1"	38.10	25.40	1.65	1.65	80.0	255.381.254.DOCK	
NW 2" - 1"	50.80	25.40	1.65	1.65	90.0	255.508.254.DOCK	
NW 2" - 1 1/2"	50.80	38.10	1.65	1.65	90.0	255.508.381.DOCK	
NW 2 1/2" - 1 1/2"	63.50	38.10	1.65	1.65	100.0	255.635.381.DOCK	
NW 2 1/2" - 2"	63.50	50.80	1.65	1.65	100.0	255.635.508.DOCK	
NW 3" - 1 1/2"	76.20	38.10	1.65	1.65	110.0	255.762.381.DOCK	
NW 3" - 2"	76.20	50.80	1.65	1.65	110.0	255.762.508.DOCK	
NW 3" - 2 1/2"	76.20	63.50	1.65	1.65	110.0	255.762.635.DOCK	
NW 4" - 2"	101.60	50.80	2.11	1.65	135.0	255.102.508.DOCK	
NW 4" - 2 1/2"	101.60	63.50	2.11	1.65	135.0	255.102.635.DOCK	
NW 4" - 3"	101.60	76.20	2.11	1.65	135.0	255.102.762.DOCK	

All lengths in millimeters (if not specified differently).

Excentric Reducer

Product group:	Welding-Fittings
Description:	Excentric Reducer
Valid standards:	DIN 11865 with pipe connection acc. DIN 11866 Series B (ISO 1127)
Material:	Stnr.-W. 1.4435 BN2 (Fe < 0.5%) acc. EN 10088
Permissible sterilization temperature:	150°C
Version / Surface Quality:	Surface, internal and external bright finish. Right-angled weld-on ends for orbital-welding Ra, internal < 0.8 µm, Ra, external < 0.8 µm
Pipe-Hygiene Classes:	H3 acc. DIN 11866 *H4 (Ra < 0.4 µm), *H5 (Ra < 0.25 µm) / *available on request
Marking:	Material number, melt number, manufacturer code
Certificates:	Certificate acc. EN 10204-3.1
Option:	Electropolishing and further dimensions available on request
Remarks:	Technical contents are subject to change

Dimensions for Excentric Reducer							
Sizes	AD	ad	s1	s2	L	z	Item No.
acc. DIN 11866 Series B (ISO 1127)							
DN 10 - DN 08	17.2	13.5	1.6	1.6	60.0	1.85	256.172.135.DOCK
DN 15 - DN 08	21.3	13.5	1.6	1.6	60.0	3.90	256.213.135.DOCK
DN 15 - DN 10	21.3	17.2	1.6	1.6	60.0	2.05	256.213.172.DOCK
DN 20/1 - DN 08	26.9	13.5	1.6	1.6	60.0	6.70	256.269.135.DOCK
DN 20/1 - DN 10	26.9	17.2	1.6	1.6	60.0	4.85	256.269.172.DOCK
DN 20/1 - DN 15	26.9	21.3	1.6	1.6	60.0	2.80	256.269.213.DOCK
DN 25/1 - DN 15	33.7	21.3	2.0	1.6	70.0	6.20	256.337.213.DOCK
DN 25/1 - DN 20/1	33.7	26.9	2.0	1.6	70.0	3.40	256.337.269.DOCK
DN 32 - DN 15	42.4	21.3	2.0	1.6	80.0	10.55	256.424.213.DOCK
DN 32 - DN 20/1	42.4	26.9	2.0	1.6	80.0	7.75	256.424.269.DOCK
DN 32 - DN 25/1	42.4	33.7	2.0	2.0	80.0	4.35	256.424.337.DOCK
DN 40 - DN 15	48.3	21.3	2.0	1.6	90.0	13.50	256.483.213.DOCK
DN 40 - DN 20/1	48.3	26.9	2.0	1.6	90.0	10.70	256.483.269.DOCK
DN 40 - DN 25/1	48.3	33.7	2.0	2.0	90.0	7.30	256.483.337.DOCK
DN 40 - DN 32	48.3	42.4	2.0	2.0	90.0	2.95	256.483.424.DOCK



Excentric Reducer

Product group:	Welding-Fittings
Description:	Excentric Reducer
Valid standards:	DIN 11865 with pipe connection acc. DIN 11866 Series B (ISO 1127)
Material:	Stnr.-W. 1.4435 BN2 (Fe < 0.5%) acc. EN 10088
Permissible sterilization temperature:	150°C
Version / Surface quality:	Surface, internal and external bright finish. Right-angled weld-on ends for orbital-welding Ra, internal < 0.8 µm, Ra, external < 0.8 µm
Pipe-Hygiene Classes:	H3 acc. DIN 11866 *H4 (Ra < 0.4 µm), *H5 (Ra < 0.25 µm) / *available on request.
Marking:	Material number, melt number, manufacturer code
Certificates:	Certificate acc. EN 10204-3.1
Option:	Electropolishing and further dimensions available on request
Remarks:	Technical contents are subject to change

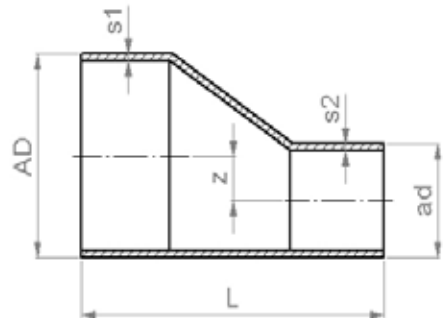
Dimensions for Excentric Reducer								
Sizes	AD	ad	s1	s2	L	z	Item No.	
acc. DIN 11866 Series B (ISO 1127)								
DN 50 - DN 20/1	60.3	26.9	2.0	1.6	100.0	16.70	256.603.269.DOCK	<p>The diagram shows a cross-section of an excentric reducer. It consists of a larger diameter section on the left and a smaller diameter section on the right, connected by a tapered section. The overall height of the larger section is labeled AD. The height of the smaller section is labeled ad. The total length of the part is labeled L. The distance from the centerline of the larger section to the centerline of the smaller section is labeled z. The thickness of the wall at the larger diameter end is labeled s1, and at the smaller diameter end, it is labeled s2.</p>
DN 50 - DN 25/1	60.3	33.7	2.0	2.0	100.0	13.30	256.603.337.DOCK	
DN 50 - DN 32	60.3	42.4	2.0	2.0	100.0	8.95	256.603.424.DOCK	
DN 50 - DN 40	60.3	48.3	2.0	2.0	100.0	6.00	256.603.483.DOCK	
DN 65 - DN 25/1	76.1	33.7	2.0	2.0	110.0	21.20	256.761.337.DOCK	
DN 65 - DN 40	76.1	48.3	2.0	2.0	110.0	13.90	256.761.483.DOCK	
DN 65 - DN 50	76.1	60.3	2.0	2.0	110.0	7.90	256.761.603.DOCK	
DN 80 - DN 50	88.9	60.3	2.3	2.0	110.0	14.30	256.889.603.DOCK	
DN 80 - DN 65	88.9	76.1	2.3	2.0	110.0	6.40	256.889.761.DOCK	
DN 100 - DN 65	114.3	76.1	2.3	2.0	135.0	19.10	256.114.761.DOCK	
DN 100 - DN 80	114.3	88.9	2.3	2.3	135.0	12.70	256.114.889.DOCK	

All lengths in millimeters (if not specified differently).

Excentric Reducer

Product group:	Welding-Fittings
Description:	Excentric Reducer
Valid standards:	DIN 11865 with pipe connection acc. DIN 11866 Series C (ASME BPE 2009)
Material:	Stnr.-W. 1.4435 BN2 (Fe < 0.5%) acc. EN 10088
Permissible sterilization temperature:	150°C
Version / Surface quality:	Surface, internal and external bright finish. Right-angled weld-on ends for orbital-welding Ra, internal < 0.8 µm, Ra, external < 0.8 µm
Pipe-Hygiene Classes:	H3 acc. DIN 11866 *H4 (Ra < 0.4 µm), *H5 (Ra < 0.25 µm) / *available on request
Marking:	Size, material number, melt number, manufacturer code
Certificates:	Certificate acc. EN 10204-3.1
Option:	Electropolishing and further dimensions available on request
Remarks:	Technical contents are subject to change

Dimensions for Excentric Reducer							
Sizes	AD	ad	s1	s2	L	z	Item No.
acc. DIN 11866 Series C (ASME BPE 2009)							
NW 1/2" - 3/8"	12.70	9.53	1.65	0.89	47.63	1.59	256.127.095.DOCK
NW 3/4" - 3/8"	19.05	9.53	1.65	0.89	50.80	4.76	256.190.095.DOCK
NW 3/4" - 1/2"	19.05	12.70	1.65	1.65	53.98	3.18	256.190.127.DOCK
NW 1" - 1/2"	25.40	12.70	1.65	1.65	63.50	6.35	256.254.127.DOCK
NW 1" - 3/4"	25.40	19.05	1.65	1.65	53.98	3.18	256.254.190.DOCK
NW 1 1/2" - 1/2"	38.10	12.70	1.65	1.65	80.00	12.70	256.381.127.DOCK
NW 1 1/2" - 3/4"	38.10	19.05	1.65	1.65	76.20	9.53	256.381.190.DOCK
NW 1 1/2" - 1"	38.10	25.40	1.65	1.65	63.50	6.35	256.381.254.DOCK
NW 2" - 1"	50.80	25.40	1.65	1.65	85.73	12.70	256.508.254.DOCK
NW 2" - 1 1/2"	50.80	38.10	1.65	1.65	63.50	6.35	256.508.381.DOCK
NW 2 1/2" - 1"	63.50	25.40	1.65	1.65	100.00	19.05	256.635.254.DOCK
NW 2 1/2" - 1 1/2"	63.50	38.10	1.65	1.65	85.73	12.70	256.635.381.DOCK
NW 3" - 1 1/2"	76.20	38.10	1.65	1.65	107.95	19.05	256.762.381.DOCK
NW 3" - 2"	76.20	50.80	1.65	1.65	85.73	12.70	256.762.508.DOCK
NW 3" - 2 1/2"	76.20	63.50	1.65	1.65	66.68	6.35	256.762.635.DOCK
NW 4" - 2"	101.60	50.80	2.11	1.65	130.18	25.40	256.102.508.DOCK
NW 4" - 2 1/2"	101.60	63.50	2.11	1.65	107.95	19.05	256.102.635.DOCK
NW 4" - 3"	101.60	76.20	2.11	1.65	98.43	12.70	256.102.762.DOCK



Inline Sight Glass

Product group:	Welding-Fittings
Description:	Inline Sight Glass
Valid standards:	Pipe connection acc. DIN 11866 Series A (DIN 11850) / Series B (ISO 1127)
Material:	Stnr.-W. 1.4435 BN2 (Fe < 0.5%) acc. EN 10088, Borosilicate (DURAN Cylinder) O-Rings: EPDM
Permissible sterilization temperature:	135°C
Version / Surface quality:	Surface, external, Bright finish, tarnish removed Surface, internal, sanded and polished Ra internal < 0.4 µm
Pipe-Hygiene Classes:	H 3 / H 4 acc. DIN 11866
Marking:	Material number, melt number, manufacturer code
Certificates:	Certificate acc. EN 10204-3.1
Option:	Electropolishing. Operating temperature can be increased in special cases to 100°C (medium-dependent).
Remarks:	Technical contents are subject to change

Dimensions for Inline Sight Glass										
Sizes	d1	d2	L1	Thread	SW	Nut	max. working- pressure in bar	max. working- * temperature	Item No.	
acc. DIN 11866 Series A (DIN 11850)										
DIN 8	10.0	8.0	80.0	M 22 x 1.5	22.0	-	19.1	80° C	249.001.008	
DIN 10	12.0	10.0	80.0	M 22 x 1.5	27.0	-	18.9	80° C	249.001.010	
acc. DIN 11866 Series B (ISO 1127)										
ISO DN 8	13.5	10.3	90.0	M 22 x 1.5	27.0	-	18.7	80° C	249.000.008	
ISO DN 10	17.2	14.0	90.0	M 26 x 1.5	32.0	-	14.1	80° C	249.000.010	
ISO DN 15	21.3	18.1	100.0	M 30 x 2.0	36.0	-	10.8	80° C	249.000.015	
ISO DN 20	26.9	23.7	110.0	M 36 x 2.0	-	48.0	9.6	80° C	249.000.020	
ISO DN 25	33.7	29.7	120.0	M 42 x 2.0	-	52.0	7.9	80° C	249.000.025	
ISO DN 32	42.4	38.4	130.0	M 52 x 2.0	-	62.0	6.9	80° C	249.000.032	
ISO DN 40	48.3	44.3	140.0	M 56 x 2.0	-	65.0	7.0	80° C	249.000.040	
ISO DN 50	60.3	56.3	140.0	M 74 x 2.0	-	80.0	6.4	80° C	249.000.050	

All lengths in millimeters (if not specified differently).

Inline Sight Glass

Product group:	Welding-Fittings
Description:	Inline Sight Glass with TC-Ends or other connections
Valid standards:	TC - Version: DIN 32676 with pipe connection acc. DIN 11866 Series B (ISO 1127) Other connections acc. Connectors standard or as specified.
Material:	Strn.-W. 1.4435 BN2 (Fe < 0.5%) acc. EN 10088, Borosilicate (DURAN Cylinder) O-Rings: EPDM
Permissible sterilization temperature:	135°C
Version / Surface quality:	Surface, external, Bright finish, tarnish removed Surface, internal, sanded and polished Ra internal < 0.4 µm
Pipe-Hygiene Classes:	H 3 / H 4 acc. DIN 11866
Marking:	Material number, melt number, manufacturer code
Certificates:	Certificate acc. EN 10204-3.1
Option:	Electropolishing. Sanded. Operating temperature can be increased in special cases to 100°C (medium-dependent). Available in screwed form on request.
Remarks:	Technical contents are subject to change

