

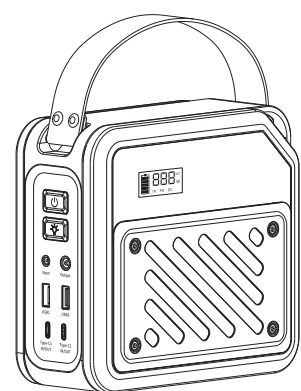
128g铜板纸

折页90x130mm

单黑双面印刷

Newsmy

P72 Portable Power Station



User Manual

Ver: NM-P72-FY-2406

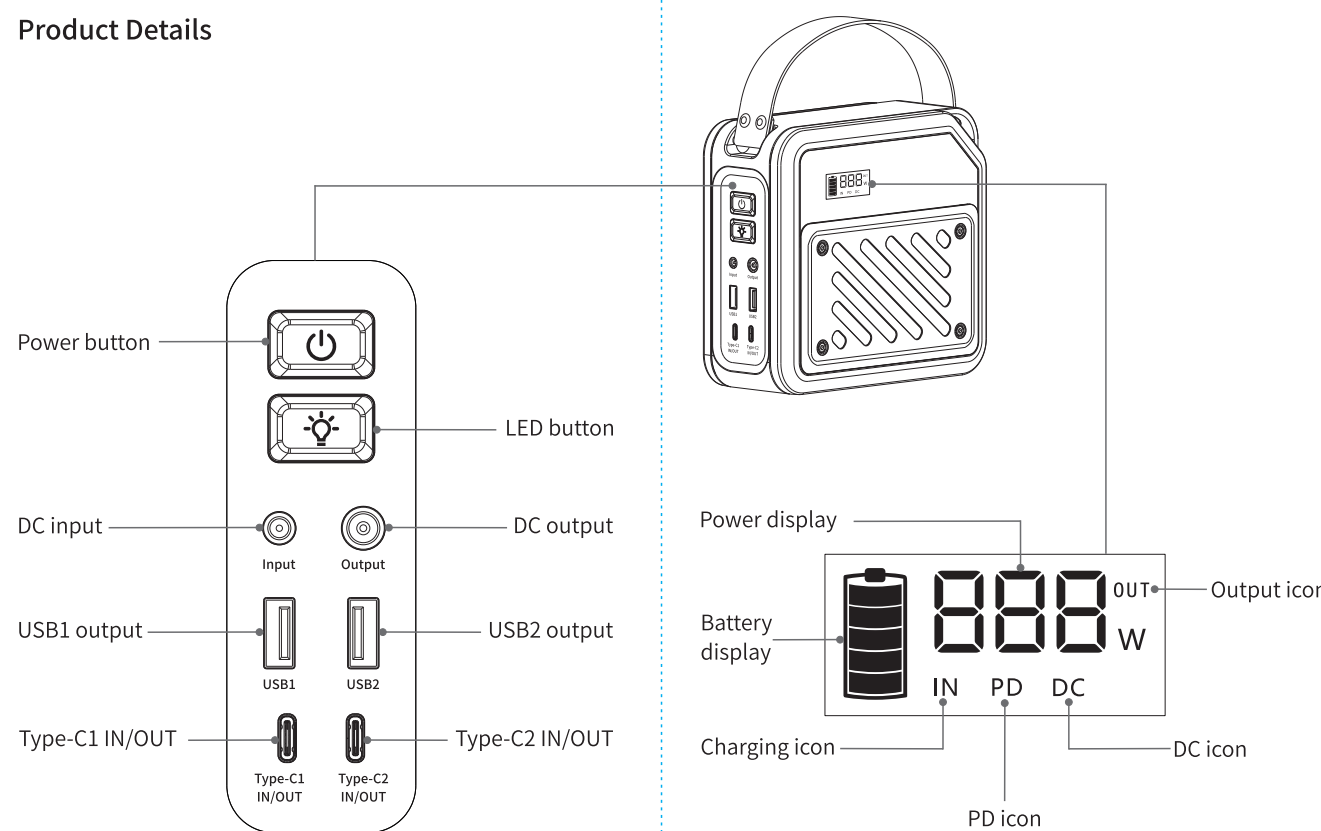
Thank you for choosing our products!

Please read the instructions carefully, follow the instructions in the operation manual, and use the product correctly, so that you can familiarize yourself with the product more conveniently and quickly!

Attention

- 1.If you do not use the product for a long time, you are advised to keep the battery at a certain capacity and charge the product at least once every three months.
- 2.During use or charging, if the device heats slightly, it is normal, not a failure.
- 3.It is recommended to use this product at room temperature and stay away from humidity, high temperature and fire sources.
- 4.Please keep the product in a dry place, away from wet and corrosive materials.
- 5.Do not scrub with rough chemicals, such as soap or detergent.
- 6.If you find that the battery is swollen, leaking or has an odor, please stop using it immediately.
- 7.Be careful to avoid falling the product when using it.
- 8.Please place the product out of the reach of children. If children need to use the portable power station, it needs to be operated by parents according to the instruction manual.
- 9.Please do not litter or burn the abandoned portable power station. Please take care of the environment.

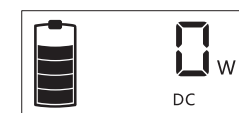
Product Details



How to use

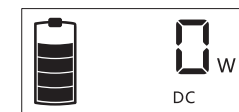
1.Power on

Long press the Power button for 2 seconds to turn on the power station; The LED display lights up, showing the current battery and power.



2.Power off

- ① Long press the Power button for 2 seconds to turn off the power station;
- ② No operation or no power display after booting, automatic shutdown after 2 hours;

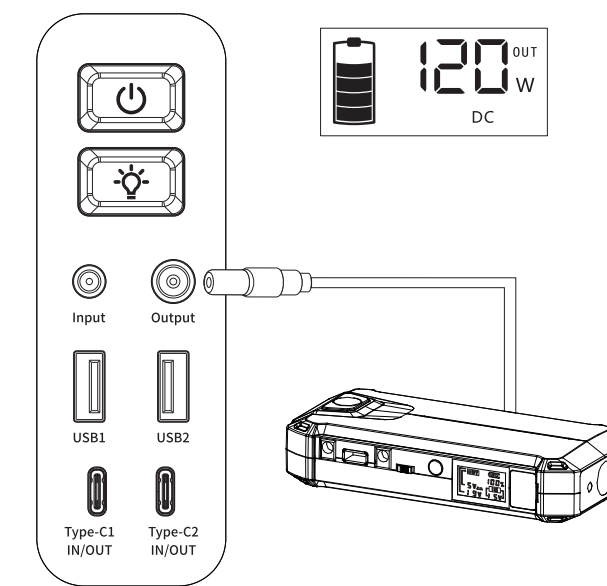


3.LED light button

When the power is on, press the LED button to turn on the LED light; Press the button again to switch to different modes- strong light, soft light, flash, SOS and off mode.

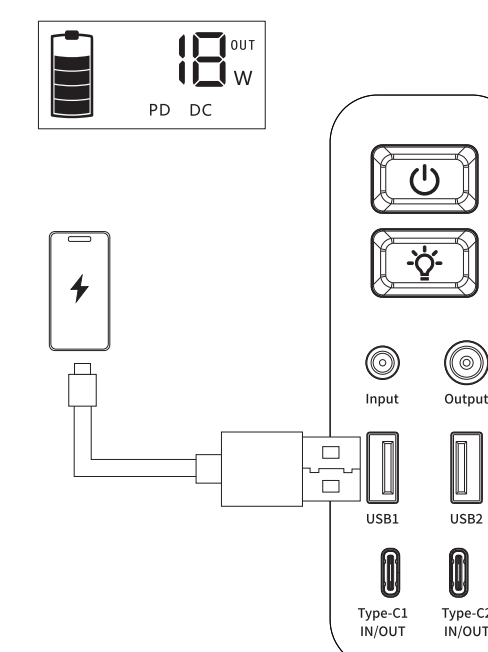
4.DC output

When the power is on, connect the device to DC Output port.



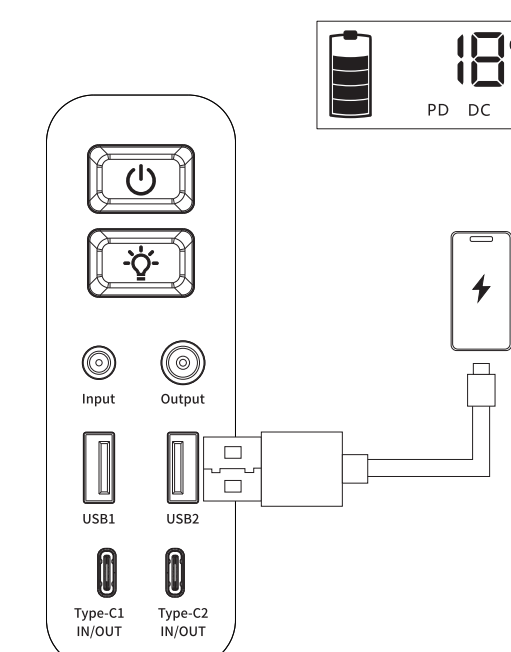
5.USB1 output

When the power is on, connect the device to the USB1 port.



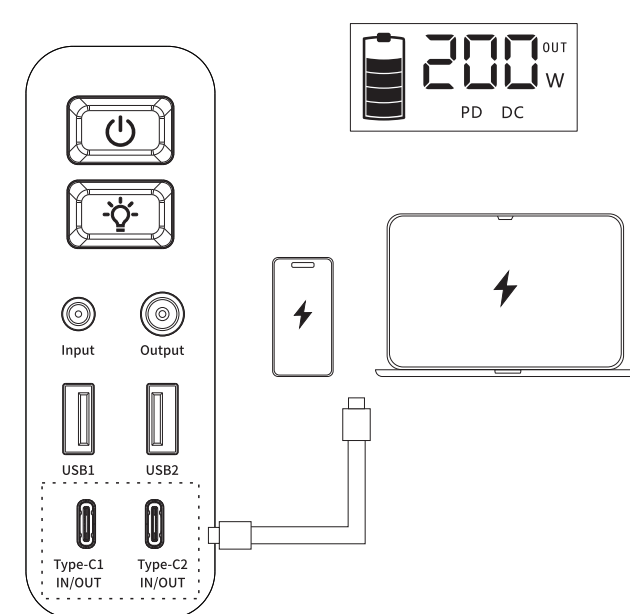
6.USB2 output

The USB2 port supports plug-and-play, connect the device to the USB2 port to start charging.



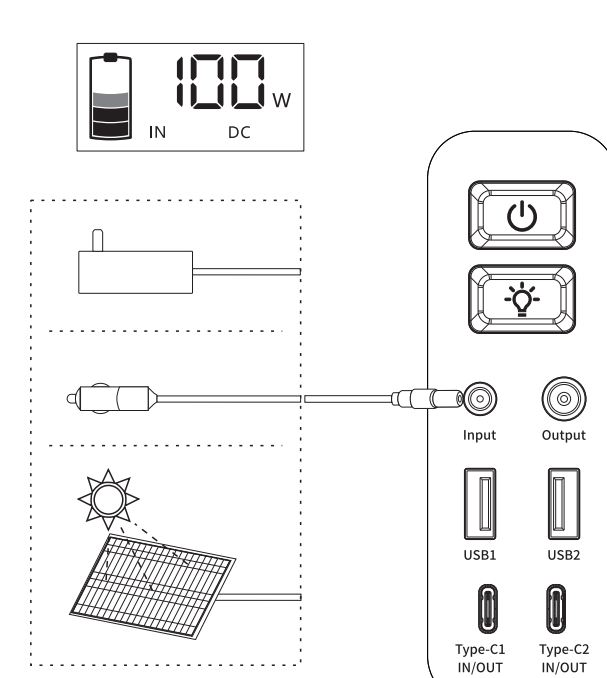
7.Type-C output

The Type-C port supports plug-and-play, connect the device to the Type-C port to start charging.



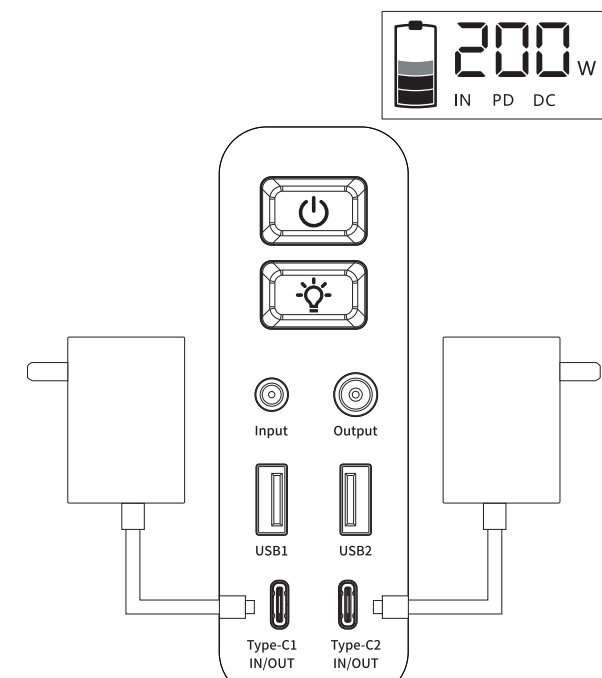
8.Recharge through DC input

Connect the power adapter/car charger/solar panel to the DC input port to begin recharge.



9.Recharge through Type-C PD input

Connect the PD adapter to the Type-C input port to begin recharge.



Package content

Portable power station *1	
C-C charging cable *1	
User Manual *1	

Specification

Model	P72
Battery capacity	270Wh, 11.25V 24Ah
DC input	12-25V=5A (MPPT Max 100W)
DC output	12V=10A (Voltage varies with battery voltage, Max120W)
USB output	5V=3A/9V=2A/12V=1.5A (QC3.0)
Type-C input	5V=3A/9V=3A/12V=3A/15V=3A/20V=5A (PD100W)
Type-C output	5V=3A/9V=3A/12V=3A/15V=3A/20V=5A (PD100W)
DC input/Type-C1 input & Type-C2 input	Max 200W

Port	USB1	USB2	Type-C1	Type-C2	DC
Single-port output	18W	---	---	---	---
	---	18W	---	---	---
	---	---	100W	---	---
	---	---	---	100W	---
Dual-port output	18W	18W	---	---	---
	18W	---	100W	---	---
	18W	---	---	100W	---
	---	18W	100W	---	---
	---	7.5W	---	7.5W	---
	---	---	100W	100W	---
	---	---	100W	30W	120W
	---	---	---	---	120W

Port	USB1	USB2	Type-C1	Type-C2	DC
Three-port output	18W	18W	100W	---	---
	18W	7.5W	---	7.5W	---
	18W	---	100W	100W	---
	18W	---	100W	---	120W
Four-port output	18W	7.5W	100W	7.5W	---
	18W	18W	100W	---	120W
	18W	7.5W	---	7.5W	120W
	18W	---	100W	30W	120W
Five-port output	18W	7.5W	100W	7.5W	120W

Failure code

Code	Description	Remove failure code
E01	DC overload/short circuit	After overload/short circuit removed, short press power button
E05	Type-C/USB2 overload/short circuit	After overload/short circuit removed, reconnect it
E06	Battery temperature is too high	Automatically clear the failure code after the temperature returns to normal.
E07	Battery temperature is too low	Automatically clear the failure code after the temperature returns to normal.
E08	USB1 overload/short circuit	Automatically clear the failure code after overload/short circuit removed
E09	DC charging over-voltage	Automatically clear the failure code after the voltage returns to normal
E10	DC charging low voltage	Automatically clear the failure code after the voltage returns to normal
E11	Battery charge/discharge overheated	Automatically clear the failure code after the temperature returns to normal

Tips: Please read the instructions carefully before use

Manufacturer: Hunan Newsmy New Energy Technology Co.,Ltd
 Add: Room 405, 4F, R & D Building, Newman Science and Technology Park, 128 Lixiang East Road, Changsha Economic and Technological Development Zone, China (Hunan) Free Trade Area Experimental Zone
 Web: www.newsmypower.com
 Email: service@newsmypower.com

Follow Us On Social Media:
 IG: @newsmy_power
 FB: @Newsmypower
 TT: @newsmypower_official



MADE IN CHINA