

Ø10

Ø21

**DI.140.365.250N**

T-MOTION SPRING

**Material Information;**

Rod: Ø10 | Tube: Ø21

Rod Material | Surface: **C35 STEEL | BLACK NITRATED**

Tube Material | Surface: **STEEL | BLACK PAINTED**

Rod Side Conn. Material | Surface: **Steel | Black Painted**

Tube side Conn. Material | Surface: **Steel | Black Painted**

**Functional Instructions;**

Dampening Period: **St**

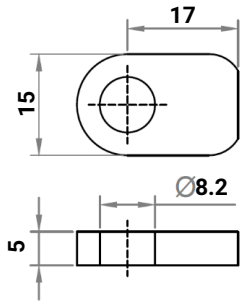
Opening Speed: **St**

**Tolerances;**

L: +2 / -2

S: +5 / -2

F1: +25N / -12N

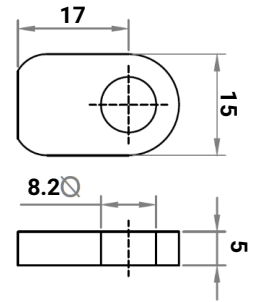


Type	R. Conn.	T. Conn.	Stroke	Length	F1
------	----------	----------	--------	--------	----

S21 K005 K005 140 365 250N

**Notes;**

-



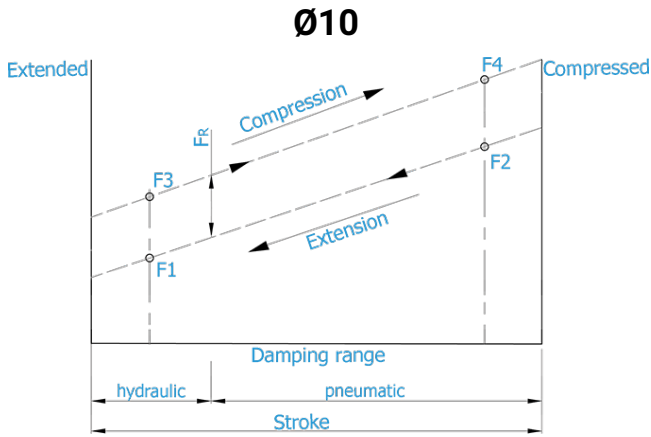
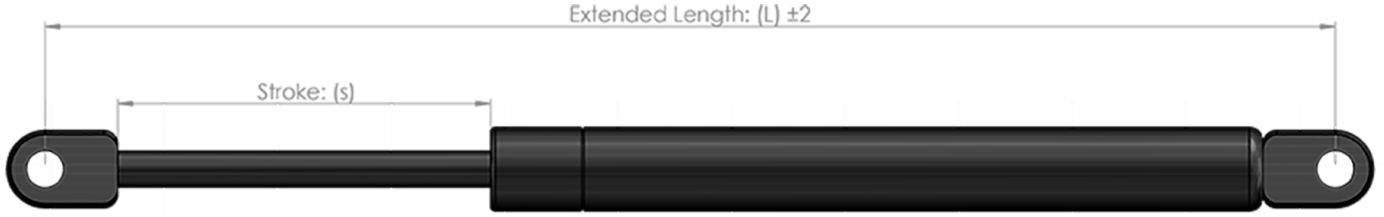
**TUNATEK OTM. SAN. VE TİC. LTD. ŞTİ.**

Alaaddinbey Mah. 627. Sk No:4 , Nilüfer 16120, Bursa - TURKEY

Çekirge VD: 8620262422

Tel: +90 224 211 44 73 / Fax: +90 224 211 44 74

E-mail: info@tunalift.com



**DI.140.365.450N**  
T-MOTION SPRING

**Material Information;**

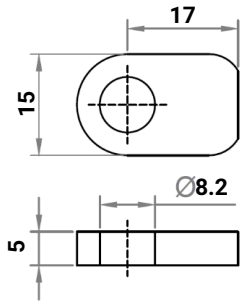
Rod:  $\varnothing 10$  | Tube:  $\varnothing 21$   
 Rod Material | Surface: **C35 STEEL | BLACK NITRATED**  
 Tube Material | Surface: **STEEL | BLACK PAINTED**  
 Rod Side Conn. Material | Surface: **Steel | Black Painted**  
 Tube side Conn. Material | Surface: **Steel | Black Painted**

**Functional Instructions;**

Dampening Period: **St**  
 Opening Speed: **St**

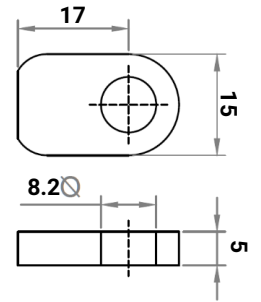
**Tolerances;**

L: +2 / -2      S: +5 / -2      F1: +45N / -22N



Type	R. Conn.	T. Conn.	Stroke	Length	F1
S21	K005	K005	140	365	450N

**Notes;**  
-



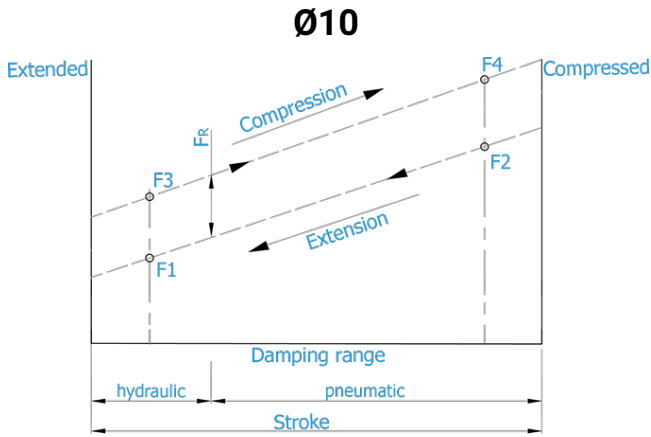
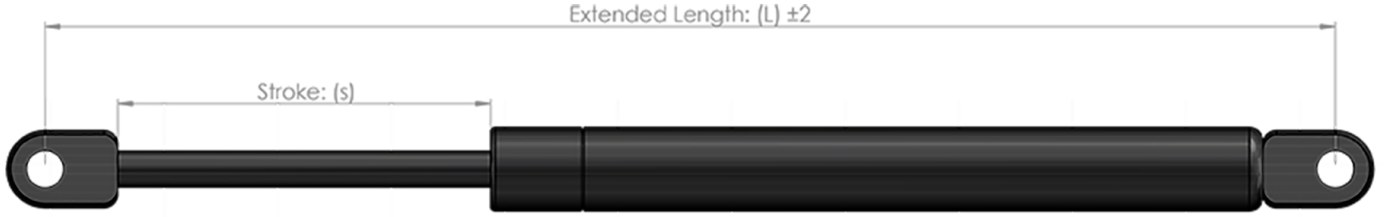
**TUNATEK OTM. SAN. VE TİC. LTD. ŞTİ.**

Alaaddinbey Mah. 627. Sk No:4 , Nilüfer 16120, Bursa - TURKEY

Çekirge VD: 8620262422

Tel: +90 224 211 44 73 / Fax: +90 224 211 44 74

E-mail: info@tunalift.com



Ø10

Ø21

**DI.140.365.750N**

T-MOTION SPRING

**Material Information;**

Rod: Ø10 | Tube: Ø21

Rod Material | Surface: **C35 STEEL | BLACK NITRATED**

Tube Material | Surface: **STEEL | BLACK PAINTED**

Rod Side Conn. Material | Surface: **Steel | Black Painted**

Tube side Conn. Material | Surface: **Steel | Black Painted**

**Functional Instructions;**

Dampening Period: **St**

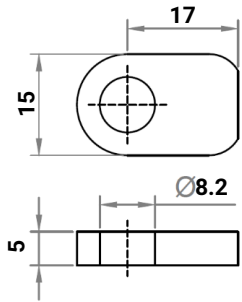
Opening Speed: **St**

**Tolerances;**

L: +2 / -2

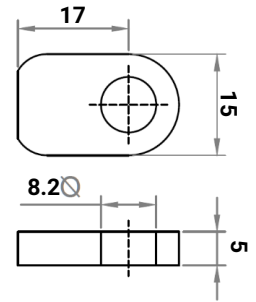
S: +5 / -2

F1: +75N / -37N



Type	R. Conn.	T. Conn.	Stroke	Length	F1
S21	K005	K005	140	365	750N

**Notes;**  
-



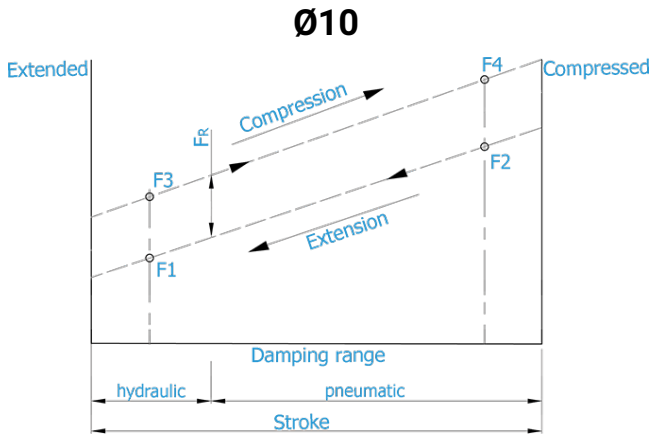
**TUNATEK OTM. SAN. VE TİC. LTD. ŞTİ.**

Alaaddinbey Mah. 627. Sk No:4 , Nilüfer 16120, Bursa - TURKEY

Çekirge VD: 8620262422

Tel: +90 224 211 44 73 / Fax: +90 224 211 44 74

E-mail: info@tunalift.com



Ø10

Ø21

**DI.140.365.1300N**

T-MOTION SPRING

**Material Information;**

Rod: Ø10 | Tube: Ø21

Rod Material | Surface: **C35 STEEL | BLACK NITRATED**

Tube Material | Surface: **STEEL | BLACK PAINTED**

Rod Side Conn. Material | Surface: **Steel | Black Painted**

Tube side Conn. Material | Surface: **Steel | Black Painted**

**Functional Instructions;**

Dampening Period: **St**

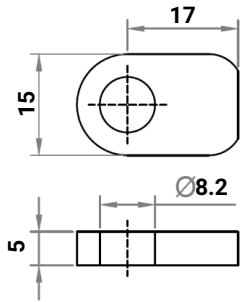
Opening Speed: **St**

**Tolerances;**

L: +2 / -2

S: +5 / -2

F1: +130N / -65N

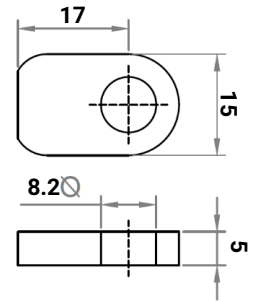


Type	R. Conn.	T. Conn.	Stroke	Length	F1
------	----------	----------	--------	--------	----

S21 K005 K005 140 365 1300N

**Notes;**

-



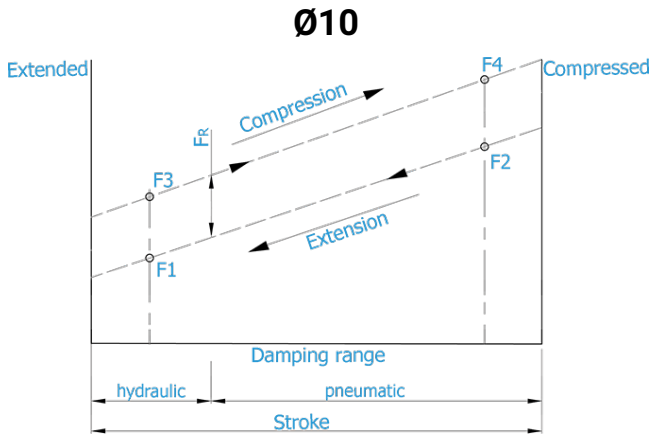
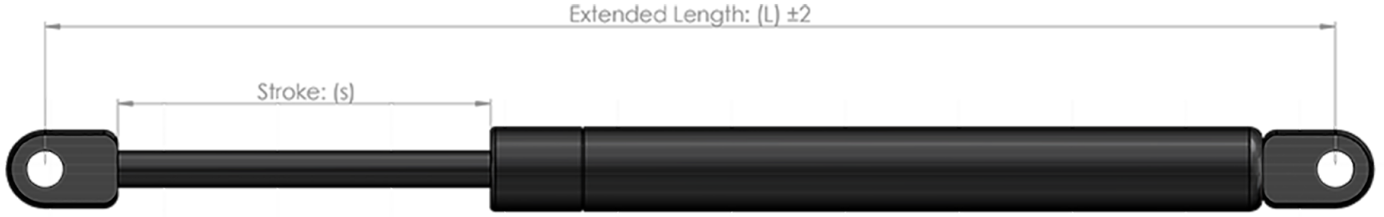
**TUNATEK OTM. SAN. VE TİC. LTD. ŞTİ.**

Alaaddinbey Mah. 627. Sk No:4 , Nilüfer 16120, Bursa - TURKEY

Çekirge VD: 8620262422

Tel: +90 224 211 44 73 / Fax: +90 224 211 44 74

E-mail: info@tunalift.com



Ø10

Ø21

**DI.140.365.1500N**

T-MOTION SPRING

**Material Information;**

Rod: Ø10 | Tube: Ø21

 Rod Material | Surface: **C35 STEEL | BLACK NITRATED**

 Tube Material | Surface: **STEEL | BLACK PAINTED**

 Rod Side Conn. Material | Surface: **Steel | Black Painted**

 Tube side Conn. Material | Surface: **Steel | Black Painted**
**Functional Instructions;**

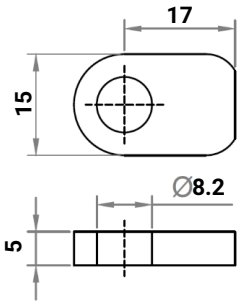
 Dampening Period: **St**

 Opening Speed: **St**
**Tolerances;**

L: +2 / -2

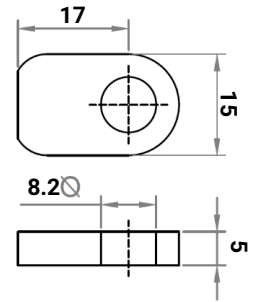
S: +5 / -2

F1: +150N / -75N



Type	R. Conn.	T. Conn.	Stroke	Length	F1
S21	K005	K005	140	365	1500N

**Notes;**  
-


**TUNATEK OTM. SAN. VE TİC. LTD. ŞTİ.**

Alaaddinbey Mah. 627. Sk No:4, Nilüfer 16120, Bursa - TURKEY

Çekirge VD: 8620262422

Tel: +90 224 211 44 73 / Fax: +90 224 211 44 74

E-mail: info@tunalift.com