

Power off the printer, then hold down the 【FEED】 button and press the power button at the same time. Wait until the power indicator & 【ERROR】 led are both on, and then 【ERROR】 led goes out, after, 【ERROR】 led goes on again, then loosen the 【FEED】 button, the density setting status will be printed out. (It has three levels setting for printing density, it is a circle Low level → Middle level → High level → Low level.... Please switch the density status by repeating operation presented above.)	Set printing density
Power off the printer, hold down the 【MODE】 button and press the power button at the same time. Wait until the power indicator & 【ERROR】 led are both on, and then 【ERROR】 led goes out, then loosen the 【MODE】 button. The printer turns into the hexadecimal printing mode and print the presentation. Way to quit hexadecimal printing: The way to quit hexadecimal printing mode is switch off the printer.	Hexadecimal printing



Download Password : 1234
Android BT APP

Part 2 : Operation instructions

1. Open the Android APP

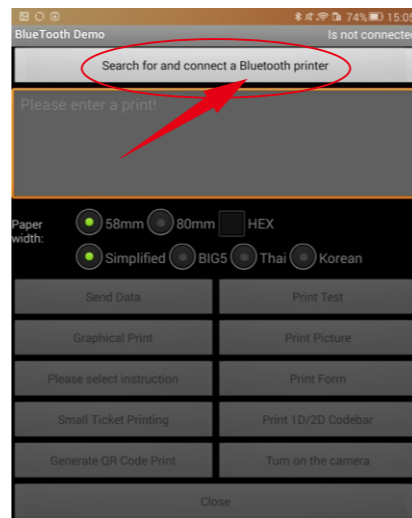
If you installed a Bluetooth demo, click "POSPrinter-BT"

If you installed a USB demo, click "POSPrinter-USB"

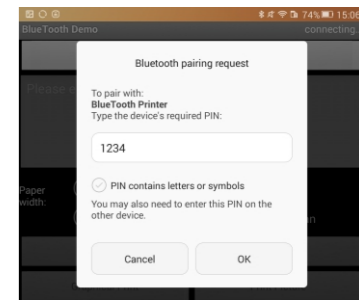
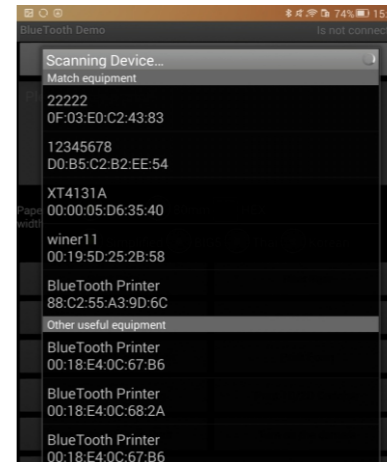
If you installed a demo of network port or WIFI, click "POSPrinter-WIFI"



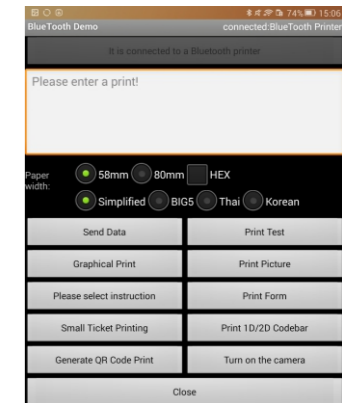
2. After opening the DEMO, you need to connect the printer.
When the port what you connected is Bluetooth
Click "Search and connect Bluetooth printer"



If you need to search for new printers again, click "Scanning Device" and select the printers you want to add.



The connection is successful, as is shown:



5. Operating Manual for Android OS

Part 1 :

Find the app from the CD driver, Then follow the path : "Android SDK---BLUETOOTHDEMO ----bin----BT-POSPrinter.APK", and install it into your Android device.

Or scan the below QR code to download the Android app:

10

11

12

13

14

Enter the pairing code, the default is 1234 or 0000, click "OK".

6. Operating Manual for IOS APP

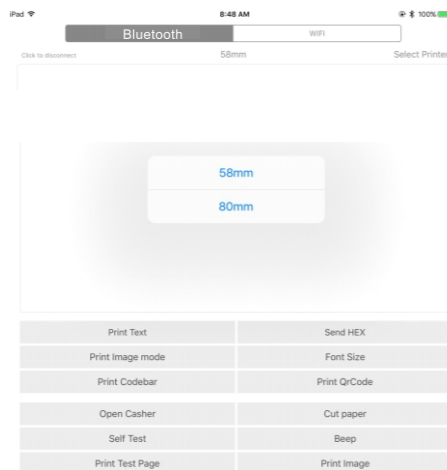
1. Download the Test Tools "POS-PrinterV1.0" from App Store, as below:



2. Turn on the Bluetooth setting of IOS device, then click "POS-Printer":

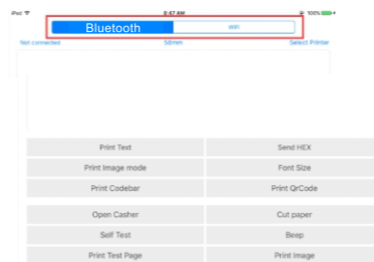


3. Into the App of "POS-Printer", select the paper width as below:

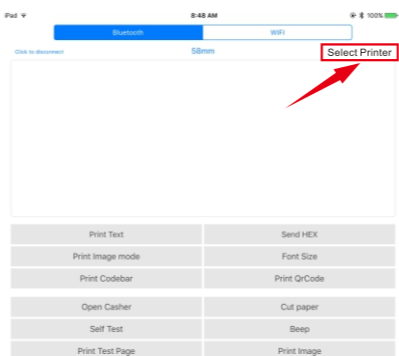


(Image 3)

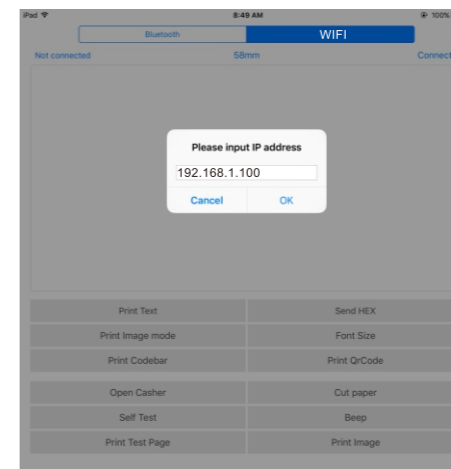
4. Select the way of communication of printers, "Bluetooth" or "WIFI":



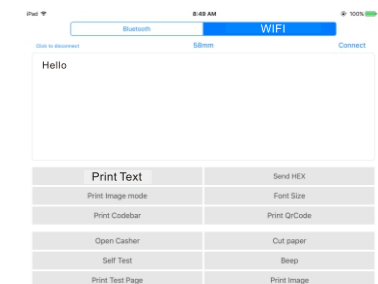
5. If connect with Bluetooth, then you can click "Select Printer" first, you will search the "Bluetooth Printer" (the default name of printer is Bluetooth Printer), click it to be connected.



6. If connect with WIFI, please make sure that your device WIFI is connected with printer (both of them in the same Network segment). And then click the "Connect", enter into the printer IP :



7. If above steps are successful, then you can print text to have a test:



8. Other features of this APP:

- Send HEX: In the text box, enter the hexadecimal data, click "Send HEX", then can send text box hexadecimal data to the printer.
- Print Image mode: input data in the text box, click "Print Image mode", you will be able to convert the contents of the text box into an image printed
- Open Casher: If your printer is connected with the cash drawer, click "open casher", the drawer will be opened (portable printers without drawer interface, this feature does not work).
- Cut paper: After click on it, the paper will be feed out and cut (portable printers, 58 series of printers without cutter, this feature does not work).
- Self Test: Click the "self-test", the printer will print out a self-test page (because the Bluetooth printer has been connected to the device, then the Bluetooth name or MAC address will be not displayed in the self-test page).
- Beep: Click the "Beep", the printer will beep sound (portable printers, 58 series of printers without buzzer, this feature does not work).
- Print test page: Click the "Print Test Page", the text will print a section of the test, to confirm that the printer

9. The applicable version: can be compatible with IOS6.0 or above versions.

15

16

17

18

19