



### QUICK SELECTION / Selezione veloce

input speed ( $n_1$ ) = 1400 min<sup>-1</sup>

Output Speed $n_2$ [min <sup>-1</sup> ]	Ratio $i$	Motor power $P_{1M}$ [kW]	Output torque $M_{2M}$ [Nm]	Service factor f.s.	Nominal power $P_{1R}$ [kW]	Nominal torque $M_{2R}$ [Nm]	Available B5 motor flanges				Available B14 motor flanges				Output Shaft 	Ratios code 
							C	D	E	F	R	T	U	V		
							71	80	90	100 112	80	90	100 112	132		
213	<b>6.57</b>	5.5	237	1.2	<b>6.74</b>	<b>290</b>	B								3018	standard ø35  On request ø30 ø40
185	<b>7.56</b>	5.5	272	1.1	<b>6.06</b>	<b>300</b>	B								3016	
159	<b>8.82</b>	5.5	318	1.2	<b>6.58</b>	<b>380</b>	B								3014	
113	<b>12.39</b>	5.5	446	0.9	<b>4.93</b>	<b>400</b>	B								2018	
98	<b>14.24</b>	4	373	1.1	<b>4.50</b>	<b>420</b>	B								2016	
84	<b>16.63</b>	4	435	1.1	<b>4.55</b>	<b>495</b>	B								2014	
73	<b>19.25</b>	4	504	1.0	<b>3.97</b>	<b>500</b>	B								1616	
64	<b>21.78</b>	3	428	1.2	<b>3.54</b>	<b>505</b>	B								1318	
62	<b>22.48</b>	3	442	1.1	<b>3.36</b>	<b>495</b>	B								1614	
56	<b>25.04</b>	3	492	1.0	<b>3.05</b>	<b>500</b>	B								1316	
47.9	<b>29.23</b>	2.2	421	1.2	<b>2.59</b>	<b>495</b>	B								1314	
45.7	<b>30.65</b>	2.2	442	1.1	<b>2.5</b>	<b>500</b>	B								1116	
39.1	<b>35.78</b>	2.2	515	1.0	<b>2.1</b>	<b>430</b>	B								1114	
36.3	<b>38.55</b>	1.5	379	1.2	<b>1.8</b>	<b>455</b>	B								818	
31.6	<b>44.32</b>	1.5	435	1.1	<b>1.7</b>	<b>500</b>	B								816	
27.1	<b>51.74</b>	1.5	508	1.0	<b>1.5</b>	<b>495</b>	B								814	
22.9	<b>61.03</b>	1.1	440	1.0	<b>1.1</b>	<b>420</b>	B								616	
19.6	<b>71.25</b>	1.1	513	0.8	<b>0.9</b>	<b>430</b>	B								614	

The dynamic efficiency is **0.96** for all ratios

Motor Flanges Available  
Flange Motore Disponibili

B) Supplied with Reduction Bushing  
Fornito con Bussola di Riduzione

B) Available on Request without reduction bushing  
Disponibile a Richiesta senza Bussola di Riduzione

C) Motor Flange Holes Position  
Posizione Fori Flangia Motore

**EN** Unit **F52A** is supplied with synthetic oil for lifetime lubrication, no maintenance is necessary. See table 1 for lubrication and recommended quantity. In table 2 please see possible radial loads and axial loads on the gearbox. For complete documentation please visit our web site.

**I** Il riduttore **F52A** viene fornito completo di olio sintetico per la lubrificazione permanente e non necessita di alcuna manutenzione. Vedi tab.1 per oli e quantità consigliati. In tab.2 sono presenti i carichi radiali e assiali applicabili al riduttore. Per la documentazione completa consulta il nostro sito.

**D** Das Getriebe **F52A** ist mit synthetischem Öl gefüllt und ist lebensdauergeschmiert. In Tabelle 1 ist die Schmiermenge und das empfohlene Schmiermittel angegeben. In Tabelle 2 sind die zulässigen Radial- und Axialbelastungen des Getriebes aufgeführt. Die komplette Dokumentation, Wartungs- und Inbetriebnahmeanleitungen finden Sie unter.

**E** El reductor tamaño **F52A** se suministra, lubricado de por vida con aceite sintético y no requieren mantenimiento alguna. Ver tabla 1, para cantidades y aceites recomendados. En la tabla 2, se encuentran las cargas radiales y axiales admitidas por el reductor. Para documentación completa, consultar nuestra Web.

Standard supplied	For these mounting position specify in the order or add oil Per queste posizioni specificare in fase d'ordine o aggiungere olio				
1.80 LT	1.20 LT	0.90 LT	1.25 LT	1.80 LT	1.25 LT
<b>AGIP</b> Teliem VSF 320	<b>BP</b> Energol SGXP220	<b>SHELL</b> Tivela Oil WB	<b>KLUBER</b> Syntheso D220 EP	<b>MOBIL</b> Glygoyle 30	

tab. 1

**Output shaft**  
Albero di uscita

$F_{eq} = FR \cdot \frac{69.1}{X+39.1}$

$n_2$	FA	FR	$n_2$	FA	FR	$n_2$	FA	FR
200	420	2100	85	568	2376	15	960	4800
140	466	2328	70	590	2952	-	-	-
120	554	2772	40	706	3528	-	-	-

**Input shaft**  
Albero in entrata

$n_1$	FA	FR
1400	300	1500
900	377	1884
500	493	2466

tab. 2

SELECT THIS TYPE AND THIS SPECIFIC SIZE ON THE WEB PAGES TO GET COMPLETE TECHNICAL DATA.  
Selezionare tipo e gandezza specifica nel sito web per la documentazione completa.

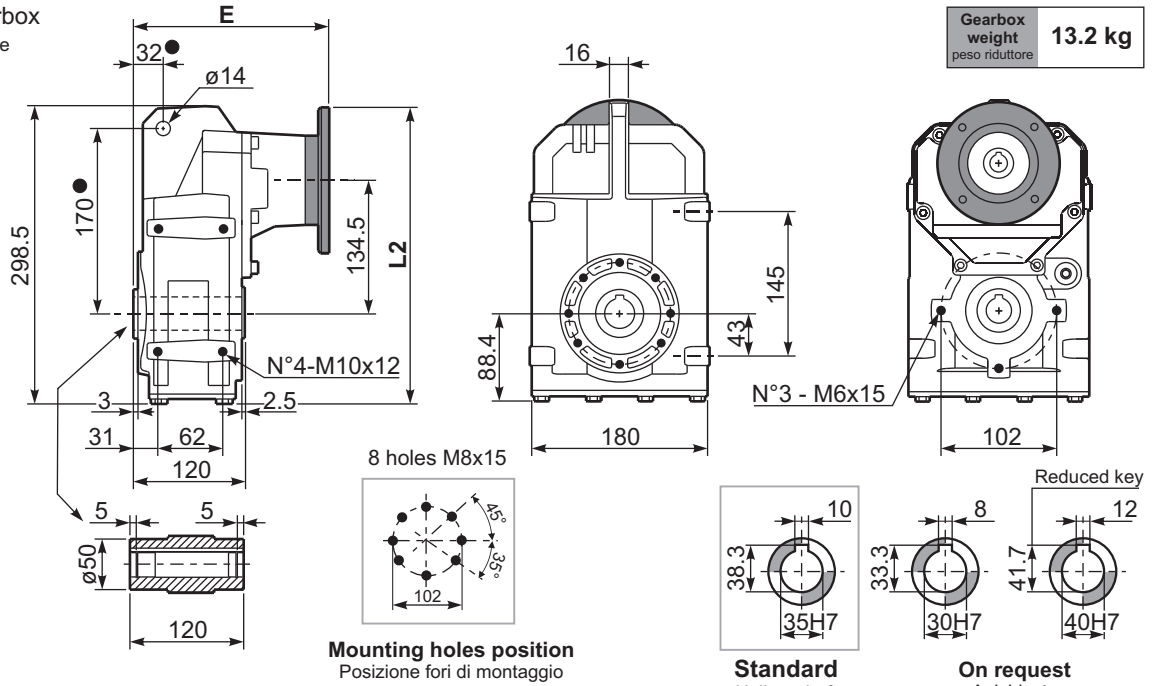
**PF52AC...**

Basic gearbox  
Riduttore base

Gearbox weight  
peso riduttore **13.2 kg**

**Motor Flange**

Motor Flange	E	L2
71 B5	201.5	303
80/90 B5	203.5	323
100/112B5	203.5	348
80 B14	202	283.5
90 B14	205	294
100/112B14	201.5	303
132B14	220	323

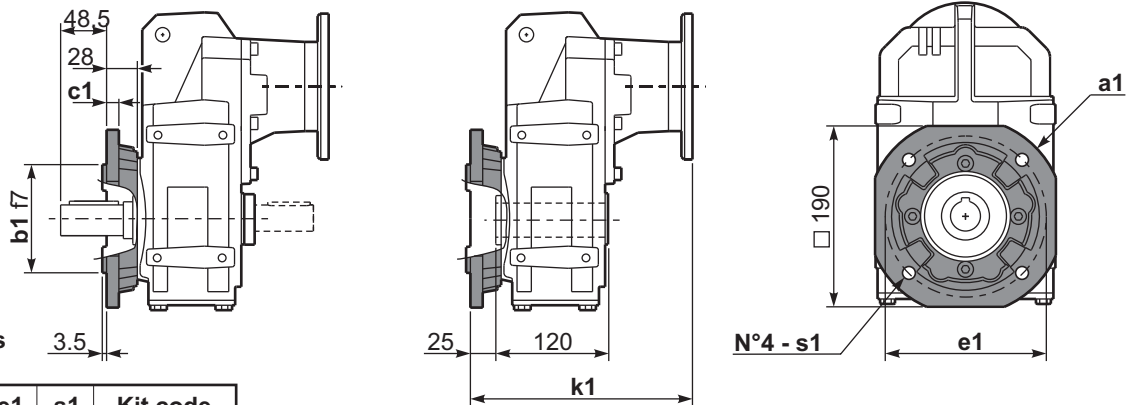


● Available torque arms, see our web site  
Bracci di reazione disponibili, consulta il nostro sito web

**PF52A...-F...**

Output flange  
Flangia uscita

Motor Flange	E
71 B5	226.5
80/90 B5	228.5
100/112B5	228.5
80 B14	227
90 B14	230
100/112B14	226.5
132B14	245



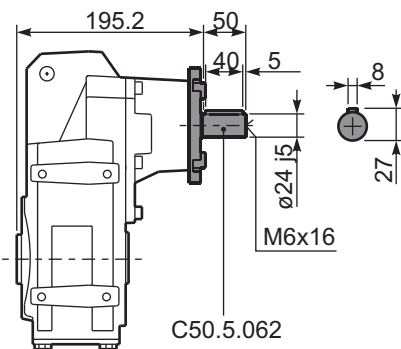
**Available output flanges**  
Flange di uscita

a1 ø	b1	c1	e1	s1	Kit code
200*	130	10	165	11	KF50.9.010
250	180	15	215	13.5	KF50.9.011

\* Standard output flange / Flangia uscita standard

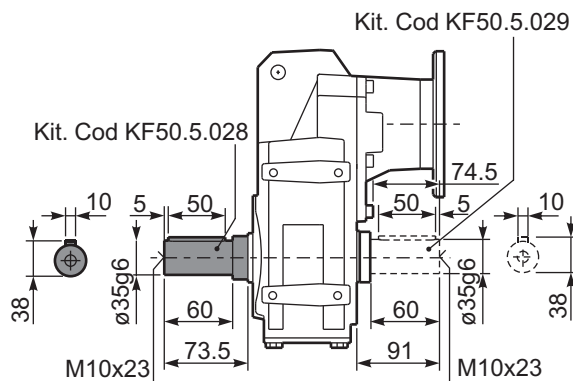
**RF52AC...**

Input Shaft  
Albero in entrata



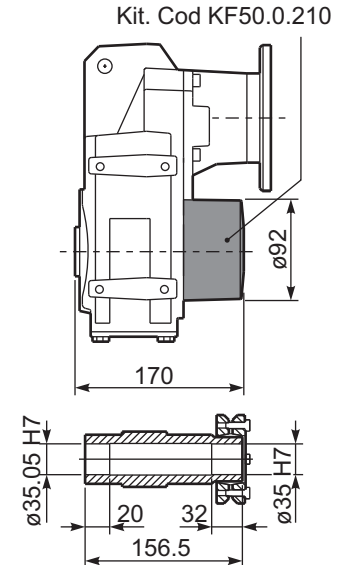
**PF52AA/B...**

Single and Double output shaft  
Albero uscita semplice e doppio



**PF52AD/S...**

Shrink disk  
Calettatore





### QUICK SELECTION / Selezione veloce

input speed ( $n_1$ ) = 1400 min<sup>-1</sup>

Output Speed $n_2$ [min <sup>-1</sup> ]	Ratio $i$	Motor power $P_{1M}$ [kW]	Output torque $M_{2M}$ [Nm]	Service factor f.s.	Nominal power $P_{1R}$ [kW]	Nominal torque $M_{2R}$ [Nm]	Available B5 motor flanges				Available B14 motor flanges				Output Shaft 	Ratios code 	
							B	C	D	E	Q	R	T	U			
							63	71	80	90	71	80	90	100 112			
35.6	<b>39.30</b>	1.5	374	1.4	<b>2.0</b>	<b>510</b>	B				C	C			281316	standard ø35  On request ø30 ø40	-
30.5	<b>45.93</b>	1.5	437	1.1	<b>1.7</b>	<b>500</b>	B				C	C			281314		
22.6	<b>61.89</b>	1.1	432	1.2	<b>1.3</b>	<b>530</b>	B				C	C			191318		
19.7	<b>71.16</b>	1.1	497	1.0	<b>1.1</b>	<b>510</b>	B				C	C			191316		
17	<b>82.48</b>	0.75	392	1.3	<b>1.0</b>	<b>510</b>	B				C	C			171316		
14.5	<b>96.82</b>	0.75	461	1.1	<b>0.8</b>	<b>510</b>	B				C	C			151316		
12.1	<b>115.56</b>	0.55	403	1.3	<b>0.7</b>	<b>510</b>	B				C	C			131316		
10.2	<b>137.20</b>	0.55	479	1.1	<b>0.6</b>	<b>530</b>	B				C	C			101318		
8.9	<b>157.74</b>	0.55	550	0.9	<b>0.5</b>	<b>510</b>	B				C	C			101316		
7.8	<b>179.06</b>	0.37	420	1.3	<b>0.5</b>	<b>530</b>	B				C	C			91318		
7.6	<b>184.15</b>	0.37	432	1.2	<b>0.4</b>	<b>500</b>	B				C	C			101314		
6.8	<b>205.87</b>	0.37	483	1.1	<b>0.4</b>	<b>510</b>	B				C	C			91316		
5.8	<b>240.34</b>	0.25	381	1.3	<b>0.3</b>	<b>500</b>	B				C	C			91314		
5.1	<b>271.85</b>	0.25	431	1.2	<b>0.3</b>	<b>510</b>	B				C	C			71316		
4.4	<b>317.36</b>	0.25	503	1.0	<b>0.2</b>	<b>500</b>	B				C	C			71314		

The dynamic efficiency is **0.93** for all ratios

**M** Motor Flanges Available  
Flange Motore Disponibili

**B** Supplied with Reduction Bushing  
Fornito con Bussola di Riduzione

**B** Available on Request without reduction bushing  
Disponibile a Richiesta senza Bussola di Riduzione

**C** Motor Flange Holes Position  
Posizione Fori Flangia Motore

**EN** Unit **F53A** is supplied with synthetic oil for lifetime lubrication, no maintenance is necessary. See table 1 for lubrication and recommended quantity. In table 2 please see possible radial loads and axial loads on the gearbox.  
For complete documentation please visit our web site.

**I** Il riduttore **F53A** viene fornito completo di olio sintetico per la lubrificazione permanente e non necessita di alcuna manutenzione. Vedi tab.1 per oli e quantità consigliati. In tab.2 sono presenti i carichi radiali e assiali applicabili al riduttore.  
Per la documentazione completa consulta il nostro sito.

**D** Das Getriebe **F53A** ist mit synthetischem Öl gefüllt und ist lebensdauergeschmiert. In Tabelle 1 ist die Schmiermenge und das empfohlene Schmiermittel angegeben. In Tabelle 2 sind die zulässigen Radial- und Axialbelastungen des Getriebes aufgeführt. Die komplette Dokumentation, Wartungs- und Inbetriebnahmeanleitungen finden Sie unter.

**E** El reductor tamaño **F53A** se suministra, lubricado de por vida con aceite sintético y no requieren mantenimiento alguna. Ver tabla 1, para cantidades y aceites recomendados. En la tabla 2, se encuentran las cargas radiales y axiales admitidas por el reductor. Para documentación completa, consultar nuestra Web.

Standard supplied	For these mounting position specify in the order or add oil Per queste posizioni specificare in fase d'ordine o aggiungere olio				
1.90 LT	1.30 LT	1.00 LT	1.35 LT	1.90 LT	1.35 LT
<b>AGIP</b> Teliun VSF 320	<b>BP</b> Energol SGXP220	<b>SHELL</b> Tivela Oil WB	<b>KLUBER</b> Syntheso D220 EP	<b>MOBIL</b> Glygoyle 30	

tab. 1

**Output shaft**  
Albero di uscita

$F_{eq} = FR \cdot \frac{69.1}{X+39.1}$

$n_2$	FA	FR	$n_2$	FA	FR	$n_2$	FA	FR
<b>200</b>	420	2100	<b>85</b>	568	2376	<b>15</b>	960	4800
<b>140</b>	466	2328	<b>70</b>	590	2952	-	-	-
<b>120</b>	554	2772	<b>40</b>	706	3528	-	-	-

**Input shaft**  
Albero in entrata

$n_1$	FA	FR
<b>1400</b>	300	1500
<b>900</b>	377	1884
<b>500</b>	493	2466

tab. 2

▪ **SELECT THIS TYPE AND THIS SPECIFIC SIZE ON THE WEB PAGES TO GET COMPLETE TECHNICAL DATA.**  
Selezionare tipo e gandezza specifica nel sito web per la documentazione completa.

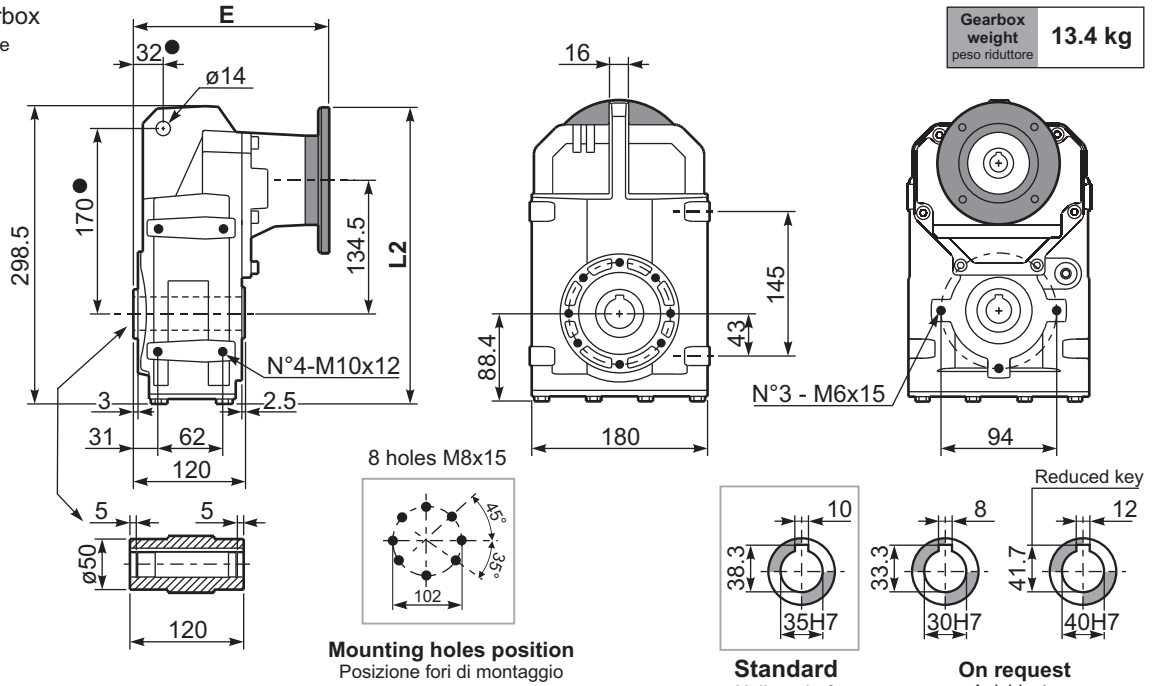
**PF53AC...**

Basic gearbox  
Riduttore base

Gearbox weight  
peso riduttore **13.4 kg**

**Motor Flange**

Motor Flange	E	L2
63 B5	211.5	293.5
71 B5	212.5	303.5
80/90 B5	211.5	323.5
71 B14	209.5	276
80 B14	210.5	283.5
90 B14	211.5	293.5
100/112B14	227.5	303.5

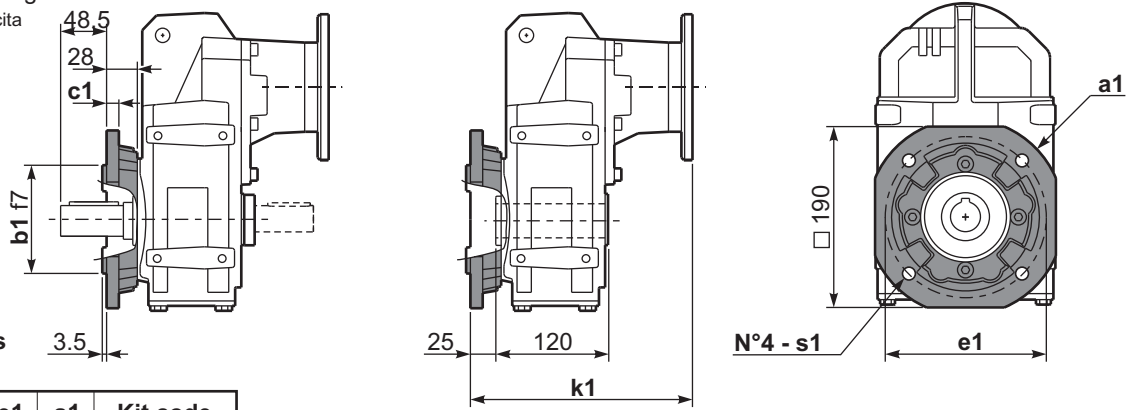


● Available torque arms, see our web site  
Bracci di reazione disponibili, consulta il nostro sito web

**PF53A...-F...**

Output flange  
Flangia uscita

Motor Flange	k1
63 B5	236.5
71 B5	237.5
80/90 B5	236.5
71 B14	234.5
80 B14	235.5
90 B14	236.5
100/112B14	252.5



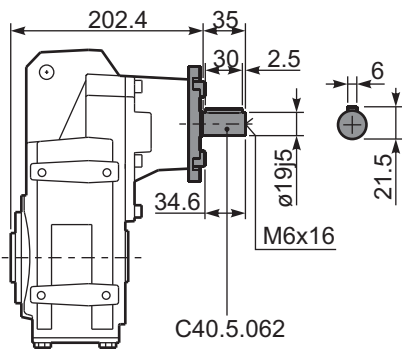
Available output flanges  
Flange di uscita

a1 ø	b1	c1	e1	s1	Kit code
200*	130	10	165	11	KF50.9.010
250	180	15	215	13.5	KF50.9.011

\* Standard output flange / Flangia uscita standard

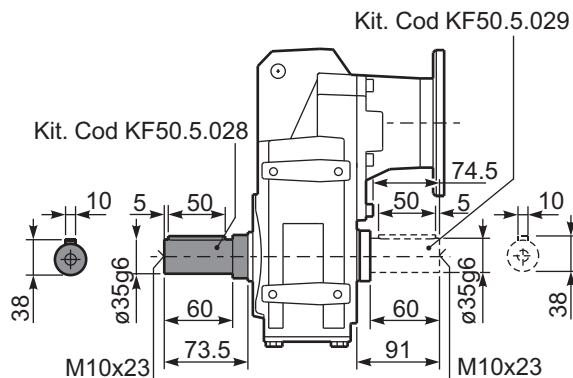
**RF53AC...**

Input Shaft  
Albero in entrata



**PF53A/A/B...**

Single and Double output shaft  
Albero uscita semplice e doppio



**PF53A/D/S...**

Shrink disk  
Calettatore

