

F42A Compact- Gear

350Nm

Rating - Alluminum SHAFT MOUNTED HELICAL



QUICK SELECTION / Selezione veloce

input speed (n_1) = 1400 min⁻¹

Output Speed n_2 [min ⁻¹]	Ratio i	Motor power P_{1M} [kW]	Output torque M_{2M} [Nm]	Service factor f.s.	Nominal power P_{1R} [kW]	Nominal torque M_{2R} [Nm]	Available B5 motor flanges				Available B14 motor flanges				Output Shaft	Ratios code	
							B	C	D	E	Q	R	T	U			
172	8.12	3.0	160	1.2	3.57	190	B				C	C			2818	standard $\varnothing 30$ On request $\varnothing 25$ $\varnothing 35$	-
139	10.06	3.0	198	1.0	3.04	200	B				C	C			2815		
82	17.02	2.2	245	1.0	2.24	250	B				C	C			1718		
77	18.19	2.2	262	1.0	2.18	260	B				C	C			1915		
66	21.08	1.5	207	1.5	2.29	316	B				C	C			1715		
57	24.75	1.5	243	1.2	1.83	297	B				C	C			1515		
47.4	29.54	1.5	290	1.1	1.60	310	B				C	C			1315		
43	32.55	1.1	234	1.0	1.14	244	B				C	C			1018		
34.7	40.32	1.1	290	1.0	1.14	300	B				C	C			1015		
33	42.48	0.75	209	1.0	0.72	200	B				C	C			918		
26.6	52.62	0.75	258	1.0	0.72	247	B				C	C			915		
20.1	69.49	0.37	168	1.1	0.42	190	B				C	C			715		

The dynamic efficiency is **0.96** for all ratios

Motor Flanges Available
Flange Motore Disponibili

B) Supplied with Reduction Bushing
Fornito con Bussola di Riduzione

B) Available on Request without reduction bushing
Disponibile a Richiesta senza Bussola di Riduzione

C) Motor Flange Holes Position
Posizione Fori Flangia Motore

EN Unit **F42A** is supplied with synthetic oil for lifetime lubrication, no maintenance is necessary. See table 1 for lubrication and recommended quantity. In table 2 please see possible radial loads and axial loads on the gearbox. For complete documentation please visit our web site.

I Il riduttore **F42A** viene fornito completo di olio sintetico per la lubrificazione permanente e non necessita di alcuna manutenzione. Vedi tab.1 per oli e quantità consigliati. In tab.2 sono presenti i carichi radiali e assiali applicabili al riduttore. Per la documentazione completa consulta il nostro sito.

D Das Getriebe **F42A** ist mit synthetischem Öl gefüllt und ist lebensdauergeschmiert. In Tabelle 1 ist die Schmiermenge und das empfohlene Schmiermittel angegeben. In Tabelle 2 sind die zulässigen Radial - und Axialbelastungen des Getriebes aufgeführt. Die komplette Dokumentation, Wartungs - und Inbetriebnahmeanleitungen finden Sie unter.

E El reductor tamaño **F42A** se suministra, lubricado de por vida con aceite sintético y no requieren mantenimiento alguna. Ver tabla 1, para cantidades y aceites recomendados. En la tabla 2, se encuentran las cargas radiales y axiales admitidas por el reductor. Para documentación completa, consultar nuestra Web.

Standard supplied	For these mounting position specify in the order or add oil Per queste posizioni specificare in fase d'ordine o aggiungere olio				
H1	H4	H3	H2	H5	H6
1.20 LT	0.80 LT	0.60 LT	0.80 LT	1.20 LT	0.85 LT
AGIP Telium VSF 320	BP Energol SGXP220	SHELL Tivela Oil WB	KLUBER Syntheso D220 EP	MOBIL Glygoyle 30	

tab. 1

RADIAL AND AXIAL LOADS								
Output shaft Albero di uscita			$F_{eq} = F_R \cdot \frac{68}{X+38}$					
n_2	FA	FR	n_2	FA	FR	n_2	FA	FR
200	384	1920	85	500	2498	15	672	3360
140	427	2136	70	523	2616	-	-	-
120	451	2256	40	641	3204	-	-	-
Input shaft Albero in entrata								
n_1	FA	FR						
1400	310	1548						
900	312	1560						
500	312	1560						

tab. 2

SELECT THIS TYPE AND THIS SPECIFIC SIZE ON THE WEB PAGES TO GET COMPLETE TECHNICAL DATA.
Selezionare tipo e gandezza specifica nel sito web per la documentazione completa.

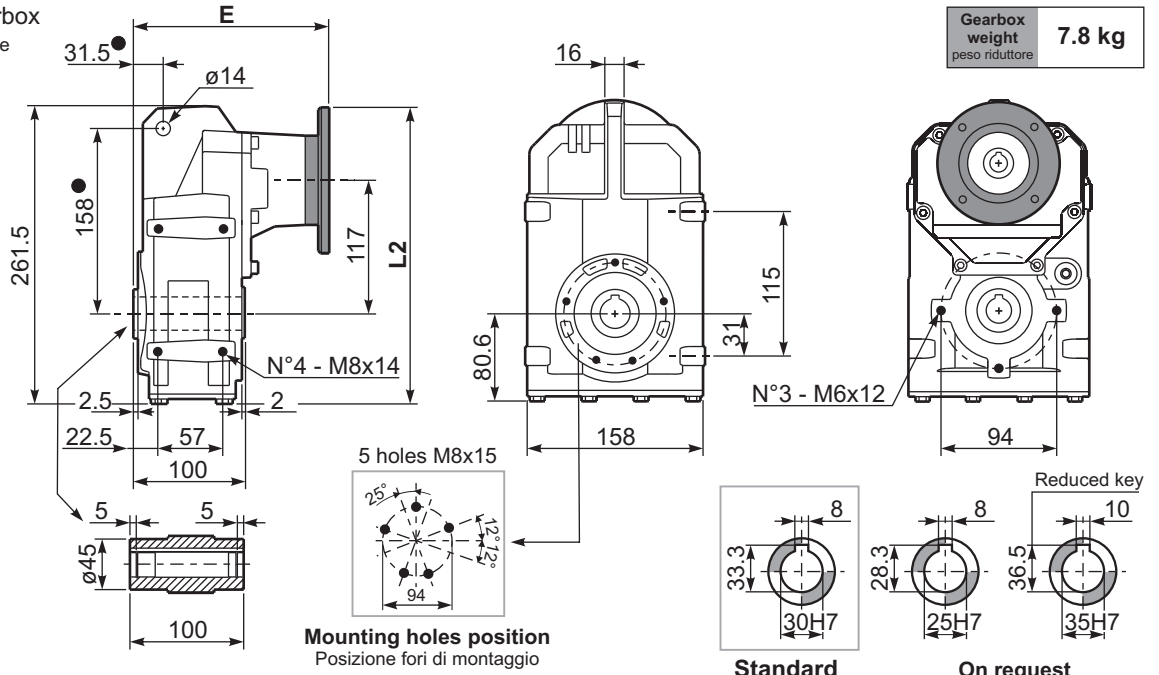
PF42AC...

Basic gearbox
Riduttore base

Gearbox weight
peso riduttore **7.8 kg**

Motor Flange

Motor Flange	E	L2
63 B5	170	267.5
71 B5	168	277.5
80/90 B5	170	297.5
71 B14	168	250
80 B14	169	257.5
90 B14	170	267.5
100/112B14	186	277.5

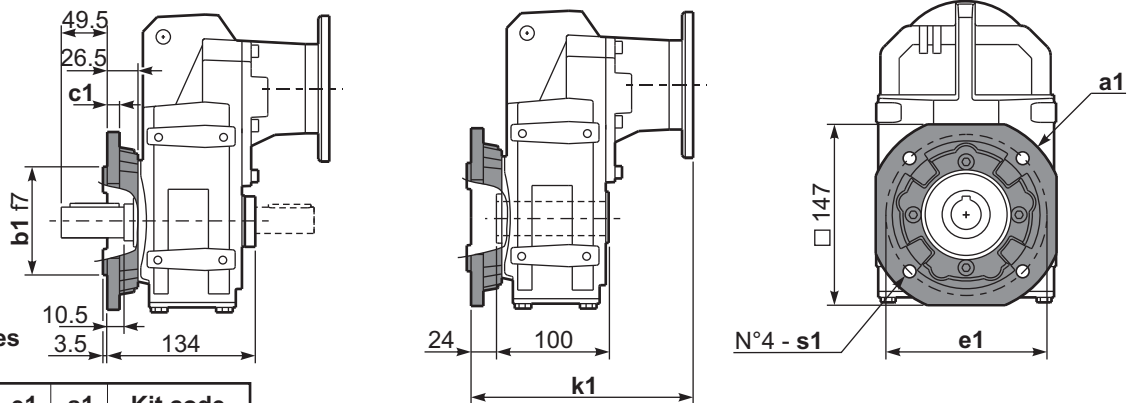


● Available torque arms, see our web site
Bracci di reazione disponibili, consulta il nostro sito web

PF42A...-F...

Output flange
Flangia uscita

Motor Flange	k1
63 B5	194
71 B5	192
80/90 B5	194
71 B14	194
80 B14	193
90 B14	194
100/112B14	210



Available output flanges

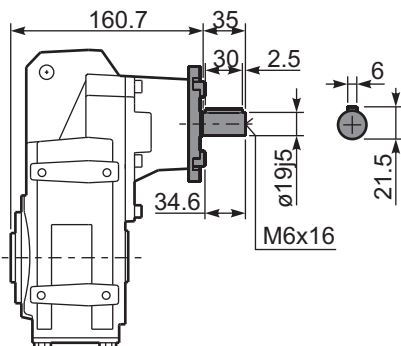
Flange di uscita

a1 ø	b1	c1	e1	s1	Kit code
160*	110	10	130	8.5	KF40.9.010
200	130	11	165	11	KF40.9.011

*Standard output flange / Flangia uscita standard

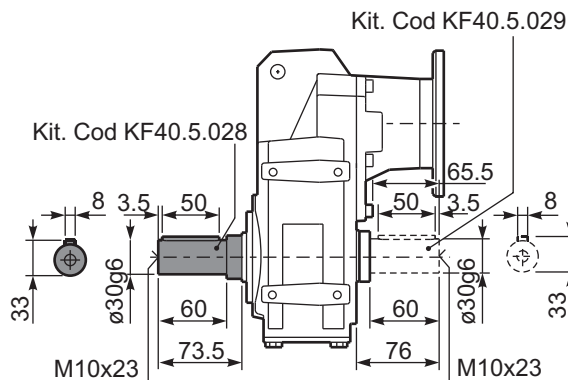
RF42AC...

Input Shaft
Albero in entrata



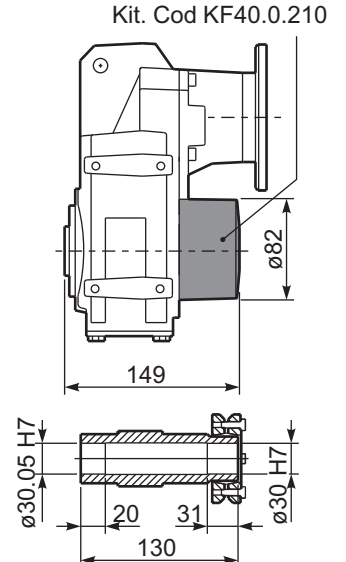
PF42A/B...

Single and Double output shaft
Albero uscita semplice e doppio



PF42AD/S...

Shrink disk
Calettatore



F43A Compact- Gear 350Nm

Rating - Alluminum SHAFT MOUNTED HELICAL



QUICK SELECTION / Selezione veloce

input speed (n_1) = 1400 min⁻¹

Output Speed n_2 [min ⁻¹]	Ratio i	Motor power P_{1M} [kW]	Output torque M_{2M} [Nm]	Service factor f.s.	Nominal power P_{1R} [kW]	Nominal torque M_{2R} [Nm]	Available B5 motor flanges				Available B14 motor flanges					Output Shaft	
							B	C	D	E	O	P	Q	R	T		
							63	71	80	90	56	63	71	80	90		
42.3	33.13	1.5	315	1.1	1.6	337	B						C	C		281715	standard ø30 On request ø25 ø35
37.4	37.47	1.1	261	1.0	1.1	250	B						C	C		281318	
28.9	48.37	0.75	230	1.2	0.9	272	B						C	C		191718	
23.4	59.92	0.75	285	1.2	0.9	337	B						C	C		191715	
21.3	65.81	0.75	313	0.9	0.7	272	B						C	C		151718	
20.2	69.45	0.75	330	1.0	0.8	337	B						C	C		171715	
17.2	81.52	0.55	284	1.2	0.7	337	B						C	C		151715	
14.4	97.30	0.55	339	1.0	0.5	337	B						C	C		131715	
13.1	107.22	0.37	252	1.1	0.4	272						C	C		101718		
12.3	114.21	0.37	268	1.2	0.4	310						C	C		151315		
10.3	136.33	0.37	320	1.0	0.4	310						C	C		131315		
7.5	186.09	0.25	295	1.1	0.3	310						C	C		101315		
6.1	228.89	0.25	363	0.9	0.23	337						C	C		71715		
5.8	242.87	0.18	277	1.1	0.20	310						C	C		91315		
4.4	320.70	0.18	366	0.8	0.15	310						C	C		71315		

The dynamic efficiency is **0.93** for all ratios

Motor Flanges Available
Flange Motore Disponibili

B) Supplied with Reduction Bushing
Fornito con Bussola di Riduzione

B) Available on Request without reduction bushing
Disponibile a Richiesta senza Bussola di Riduzione

C) Motor Flange Holes Position
Posizione Fori Flangia Motore

EN Unit **F43A** is supplied with synthetic oil for lifetime lubrication, no maintenance is necessary. See table 1 for lubrication and recommended quantity. In table 2 please see possible radial loads and axial loads on the gearbox. For complete documentation please visit our web site.

I Il riduttore **F43A** viene fornito completo di olio sintetico per la lubrificazione permanente e non necessita di alcuna manutenzione. Vedi tab.1 per oli e quantità consigliati. In tab.2 sono presenti i carichi radiali e assiali applicabili al riduttore. Per la documentazione completa consulta il nostro sito.

D Das Getriebe **F43A** ist mit synthetischem Öl gefüllt und ist lebensdauergeschmiert. In Tabelle 1 ist die Schmiermenge und das empfohlene Schmiermittel angegeben. In Tabelle 2 sind die zulässigen Radial- und Axialbelastungen des Getriebes aufgeführt. Die komplette Dokumentation, Wartungs- und Inbetriebnahmeanleitungen finden Sie unter.

E El reductor tamaño **F43A** se suministra, lubricado de por vida con aceite sintético y no requieren mantenimiento alguna. Ver tabla 1, para cantidades y aceites recomendados. En la tabla 2, se encuentran las cargas radiales y axiales admitidas por el reductor. Para documentación completa, consultar nuestra Web.

Standard supplied	For these mounting position specify in the order or add oil Per queste posizioni specificare in fase d'ordine o aggiungere olio				
H1	H4	H3	H2	H5	H6
1.25 LT	0.85 LT	0.65 LT	0.85 LT	1.25 LT	0.90 LT
AGIP Telium VSF 320	BP Energol SGXP220	SHELL Tivela Oil WB	KLUBER Syntheso D220 EP	MOBIL Glygoyle 30	

tab. 1

RADIAL AND AXIAL LOADS								
Output shaft Albero di uscita			$F_{eq} = FR \cdot \frac{68}{X+38}$					
n_2	FA	FR	n_2	FA	FR	n_2	FA	FR
200	384	1920	85	500	2498	15	672	3360
140	427	2136	70	523	2616	-	-	-
120	451	2256	40	641	3204	-	-	-
Input shaft Albero in entrata								
n_1	FA	FR						
1400	310	1548						
900	312	1560						
500	312	1560						

tab. 2

SELECT THIS TYPE AND THIS SPECIFIC SIZE ON THE WEB PAGES TO GET COMPLETE TECHNICAL DATA.
Selezionare tipo e gandezza specifica nel sito web per la documentazione completa.

PF43AC...

Basic gearbox
Riduttore base

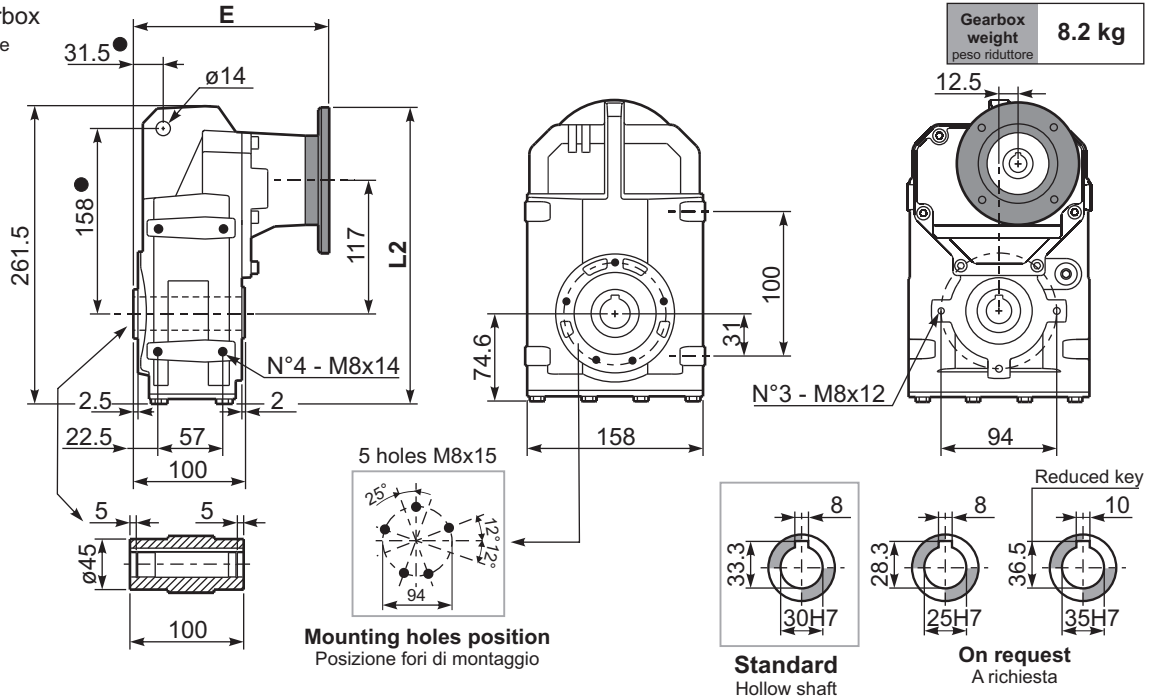
Gearbox weight
peso riduttore **8.2 kg**

Ratio 33.13+97.30 IEC80

Motor Flange	E	L2
63B5	191	267.5
71B5	189	277.5
80-90B5	191	297.5
71B14	189	250
80B14	190	257.5
90B14	191	267.5

Ratio 107.22+320.70 IEC71

Motor Flange	E	L2
63 B5	172	267.5
71 B5	170	264
56B14	175.5	236.5
63B14	174.5	242.5
71B14	171.5	250



● Available torque arms, see our web site
Bracci di reazione disponibili, consulta il nostro sito web

PF43A...-F...

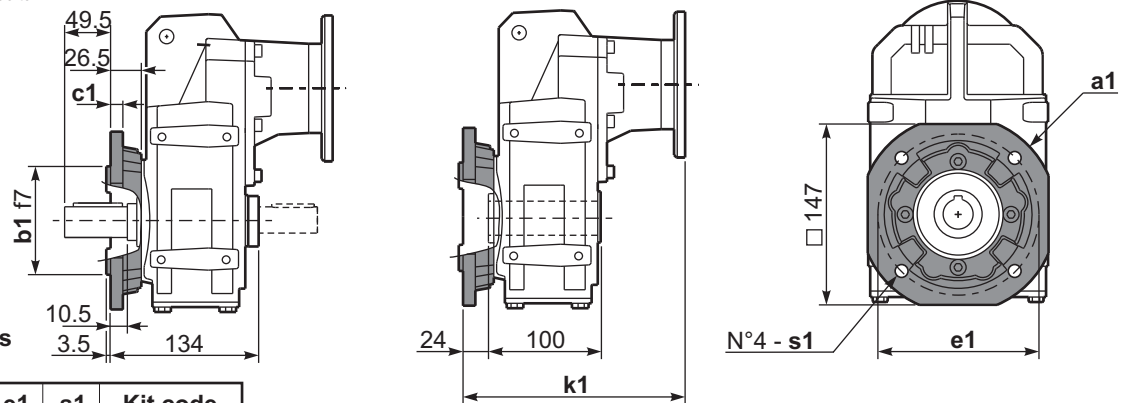
Output flange
Flangia uscita

Motor Flange	k1 IEC71	k1 IEC80
63 B5	196	215
71 B5	194	213
80/90 B5	-	215
56B14	199.5	-
63B14	198.5	-
71B14	195.5	213
80B14	-	214
90B14	-	215

Available output flanges
Flange di uscita

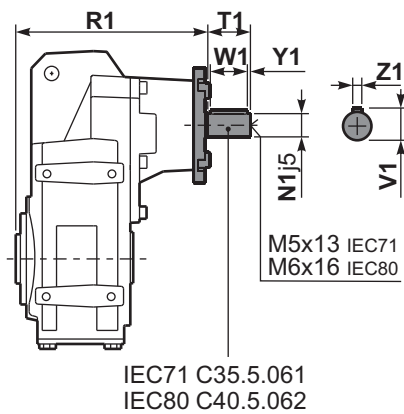
a1 ø	b1	c1	e1	s1	Kit code
160*	110	10	130	8.5	KF40.9.010
200	130	11	165	11	KF40.9.011

* Standard Output flange / Flangia uscita standard



RF43AC...

Input Shaft
Albero in entrata

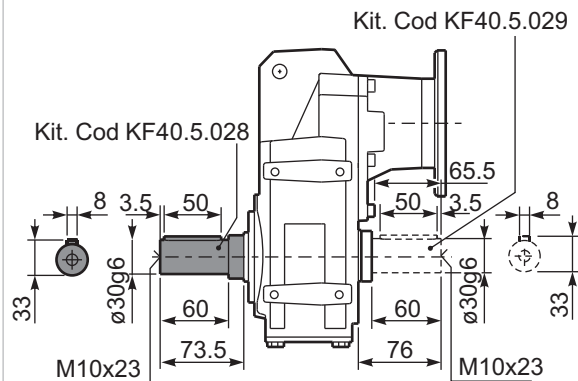


IEC71 C35.5.061
IEC80 C40.5.062

Input shaft	N1 j5	R1	T1	V1	Z1	W1	Y1
IEC71	ø14	165.4	25	16	5	20	2.4
IEC80	ø19	181.9	35	21.5	6	30	2.5

PF43A/A/B...

Single and Double output shaft
Albero uscita semplice e doppio



PF43A/D/S...

Shrink disk
Calettatore

