

**QUICK SELECTION / Selezione veloce** The dynamic efficiency is **0.94** for all ratios **input speed (n<sub>1</sub>) = 1400 min<sup>-1</sup>**

Output Speed n <sub>2</sub> [min <sup>-1</sup> ]	Ratio i	Motor power P <sub>1M</sub> [kW]	Output torque M <sub>2M</sub> [Nm]	Service factor f.s.	Nominal power P <sub>1R</sub> [kW]	Nominal torque M <sub>2R</sub> [Nm]	Available B5 motor flanges				Available B14 motor flanges			Output Shaft 	Ratios code 	
							B	C	D	E	Q	R	T			
							63	71	80	90	71	80	90			
24.7	<b>56.76</b>	1.1	398	1.0	<b>1.1</b>	<b>410</b>	B				C	C		191311	standard ø35  ø40 On request	-
21.3	<b>65.79</b>	0.75	316	1.3	<b>0.97</b>	<b>410</b>	B				C	C		171311		
18.1	<b>77.23</b>	0.75	371	1.1	<b>0.83</b>	<b>410</b>	B				C	C		151311		
16.0	<b>87.23</b>	0.75	420	1.0	<b>0.73</b>	<b>410</b>	B				C	C		19138		
15.2	<b>92.18</b>	0.75	443	0.9	<b>0.69</b>	<b>410</b>	B				C	C		131311		
13.9	<b>100.47</b>	0.55	357	1.2	<b>0.64</b>	<b>410</b>	B				C	C		19811		
12.0	<b>116.45</b>	0.55	413	1.0	<b>0.55</b>	<b>410</b>	B				C	C		17811		
11.1	<b>125.82</b>	0.55	447	0.9	<b>0.51</b>	<b>410</b>	B				C	C		101311		
9.9	<b>141.66</b>	0.37	336	1.2	<b>0.45</b>	<b>410</b>	B				C	C		13138		
8.6	<b>163.16</b>	0.37	387	1.1	<b>0.39</b>	<b>410</b>	B				C	C		13811		
7.8	<b>178.96</b>	0.37	425	1.0	<b>0.36</b>	<b>410</b>	B				C	C		1788		
7.2	<b>193.36</b>	0.37	459	0.9	<b>0.33</b>	<b>410</b>	B				C	C		10138		
6.5	<b>216.84</b>	0.25	347	1.2	<b>0.29</b>	<b>410</b>	B				C	C		71311		
5.5	<b>252.36</b>	0.25	404	1.0	<b>0.25</b>	<b>410</b>	B				C	C		9138		
4.8	<b>290.67</b>	0.25	465	0.9	<b>0.22</b>	<b>410</b>	B				C	C		9811		
4.2	<b>333.23</b>	0.18	408	1.0	<b>0.19</b>	<b>410</b>	B				C	C		7138		
3.6	<b>383.82</b>	0.18	470	0.9	<b>0.17</b>	<b>410</b>	B				C	C		7811		
3.1	<b>446.70</b>	0.12	353	1.2	<b>0.14</b>	<b>410</b>	B				C	C		988		
2.4	<b>589.85</b>	0.09	372	1.1	<b>0.11</b>	<b>410</b>	B				C	C		788		

Motor Flanges Available  
Flange Motore Disponibili

B) Supplied with Reduction Bushing  
Fornito con Bussola di Riduzione

B) Available on Request without reduction bushing  
Disponibile a Richiesta senza Bussola di Riduzione

C) Motor Flange Holes Position  
Posizione Fori Flangia Motore

**EN** Unit **X63A** is supplied with synthetic oil for lifetime lubrication, no maintenance is necessary. See table 1 for lubrication and recommended quantity. In table 2 please see possible radial loads and axial loads on the gearbox. For complete documentation please visit our web site.

**I** Il riduttore **X63A** viene fornito completo di olio sintetico per la lubrificazione permanente e non necessita di alcuna manutenzione. Vedi tab.1 per oli e quantità consigliati. In tab.2 sono presenti i carichi radiali e assiali applicabili al riduttore. Per la documentazione completa consulta il nostro sito.

**D** Das Getriebe **X63A** ist mit synthetischem Öl gefüllt und ist lebensdauergeschmiert. In Tabelle 1 ist die Schmiermenge und das empfohlene Schmiermittel angegeben. In Tabelle 2 sind die zulässigen Radial - und Axialbelastungen des Getriebes aufgeführt. Die komplette Dokumentation, Wartungs - und Inbetriebnahmeanleitungen finden Sie unter.

**E** El reductor tamaño **X63A** se suministra, lubricado de por vida con aceite sintético y no requieren mantenimiento alguna. Ver tabla 1, para cantidades y aceites recomendados. En la tabla 2, se encuentran las cargas radiales y axiales admitidas por el reductor. Para documentación completa, consultar nuestra Web.

Standard supplied	For these mounting position specify in the order or add oil Per queste posizioni specificare in fase d'ordine o aggiungere olio						
1.80 LT	1.80 LT	1.05 LT	1.70 LT	2.60 LT	1.65 LT	1.30 LT	
AGIP Telium VSF 320	BP Energol SGXP220	SHELL Tivela Oil WB	KLUBER Syntheso D220 EP	MOBIL Glygoyle 30			

Oil plugs on request / Tappi olio a richiesta. **tab. 1**

### RADIAL AND AXIAL LOADS

**Output shaft**  
Albero di uscita

$F_{eq} = F_R \cdot \frac{69}{X+39}$

n <sub>2</sub> [min <sup>-1</sup> ]	FA	FR	n <sub>2</sub> [min <sup>-1</sup> ]	FA	FR	n <sub>2</sub> [min <sup>-1</sup> ]	FA	FR
250	600	3000	75	890	4450	15	1660	8300
150	700	3500	50	1140	5700			
100	780	3900	25	1330	6650			

**F<sub>R</sub>** On request taper roller bearings to increase radial loads.  
A richiesta cuscinetti a rulli conici per aumentare i carichi radiali.

**Input shaft**  
albero in entrata

n <sub>1</sub> [min <sup>-1</sup> ]	FA [N]	FR [N]
1400	400	2000
900	440	2200
600	440	2200

\*Strong axial loads in the DX direction are not allowed.  
Non sono consentiti forti carichi assiali con direzione DX

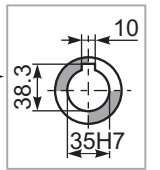
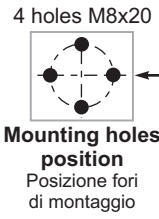
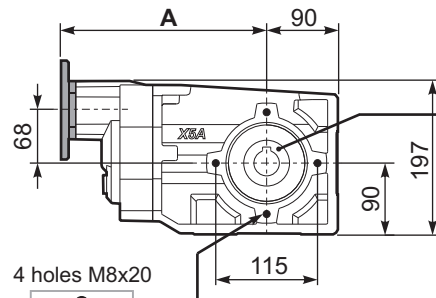
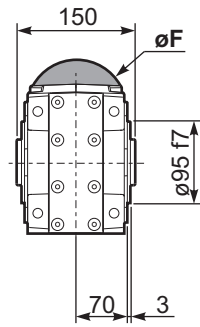
**tab. 2**

**SELECT THIS TYPE AND THIS SPECIFIC SIZE ON THE WEB PAGES TO GET COMPLETE TECHNICAL DATA.**  
Selezionare tipo e gandezza specifica nel sito web per la documentazione completa.

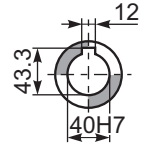
PX63A-C... Basic Gearbox  
Riduttore base

Gearbox weight  
peso riduttore **15.98 kg**

M. flanges	Kit code	øF	A
63B5	K063.4.041	140	265
71B5	K063.4.042	160	263
80/90B5	K063.4.043	200	265
71B14	K063.4.047	105	263
80B14	K063.4.046	120	264
90B14	K063.4.041	140	265

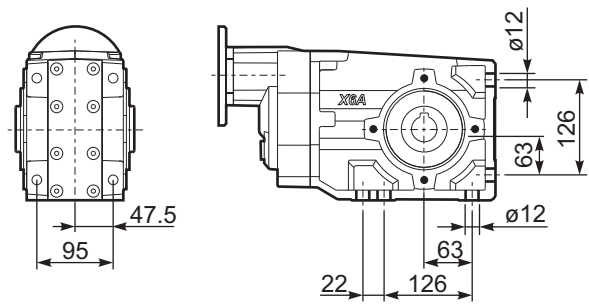


**Standard**  
Hollow shaft

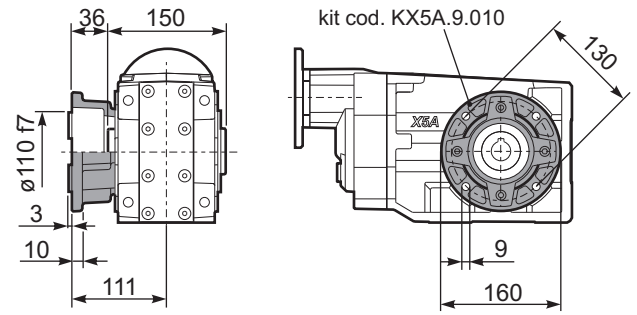


**On request**  
A richiesta

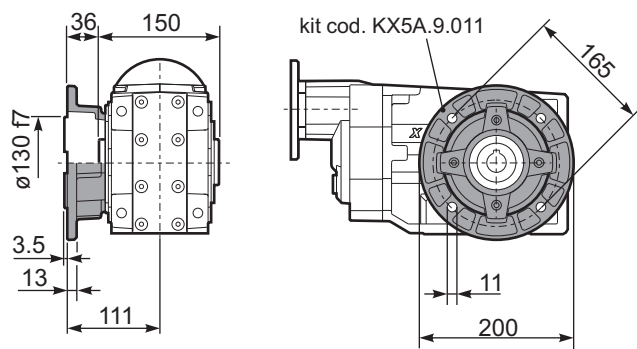
PX63A-N... Feet  
Piedini



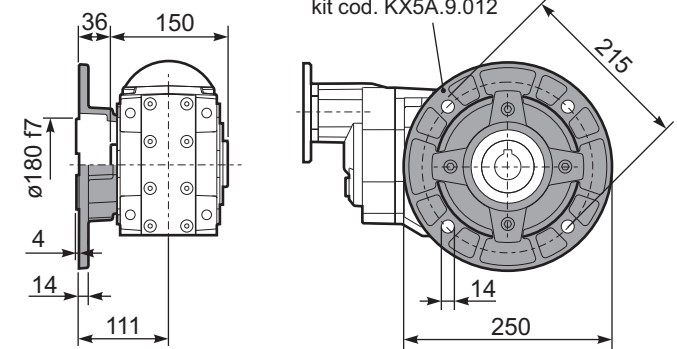
PX63A-F2... Output flange  
Flangia uscita



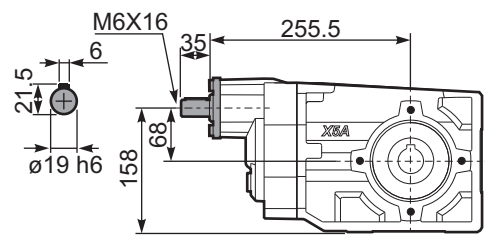
PX63A-F3... Output flange  
Flangia uscita



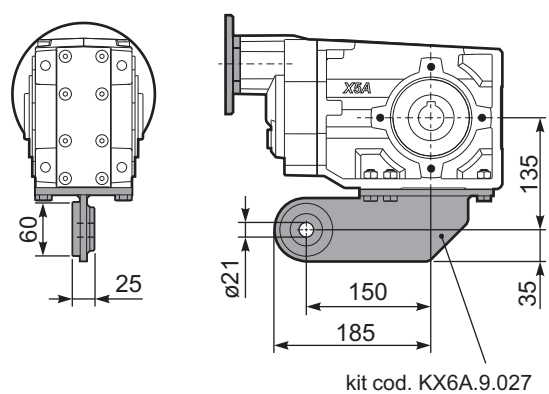
PX63A-F4... Output flange  
Flangia uscita



RX63A... Input shaft  
Albero in entrata



PX63A-BR... Reaction Arm  
Braccio di reazione



PX63A..A... Single output shaft  
Albero semplice in uscita

