

QUICK SELECTION / Selezione veloce The dynamic efficiency is **0.94** for all ratios **input speed (n₁) = 1400 min⁻¹**

| Output Speed n ₂ [min ⁻¹] | Ratio i | Motor power P _{1M} [kW] | Output torque M _{2M} [Nm] | Service factor f.s. | Nominal power P _{1R} [kW] | Nominal torque M _{2R} [Nm] | Available B5 motor flanges | | Available B14 motor flanges | | | Output Shaft | Ratios code |
|--|---------------|--|--|------------------------|--|---|----------------------------|----|-----------------------------|----|----|------------------|-----------------|
| | | | | | | | B | C | O | P | Q | | |
| | | | | | | | 63 | 71 | 56 | 63 | 71 | | |
| 38.7 | 36.17 | 0.37 | 86 | 1.2 | 0.43 | 100 | | | C | C | | 17179 | standard ø20 |
| 31.7 | 44.21 | 0.37 | 105 | 1.0 | 0.35 | 100 | | | C | C | | 19139 | |
| 27.6 | 50.68 | 0.25 | 81 | 1.2 | 0.31 | 100 | | | C | C | | 17139 | |
| 25.3 | 55.36 | 0.25 | 89 | 1.1 | 0.28 | 100 | | | C | C | | 17177 | |
| 23.2 | 60.31 | 0.25 | 97 | 1.0 | 0.26 | 100 | | | C | C | | 15139 | |
| 21.3 | 65.88 | 0.25 | 105 | 0.9 | 0.24 | 100 | | | C | C | | 15177 | |
| 19.4 | 72.25 | 0.18 | 88 | 1.1 | 0.22 | 100 | | | C | C | | 10179 | |
| 17.6 | 79.64 | 0.18 | 97 | 1.0 | 0.20 | 100 | | | C | C | | 13177 | |
| 15.2 | 92.31 | 0.18 | 113 | 0.9 | 0.17 | 100 | | | C | C | | 15137 | |
| 14.6 | 95.65 | 0.18 | 117 | 0.9 | 0.16 | 100 | | | C | C | | 9179 | |
| 13.8 | 101.23 | 0.12 | 80 | 1.2 | 0.15 | 100 | | | C | C | | 10139 | |
| 11.0 | 127.37 | 0.12 | 101 | 1.0 | 0.12 | 100 | | | C | C | | 7179 | |
| 9.3 | 151.16 | 0.09 | 95 | 1.0 | 0.10 | 100 | | | C | C | | 6179 | |
| 7.8 | 178.46 | 0.09 | 113 | 0.9 | 0.09 | 100 | | | C | C | | 7139 | |
| 6.6 | 211.79 | 0.06 | 88 | 1.1 | 0.07 | 100 | | | C | C | | 6139 | |
| 6.1 | 231.37 | 0.06 | 96 | 1.0 | 0.07 | 100 | | | C | C | | 6177 | |
| 5.1 | 273.16 | 0.06 | 113 | 0.9 | 0.06 | 100 | | | C | C | | 7137 | |
| 4.3 | 324.18 | 0.06 | 134 | 0.7 | 0.05 | 100 | | | C | C | | 6137 | |

Motor Flanges Available Flange Motore Disponibili
B) Supplied with Reduction Bushing Fornito con Bussola di Riduzione
B) Available on Request without reduction bushing Disponibile a Richiesta senza Bussola di Riduzione
C) Motor Flange Holes Position Posizione Fori Flangia Motore

EN Unit **X33S** is supplied with synthetic oil for lifetime lubrication, no maintenance is necessary. See table 1 for lubrication and recommended quantity. In table 2 please see possible radial loads and axial loads on the gearbox. For complete documentation please visit our web site.

I Il riduttore **X33S** viene fornito completo di olio sintetico per la lubrificazione permanente e non necessita di alcuna manutenzione. Vedi tab.1 per oli e quantità consigliati. In tab.2 sono presenti i carichi radiali e assiali applicabili al riduttore. Per la documentazione completa consulta il nostro sito.

D Das Getriebe **X33S** ist mit synthetischem Öl gefüllt und ist lebensdauergeschmiert. In Tabelle 1 ist die Schmiermenge und das empfohlene Schmiermittel angegeben. In Tabelle 2 sind die zulässigen Radial - und Axialbelastungen des Getriebes aufgeführt. Die komplette Dokumentation, Wartungs - und Inbetriebnahmeanleitungen finden Sie unter.

E El reductor tamaño **X33S** se suministra, lubricado de por vida con aceite sintético y no requieren mantenimiento alguna. Ver tabla 1, para cantidades y aceites recomendados. En la tabla 2, se encuentran las cargas radiales y axiales admitidas por el reductor. Para documentación completa, consultar nuestra Web.

| Standard supplied | For these mounting position specify in the order or add oil Per queste posizioni specificare in fase d'ordine o aggiungere olio | | | | | |
|-------------------|--|---------------|------------------|-------------|---------|---------|
| | | | | | | |
| B3 | B6 | B7 | B8 | V5 | V6 | V8 |
| 0.70 LT | 0.65 LT | 0.40 LT | 0.65 LT | 0.95 LT | 0.65 LT | 0.45 LT |
| AGIP | BP | SHELL | KLUBER | MOBIL | | |
| Telium VSF 320 | Energol SGXP220 | Tivela Oil WB | Syntheso D220 EP | Glygoyle 30 | | |

Oil plugs on request / Tappi olio a richiesta. **tab. 1**

RADIAL AND AXIAL LOADS

Output shaft
Albero di uscita

$F_{eq} = F_R \cdot \frac{47.5}{X+28.5}$

| n ₂ [min ⁻¹] | FA | FR | n ₂ [min ⁻¹] | FA | FR | n ₂ [min ⁻¹] | FA | FR |
|-------------------------------------|-----|------|-------------------------------------|-----|------|-------------------------------------|-----|------|
| 250 | 400 | 2000 | 75 | 560 | 2800 | 15 | 560 | 2800 |
| 150 | 450 | 2250 | 50 | 560 | 2800 | | | |
| 100 | 500 | 2500 | 25 | 560 | 2800 | | | |

FR On request taper roller bearings to increase radial loads.
A richiesta cuscinetti a rulli conici per aumentare i carichi radiali.

Input shaft
albero in entrata

| n ₁ [min ⁻¹] | FA | FR |
|-------------------------------------|-----|-----|
| 1400 | 140 | 700 |
| 900 | 160 | 800 |
| 600 | 190 | 950 |

*Strong axial loads in the DX direction are not allowed.
Non sono consentiti forti carichi assiali con direzione DX

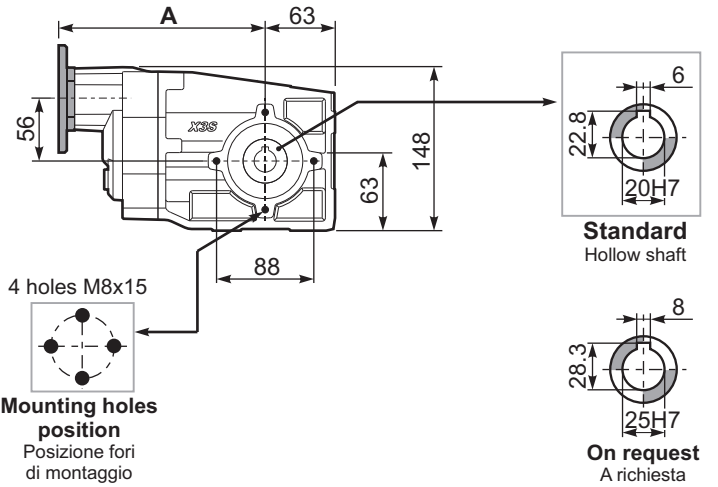
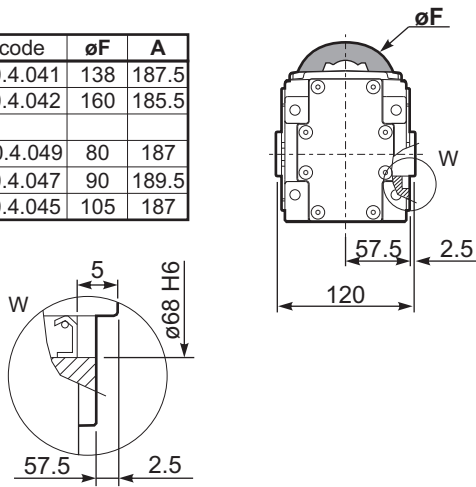
tab. 2

SELECT THIS TYPE AND THIS SPECIFIC SIZE ON THE WEB PAGES TO GET COMPLETE TECHNICAL DATA.
Selezionare tipo e gandezza specifica nel sito web per la documentazione completa.

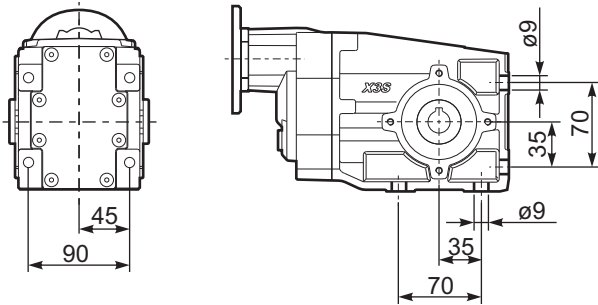
PX33S-C... Basic Gearbox
Riduttore base

Gearbox weight
peso riduttore **6.55 kg**

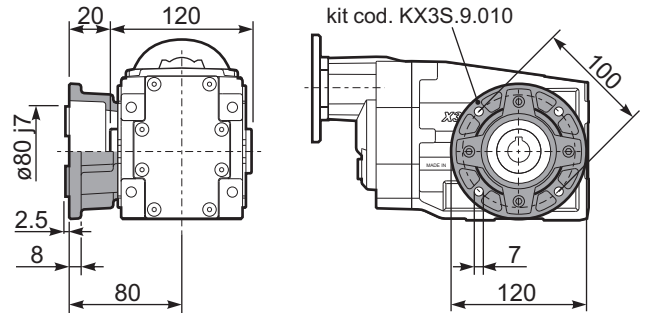
| M. flanges | Kit code | øF | A |
|--------------|------------|-----|-------|
| 63B5 | K050.4.041 | 138 | 187.5 |
| 71B5 | K050.4.042 | 160 | 185.5 |
| 56B14 | KC40.4.049 | 80 | 187 |
| 63B14 | K050.4.047 | 90 | 189.5 |
| 71B14 | K050.4.045 | 105 | 187 |



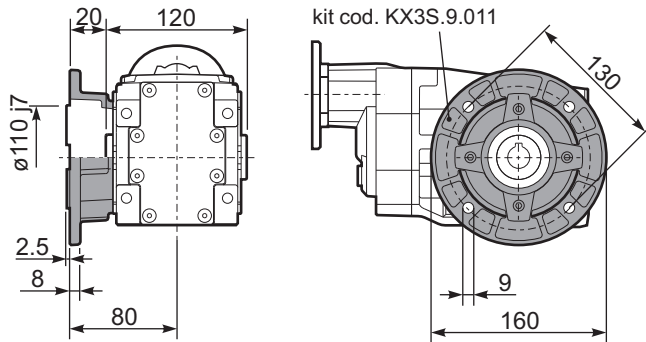
PX33S-N.. Feet
Piedi



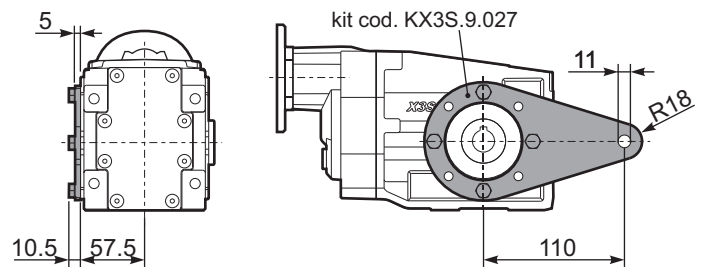
PX33S-F1.. Output flange
Flangia uscita



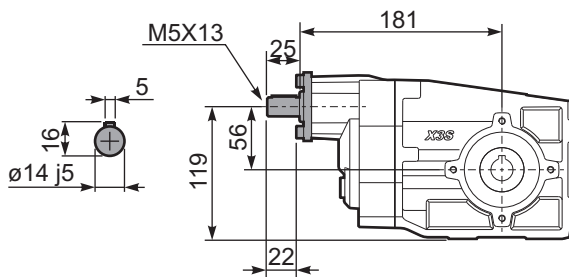
PX33S-F2.. Output flange
Flangia uscita



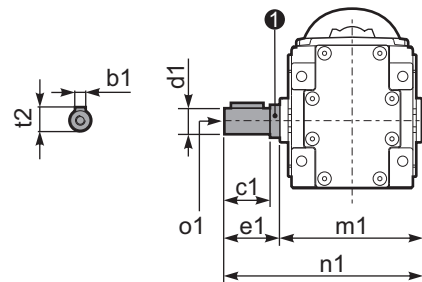
PX33S-BR.. Reaction Arm
Braccio di reazione



RX33S... Input shaft
Albero in entrata



PX33S..A.. Single output shaft
Albero semplice in uscita



| d1 | b1 | c1 | e1 | m1 | n1 | t2 | o1 | ① kit code |
|------------------------------|----|------|------|-------|-----|------|-------|------------|
| ø20 ^{-0.005/-0.020} | 6 | 37.5 | 40 | 120 | 140 | 22.5 | M8x20 | KX2S.5.028 |
| ø25 ^{-0.005/-0.020} | 8 | 60 | 63.2 | 126.8 | 190 | 28 | M8x20 | K063.5.028 |