



QUICK SELECTION / Selezione veloce							input speed (n <sub>1</sub> ) = 1400 min <sup>-1</sup>							
Output Speed n <sub>2</sub> [min <sup>-1</sup> ]	Ratio i	Motor power P <sub>1M</sub> [kW]	Output torque M <sub>2M</sub> [Nm]	Service factor f.s.	Nominal power P <sub>1R</sub> [kW]	Nominal torque M <sub>2R</sub> [Nm]	Available B5 motor flanges		Available B14 motor flanges			Output Shaft	Ratios code	
							B	C	O	P	Q			
36.5	<b>38.40</b>	0.37	90	1.9	<b>0.72</b>	<b>175</b>			C	C		171713	standard ø25	-
32.0	<b>43.69</b>	0.37	103	1.5	<b>0.54</b>	<b>149</b>			C	C		191712		
27.6	<b>50.64</b>	0.37	119	1.3	<b>0.50</b>	<b>160</b>			C	C		171712		
26.2	<b>53.36</b>	0.37	125	1.1	<b>0.41</b>	<b>138</b>			C	C		191710		
22.9	<b>61.22</b>	0.37	144	1.1	<b>0.41</b>	<b>160</b>			C	C		191312		
22.6	<b>61.90</b>	0.37	146	0.9	<b>0.35</b>	<b>138</b>			C	C		171710		
19.7	<b>70.95</b>	0.37	167	1.0	<b>0.36</b>	<b>160</b>			C	C		131712		
19.1	<b>73.43</b>	0.37	172	1.0	<b>0.38</b>	<b>175</b>			C	C		101713		
18.8	<b>74.77</b>	0.25	118	1.2	<b>0.29</b>	<b>138</b>			C	C		191310		
16.1	<b>86.66</b>	0.25	138	1.0	<b>0.25</b>	<b>138</b>			C	C		131710		
14.5	<b>96.85</b>	0.25	154	1.0	<b>0.26</b>	<b>160</b>			C	C		101712		
13.6	<b>102.89</b>	0.25	163	1.1	<b>0.28</b>	<b>180</b>			C	C		101313		
11.1	<b>126.40</b>	0.25	200	0.8	<b>0.20</b>	<b>160</b>			C	C		91712		
10.3	<b>135.69</b>	0.25	215	0.7	<b>0.19</b>	<b>160</b>			C	C		101312		
8.5	<b>165.70</b>	0.12	126	1.1	<b>0.13</b>	<b>138</b>			C	C		101310		
7.9	<b>177.09</b>	0.12	135	1.2	<b>0.14</b>	<b>160</b>			C	C		91312		
6.5	<b>216.30</b>	0.12	164	0.8	<b>0.10</b>	<b>138</b>			C	C		91310		

The dynamic efficiency is **0.93** for all ratios

  Motor Flanges Available Flange Motore Disponibili    
 B) Supplied with Reduction Bushing Fornito con Bussola di Riduzione    
 B) Available on Request without reduction bushing Disponibile a Richiesta senza Bussola di Riduzione    
 C) Motor Flange Holes Position Posizione Fori Flangia Motore

**EN** Unit **403A** is supplied with synthetic oil for lifetime lubrication, no maintenance is necessary. See table 1 for lubrication and recommended quantity. In table 2 please see possible radial loads and axial loads on the gearbox. For complete documentation please visit our web site.

**I** Il riduttore **403A** viene fornito completo di olio sintetico per la lubrificazione permanente e non necessita di alcuna manutenzione. Vedi tab.1 per oli e quantità consigliati. In tab.2 sono presenti i carichi radiali e assiali applicabili al riduttore. Per la documentazione completa consulta il nostro sito.

**D** Das Getriebe **403A** ist mit synthetischem Öl gefüllt und ist lebensdauergeschmiert. In Tabelle 1 ist die Schmiermenge und das empfohlene Schmiermittel angegeben. In Tabelle 2 sind die zulässigen Radial- und Axialbelastungen des Getriebes aufgeführt. Die komplette Dokumentation, Wartungs- und Inbetriebnahmeanleitungen finden Sie unter.

**E** El reductor tamaño **403A** se suministra, lubricado de por vida con aceite sintético y no requieren mantenimiento alguna. Ver tabla 1, para cantidades y aceites recomendados. En la tabla 2, se encuentran las cargas radiales y axiales admitidas por el reductor. Para documentación completa, consultar nuestra Web.

Standard supplied	For these mounting position specify in the order or add oil Per queste posizioni specificare in fase d'ordine o aggiungere olio					
0.30 LT	0.35 LT	0.45 LT	0.45 LT	0.45 LT	0.55 LT	0.45 LT
AGIP Telium VSF 320	BP Energol SGXP220	SHELL Tivela Oil WB	KLUBER Syntheso D220 EP	MOBIL Glygoyle 30		

tab. 1

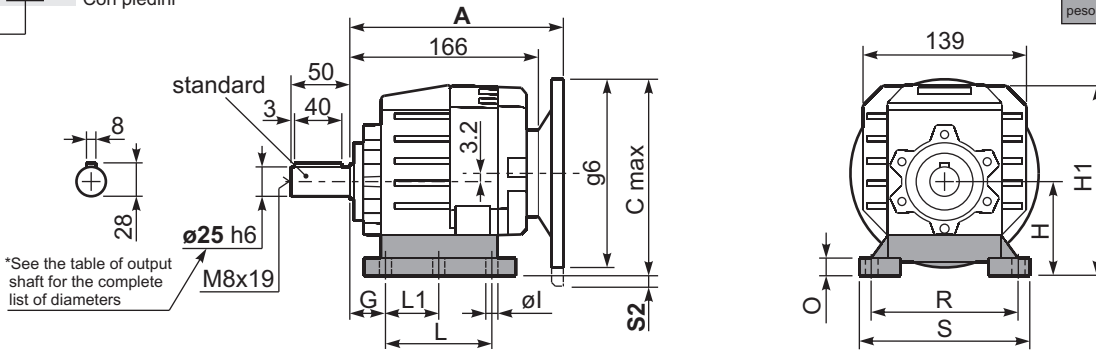
RADIAL AND AXIAL LOADS								
<b>Output shaft</b> Albero di uscita			$F_{eq} = FR \cdot \frac{46}{X+21}$					
n <sub>2</sub>	FA	FR	n <sub>2</sub>	FA	FR	n <sub>2</sub>	FA	FR
300	310	1550	140	406	2030	70	540	2700
250	330	1650	120	448	2240	40	600	3000
200	360	1800	85	480	2400	15	600	3000
<b>Input shaft</b> Albero in entrata								
n <sub>1</sub>	FA	FR						
1400	140	700						
900	160	800						
500	190	950						

tab. 2

▪ **SELECT THIS TYPE AND THIS SPECIFIC SIZE ON THE WEB PAGES TO GET COMPLETE TECHNICAL DATA.**  
Selezionare tipo e gandezza specifica nel sito web per la documentazione completa.

P403A **B1** ... With feet  
Con piedini

Gearbox weight **6.1 kg**  
peso riduttore With flange  
With feet **6.3 Kg**



**Feet / piedini**

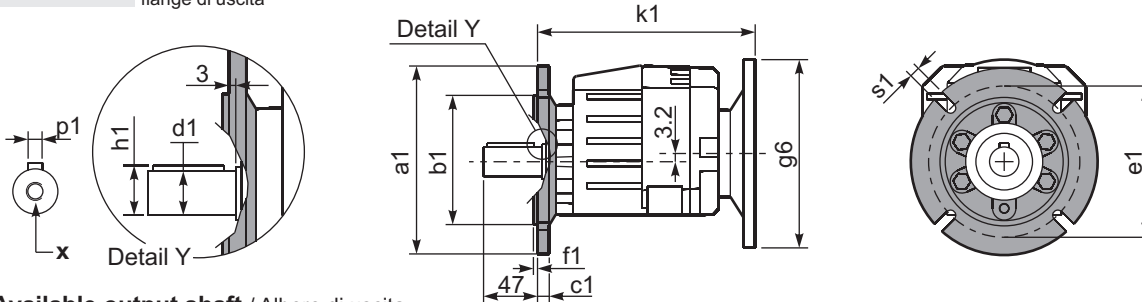
Feet Code	Market reference	G	H	R	L	L1	S	H1	O	øl	S2 only with motor flange	B5 max. Flange	kit code
<b>B1</b>	112	18	85	110	87	50	130	167	15	-	8 80/90B5	-	KC35.9.021
<b>B2</b>	212/3	18	100	130	107.5	60	155	182	17	11	-	-	KC40.9.025
<b>S1</b>	17	18	75	110	90+110	50	145	155	15	9	18 80/90B5	-	KC40.9.022
<b>S2</b>	27	25	90	110	130	-	145	172	20	9	3 80/90B5	-	KC40.9.024
<b>M1</b>	42/3	25	80	110+120	85	-	145	162	15	9	13 80/90B5	-	KC40.9.023
<b>L4</b>	04	13	80	105	76	-	132	162	5	10	13 80/90B5	-	KC35.9.023LM
<b>L5</b>	05	16	100	125	90	-	150	182	6	12	-	-	KC40.9.027LM

Other feet are available, see our web site  
Sono disponibili altri piedini, consulta il nostro sito web

**A see on page bottom**

Most popular types  
Tipi più diffusi

P403A **-F** ... Output flanges  
flange di uscita

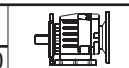


**\*Available output shaft / Albero di uscita**

	Shaft - d1	p1	h1	x
Standard	ø 25x50	8	28	M8x19
On request A richiesta	ø 14x40	5	16	M5x13
	ø 16x40	5	18	M6x16
	ø 19x40	6	21.5	M6x16
	ø 20x40	6	22.5	M8x19
	ø 24x50	8	27	M8x19

**Available output flanges / flange di uscita**

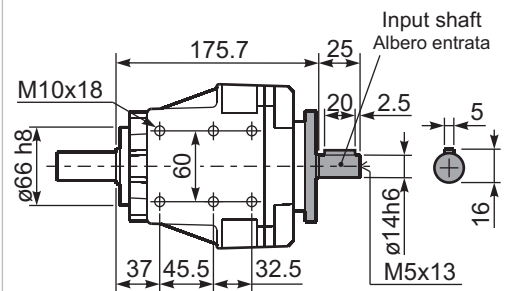
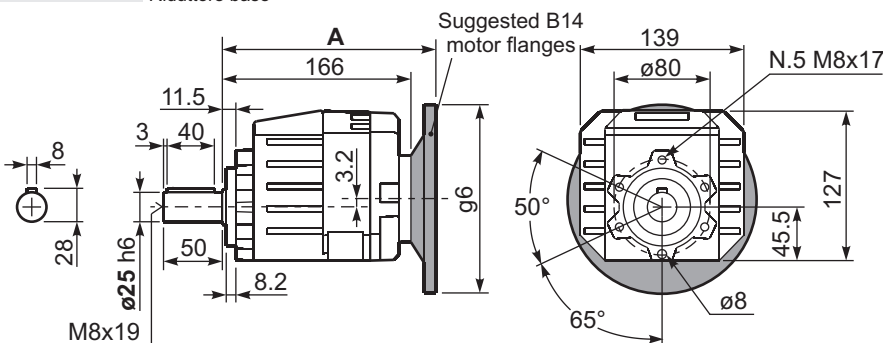
a1 ø	b1	c1	e1	f1	s1	kit code
120	80	10	100	3	9	KC40.9.010
140	95	10	115	3	9	KC40.9.011
160	110	10	130	3	9	KC40.9.012
200	130	11	165	3.5	11	KC40.9.013
250	180	11.5	215	3.5	14	KC40.9.014



With flange and feet only on request. Ask for compatibility

P403A **-N** ... Basic gearbox  
Riduttore base

**R403A-N** ... Input Shaft  
Albero in entrata



B5 Motor Flanges	A	C <sub>max</sub>	g6	k1	kit code
63 B5	182.5	201.2	140	185.5	K050.4.041
71 B5	180.5	211.2	160	183.5	K050.4.042

B14 Motor Flanges	A	C <sub>max</sub>	g6	k1	kit code
56 B14	186.5	170.2	80	189.5	KC40.4.049
63 B14	181.5	176.2	90	184.5	K050.4.047
71 B14	182	183.7	105	185	K050.4.045