

# NSCF 65-160/150/P25VCC4

## Technical data

Company name  
Contact  
Phone number  
e-mail address

Operating data					
1	Pumpe type	Single head pump	Fluid	Water, pure	
2	No. of pumps	1	Operating temperature t A	°C	4
3	Nominal flow	m³/h 0	Max / Min Operating Temperature mech. Seal	°C	120 / -25
4	Nominal head	m 0	pH-value at t A		7
5	Static head	m 0	Density at t A	kg/m³	1000
6	Inlet pressure	kPa 0	Kin. viscosity at t A	mm²/s	1.569
7	Environmental temperature	°C 20	Vapor pressure at t A	kPa	100
8	Available system NPSH	m 0	Altitude		0

Pump data					
9	Lubrication	Standard, Grease lubrication [Std]			
10	Execution	[F] = 2 poles motor unit with standard cuopling			
11	Design	Horizontal		Impeller Ø	Max. mm 180
12	Operating speed	2900 rpm	Stages	1	designed mm 175
13	Suction nozzle	DN 80 /	PN 16 /	EN1092-2	Min. mm 145
14	Discharge nozzle	DN 65 /	PN 16 /	EN1092-2	Flow Nominal m³/h
15	Max. casing pressure	kPa			Max- m³/h 170
16	Max. working pressure	kPa 404.9			Min- m³/h 34.5
17	Impeller type	Radial impeller		Head	Nominal m
18	Head H(Q=0)	m 41			at Qmax m 23.5
19	Max. shaft power	kW 14.7		Shaft power	at Qmin m 41.2
20	Pump weight	kg 60		Efficiency	%
21	Total weight	kg 204.5		NPSH 3%	m

Materials					
22		Pump		Shaft Seal	
23	Volute Casing	Cast Iron		Single mechanical seal, without shaft sleeve	
24	Casing Cover	Cast Iron		eMG12 - Ø28mm	BQ7EGG-WA
25	Impeller	Cast Iron		Mechanical seal diameter	28 mm
26	Shaft	Stainless steel		1. Rotating ring	Carbon graphite resin impregnated
27	Wear ring	Stainless steel		2. Stationary ring	SiC, silicon carbide, sintered press.less
28	Impeller lock nut and washer	Stainless steel		3. Secondary seal	Ethylene propylene rubber (EPDM)
29	Impeller key	Stainless steel		4. Springs	CrNiMo - Steel
30	Fill and drain plugs	Stainless steel		5. Others	EPDM - WRAS
31				Gaskets of the pump	Ethylene propylene rubber (EPDM)
32					
33					
34					
35					
36					
37					
38					
39					
40					
41					

Motor data				Coupling			
Electrical and dimensional data refer to IE3 motor							
42	Manufacturer	Lowara		Manufacturer	Flender		
43	Specific design	IE3 3ph Surface Motor - Premium Efficiency		Series	Standard Coupling - N-EUPEX - Type B		
44	Type	PLM 160 B3 15 kW		Shaft diameter	Pump 24 mm	Motor 42 mm	
45	Rated power	15 kW	Rated current 26.6 A	Frame size	95		
46	Nominal speed	2940 rpm	Rated voltage 400 V	Spacer length	mm 3		
47	Frame size	160	Service factor 1	Weight	kg 2.2		
48	Weight kg	99.5	Degree of protection IP55	Coupling protection	COUPLGUARD 175x152PNTD		0.33 kg

Base plate			Remarks		
49	Name	BASE 6B 1250X540 BLU			
50	Weight	kg 42.5			

# NSCF 65-160/150/P25VCC4

## Performance curve

Company name  
Contact  
Phone number  
e-mail address

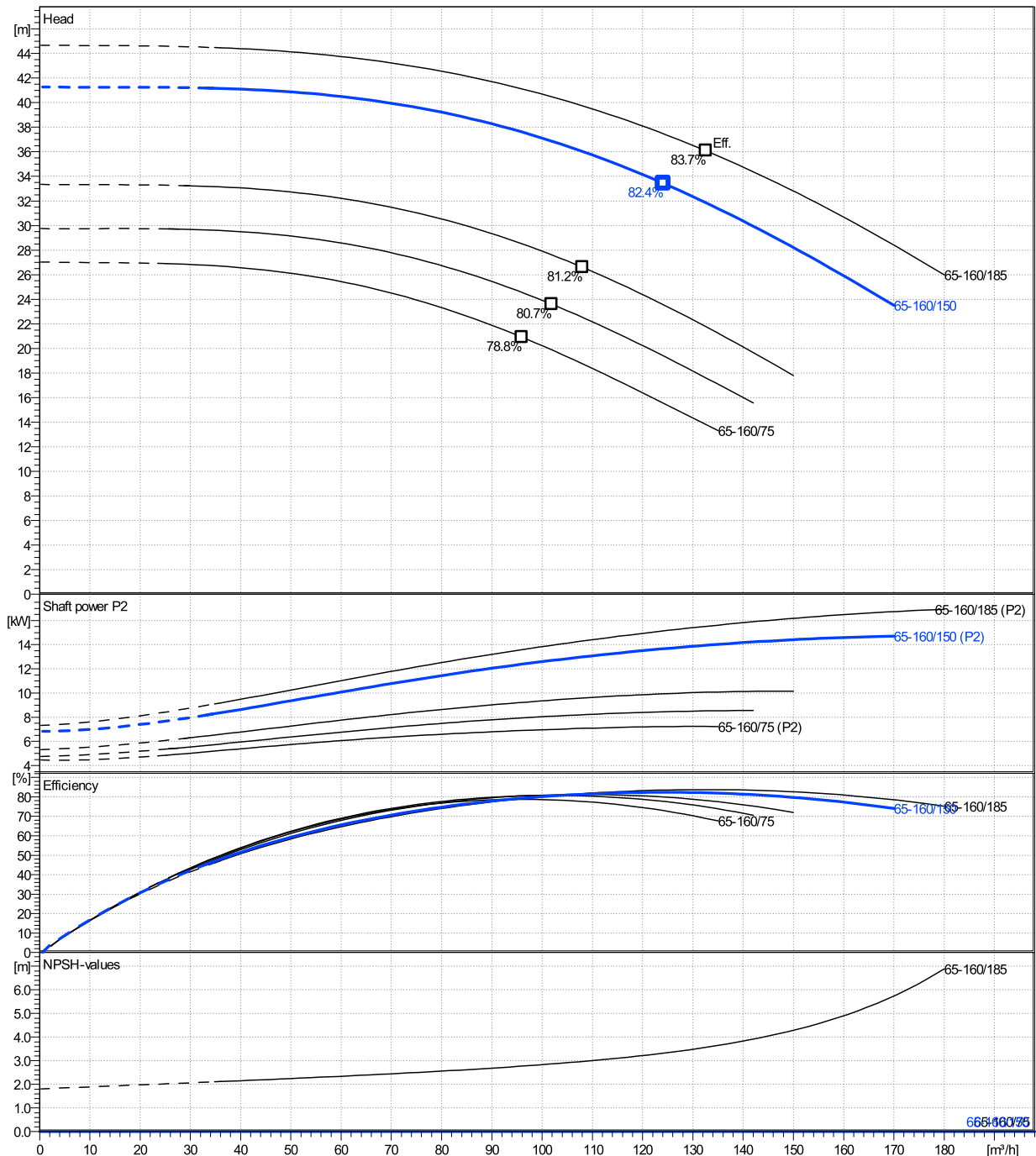
	Ø mm	Pump capacity			Pump head		Shaft power P2			Frequency	Hz	50
		Operating range Min. m³/h	Max. m³/h	η Max. m³/h	H(Q=0) m	η Max. m	P2(Q=0) kW	Max. kW	η Max. kW	Operating speed	rpm	2900
actual	175	34.5	170	124	41.3	33.4		14.7	13.7	Nominal flow	m³/h	0
Min.	0	/	/	96	27	20.9		/	6.9	Nominal head	m	0
Max.	180	/	/	133	44.7	36.1		/	15.5	Inlet pressure	kPa	0
										Static head	m	0

**Power datas referred to:**

Water, pure [100%] ; 4°C; 1000kg/m³; 1.57mm²/s

**hydr. Performance acceptance acc. To EN ISO 9906 Class Grade 3B**

MEI: >=0,4



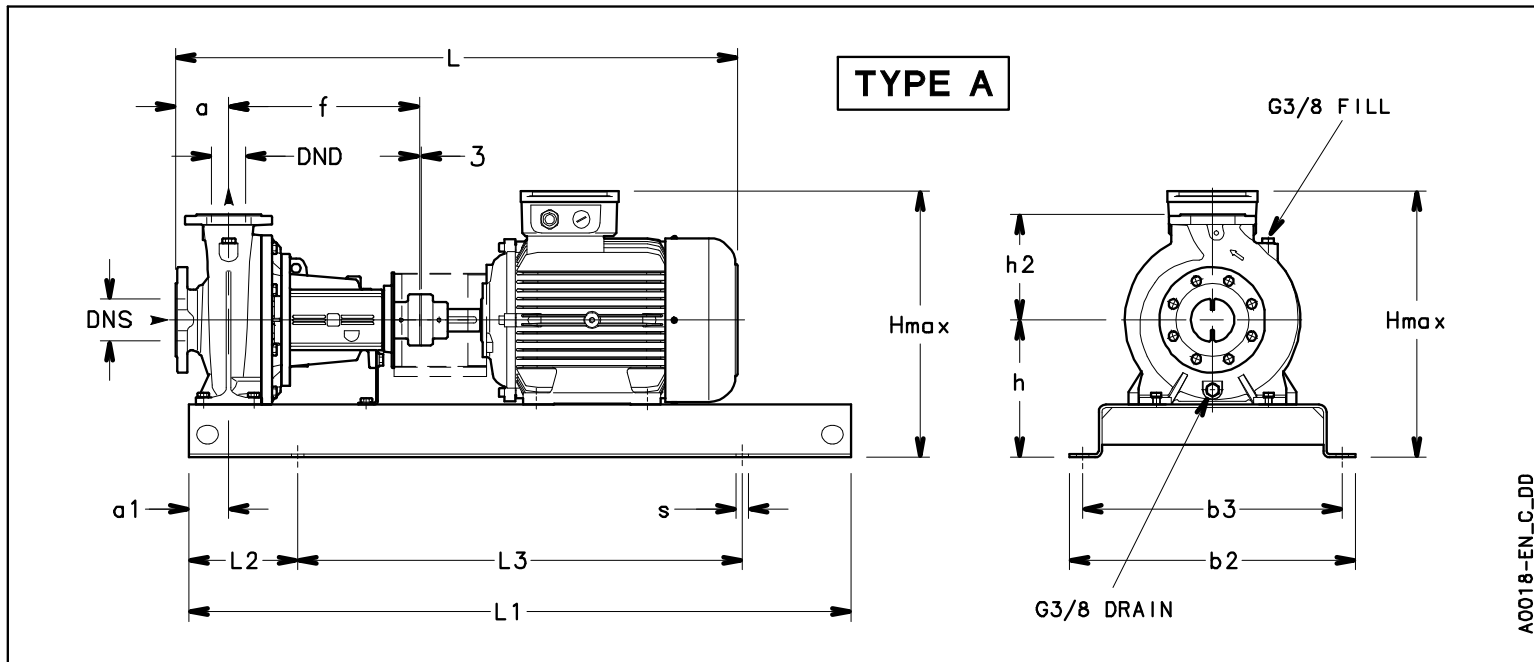
# NSCF 65-160/150/P25VCC4

## Dimensions

Company name  
Contact  
Phone number  
e-mail address

Frame mounted  
[F] = 2 poles motor unit with standard coupling  
PLM 160 B3 15 kW

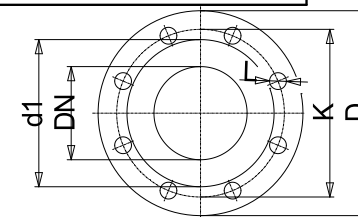
Electrical and dimensional data refer to IE3 motor



Dimensions		[ mm ]	
a	100		
a1	75		
AD	240		
b2	540		
b3	490		
DND	65		
DNS	80		
f	360		
Guard	163		
h	260		
h2	200		
Hmax	500		
L	1067		
L1	1250		
L2	205		
L3	840		
s	4xØ24		
Type	A		
Volumen	0.28809		
x	3		

Weight	
Total weight	204.53 kg

Connections			
Suction nozzle		Discharge nozzle	
DN 80		DN 65	
PN 16		PN 16	
EN1092-2		EN1092-2	
C	22	C	20
D	200	D	185
df	132	df	118
DN	80	DN	65
K	160	K	145
L	8 x 19	L	4 x 19



Note:  
Weight and Dimensions of selected Hydrovar are NOT considered.  
Please refer to additional datasheet.

### Dimensions and weight without obligation

Project	Xylect-20148153	Created by		Last update	4/18/2025
Block	NSCF 65-160/185/P25VCC4	Created on	4/18/2025		