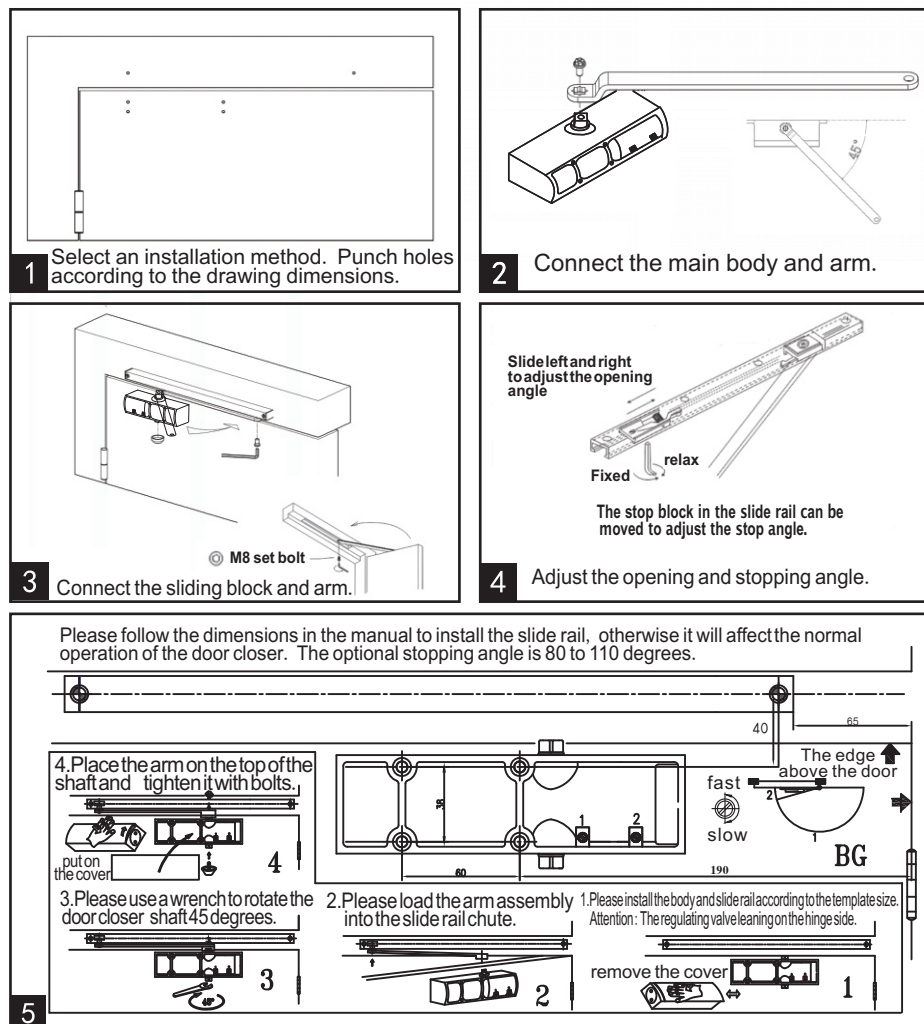


H600 Installation Instruction For Slide Type Door Closer



Installation Sequence Diagram

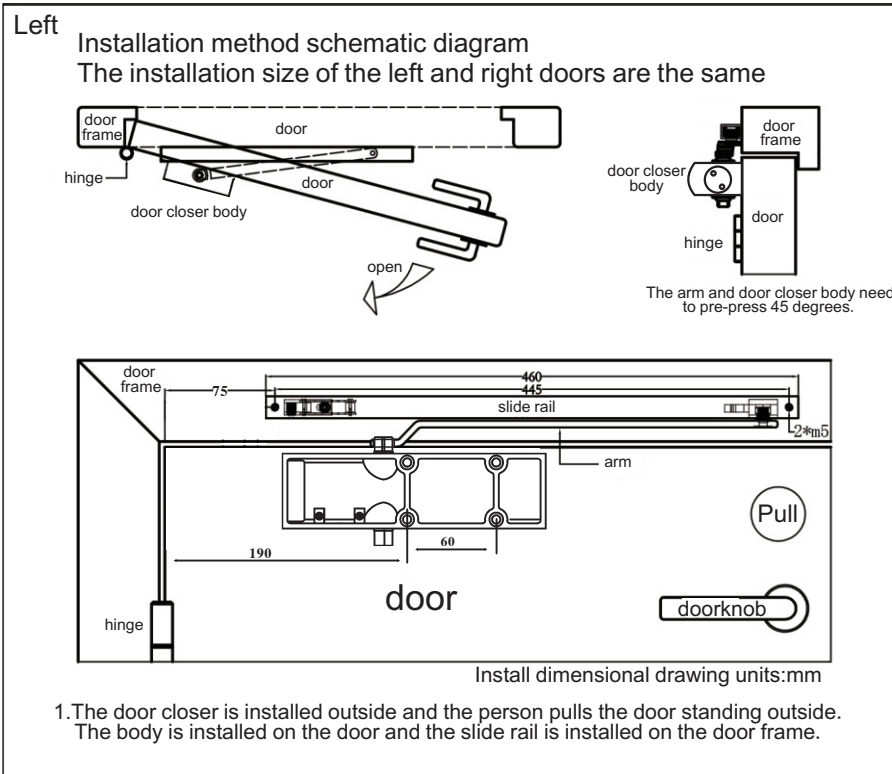
Installation instructions

- 1: Determine the installation method of the door closer according to the actual situation and use requirements of the door.
- 2: After determining the installation method, please drawing the dimensions on the door leaf and door frame according to the dimensions listed in the installation size and then install the door closer and slide rail. The plastic plugs at both ends of the slide rail should be stuffed in before the slide rail fixing screw is tightened, otherwise the slide rail will be deformed when the slide rail fixing screw is tightened.
- 3: After installing the door closer body, install the arm to the four-square shaft of the door closer, install a plastic cap on the other side of the shaft. The arm can be parallel and pre-pressed 45 degrees (Whether need pre-pressing is depends on the installation method), and then tighten the arm and slide connection screws.
- 4: The function of the metal stop block on the slide rail is to open the door positioning of the door closer, loosen the Allen screw when adjusting the positioning angle, lock and fix the fixing block when it to a suitable position. If do not need position can do not install the fixing block.
- 5: To adjust the closing speed of the door closer, it is recommended to adjust the speed to close the door from 90 degrees to 0 degrees for 5 second. The regulating valve must not be screwed out of the door closer, otherwise it will cause oil leakage.

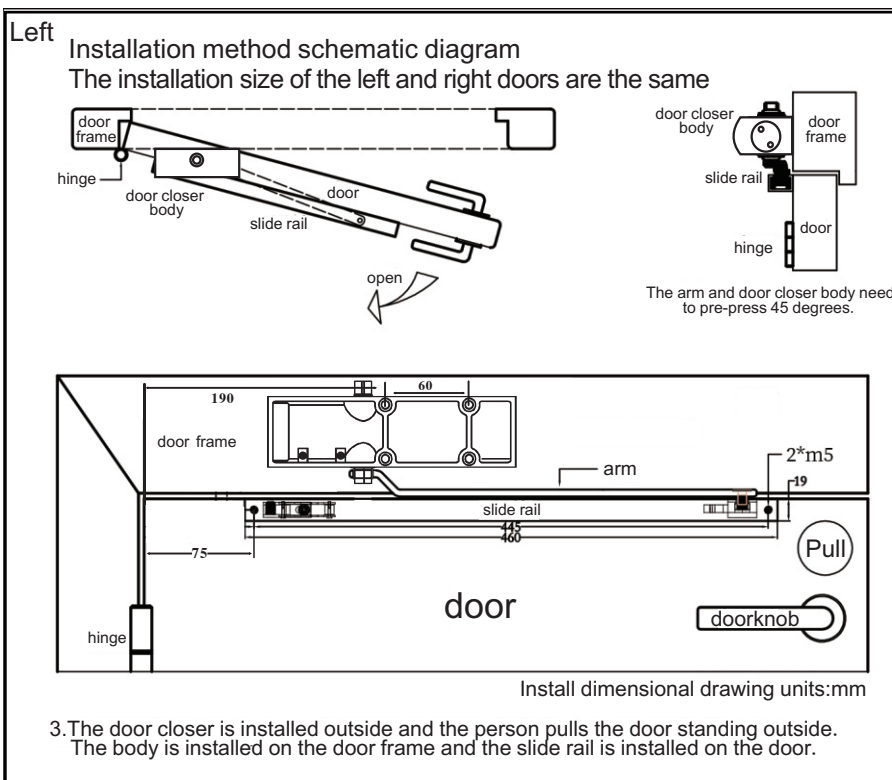


Matters Need Attention

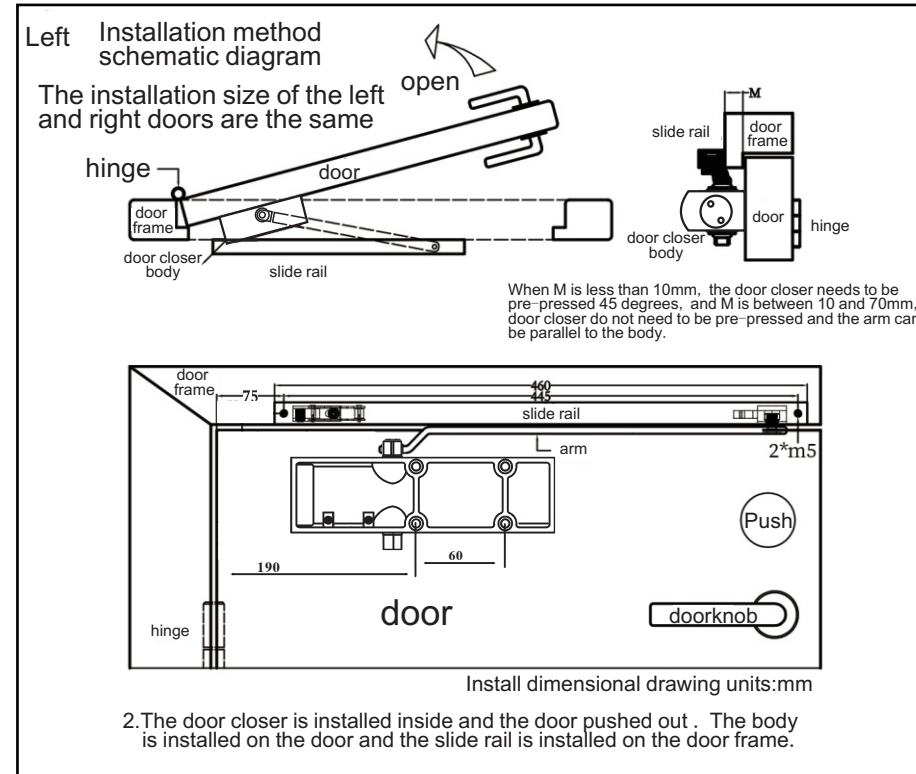
1. If the door closer with 90 degrees positioning is not recommended for slide rail installation.
2. The regulating valve must not be screwed out of the door closer, otherwise it will cause oil leakage.



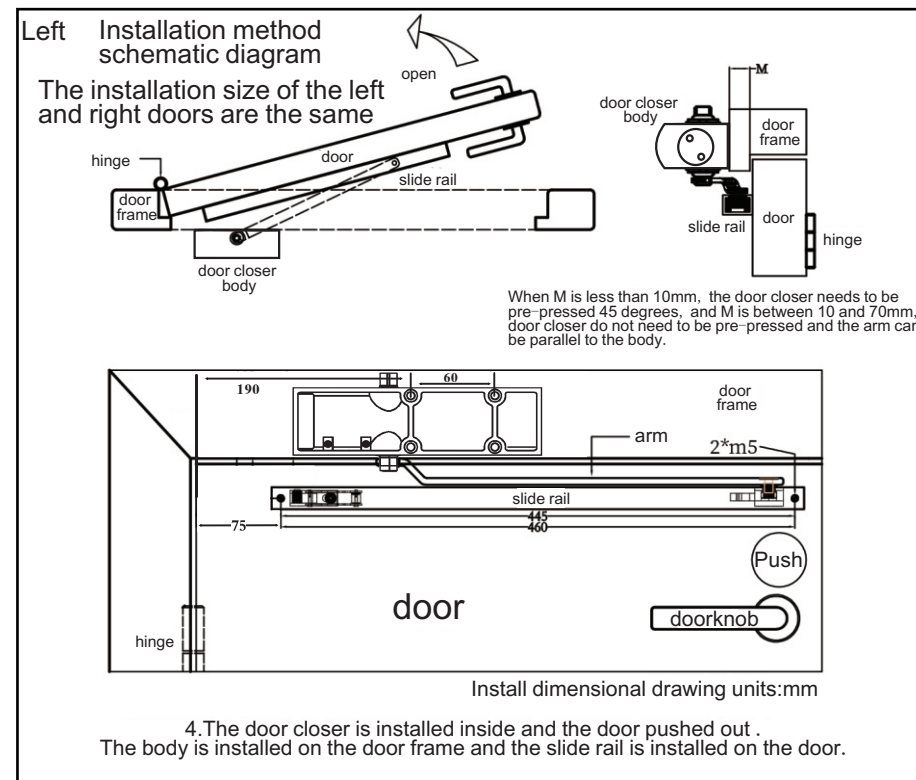
1.Pull the door-standard installation



3.Push the door-inverse installation

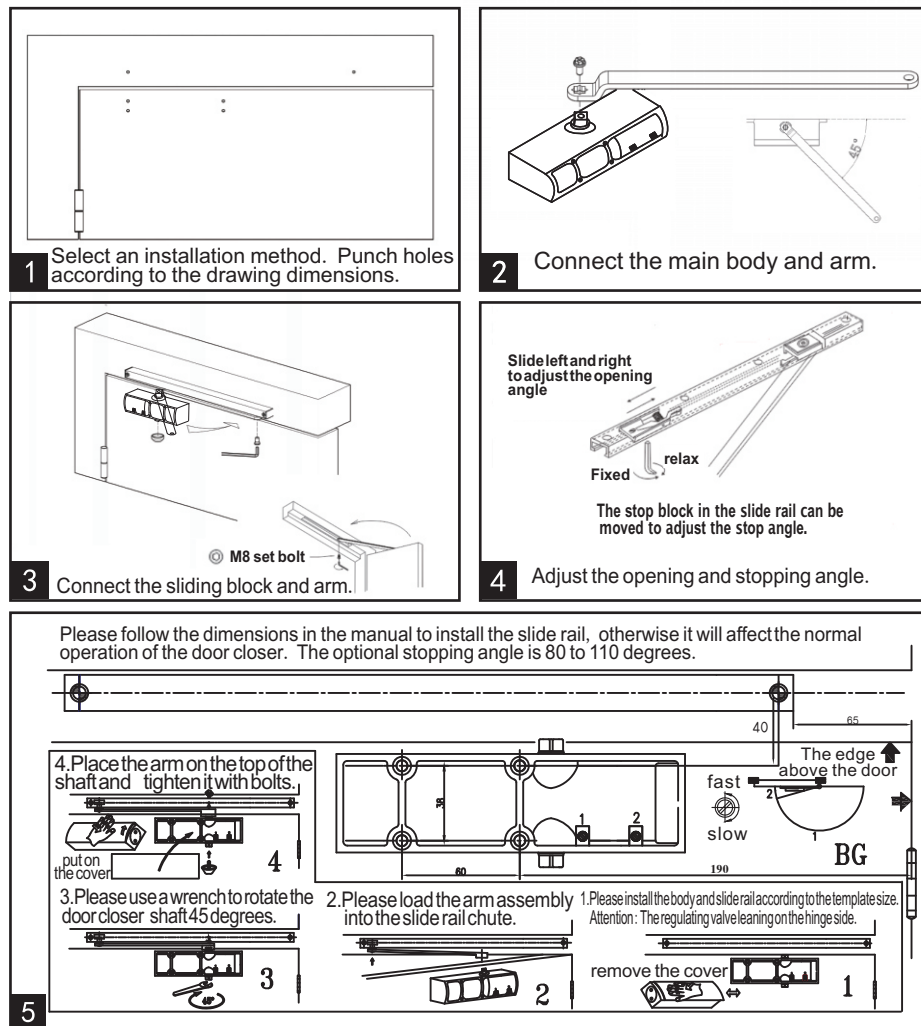


2.Push the door-standard installation



4.Pull the door-inverse installation

H600 Installation Instruction For Slide Type Door Closer



Installation Sequence Diagram

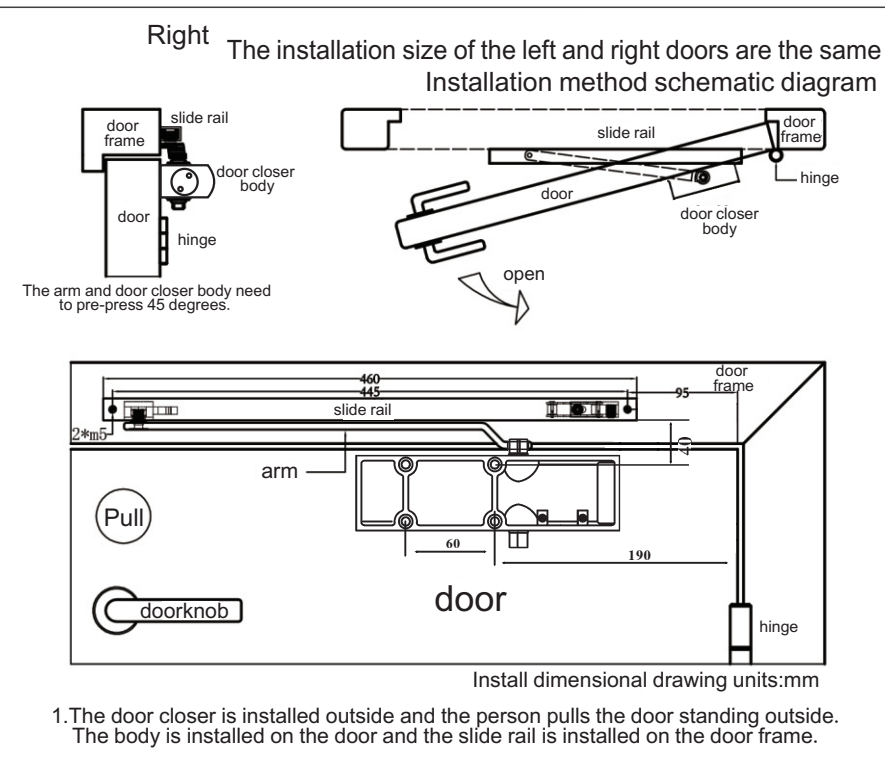
Installation instructions

- 1: Determine the installation method of the door closer according to the actual situation and use requirements of the door.
- 2: After determining the installation method, please drawing the dimensions on the door leaf and door frame according to the dimensions listed in the installation size and then install the door closer and slide rail. The plastic plugs at both ends of the slide rail should be stuffed in before the slide rail fixing screw is tightened, otherwise the slide rail will be deformed when the slide rail fixing screw is tightened.
- 3: After installing the door closer body, install the arm to the four-square shaft of the door closer, install a plastic cap on the other side of the shaft. The arm can be parallel and pre-pressed 45 degrees (Whether need pre-pressing is depends on the installation method), and then tighten the arm and slide connection screws.
- 4: The function of the metal stop block on the slide rail is to open the door positioning of the door closer, loosen the Allen screw when adjusting the positioning angle, lock and fix the fixing block when it to a suitable position. If do not need position can do not install the fixing block.
- 5: To adjust the closing speed of the door closer, it is recommended to adjust the speed to close the door from 90 degrees to 0 degrees for 5 second. The regulating valve must not be screwed out of the door closer, otherwise it will cause oil leakage.

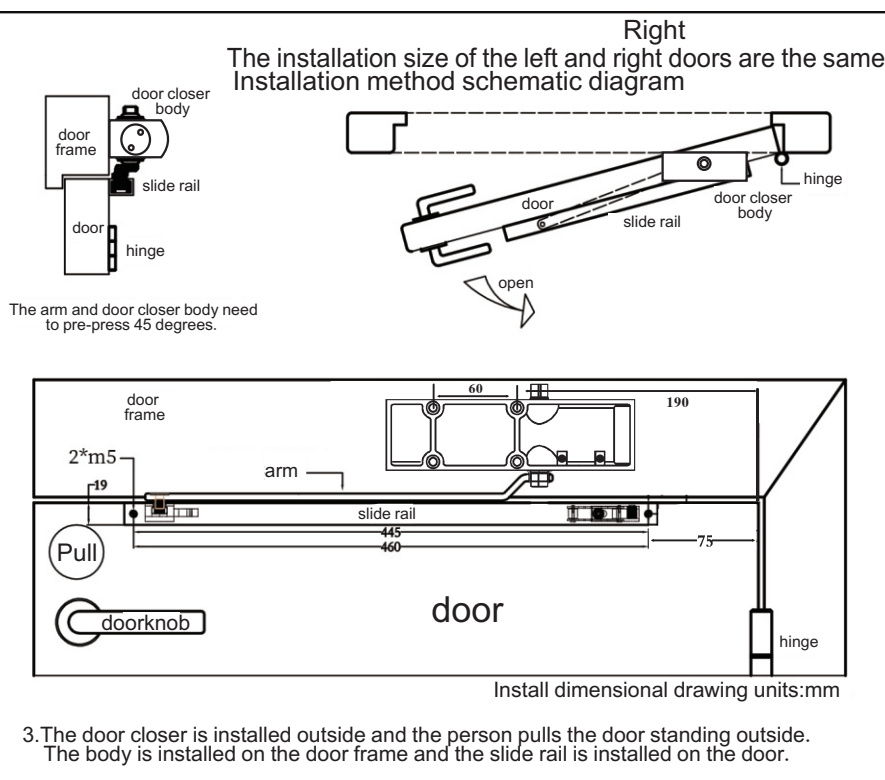


Matters Need Attention

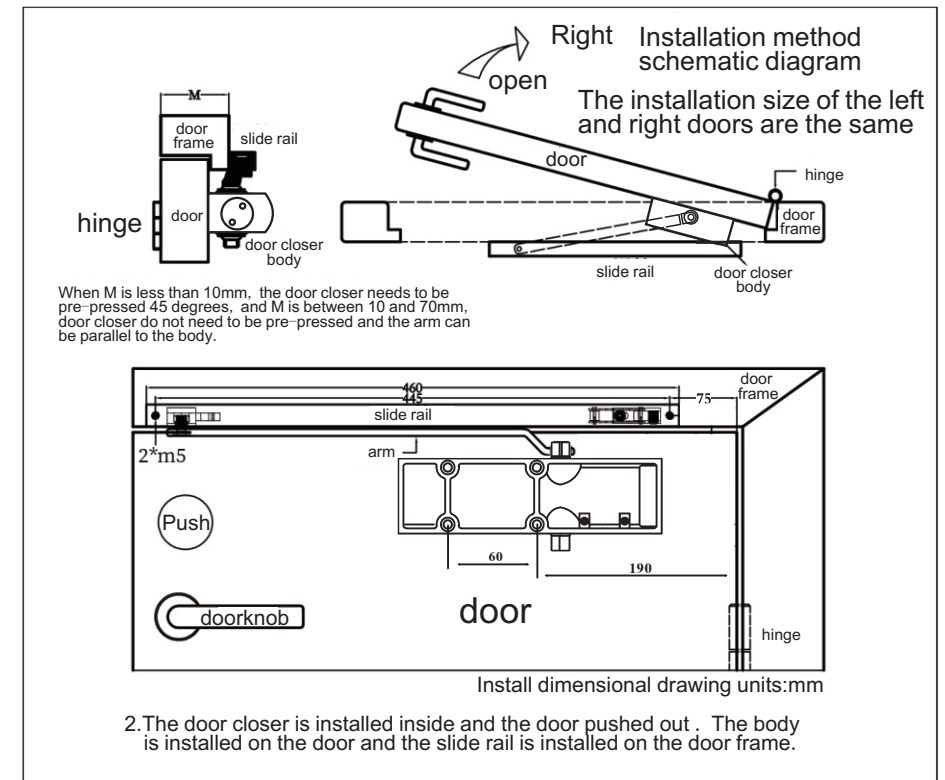
1. If the door closer with 90 degrees positioning is not recommended for slide rail installation.
2. The regulating valve must not be screwed out of the door closer, otherwise it will cause oil leakage.



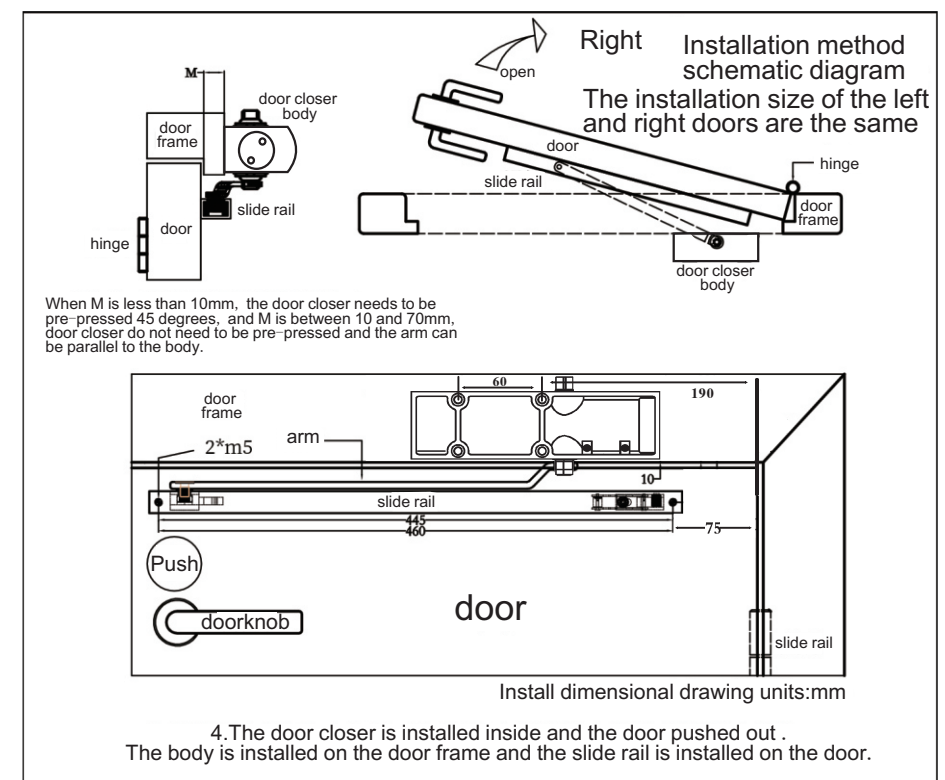
1. Pull the door-standard installation



3. Push the door-inverse installation



2. Push the door-standard installation



4. Pull the door-inverse installation