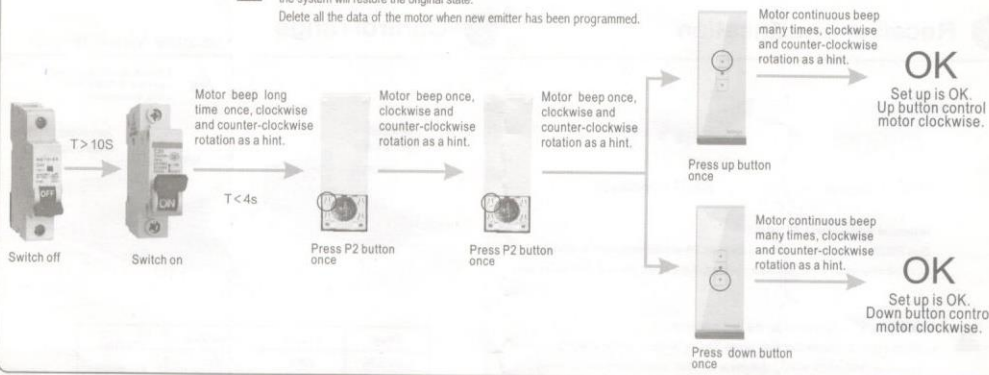


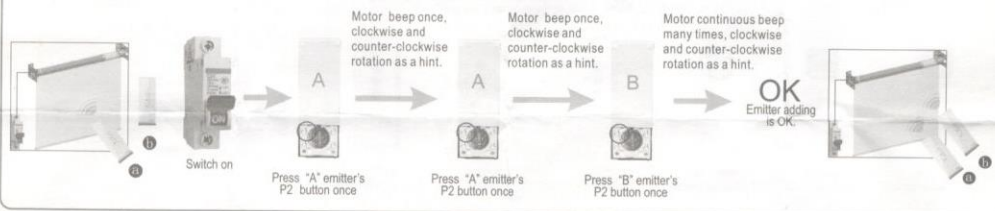
## 7 Programming

**!** The interval of each button must within 6 seconds of re-setting otherwise the system will restore the original state.  
Delete all the data of the motor when new emitter has been programmed.



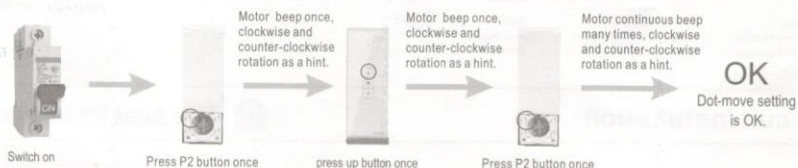
## 8 Add Emitter

**!** The interval of each button must within 6 seconds of re-setting otherwise the system will restore the original state.  
The "A" emitter is programmed, "B" emitter is unprogrammed.



## 9 Dot-move setting

**!** The interval of each button must within 6 seconds of re-setting otherwise the system will restore the original state.  
Repeat this setting, the dot-move function is cancelled.



## 10 Delete all emitter channel

**!** The interval of each button must within 6 seconds of re-setting otherwise the system will restore the original state.

