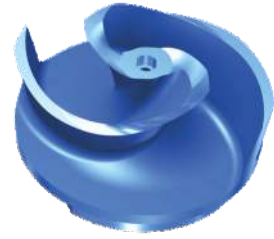
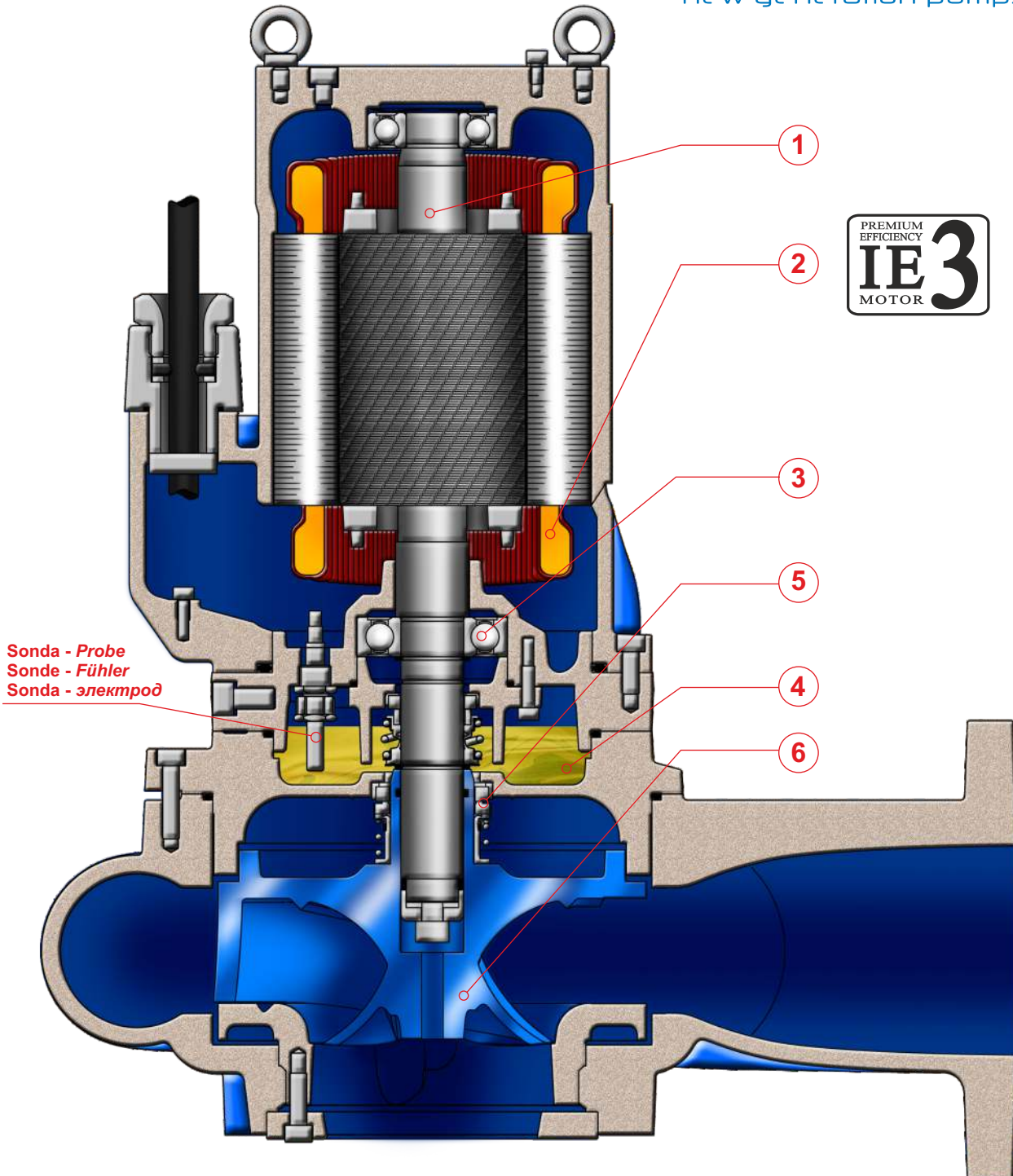


HIGH EFFICIENCY

Elettropompe sommergibili multicanale "alto rendimento" 2/4 poli
 Submersible multichannel pumps of "high efficiency" 2/4-pole
 Pompes submersibles multivoies "à haut rendement" 2/4 pôles
 Tauchmotorpumpen mit Mehrkanallaufwerk "Hochleistung" 2/4-polig
 Electro-Bombas sumergibles multicanales de "alta eficiencia" 2/4 polos
 Многоканальные погружные насосы с высоким КПД 2/4 полюса



Solve & Save
 new generation pumps



HIGH EFFICIENCY



IMPIEGHI

Le elettropompe sommergibili multicanale ad "alto rendimento" con profilo palare autopulente possono essere utilizzate in quasi tutte le applicazioni; sono impiegate prevalentemente per il pompaggio di reflui civili anche non grigliati, contenenti corpi solidi e materiali fibrosi, acque di processo, fanghi civili e industriali, pozzi di raccolta acque usate in generale.

PARTICOLARITÀ COSTRUTTIVE

Elettropompe sommergibili di robusta e compatta costruzione, motori elettrici alloggiati in vano a tenuta stagna, collegati mediante alberi di lunghezze ridotte alle giranti situate in voluta tramite interposizione di camera olio tra parte idraulica e motore elettrico.

MATERIALI

Fusioni principali	Ghisa EN-GJL-250
Girante	Ghisa GS400 / AISI316L
Cavo elettrico	Neoprene H07RN/F
Albero	Acciaio inossidabile AISI 431
O-rings e paraolio	Nitrile
Bullonerie	Classe A4 - AISI316
Tenuta meccanica	Carburo di silicio / Carburo di silicio



APPLICATIONS

Les pompes submersibles multivoies de «haute performance avec pales autonettoyantes peuvent être utilisées dans n'importe quelle application ; elles sont principalement utilisées pour le pompage des effluents domestiques également pas grillés, contenant des matières solides et des matériaux fibreux, eaux de traitement, boues civiles et industrielles, puits pour la collecte des eaux usées en général.

PARTICULARITÉ DE CONSTRUCTION

Pompes submersibles robustes et compactes, moteurs électriques logés en enceinte étanche, reliés par des arbres de longueurs réduites aux roues, avec interposition d'une chambre à huile entre la partie hydraulique et le moteur électrique.

MATÉRIAUX

Moulures principales	Fonte EN-GJL-250
Roue	Fonte Sferoidale GS400 / AISI316L
Câble électrique	Néoprène H07RN/F
Arbre	Acier inoxydable AISI 431
O-ring et joints	Nitrile
vis	Classe A4 - AISI316
Garniture mécanique	Carb. de silicium / carbure de silicium



UTILIZACION

Las electro-bombas sumergibles multicanales de "alto rendimiento" con perfil de auto-limpieza de la hoja pueden ser utilizadas en casi cualquier aplicación; son utilizadas principalmente para el bombeo de aguas residuales, sin rejillas, que contienen cuerpos sólidos y materiales fibrosos, aguas de proceso, lodos civiles e industriales, colectores de aguas residuales en general.

DIFERENCIAS PRINCIPALES

Son bombas sumergibles de robusta y compacta construcción, motores eléctricos situados en compartimento separado, conectadas mediante ejes cortos con los impulsores interpuestos con una cámara de aceite entre la parte hidráulica i el motor eléctrico.

MATERIALES

Aleaciones principales	Hierro Fundido EN-GJL-250
Impulsor (turbina)	Hierro Fundido GS400 / AISI316L
Cable eléctrico	Neopreno H07RN/F
Eje	Acero inoxidable AISI 431
Anillo de sellados y O-Rings	Nitrilo
Tornillos	Clase A4 - AISI316
Sello mecánico	Carburo de silicio / Carburo de silicio



APPLICATION

The submersible multichannel "high performance" pumps with self-cleaning blade profile can be used in almost any application; they are mainly used for the pumping of domestic effluent containing solids and fibrous materials, process water, civil and industrial sludge, waste water sumps in general.

CONSTRUCTION DATA

Submersible electric pumps, robust in construction, watertight electric motors accommodated in compartment, connected, by shafts of reduced lengths, to the impellers situated at the pump casing by the interposition of oil chamber between the hydraulic side and the electric motor.

MATERIALS

Motor housing	Cast iron EN-GJL-250
Impeller	Cast-iron GS400 / AISI316L
Electric cable	Neoprene H07RN/F
Shaft	Stainless Steel AISI 431
O-rings and lip seal	Nitrile
Bolts	A4 - AISI316 class
Mechanical seal	Silicon Carbide / Silicon Carbide



EINSATZBEREICHE

Die Hochleistungs-Tauchmotorpumpen mit Mehrkanallaufwerk mit selbstreinigendem Schaufelprofil bieten vielfältige Einsatzmöglichkeiten. Sie werden vorwiegend zur Förderung von häuslichen auch nicht gefilterten Abwässern mit Fest- und Faserstoffgehalt, Prozesswasser, Schlamm, gesammeltes Wasser.

AUSFÜHRUNG

Robuste Tauchmotorpumpe mit wasserdichtem Motor, kompakte Bauart, Laufwerk im Pumpengehäuse durch Ölkammer zum Motor getrennt.

WERKSTOFFE

Motorgehäuse	Grauguss EN-GJL-250
Laufwerk	Sphäroguss GS400 / AISI316L
Anschlusskabel	Neoprene H07RN/F
Welle	Edelstahl AISI 431
Wellendichtring und O-Ringe	Nitril
Schrauben	Edelstahl A4 - AISI316
Gleitringdichtung	Siliziumkarbid / Siliziumkarbid



ОБЛАСТЬ ПРИМЕНЕНИЯ

Многоканальные погружные насосы высокой производительности с самоочищающимся профилем могут спользоваться почти для любых применений; они используются, в основном, для перекачки хозяйственных стоков, в том числе неочищенных, с содержанием твердых частиц и волокнистых материалов, технической воды, промышленных и бытовых отходов и, в целом, для отстойников сточных вод.

КОНСТРУКЦИОННЫЕ ОСОБЕННОСТИ

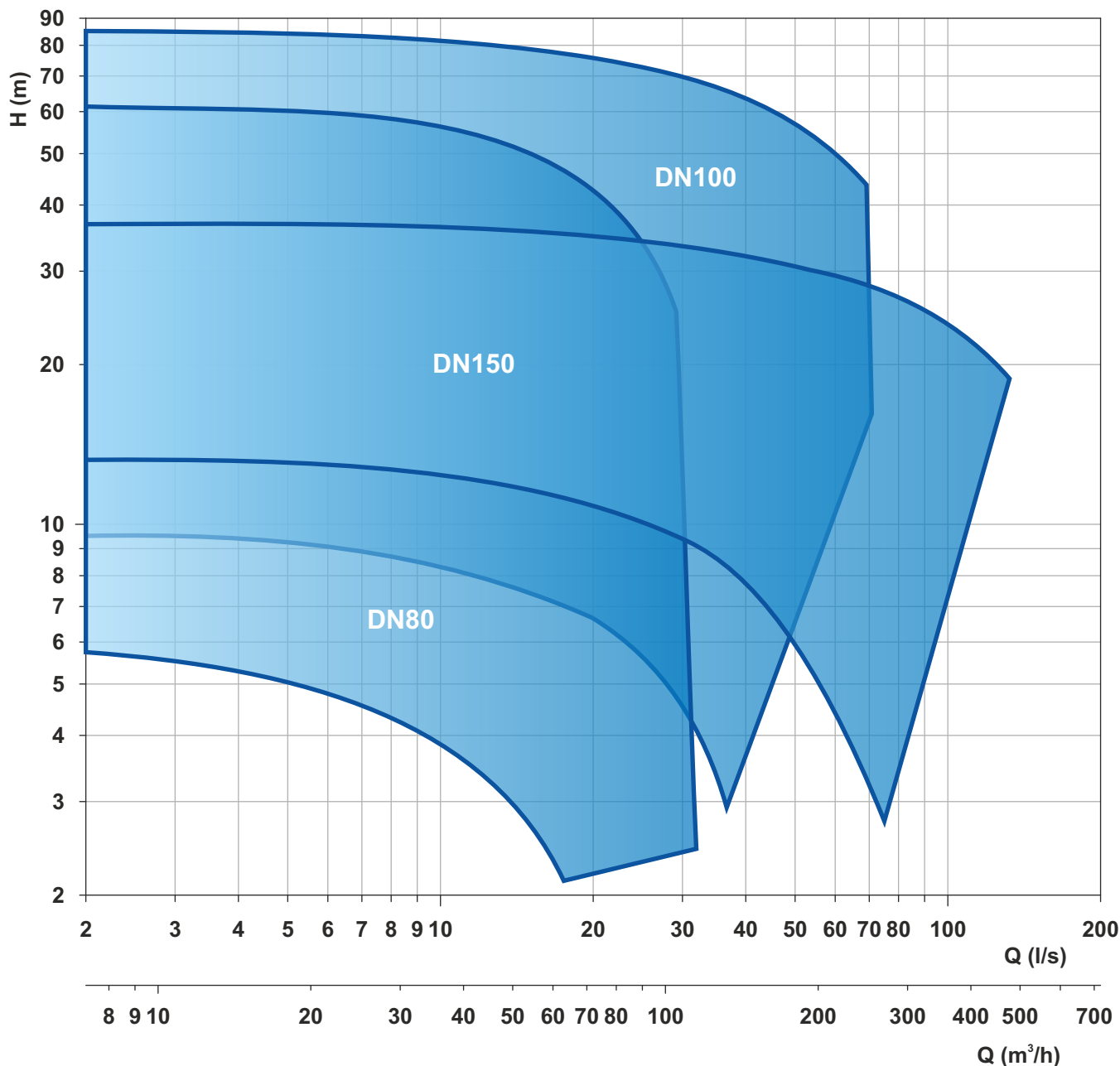
Погружные электронасосы с прочной и компактной конструкцией. Электродвигатели размещены в секции с герметичным уплотнением и соединены через валы небольшой длины с рабочими колесами, расположенными в гидравлической камере. Валы проходят через масляную камеру между гидравликой и электродвигателем.

МАТЕРИАЛЫ

Основные литые компоненты	Чугун EN-GJL-250
Рабочее колесо	Чугун GS400 / AISI316L
Электрокабель	Неопрен H07RN/F
Вал	Нержавеющая сталь AISI 431 / Дуплекс
Уплот. кольца и манжета	Нитрил
Винты	Класс A4 - AISI316
Мех. Уплотнение	Карбид кремния/Карбид кремния.

HIGH EFFICIENCY

Elettropompe sommergibili multicanale "alto rendimento" 2/4 poli
 Submersible multichannel pumps of "high efficiency" 2/4-pole
 Pompes submersibles multivoies "à haut rendement" 2/4 pôles
 Tauchmotorpumpen mit Mehrkanallaufrad "Hochleistung" 2/4-polig
 Electro-Bombas sumergibles multicanales de "alta eficiencia" 2/4 polos
 Многоканальные погружные насосы с высоким КПД 2/4 полюса



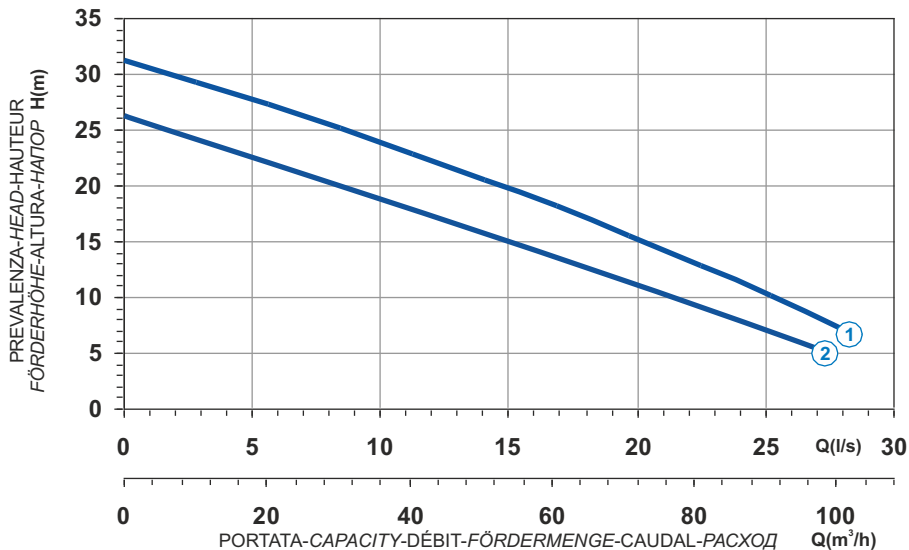
Le schede tecniche sono disponibili al sito www.faggiolatipumps.com
 Technical data sheets are available on our web site www.faggiolatipumps.com
 Les fiches techniques sont disponibles sur notre site web www.faggiolatipumps.com
 Technische Datenblätter finden Sie auf unserer Internetseite www.faggiolatipumps.com
 Las hojas de datos técnicas están disponibles en nuestro web site www.faggiolatipumps.com
 Технические спецификации доступны на веб-сайте www.faggiolatipumps.com



- Ghisa EN-GJL-250
- Fonte EN-GJL-250
- Hierro fundido EN-GJL-250

- Cast Iron EN-GJL-250
- Grauguss EN-GJL-250
- Чугун EN-GJL-250

Curva caratteristica - Performance curve - Courbe caractéristique
Kennlinie - Curva característica - Характеристическая кривая

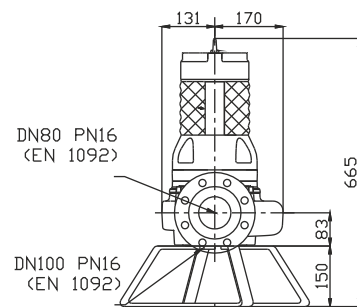
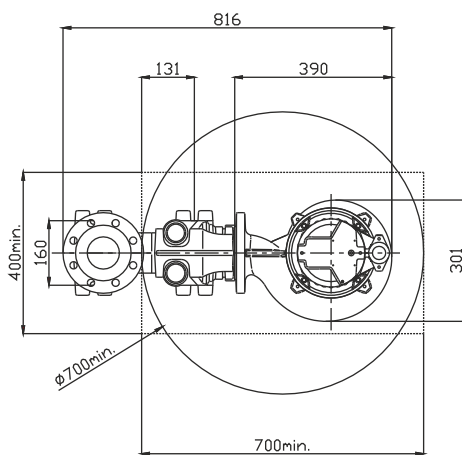
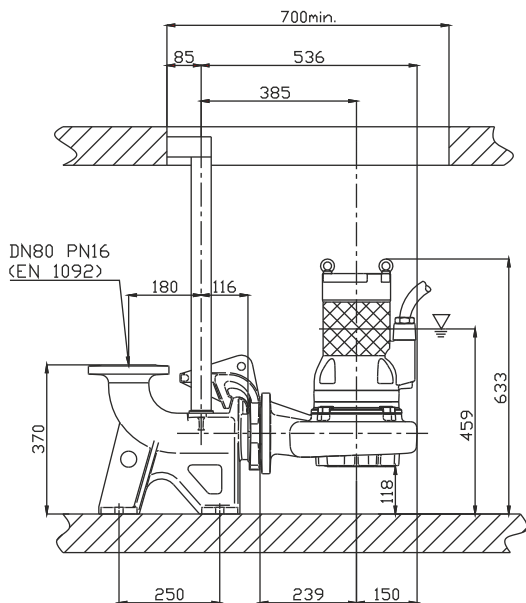





Power supply	3ph 400/690V 50Hz
R.P.M.	2850
Free passage (mm)	25
Discharge (mm)	DN 80
Max Weight (Kg)	87

Curve N°	Code	Type	MOTOR			ATEX code
			Rated power P2 (kW)	Rated current I (A)	Starting current Is (A)	
1	7001344	G210R2H1-M25AA2	5,7	10,9	64,3	7005951
2	7005051	G210R2H3-M25AA2	4,2	10,4	61,4	7004875

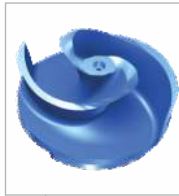
Dimensioni - Dimensions - Dimensions - Abmessungen - Dimensiones - Габариты (mm)

▽ LIVELLO MINIMO DI SOMMERSIBILITÀ
MINIMUM SUBMERSIBLE LEVEL
NIVEAU MINIMUM D'IMMERSION
MINDESTWASSERSTAND
NIVEL SUMERGIBLE MÍNIMO
МИНИМАЛЬНАЯ ГЛУБИНА ПОГРУЖЕНИЯ

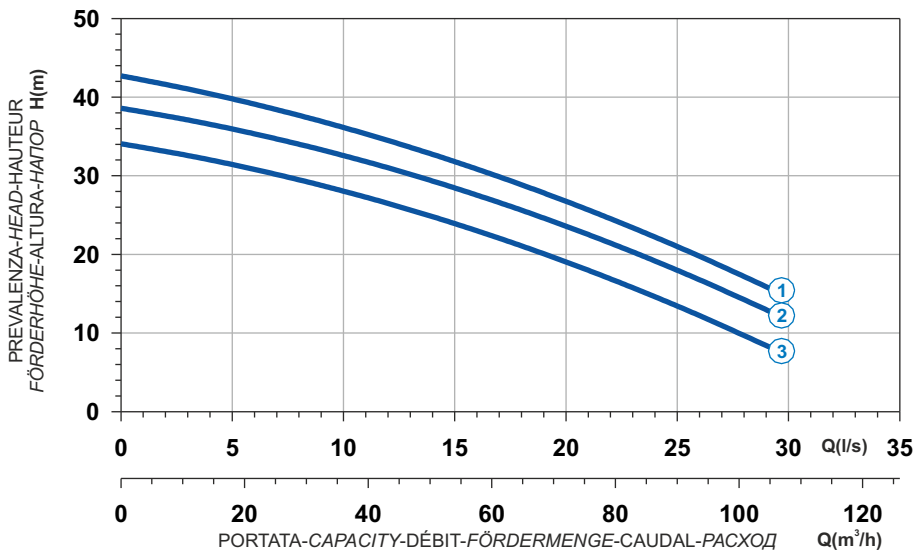



 Ghisa EN-GJL-250
 Fonte EN-GJL-250
 Hierro fundido EN-GJL-250

 Cast Iron EN-GJL-250
 Grauguss EN-GJL-250
 Чугун EN-GJL-250



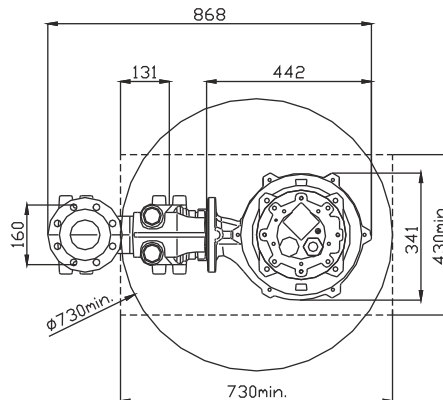
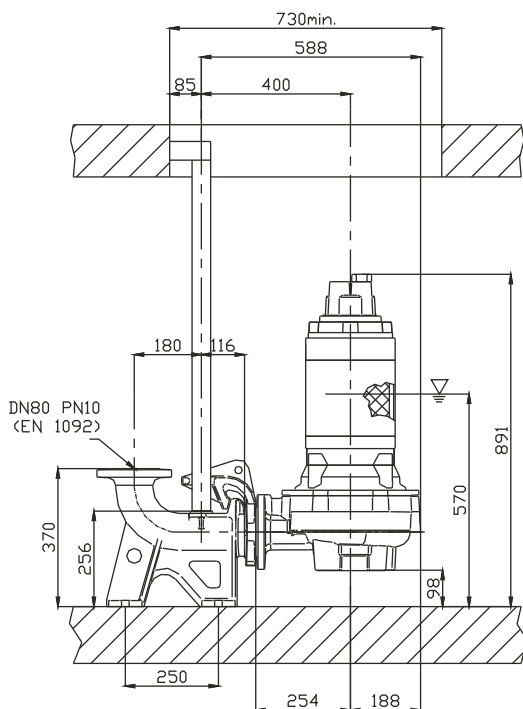
Curva caratteristica - Performance curve - Courbe caractéristique
Kennlinie - Curva característica - Характеристическая кривая



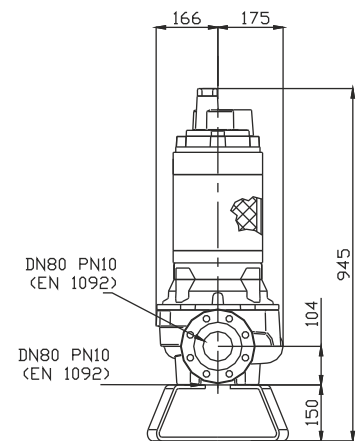
Curve N°	Code	Type	MOTOR			ATEX code 
			Rated power P2 (kW)	Rated current I (A)	Starting current Is (A)	
1	7006980	G211R2H1-M30AA2	10	18	106	7008344
2	7007007	G211R2H2-M30AA2	9	16,2	95,6	7008579
3	7007029	G211R2H3-M30AA2	7,5	13,5	79,6	7008580

Power supply	3ph 400/690V 50Hz
R.P.M.	2850
Free passage (mm)	30
Discharge (mm)	DN 80
Max Weight (Kg)	164

Dimensioni - Dimensions - Dimensions - Abmessungen - Dimensiones - Габариты (mm)



▽ LIVELLO MINIMO DI SOMMERGIBILITÀ
 MINIMUM SUBMERSIBLE LEVEL
 NIVEAU MINIMUM D'IMMERSION
 MINDESTWASSERSTAND
 NIVEL SUMERGIBLE MÍNIMO
 МИНИМАЛЬНАЯ ГЛУБИНА ПОГРУЖЕНИЯ



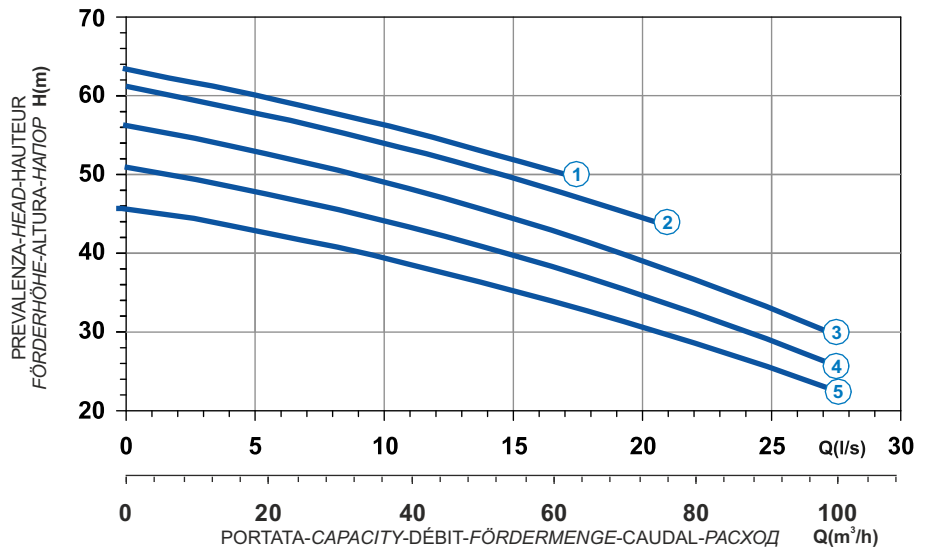
Versione disponibile con mantello di raffreddamento - Type available also with cooling jacket
 Version disponible avec chemise de refroidissement - Ausführung auch mit Kühlmantel lieferbar
 Disponible también con camisa de refrigeración - Вариант доступен с рубашкой охлаждения



Ghisa EN-GJL-250
 Fonte EN-GJL-250
 Hierro fundido EN-GJL-250

Cast Iron EN-GJL-250
 Grauguss EN-GJL-250
 Чугун EN-GJL-250

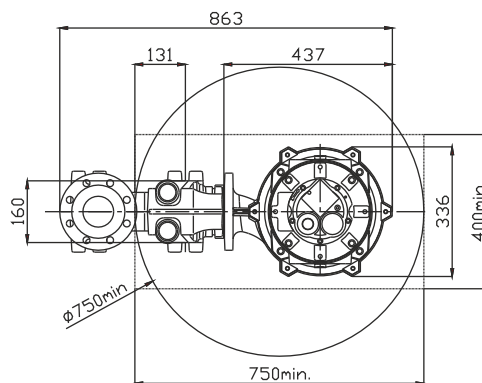
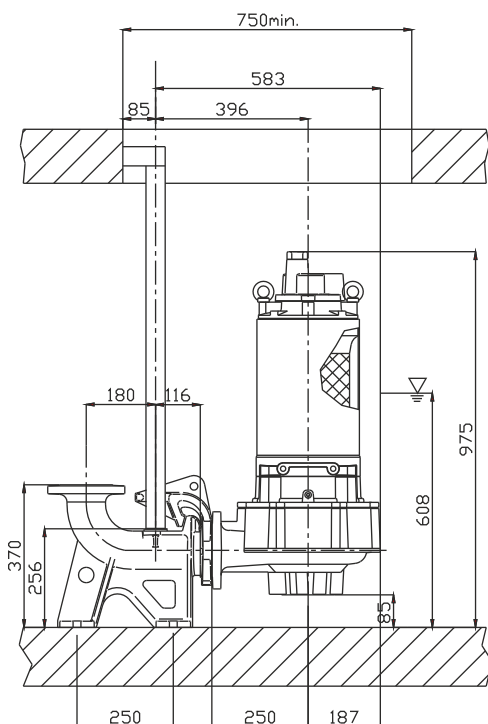
Curva caratteristica - Performance curve - Courbe caractéristique
 Kennlinie - Curva característica - Характеристическая кривая



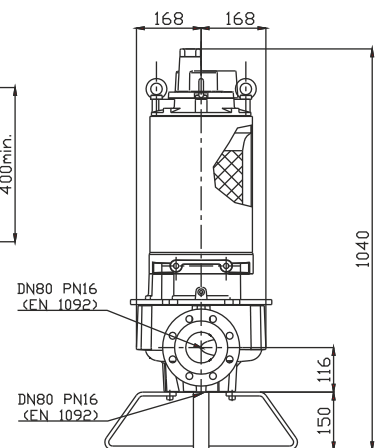
Power supply	3ph 400/690V-50Hz
R.P.M.	2891
Free passage (mm)	32
Discharge (mm)	DN 80
Max Weight (Kg)	202

Curve N°	Code	Type	MOTOR			ATEX code
			Rated power P2 (kW)	Rated current I (A)	Starting current Is (A)	
1	7004857	G213R2H1-M32KA2	18,2	32,6	192,3	7006568
2	7004858	G213R2H2-M32KA2	18,2	32,6	192,3	7006521
3	7004887	G213R2H3-M32KA2	16,6	29,8	175,5	7007018
4	7004889	G213R2H4-M32KA2	14,9	26,8	158,1	7005276
5	7004891	G213R2H5-M32KA2	13,8	24,8	146,3	7006608




Dimensioni - Dimensions - Dimensions - Abmessungen - Dimensiones - Габариты (mm)



▽ LIVELLO MINIMO DI SOMMERSIBILITÀ
 MINIMUM SUBMERSIBLE LEVEL
 NIVEAU MINIMUM D'IMMERSION
 MINDESTWASSERSTAND
 NIVEL SUMERGIBLE MÍNIMO
 МИНИМАЛЬНАЯ ГЛУБИНА ПОГРУЖЕНИЯ



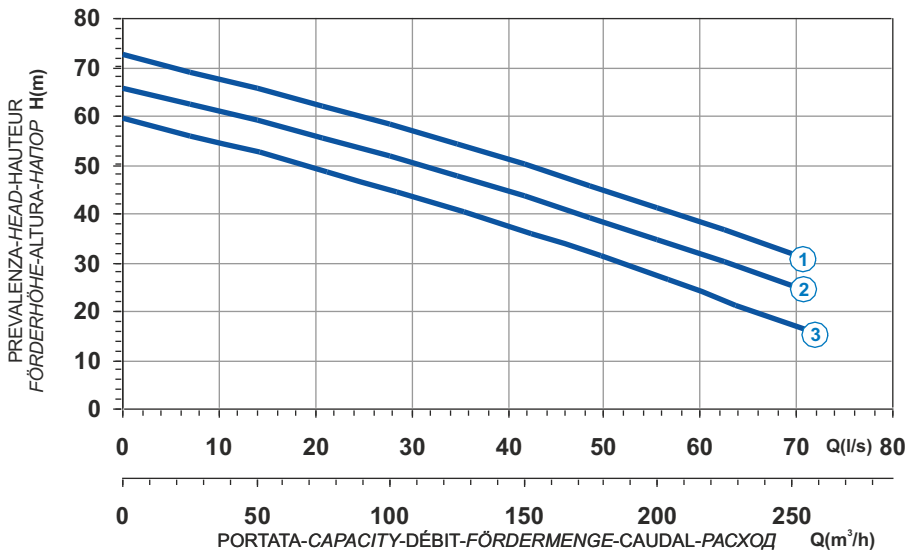
Versione disponibile con mantello di raffreddamento - Type available also with cooling jacket
 Version disponible avec chemise de refroidissement - Ausführung auch mit Kühlmantel lieferbar
 Disponible también con camisa de refrigeración - Вариант доступен с рубашкой охлаждения


 Ghisa EN-GJL-250
 Fonte EN-GJL-250
 Hierro fundido EN-GJL-250

 Cast Iron EN-GJL-250
 Grauguss EN-GJL-250
 Чугун EN-GJL-250



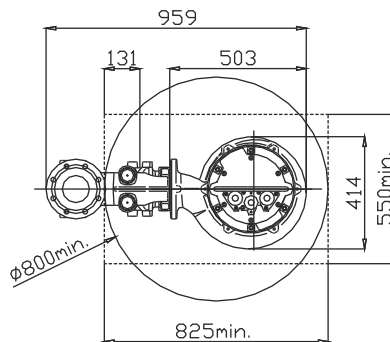
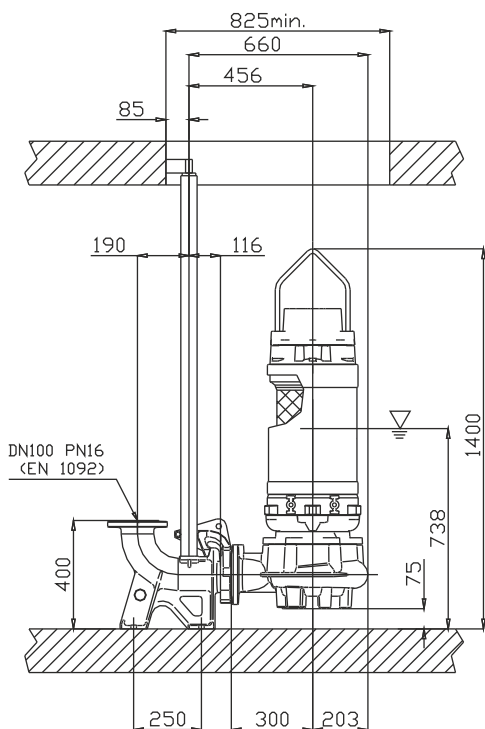
Curva caratteristica - Performance curve - Courbe caractéristique
Kennlinie - Curva característica - Характеристическая кривая



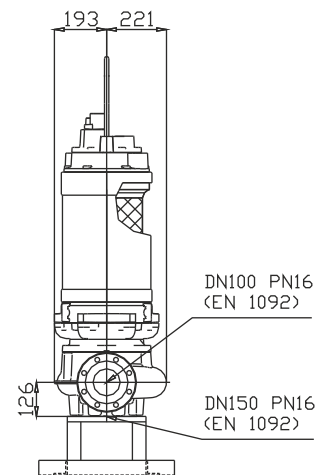
Curve N°	Code	Type	MOTOR			ATEX code 
			Rated power P2 (kW)	Rated current I (A)	Starting current Is (A)	
1	7001293	G216R2H1-P40KA2	40	70,6	416	7005232
2	7008360	G216R2H2-P40KA2	33,4	58,5	345	7005628
3	7009056	G216R2H3-P40KA2	27	46,9	277	7005627

Power supply	3ph 400/690V 50Hz
R.P.M.	2850
Free passage (mm)	40
Discharge (mm)	DN 100
Max Weight (Kg)	375

Dimensioni - Dimensions - Dimensions - Abmessungen - Dimensiones - Габариты (mm)



▽ LIVELLO MINIMO DI SOMMERGIBILITÀ
 MINIMUM SUBMERSIBLE LEVEL
 NIVEAU MINIMUM D'IMMERSION
 MINDESTWASSERSTAND
 NIVEL SUMERGIBLE MÍNIMO
 МИНИМАЛЬНАЯ ГЛУБИНА ПОГРУЖЕНИЯ



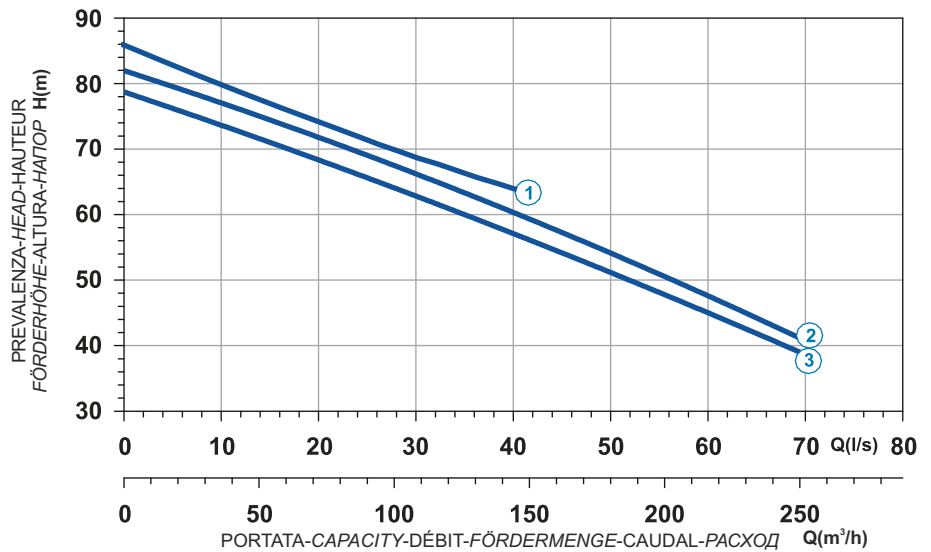
Versione disponibile con mantello di raffreddamento - Type available also with cooling jacket
 Version disponible avec chemise de refroidissement - Ausführung auch mit Kühlmantel lieferbar
 Disponible también con camisa de refrigeración - Вариант доступен с рубашкой охлаждения



Ghisa EN-GJL-250
 Fonte EN-GJL-250
 Hierro fundido EN-GJL-250

Cast Iron EN-GJL-250
 Grauguss EN-GJL-250
 Чугун EN-GJL-250

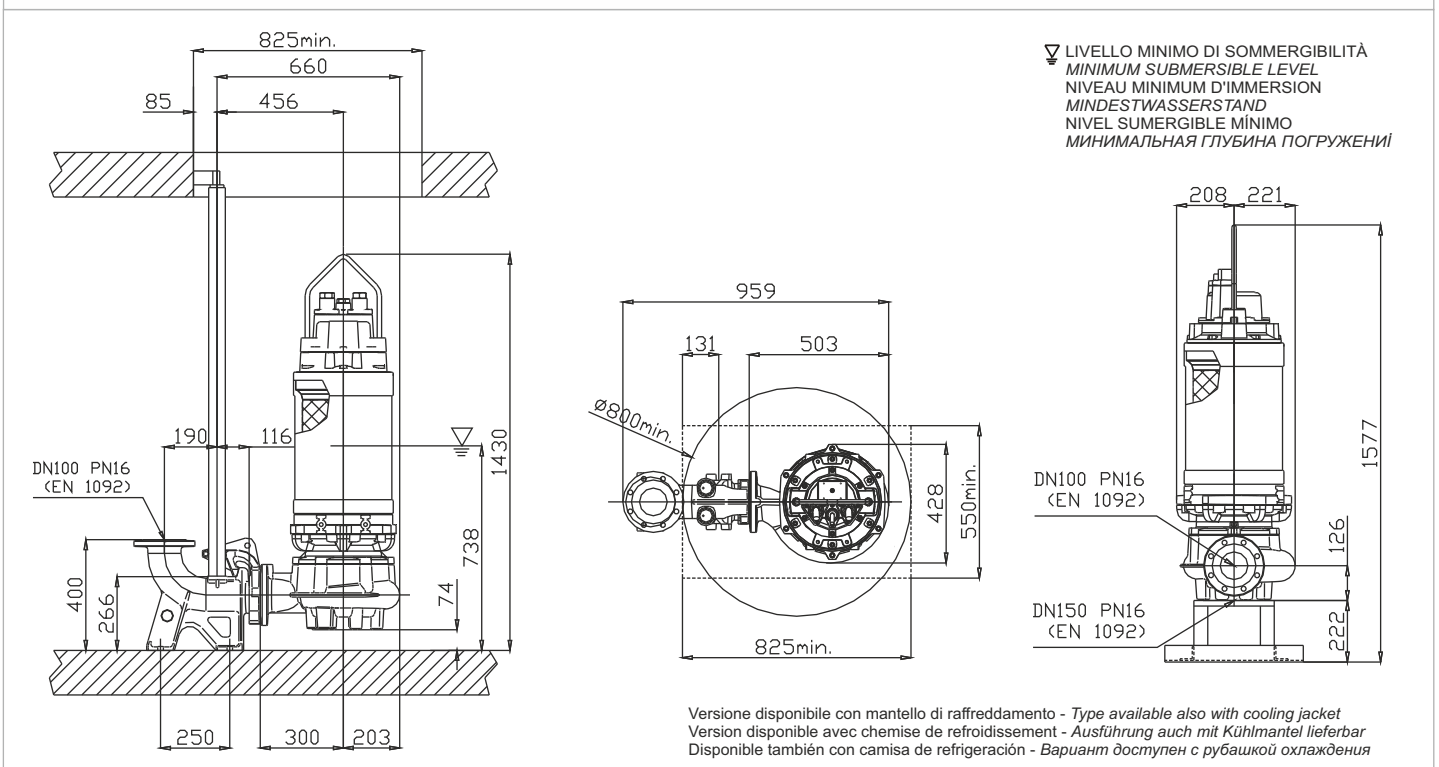
Curva caratteristica - Performance curve - Courbe caractéristique
 Kennlinie - Curva característica - Характеристическая кривая






Power supply	3ph 400/690V 50Hz
R.P.M.	2850
Free passage (mm)	40
Discharge (mm)	DN 100
Max Weight (Kg)	430

Curve N°	Code	Type	MOTOR			ATEX code
			Rated power P2 (kW)	Rated current I (A)	Starting current Is (A)	
1	7007351	G218R2H1-P40KA2	52	90,1	531,6	7001369
2	7007355	G218R2H2-P40KA2	52	90,1	532	7005635
3	7008619	G218R2H4-P40KA2	45	78,3	462	7009632

Dimensioni - Dimensions - Dimensions - Abmessungen - Dimensiones - Габариты (mm)

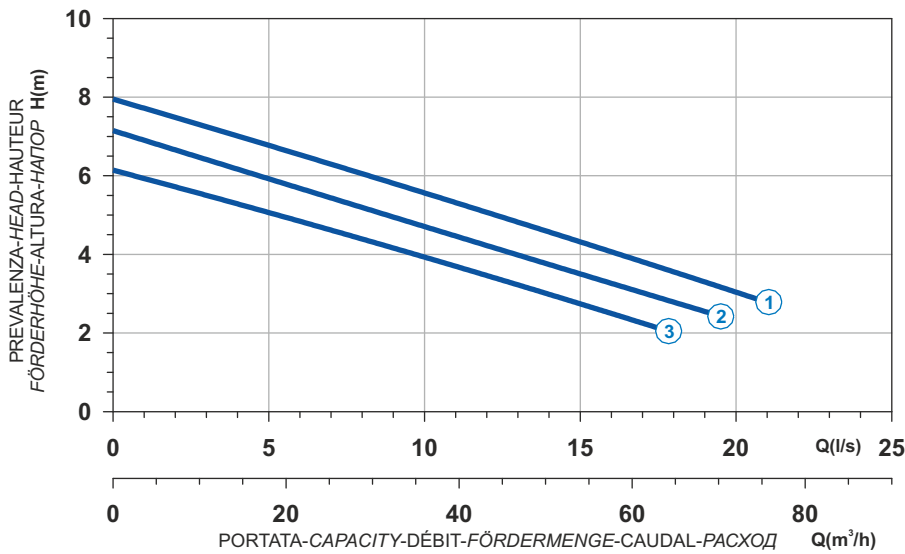



 Ghisa EN-GJL-250
 Fonte EN-GJL-250
 Hierro fundido EN-GJL-250

 Cast Iron EN-GJL-250
 Grauguss EN-GJL-250
 Чугун EN-GJL-250



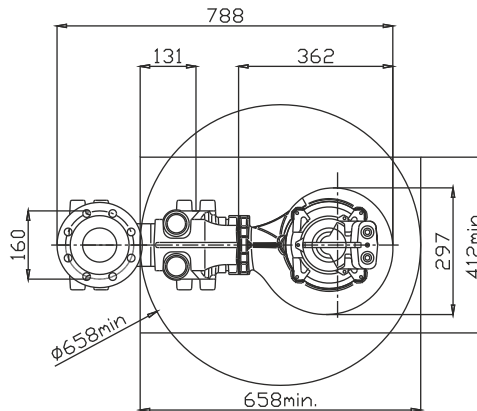
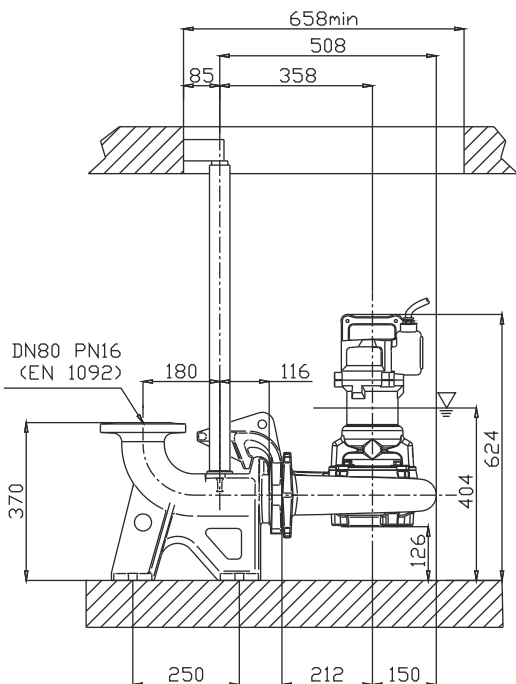
**Curva caratteristica - Performance curve - Courbe caractéristique
Kennlinie - Curva característica - Характеристическая кривая**



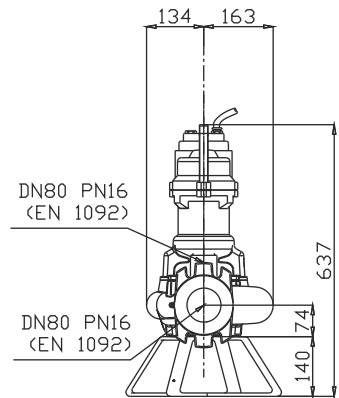
Curve N°	Code	Type	MOTOR			ATEX code 
			Rated power P2 (kW)	Rated current I (A)	Starting current Is (A)	
1	7004759	G471T2H1-M40AA0	1,6	3,1	13,9	7008507
2	7001513	G471T2H2-M40AA0	1,6	3,1	13,9	7003119
3	7001865	G471T2H3-M40AA0	1,4	2,7	12,1	7008406

Power supply	3ph 400V 50Hz
R.P.M.	1450
Free passage (mm)	40
Discharge (mm)	DN 80
Max Weight (Kg)	49

Dimensioni - Dimensions - Dimensions - Abmessungen - Dimensiones - Габариты (mm)



▽ LIVELLO MINIMO DI SOMMERGIBILITÀ
 MINIMUM SUBMERSIBLE LEVEL
 NIVEAU MINIMUM D'IMMERSION
 MINDESTWASSERSTAND
 NIVEL SUMERGIBLE MÍNIMO
 МИНИМАЛЬНАЯ ГЛУБИНА ПОГРУЖЕНИЯ

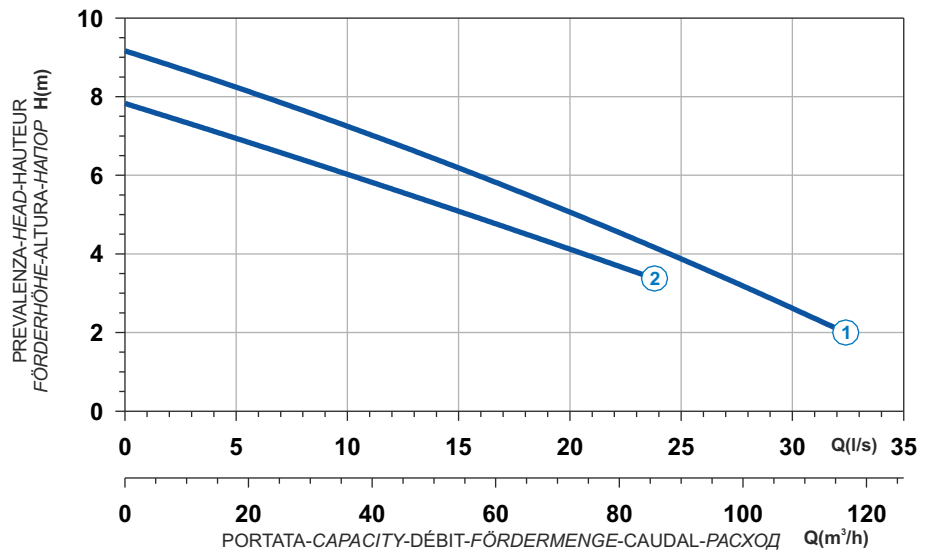




Ghisa EN-GJL-250
 Fonte EN-GJL-250
 Hierro fundido EN-GJL-250

Cast Iron EN-GJL-250
 Grauguss EN-GJL-250
 Чугун EN-GJL-250

Curva caratteristica - Performance curve - Courbe caractéristique
 Kennlinie - Curva característica - Характеристическая кривая

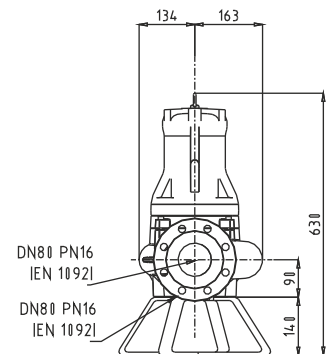
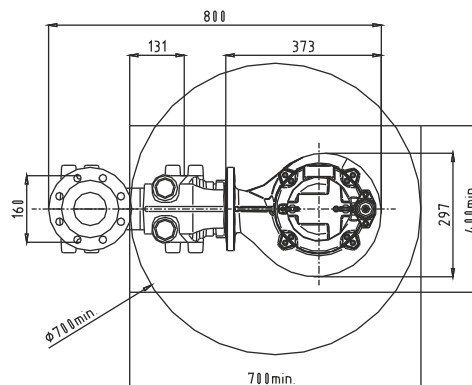
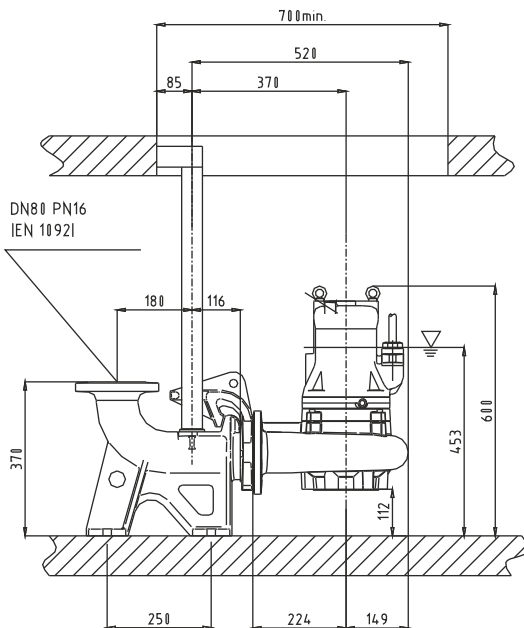





Power supply	3ph 400V 50Hz
R.P.M.	1450
Free passage (mm)	50
Discharge (mm)	DN 80
Max Weight (Kg)	82


Curve N°	Code	Type	MOTOR			ATEX code
			Rated power P2 (kW)	Rated current I (A)	Starting current Is (A)	
1	7006062	G409T2H2-M50AA0	2,8	5,4	24,3	7008642
2	7008629	G409T2H3-M50AA0	1,9	3,7	16,7	7000142

Dimensioni - Dimensions - Dimensions - Abmessungen - Dimensiones - Габариты (mm)

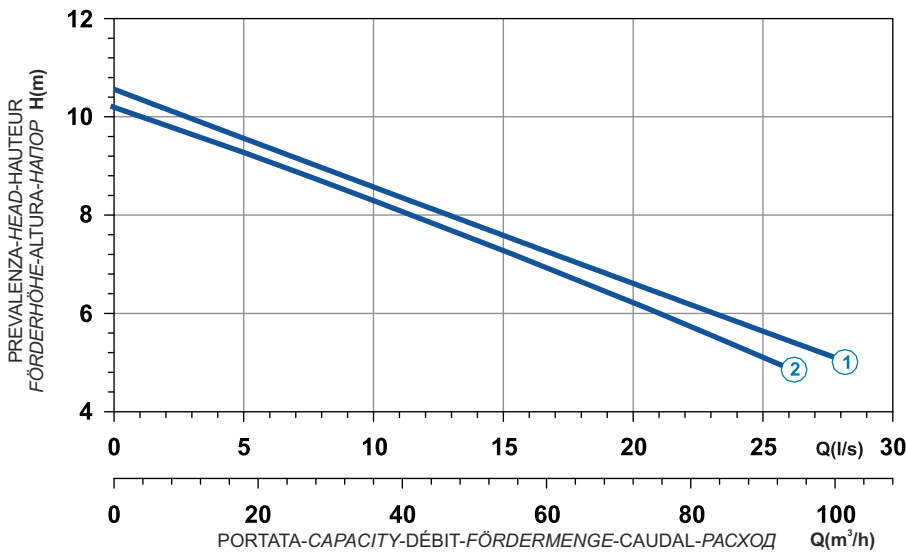
LIVELLO MINIMO DI SOMMERSIBILITÀ
 MINIMUM SUBMERSIBLE LEVEL
 NIVEAU MINIMUM D'IMMERSION
 MINDESTWASSERSTAND
 NIVEL SUMERGIBLE MÍNIMO
 МИНИМАЛЬНАЯ ГЛУБИНА ПОГРУЖЕНИЯ




 Ghisa EN-GJL-250
 Fonte EN-GJL-250
 Hierro fundido EN-GJL-250

 Cast Iron EN-GJL-250
 Grauguss EN-GJL-250
 Чугун EN-GJL-250

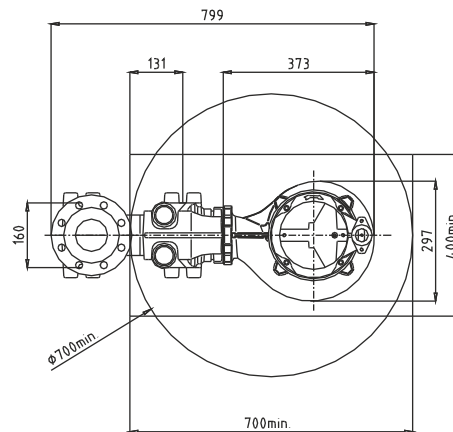
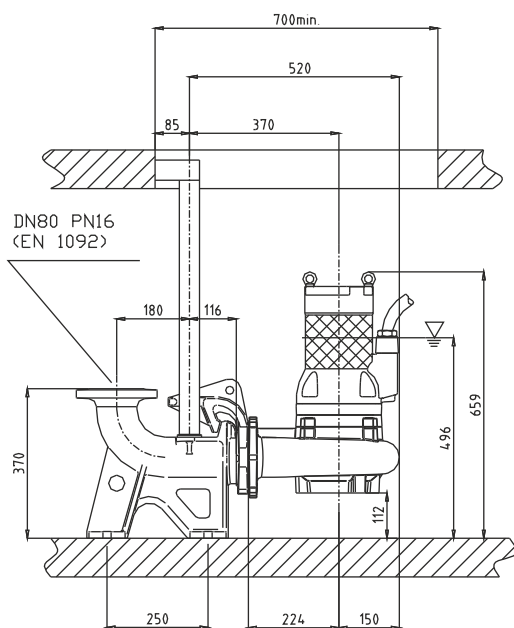
Curva caratteristica - Performance curve - Courbe caractéristique
Kennlinie - Curva característica - Характеристическая кривая



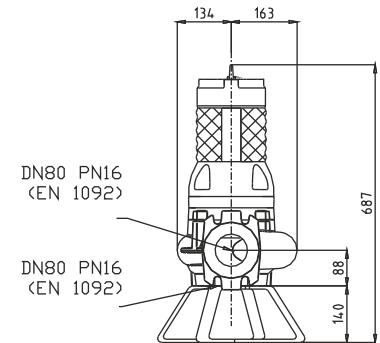
Curve N°	Code	Type	MOTOR			ATEX code 
			Rated power P2 (kW)	Rated current I (A)	Starting current Is (A)	
1	7008320	G410R2H2-M50AA2	3	5,8	26,1	7001860
2	7000156	G410R2H3-M50AA2	3	5,8	26,1	7006866

Power supply	3ph 400/690V 50Hz
R.P.M.	1450
Free passage (mm)	50
Discharge (mm)	DN 80
Max Weight (Kg)	86

Dimensioni - Dimensions - Dimensions - Abmessungen - Dimensiones - Габариты (mm)



▽ LIVELLO MINIMO DI SOMMERSIBILITÀ
 MINIMUM SUBMERSIBLE LEVEL
 NIVEAU MINIMUM D'IMMERSION
 MINDESTWASSERSTAND
 NIVEL SUMERGIBLE MÍNIMO
 МИНИМАЛЬНАЯ ГЛУБИНА ПОГРУЖЕНИЯ

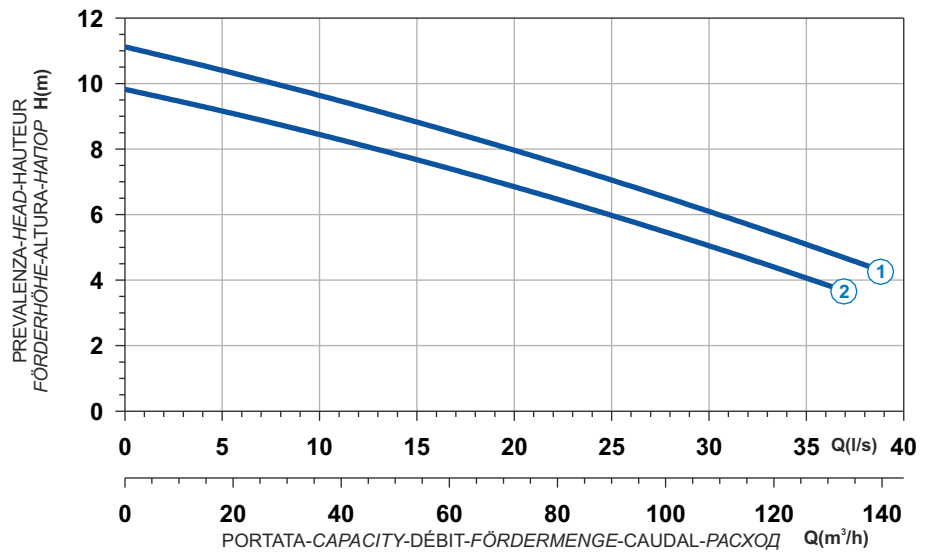




Ghisa EN-GJL-250
 Fonte EN-GJL-250
 Hierro fundido EN-GJL-250

Cast Iron EN-GJL-250
 Grauguss EN-GJL-250
 Чугун EN-GJL-250

Curva caratteristica - Performance curve - Courbe caractéristique
 Kennlinie - Curva característica - Характеристическая кривая

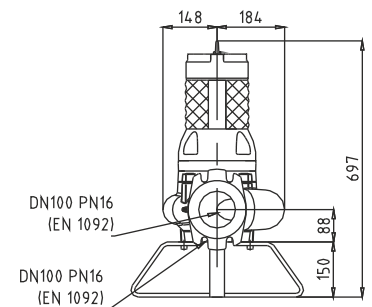
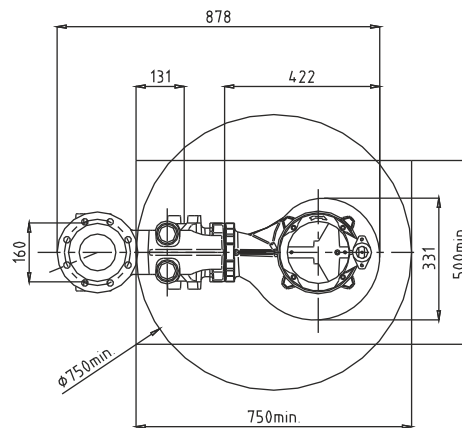
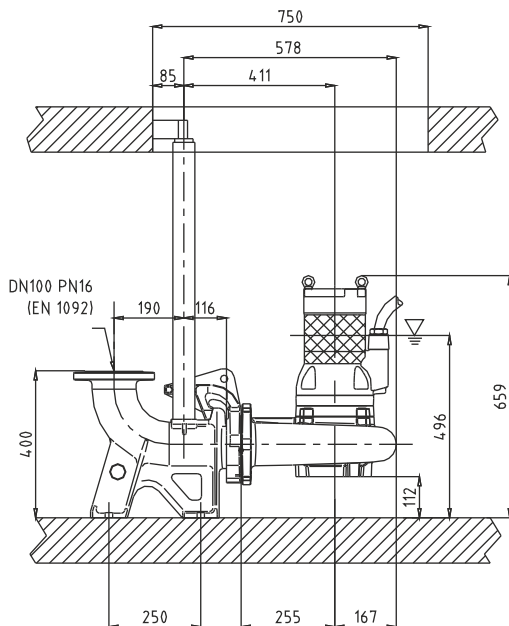





Power supply	3ph 400/690V 50Hz
R.P.M.	1450
Free passage (mm)	50
Discharge (mm)	DN 100
Max Weight (Kg)	91

Curve N°	Code	Type	MOTOR			ATEX code
			Rated power P2 (kW)	Rated current I (A)	Starting current Is (A)	
1	7000619	G410R2H3-P50AA2	3,9	7,9	39,5	7001207
2	7008258	G410R2H2-P50AA2	3	5,8	26,1	7009191

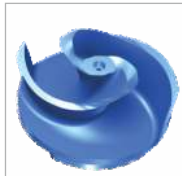
Dimensioni - Dimensions - Dimensions - Abmessungen - Dimensiones - Габариты (mm)

LIVELLO MINIMO DI SOMMERGIBILITÀ
 MINIMUM SUBMERSIBLE LEVEL
 NIVEAU MINIMUM D'IMMERSION
 MINDESTWASSERSTAND
 NIVEL SUMERGIBLE MÍNIMO
 МИНИМАЛЬНАЯ ГЛУБИНА ПОГРУЖЕНИИ

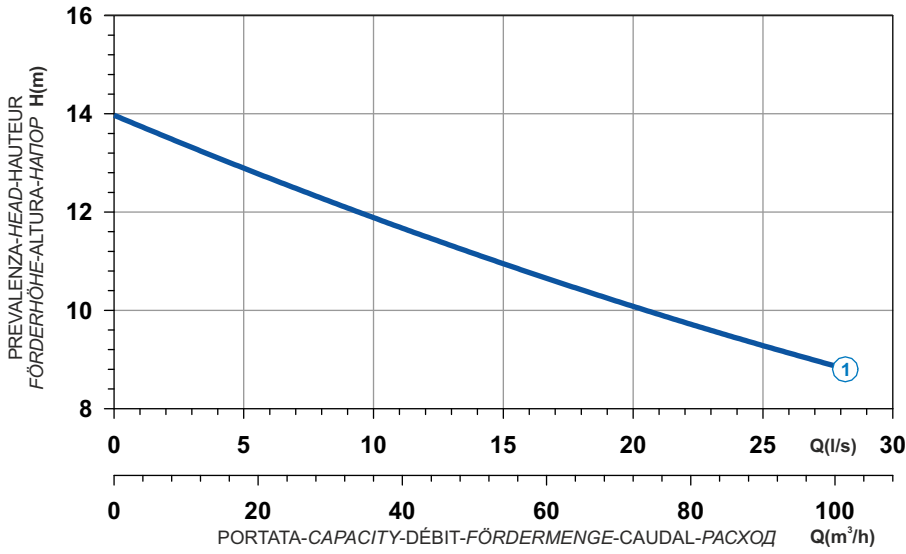



 Ghisa EN-GJL-250
 Fonte EN-GJL-250
 Hierro fundido EN-GJL-250

 Cast Iron EN-GJL-250
 Grauguss EN-GJL-250
 Чугун EN-GJL-250



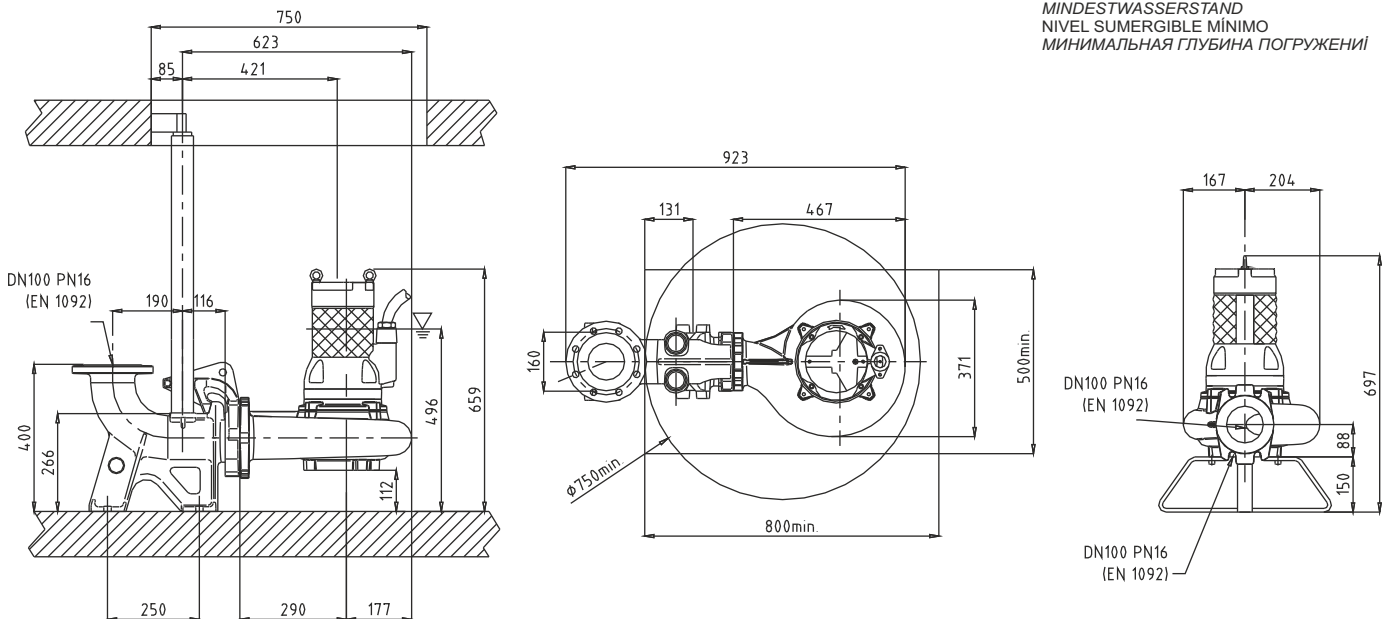
Curva caratteristica - Performance curve - Courbe caractéristique
Kennlinie - Curva característica - Характеристическая кривая



Curve N°	Code	Type	MOTOR			ATEX code 
			Rated power P2 (kW)	Rated current I (A)	Starting current Is (A)	
1	7008259	G410R2H1-P50AA2	4,6	9,3	46,5	7009192

Power supply	3ph 400/690V 50Hz
R.P.M.	1450
Free passage (mm)	50
Discharge (mm)	DN 100
Max Weight (Kg)	91

Dimensioni - Dimensions - Dimensions - Abmessungen - Dimensiones - Габариты (mm)

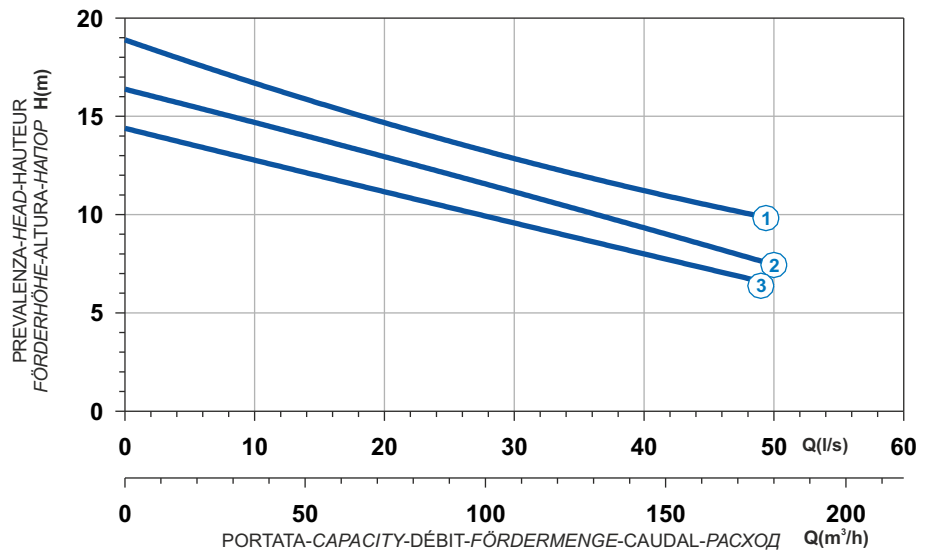




Ghisa EN-GJL-250
 Fonte EN-GJL-250
 Hierro fundido EN-GJL-250

Cast Iron EN-GJL-250
 Grauguss EN-GJL-250
 Чугун EN-GJL-250

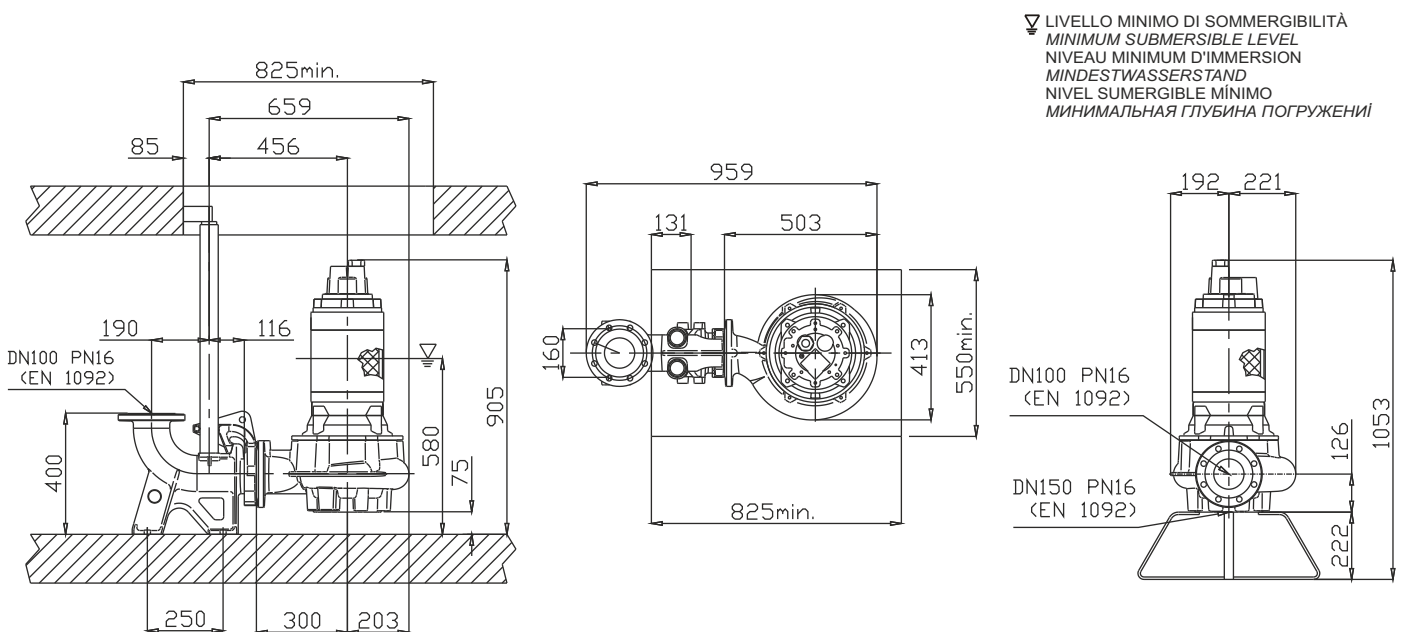
Curva caratteristica - Performance curve - Courbe caractéristique
 Kennlinie - Curva característica - Характеристическая кривая






Power supply	3ph 400/690V 50Hz
R.P.M.	1450
Free passage (mm)	60
Discharge (mm)	DN 100
Max Weight (Kg)	185

Curve N°	Code	Type	MOTOR			ATEX code
			Rated power P2 (kW)	Rated current I (A)	Starting current Is (A)	
1	7008105	G411R2H1-P60AA2	8,5	16,2	95,6	7008856
2	7007261	G411R2H2-P60AA2	7,1	13,5	79,6	7007262
3	7005122	G411R2H3-P60AA2	7,1	13,5	79,6	7008951

Dimensioni - Dimensions - Dimensions - Abmessungen - Dimensiones - Габариты (mm)



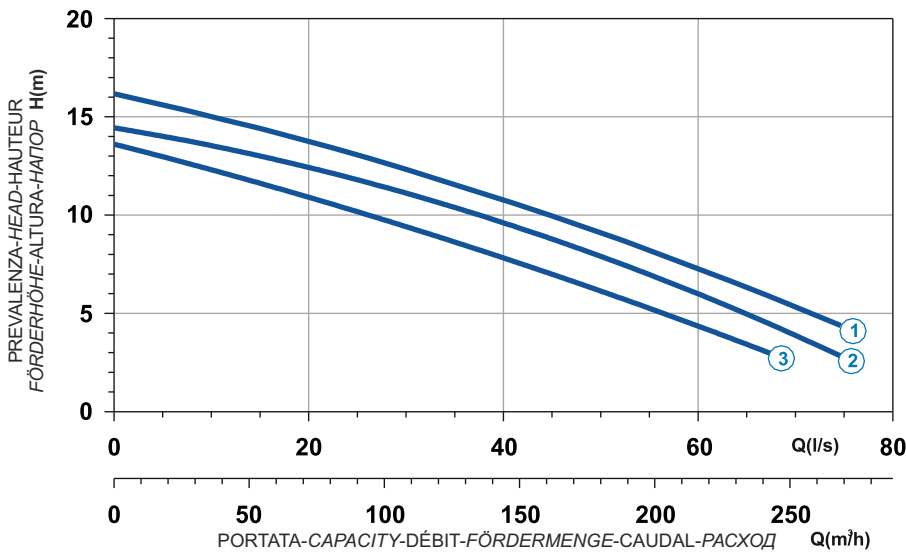
Versione disponibile con mantello di raffreddamento - Type available also with cooling jacket
 Version disponible avec chemise de refroidissement - Ausführung auch mit Kühlmantel lieferbar
 Disponible también con camisa de refrigeración - Вариант доступен с рубашкой охлаждения


 Ghisa EN-GJL-250
 Fonte EN-GJL-250
 Hierro fundido EN-GJL-250

 Cast Iron EN-GJL-250
 Grauguss EN-GJL-250
 Чугун EN-GJL-250



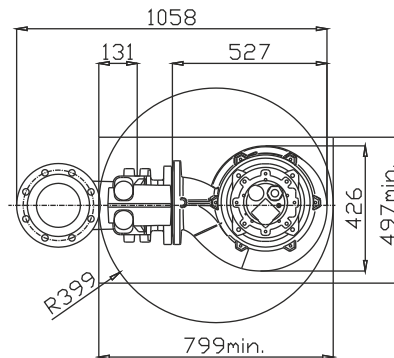
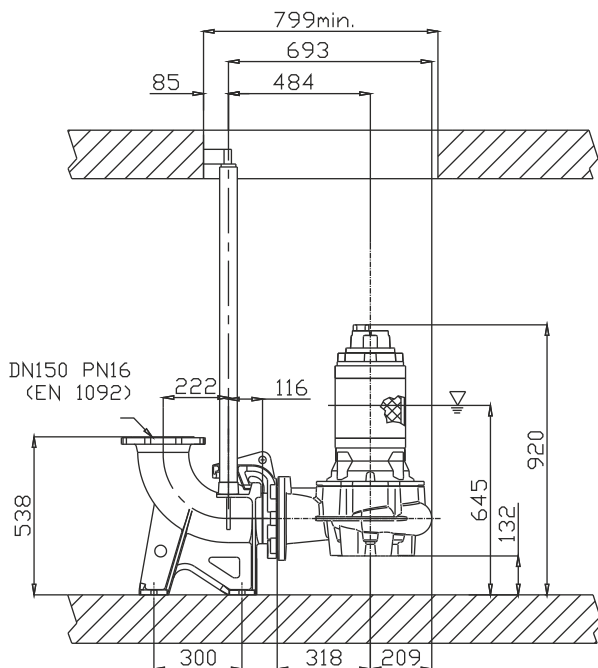
Curva caratteristica - Performance curve - Courbe caractéristique
Kennlinie - Curva característica - Характеристическая кривая



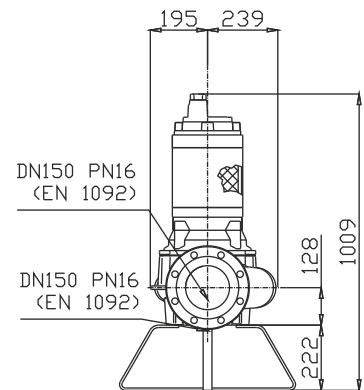
Curve N°	Code	Type	MOTOR			ATEX code 
			Rated power P2 (kW)	Rated current I (A)	Starting current Is (A)	
1	7008614	G411R2H4-S60AA2	8,5	16,2	95,6	7007373
2	7005270	G411R2H1-S60AA2	7,1	13,5	79,7	7006273
3	7009487	G411R2H3-S60AA2	7,1	13,5	79,7	7005230

Power supply	3ph 400/690V 50Hz
R.P.M.	1450
Free passage (mm)	60
Discharge (mm)	DN 150
Max Weight (Kg)	200

Dimensioni - Dimensions - Dimensions - Abmessungen - Dimensiones - Габариты (mm)



▽ LIVELLO MINIMO DI SOMMERGIBILITÀ
 MINIMUM SUBMERSIBLE LEVEL
 NIVEAU MINIMUM D'IMMERSION
 MINDESTWASSERSTAND
 NIVEL SUMERGIBLE MÍNIMO
 МИНИМАЛЬНАЯ ГЛУБИНА ПОГРУЖЕНИЯ



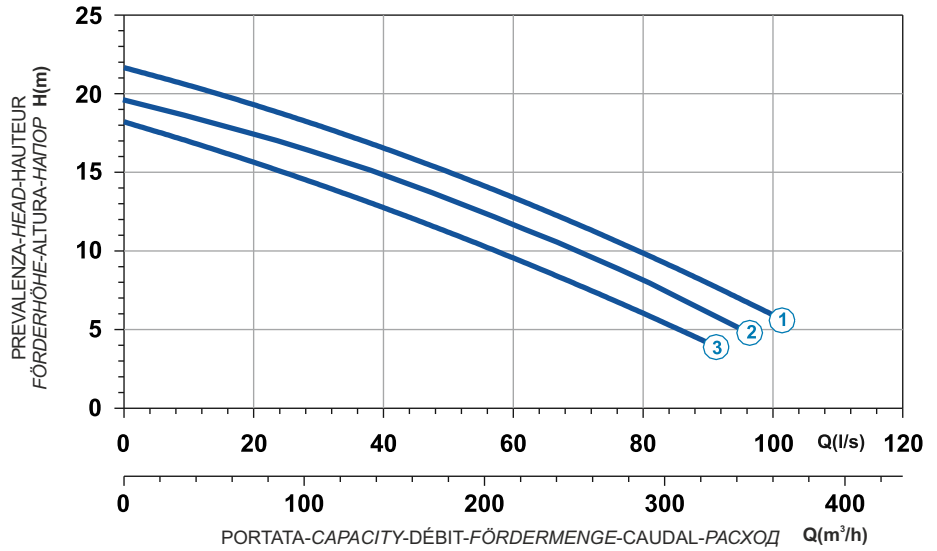
Versione disponibile con mantello di raffreddamento - Type available also with cooling jacket
 Version disponible avec chemise de refroidissement - Ausführung auch mit Kühlmantel lieferbar
 Disponible también con camisa de refrigeración - Вариант доступен с рубашкой охлаждения



Ghisa EN-GJL-250
 Fonte EN-GJL-250
 Hierro fundido EN-GJL-250

Cast Iron EN-GJL-250
 Grauguss EN-GJL-250
 Чугун EN-GJL-250

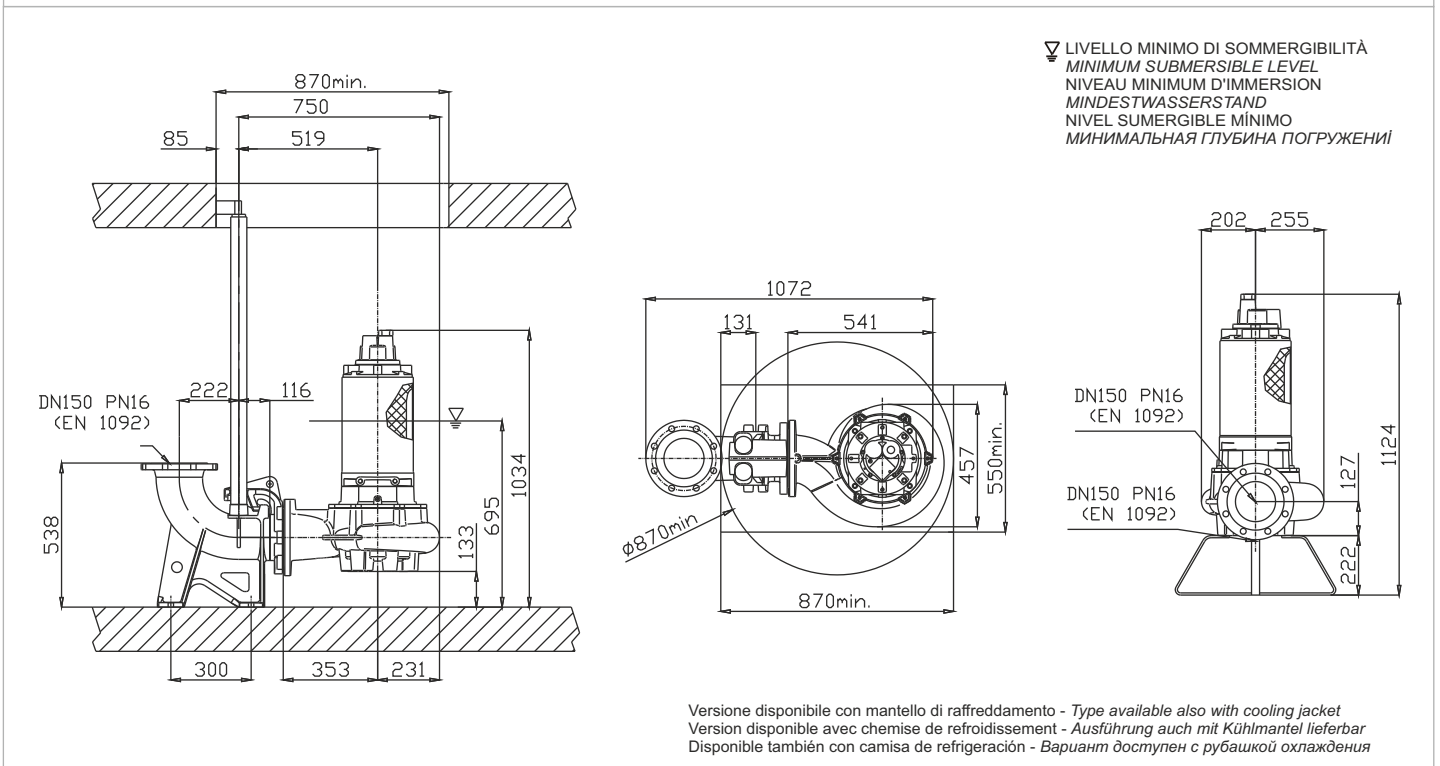
Curva caratteristica - Performance curve - Courbe caractéristique
 Kennlinie - Curva característica - Характеристическая кривая






Power supply	3ph 400/690V 50Hz
R.P.M.	1450
Free passage (mm)	60
Discharge (mm)	DN 150
Max Weight (Kg)	244

Curve N°	Code	Type	MOTOR			ATEX code
			Rated power P2 (kW)	Rated current I (A)	Starting current Is (A)	
1	7008440	G413R2H1-S60AA2	14,4	26,7	158	7006277
2	7000366	G413R2H6-S60AA2	11,6	21,6	127,4	7003560
3	7003588	G413R2H4-S60AA2	10	19	112	7007251

Dimensioni - Dimensions - Dimensions - Abmessungen - Dimensiones - Габариты (mm)

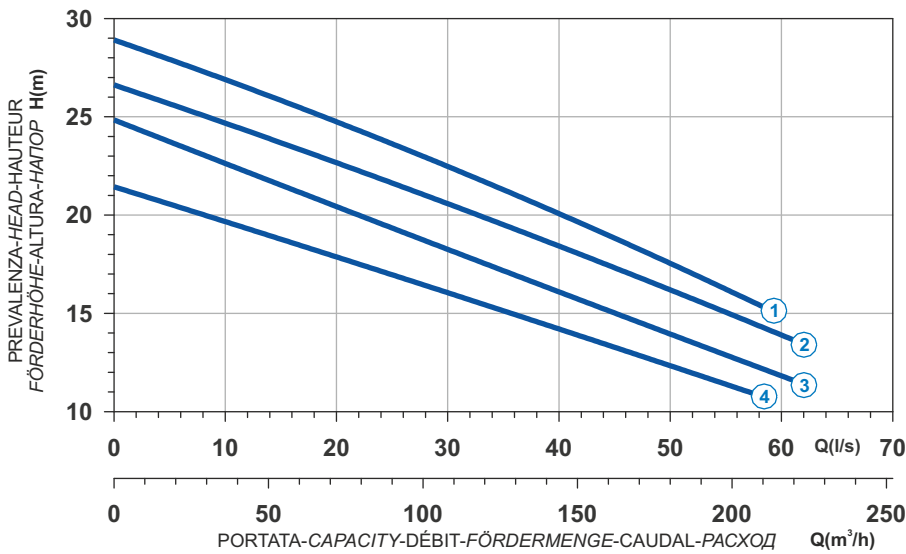



 Ghisa EN-GJL-250
 Fonte EN-GJL-250
 Hierro fundido EN-GJL-250

 Cast Iron EN-GJL-250
 Grauguss EN-GJL-250
 Чугун EN-GJL-250



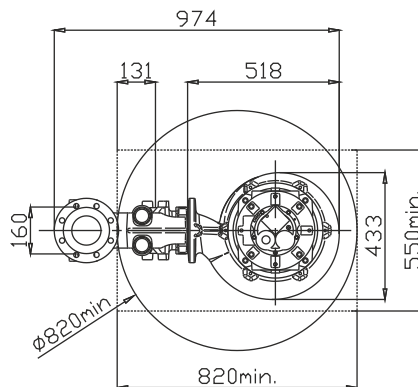
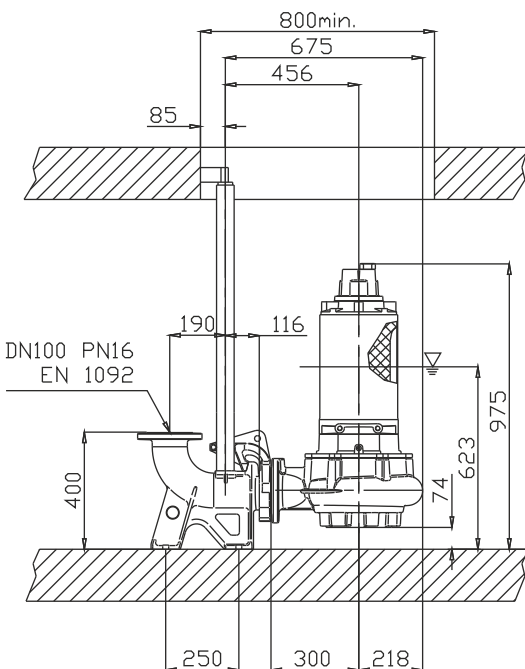
Curva caratteristica - Performance curve - Courbe caractéristique
Kennlinie - Curva característica - Характеристическая кривая



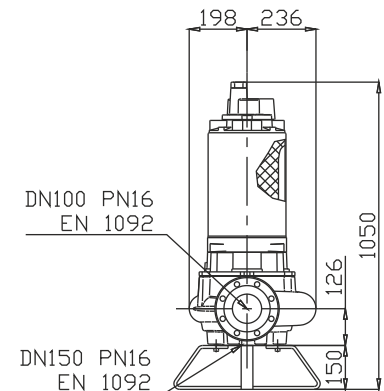
Curve N°	Code	Type	MOTOR			ATEX code 
			Rated power P2 (kW)	Rated current I (A)	Starting current Is (A)	
1	7009023	G413R2H1-P60AA2	17	31,5	186	7005903
2	7005809	G413R2H2-P60AA2	16	29,7	175	7005904
3	7001899	G413R2H3-P60AA2	14,4	26,7	157	7005905
4	7008041	G413R2H4-P60AA2	11,6	21,6	127	7007664

Power supply	3ph 400/690V 50Hz
R.P.M.	1450
Free passage (mm)	60
Discharge (mm)	DN 100
Max Weight (Kg)	235

Dimensioni - Dimensions - Dimensions - Abmessungen - Dimensiones - Габариты (mm)



▽ LIVELLO MINIMO DI SOMMERGIBILITÀ
 MINIMUM SUBMERSIBLE LEVEL
 NIVEAU MINIMUM D'IMMERSION
 MINDESTWASSERSTAND
 NIVEL SUMERGIBLE MÍNIMO
 МИНИМАЛЬНАЯ ГЛУБИНА ПОГРУЖЕНИЯ



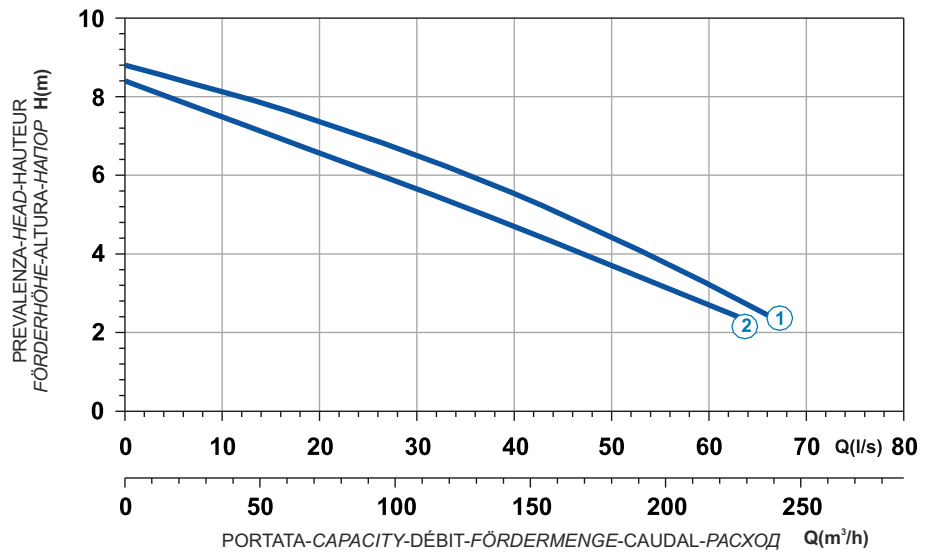
Versione disponibile con mantello di raffreddamento - Type available also with cooling jacket
 Version disponible avec chemise de refroidissement - Ausführung auch mit Kühlmantel lieferbar
 Disponible también con camisa de refrigeración - Вариант доступен с рубашкой охлаждения



Ghisa EN-GJL-250
 Fonte EN-GJL-250
 Hierro fundido EN-GJL-250

Cast Iron EN-GJL-250
 Grauguss EN-GJL-250
 Чугун EN-GJL-250

Curva caratteristica - Performance curve - Courbe caractéristique
 Kennlinie - Curva característica - Характеристическая кривая

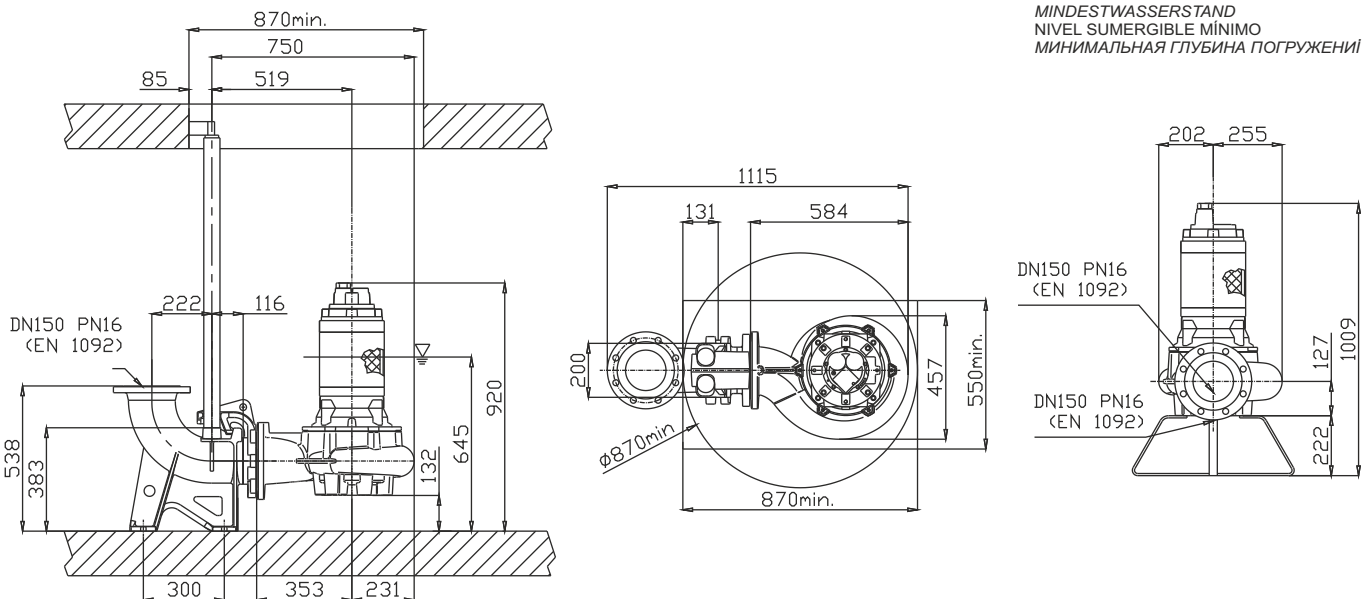


Power supply	3ph 400/690V-50Hz
R.P.M.	931
Free passage (mm)	60
Discharge (mm)	DN 150
Max Weight (Kg)	200




Curve N°	Code	Type	MOTOR			ATEX code
			Rated power P2 (kW)	Rated current I (A)	Starting current Is (A)	
1	7002919	G611R2H3-S60AA2	4	7,8	46	7007337
2	7009324	G611R2H4-S60AA2	4	7,8	46	7007370

Dimensioni - Dimensions - Dimensions - Abmessungen - Dimensiones - Габариты (mm)

▽ LIVELLO MINIMO DI SOMMERSIBILITÀ
 MINIMUM SUBMERSIBLE LEVEL
 NIVEAU MINIMUM D'IMMERSION
 MINDESTWASSERSTAND
 NIVEL SUMERGIBLE MÍNIMO
 МИНИМАЛЬНАЯ ГЛУБИНА ПОГРУЖЕНИЯ



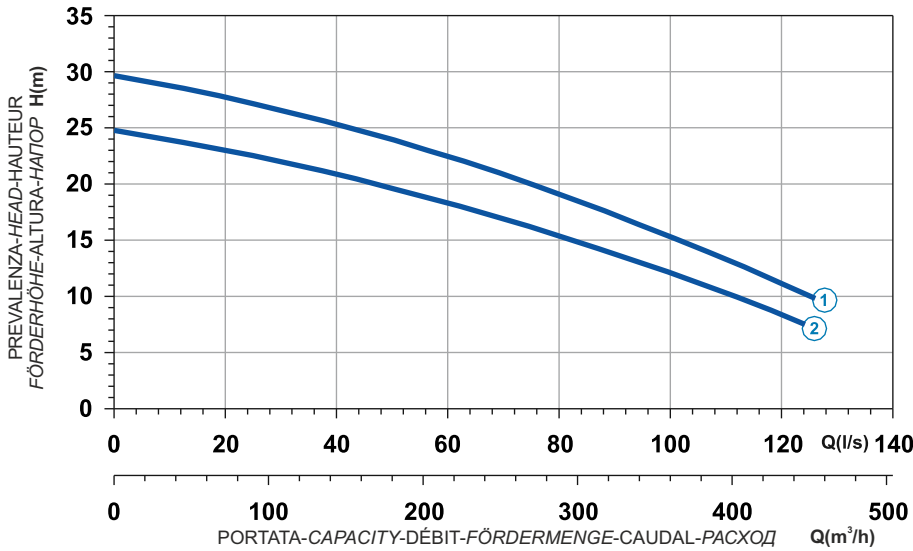
Versione disponibile con mantello di raffreddamento - Type available also with cooling jacket
 Version disponible avec chemise de refroidissement - Ausführung auch mit Kühlmantel lieferbar
 Disponible también con camisa de refrigeración - Вариант доступен с рубашкой охлаждения


 Ghisa EN-GJL-250
 Fonte EN-GJL-250
 Hierro fundido EN-GJL-250

 Cast Iron EN-GJL-250
 Grauguss EN-GJL-250
 Чугун EN-GJL-250



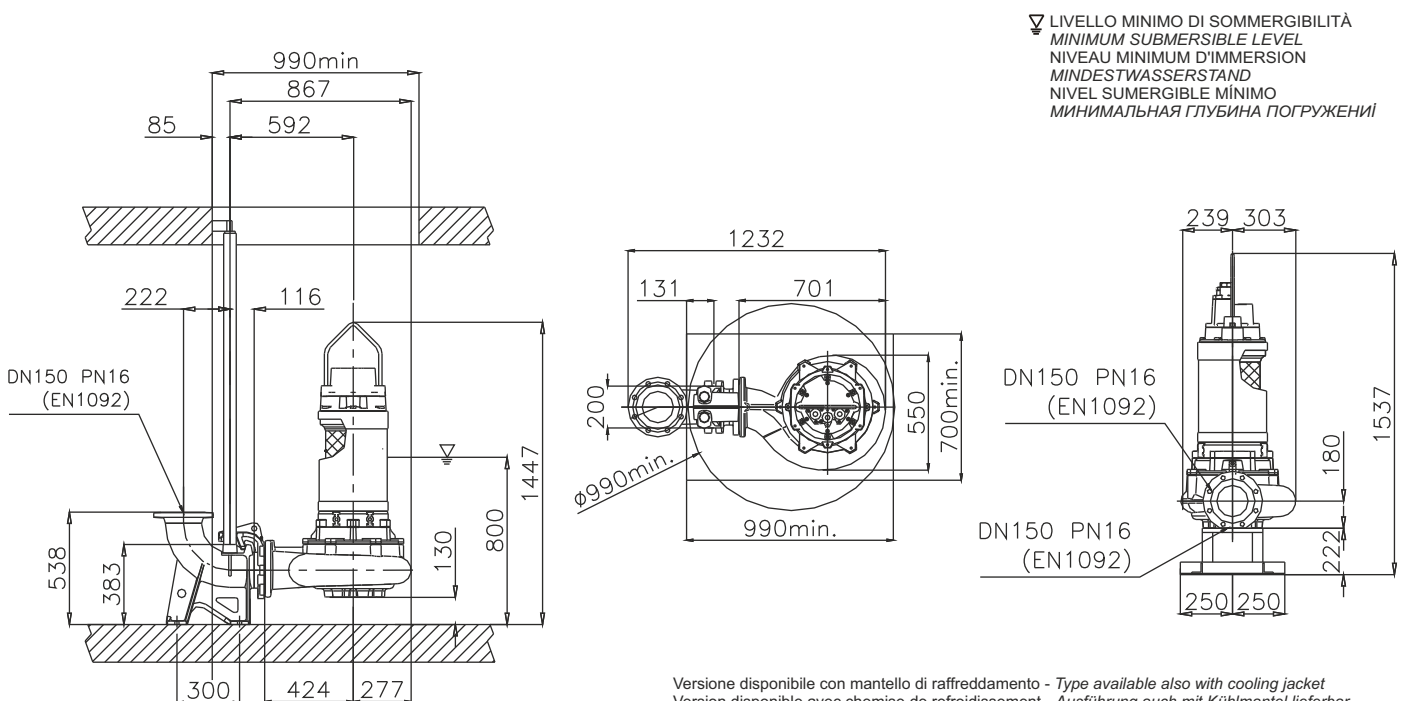
Curva caratteristica - Performance curve - Courbe caractéristique
Kennlinie - Curva característica - Характеристическая кривая



Curve N°	Code	Type	MOTOR			ATEX code 
			Rated power P2 (kW)	Rated current I (A)	Starting current Is (A)	
1	7003281	G416R2H2-S60AA2	27	49,6	292,6	7003460
2	7004570	G416R2H3-S60AA2	23	42,2	249	7004655




Power supply	3ph 400/690V-50Hz
R.P.M.	1441
Free passage (mm)	60
Discharge (mm)	DN150
Max Weight (Kg)	430

Dimensioni - Dimensions - Dimensions - Abmessungen - Dimensiones - Габариты (mm)



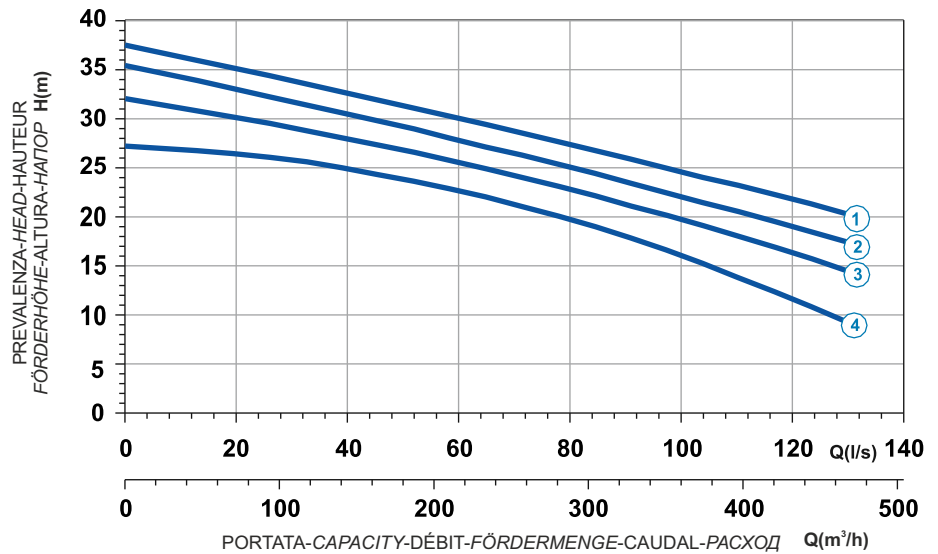
Versione disponibile con mantello di raffreddamento - Type available also with cooling jacket
Version disponible avec chemise de refroidissement - Ausführung auch mit Kühlmantel lieferbar
Disponible también con camisa de refrigeración - Вариант доступен с рубашкой охлаждения




 Ghisa EN-GJL-250
 Fonte EN-GJL-250
 Hierro fundido EN-GJL-250

 Cast Iron EN-GJL-250
 Grauguss EN-GJL-250
 Чугун EN-GJL-250

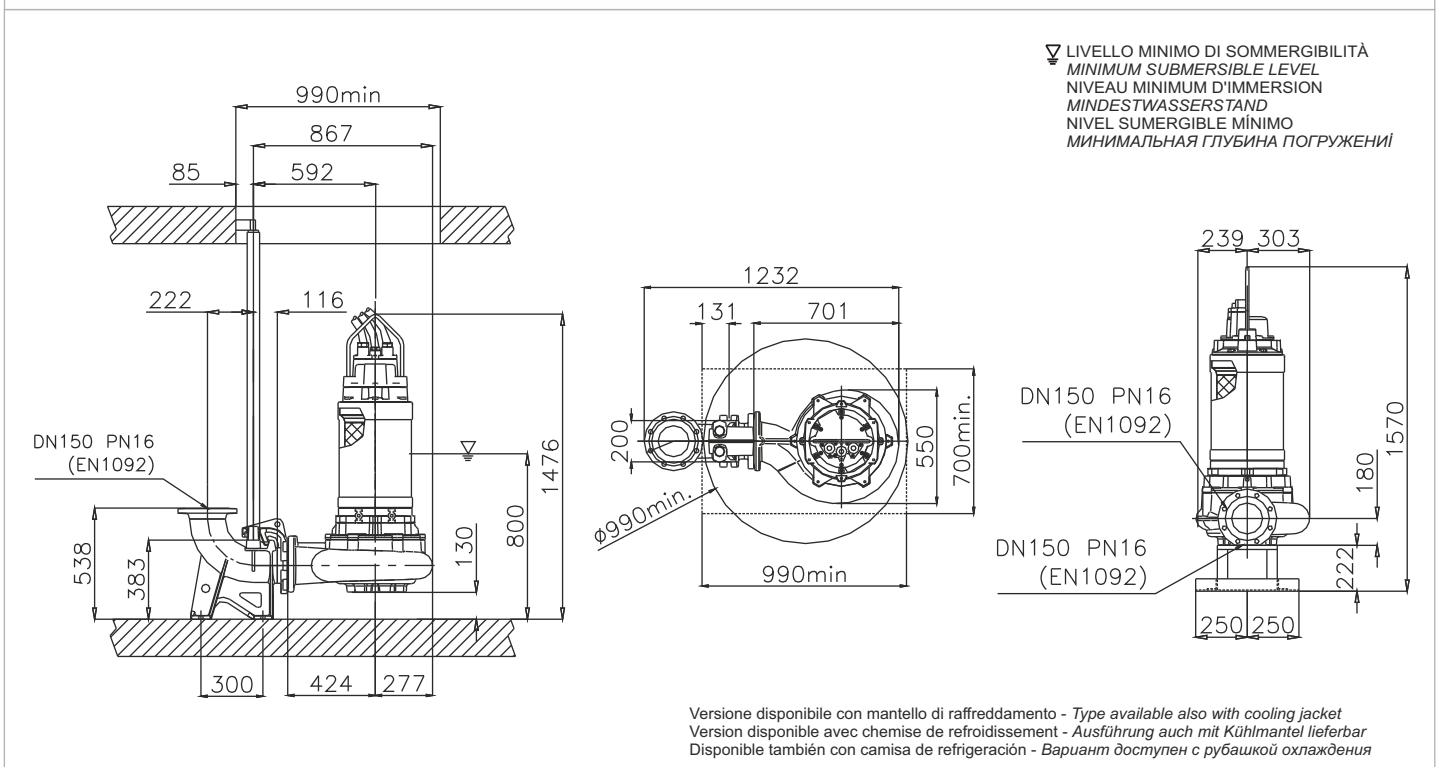
Curva caratteristica - Performance curve - Courbe caractéristique
Kennlinie - Curva característica - Характеристическая кривая



Power supply	3ph 400/690V-50Hz
R.P.M.	1450
Free passage (mm)	60
Discharge (mm)	DN150
Max Weight (Kg)	503

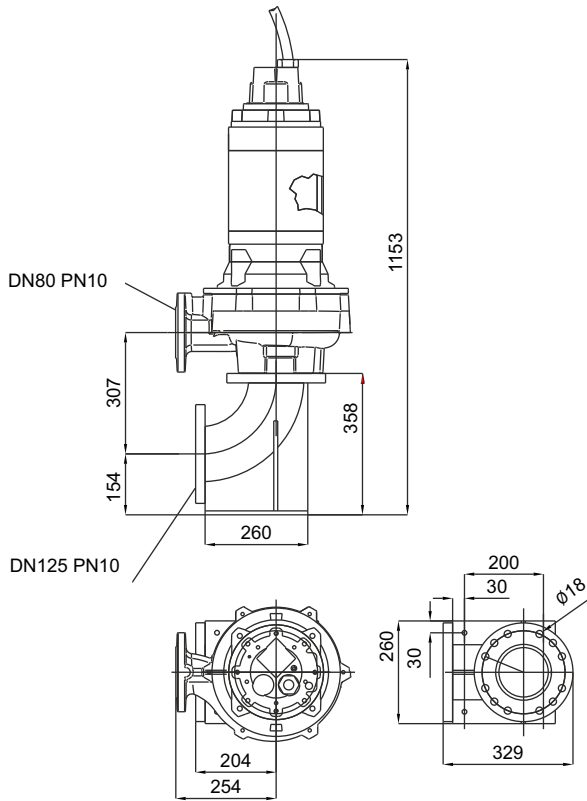
Curve N°	Code	Type	MOTOR			ATEX code 
			Rated power P2 (kW)	Rated current I (A)	Starting current Is (A)	
1	7002058	G418R2H1-S60AA2	41	73,1	431,3	7002429
2	7002871	G418R2H2-S60AA2	41	73,1	431,3	7002916
3	7003764	G418R2H3-S60AA2	35,7	63,6	375,2	7003913
4	7004127	G418R2H4-S60AA2	30	54,3	320,4	7004328

Dimensioni - Dimensions - Dimensions - Abmessungen - Dimensiones - Габариты (mm)

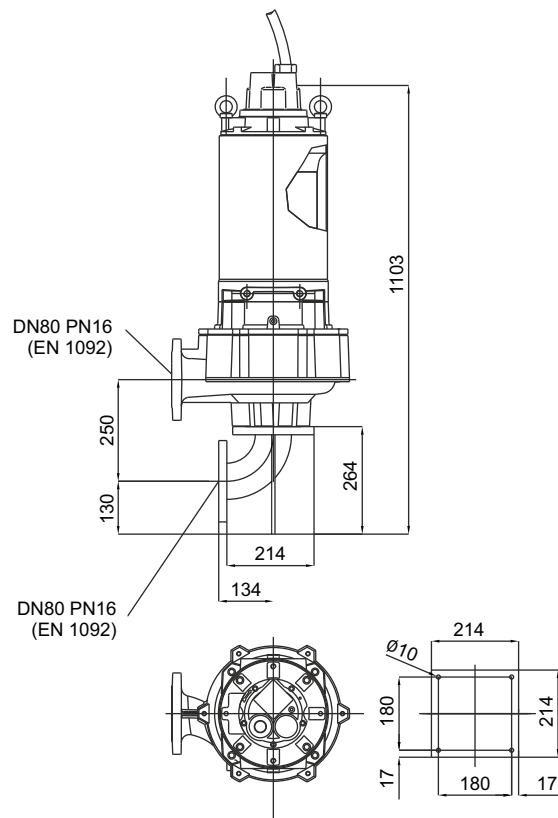


Installazione a secco
Dry pit installation
Installation fixe en chambre sèche
Trockenaufstellung
Instalación fija en cámara aislada
Сухая установка

G213R2H1-M32KA2



G211R2H1-M30AA2



G218R2H1-P40KA2

